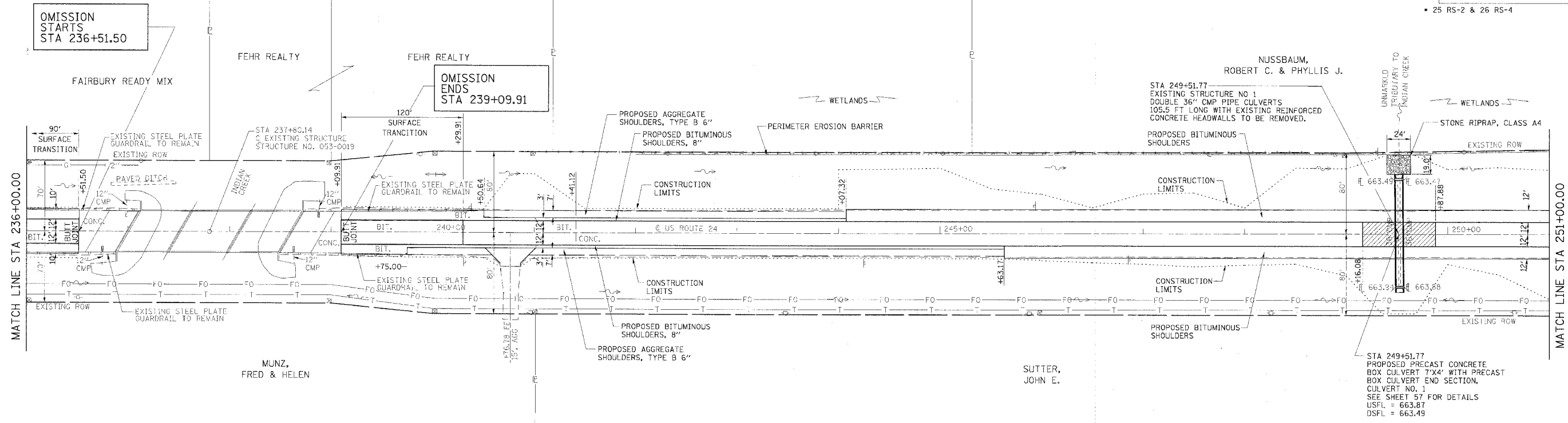
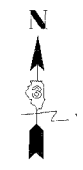


F.A.P. RTE.	SECTION	COUNTY	TOTAL SHEETS	SHEET NO.
317		LIVINGSTON	205	27
STA. 236+00.00		TO STA. 251+00.00		
CONTRACT NO. 66261				
• 25 RS-2 & 26 RS-4				



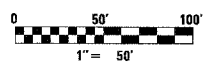
BM-237 CHISELED "□" TOP WITH WALL, STA 236+06.00, ELEV 677.91

BM-239 CHISELED "□" TOP WITH WALL, S-A 238+49.00, ELEV 677.38

BM-243 SPIKE IN POWER POLE STA 243+47.00, 76' RT, ELEV 668.61

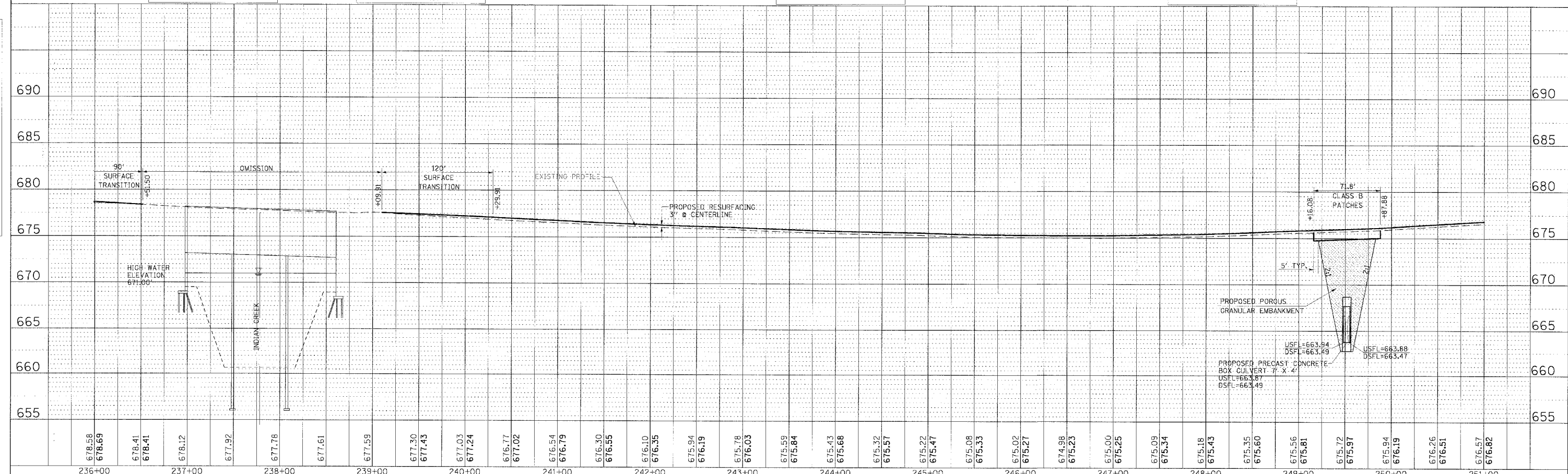
BM-248 SPIKE IN POWER POLE STA 248+22.00, 78' RT, ELEV 668.44

CLASS B PATCHES



DATE	BY

DATE	BY



PLAN AND PROFILE, STA 236+00.00 TO STA 251+00.00, FAP 317 (US ROUTE 24)