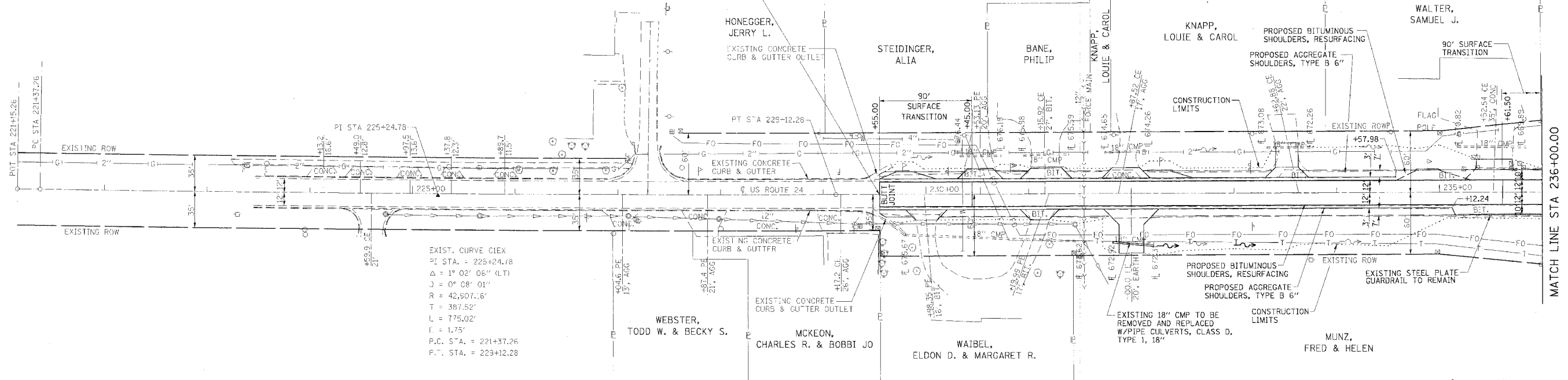


F.A.P. RTE.	SECTION	COUNTY	TOTAL SHEETS	SHEET NO.
317		LIVINGSTON	205	26
STA. 221+50.00		TO STA. 236+00.00		
CONTRACT NO. 66261				
• 25 RS-2 & 26 RS-4				

SECTION 25 RS-2 & 26 RS-4 BEGINS STA 229+55.00



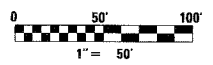
EXIST. CURVE DATA  
 P.I. STA. = 225+24.78  
 $\Delta = 1^{\circ} 02' 06''$  (LT)  
 $J = 0^{\circ} 08' 01''$   
 $R = 42,507.16'$   
 $T = 397.52'$   
 $L = 775.02'$   
 $C = 1.75'$   
 P.C. STA. = 221+37.26  
 P.T. STA. = 229+12.28

BM-226 SPIKE IN POWER POLE  
 STA 227+19.00, 20' RT  
 ELEV 682.73

BM-229 TOP R.O.W. MARKER  
 STA 229+12.00, 59' LT  
 ELEV 682.42

BM-231 TOP R.O.W. MARKER  
 STA 23+44.00, 60' RT  
 ELEV 677.83

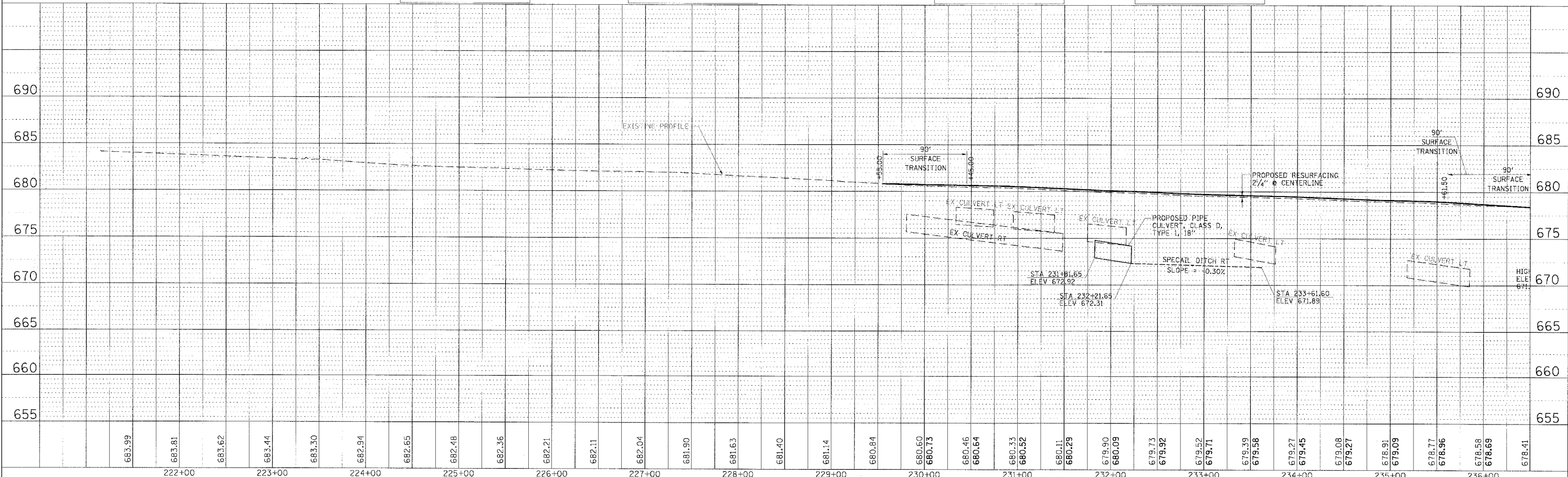
BM-232 SPIKE IN POWER POLE  
 STA 233+16.00, 59' LT  
 ELEV 677.82



MATCH LINE STA 236+00.00

PLAN	DATE
SURVEYED	
NOTED	
ALIGNED	
CHECKED	
BY	

PROFILE	DATE
SURVEYED	
NOTED	
CHECKED	
BY	



PLAN AND PROFILE, STA 221+50.00 TO STA 236+00.00, FAP 317 (US ROUTE 24)