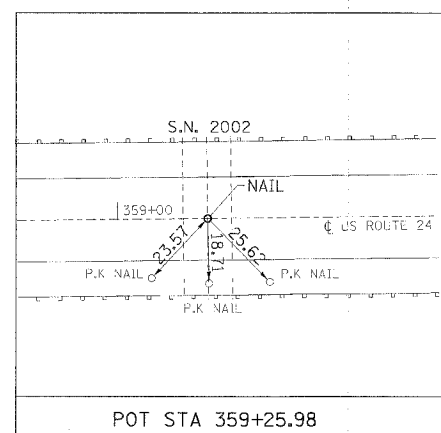
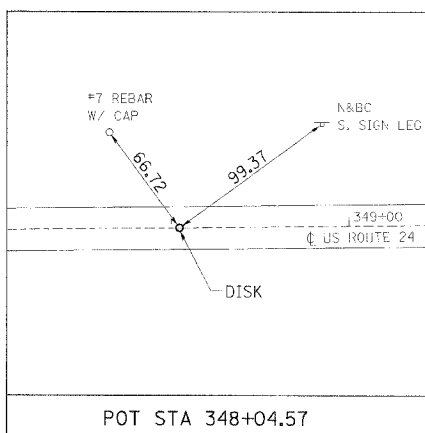
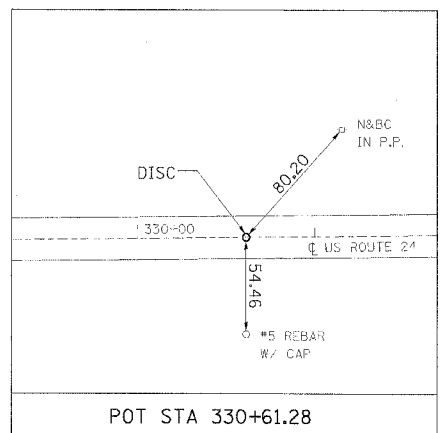
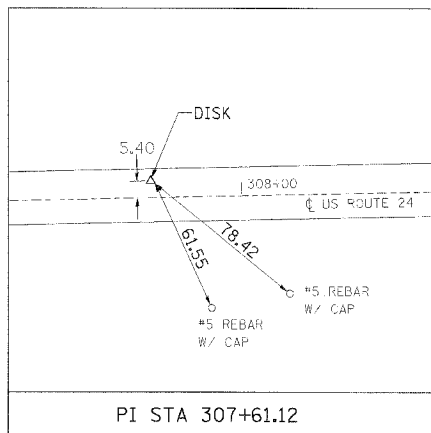
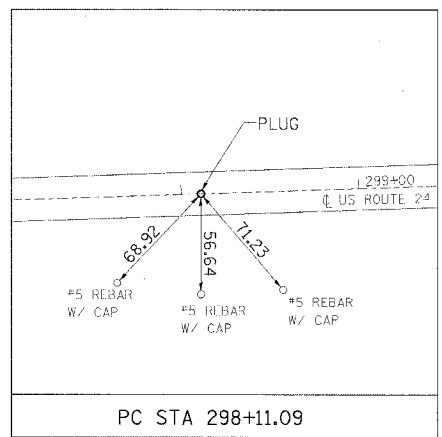
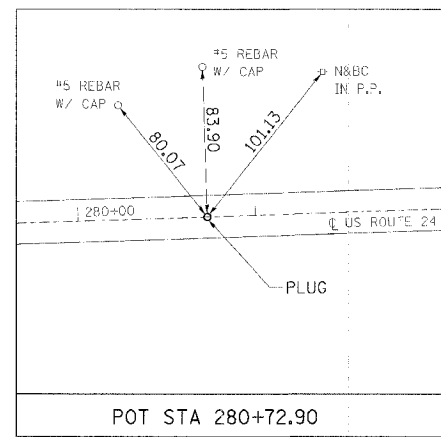
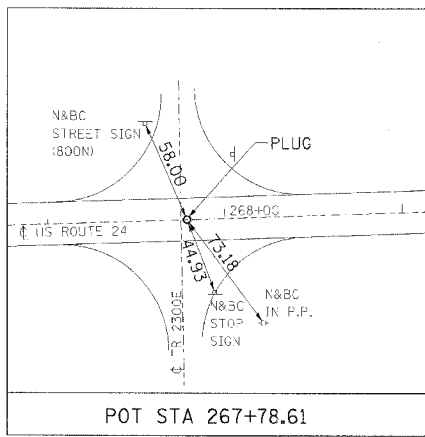
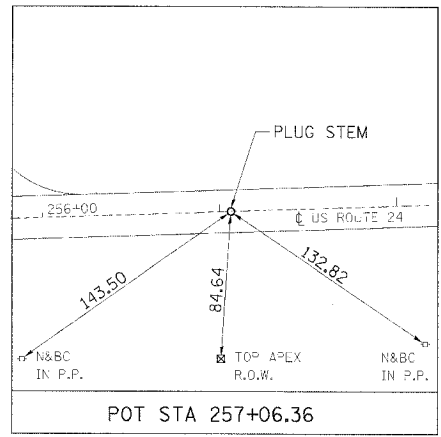
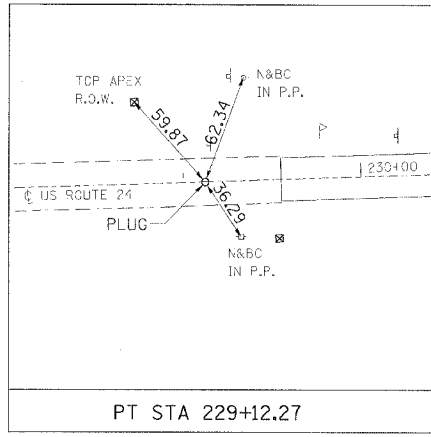


| | | | | |
|---------------------|---------|------------|--------------|-----------|
| F.A. RTE. | SECTION | COUNTY | TOTAL SHEETS | SHEET NO. |
| 317 | | LIVINGSTON | 205 | 25 |
| STA. | | TO STA. | | |
| CONTRACT NO. 66261 | | | | |
| • 25 RS-2 & 26 RS-4 | | | | |



| REVISIONS | |
|-----------|------|
| NAME | DATE |
| | |
| | |
| | |
| | |
| | |
| | |
| | |
| | |
| | |
| | |

ILLINOIS DEPARTMENT OF TRANSPORTATION
ALIGNMENT TIES
 FAP 317 (US ROUTE 24)
 SECTION 25 RS-2 & 26 RS-4
 LIVINGSTON COUNTY
 SCALE: _____ DRAWN BY BANDY
 DATE _____ CHECKED BY STEUART