

ROUTE	SECTION	COUNTY	TOTAL SHEETS	SHEET NUMBER
SN 016-2438	2004-114 BR	COOK	17	11

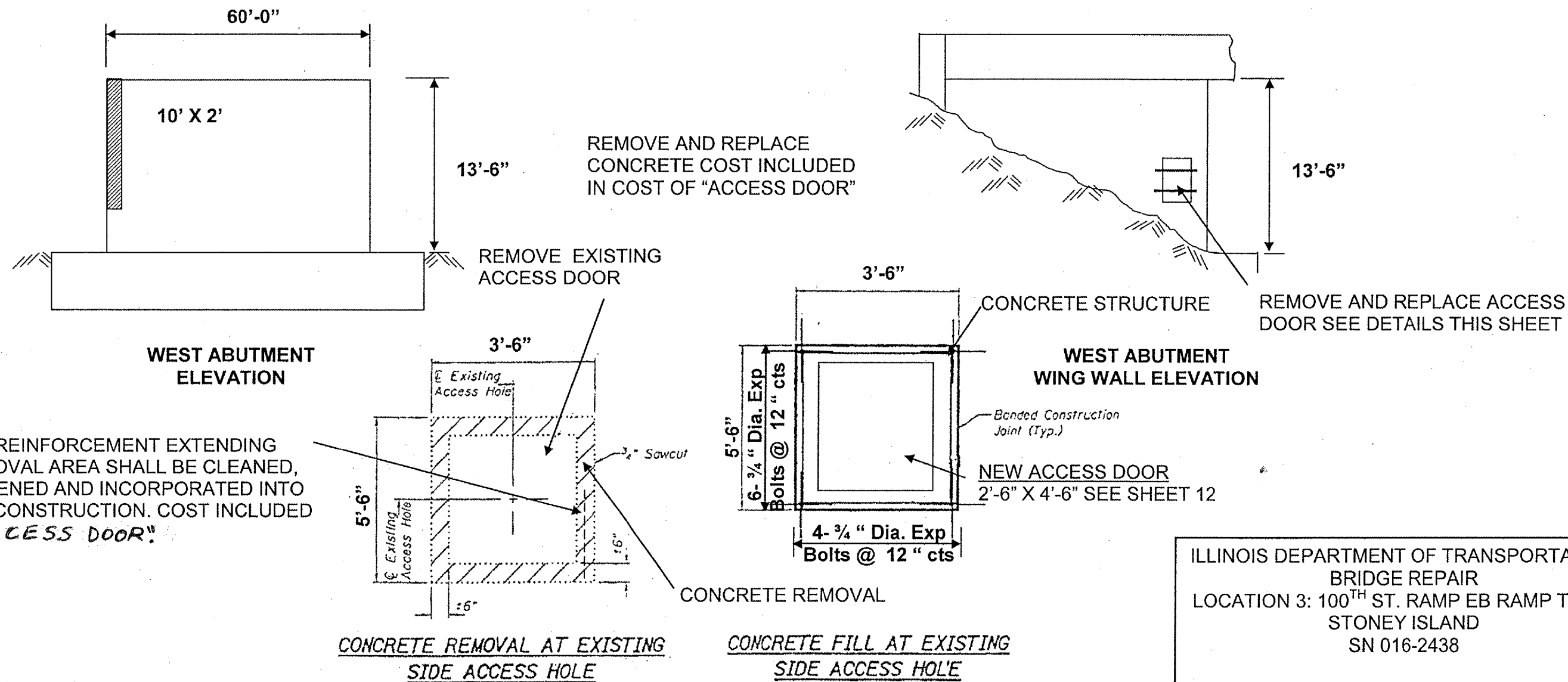
Total Bill of Material		
Item	Unit	Qty
Formed Concrete Repair $\leq 5"$	SQ FT	20.0
Access Door	EACH	1

SHEET 1 OF 2

CONTRACT 62870

General Note:

Plan dimensions and details relative to existing structure have been taken from existing plans and are subject to nominal construction variations. It shall be the Contractor's responsibility to verify such dimensions and details in the field and make necessary approved adjustments prior to construction or ordering of materials. Such variations shall not be cause for additional compensation for a change in the scope of the work, however, the Contractor will be paid for the quantity actually furnished at the unit price bid for the work. Expansion bolts shall be $\frac{3}{4}$ " diameter hooked bolts & shall extend 9" min. into concrete.



REMOVE AND REPLACE CONCRETE COST INCLUDED IN COST OF "ACCESS DOOR"

REMOVE EXISTING ACCESS DOOR

REMOVE AND REPLACE ACCESS DOOR SEE DETAILS THIS SHEET

EXISTING REINFORCEMENT EXTENDING INTO REMOVAL AREA SHALL BE CLEANED, STRAIGHTENED AND INCORPORATED INTO THE NEW CONSTRUCTION. COST INCLUDED WITH "ACCESS DOOR"

Formed Concrete Repair $\leq 5"$ = 20 SQ FT

ILLINOIS DEPARTMENT OF TRANSPORTATION
BRIDGE REPAIR
LOCATION 3: 100TH ST. RAMP EB RAMP TO NB
STONEY ISLAND
SN 016-2438