

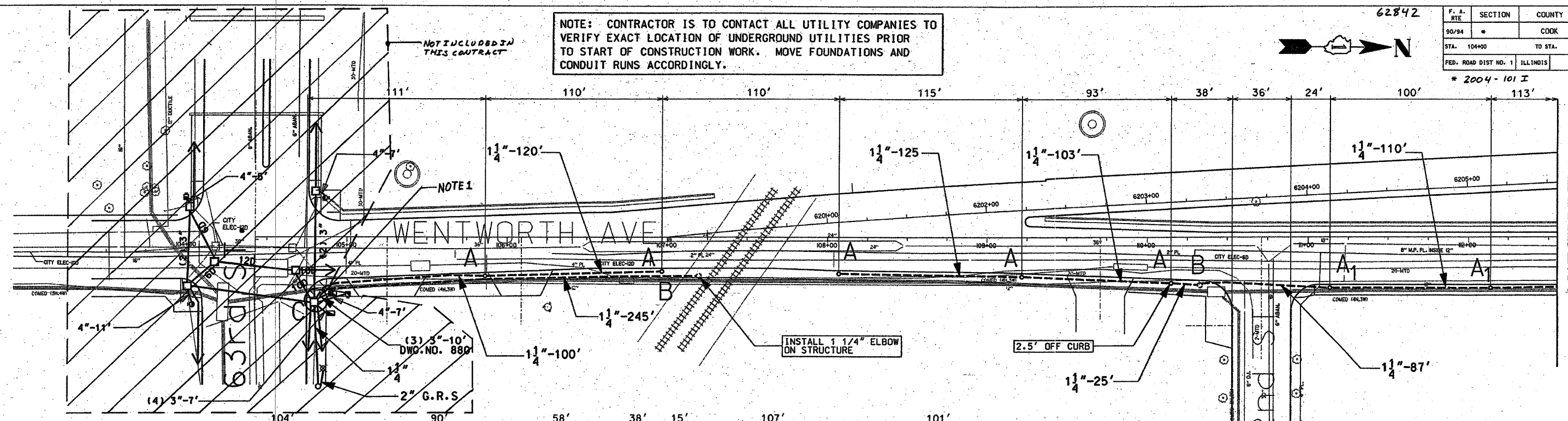
62842

F. A. RTE	SECTION	COUNTY	TOTAL SHEETS	SHEET NO
90/94	*	COOK	31	19
STA. 104+00	TO STA. 118+95			
FED. ROAD DIST NO. 1	ILLINOIS	FED AID PROJECTS		

* 2004-101 I



NOTE: CONTRACTOR IS TO CONTACT ALL UTILITY COMPANIES TO VERIFY EXACT LOCATION OF UNDERGROUND UTILITIES PRIOR TO START OF CONSTRUCTION WORK. MOVE FOUNDATIONS AND CONDUIT RUNS ACCORDINGLY.



MATCH LINE STATION 112+55

MATCH LINE STATION 112+55

MATCH LINE STATION 118+95 SEE SHEET 04-009

- NOTES:**
1. ROUTE PROPOSED CONDUIT RUN TO THE EXISTING MANHOLE OR HAND HOLE AS SHOWN. DRILL THE EXISTING MANHOLE OR HANDHOLE AND INSTALL PROPOSED CONDUIT THROUGH MANHOLE OR HANDHOLE WALL. SEE DRAWING 150E-2 FOR DETAILS.
 2. PROVIDE A ONE FOOT CONDUIT STUB AT HANDHOLE IN THE DIRECTION AS SHOWN ON THIS DRAWING. PROVIDE A CONDUIT CAP FOR THE CONDUIT STUB. THE CONDUIT CAP WILL BE INCLUDED IN THE UNIT PRICE FOR THE CONDUIT OF SPECIFIED TYPE AND DIAMETER. NO SEPARATE PAYMENT WILL BE MADE.

- NOTES: CONTRACTOR IS TO INSTALL UNDERGROUND CONDUIT AND PULL ROPE BETWEEN FOUNDATIONS AS WELL AS PERFORM THE FOLLOWING WORK ITEMS ACCORDING TO BUREAU OF ELECTRICITY SPECIFICATIONS:**
- "A"- INSTALL 20" x 5' FOUNDATION, 10" B.C., 1" ANCHOR RODS AS PER DRAWING No. 565. FLUSH IN CONCRETE SIDEWALK, 2' OFF FACE OF CURB, UNLESS NOTED OTHERWISE.
 - "A₁"- INSTALL 20" x 5' OFFSET FOUNDATION, 10" B.C., 1" ANCHOR RODS SIMILAR AS PER DRAWING No. 937. 2' OFF FACE OF CURB, UNLESS NOTED OTHERWISE. BUILD FOUNDATION FLUSH WITH SIDEWALK.
 - "B"- INSTALL 30" HANDHOLE AS PER DRAWING NO. 867 WITH 24" FRAME AND COVER.
 - "C"- DRILL EXISTING MANHOLE, HANDHOLE OR FOUNDATION.

- 1 1/4" DIRECT BORED CONDUIT SCHEDULE #80 AS PER IDOT ARTICLE 810.03
- 2" DIRECT BORED CONDUIT SCHEDULE #80 AS PER IDOT ARTICLE 810.03
- 2" CONDUIT SCHEDULE #40 INSTALLED IN TRENCH AS PER IDOT ARTICLE 810.03
- 1 1/4" GALVANIZED RIGID STEEL ELBOW ON STRUCTURE
- ~~2" GALVANIZED RIGID STEEL CONDUIT INSTALLED IN TRENCH AS PER IDOT ARTICLE 810.03~~
- 3" CONDUIT SCHEDULE #40 INSTALLED IN TRENCH AS PER IDOT ARTICLE 810.03
- HAND HOLE - 30" x 36" WITH 24" FRAME AND COVER
- CONCRETE FOUNDATION - 5' x 20", 10" B.C., 1" ANCHOR RODS
- OFFSET CONCRETE FOUNDATION - 5' x 20", 10" B.C., 1" ANCHOR RODS
- ~~DRILL EXISTING MAN HOLE OR HAND HOLE~~

FOR INSTALLATION PLAN SEE SHEET 04-020
FOR REMOVAL PLAN SEE SHEET 04-027

CITY OF CHICAGO
DEPT. OF STREETS AND SANITATION
BUREAU OF ELECTRICITY
DIVISION OF ELECTRICAL ENGINEERING

DRAFTSMAN P.R.S./ B.T.G.	CHIEF DRAFTSMAN ROBERT CARTER	ENGINEER P.R.S./ B.T.G.
SUPERVISING ENGINEER ELEC. DESIGN ENGR.		DWG. NO. 04-008
ENGINEER OF ELECTRICITY:		DATE: 1/20/04
GEN'L. SUPT. OF ELECTRICITY:		
DEPUTY COMMISSIONER:		

ILLINOIS DEPARTMENT OF TRANSPORTATION
F.A.I. 90/94 (DAN RYAN EXPRESSWAY)
63rd St. to 57th St. (FRONTAGE ROADS)

STREET LIGHTING
UNDERGROUND CONDUIT FACILITIES

SCALE: 1" = 30'
DATE: February 11, 2005
DRAWN BY: B.T.G.
CHECKED BY: O.L.

REVISIONS	
NAME	DATE