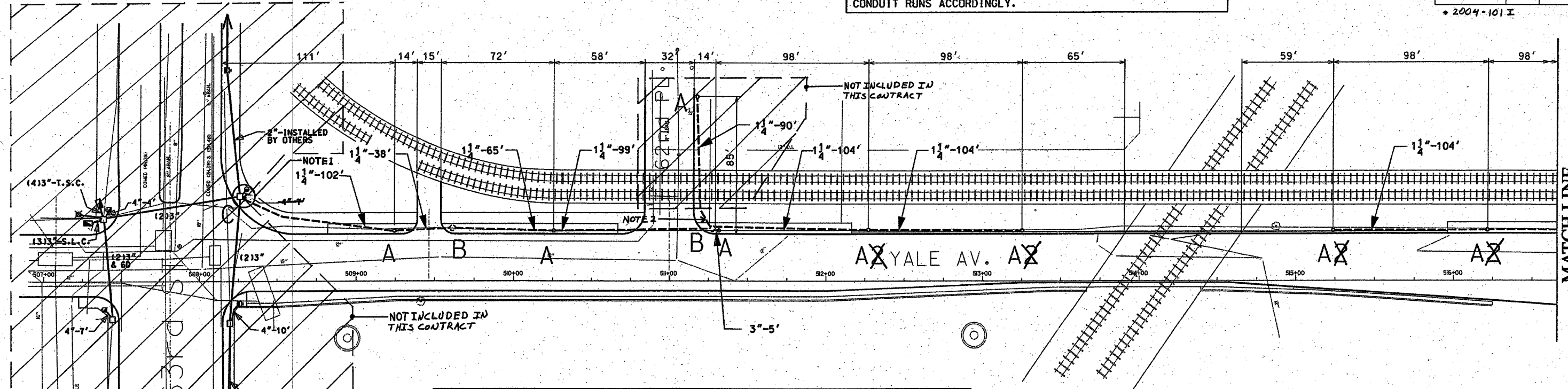
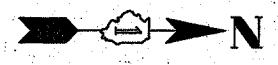


62842

F. A. RTE.	SECTION	COUNTY	TOTAL SHEETS	SHEET NO.
80/94	*	COOK	31	17
STA. 507+00		TO STA. 523+45		
FED. ROAD DIST. NO. 1		ILLINOIS		FED AID PROJECTS
* 2004-101 I				

NOTE: CONTRACTOR IS TO CONTACT ALL UTILITY COMPANIES TO VERIFY EXACT LOCATION OF UNDERGROUND UTILITIES PRIOR TO START OF CONSTRUCTION WORK. MOVE FOUNDATIONS AND CONDUIT RUNS ACCORDINGLY.



MATCH LINE
STATION 516+65

1 1/4" DIRECT BORED CONDUIT SCHEDULE #80 AS PER IDOT ARTICLE 810.03
 2" DIRECT BORED CONDUIT SCHEDULE #80 AS PER IDOT ARTICLE 810.03
 X 3" CONDUIT SCHEDULE #40 INSTALLED IN TRENCH AS PER IDOT ARTICLE 810.03
 2" GALVANIZED RIGID STEEL ELBOW ON STRUCTURE
 2" GALVANIZED RIGID STEEL CONDUIT INSTALLED IN TRENCH AS PER IDOT ARTICLE 810.03
 HAND HOLE - 30" x 36" WITH 24" FRAME AND COVER
 CONCRETE FOUNDATION - 5' x 20", 10" B.C., 1" ANCHOR RODS

NOTES: CONTRACTOR IS TO INSTALL UNDERGROUND CONDUIT AND PULL ROPE BETWEEN FOUNDATIONS AS WELL AS PERFORM THE FOLLOWING WORK ITEMS ACCORDING TO BUREAU OF ELECTRICITY SPECIFICATIONS:

"A" - INSTALL 20" x 5' FOUNDATION, 10" B.C., 1" ANCHOR RODS AS PER DRAWING No. 565, 2' OFF FACE OF CURB, UNLESS NOTED OTHERWISE. BUILD FOUNDATIONS FLUSH WITH SIDEWALK SURFACE.

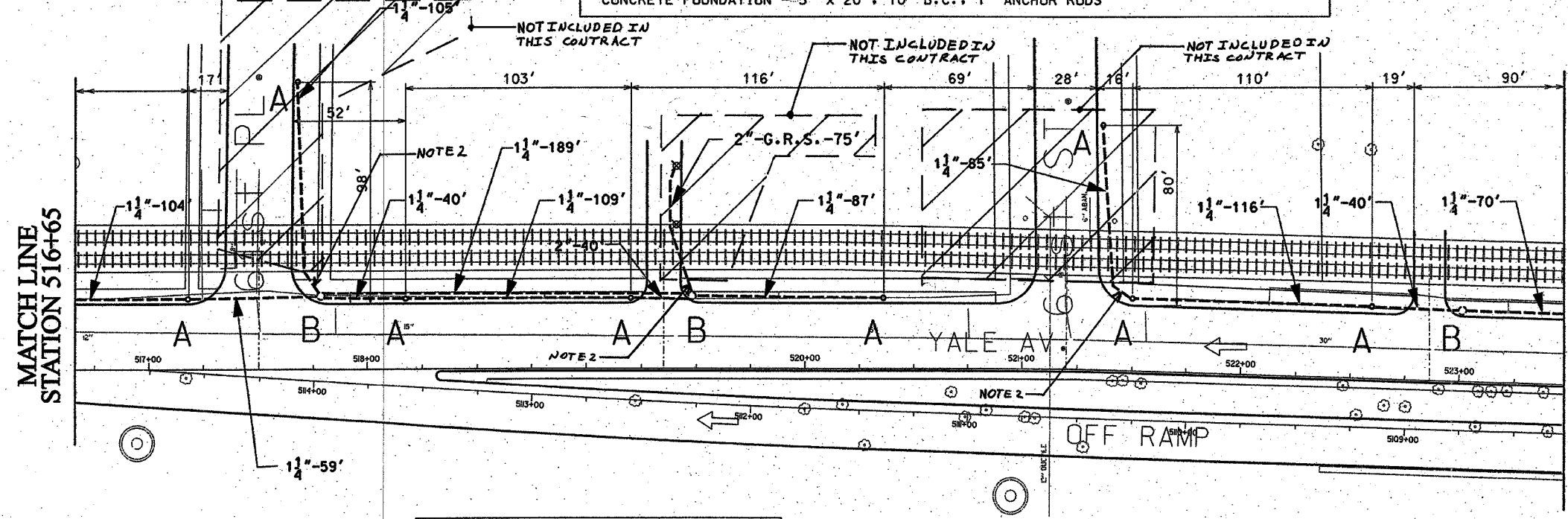
"A2" - INSTALL 20" x 5' FOUNDATION, 10" B.C., 1" ANCHOR RODS AS PER DRAWING No. 565, 2' OFF FACE OF CURB, UNLESS NOTED OTHERWISE. BUILD FOUNDATIONS FLUSH WITH SIDEWALK SURFACE.

"B" - INSTALL 30" HANDHOLE AS PER DRAWING NO. 867 WITH 24" FRAME AND COVER

"C" - DRILL EXISTING MANHOLE

NOTES:

- ROUTE PROPOSED CONDUIT RUN TO THE EXISTING MANHOLE OR HANDHOLE AS SHOWN. DRILL THE EXISTING MANHOLE OR HANDHOLE AND INSTALL PROPOSED CONDUIT THROUGH THE MANHOLE OR HANDHOLE WALL. SEE DRAWING BOE-2 FOR DETAILS.
- PROVIDE A CONDUIT STUB AT HANDHOLE EXTENDING TO ONE FOOT PAST THE LIMITS OF SIDEWALK REPLACEMENT. PROVIDE A CONDUIT CAP FOR THE CONDUIT STUB. THE CONDUIT CAP WILL BE INCLUDED IN THE UNIT PRICE FOR THE CONDUIT OF SPECIFIED TYPE AND DIAMETER. NO SEPARATE PAYMENT WILL BE MADE. SEE IDOT CONTRACT NO. 62835 FOR LIMITS OF SIDEWALK REPLACEMENT.



MATCH LINE
STATION 516+65

MATCH LINE
STATION 523+45
SEE SHEET 04-002

FOR INSTALLATION PLAN SEE SHEET 04-016
 FOR REMOVAL PLAN SEE SHEET 04-024

CITY OF CHICAGO			
DEPT. OF STREETS AND SANITATION BUREAU OF ELECTRICITY DIVISION OF ELECTRICAL ENGINEERING			
DRAFTSMAN: B. GARNSEY	CHIEF DRAFTSMAN: ROBERT CARTER	ENGINEER: B. GARNSEY	DWG. NO. 04-001
SUPERVISING ENGINEER:		ENGINEER OF ELECTRICITY:	
GEN'L. Supt. OF ELECTRICITY:		DEPUTY COMMISSIONER:	
SIZE: 22" 36"	SCALE: 1" = 30'	DATE: 1/20/04	
ILLINOIS DEPARTMENT OF TRANSPORTATION F.A.I. 90/94 (DAN RYAN EXPRESSWAY) 63rd St. TO 59th St. (FRONTAGE ROADS)			
STREET LIGHTING UNDERGROUND CONDUIT FACILITIES			
SCALE: 1" = 30'		DRAWN BY: B.T.G.	
DATE: February 11, 2005		CHECKED BY: O.L.	

REVISIONS	
NAME	DATE