

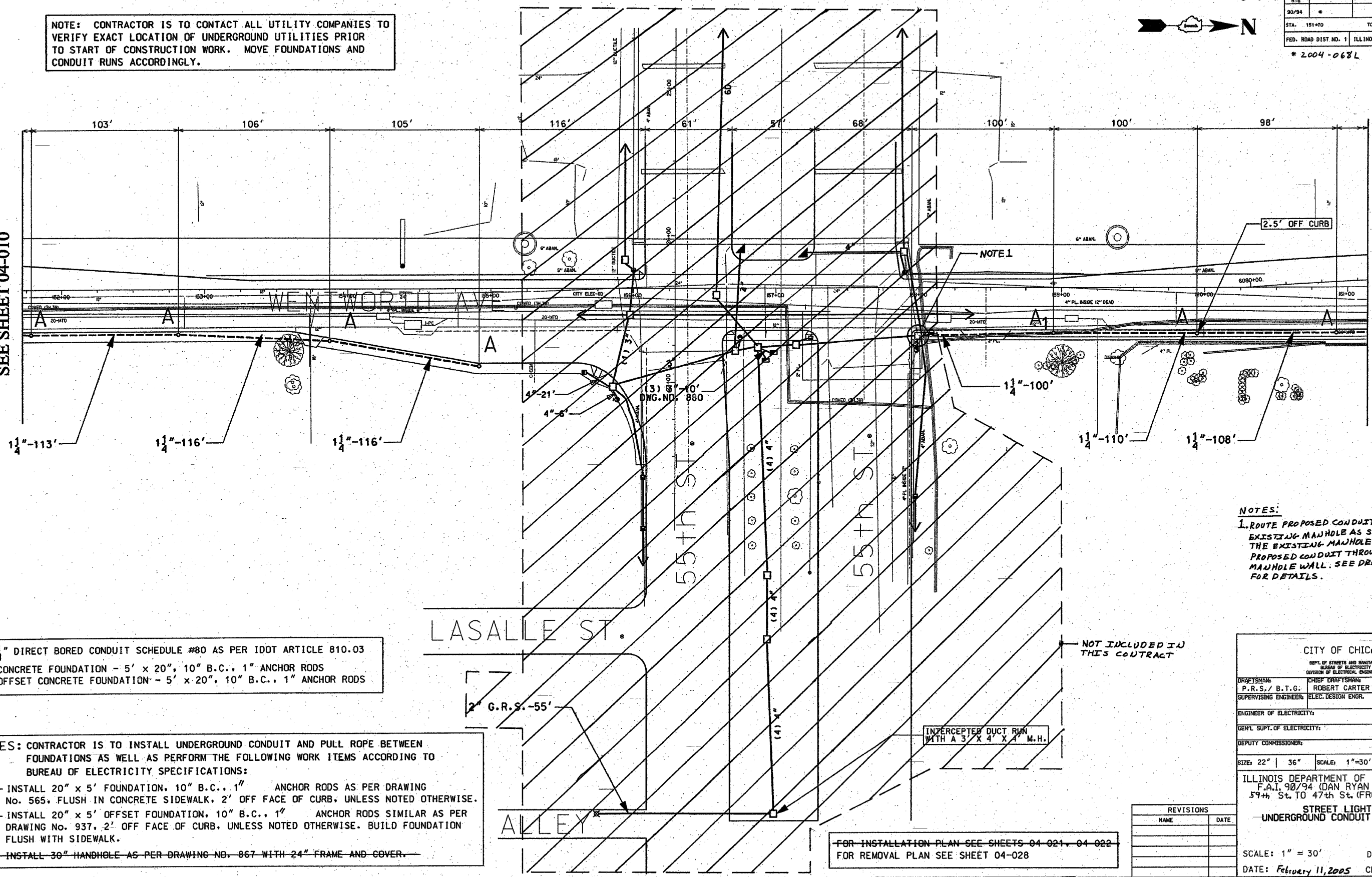
62807		F.A. RTE	SECTION	COUNTY	TOTAL SHEETS	SHEET NO
90/94	*	COOK	37	22		
STA. 151+70		TO STA. 161+10				
FED. ROAD DIST. NO. 1	ILLINOIS	FED AID PROJECTS				
* 2004-068L						

NOTE: CONTRACTOR IS TO CONTACT ALL UTILITY COMPANIES TO VERIFY EXACT LOCATION OF UNDERGROUND UTILITIES PRIOR TO START OF CONSTRUCTION WORK. MOVE FOUNDATIONS AND CONDUIT RUNS ACCORDINGLY.



MATCH LINE  
STATION 151+70  
SEE SHEET 04-010

MATCH LINE  
STATION 161+10  
SEE SHEET 04-012



NOTES:  
1. ROUTE PROPOSED CONDUIT RUN TO THE EXISTING MANHOLE AS SHOWN. DRILL THE EXISTING MANHOLE AND INSTALL PROPOSED CONDUIT THROUGH THE MANHOLE WALL. SEE DRAWING BOE-Z FOR DETAILS.

1 1/4" DIRECT BORED CONDUIT SCHEDULE #80 AS PER IDOT ARTICLE 810.03  
CONCRETE FOUNDATION - 5' x 20", 10" B.C., 1" ANCHOR RODS  
OFFSET CONCRETE FOUNDATION - 5' x 20", 10" B.C., 1" ANCHOR RODS

NOTES: CONTRACTOR IS TO INSTALL UNDERGROUND CONDUIT AND PULL ROPE BETWEEN FOUNDATIONS AS WELL AS PERFORM THE FOLLOWING WORK ITEMS ACCORDING TO BUREAU OF ELECTRICITY SPECIFICATIONS:  
"A" - INSTALL 20" x 5' FOUNDATION, 10" B.C., 1" ANCHOR RODS AS PER DRAWING No. 565. FLUSH IN CONCRETE SIDEWALK, 2' OFF FACE OF CURB, UNLESS NOTED OTHERWISE.  
"A1" - INSTALL 20" x 5' OFFSET FOUNDATION, 10" B.C., 1" ANCHOR RODS SIMILAR AS PER DRAWING No. 937. 2' OFF FACE OF CURB, UNLESS NOTED OTHERWISE. BUILD FOUNDATION FLUSH WITH SIDEWALK.  
"B" - INSTALL 30" HANDHOLE AS PER DRAWING NO. 867 WITH 24" FRAME AND COVER.

NOT INCLUDED IN THIS CONTRACT

INTERCEPTED DUCT RUN WITH A 3" X 4" X 4" M.H.

FOR INSTALLATION PLAN SEE SHEETS 04-021, 04-022  
FOR REMOVAL PLAN SEE SHEET 04-028

CITY OF CHICAGO		
DEPT. OF STREETS AND SANITATION		
BUREAU OF ELECTRICITY		
DIVISION OF ELECTRICAL ENGINEERING		
DRAFTSMAN:	CHIEF DRAFTSMAN:	ENGINEER:
P.R.S./ B.T.G.	ROBERT CARTER	P.R.S./ B.T.G.
SUPERVISING ENGINEER:	ELEC. DESIGN ENGR.	DWG. NO.
ENGINEER OF ELECTRICITY:		04-011
GENL. SUPT. OF ELECTRICITY:		
DEPUTY COMMISSIONER:		
SIZE: 22"   36"	SCALE: 1"=30'	DATE: 1/20/04

ILLINOIS DEPARTMENT OF TRANSPORTATION  
F.A.I. 90/94 (DAN RYAN EXPRESSWAY)  
59th St. TO 47th St. (FRONTAGE ROADS)  
STREET LIGHTING  
UNDERGROUND CONDUIT FACILITIES

SCALE: 1" = 30'  
DATE: February 11, 2005  
DRAWN BY: B.T.G.  
CHECKED BY: O.L.

REVISIONS	
NAME	DATE