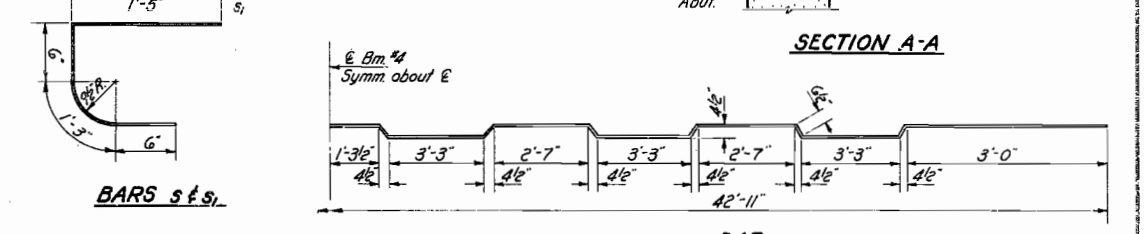
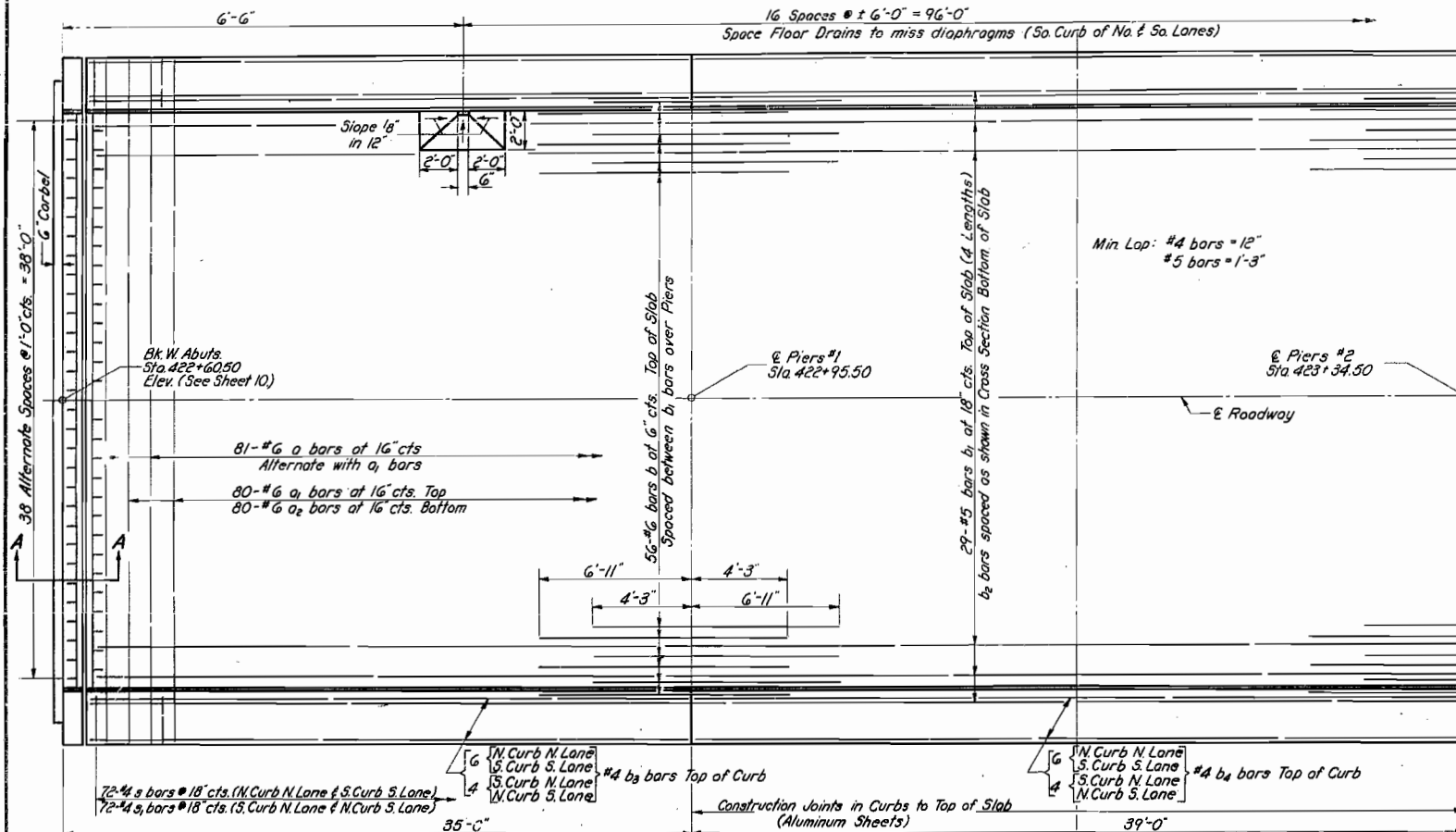
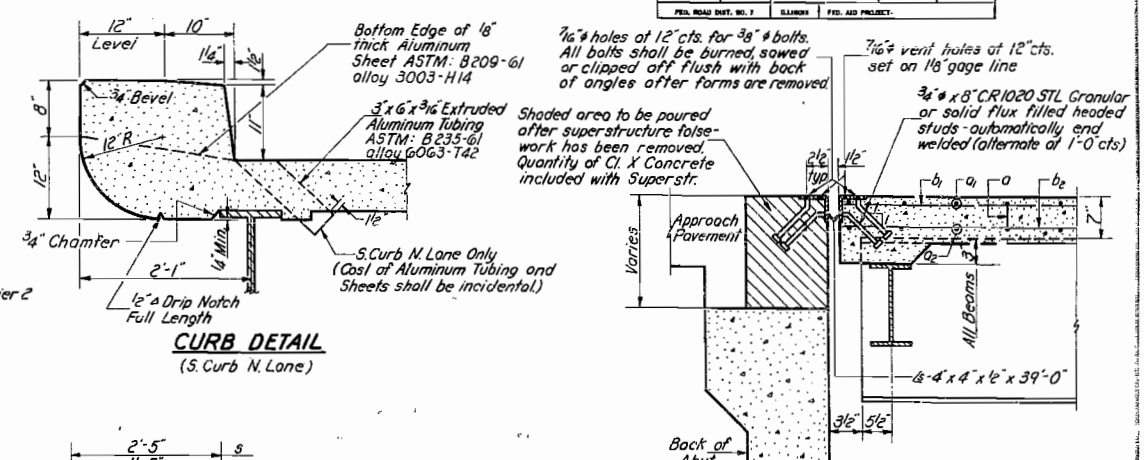
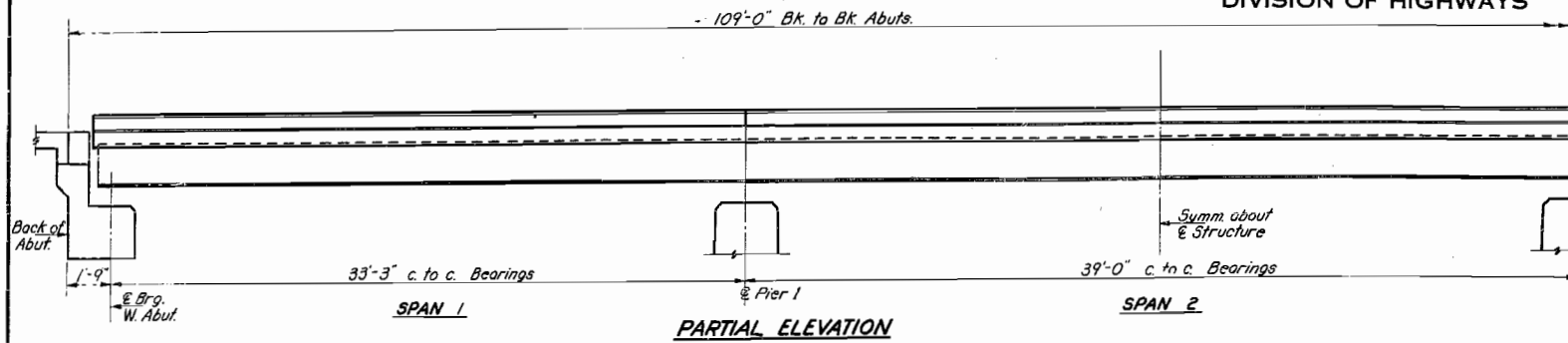


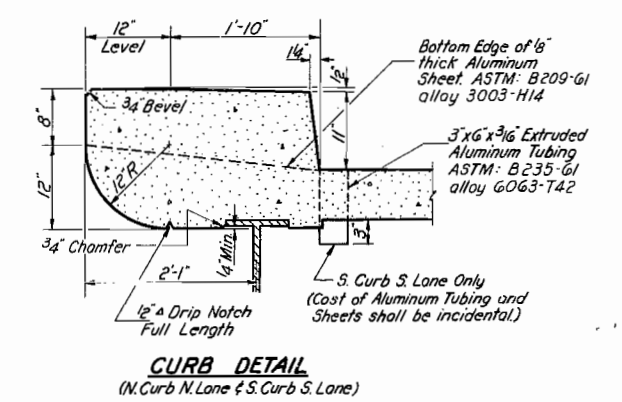
STATE OF ILLINOIS
DEPARTMENT OF PUBLIC WORKS & BUILDINGS
DIVISION OF HIGHWAYS

ROUTE NO.	SECTION	COUNTY	TOTAL SHEETS	SHEET NO.	SHEET NO. 2
F.A.R.T. 80	06-2B	Bureau	145	33	12 SHEETS
ILLINOIS		FED. AID PROJECT			



SEC. 06-2B
TWO STRUCTURES
BILL OF MATERIAL

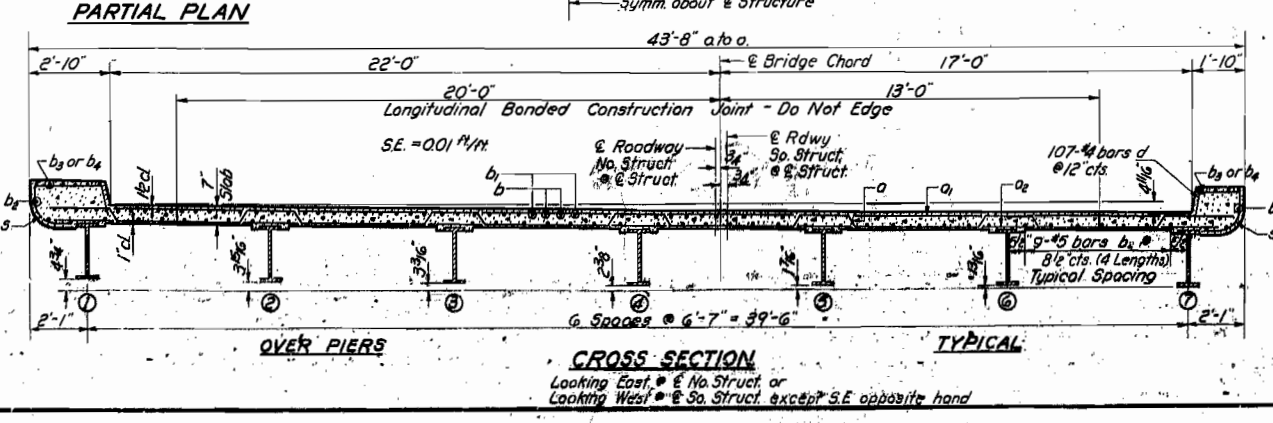
Bar	No.	Size	Length	Shape
a	162	#6	44'-11"	U
a1	160	#6	43'-0"	U
a2	160	#6	41'-10"	U
b	224	#6	11'-2"	U
b1	232	#5	27'-5"	U
b2	480	#5	27'-5"	U
b3	80	#4	17'-5"	U
b4	40	#4	19'-10"	U
d	428	#4	1'-3"	U
s	144	#4	4'-8"	U
s1	144	#4	3'-8"	U
Class X Concrete		Cu Yd	248.4	
Reinforcement Bars		Lb.	58,040	
Struct. Steel		Lb.	168,170	
Name Plates		Each	2	



METHOD OF DETERMINING FILLET HEIGHT 'f'
After all Structural Steel has been erected elevations of the top of the flanges of the beams shall be taken at the stations shown on Sheet #10. These elevations subtracted from the "Modified Slab Elevations" shown on Sheet #10, minus floor thickness equal the fillet heights above top of beams.

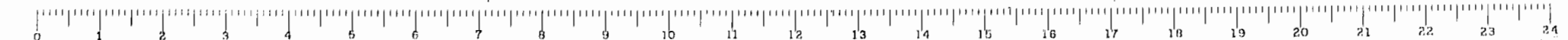
DESIGN STRESSES
fs = 20,000 psi. Structural Steel
fs = 20,000 psi. Reinforcement
fc = 1,400 psi. Superstructure.
fc = 1,400 psi. Substructure.
n = 10

SUPERSTRUCTURE
NORTH & SOUTH LANES
DRAINAGE DITCH
F.A.I. RT 80 SEC. 06-2B
BUREAU COUNTY
STA. 423+15



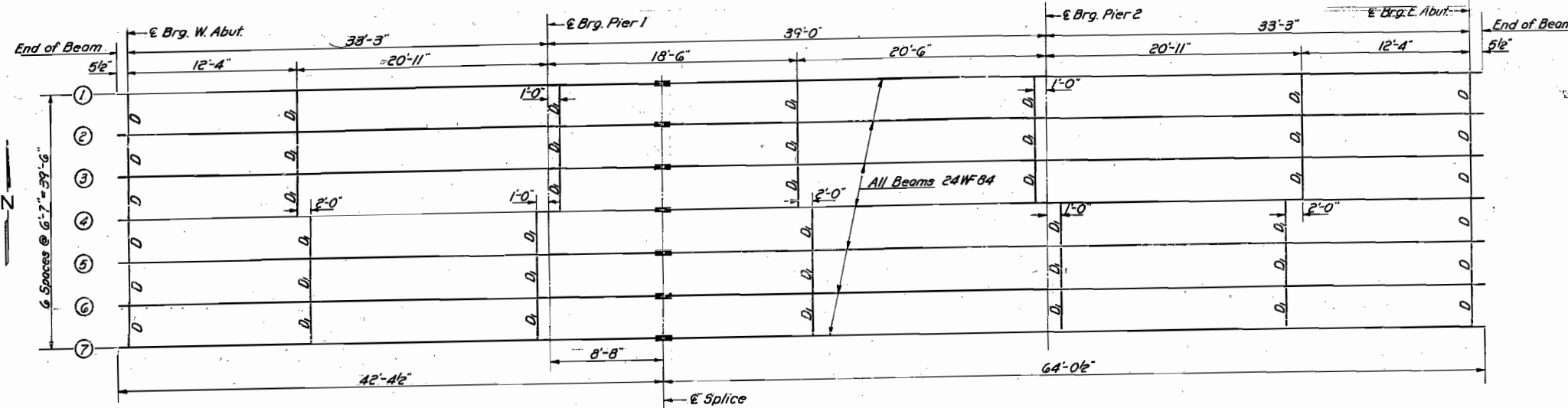
DESIGNED	Engineer	Aug 13 1962
CHECKED	W. B. Benham	
EXAMINED	W. B. Benham	
DRAWN	J.L. Armstrong	
CHECKED	K.L.O.	

See 10-1-63 W.P. Amend. Division of Highways for information to them from 10-1-63 form 204



STATE OF ILLINOIS
DEPARTMENT OF PUBLIC WORKS & BUILDINGS
DIVISION OF HIGHWAYS

ROUTE NO.	SECTION	COUNTY	TOTAL SHEETS	SHEET NO.	SHEET NO. 3
1-1	80 0628	Bureau	145	39	12 SHEETS
FED. ROAD DIST. NO. 1	ILLINOIS	FED. AID PROJECT:			



ELEVATIONS TOP OF BEAMS
NORTH STRUCTURE

Locations	E Beams						
	1	2	3	4	5	6	7
E Brg. W. Abut.	64285	64278	64271	64265	64258	64252	64245
E Brg. Pier 1	64285	64279	64272	64265	64259	64252	64246
E Splice	64285	64279	64272	64265	64259	64252	64246
E Brg. Pier 2	64290	64283	64277	64270	64264	64257	64250
E Brg. E. Abut.	64295	64289	64282	64275	64269	64262	64256

SOUTH STRUCTURE

Locations	E Beams						
	1	2	3	4	5	6	7
E Brg. W. Abut.	64279	64272	64265	64259	64252	64246	64239
E Brg. Pier 1	64279	64272	64266	64259	64253	64246	64240
E Splice	64279	64272	64266	64259	64253	64246	64240
E Brg. Pier 2	64284	64277	64271	64264	64258	64251	64244
E Brg. E. Abut.	64289	64283	64276	64269	64263	64256	64250

Note: Elevations refer to top of beam flanges.

FRAMING PLAN

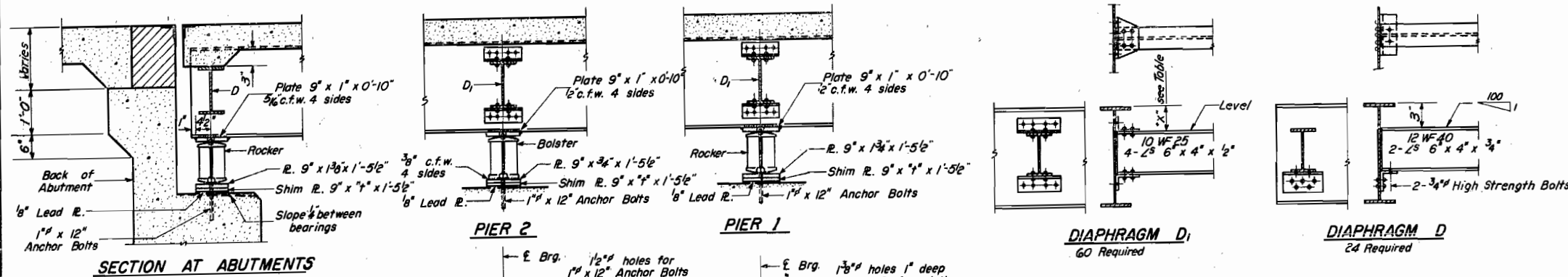
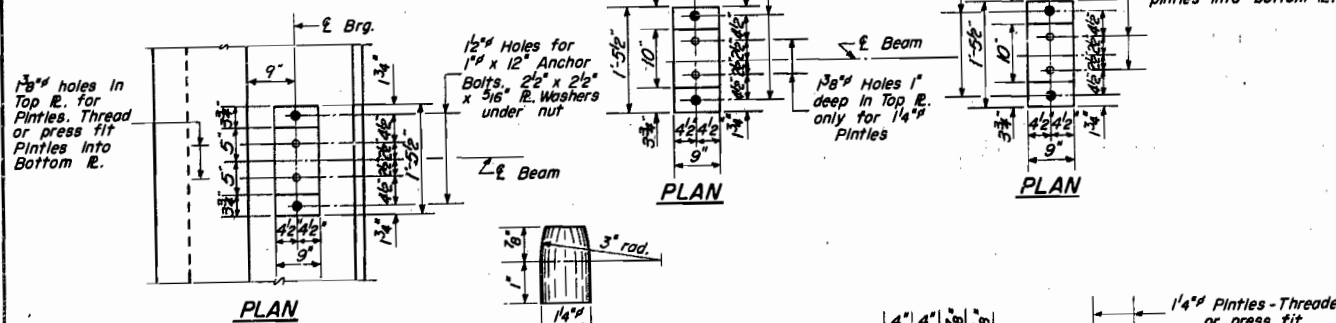


TABLE OF "x" DIMENSIONS

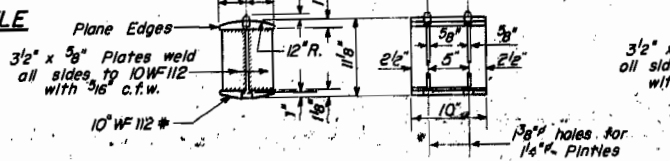
Beams	x"	Side
1	8 3/16"	South
2	7 3/8"	Both
3	6 9/16"	Both
4	5 3/4"	North
5	8 3/16"	South
6	7 3/8"	Both
7	6 9/16"	Both

TABLE OF "t" DIMENSIONS

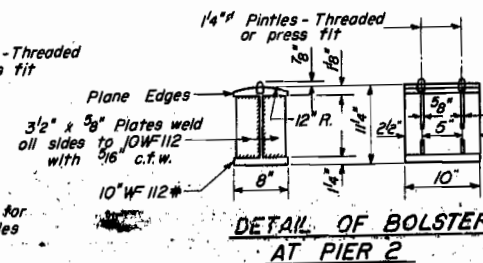
Location	Beams						
	1	2	3	4	5	6	7
W. Abut.	0	13/16"	0	13/16"	0	13/16"	0
Pier 1	0	13/16"	0	13/16"	0	13/16"	0
Pier 2	0	13/16"	0	13/16"	0	13/16"	0
E. Abut.	0	13/16"	0	13/16"	0	13/16"	0



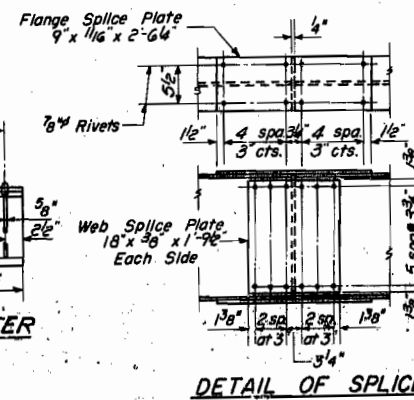
DETAIL OF PINTLE



DETAIL OF ROCKER AT PIER 1 & ABUTS



DETAIL OF BOLSTER AT PIER 2



DETAIL OF SPLICE

STRUCTURAL STEEL
NORTH & SOUTH LANES
DRAINAGE DITCH
F.A.I. RT. 50 SEC. 0628
BUREAU COUNTY
STA. 423+15

DESIGNED: Eugene D. ...
CHECKED: K. J. ...
DRAWN: W. A. ...
EXAMINED: W. E. ...
APPROVED: ...

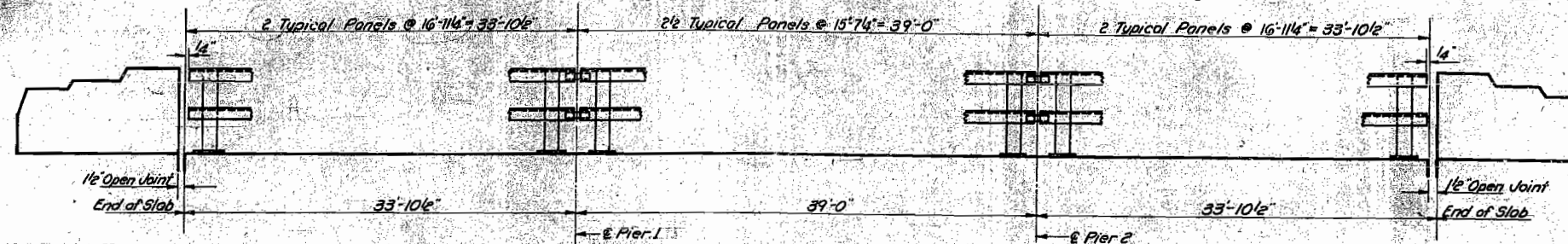
I-2 Re-drawn 8-18-59

Rev. 1-25-53 Removal of Section W-2

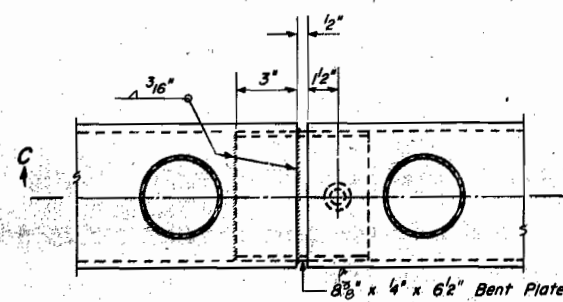


STATE OF ILLINOIS
DEPARTMENT OF PUBLIC WORKS & BUILDINGS
DIVISION OF HIGHWAYS

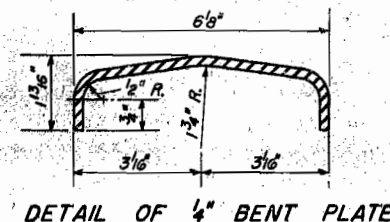
ROUTE NO.	SECTION	COUNTY	TOTAL SHEETS	SHEET NO.	SHEET NO. 4 12 SHEETS
1-180	06-2-B	Bureau	145	40	
P.L. ROAD DIST. NO. 1	BLANK	P.L. NO. PROJECT			



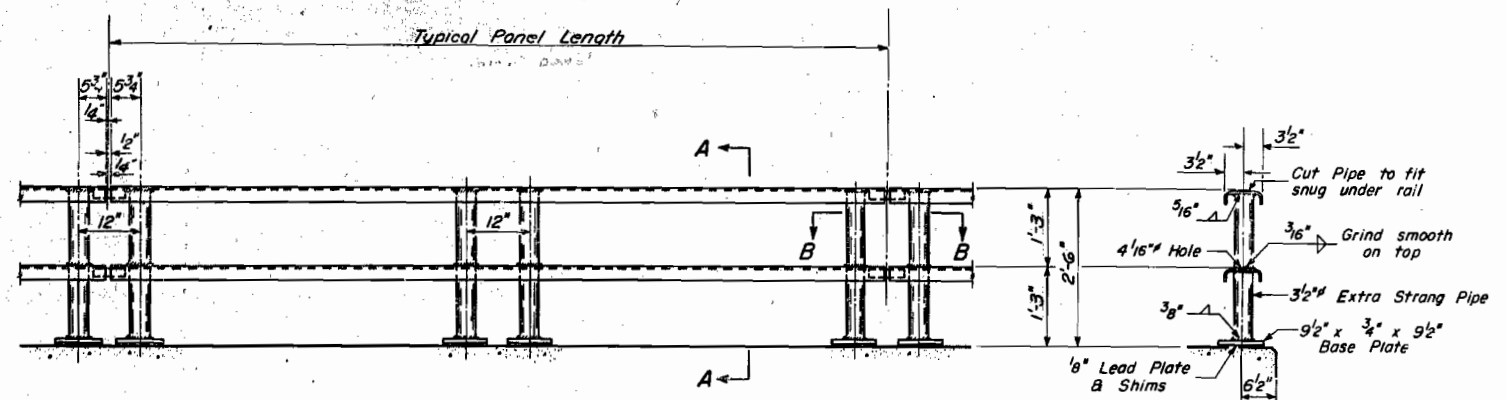
HANDRAIL ELEVATION



SECTION B-B

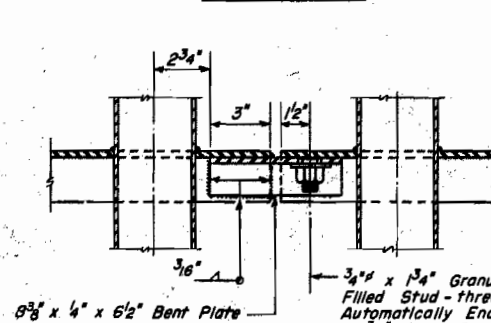


DETAIL OF 1/4" BENT PLATE

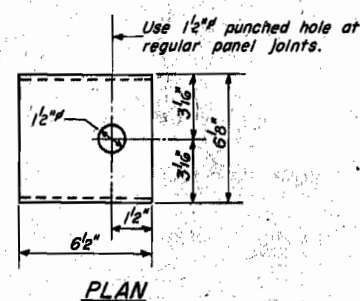


ELEVATION TYPICAL PANEL

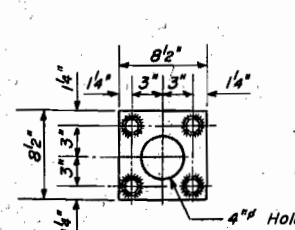
SECTION A-A



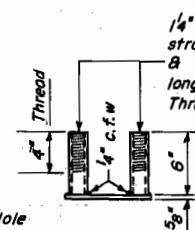
SECTION C-C



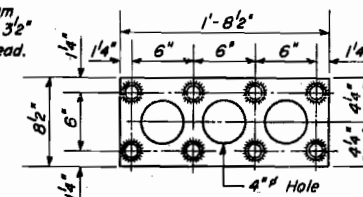
PLAN



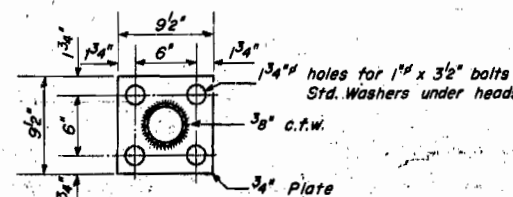
ANCHOR DEVICE
For Single Post at each
End of Panel



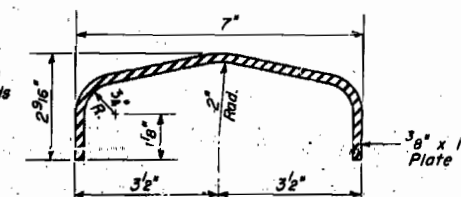
END VIEW



ANCHOR DEVICE
For Double Posts within
Each Panel



BASE PLATE
ALL POSTS



DETAIL OF RAIL

GENERAL NOTES

Provide 1-3/8" and 2-1/16" Shims for 50% of the Posts.

BILL OF MATERIAL

Item	Unit	Quantity
Metal Handrail	Lin.Ft.	427

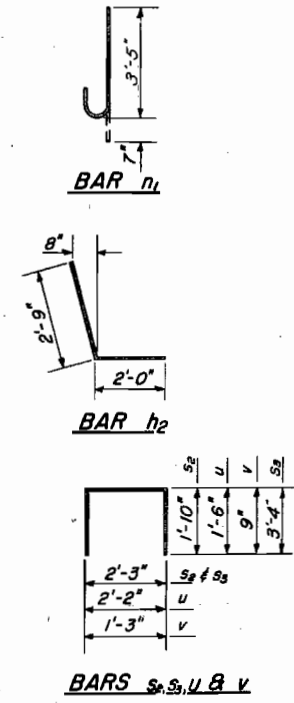
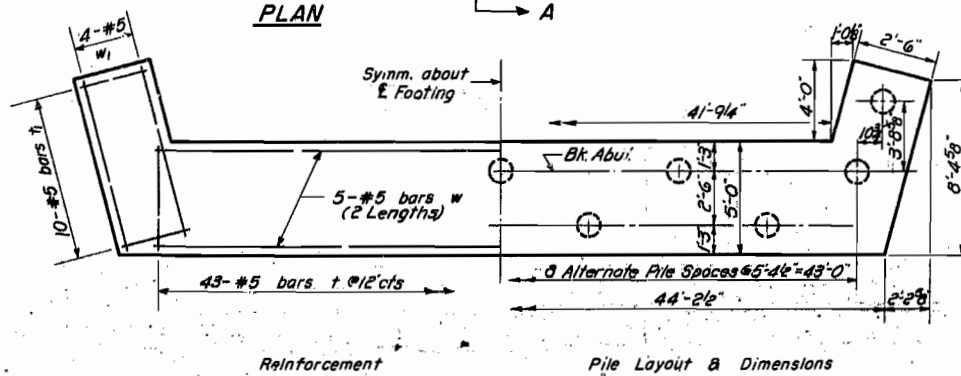
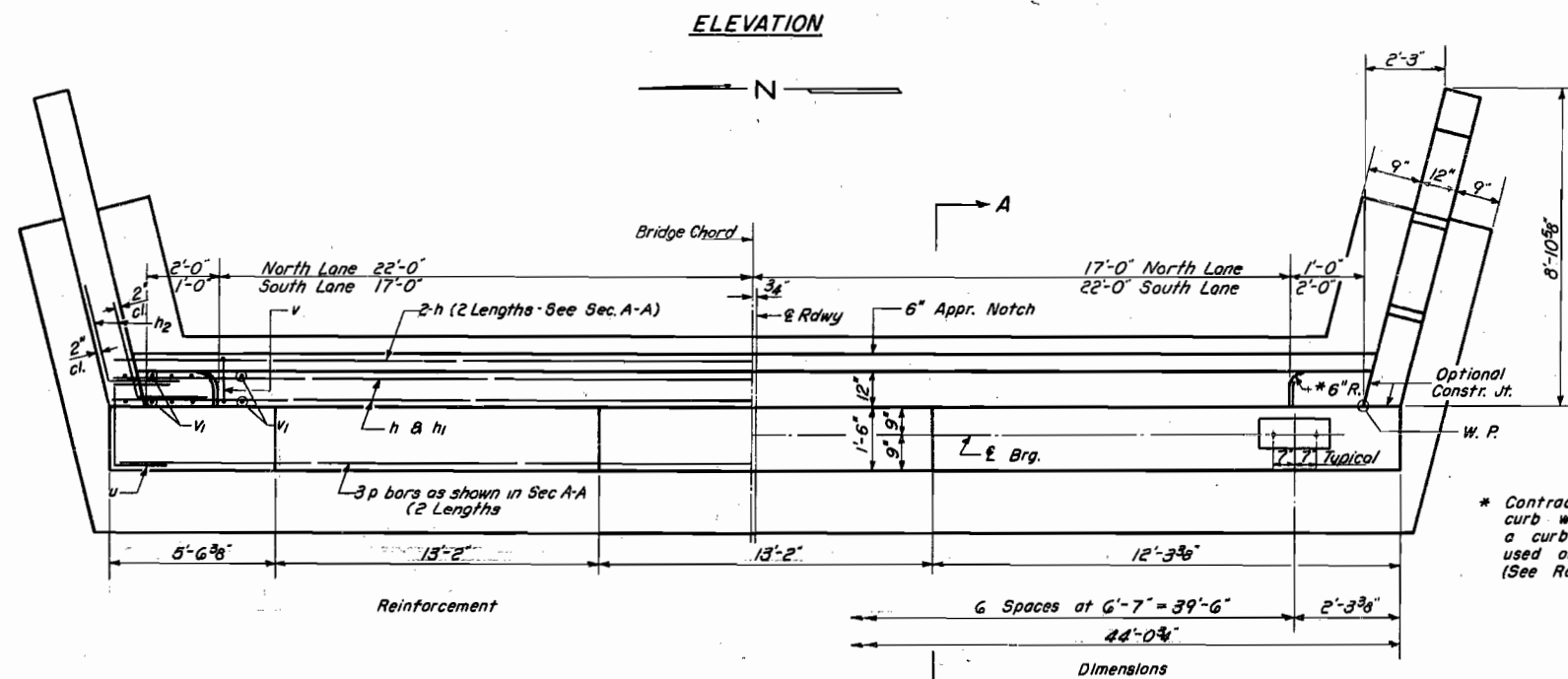
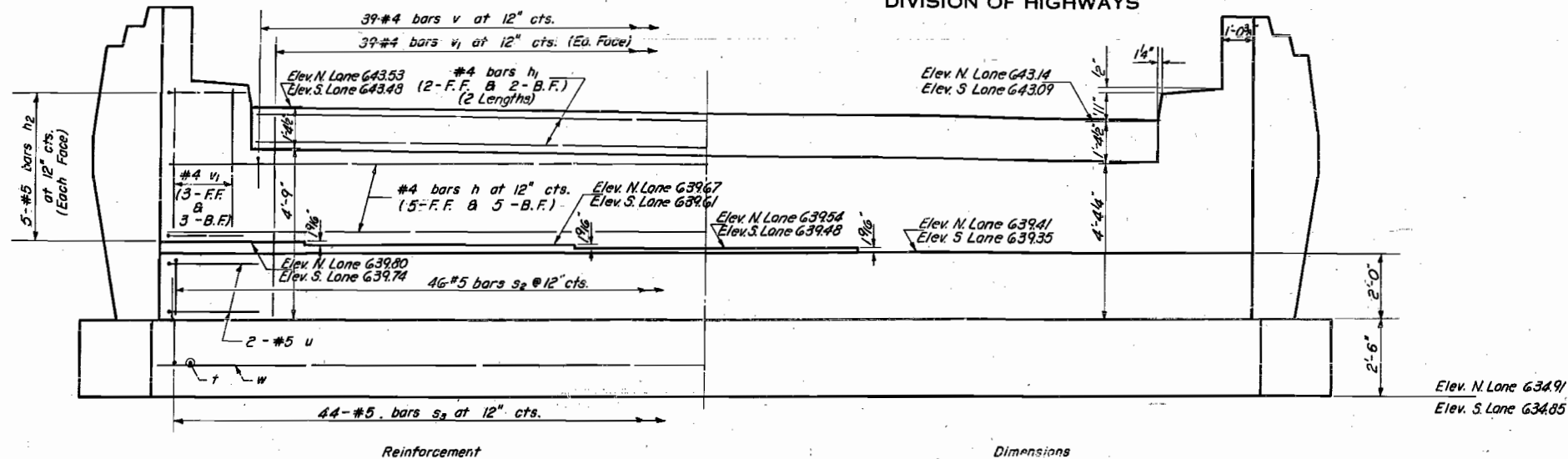
HANDRAIL DETAILS
NORTH & SOUTH LANES
DRAINAGE DITCH
F.A.I. RT. 80 SEC. 06-2B
BUREAU COUNTY
STA. 423+15

DESIGNED <i>Engel</i>	EXAMINED <i>A.E. B...</i>	AUG 13 1962
CHECKED <i>R.H. De...</i>	PASSED	
DRAWN <i>J.L. Armstrong</i>	APPROVED	
CHECKED <i>R.S.O.</i>		

R-12 Drawn 2-3-60

STATE OF ILLINOIS
DEPARTMENT OF PUBLIC WORKS & BUILDINGS
DIVISION OF HIGHWAYS

ROUTE NO.	SECTION	COUNTY	TOTAL SHEETS	SHEET NO.	SHEET NO.
60062-B	Bureau	Bureau	145	42	12 SHEETS



TWO ABUTMENTS BAR LIST

Bar	No.	Size	Length	Shape
h	48	#4	22'-5"	—
h1	16	#4	19'-10"	—
h2	40	#5	4'-9"	L
n1	40	#5	4'-0"	J
p	12	#7	22'-9"	—
s2	88	#5	5'-11"	□
s3	88	#5	8'-11"	□
t	86	#5	4'-9"	—
v	40	#5	2'-2"	—
u	8	#5	5'-2"	□
v	78	#4	2'-9"	□
v1	180	#4	5'-4"	—
w	20	#5	22'-0"	—
w1	16	#5	9'-9"	—

TWO ABUTMENTS BILL OF MATERIAL

Item	Unit	Quantity
Class X Concrete	Cu. Yds.	83.1
Reinforcement Bars	Lbs.	5880
Concrete Piles	Lin. Ft.	840
Test Piles (Concrete)	Each	1

* Contractor shall construct curb without radius when a curb & gutter are used on bridge approaches. (See Road Plans).

PILE DATA
Type - Concrete
Capacity - 25 Ton Min.
Est. Length - 40 Feet
No. Req'd. - 22
(Including 1 Test Pile)

Note: Bill of Material includes Reinforcement and Class X Concrete for Four End Posts.

EAST ABUTMENTS NORTH & SOUTH LANES DRAINAGE DITCH
E.A.I. RT. 80 SEC. 06-28
BUREAU COUNTY
STA. 423+15

For Details of End Post & Sec. A-A See Sheet No. 7.

DESIGNED: August Beatty
CHECKED: J.L. Schmitz
DRAWN: W.A. Sausaman
CHECKED: R.H.D.

EXAMINED: W.G. Baumann
PASSED: J.L. Armstrong
APPROVED: [Signature]

AUG 13 1962

A-7 Drawn 1-27-60



STATE OF ILLINOIS
DEPARTMENT OF PUBLIC WORKS & BUILDINGS
DIVISION OF HIGHWAYS

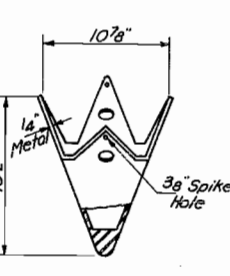
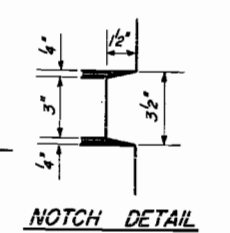
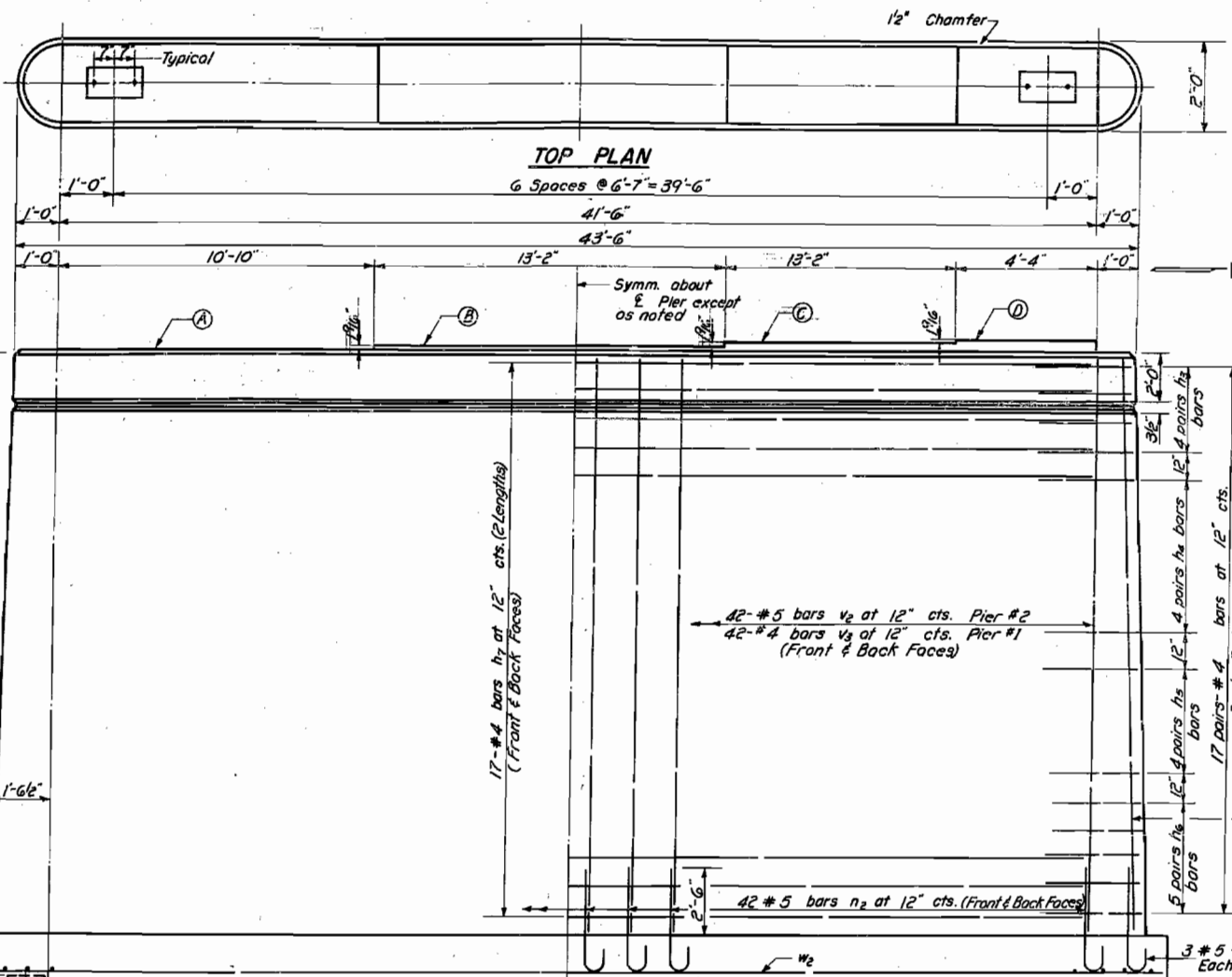
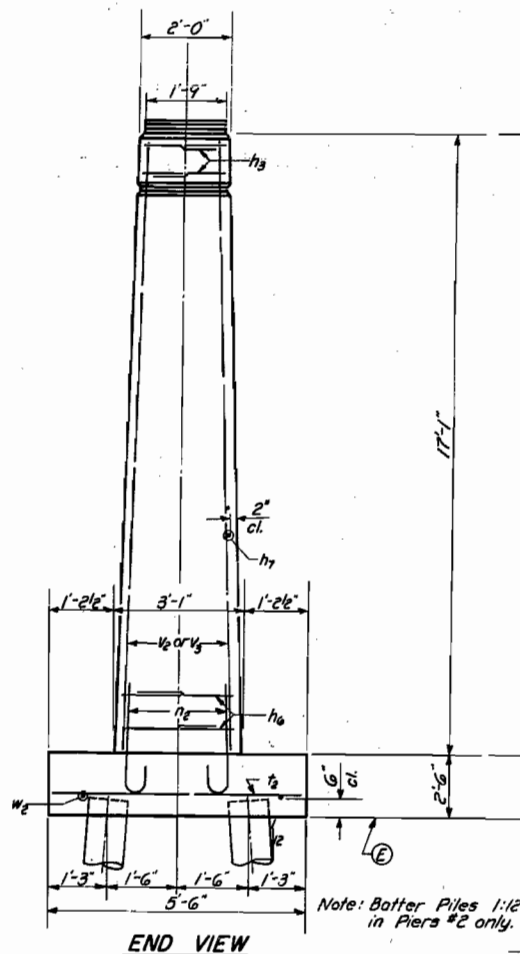
ROUTE NO.	SECTION	COUNTY	TOTAL SHEETS	SHEET NO.	SHEET NO. 8
1-180	No. 1-B	Bureau	145	4A	12 SHEETS
FED. ROAD DIST. NO. 7	ILLINOIS	FED. AID PROJECT			

PILE DATA

Type - Untreated Timber
Capacity - 16 Tons
Est. Length 25'-0"
No. Req'd. 88 (4 Piers)
Including 2 Test Piles

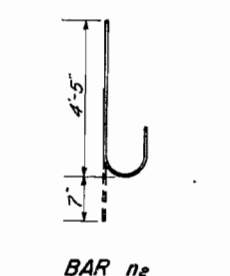
PIER 1 & 2 ELEVATIONS

Location	A	B	C	D	E
Pier 1 N. Lane	63928	63941	63954	63967	61970
Pier 2 N. Lane	63940	63953	63966	63979	61982
Pier 1 S. Lane	63922	63935	63948	63961	61964
Pier 2 S. Lane	63934	63947	63960	63973	61976

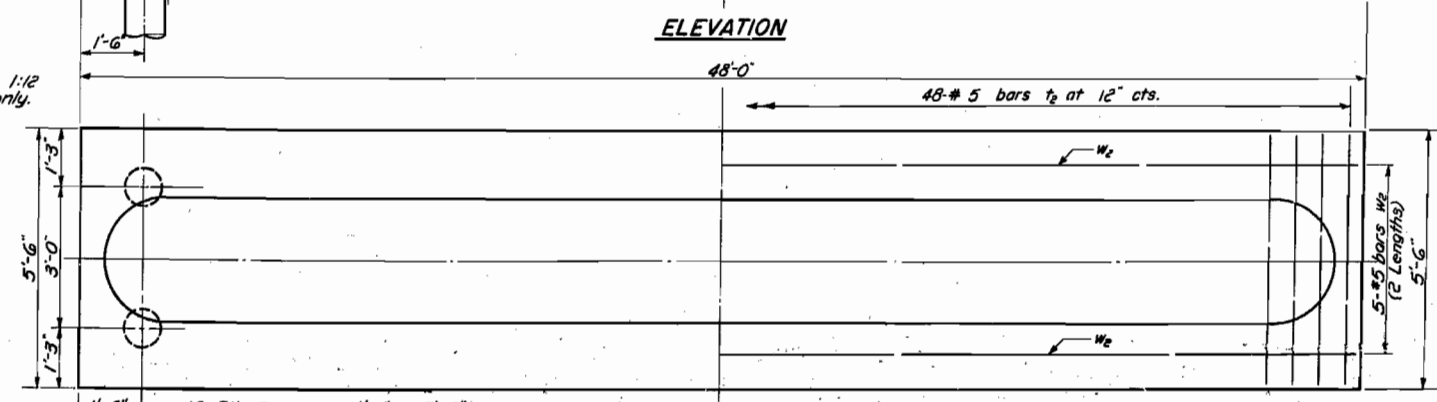


DETAIL OF BARS
h3, h4, h5, h6

Bar	R	A
h3	10 1/2"	1'-10"
h4	1'-0"	2'-0"
h5	1'-1/2"	2'-3"
h6	1'-3"	2'-5"



ELEVATION



FOOTING PLAN



4 PIERS BILL OF MATERIAL

Bar	No.	Size	Length	Shape
h3	64	#4	3'-4"	U
h4	64	#4	3'-6"	U
h5	64	#4	3'-9"	U
h6	80	#4	3'-11"	U
h7	272	#4	21'-2"	—
n2	360	#5	5'-0"	C
t2	192	#5	5'-2"	—
v2	180	#5	16'-9"	—
v3	180	#4	16'-9"	—
w2	40	#5	24'-5"	—
Class A Concrete		Cu. Yds.	328.3	
Reinforcement Bars		Lbs.	13,590	
Untreated Piles		Lin. Ft.	2150	
Test Piles (Timber)		Each	2	
Metal Shoes		Each	86	

PIERS 1 & 2
NORTH & SOUTH LANES
DRAINAGE DITCH
FAL R180 SEC. 016-211
BUREAU COUNTY
STA 423+15

DESIGNED *Rogers & Brink*
CHECKED *K.L. O.*
DRAWN *W.A. Sausaman*
EXAMINED *H.V.G. 13 10/62*
PASSED *W.C. B...*
APPROVED