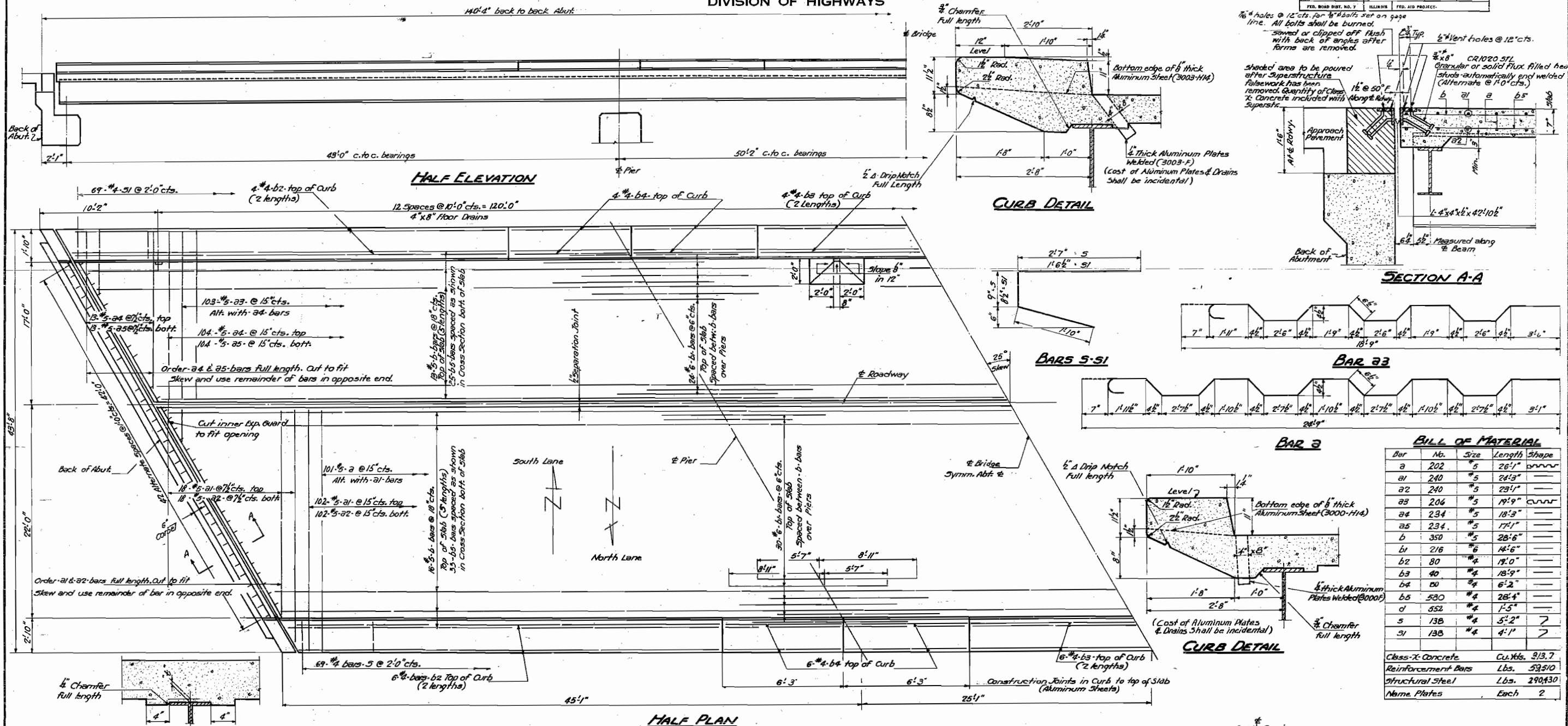




STATE OF ILLINOIS  
DEPARTMENT OF PUBLIC WORKS & BUILDINGS  
DIVISION OF HIGHWAYS

ROUTE NO.	SECTION	COUNTY	TOTAL SHEETS	SHEET	SHEET NO. 2 10 SHEETS
S.A.L. 80	06-18-3 06-1F-3	BUREAU	21	7	
FED. ROAD DIST. NO. 7		ILLINOIS	FED. AID PROJECT		

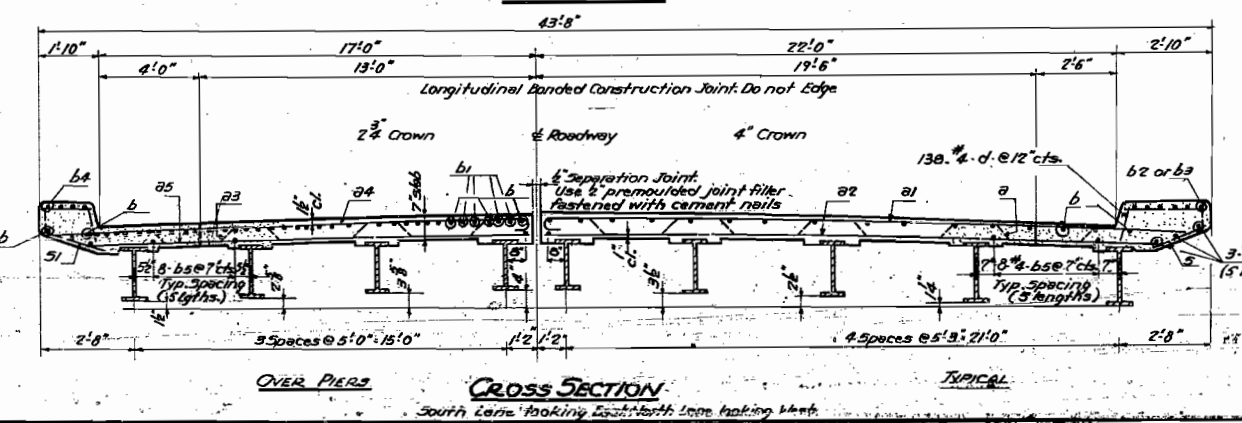
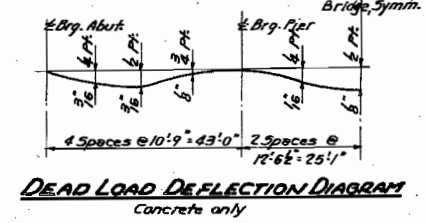


**BILL OF MATERIAL**

Bar	No.	Size	Length	Shape
a	202	#5	26'1"	curved
a1	240	#5	24'3"	---
a2	240	#5	23'1"	---
a3	204	#5	19'9"	curved
a4	234	#5	18'3"	---
a5	234	#5	17'1"	---
b	350	#5	28'6"	---
b1	276	#6	14'6"	---
b2	80	#4	19'0"	---
b3	40	#4	18'9"	---
b4	80	#4	6'2"	---
b5	530	#4	28'4"	---
c	552	#4	1'5"	---
s	138	#4	3'2"	7
s1	138	#4	4'1"	7

Class-X Concrete Cu. Yds. 913.7  
Reinforcement Bars Lbs. 53,510  
Structural Steel Lbs. 290,430  
Name Plates Each 2

**METHOD OF DETERMINING FILLET HEIGHT "f"**  
After all Structural Steel has been erected elevations of the top flanges of the beams shall be taken at intervals not to exceed 10 ft. from these elevations subtract the increment of deflections for these points determined from Dead Load Deflection Diagram. The elevations so obtained subtracted from the theoretical grade elevations minus floor thickness equals the fillet heights above top of beam.



**DESIGN STRESSES**

F5	18000 #10 Struck
F5	20000 #6 Struck
FC	1400 #10 Super
FC	1400 #10 Substr.
D	10

**SUPERSTRUCTURE  
NORTH & SOUTH LANES  
COAL CREEK  
F.A.I. RR. 80-SEC. 06 (1B-3, 1F-3)  
BUREAU COUNTY  
STATION 202+80**

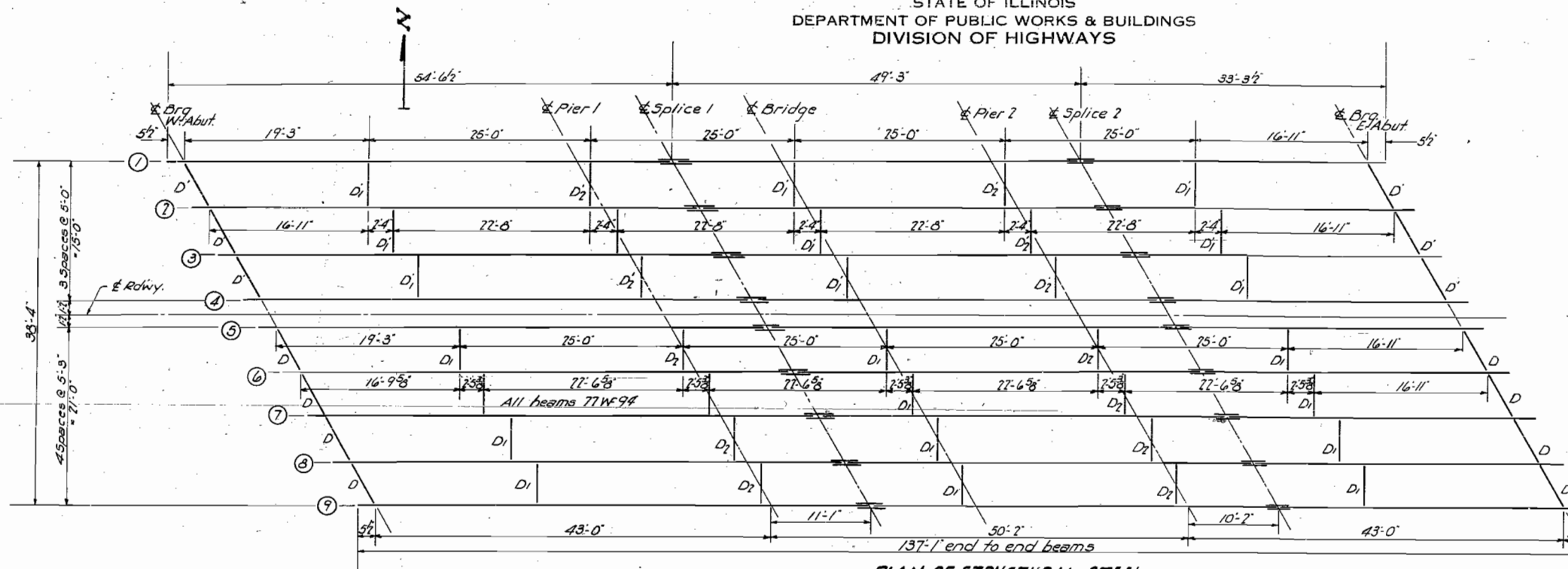
DESIGNED	<i>C. J. ...</i>	EXAMINED	<i>M. ...</i>
CHECKED	<i>A. ...</i>	PASSED	<i>E. ...</i>
DRAWN	<i>M. ...</i>	APPROVED	<i>R. ...</i>
CHECKED	H.K.		

Revised - 4-21-41 - WJM - In title block, changed station designation from 203+20 to 202+80. Rev. 4/24/42 Bottom slab (Distribution steel) changed from 80% to 67% quantity of Reinf. Bars changed from 83,820 to 53,510. In Cross Sect. typical spacing changed from 5'-4.65 @ 11' to 8'-4.65 @ 7' cts. In Bill of Mat. - 25 bars changed from 270 to 280.

STATE OF ILLINOIS  
DEPARTMENT OF PUBLIC WORKS & BUILDINGS  
DIVISION OF HIGHWAYS

ROUTE NO.	SECTION	COUNTY	TOTAL SHEETS	SHEET NO.
1180	1B-3	BUREAU	21	8
	1F-3		8	7
FED. ROAD DIST. NO. 1	ILLINOIS	FED. AID PROJECT		

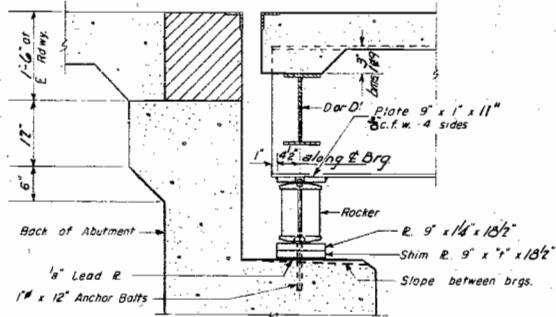
SHEET NO. 8  
10 SHEETS



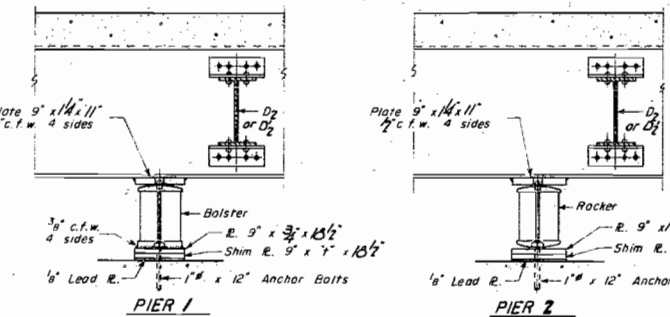
PLAN OF STRUCTURAL STEEL

TABLE OF "D" DIMENSIONS FOR DIAPHRAGMS D & D'

BEAM	1	2	3	4	5	6	7	8	9
"D"	3	4 1/2	5 1/2	5 1/2	7	4 1/2	5 1/2	4 1/2	3

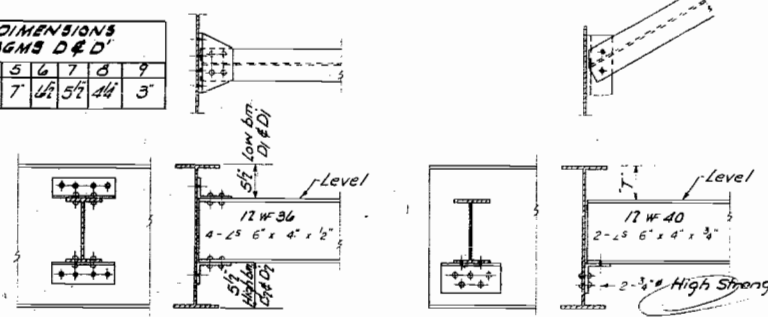


SECTION AT ABUTMENT



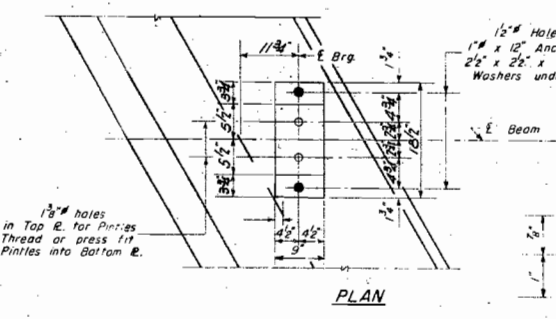
PIER 1

PIER 2

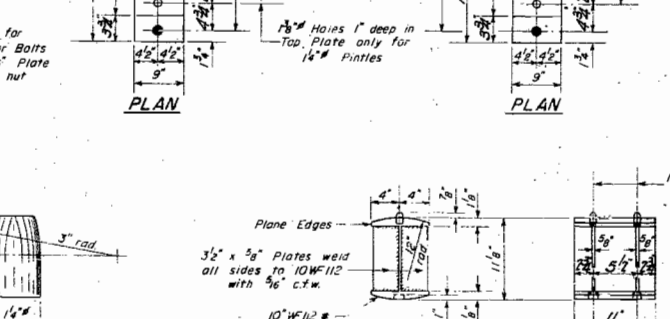


DIAPHRAGM D<sub>1</sub>, D<sub>2</sub> & D<sub>2</sub>'

DIAPHRAGM D & D'



PLAN



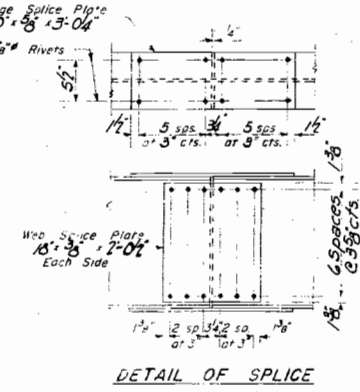
PLAN

PLAN

DETAIL OF PINTLE

DETAIL OF ROCKER AT PIER 2 & ABUTS.

DETAIL OF BOLSTER AT PIER 1



DETAIL OF SPLICE

TABLE OF "D" DIMENSIONS

BEAM	"D"
1	0
2	0
3	6
4	1 1/2
5	1 1/2
6	0
7	0
8	0
9	0

DESIGNED *C. S. Kautz*  
 EXAMINED *Sept 14 19 57*  
 CHECKED *Hugo Kagan*  
 PASSED *J. S. Soudowal*  
 DRAWN *W. A. Soudowal*  
 APPROVED *R. P. Bruchmann*  
 CHECKED *H. K.*

STRUCTURAL STEEL  
 SOUTH LANE  
 COAL CREEK  
 F.A.I. RT. 80 SEC. 06 (1B-3, 1F-3)  
 BUREAU COUNTY  
 STA. 702+80

I-2-R DRAWN 5-13-57  
 Revised 4-21-61 - RJM - In title block, changed station designation from 203+20 to 202+80.

STATE OF ILLINOIS  
DEPARTMENT OF PUBLIC WORKS & BUILDINGS  
DIVISION OF HIGHWAYS

PROJECT NO.	SECTION	COUNTY	TOTAL SHEETS	SHEET NO.
11-1-80	06-1B-3 16-1F-3	BUREAU	21	9
FED. ROAD DIST. NO.	ILLINOIS	FED. AID PROJECT	8	8

SHEET NO. 4  
OF SHEETS

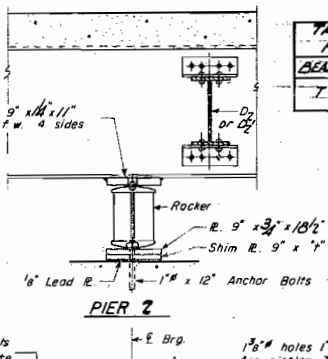
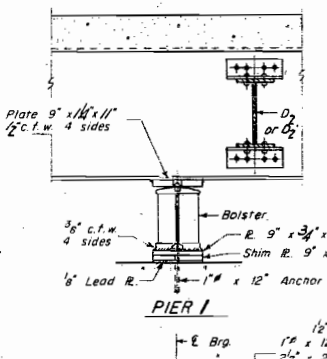
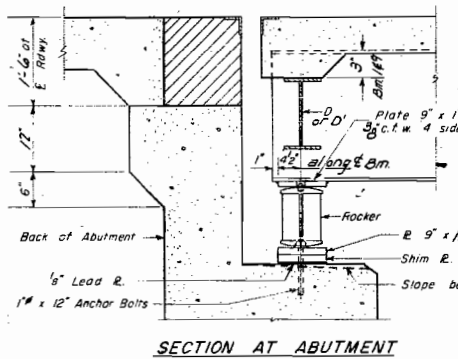
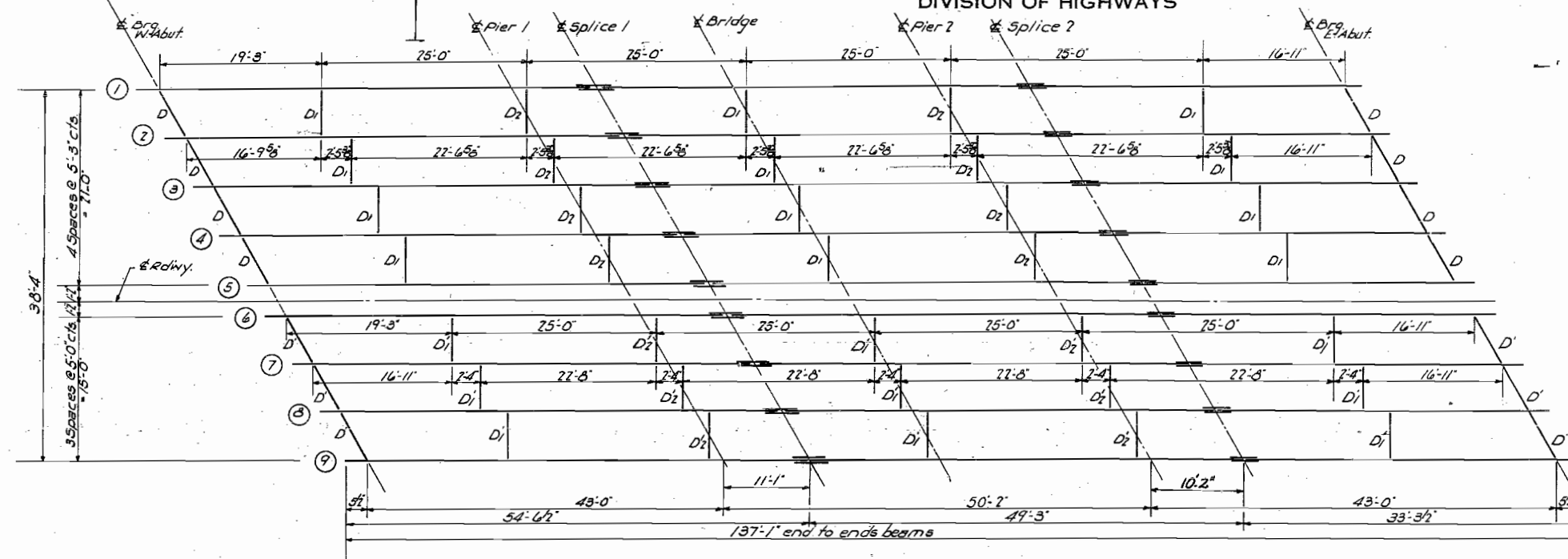


TABLE OF "T" DIMENSIONS FOR DIAPHRAGMS D & D

BEAM	1	2	3	4	5	6	7	8	9
T	3'	4'	5'	6'	7'	5'	5'	4'	3'

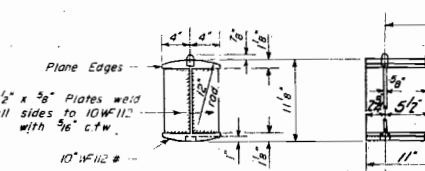
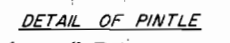
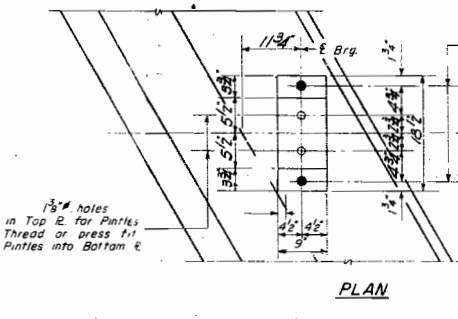
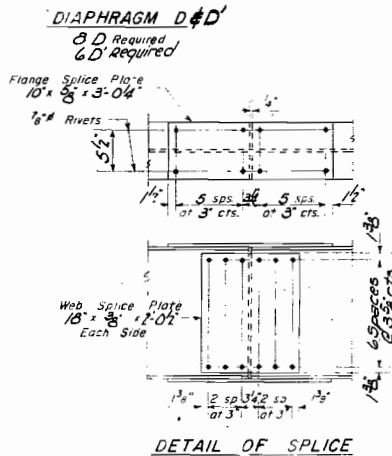
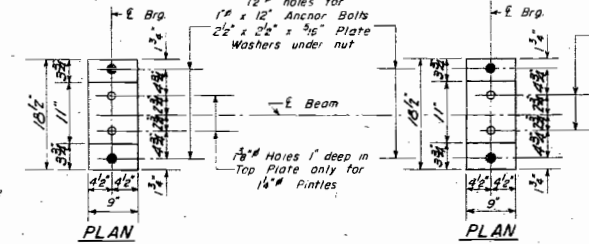
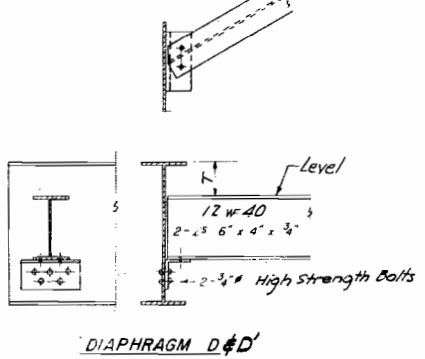
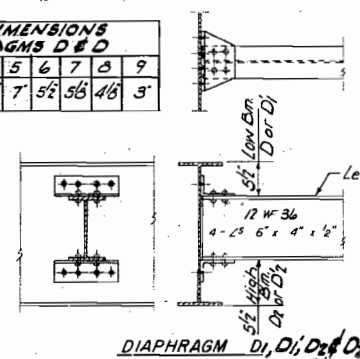
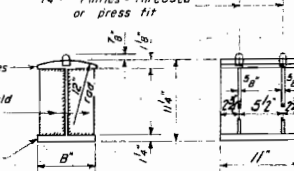


TABLE OF "T" DIMENSIONS

BEAM	T
1	0
2	0
3	0
4	0
5	7'
6	7'
7	6'
8	0
9	0



DESIGNED *W. A. Sausamon*  
CHECKED *Hugh R. Quinn*  
DRAWN *W. A. Sausamon*  
CHECKED *A.K.*

EXAMINED *W. A. Sausamon*  
PASSED *W. A. Sausamon*  
APPROVED *W. A. Sausamon*

SEPT. 14, 1957

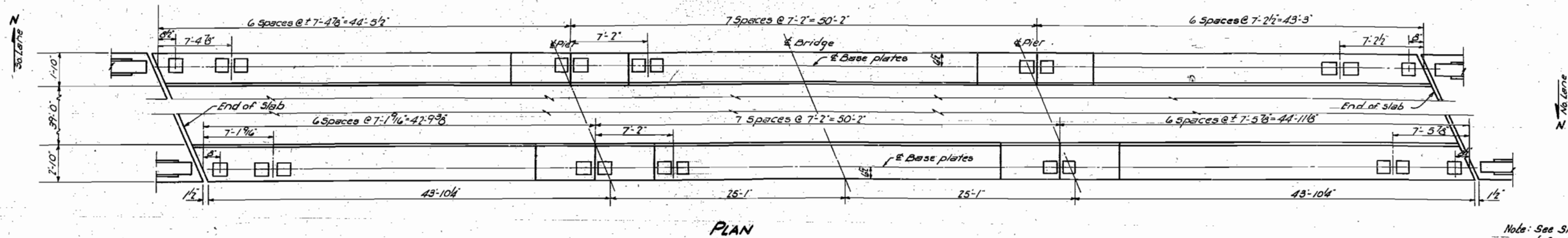
NORTH LANE  
STRUCTURAL STEEL  
COAL CREEK  
F.A.I.R.T. 80 SEC. 06 (1 B-3, 1F-3)  
BUREAU COUNTY  
STA. 102+80

I-2-R DRAWN 5-13-57  
Revised 4-21-61-WJH - In title block, changed station designation from 203+20 to 202+80.

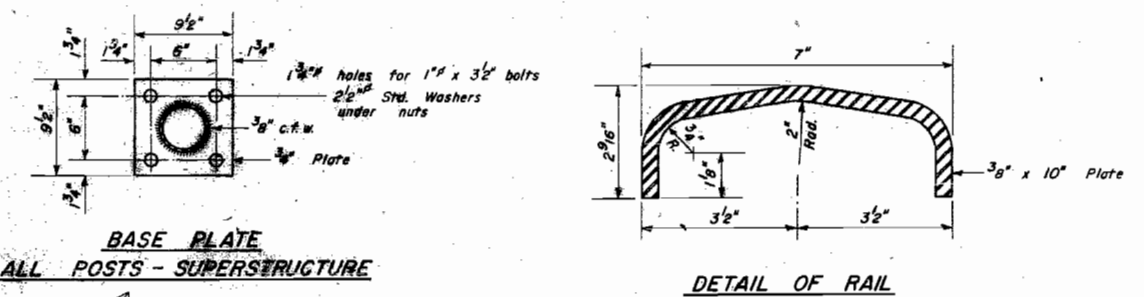
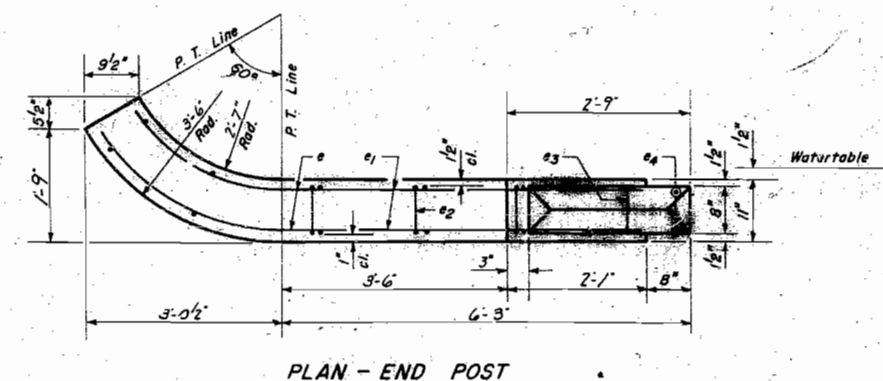
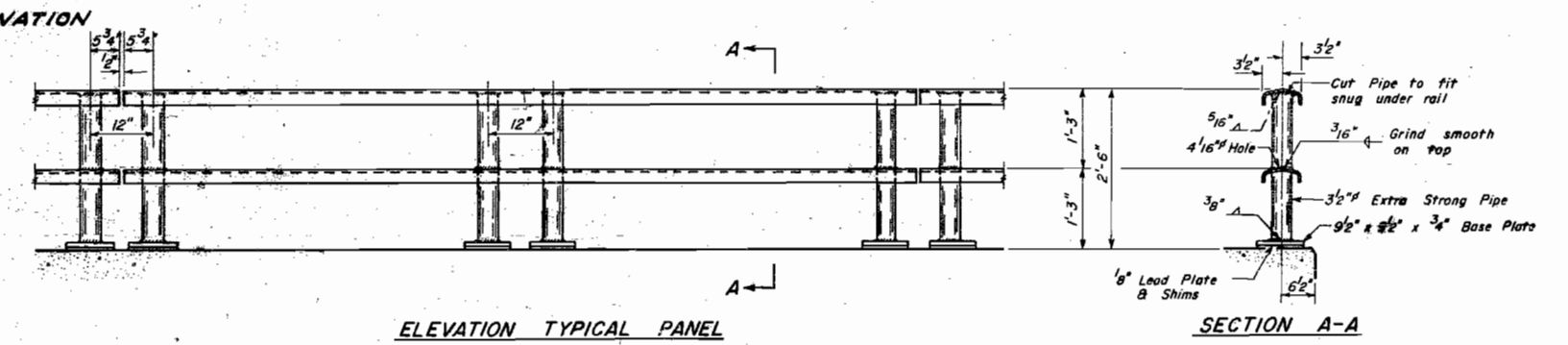
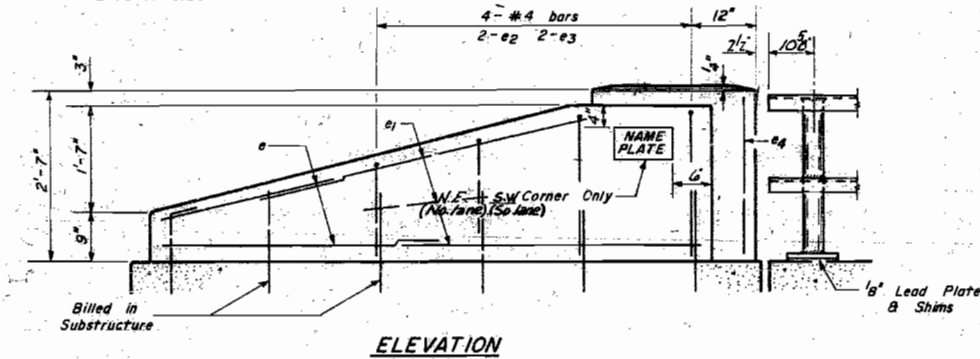
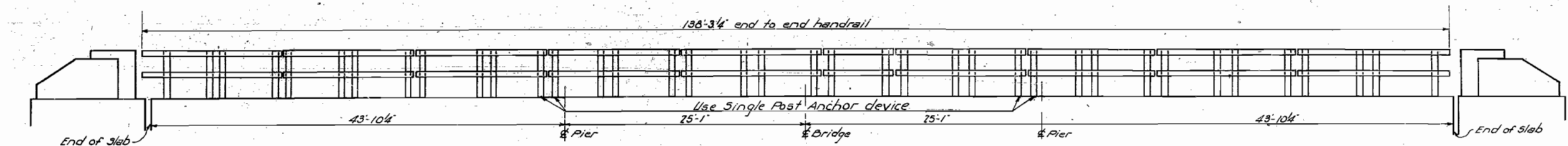


STATE OF ILLINOIS  
DEPARTMENT OF PUBLIC WORKS & BUILDINGS  
DIVISION OF HIGHWAYS

ROUTE NO.	SECTION	COUNTY	TOTAL SHEETS	SHEET NO.
66-1B-3	BUREAU	21	10	10
FED. ROAD DIST. NO. 7	ILLINOIS	FED. AID PROJECT		



Note: See Sheet No. 5A for details of Continuity Device.



BILL OF MATERIAL

Handrail Concrete	Cu. Yd.	4.6
Reinforcement Bars	Lbs.	370
Metal Handrail	Lin. Ft.	553

GENERAL NOTES

All End Posts shall be Handrail Concrete.

Provide 1-1/8" and 2-1/16" Shims for 50% of the Posts.

DESIGNED: *W. S. Souseman*

CHECKED: *W. S. Souseman*

DRAWN: *W. S. Souseman*

CHECKED: *H. K.*

EXAMINED: *M. J. ...*

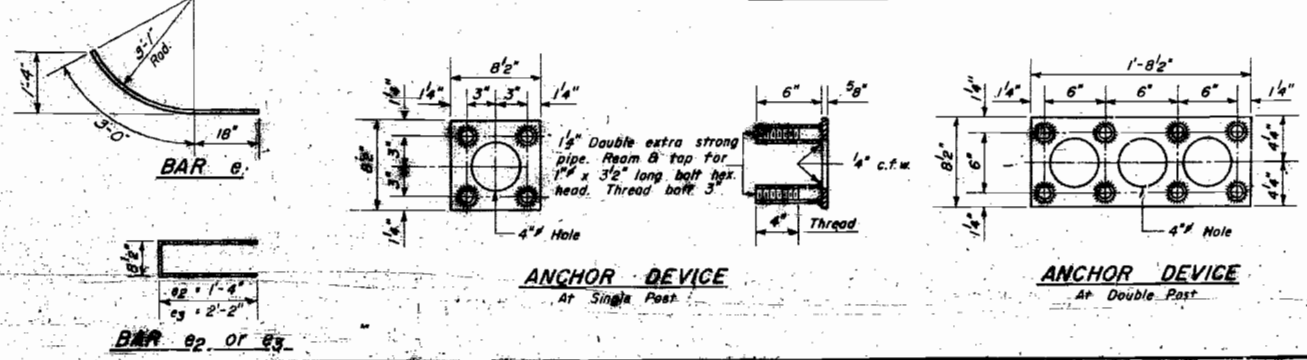
PASSED: *E. ...*

APPROVED: *R. P. ...*

SEPT. 14 1957

BILL OF REINFORCEMENT

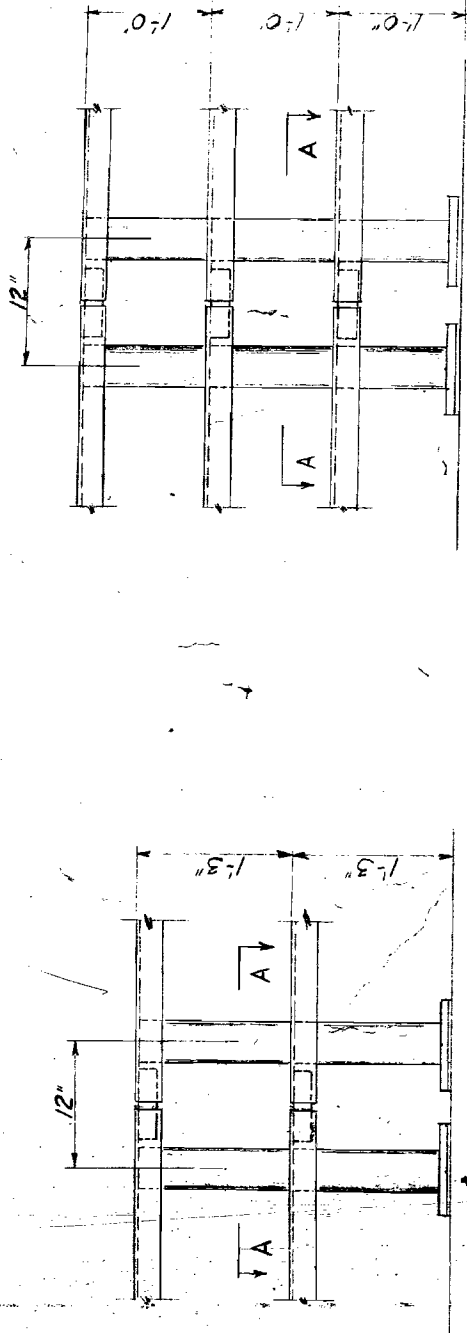
Bar	No.	Size	Length	Shape
e	32	#4	4'-6"	
e1	48	#4	5'-0"	
e2	16	#4	3'-4"	
e3	16	#4	5'-0"	
e4	16	#6	2'-3"	



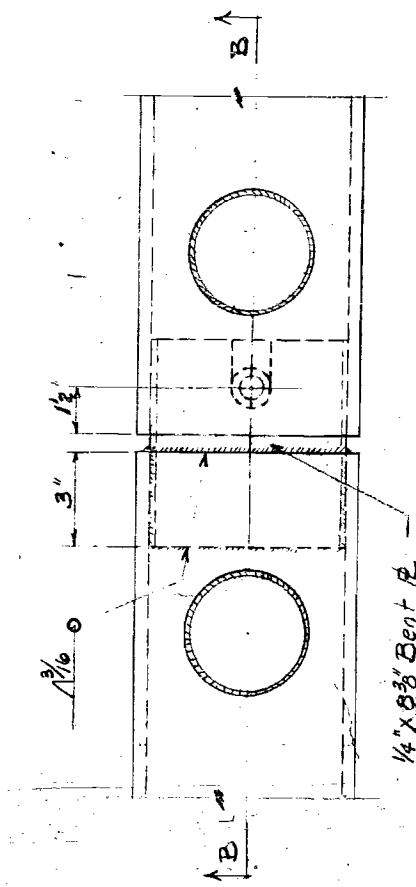
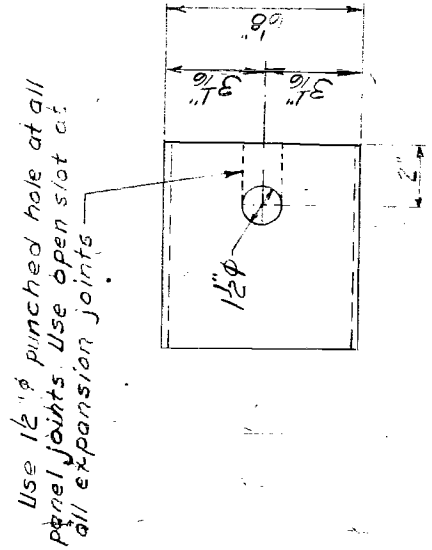
NORTH AND SOUTH LANES  
HANDRAIL  
COAL CREEK  
F.A.I.R.T. 80 SEC. 06-1B-3  
BUREAU COUNTY  
STA. 202+80

Sheet 5A  
10 Sheets

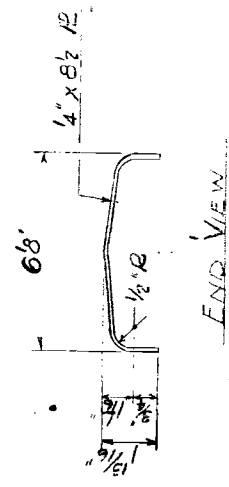
ROUTE NO.	SECTION	COUNTY	TOTAL SHEETS	SHEET NO.
EAT 8006-18-3	BUREAU	21	10A	
STA. _____ TO STA. _____ PROJECT _____				



TYPICAL ELEVATION  
@ PANEL JOINTS

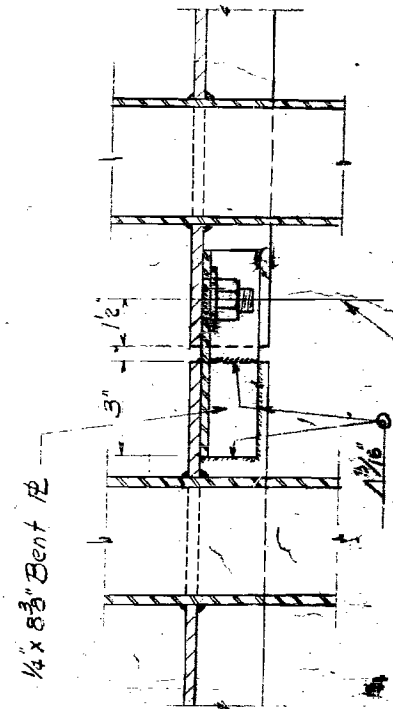


SECTION A-A'



END VIEW

DETAIL 1/4 BENT R



3/4" x 1 1/4" GRANULAR OR SOLID FLUX  
FILLED STUD - THREADED FULL  
LENGTH - AUTOMATICALLY END WELDED  
OR 3/4" x 1 1/4" FULLY THREADED STUD  
WELDED WITH 1/8" CFW. PROVIDE  
WASHER AND LOCKNUT

SECTION B-B'

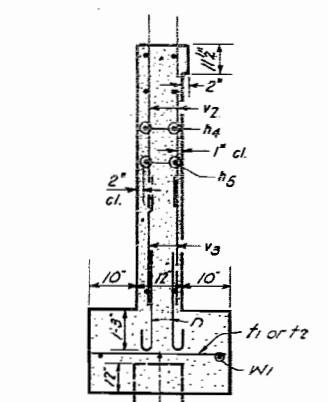
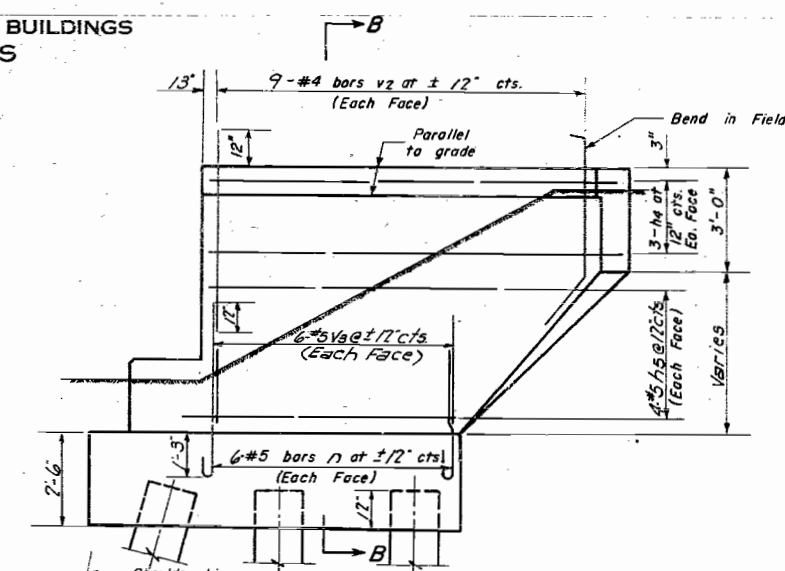
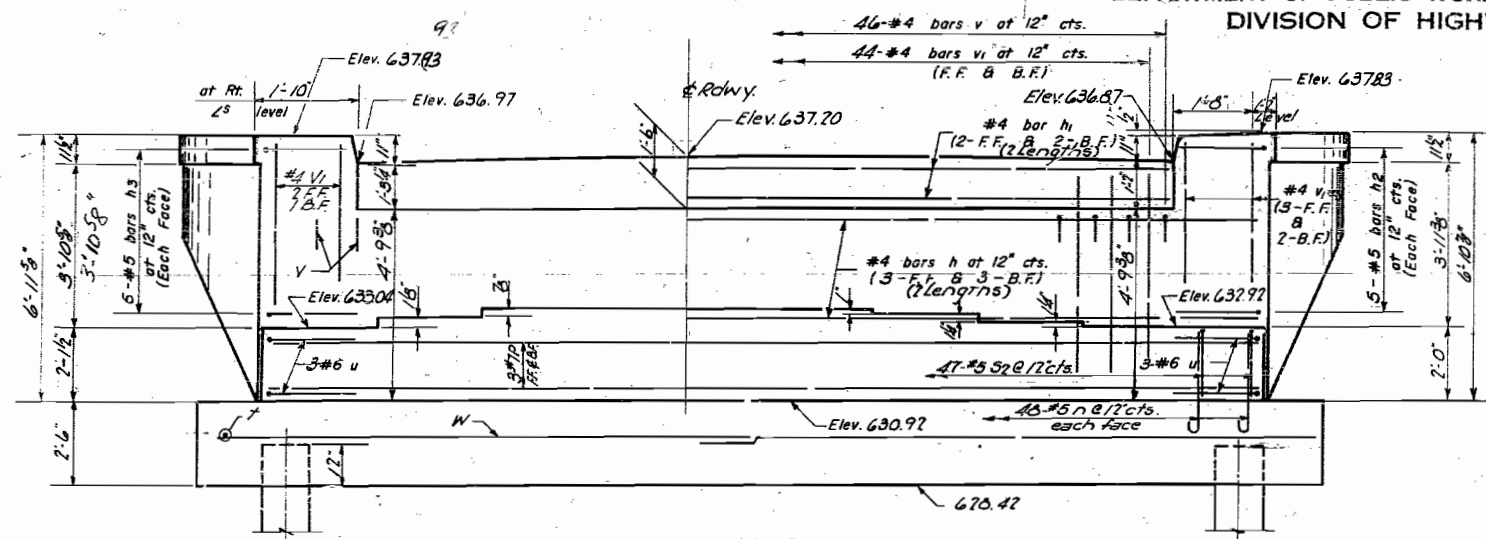
EXAMINED Nov. 10, 1959  
DESIGNED BY M. P. [Signature]  
APPROVED [Signature] CHIEF ENGINEER  
[Signature] CHIEF DESIGNER  
[Signature] CHIEF ARCHITECT

REV. 11-30-59 12-1-59

CONNECTION DETAILS  
FOR BENT PLATE  
RAIL PANELS

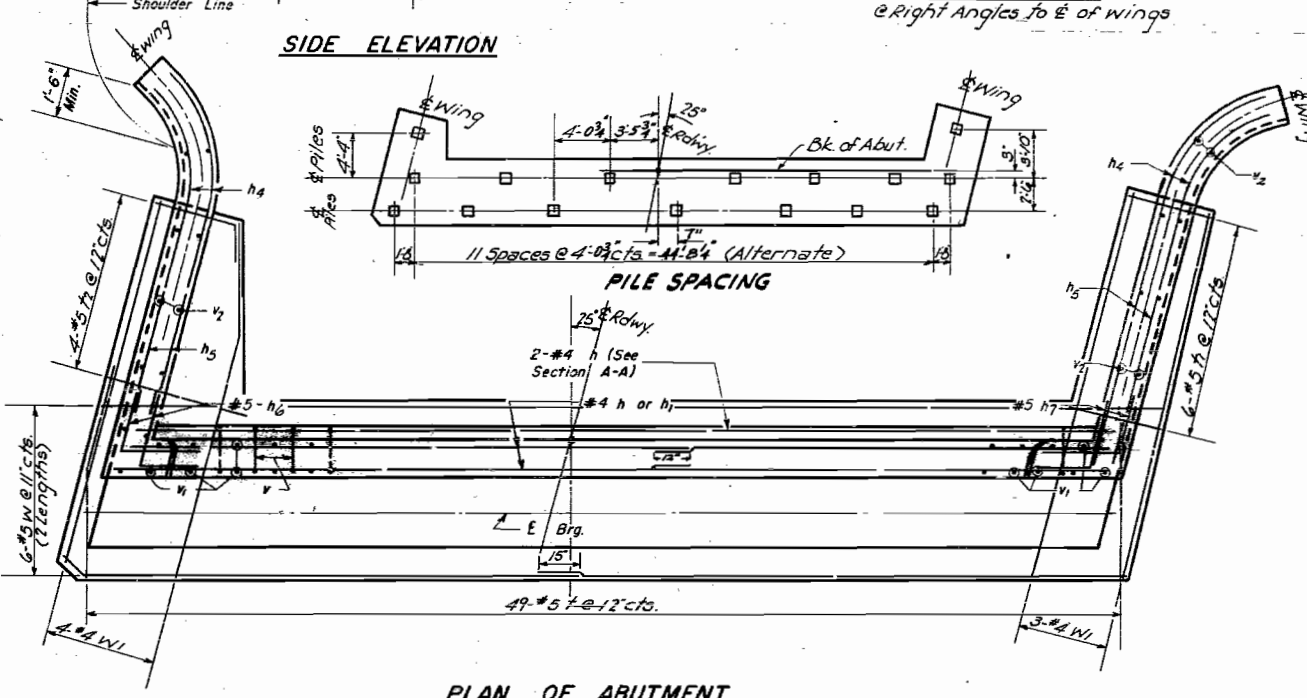
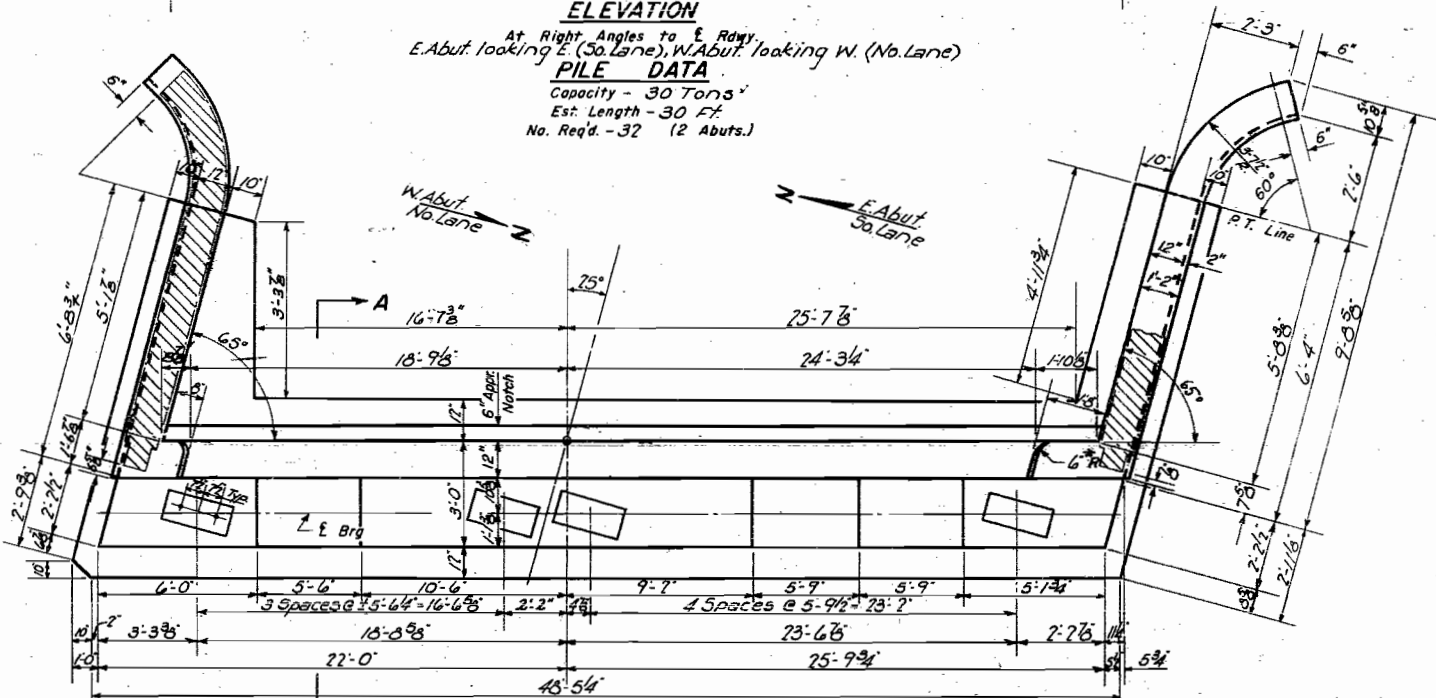
STATE OF ILLINOIS  
DEPARTMENT OF PUBLIC WORKS & BUILDINGS  
DIVISION OF HIGHWAYS

ROUTE NO.	SECTION	COUNTY	TOTAL SHEETS	SHEET NO.
66-1B-3	BUREAU	21	11	10 SHEETS
FED. ROAD DIST. NO. 7				

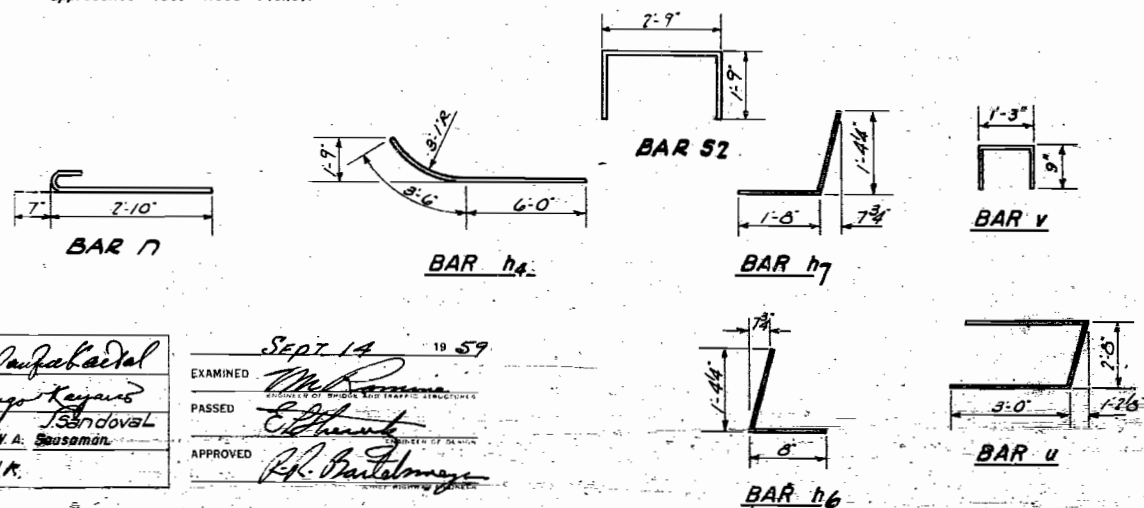


**ELEVATION**  
At Right Angles to E. Rdwy.  
E. Abut. looking E. (So. Lane), W. Abut. looking W. (No. Lane)

**PILE DATA**  
Capacity - 30 Tons  
Est. Length - 30 Ft.  
No. Req'd. - 32 (2 Abuts.)



\* Note: Contractor shall construct curb without radius when a curb & gutter are to be used on bridge approaches (See Road Plans).



**BILL OF REINFORCEMENT**

Bar	No.	Size	Length	Shape	Bar	No.	Size	Length	Shape
h	32	#4	24'-3"	—	v	98	#5	4'-9"	—
h1	16	#4	21'-10"	—	v1	12	#5	7'-5"	—
h4	24	#5	9'-6"	—	v2	8	#5	4'-0"	—
h5	32	#5	6'-0"	—	u	12	#6	8'-11"	—
h6	20	#5	7'-7"	—	v	92	#4	2'-9"	—
h7	20	#5	3'-7"	—	v1	192	#4	4'-10"	—
					v2	72	#4	4'-3"	—
					v3	48	#5	4'-6"	—
n	240	#5	3'-5"	—	w	24	#5	25'-7"	—
p	12	#7	47'-6"	—	w1	14	#4	9'-0"	—
v	94	#5	6'-3"	—					

**BILL OF MATERIAL**

Item	Unit	Quantity
Class X Concrete	Cu. Yd.	95.0
Reinforcement Bars	Lb.	6570
Concrete Piles	Lin. Ft.	960

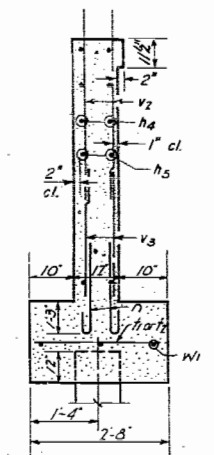
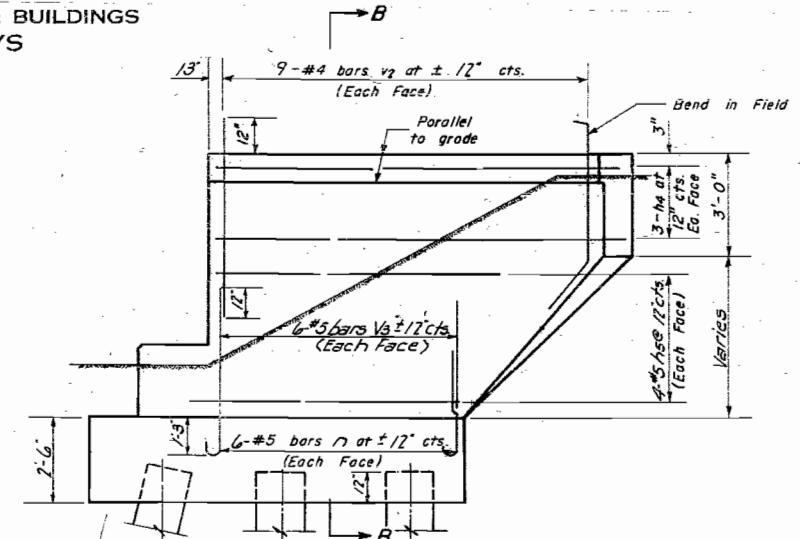
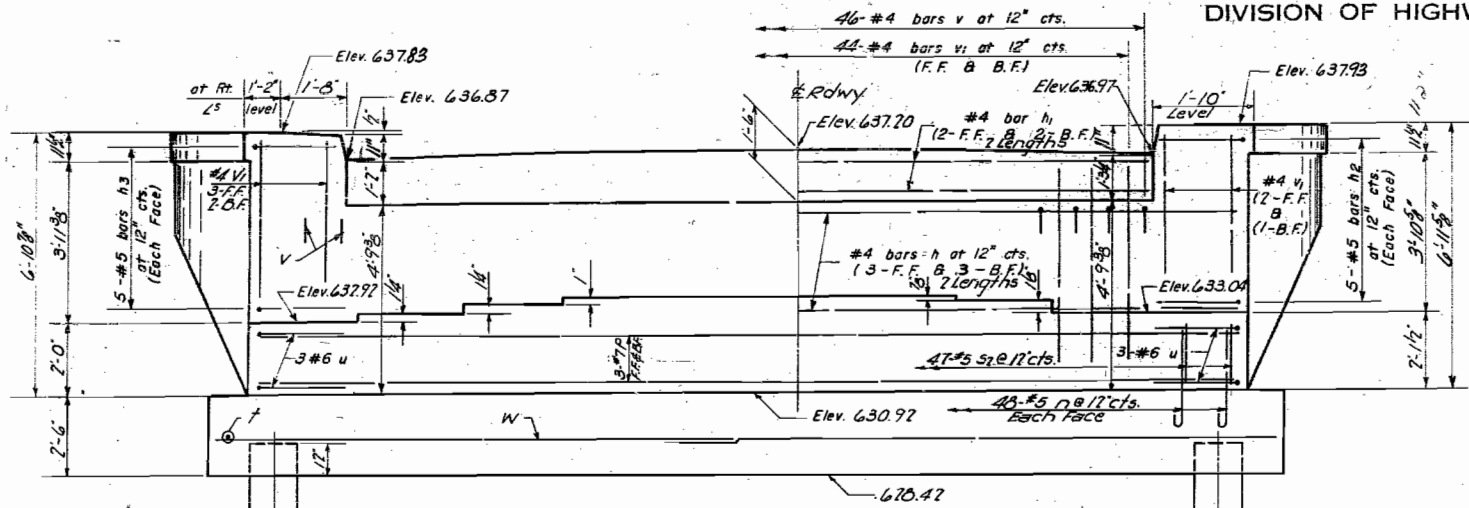
DESIGNED: *Conrad*  
CHECKED: *W. A. Sausaman*  
DRAWN: *W. A. Sausaman*  
CHECKED: *M.R.*

EXAMINED: *Sept 14 19 59*  
PASSED: *R. P. Bartelme*  
APPROVED: *R. P. Bartelme*

E. ABUT. (SO. LANE) W. ABUT. (NO. LANE)  
COAL CREEK  
F.A.I. RT. 80 SEC. 06-1 B-3  
BUREAU COUNTY  
STA. 202+80

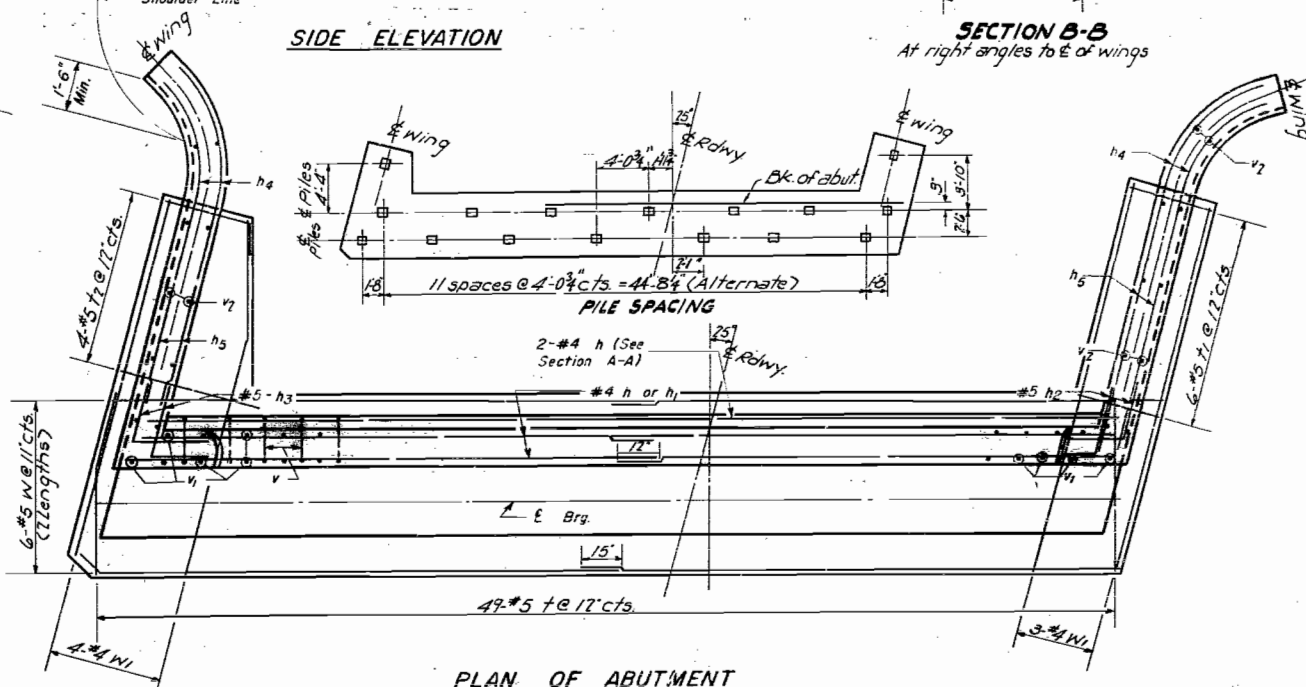
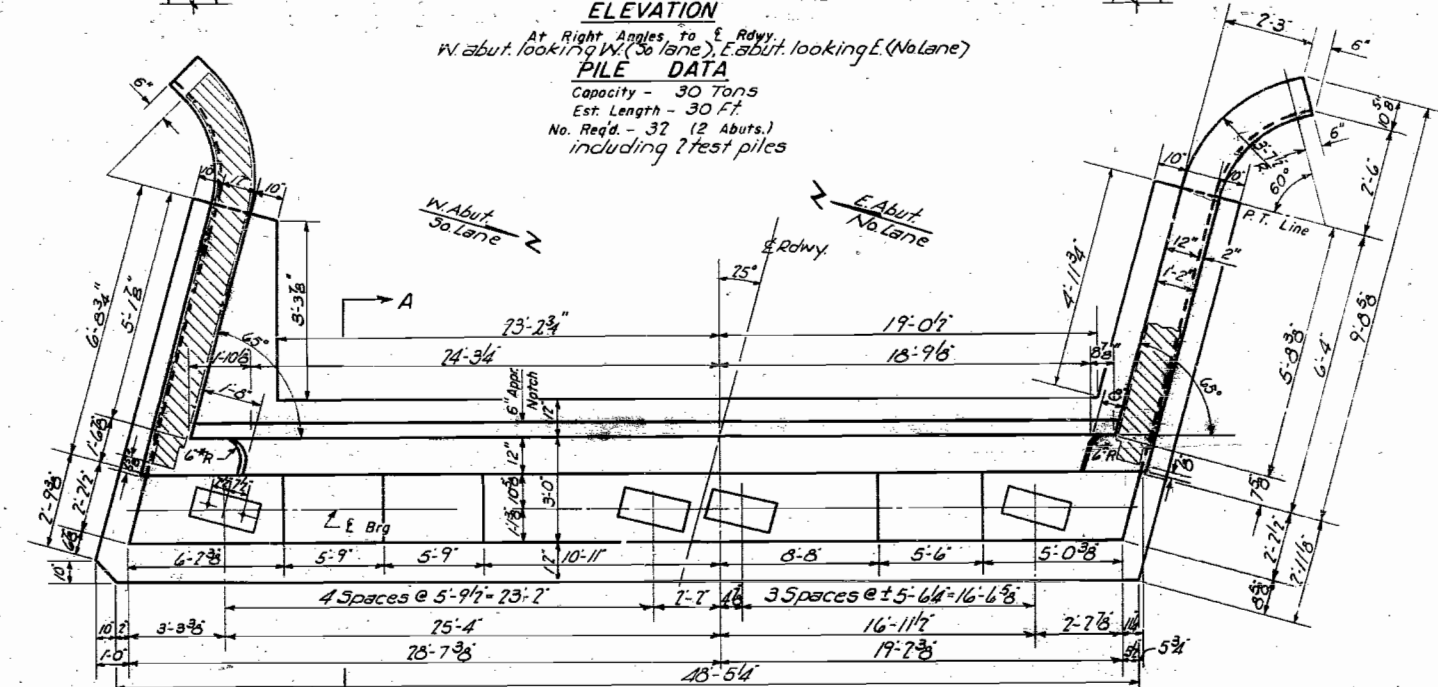
STATE OF ILLINOIS  
DEPARTMENT OF PUBLIC WORKS & BUILDINGS  
DIVISION OF HIGHWAYS

ROUTE NO.	SECTION	CITY	TOTAL SHEETS	SHEET NO.
1-1-80	06-1B3	BUREAU	21	12
SHEET NO. 7				
10 SHEETS				



**ELEVATION**  
At Right Angles to E. Rdwy.  
W. abut. looking W. (So Lane), E. abut. looking E. (No Lane)

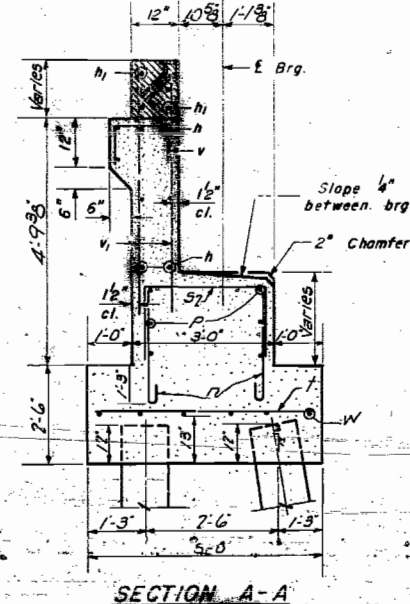
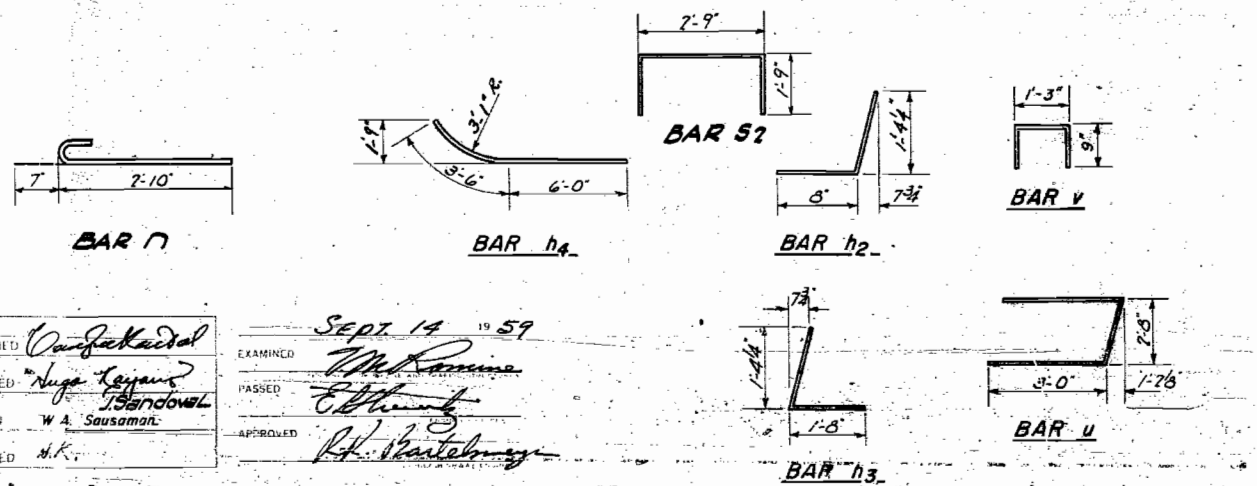
**PILE DATA**  
Capacity - 30 Tons  
Est. Length - 30 Ft.  
No. Req'd - 37 (2 Abuts.)  
including 2 test piles



\* Note: Contractor shall construct curb without radius when a curb & gutter are to be used on bridge approaches (See Road Plans).

**PLAN OF ABUTMENT**  
Dimensions

**PLAN OF ABUTMENT**  
Reinforcement



**SECTION A-A**

**BILL OF REINFORCEMENT**

Bar	No.	Size	Length	Shape	Bar	No.	Size	Length	Shape
h	32	#4	74'-3"	—	v	92	#4	2'-9"	□
h1	16	#4	71'-10"	—	v1	192	#4	4'-10"	—
h2	20	#5	2'-2"	J	v2	72	#4	4'-3"	—
h3	20	#5	3'-7"	L	v3	40	#5	4'-6"	—
h4	24	#5	9'-6"	—	w	24	#5	75'-2"	—
h5	32	#5	6'-0"	—	w1	14	#4	9'-0"	—
n	240	#5	3'-5"	—					
p	12	#7	47'-6"	—					
s2	94	#5	6'-3"	—					

**BILL OF MATERIAL**

Item	Unit	Quantity
Class X Concrete	Cu. Yd.	95.0
Reinforcement Bars	Lb.	6570
Concrete Piles	Lin. Ft.	900
Test Piles (Concrete)	Ea.	2

DESIGNED: *W. A. Sausaman*  
CHECKED: *W. A. Sausaman*  
DRAWN: *W. A. Sausaman*  
CHECKED: *H.K.*

EXAMINED: *Sept 14 1959*  
PASSED: *Edmund*  
APPROVED: *R. H. Karlsberg*

W. ABUT. (SO LANE) & E. ABUT. (NO LANE)  
COAL CREEK  
F.A.I.R.T. 80 SEC. 06-1B-3  
BUREAU COUNTY  
STA. 102+80

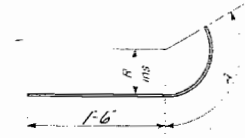
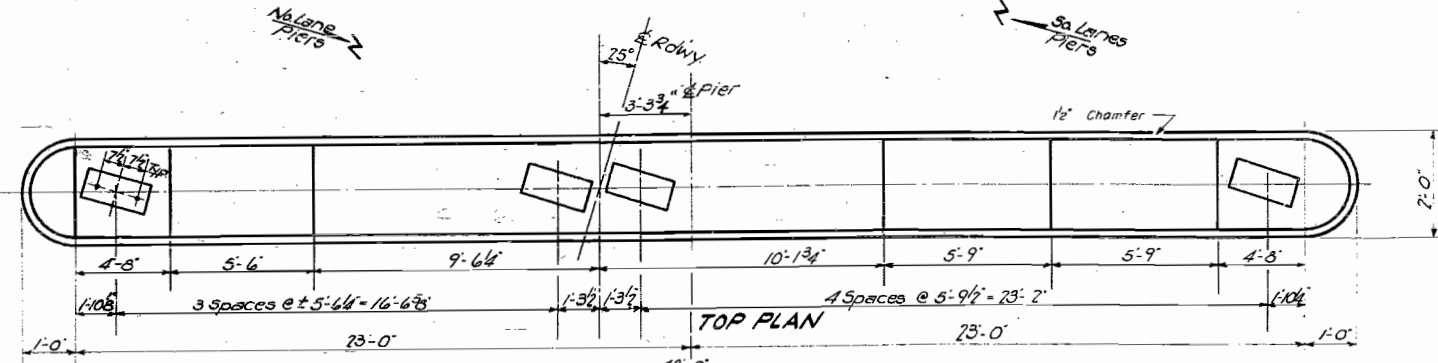


STATE OF ILLINOIS  
DEPARTMENT OF PUBLIC WORKS & BUILDINGS  
DIVISION OF HIGHWAYS

ROUTE NO.	SECTION	COUNTY	TOTAL SHEETS	SHEET NO.	SHEET NO. OF SHEETS
F.A.I. 80	06-18-3	BUREAU	21	13	10
FED. ROAD DIST. NO. 1	STAGES	FED. AID PROJECT			

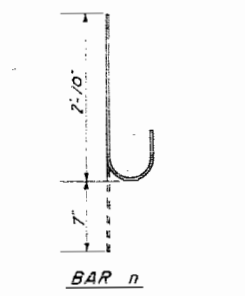
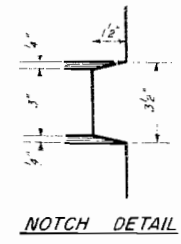
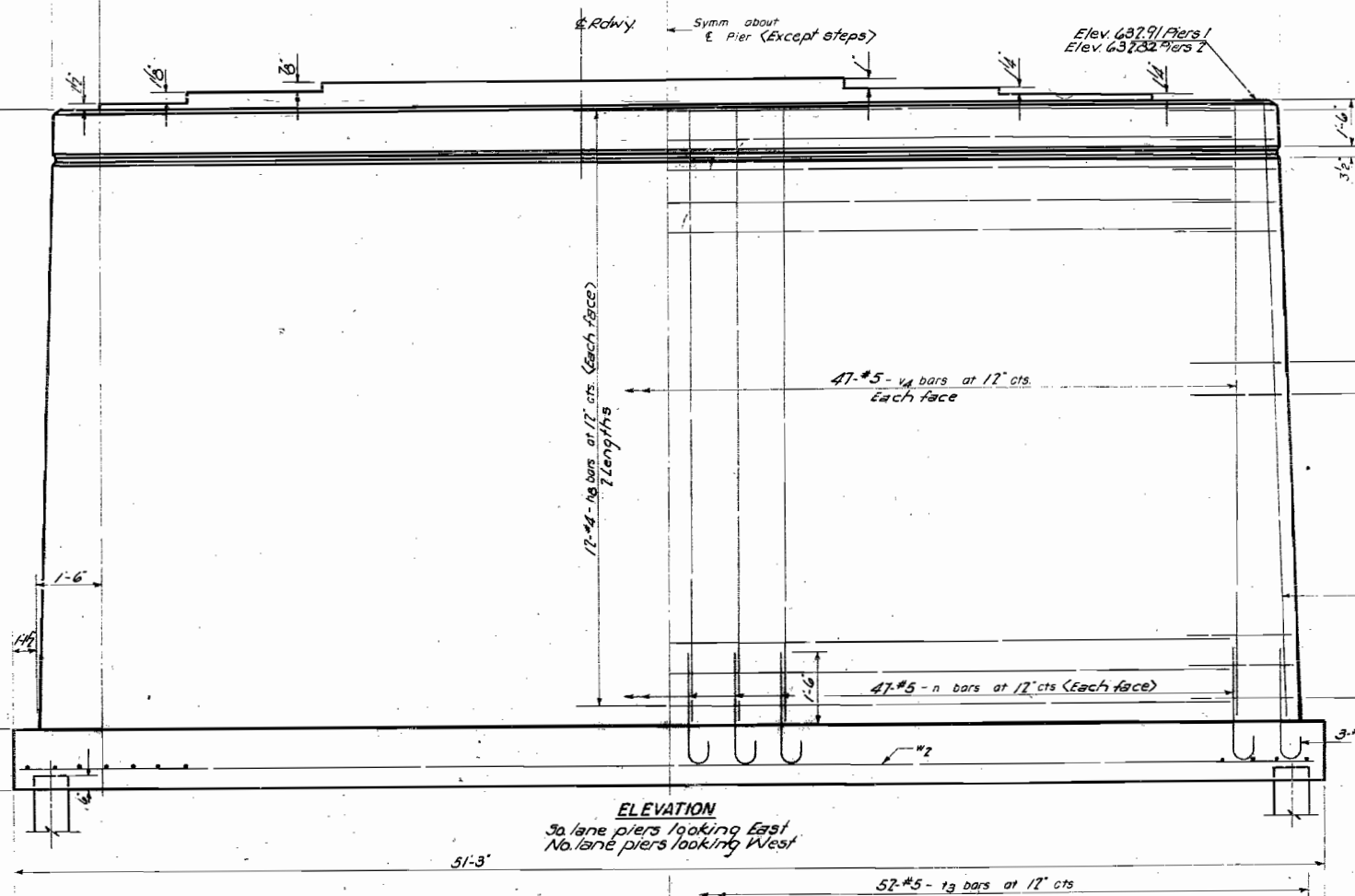
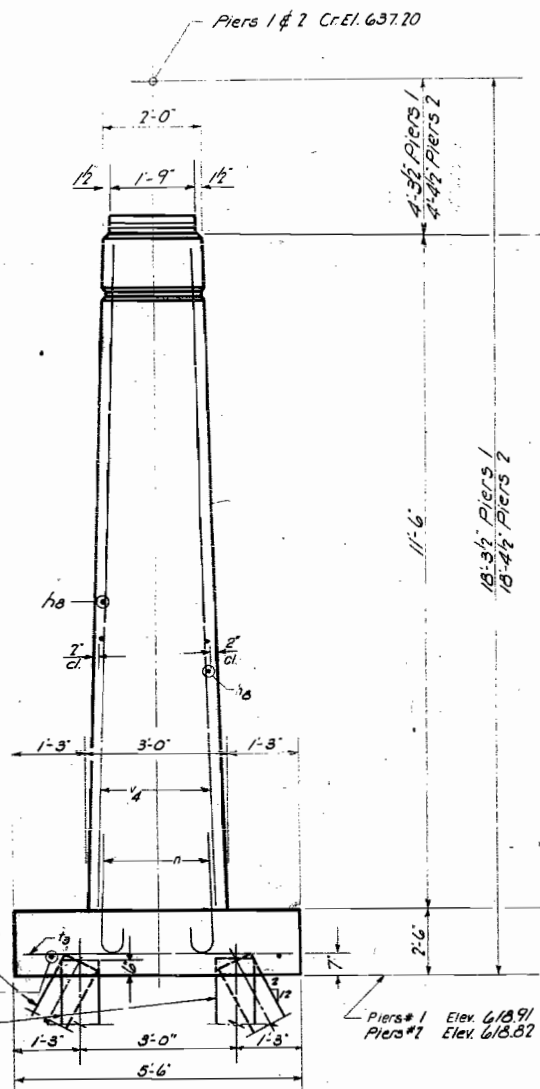
**PILE DATA**

TYPE: Untreated Timber Piles  
Capacity: 20 Tons  
Est. Length: 20  
No. Req'd: 112 (4 piers including 2 test piles)



DETAIL OF BARS

Bar	R	A
h8	96	7'-4"
h10	1'-1"	7'-9"



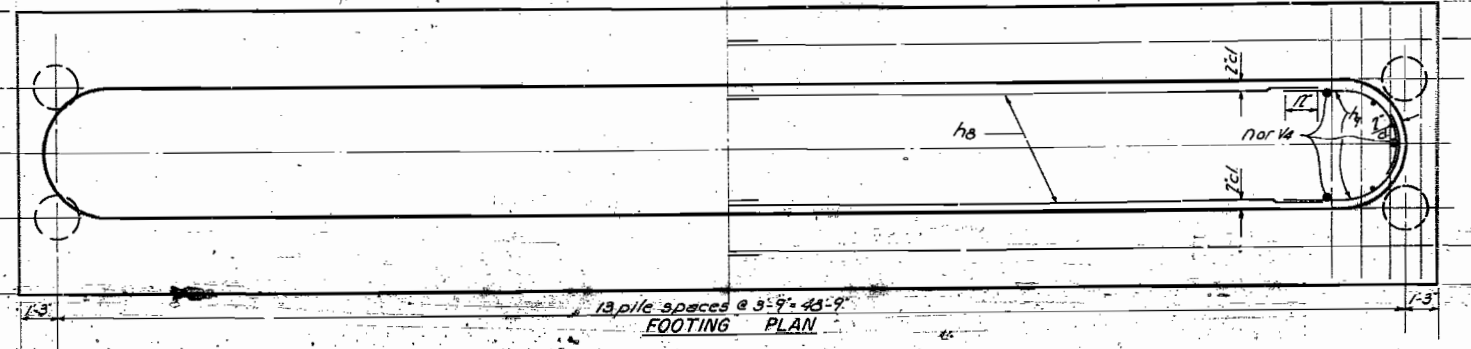
PIERS 1 & 2 NO. 5 LANES  
BILL OF MATERIAL

Bar	No.	Size	Length	Shape
h8	192	#4	23'-6"	—
h9	96	#4	3'-10"	—
h10	96	#4	4'-3"	—
n	400	#5	3'-5"	C
r3	208	#5	5'-2"	—
r4	400	#5	11'-3"	—
r7	24	#5	26'-1"	—
Class A Concrete		Cu. Yd.	311.3	
Reinforcement Bars		Lb.	16,420	
Untreated Timber Piles		Lin. Ft.	2,200	
Test Piles (Timber)		Each	2	

DESIGNED: *Confer*  
CHECKED: *Hugo*  
DRAWN: *V. A. Sausman*  
CHECKED: *J. K.*

EXAMINED: *M. R. ...*  
PASSED: *...*  
APPROVED: *R. K. ...*

SEPT. 14 19 59



PIERS 1 & 2  
NO. AND SO. LANES  
COAL CREEK  
F.A.I. RT. 80 SEC. 06-1 B-3  
BUREAU COUNTY  
STA. 202+80

P-1 DRAWN 57  
Revised 4-21-61 WJM - In title block, changed station designation from 203+20 to 202+80.