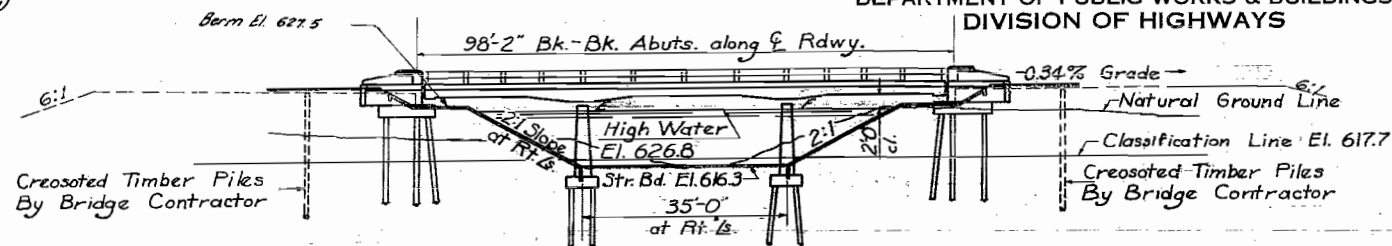


B.M. Top of Steel Pin on East Bank of King Creek, 94.4' R.L. Sta. 56+00
 Elev. 627.74 (U.S. G.S. Datum)

STATE OF ILLINOIS
 DEPARTMENT OF PUBLIC WORKS & BUILDINGS
 DIVISION OF HIGHWAYS

ROUTE NO.	SECTION	COUNTY	TOTAL SHEETS	SHEET NO.
F.A.I.R.T. 80	06-1B	BUREAU	17	3
F.A. PROJ. I-80-1(37)37				

SHEET NO. 1
 9 SHEETS



Embankment 2,390 Cu. Yds.
 Borrow Excavation 2,910 Cu. Yds.

ELEVATION
 Scale: 1/8" = 1'-0"

Embankment = 470 Cu. Yds.
 Borrow Excavation = 590 Cu. Yds.

APPROACH PILES

15 Ton Creosoted Piles
 Est. Length ----- 20 Ft.
 No. Req'd ----- 24

GENERAL NOTES

Class "X" Concrete shall be used throughout except in End Posts & Piers. Class "A" Concrete shall be used in Piers. Handrail Concrete shall be used in End Posts.

The concrete floor slab shall be finished in accordance with Article 51.19 of the Standard Specifications.

Slope wall shall be reinforced with welded wire fabric 6x6 mesh, #4 wires, weighing 58 lbs. per 100 sq. ft. Layout of slope walls may be varied to suit ground conditions, as directed by the Engineer.

All rollers, bearing plates, lead plates, and anchor bolts shall be fabricated and set in accordance with Article 51.15 of the Standard Specifications, and are included in quantity of Structural Steel. Est. Weight = 16,705 Lbs.

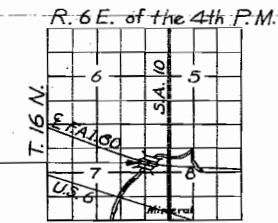
All surfaces of expansion guard inaccessible after erection shall be given two shop coats of red lead paint; the anchor studs shall not be painted.

Expansion guards shall be fabricated and erected in accordance with Article 51.13(d) of the Standard Specifications and are included in quantity of Structural Steel. Est. Weight = 4,370 Lbs.

Except as otherwise provided, all structural steel shall receive one shop coat of red lead paint and two field coats of aluminum paint. See Articles 56.1 to 56.5 inclusive of the Standard Specifications.

All paint shall be furnished and applied by the contractor. The contractor shall drive one concrete test pile in the N.E. Abutment and the S.W. Abutment and one timber test pile in Pier 1, North Lane and Pier 2, South Lane in permanent locations before ordering remaining piles.

Wherever in these plans reference is made to the "Standard Specifications", it is understood to include the "Supplemental Specifications", effective April 2, 1962.



LOCATION SKETCH

WATERWAY INFORMATION

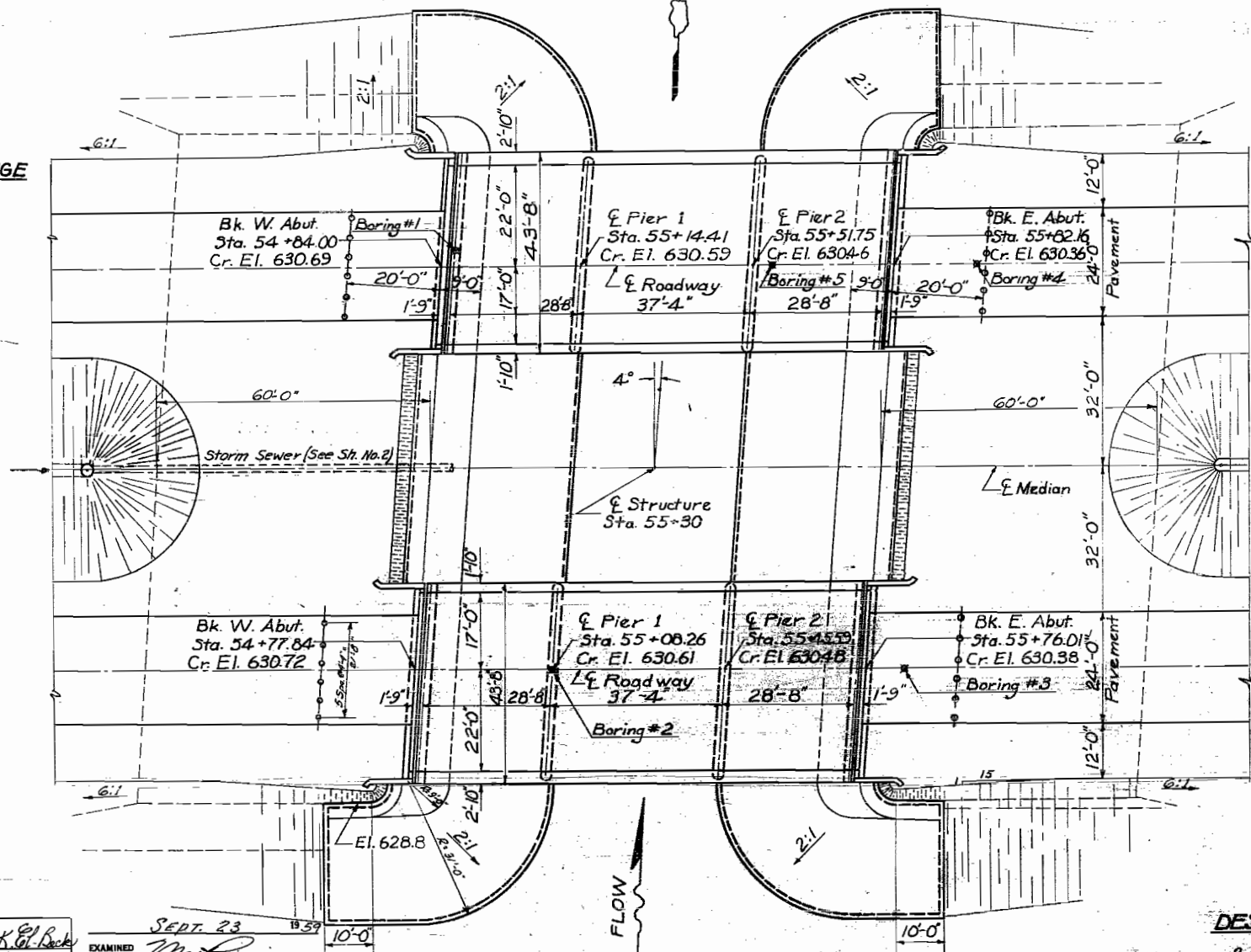
Drainage Area 12,400 Acres
 Character Rolling, hilly, clay & cult.
 Required Opening (50 yr. flood) 560 Sq. Ft.

Proposed Opening 550 Sq. Ft.
 Ordinary Water Elev. 617.3
 Low Water Elev. 616.7

TOTAL BILL OF MATERIAL

ITEM	UNITS	SUPER	SUB	TOTAL
Class X Concrete	Cu. Yds.	452.8 ✓	106.2 ✓	559.0 ✓
Class A Concrete	Cu. Yds.		307.0 ✓	307.0 ✓
Handrail Concrete	Cu. Yds.	4.6 ✓		4.6 ✓
Reinforcement Bars	Lbs.	116,990 ✓	17,420 ✓	134,410 ✓
Structural Steel	Lbs.		21,075 ✓	21,075 ✓
Metal Handrail	Lin. Ft.	384 ✓		384 ✓
Protective Coat	Sq. Yd.	992		992
Borrow Excavation	Cu. Yds.		3,200 ✓	3,200 ✓
Channel Excavation	Cu. Yds.		3,291 ✓	3,291 ✓
Class A Excavation for Structure	Cu. Yds.		75 ✓	75 ✓
Class B Excavation for Structure	Cu. Yds.		453 ✓	453 ✓
Concrete Piles	Lin. Ft.		850 ✓	850 ✓
Untreated Piles	Lin. Ft.		1032 ✓	1032 ✓
Creosoted Piles	Lin. Ft.		480 ✓	480 ✓
Test Pile Concrete	Each		2 ✓	2 ✓
Test Pile Timber	Each		2 ✓	2 ✓
Slope Wall	Sq. Yds.		1830	1830
Name Plates	Each	2		2

CHANNEL CHANGE



STATION 55+30
 BUILT 196 BY
 STATE OF ILLINOIS
 F.A.I.R.T. 80 SEC. 06-1B
 F.A. PROJ. I-80-1(37)
 LOADING H20-3-16 & ALT.

NAME PLATE
 See Std. 2113

DESIGN STRESSES

f_c = 14,000 psi. Super & Sub
 f_c = 7,500 psi. Footings
 f_s = 20,000 psi. Reinf.
 f_s = 18,000 psi. Struct.
 n = 10
 LOADING H20-316-4.4 & Alternate

**GENERAL PLAN & ELEVATION
 KING CREEK
 PROJ. I-80-1(37)37
 F.A.I.R.T. 80 SEC. 06-1B
 BUREAU COUNTY
 STA. 55+30**

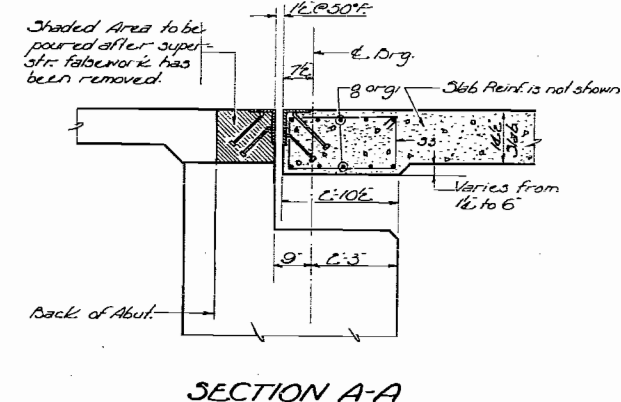
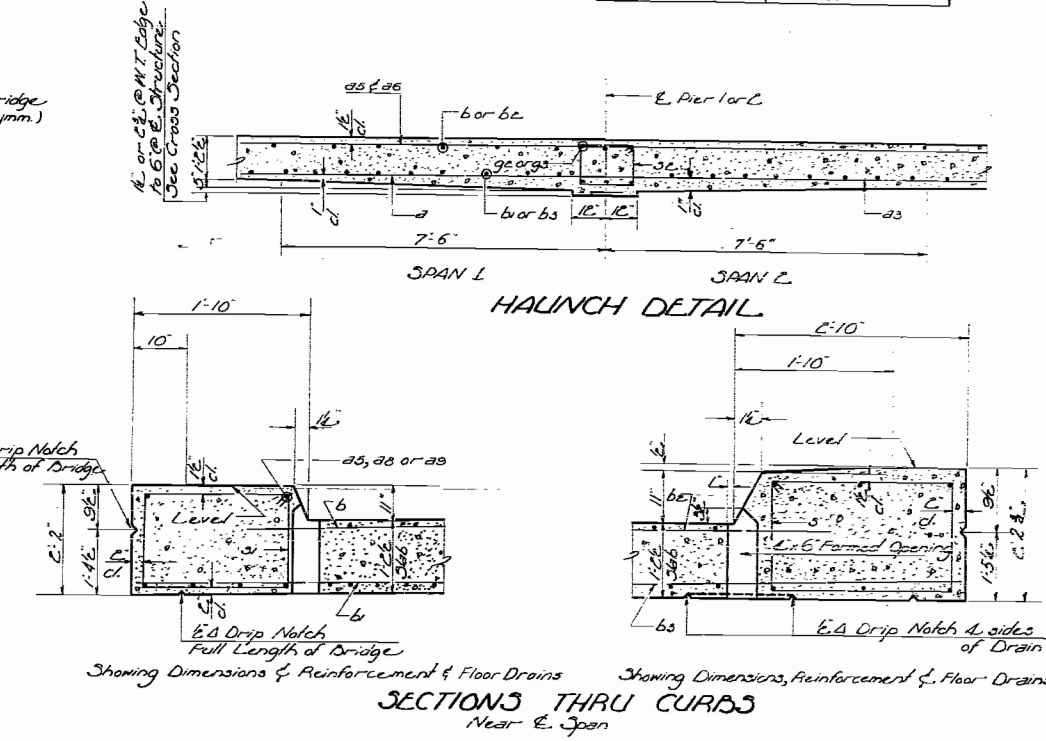
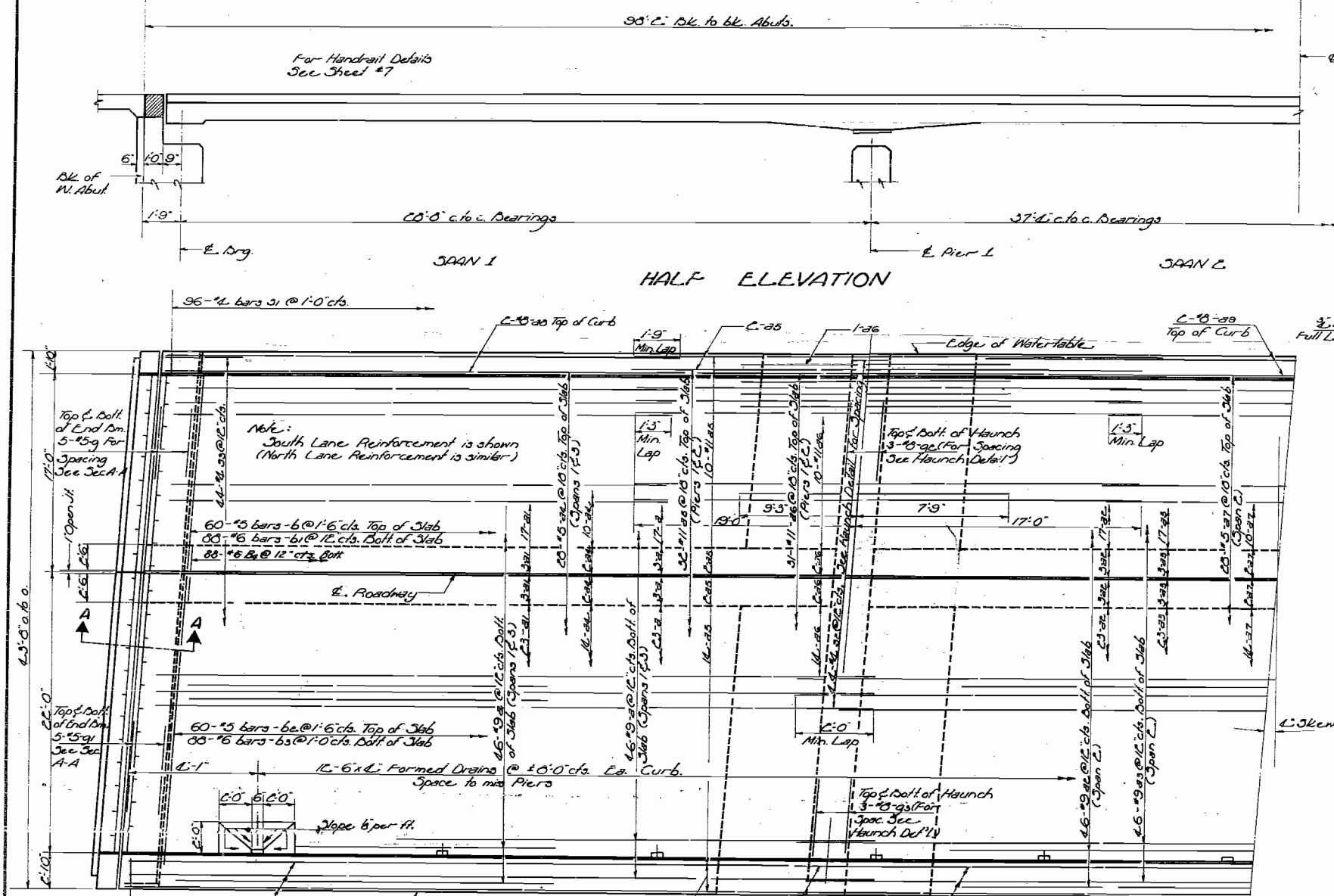
DESIGNED Abraham K. El. Beck
 CHECKED E. H. Hunt Jr.
 DRAWN A.K.B. & M. Hunt Jr.
 CHECKED E. H. Hunt Jr.
 EXAMINED [Signature]
 PASSED [Signature]
 APPROVED R.P. [Signature]

Rev. 12-30-60 Quantity of Class X Conc. A.K.B.
 Rev. 6-22-61 Changed quantity of Channel Exc. to Bill of Material from 912 Cu. Yds. to 3,291 Cu. Yds.
 & quantity of untreated Timber Piles changed from 1032 to 1032 A.K.B.
 Revised 10/18/61 In ELEVATION & PLAN Embankments according to the new policy.
 In TOTAL BILL OF MATERIAL quantity of Borrow Exc. changed from 2,760 Cu. Yds. to 3,200 Cu. Yds.
 In ELEVATION quantities of Embankment & Borrow Exc. changed from 2141 Embankment
 2,390 Cu. Yds. to 470 Cu. Yds. & 2,910 Cu. Yds. to 590 Cu. Yds.
 Total Borrow Exc. 2,760 Cu. Yds. to 3,200 Cu. Yds. &
 East Abut. 390 Cu. Yds. R. 22/L.A.D.

STATE OF ILLINOIS
DEPARTMENT OF PUBLIC WORKS & BUILDINGS
DIVISION OF HIGHWAYS

ROUTE NO.	SECTION	COUNTY	TOTAL SHEETS	SHEET NO.
F.A.I. 80	06-18	BUREAU	17	4
FBI ROAD DIST. NO. 7		ILLINOIS	FEL. AC. PROJECT	

SHEET NO. 4
9 SHEETS

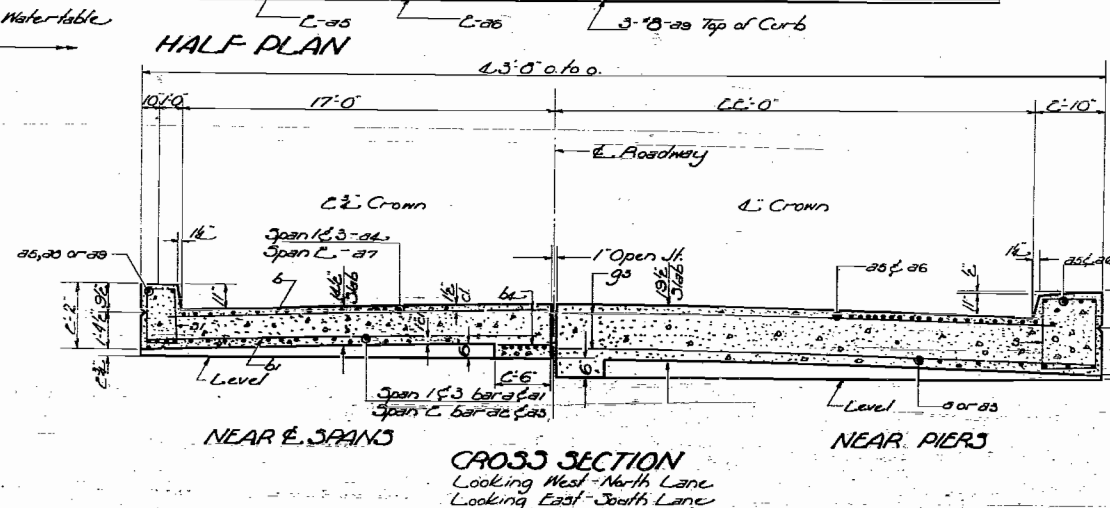


NORTH & SOUTH LANES
BILL OF MATERIAL

Bar	No.	Size	Length	Shape
a	104	19	31'6"	C
a1	104	19	21'6"	
a2	92	19	23'6"	
a3	92	19	39'6"	
a4	112	15	10'3"	
a5	120	11	36'0"	
a6	124	11	17'0"	
a7	36	15	6'0"	
a8	20	18	10'9"	
a9	10	18	7'0"	
b	120	15	17'9"	
b1	176	15	17'3"	
b2	120	15	22'9"	
b3	176	15	23'3"	
b4	332	16	2'3"	
g	40	15	18'6"	
g1	40	15	21'6"	
g2	24	18	18'6"	
g3	24	18	22'6"	
s	132	12	9'3"	
z	132	12	7'3"	
z1	176	12	6'9"	
z2	176	12	8'3"	
Class X Concrete		Cu. Yds.	452.8	
Reinforcement Bars		Lbs.	116,620	

D.L. DEFLECTION DIAGRAM
In addition to the Deflection the Contractor shall allow for settlement of forms and shrinkage of concrete.

DESIGNED	Abraham K. Beck	EXAMINED	SEPT. 23 1959
CHECKED	E. J. Hunt jr.	PASSED	[Signature]
DRAWN	A. K. B. L. Brown	APPROVED	[Signature]
CHECKED	E. J. Hunt jr.		

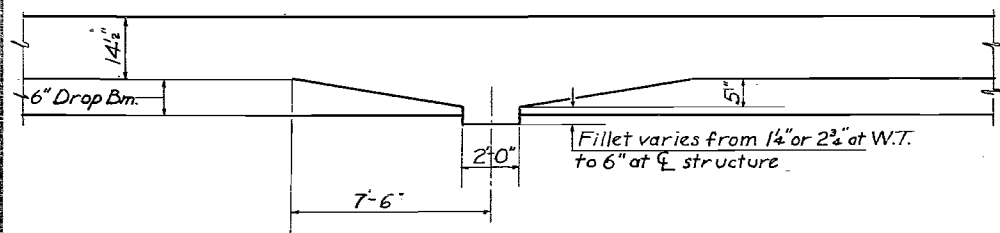


Rev. 12-30-60 Raised Curb 9' to 11" A.K.B.

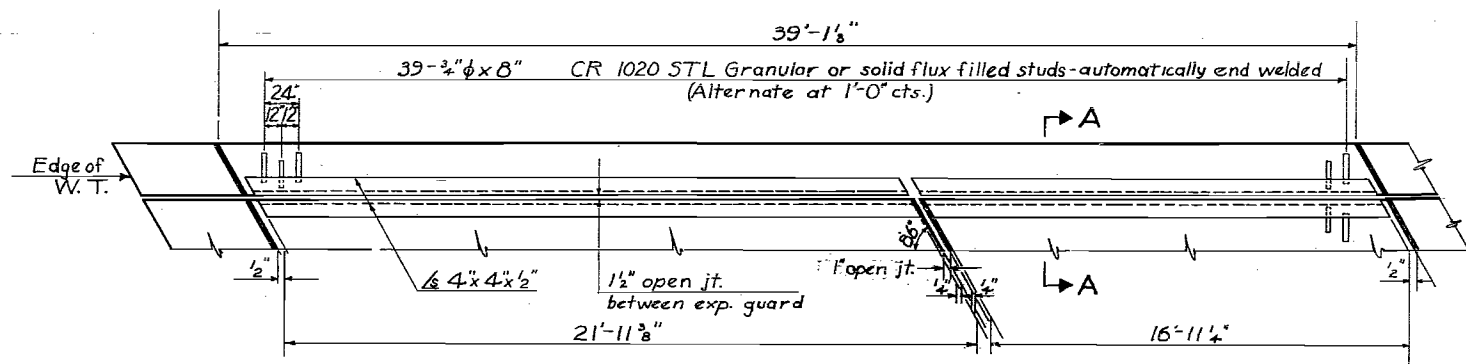
SUPERSTRUCTURE
NORTH & SOUTH LANES
F.A.I. R. 80 - SEC 06-18
BUREAU COUNTY
STA. 55+30

STATE OF ILLINOIS
DEPARTMENT OF PUBLIC WORKS & BUILDINGS
DIVISION OF HIGHWAYS

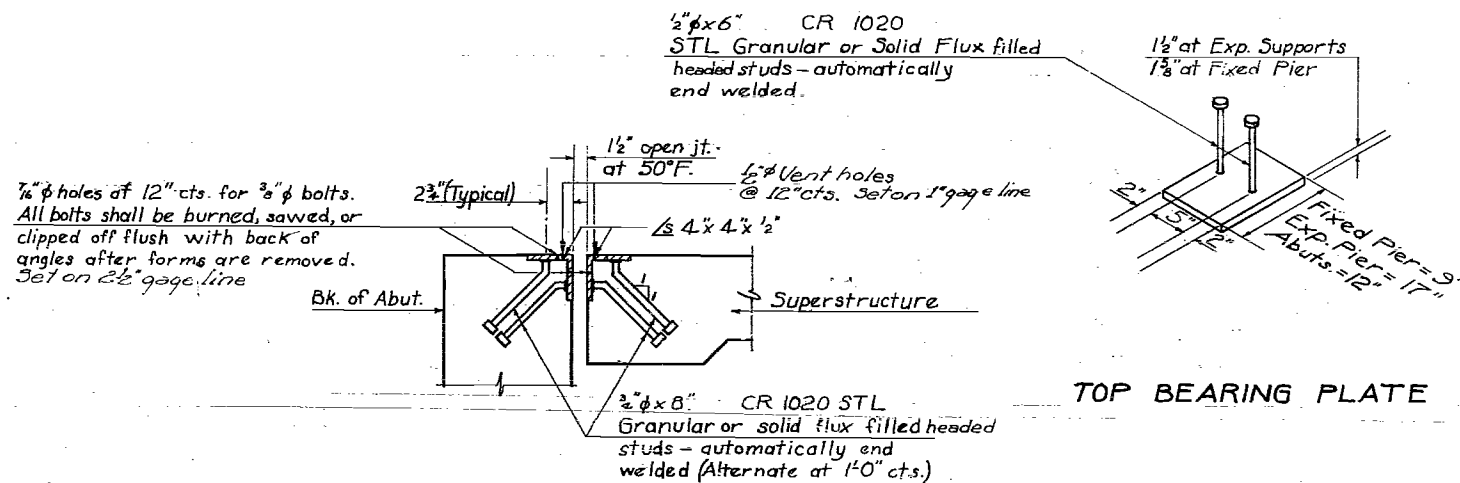
ROUTE NO.	SECTION	COUNTY	TOTAL SHEETS	SHEET NO.	SHEET NO. 3
F.A.I. RT. 80	06-1B	BUREAU	17	5	9 SHEETS
FED. ROAD DIST. NO. 7	ILLINOIS	FED. AID PROJECT			



HAUNCH CROSS SECTION

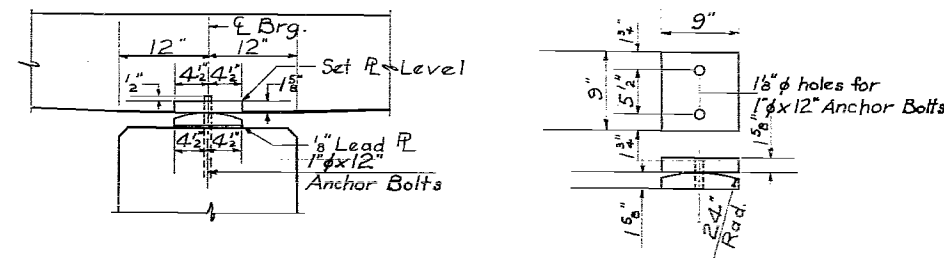


PLAN OF EXPANSION GUARD

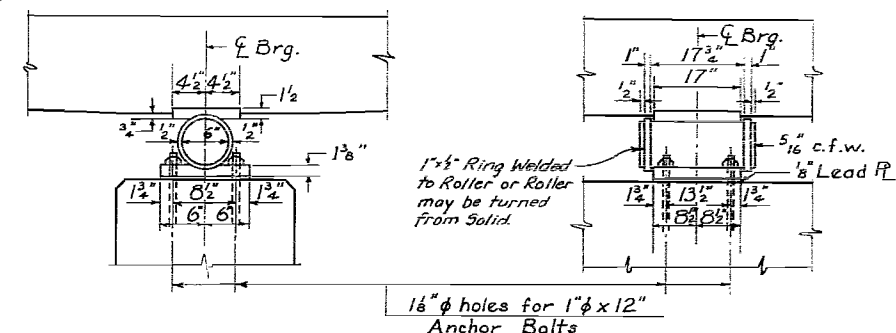


EXPANSION DETAIL
WELDED STUDS

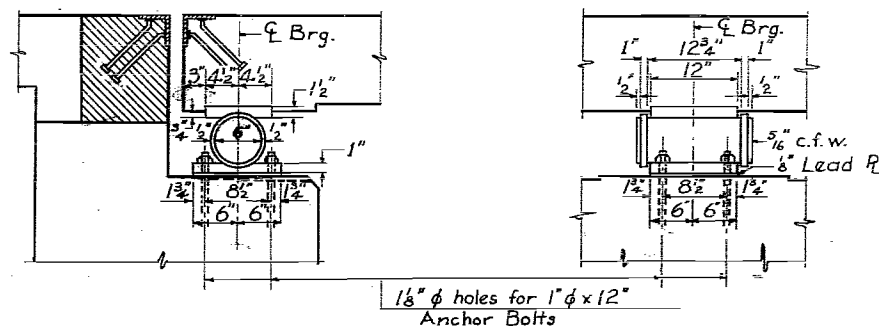
SEC. A-A



FIXED BEARING - PIER 2
No. Req'd = 18



EXPANSION BEARING - PIER 1
No. Req'd = 18



EXPANSION BEARING - ABUTMENT
No. Req'd = 36

Struct. Steel	lbs	21,075
---------------	-----	--------

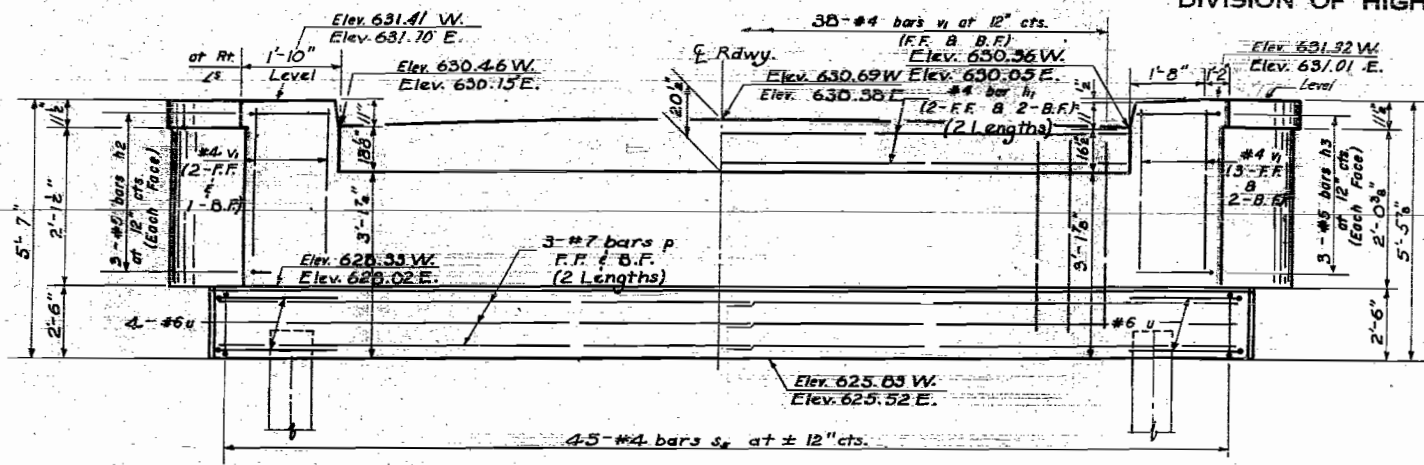
DESIGNED	Abraham K. Colbeck	EXAMINED	Sept 23 1959
CHECKED	E. S. Hunt Jr.	PASSED	
DRAWN	E. S. Hunt Jr.	APPROVED	
CHECKED	E. S. Hunt Jr.		

BEARING DETAIL
KING CREEK
F.A.I. RT. 80 SEC. 06-1B
BUREAU COUNTY
STA. 55+30

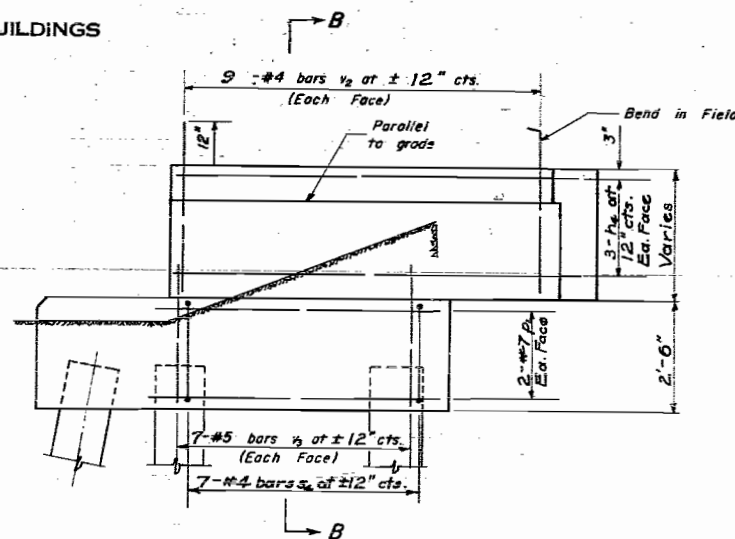
STATE OF ILLINOIS
DEPARTMENT OF PUBLIC WORKS & BUILDINGS
DIVISION OF HIGHWAYS

ROUTE NO.	SECTION	COUNTY	TOTAL SHEETS	SHEET NO.
A.R.L. 80	06-18	BUREAU	17	7
FED. ROAD DIST. NO. 7		ILLINOIS		FED. AID PROJECT

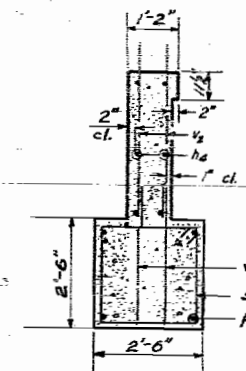
SHEET NO. 5
9 SHEETS



ELEVATION
At Right Angles to E. Rdwy.
W. Abut. looking W. (No. Lane), E. Abut. looking E. (So. Lane)

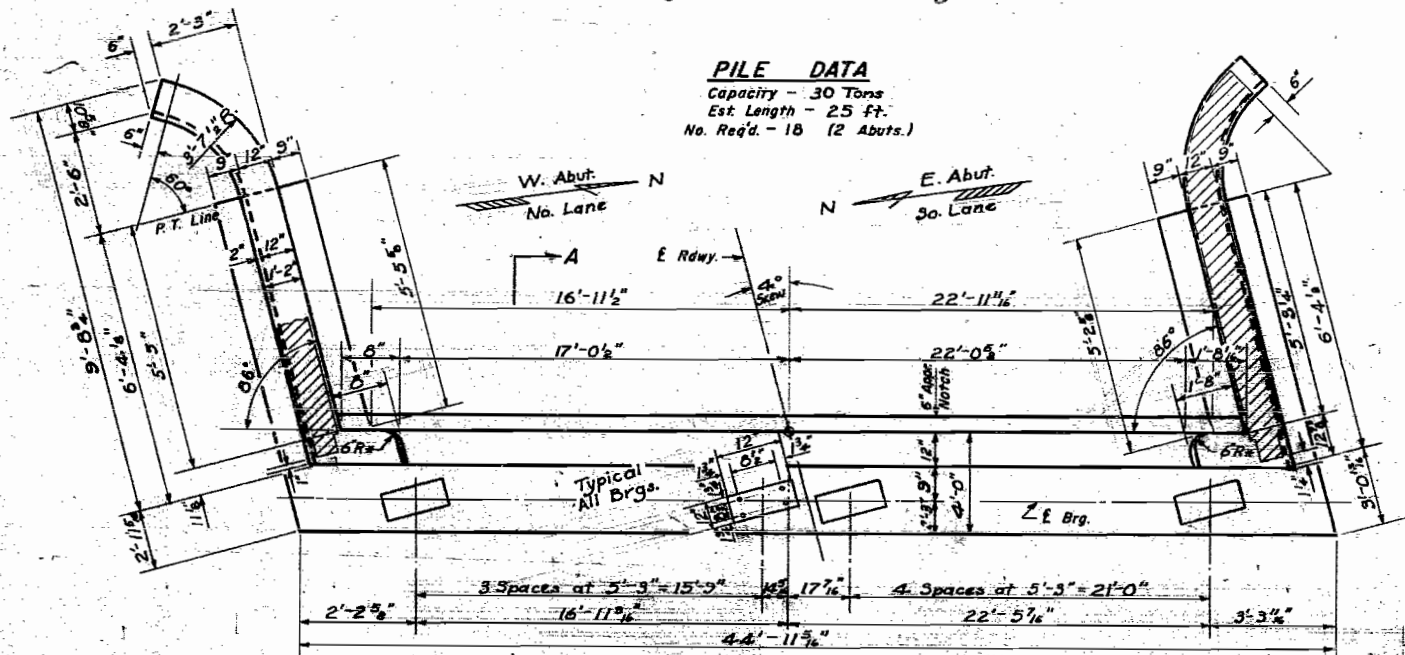


SIDE ELEVATION

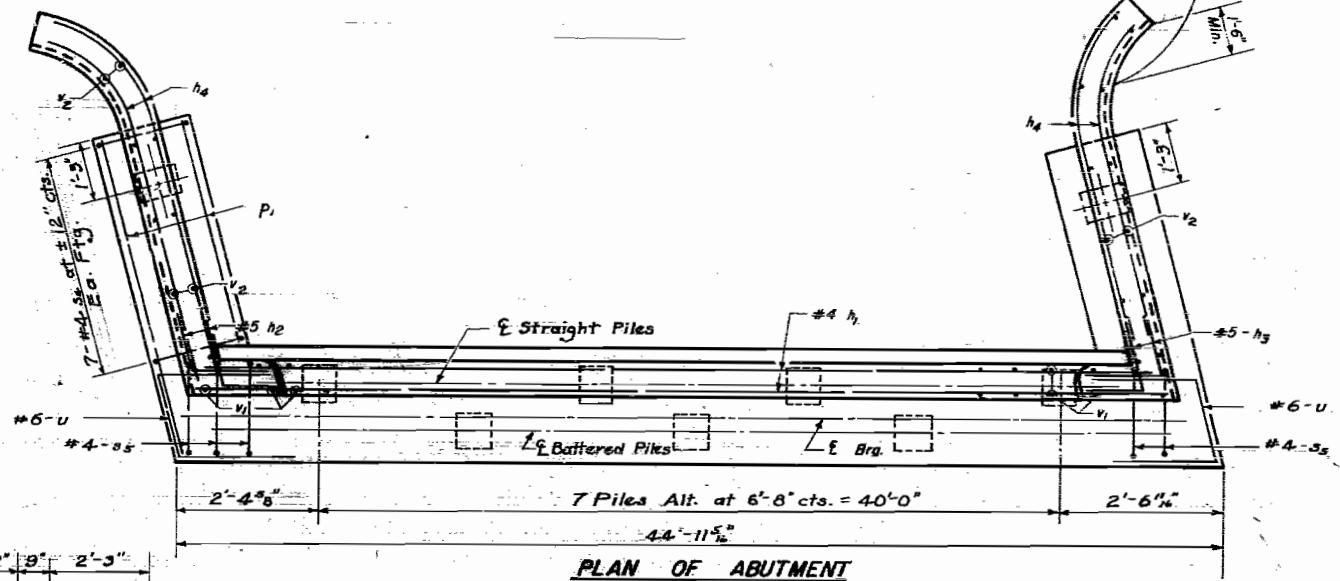


SECTION B-B

PILE DATA
Capacity - 30 Tons
Est. Length - 25 Ft.
No. Req'd. - 18 (2 Abuts.)

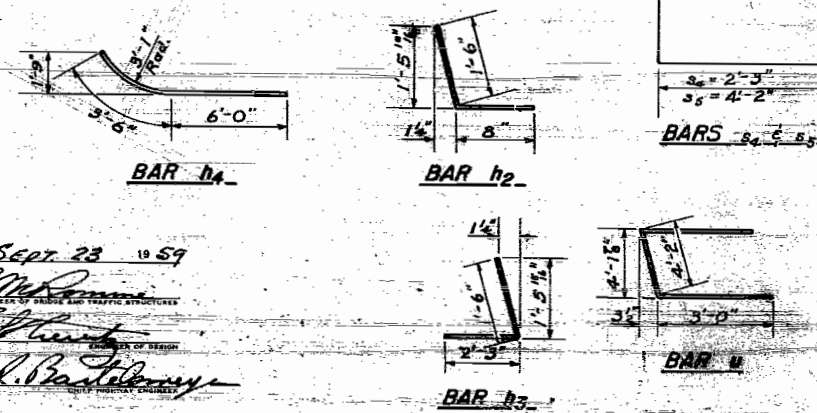


PLAN OF ABUTMENT
Dimensions



PLAN OF ABUTMENT
Reinforcement & Pile Spacing

* Note: Contractor shall construct curb without radius when a curb & gutter are used on bridge approaches. (See road plans).



BILL OF REINFORCEMENT

Bar	No.	Size	Length	Shape	Bar	No.	Size	Length	Shape
s_4	20	#4	5'-10"	—	s_5	90	#4	13'-6"	—
h_1	16	#4	20'-3"	—	u	16	#6	10'-2"	—
h_2	12	#5	2'-2"	L	v_1	168	#4	2'-9"	—
h_3	12	#5	3'-9"	J	v_2	72	#4	3'-9"	—
h_4	24	#5	9'-6"	—	v_3	56	#5	4'-0"	—
p	24	#7	23'-3"	—					
p_1	16	#7	9'-0"	—					

BILL OF MATERIAL

Item	Unit	Quantity
Class X Concrete	Cu. Yd.	53.7
Reinforcement Bars	Lb.	3930
Concrete Piles	Lin. Ft.	450

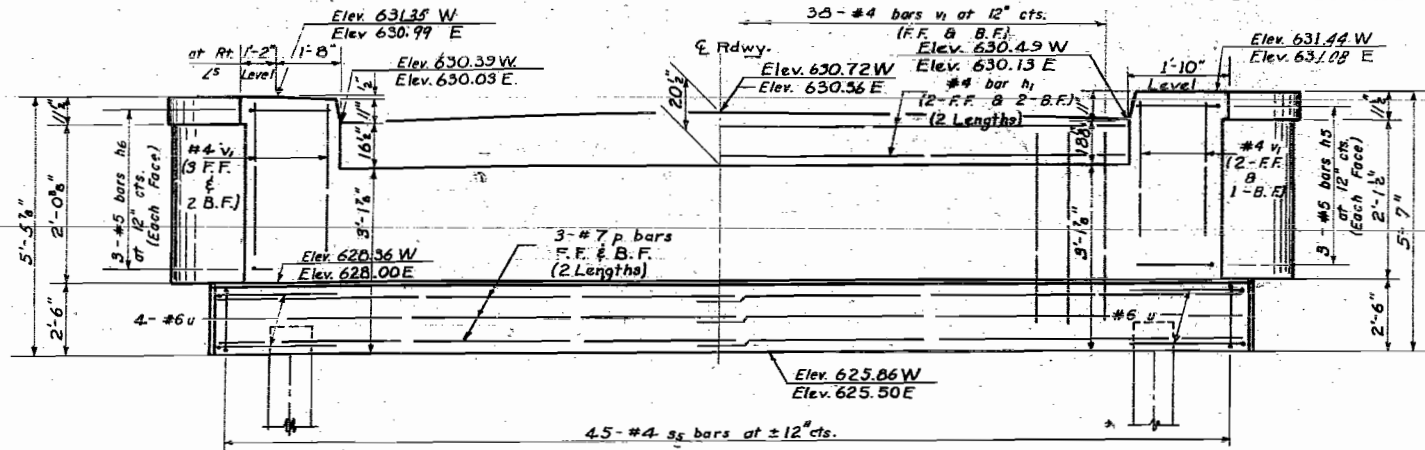
DESIGNED: Abraham K. P. D. B. (Signature)
CHECKED: E. J. Hunt, Jr. (Signature)
DRAWN: W. A. Sausaman, (Signature)
EXAMINED: (Signature)
PASSED: (Signature)
APPROVED: R. H. Pastorek (Signature)

SEPT 23 1959

E. ABUT. (SO. LANE)
W. ABUT. (NO. LANE)
F.A.1 RT. 80 - SEC. 06-18
BUREAU COUNTY
STA. 55+30

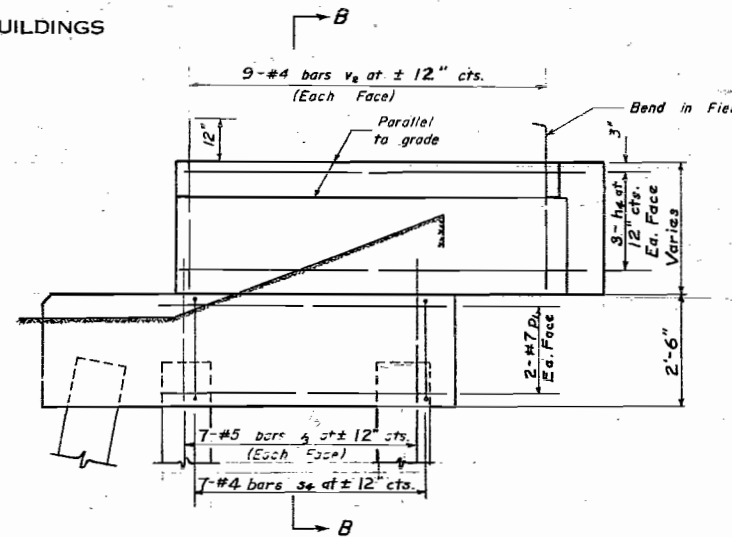
STATE OF ILLINOIS
DEPARTMENT OF PUBLIC WORKS & BUILDINGS
DIVISION OF HIGHWAYS

ROUTE NO.	SHEET NO.	TOTAL SHEETS	SHEET NO.
F.A. RT. 80	06-1B	BUREAU	17
			8
			9 SHEETS

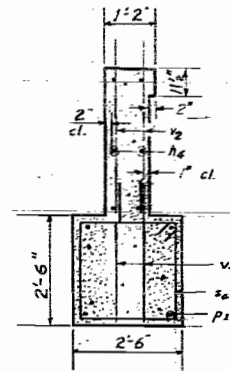


ELEVATION

At Right Angles to E. Rdwy.
W. Abut. looking W. (So. Lane), E. Abut. looking E. (No. Lane)



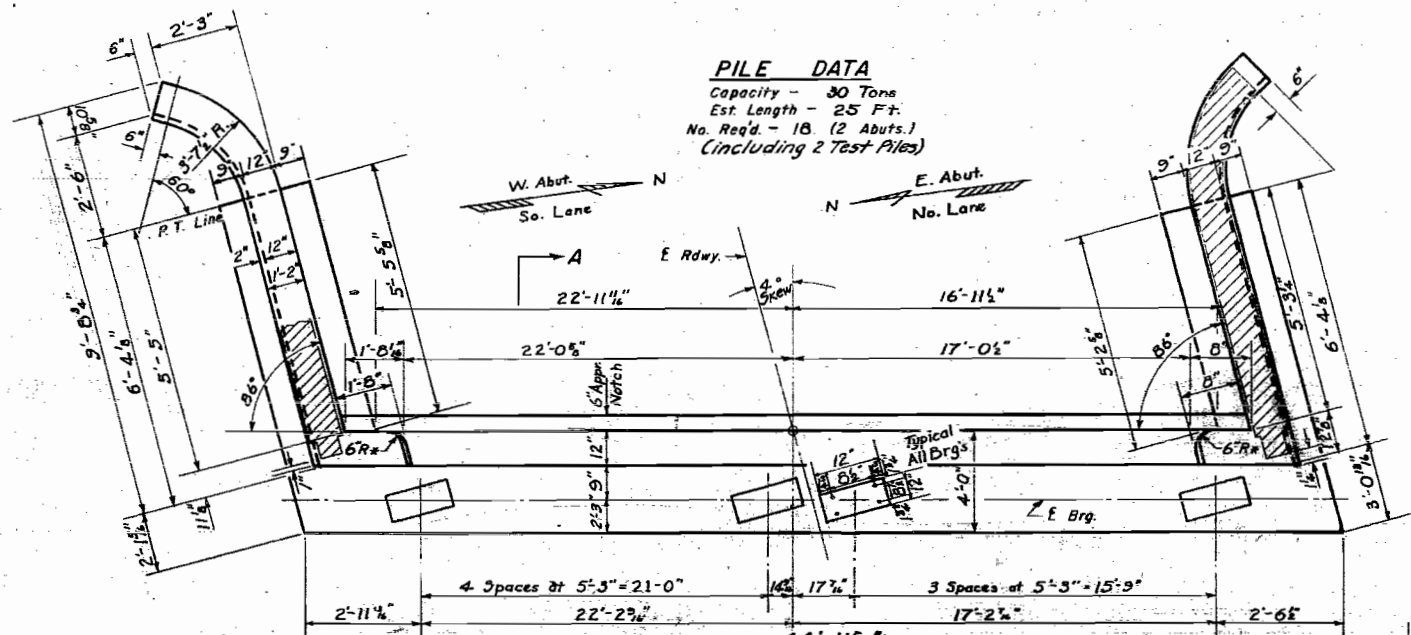
SIDE ELEVATION



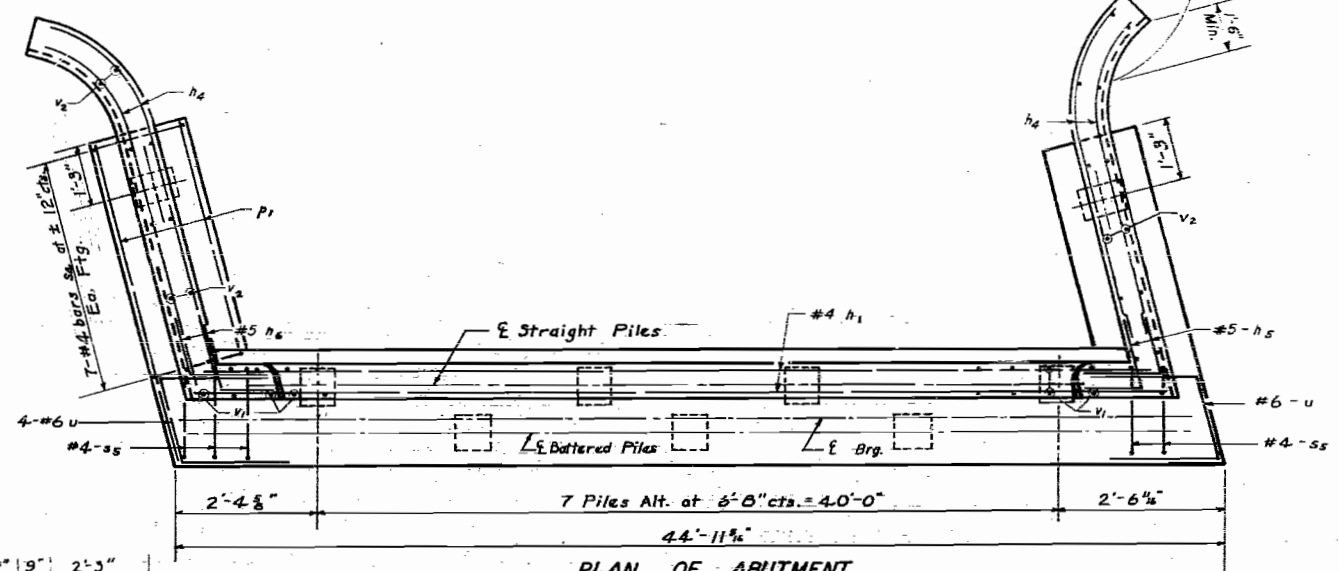
SECTION B-B

PILE DATA

Capacity - 30 Tons
Est. Length - 25 Ft.
No. Req'd - 18 (2 Abuts.)
(Including 2 Test Piles)

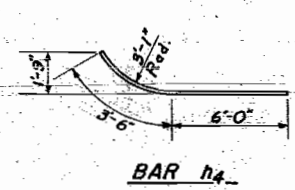


PLAN OF ABUTMENT
Dimensions

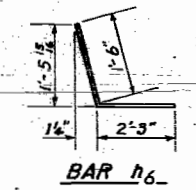


PLAN OF ABUTMENT
Reinforcement & Pile Spacing

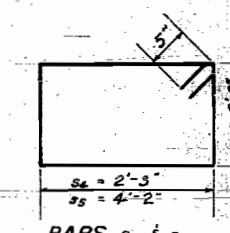
* Note: Contractor shall construct curb without radius when a curb & gutter are used on bridge approaches (See road plans).



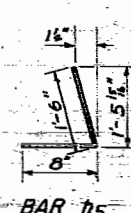
BAR h4



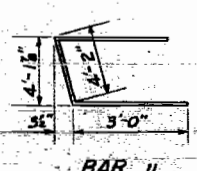
BAR h6



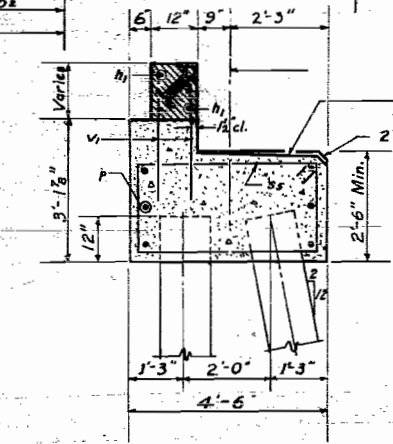
BARS s4 & s5



BAR u



BAR h5



SECTION A-A

BILL OF REINFORCEMENT

Bar	No.	Size	Length	Shape	Bar	No.	Size	Length	Shape
h1	16	#4	20'-3"	—	s4	28	#4	9'-10"	□
h6	12	#5	3'-3"	—	s5	30	#4	13'-6"	□
h5	12	#5	2'-2"	—	u	16	#6	10'-2"	□
h4	24	#5	9'-6"	—	v1	168	#4	2'-9"	—
					v2	72	#4	3'-9"	—
					v3	56	#5	4'-0"	—
P	24	#7	23'-3"	—					
P1	16	#7	9'-0"	—					

BILL OF MATERIAL

Item	Unit	Quantity
Class X Concrete	Cu. Yd.	53.1
Reinforcement Bars	Lb.	3930
Concrete Piles	Lin. Ft.	400
Test Piles (Concrete)	Ea.	2

W. ABUT. (SO. LANE)

E. ABUT. (NO. LANE)
F.A. RT. 80 SEC. 06-1B
BUREAU COUNTY
STA. 55 + 30

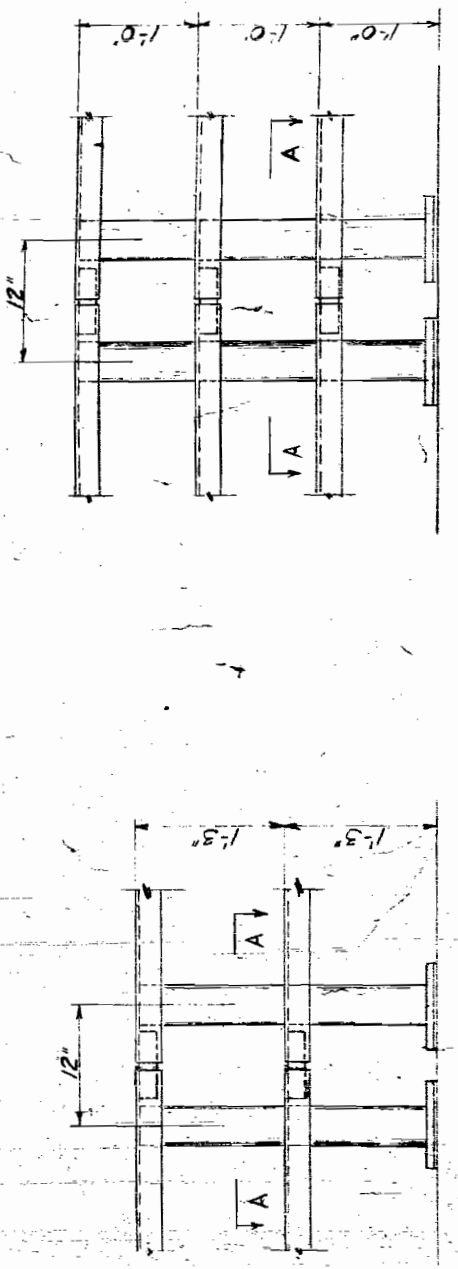
DESIGNED: Abraham K. P. Beck
CHECKED: E. M. Hunt, Jr.
DRAWN: W. A. Sausaman, Jr.
CHECKED: E. M. Hunt, Jr.

EXAMINED: [Signature]
PASSED: [Signature]
APPROVED: R. B. [Signature]

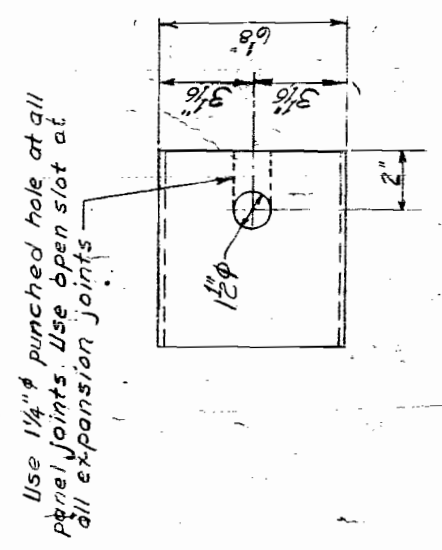
A-3-L Drawn 5-20-58 Rev. 9-26-58

Rev. 12-30-60 Raised top of wing wall elev. A.K.B.

INDUSTRY	NO. OF SHEETS	SHEET NO.	DATE	BY	CHKD.	APP'D.
FAI 80	06-1B	BUREAU	17	9A		
FED. RAILWAY ADMIN. PRODUCT						

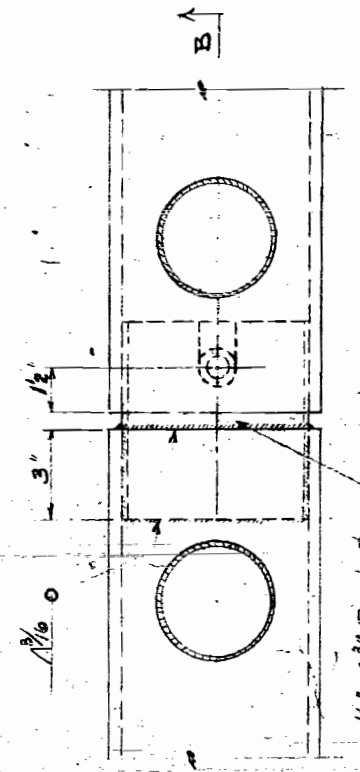


TYPICAL ELEVATION
@ PANEL JOINTS

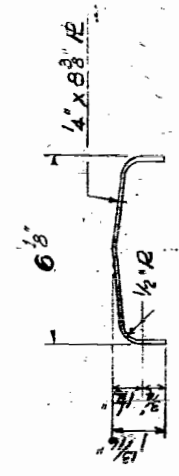


Use 1/4" punched hole at all panel joints. Use open slot at all expansion joints.

PLAN

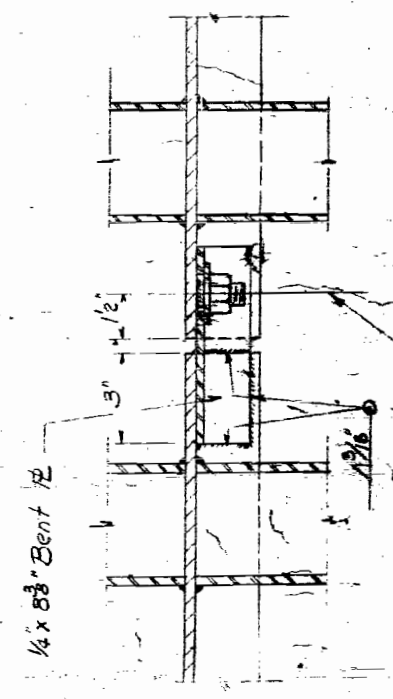


SECTION A-A



END VIEW

DETAIL 1/4" BENT R



SECTION B-B

3/8" x 1 1/4" GRANULATED OR SOLID FLUX FILLED STUD, THREADED FULL LENGTH - AUTOMATICALLY END WELDED OR 3/4" x 1/2" FULLY THREADED STUD WELDED WITH 1/8" CFW. PROVIDE WASHER AND LOCKNUT.

EXAMINED *[Signature]* Nov. 10, 1959
 DESIGNED BY *[Signature]*
 APPROVED *[Signature]*
 CIVIL ENGINEER

CONNECTION DETAILS
FOR BENT PLAT
RAIL PANELS

Rev. 11-30-59
 Revised 11/6/59 Changed dimension of bent plate from 3/16" to 1/8" J.F.K.