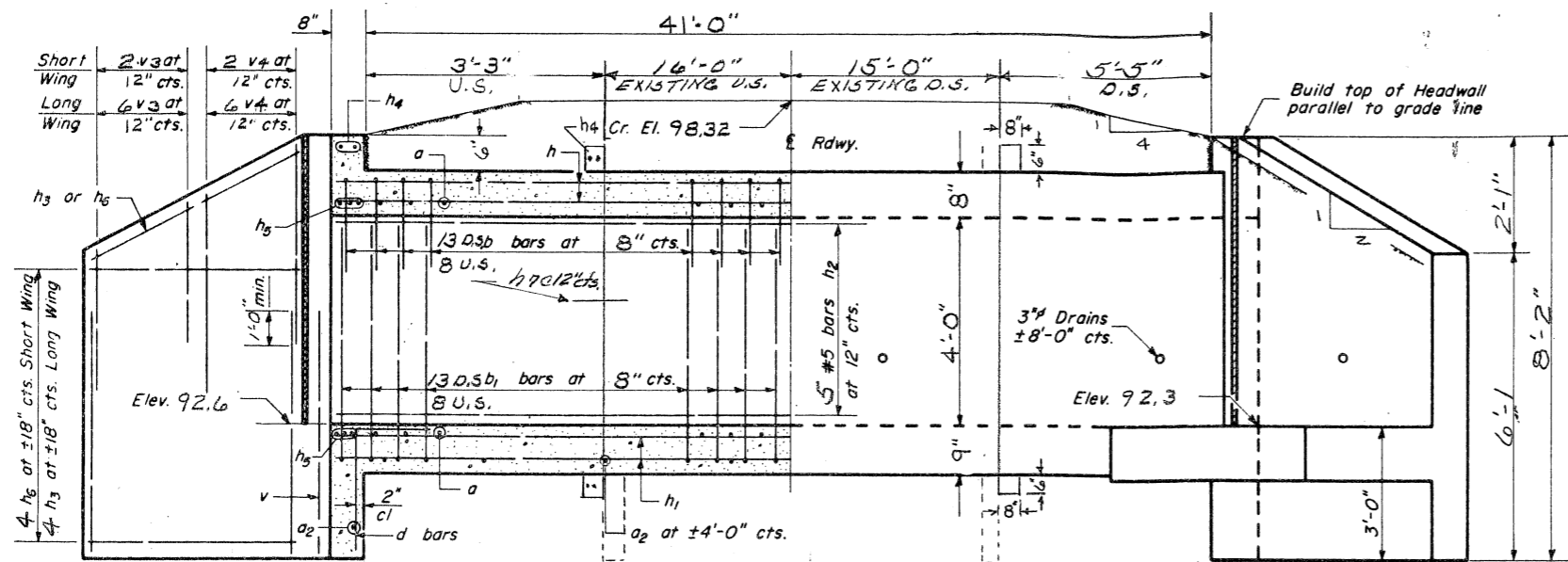
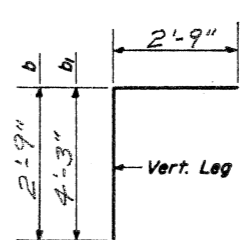
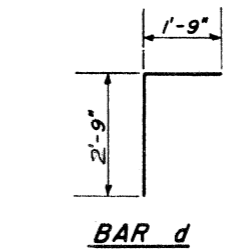


STATE OF ILLINOIS  
DEPARTMENT OF PUBLIC WORKS & BUILDINGS  
DIVISION OF HIGHWAYS

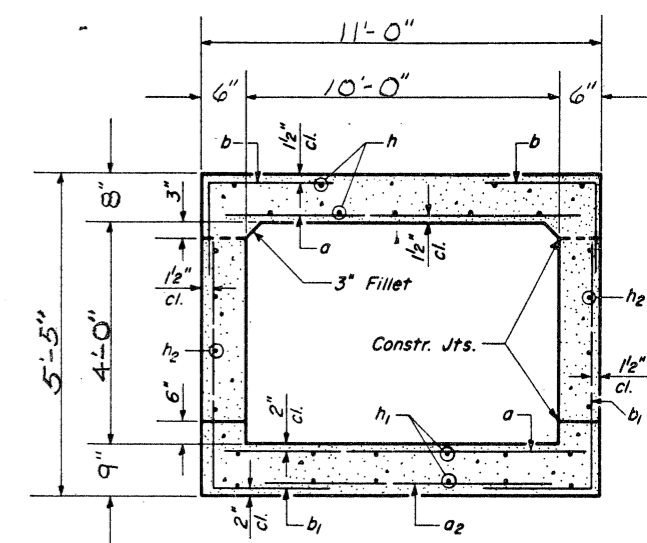
ROUTE NO.	SECTION	COUNTY	TOTAL SHEETS	SHEET NO.
S. B. I.				43
P. A.				SHEETS
FED. ROAD DIST. NO. 7	ILLINOIS	FED. AID PROJECT		



**HALF LONG SECTION HALF ELEVATION**  
Dimensions at Rt. 25 to E Roadway



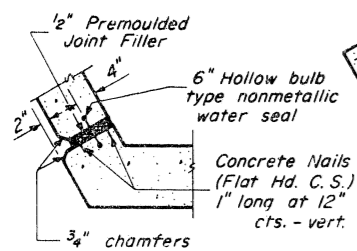
**BARS b & b1**



**SECTION THRU BARREL**  
NOTE: BILL OF MATERIAL SHOWN BELOW FOR BARREL AND DOWN STREAM WING.

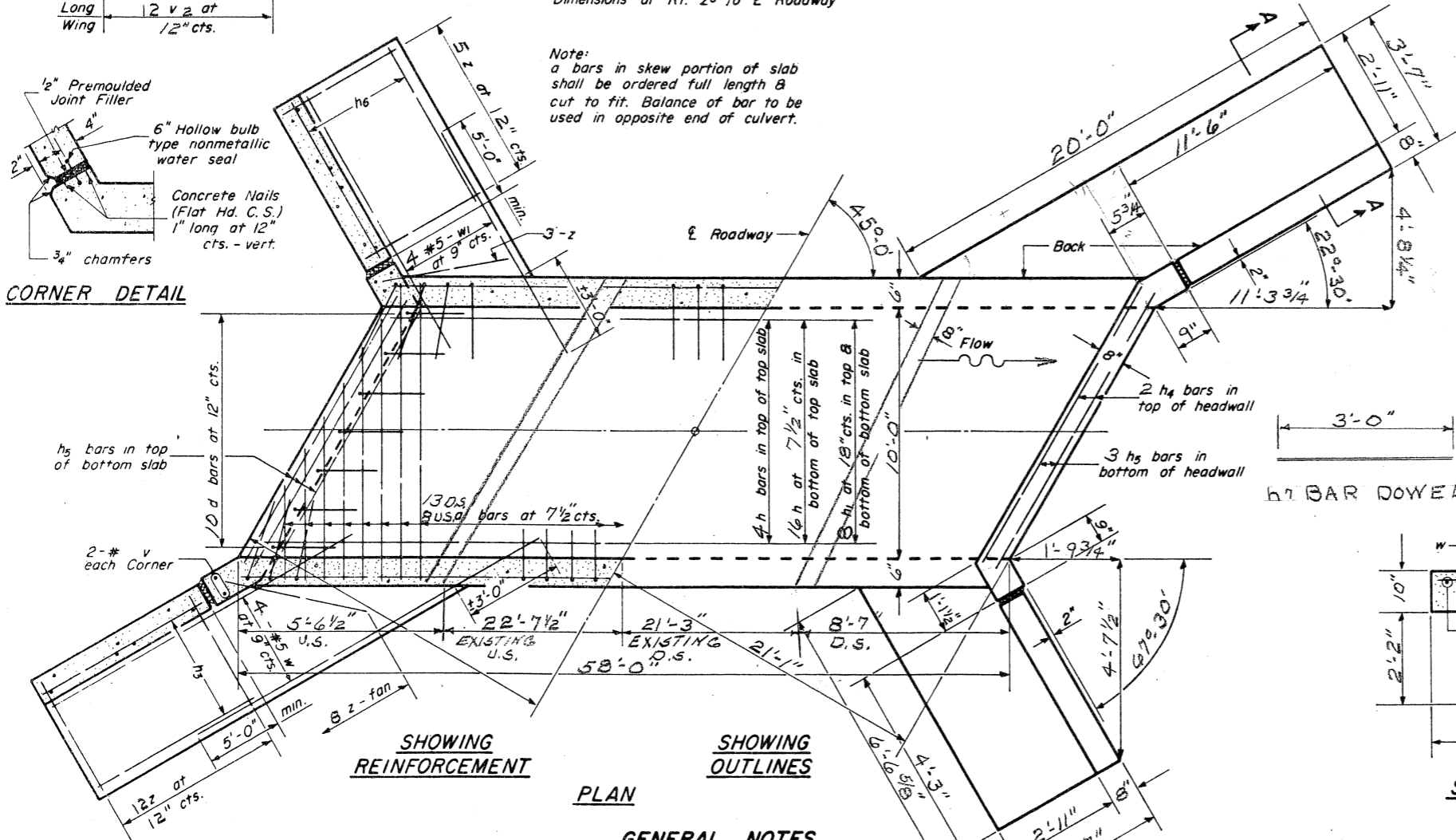
**BILL OF MATERIAL**

Bar	No.	Size	Length
a	42	#7	10'-8"
a2	6	#4	6'-6"
b	42	#5	5'-6"
b1	42	#5	7'-0"
d	10	#4	4'-6"
h	20EA.	#5	D.S. 8'-3" U.S. 5'-3"
h1	16EA	#5	D.S. 8'-3" U.S. 5'-3"
h2	10EA	#5	D.S. 8'-3" U.S. 5'-3"
h3	7	#4	11'-2"
h4	10	#7	14'-9"
h5	6	#7	14'-9"
h6	7	#4	3'-11"
v2	16	#4	4'-6"
v3	8	#4	3'-9"
v4	8	#4	4'-9"
w	4	#5	16'-6"
w1	4	#5	10'-3"
z	30	#4	6'-0"
h1	60	#6	3'-0"
Class X Concrete	Cu. Yds.		15.7
Reinforcement Bars	Lbs.		3308

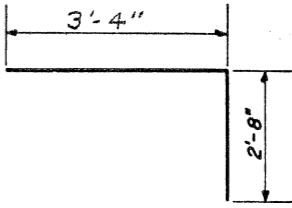


**CORNER DETAIL**

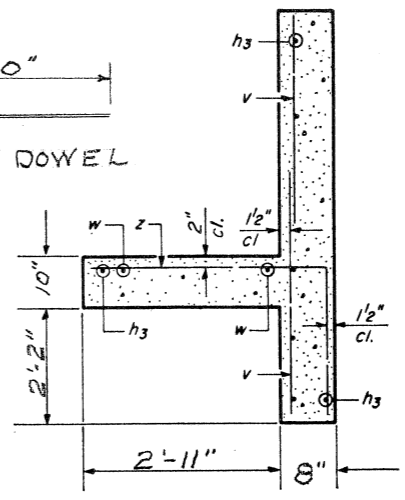
Note:  
a bars in skew portion of slab shall be ordered full length & cut to fit. Balance of bar to be used in opposite end of culvert.



**SHOWING REINFORCEMENT SHOWING OUTLINES**  
**PLAN**



**BAR z**



**SECTION A-A**

**GENERAL NOTES**

Class X Concrete shall be used throughout.  
Exposed edges shall be beveled 3/4".  
For backfilling and embankment see St'd. Spec's.  
All bars shall be lapped 20 diameters unless otherwise specified.  
The top of the culvert, the backs of the sidewalls above the lower construction joint and backs of the wings above the tops of the footings shall be waterproofed in accordance with Art. 51.21 of the St'd. Spec's.

fs = 20,000 psi.  
fc = 1400 psi. barrel  
fc = 1000 psi wings  
v = 90 psi barrel  
v = 75 psi footing  
n = 10

DESIGNED	W. J. S.	19
CHECKED	G. H. W.	
DRAWN		
EXAMINED		
PASSED		
APPROVED		

SEC 38A  
STA. 253+38

