

04-28-2023 LETTING ITEM 081

STATE OF ILLINOIS
DEPARTMENT OF TRANSPORTATION

FAU RTE.	SECTION	COUNTY	TOTAL SHEETS	SHEET NO.
2593	21-00115-00-RS	DuPAGE	24	1
		ALANDS	CONTRACT NO. 61J41	

FOR INDEX OF SHEETS, SEE SHEET NO. 2

WOODWARD AVENUE DESIGN DESIGNATION
MINOR ARTERIAL

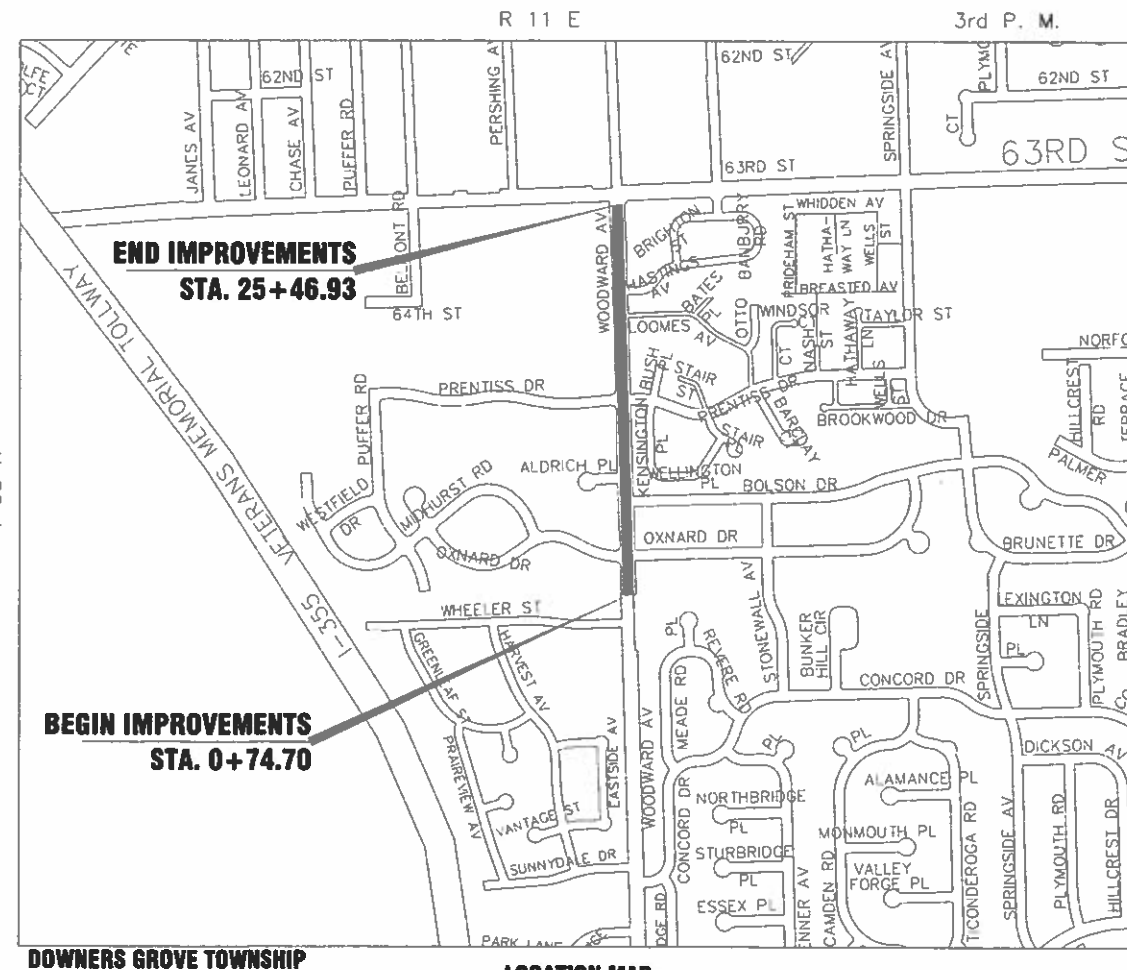
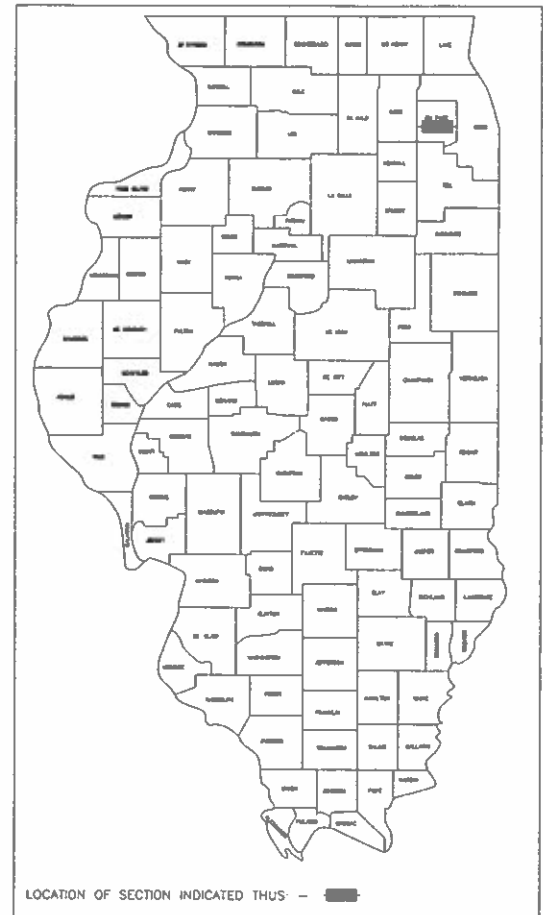
TRAFFIC DATA
WOODWARD AVENUE 2020 ADT = 16,500

POSTED SPEED LIMIT
WOODWARD AVENUE = 30 MPH

DESIGN SPEED LIMIT
WOODWARD AVENUE = 30 MPH

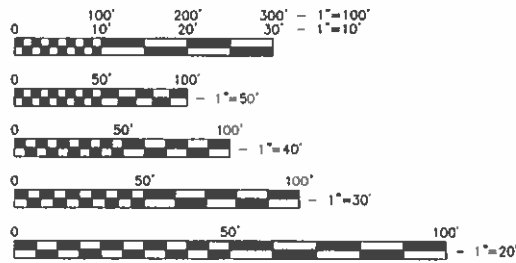
**PROPOSED PLANS FOR
FEDERAL AID HIGHWAY
FAU ROUTE 2593 (WOODWARD AVENUE)
S. VILLAGE LIMIT TO FAU 1518 (63RD STREET)
RESURFACING**

**SECTION No.: 21-00115-00-RS
PROJECT No: PW1X(274)
VILLAGE OF DOWNERS GROVE
DuPAGE COUNTY
C-91-028-22**



LOCATION MAP
NOT TO SCALE

GROSS LENGTH = 2,472.23 FT = 0.468 MILE
NET LENGTH = 2,472.23 FT = 0.468 MILE



FULL SIZE PLANS HAVE BEEN PREPARED USING STANDARD ENGINEERING SCALES. REDUCED SIZE PLANS WILL NOT CONFORM TO STANDARD SCALES. IN MAKING MEASUREMENTS ON REDUCED PLANS, THE ABOVE SCALES MAY BE USED.

J.U.L.I.E.
JOINT UTILITY LOCATION INFORMATION FOR EXCAVATION
1-800-892-0123
OR 811

CONTRACT NO. 61J41



Scott A. Vasko, P.E.
Village of Downers Grove
Expires 11/30/23

STATE OF ILLINOIS
DEPARTMENT OF TRANSPORTATION

APPROVED February 1 2023
VILLAGE OF DOWNERS GROVE, DIRECTOR OF PUBLIC WORKS

PASSED 2-21-2023 20____
DISTRICT 1 ENGINEER OF LOCAL ROADS AND STREETS

RELEASING FOR BID
BASED ON LIMITED
REVIEW FEBRUARY 21 2023
REGIONAL ENGINEER

**PRINTED BY THE AUTHORITY
OF THE STATE OF ILLINOIS**

FEDERAL AID PROGRAM ENGINEER: CARMEN E. RAMOS, P. E. SCHAUMBURG, IL

INDEX OF SHEETS

1	COVER SHEET
2	INDEX OF SHEETS, HIGHWAY STANDARDS, LIST OF DETAILS, AND GENERAL NOTES
3 - 6	SUMMARY OF QUANTITIES
7	EXISTING TYPICAL SECTIONS
8	PROPOSED TYPICAL SECTIONS
9	PLAN SHEET (STA. 0+00 TO STA. 12+00)
10	PLAN SHEET (STA. 12+00 TO STA. 24+00)
11	PLAN SHEET (STA. 24+00 TO STA. 26+25.92)
12	CURB RAMP DETAILS
13	VILLAGE DETAILS
14 - 24	DISTRICT 1 DETAILS

HIGHWAY STANDARDS

000001-08	STANDARD SYMBOLS, ABBREVIATIONS, AND PATTERNS
280001-07	TEMPORARY EROSION CONTROL SYSTEMS
424001-11	PERPENDICULAR CURB RAMPS FOR SIDEWALKS
424011-04	CORNER PARALLEL CURB RAMPS FOR SIDEWALKS
442201-03	CLASS C & D PATCHES
606001-08	CONCRETE CURB TYPE B & COMBINATION CONCRETE CURB AND GUTTER
701006-05	OFF-RD OPERATIONS, 2L, 2W, 15' TO 24" FROM PAVEMENT EDGE
701101-05	OFF-RD OPERATIONS, MULTILANE, 15' TO 24" FROM PAVEMENT EDGE
701311-03	LANE CLOSURE, 2L, 2W MOVING OPERATIONS - DAY ONLY
701427-05	LANE CLOSURE, MULTILANE, INTERMITTENT OR MOVING OPER., FOR SPEEDS < 40 MPH
701606-10	URBAN SINGLE LANE CLOSURE, MULTILANE, 2W WITH MOUNTABLE MEDIAN
701701-10	URBAN LANE CLOSURE, MULTILANE INTERSECTION
701801-06	SIDEWALK, CORNER OR CROSSWALK CLOSURE
701901-08	TRAFFIC CONTROL DEVICES
886001-01	DETECTOR LOOP INSTALLATIONS

LIST OF DETAILS

BD-08	DETAILS FOR FRAMES AND LIDS ADJUSTMENT WITH MILLING
BD-22	PAVEMENT PATCHING FOR HMA SURFACED STREETS
BD-32	BUTT JOINT AND HMA TAPER DETAILS
TC-10	TRAFFIC CONTROL AND PROTECTION FOR SIDE ROADS, INTERSECTIONS AND DRIVEWAYS
TC-13	DISTRICT 1 TYPICAL PAVEMENT MARKINGS DETAIL
TC-14	TRAFFIC CONTROL AND PROTECTION AT TURN BAYS (TO REMAIN OPEN TO TRAFFIC)
TC-16	PAVEMENT MARKING LETTERS & SYMBOLS FOR TRAFFIC STAGING
TC-22	ARTERIAL ROAD INFORMATION SIGN
TC-26	DRIVEWAY ENTRANCE SIGNING
TS-05	DISTRICT 1 STANDARD TRAFFIC SIGNAL DESIGN DETAILS
TS-07	DISTRICT 1 - DETECTOR LOOP INSTALLATION DETAILS FOR ROADWAY RESURFACING

GENERAL NOTES

- ALL REFERENCES TO THE 'VILLAGE' IN THESE GENERAL NOTES SHALL BE INTERPRETED TO MEAN THE VILLAGE OF DOWNERS GROVE.
- THOSE EXISTING TRAFFIC SIGNS WHICH ARE SO DESIGNATED BY THE ENGINEER SHALL BE REMOVED, STORED AND SUBSEQUENTLY RELOCATED BY THE CONTRACTOR IN ACCORDANCE WITH ARTICLE 107.25. ANY SIGNS WHICH ARE DAMAGED BY THE CONTRACTOR AS DETERMINED BY THE ENGINEER SHALL BE REPLACED IN KIND BY THE CONTRACTOR.
- ALL TRAFFIC CONTROL AND OTHER ADVISORY SIGNS NEEDED FOR CONSTRUCTION ARE TO BE FURNISHED BY THE CONTRACTOR IN ACCORDANCE WITH THE PLANS AND IDOT STANDARDS FOR TRAFFIC CONTROL AND PROTECTION.
- SAW CUTTING OF PAVEMENTS, SIDEWALK, ETC. SHALL BE FULL DEPTH AND SHALL RESULT IN A CLEAN STRAIGHT EDGE ON THE PORTION REMAINING.
- THE CONTRACTOR SHALL BE RESPONSIBLE FOR THE PROTECTION OF ALL UNDERGROUND OR SURFACE UTILITIES EVEN THOUGH THEY MAY NOT BE SHOWN ON THE PLANS. ANY UTILITY THAT IS DAMAGED DURING CONSTRUCTION SHALL BE REPAIRED OR REPLACED TO THE SATISFACTION OF THE ENGINEER.
- WHENEVER, DURING CONSTRUCTION OPERATIONS, ANY LOOSE MATERIAL IS DEPOSITED IN THE FLOW LINE OF DRAINAGE STRUCTURES SUCH THAT THE NATURAL FLOW OF WATER IS OBSTRUCTED, IT SHALL BE REMOVED AT THE CLOSE OF EACH WORKING DAY. AT THE CONCLUSION OF CONSTRUCTION OPERATIONS, ALL DRAINAGE STRUCTURES SHALL BE FREE OF DIRT AND DEBRIS.
- THE CONTRACTOR SHALL NOT OPEN OR SHUT ANY WATER VALVES OR FIRE HYDRANTS WITHOUT PRIOR AUTHORIZATION FROM THE VILLAGE WATER DEPARTMENT.
- THE THICKNESS OF THE HOT-MIX ASPHALT MIXTURES SHOWN IN THE PLANS ARE NOMINAL. DEVIATIONS MAY OCCUR DUE TO IRREGULARITIES IN THE SURFACES OR BASE ON WHICH THEY ARE PLACED.
- MAILBOXES WHICH ARE IN CONFLICT WITH PROPOSED IMPROVEMENTS SHALL BE REMOVED, TEMPORARILY RELOCATED, AND REPLACED UPON COMPLETION OF THE PROPOSED IMPROVEMENTS IN ACCORDANCE WITH ARTICLE 107.20 AND AS DIRECTED BY THE ENGINEER.
- CONTRACTOR SHALL TAKE PRECAUTION BY PRESERVING EXISTING TREES WITHIN THE RIGHT OF WAY. IF ANY DAMAGE OCCURS, TREES SHALL BE REPLACED IN KIND PER ARTICLE 201.07 REPAIR AOR REPLACEMENT OF EXISTING PLANT MATERIAL REQUIREMENTS STATED HEREIN.
- ALL NITROGEN, PHOSPHORUS, AND POTASSIUM FERTILIZER NUTRIENTS HAVE BEEN INTENTIONALLY OMITTED FROM THE CONTRACT ON SODDING APPLICATION.
- THE CONTRACTOR SHALL CONTACT THE IDOT ARTERIAL DISTRICT ONE TRAFFIC CONTROL SUPERVISOR KALPANA KANNAN-HOSADURGA AT KALPANA.KANNAN-HOSADURGA@ILLINOIS.GOV A MINIMUM OF 72 HOURS IN ADVANCE OF BEGINNING WORK.

DUPAGE COUNTY DIVISION OF TRANSPORTATION GENERAL NOTES AND SPECIFICATIONS

- ALL CONSTRUCTION WITHIN THE COUNTY'S RIGHT-OF-WAY SHALL BE PERFORMED ACCORDING TO IDOT'S "STANDARD SPECIFICATIONS FOR ROAD AND BRIDGE CONSTRUCTION" ADOPTED JANUARY 1, 2022 AND THE "SUPPLEMENTAL SPECIFICATIONS AND RECURRING SPECIAL PROVISIONS" ADOPTED JANUARY 1, 2023.
- DAILY LANE CLOSURES ARE PERMITTED BETWEEN 9:00 A.M. AND 4:00 P.M. ONLY. TRAFFIC CONTROL SHALL CONFORM TO IDOT'S HIGHWAY STANDARDS THE FHWA'S 'MANUAL FOR UNIFORM TRAFFIC CONTROL DEVICES' AND IDOT'S SUPPLEMENT TO THE MUTCD AT ALL TIMES DURING CONSTRUCTION.
- LANE CLOSURES ARE NOT PERMITTED ON COUNTY ROADWAYS DURING SNOWFALL OR WITHIN 2 HOURS PRIOR TO PREDICTED SNOWFALL OR PRECIPITATION CONDITIONS BETWEEN NOVEMBER 15 AND APRIL 15 FOR MAINTENANCE OF THE ROADWAY PAVEMENT BY COUNTY HIGHWAY MAINTENANCE DEPARTMENT STAFF AND EQUIPMENT.
- DISTURBED AREAS OF THE RIGHT-OF-WAY SHALL BE DRESSED WITH A MINIMUM OF 4" TOPSOIL AND CLASS 2A SALT TOLERANT SEED (WITH EROSION CONTROL BLANKET) OR SOD (SALT TOLERANT AND STAKED IN PLACE).
- THE DUPAGE COUNTY DIVISION OF TRANSPORTATION OPERATES/MAINTAINS TRAFFIC SIGNALS AND RELATED EQUIPMENT WITHIN THE VICINITY OF THE PROJECT. CONTACT THE DIVISION OF TRANSPORTATION A MINIMUM OF 48 HOURS PRIOR TO THE START OF CONSTRUCTION WITHIN THE COUNTY'S RIGHT OF WAY AND WITHIN 300' OF ANY COUNTY MAINTAINED SIGNAL TO LOCATE SAID EQUIPMENT. TRAFFIC SIGNALS AND RELATED EQUIPMENT ARE NOT ON THE J.U.L.I.E. SYSTEM.
- EROSION CONTROL MEASURES SHALL COMPLY WITH THE MINIMUM REQUIREMENTS OF THE DUPAGE COUNTY STORMWATER AND FLOODPLAIN ORDINANCE SPECIFICATIONS AT ALL TIMES.
- EQUIPMENT AND MATERIALS SHALL NOT BE STORED WITHIN THE COUNTY'S RIGHT-OF-WAY AT ANY TIME WITHOUT THE EXPRESS WRITTEN PERMISSION OF THE COUNTY ENGINEER, OR HIS DULY AUTHORIZED ASSIGN.
- PAVEMENT, CURB/GUTTER AND STORM STRUCTURES WITHIN THE COUNTY'S RIGHT-OF-WAY SHALL BE MAINTAINED FREE OF MUD/DEBRIS AT ALL TIMES AND SHALL BE CLEANED AS IS REQUIRED AND/OR AS DIRECTED BY DUPAGE COUNTY.
- CONTACT DUPAGE COUNTY (630/407-6900) A MINIMUM OF 48 HOURS PRIOR TO THE START OF CONSTRUCTION TO ARRANGE FOR INSPECTIONS OF AND AT THE COMPLETION OF THE DESCRIBED WORK WITHIN THE COUNTY'S RIGHT-OF-WAY.
- TRENCH BACKFILL FOR NON-PAVED AREAS SHALL BE INSTALLED WITHIN THE COUNTY'S RIGHT-OF-WAY PER DUPAGE COUNTY'S STANDARD.
- TRENCH BACKFILL BELOW EXISTING OR PROPOSED PAVEMENT, CURB/GUTTER AND/OR SIDEWALK SHALL BE INSTALLED WITHIN THE COUNTY'S RIGHT OF WAY PER DUPAGE COUNTY'S STANDARD.

STATE OF ILLINOIS DEPARTMENT OF TRANSPORTATION

INDEX OF SHEETS, HIGHWAY STANDARDS, LIST OF DETAILS AND GENERAL NOTES

FILE NAME =	USER NAME -- USER	DESIGNED -- NRH	REVISED	<p style="text-align: center;">STATE OF ILLINOIS DEPARTMENT OF TRANSPORTATION</p> <p style="text-align: center;">INDEX OF SHEETS, HIGHWAY STANDARDS, LIST OF DETAILS AND GENERAL NOTES</p>	F.A.U. RTE.	SECTION	COUNTY	TOTAL SHEETS	SHEET NO.	
FILE NAME =		DRAWN -- NRH	REVISED		2593	21-00115-00-RS	DuPAGE	24	2	
	PLOT SCALE --	CHECKED -- SWG	REVISED		CONTRACT NO. 61J41					
	PLOT DATE -- 01/30/22	DATE -- 01/30/22	REVISED			ILLINOIS	FED. AID PROJECT			
				NOT TO SCALE	SHEET NO. 1 OF 1 SHEETS			STA.	TO STA.	

CODE NO.	ITEM	UNIT	TOTAL QUANTITY	CONSTRUCTION CODE	
				STP FUNDS	
				80% FED / 20% LA	
				ROADWAY	URBAN
20200100	EARTH EXCAVATION	CU YD	50	50	
21001000	GEOTECHNICAL FABRIC FOR GROUND STABILIZATION	SQ YD	115	115	
21101615	TOPSOIL FURNISH AND PLACE, 4"	SQ YD	300	300	
25200110	SODDING, SALT TOLERANT	SQ YD	300	300	
△ 25200200	SUPPLEMENTAL WATERING	UNIT	17	17	
28000250	TEMPORARY EROSION CONTROL SEEDING	POUND	7	7	
28000510	INLET FILTERS	EACH	22	22	
35101600	AGGREGATE BASE COURSE, TYPE B 4"	SQ YD	85	85	
40600290	BITUMINOUS MATERIALS (TACK COAT)	POUND	9,600	9,600	
40600400	MIXTURE FOR CRACKS, JOINTS, AND FLANGEWAYS	TON	50	50	
40600982	HOT-MIX ASPHALT SURFACE REMOVAL - BUTT JOINT	SQ YD	230	230	
40603200	POLYMERIZED HOT-MIX ASPHALT BINDER COURSE, IL-4.75, N50	TON	600	600	
40604062	HOT-MIX ASPHALT SURFACE COURSE, IL-9.5, MIX "D", N70	TON	1,200	1,200	
42400800	DETECTABLE WARNINGS	SQ FT	60	60	
44000157	HOT-MIX ASPHALT SURFACE REMOVAL, 2"	SQ YD	14,000	14,000	
44000200	DRIVEWAY PAVEMENT REMOVAL	SQ YD	250	250	

+ DENOTES SPECIALTY ITEM
△ DENOTES ITEM WITH SPECIAL PROVISION

FILE NAME =	USER NAME - USER	DESIGNED - NRH	REVISED
FILE NAME =		DRAWN - NRH	REVISED
	PLOT SCALE -	CHECKED - SWG	REVISED
	PLOT DATE - 01/09/22	DATE - 01/09/22	REVISED

**STATE OF ILLINOIS
DEPARTMENT OF TRANSPORTATION**

SUMMARY OF QUANTITIES

NOT TO SCALE SHEET NO. 1 OF 4 SHEETS STA. TO STA.

FAU. RTE.	SECTION	COUNTY	TOTAL SHEETS	SHEET NO.
2593	21-00115-00-RS	DuPAGE	24	3
ILLINOIS			CONTRACT NO. 61J41	
FED. AID PROJECT				

CODE NO.	ITEM	UNIT	TOTAL QUANTITY	CONSTRUCTION CODE	
				STP FUNDS	80% FED / 20% LA ROADWAY
				0005	URBAN
44201737	CLASS D PATCHES, TYPE I, 8 INCH	SQ YD	175	175	
44201741	CLASS D PATCHES, TYPE II, 8 INCH	SQ YD	175	175	
44201745	CLASS D PATCHES, TYPE III, 8 INCH	SQ YD	175	175	
44201747	CLASS D PATCHES, TYPE IV, 8 INCH	SQ YD	175	175	
60266600	VALVE BOXES TO BE ADJUSTED	EACH	1	1	
60300305	FRAMES AND LIDS TO BE ADJUSTED	EACH	13	13	
60406000	FRAMES AND LIDS, TYPE 1, OPEN LID	EACH	1	1	
60406100	FRAMES AND LIDS, TYPE 1, CLOSED LID	EACH	1	1	
△ *	66900200 NON-SPECIAL WASTE DISPOSAL	CU YD	50	50	
△ *	66900530 SOIL DISPOSAL ANALYSIS	EACH	1	1	
△ *	66901001 REGULATED SUBSTANCES PRE-CONSTRUCTION PLAN	LSUM	1	1	
△ *	66901003 REGULATED SUBSTANCES FINAL CONSTRUCTION REPORT	LSUM	1	1	
△ *	66901006 REGULATED SUBSTANCES MONITORING	CAL DA	2	2	
	67100100 MOBILIZATION	LSUM	1	1	
	70102625 TRAFFIC CONTROL AND PROTECTION, STANDARD 701606	LSUM	1	1	
	70102635 TRAFFIC CONTROL AND PROTECTION, STANDARD 701701	LSUM	1	1	

* DENOTES SPECIALTY ITEM
△ DENOTES ITEM WITH SPECIAL PROVISION

**STATE OF ILLINOIS
DEPARTMENT OF TRANSPORTATION**

SUMMARY OF QUANTITIES

FILE NAME =	USER NAME - USER	DESIGNED - NRH	REVISED	STATE OF ILLINOIS DEPARTMENT OF TRANSPORTATION	SUMMARY OF QUANTITIES	F.A.U. SECTION	COUNTY	TOTAL SHEETS	SHEET NO.	
FILE NAME =		DRAWN - NRH	REVISED			2593 21-00115-00-RS	DuPAGE	24	4	
	PLOT SCALE -	CHECKED - SWG	REVISED			CONTRACT NO. E1J41				
	PLOT DATE - 01/09/21	DATE - 01/09/21	REVISED			ILLINOIS	FED. AID PROJECT			
				NOT TO SCALE	SHEET NO. 2 OF 4 SHEETS	STA.	TO STA.			

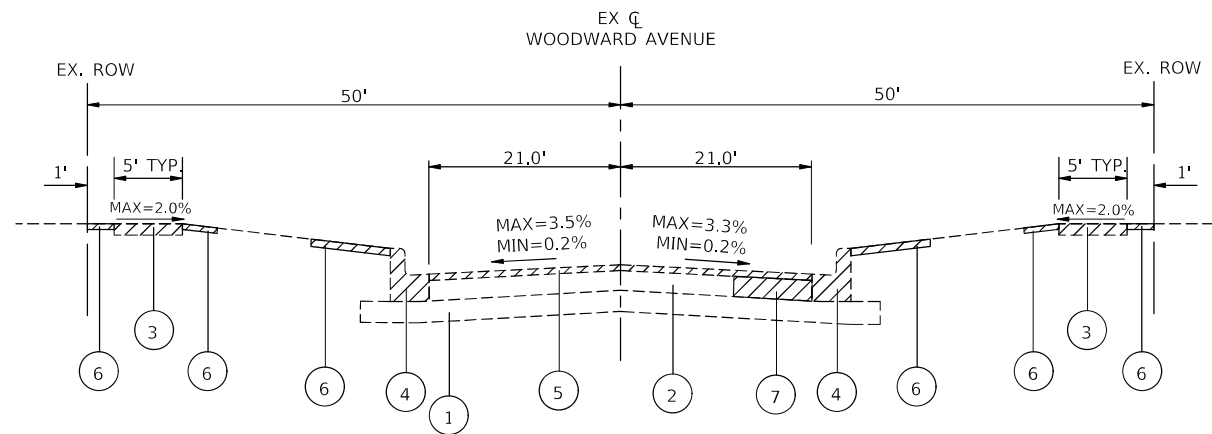
CODE NO.	ITEM	UNIT	TOTAL QUANTITY	CONSTRUCTION CODE	
				STP FUNDS 80% FED / 20% LA	ROADWAY 0005 URBAN
70102640	TRAFFIC CONTROL AND PROTECTION, STANDARD 701801	LSUM	1		1
70300100	SHORT TERM PAVEMENT MARKING	FOOT	2,500		2,500
70300150	SHORT TERM PAVEMENT MARKING REMOVAL	SQ FT	840		840
70306100	TEMPORARY PAVEMENT MARKING LETTERS AND SYMBOLS - TYPE III TAPE	SQ FT	225		225
* 78000100	THERMOPLASTIC PAVEMENT MARKING - LETTERS AND SYMBOLS	SQ FT	275		275
* 78000200	THERMOPLASTIC PAVEMENT MARKING - LINE 4"	FOOT	6,400		6,400
* 78000400	THERMOPLASTIC PAVEMENT MARKING - LINE 6"	FOOT	800		800
* 78000500	THERMOPLASTIC PAVEMENT MARKING - LINE 8"	FOOT	320		320
* 78000600	THERMOPLASTIC PAVEMENT MARKING - LINE 12"	FOOT	775		775
* 78000650	THERMOPLASTIC PAVEMENT MARKING - LINE 24"	FOOT	200		200
Δ * 88600600	DETECTOR LOOP REPLACEMENT	FOOT	200		200
Δ X0100002	GRADING AND SHAPING SPECIAL	SQ YD	80		80
Δ X0320050	CONSTRUCTION LAYOUT (SPECIAL)	LSUM	1		1
Δ X2070304	POROUS GRANULAR EMBANKMENT (SPECIAL)	CU YD	50		50
Δ X2800510	INLET FILTER CLEANING	EACH	22		22
Δ X4240430	PORTLAND CEMENT CONCRETE SIDEWALK 5 INCH (SPECIAL)	SQ FT	750		750

* DENOTES SPECIALTY ITEM
Δ DENOTES ITEM WITH SPECIAL PROVISION

FILE NAME =	USER NAME - USER	DESIGNED - NRH	REVISED	STATE OF ILLINOIS DEPARTMENT OF TRANSPORTATION	SUMMARY OF QUANTITIES	F.A.U. SECTION	COUNTY	TOTAL SHEETS	SHEET NO.	
FILE NAME =		DRAWN - NRH	REVISED			259321-00115-00-RS	DuPAGE	24	5	
	PLOT SCALE -	CHECKED - SWG	REVISED			CONTRACT NO. 61J41				
	PLOT DATE - 01/30/22	DATE - 01/30/22	REVISED			ILLINOIS	FED. AID PROJECT			
				NOT TO SCALE		SHEET NO. 3 OF 4 SHEETS		STA. TO STA.		

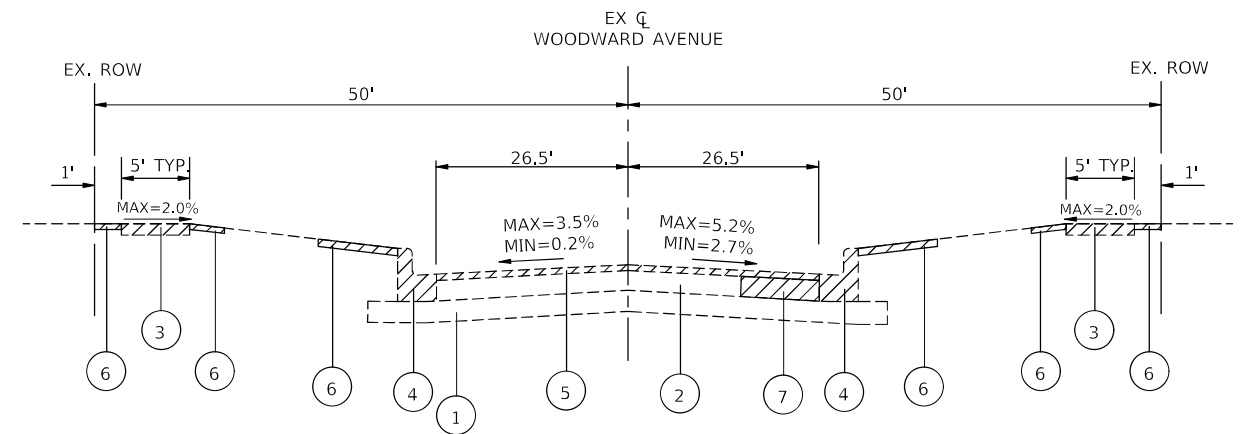
CODE NO.	ITEM	UNIT	TOTAL QUANTITY	CONSTRUCTION CODE	
				STP FUNDS 80% FED / 20% LA	ROADWAY
				0005	URBAN
△ X4400500	COMBINATION CURB AND GUTTER REMOVAL (SPECIAL)	FOOT	900	900	
△ X4404700	SIDEWALK REMOVAL (SPECIAL)	SQ FT	750	750	
△ X6061005	CONCRETE CURB, TYPE B (SPECIAL)	FOOT	50	50	
△ X6064200	COMBINATION CONCRETE CURB & GUTTER, TYPE B-6.12 (SPECIAL)	FOOT	900	900	
△ Z0004510	HOT-MIX ASPHALT DRIVEWAY PAVEMENT, 3"	SQ YD	250	250	
△ Z0030850	TEMPORARY INFORMATION SIGNING	SQ FT	110	110	

△ DENOTES SPECIALTY ITEM
 △ DENOTES ITEM WITH SPECIAL PROVISION



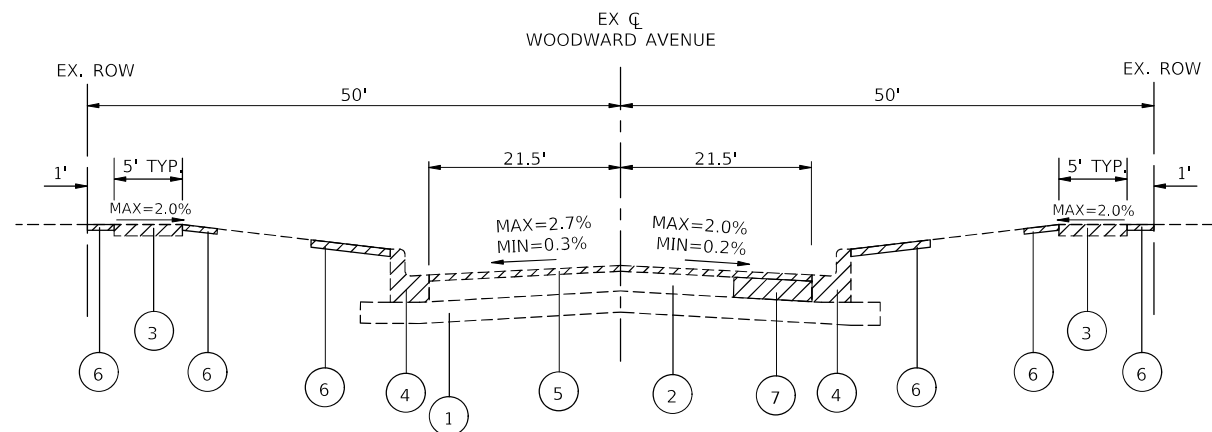
EXISTING TYPICAL SECTION

STA. 0+74.70 TO STA. 5+49.03, WOODWARD AVENUE
 STA. 18+27.79 TO STA. 21+49.15, WOODWARD AVENUE



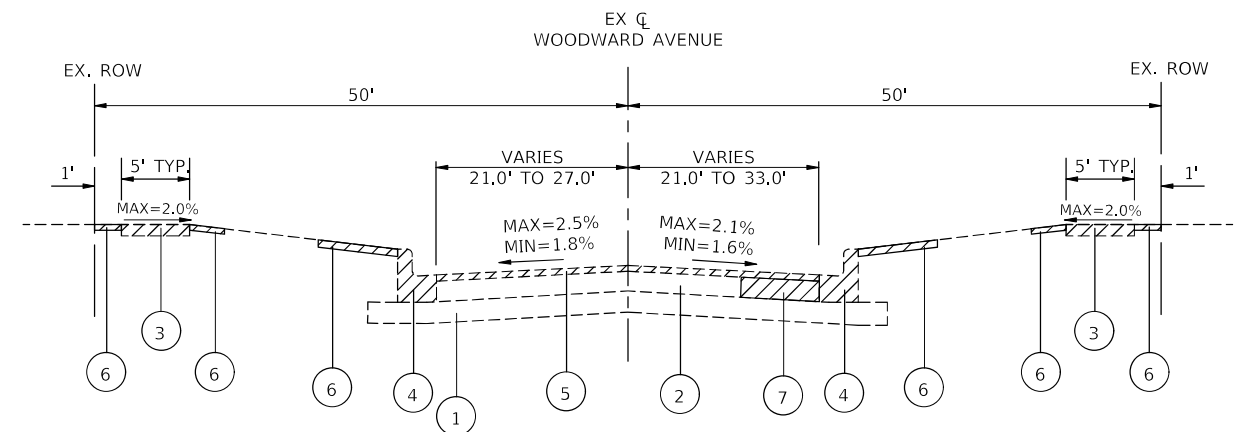
EXISTING TYPICAL SECTION

STA. 10+33.30 TO STA. 15+74.17, WOODWARD AVENUE



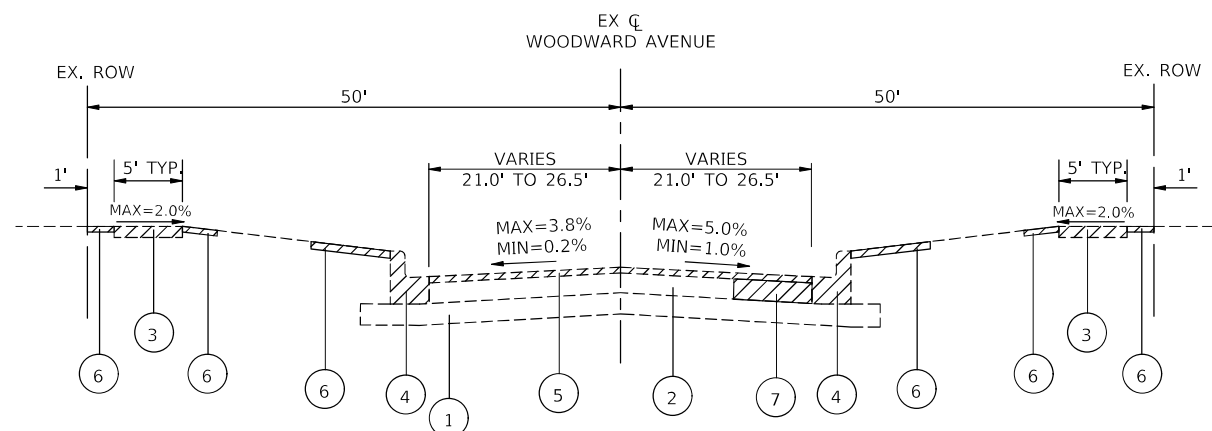
EXISTING TYPICAL SECTION

STA. 5+49.03 TO STA. 7+98.42, WOODWARD AVENUE



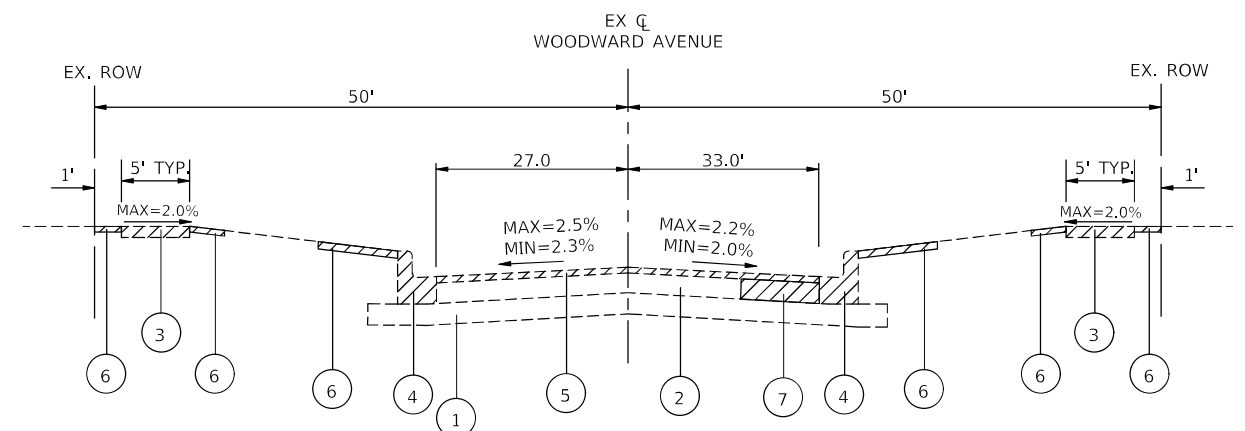
EXISTING TYPICAL SECTION - TAPER SECTION

STA. 21+49.15 TO STA. 24+19.98, WOODWARD AVENUE



EXISTING TYPICAL SECTION - TAPER SECTION

STA. 7+98.42 TO STA. 10+33.30, WOODWARD AVENUE
 STA. 15+74.17 TO STA. 18+27.79, WOODWARD AVENUE



EXISTING TYPICAL SECTION

STA. 24+19.98 TO STA. 25+46.93, WOODWARD AVENUE

LEGEND

- ① EXISTING SUBGRADE
- ② EXISTING HMA BASE, 8", VARIES
- ③ EXISTING PORTLAND CEMENT CONCRETE SIDEWALK REMOVAL WHERE SHOWN ON PLANS AND AS DETERMINED IN THE FIELD BY ENGINEER
- ④ EXISTING COMBINATION CONCRETE CURB & GUTTER, TYPE B6.12 REMOVAL WHERE SHOWN ON PLANS
- ⑤ EXISTING HMA SURFACE REMOVAL, 2"
- ⑥ EXISTING TURF RESTORATION
- ⑦ EXISTING BASE REMOVAL FOR CLASS D PATCH (LOCATION AND DIMENSIONS DETERMINED BY ENGINEER)

LEGEND

REMOVAL ITEMS (WHERE SHOWN ON PLANS OR AS DETERMINED IN THE FIELD BY ENGINEER)

**STATE OF ILLINOIS
 DEPARTMENT OF TRANSPORTATION**

EXISTING TYPICAL SECTIONS

FILE NAME =	USER NAME - USER	DESIGNED - NRH	REVISED
FILE NAME =		DRAWN - NRH	REVISED
	PLOT SCALE -	CHECKED - SWG	REVISED
	PLOT DATE - 01/09/22	DATE - 01/09/22	REVISED

NOT TO SCALE SHEET NO. 1 OF 1 SHEETS STA. TO STA.

F.A.U. RTE.	SECTION	COUNTY	TOTAL SHEETS	SHEET NO.
2593 21-00115-00-RS	DUPAGE	ILLINOIS	24	7
CONTRACT NO. 61J41				
FED. AID PROJECT				



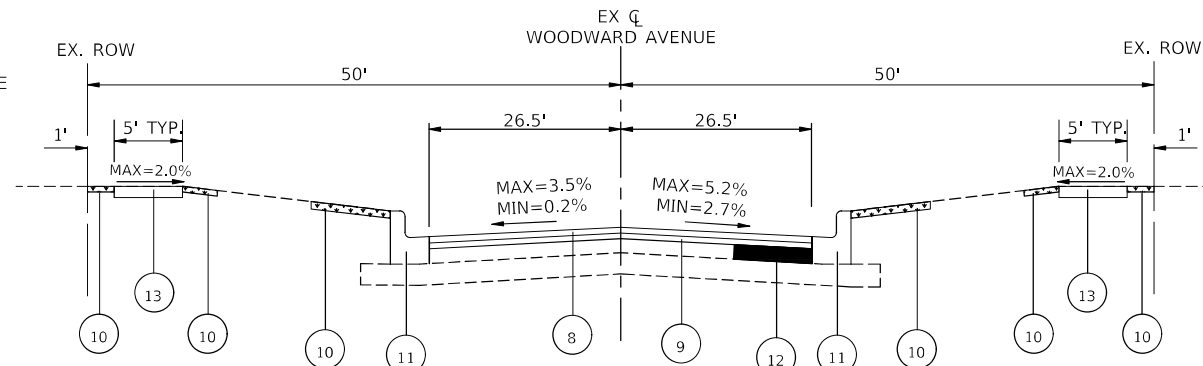
PROPOSED TYPICAL SECTION

STA. 0+74.70 TO STA. 5+49.03, WOODWARD AVENUE
 STA. 18+27.79 TO STA. 21+49.15, WOODWARD AVENUE



PROPOSED TYPICAL SECTION - TAPER SECTION

STA. 21+49.15 TO STA. 24+19.98, WOODWARD AVENUE



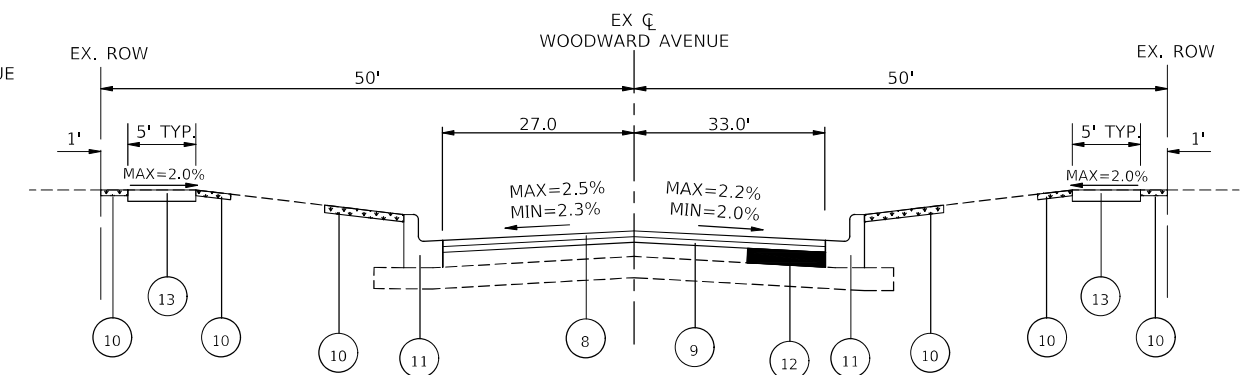
PROPOSED TYPICAL SECTION

STA. 10+33.30 TO STA. 15+74.17, WOODWARD AVENUE



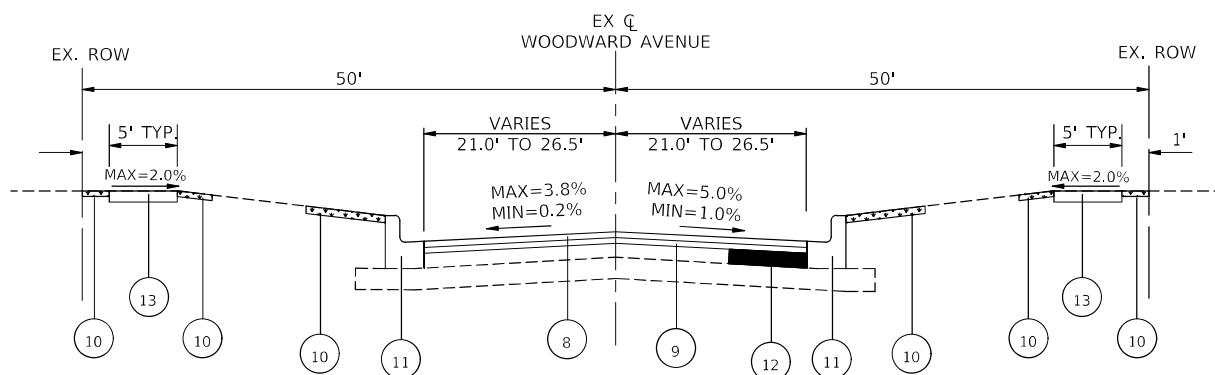
PROPOSED TYPICAL SECTION

STA. 5+49.03 TO STA. 7+98.42, WOODWARD AVENUE



PROPOSED TYPICAL SECTION

STA. 24+19.98 TO STA. 25+46.93, WOODWARD AVENUE



PROPOSED TYPICAL SECTION - TAPER SECTION

STA. 7+98.42 TO STA. 10+33.30, WOODWARD AVENUE
 STA. 15+74.17 TO STA. 18+27.79, WOODWARD AVENUE

LEGEND

- ⑧ PROPOSED HMA SURFACE COURSE, IL-9.5, MIX "D", N70, 1 1/2"
- ⑨ PROPOSED POLYMERIZED HMA BINDER COURSE, IL-4.75, N50, 3/4"
- ⑩ PROPOSED SODDING, SALT TOLERANT & TOP SOIL FURNISH AND PLACE, 4" (LOCATIONS DETERMINED BY ENGINEER)
- ⑪ PROPOSED COMBINATION CONCRETE CURB & GUTTER, TYPE B6.12 REPLACEMENT, WHERE SHOWN ON PLANS AND AS DETERMINED IN THE FIELD BY ENGINEER
- ⑫ CLASS D PATCH (LOCATION AND DIMENSIONS DETERMINED BY ENGINEER), 8"
- ⑬ PROPOSED PORTLAND CEMENT CONCRETE SIDEWALK 5 INCH, SPECIAL, WHERE SHOWN ON PLAN AND AS DETERMINED IN THE FIELD BY ENGINEER

LEGEND

- CLASS D PATCH
- TURF RESTORATION

MIXTURES TABLE

MIXTURE TYPE	AIR VOIDS @ Ndesign	QMP
PAVEMENT RESURFACING:		
HOT-MIX ASPHALT SURFACE COURSE, IL-9.5, MIX "D", N70, 1 1/2"	4% @ 70 Gyr.	LR 1030-2
POLYMERIZED HOT-MIX ASPHALT BINDER COURSE, IL-4.75, N50, 3/4"	3.5% @ 50 Gyr.	LR 1030-2
HMA DRIVEWAY PAVEMENT 3":		
HOT-MIX ASPHALT SURFACE COURSE, IL-9.5, MIX "D" N50 - 3" (IN 2 LIFTS)	4% @ 50 Gyr.	LR 1030-2
PATCHING:		
CLASS D PATCHES, (HMA BINDER, IL-19.0) 8"	4% @ 70 Gyr.	LR 1030-2

QMP DESIGNATION: QUALITY CONTROL/QUALITY ASSURANCE (QC/QA)
 PER LR 1030-02

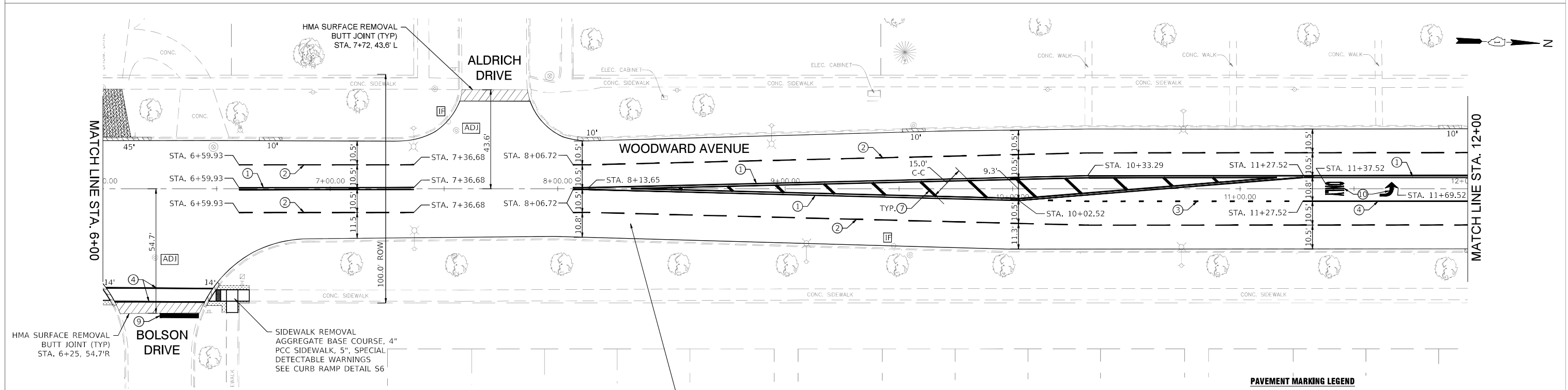
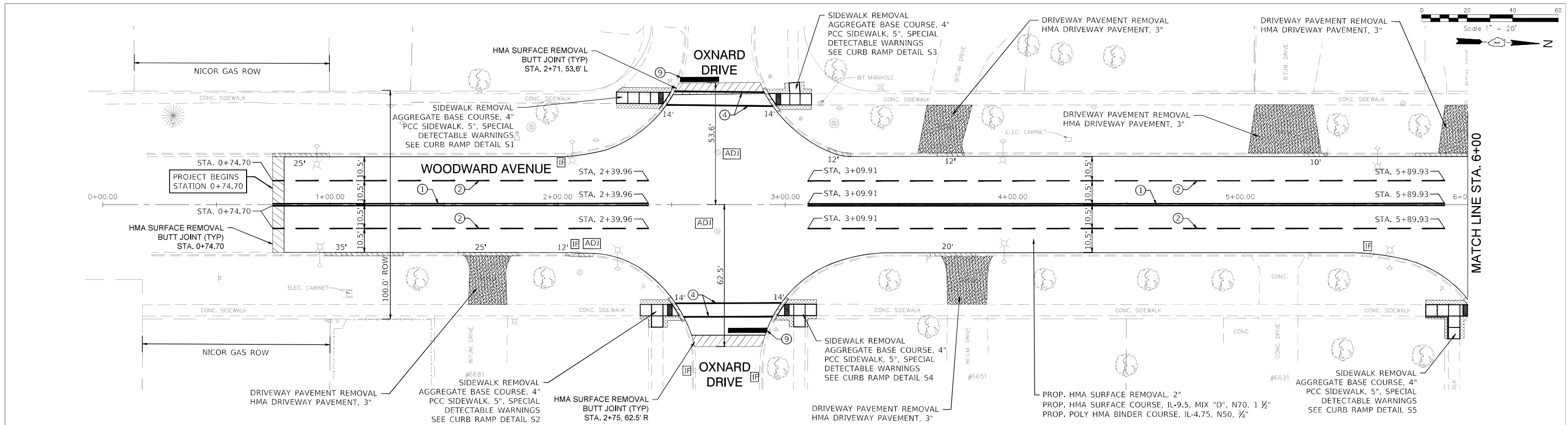
CONTRACTOR SHALL MILL FIRST BEFORE PATCHING

-THE UNIT WEIGHT USED TO CALCULATE ALL HMA SURFACE MIXTURE QUANTITIES IS 112 LBS/SQYD/IN.

-THE "AC TYPE" FOR POLYMERIZED HMA MIXES SHALL BE "SBS/SBR PG 76 - 22" AND FOR NON-POLYMERIZED HMA THE "AC TYPE" SHALL BE "PG 64 - 22" UNLESS MODIFIED BY RECLAIMED MATERIALS SPECIFICATIONS.

FILE NAME =	USER NAME - USER	DESIGNED - NRH	REVISED
FILE NAME =		DRAWN - NRH	REVISED
	PLOT SCALE -	CHECKED - SWG	REVISED
	PLOT DATE - 01/09/22	DATE - 01/09/22	REVISED

NOT TO SCALE	SHEET NO. 1 OF 1 SHEETS	STA. TO STA.	F.A.U. SECTION	COUNTY	TOTAL SHEETS	SHEET NO.
			259321-00115-00-RS	DuPAGE	24	8
			CONTRACT NO. 61J41			
			ILLINOIS	FED. AID PROJECT		



- NOTES**
- CLASS D PATCHES, 8" AS DIRECTED BY THE ENGINEER.
 - ALL EXISTING DRAINAGE STRUCTURES WHICH ARE TO BE ADJUSTED SHALL BE CLEANED IN ACCORDANCE WITH ARTICLE 602.15 OF THE STANDARD SPECIFICATIONS.
 - TOPSOIL, SODDING LOCATION/PLACEMENT AS DIRECTED BY THE ENGINEER.

PROP. HMA SURFACE REMOVAL, 2"
 PROP. HMA SURFACE COURSE, IL-9.5, MIX "D", N70, 1 1/2"
 PROP. POLY HMA BINDER COURSE, IL-4.75, N50, 3/4"

PROJECT STATION LIMITS
 PROJECT BEGINS STA. 0+74.70
 PROJECT ENDS STA. 25+46.93

- LEGEND**
- [Symbol] REMOVE & REPLACE ADA RAMP
 - [Symbol] DRAINAGE & UTILITY STRUCTURES TO BE ADJUSTED
 - [Symbol] INLET FILTERS
 - [Symbol] TOPSOIL, SOD RESTORATION
 - [Symbol] REMOVE & REPLACE EXISTING CURB AND GUTTER
 - [Symbol] REMOVE & REPLACE HMA DRIVEWAY
 - [Symbol] CLASS D PATCH, 8"
 - [Symbol] PROP. HMA SURFACE COURSE, MIX "D", N70, 2"
- PAVEMENT MARKING LEGEND**
- 4" DOUBLE YELLOW THERMOPLASTIC LINE @ 11" C-C - SOLID
 - 4" WHITE THERMOPLASTIC LINE - 10' DASH 30' SKIP
 - 6" WHITE THERMOPLASTIC LINE - 2' DASH 6' SKIP
 - 6" WHITE THERMOPLASTIC LINE - SOLID
 - 8" WHITE THERMOPLASTIC LINE - SOLID
 - 8" WHITE THERMOPLASTIC LINE - 3' DASH 9' SKIP
 - 12" YELLOW THERMOPLASTIC LINE - SOLID
 - 12" WHITE THERMOPLASTIC LINE - SOLID
 - 24" WHITE THERMOPLASTIC LINE - SOLID
 - LETTERS AND SYMBOLS - FULL SIZE

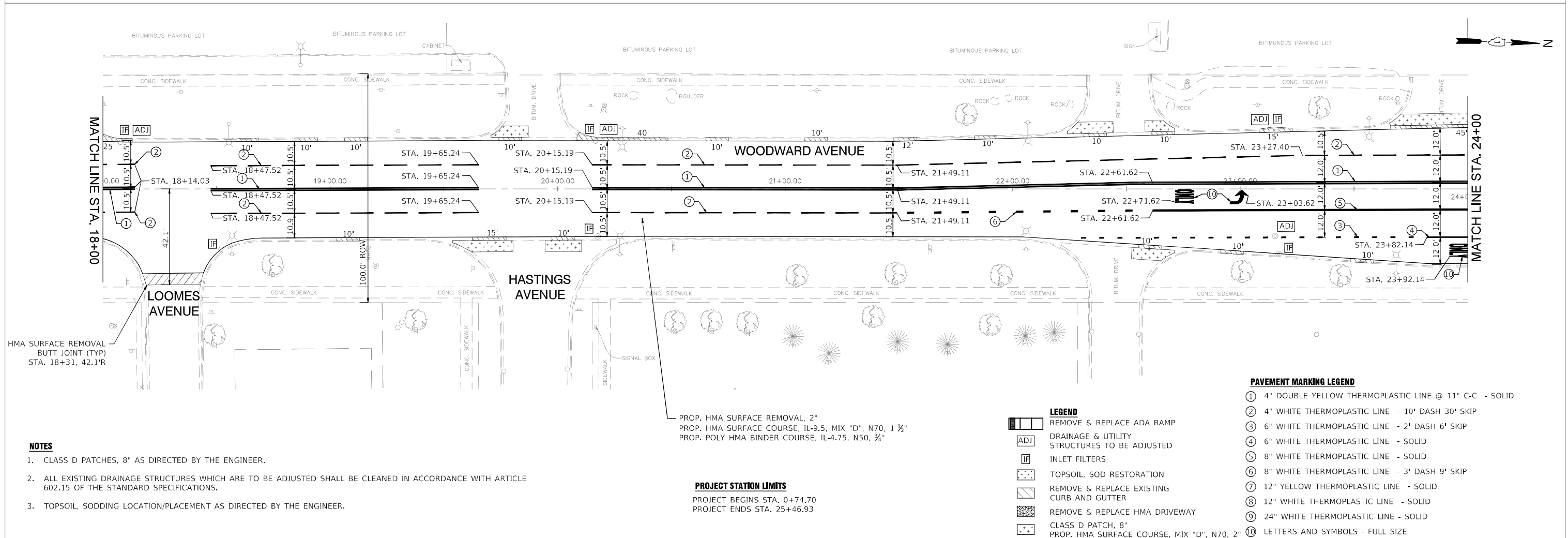
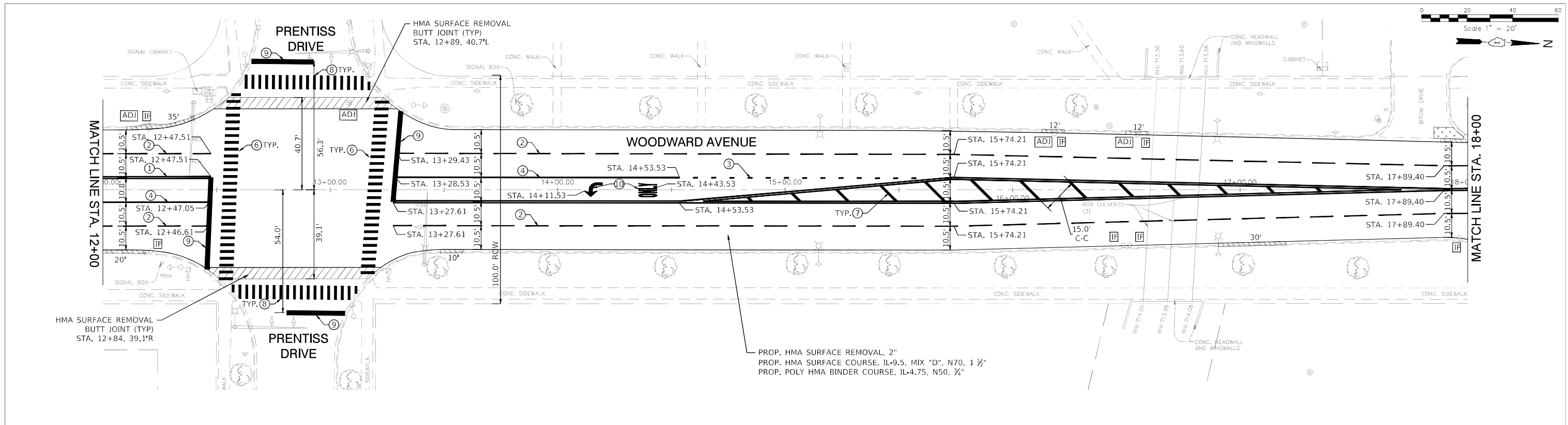
FILE NAME =	USER NAME -- USER	DESIGNED -- NRH	REVISED
FILE NAME =		DRAWN -- NRH	REVISED
	PLOT SCALE --	CHECKED -- SWG	REVISED
	PLOT DATE -- 01/30/22	DATE -- 01/30/22	REVISED

**STATE OF ILLINOIS
 DEPARTMENT OF TRANSPORTATION**

PLAN SHEET (STA. 0+00 TO STA. 12+00)

SCALE: 1"=20' SHEET NO. 1 OF 3 SHEETS STA. 0+00 TO STA. 12+00

F.A.U. RTE.	SECTION	COUNTY	TOTAL SHEETS	SHEET NO.
259321	00115-00-RS	DuPAGE	24	9
ILLINOIS			CONTRACT NO. 61J41	
			FED. AID PROJECT	



- NOTES**
- CLASS D PATCHES, 8" AS DIRECTED BY THE ENGINEER.
 - ALL EXISTING DRAINAGE STRUCTURES WHICH ARE TO BE ADJUSTED SHALL BE CLEANED IN ACCORDANCE WITH ARTICLE 602.15 OF THE STANDARD SPECIFICATIONS.
 - TOPSOIL, SODDING LOCATION/PLACEMENT AS DIRECTED BY THE ENGINEER.

PROP. HMA SURFACE REMOVAL, 2"
 PROP. HMA SURFACE COURSE, IL-9.5, MIX "D", N70, 1 1/2"
 PROP. POLY HMA BINDER COURSE, IL-4.75, N50, 3/4"

PROJECT STATION LIMITS
 PROJECT BEGINS STA. 0+74.70
 PROJECT ENDS STA. 25+46.93

- LEGEND**
- [Symbol] REMOVE & REPLACE ADA RAMP
 - [Symbol] DRAINAGE & UTILITY STRUCTURES TO BE ADJUSTED
 - [Symbol] INLET FILTERS
 - [Symbol] TOPSOIL, SOD RESTORATION
 - [Symbol] REMOVE & REPLACE EXISTING CURB AND GUTTER
 - [Symbol] REMOVE & REPLACE HMA DRIVEWAY
 - [Symbol] CLASS D PATCH, 8"
 - [Symbol] PROP. HMA SURFACE COURSE, MIX "D", N70, 2"
- PAVEMENT MARKING LEGEND**
- 4" DOUBLE YELLOW THERMOPLASTIC LINE @ 11" C-C - SOLID
 - 4" WHITE THERMOPLASTIC LINE - 10' DASH 30' SKIP
 - 6" WHITE THERMOPLASTIC LINE - 2' DASH 6' SKIP
 - 6" WHITE THERMOPLASTIC LINE - SOLID
 - 8" WHITE THERMOPLASTIC LINE - SOLID
 - 8" WHITE THERMOPLASTIC LINE - 3' DASH 9' SKIP
 - 12" YELLOW THERMOPLASTIC LINE - SOLID
 - 12" WHITE THERMOPLASTIC LINE - SOLID
 - 24" WHITE THERMOPLASTIC LINE - SOLID
 - LETTERS AND SYMBOLS - FULL SIZE

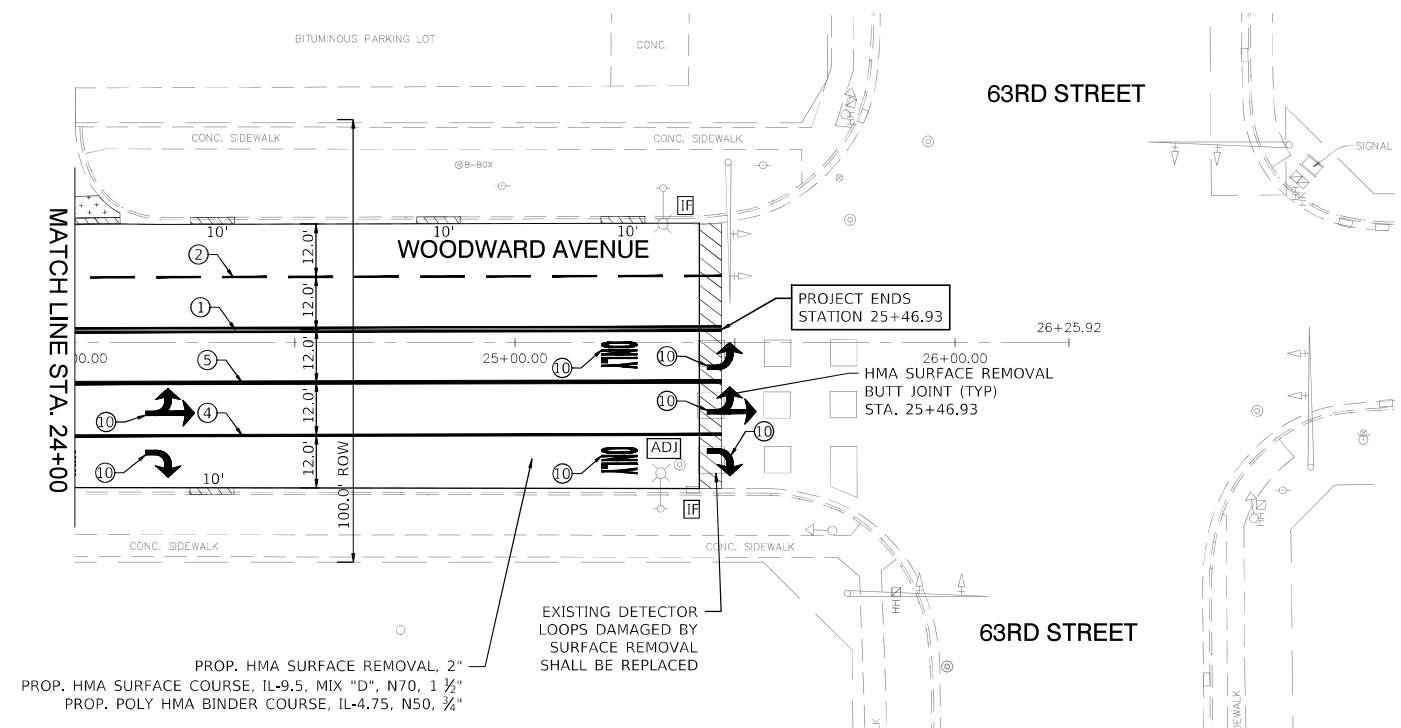
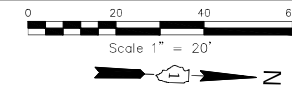
FILE NAME =	USER NAME -- USER	DESIGNED -- NRH	REVISED
FILE NAME =		DRAWN -- NRH	REVISED
	PLOT SCALE --	CHECKED -- SWG	REVISED
	PLOT DATE -- 01/30/22	DATE -- 01/30/22	REVISED

**STATE OF ILLINOIS
 DEPARTMENT OF TRANSPORTATION**

PLAN SHEET (STA. 12+00 TO STA. 24+00)

SCALE: 1"=20' SHEET NO. 2 OF 3 SHEETS STA. 12+00 TO STA. 24+00

F.A.U. RTE.	SECTION	COUNTY	TOTAL SHEETS	SHEET NO.
259321	00115-00-RS	DuPAGE	24	10
ILLINOIS			CONTRACT NO. 61J41	
FED. AID PROJECT				



PROP. HMA SURFACE REMOVAL, 2"
 PROP. HMA SURFACE COURSE, IL-9.5, MIX "D", N70, 1 1/2"
 PROP. POLY HMA BINDER COURSE, IL-4.75, N50, 3/4"

EXISTING DETECTOR
 LOOPS DAMAGED BY
 SURFACE REMOVAL
 SHALL BE REPLACED

NOTES

1. CLASS D PATCHES, 8" AS DIRECTED BY THE ENGINEER.
2. ALL EXISTING DRAINAGE STRUCTURES WHICH ARE TO BE ADJUSTED SHALL BE CLEANED IN ACCORDANCE WITH ARTICLE 602.15 OF THE STANDARD SPECIFICATIONS.
3. TOPSOIL, SODDING LOCATION/PLACEMENT AS DIRECTED BY THE ENGINEER.

PROJECT STATION LIMITS
 PROJECT BEGINS STA. 0+74.70
 PROJECT ENDS STA. 25+46.93

LEGEND

	REMOVE & REPLACE ADA RAMP
	DRAINAGE & UTILITY STRUCTURES TO BE ADJUSTED
	INLET FILTERS
	TOPSOIL, SOD RESTORATION
	REMOVE & REPLACE EXISTING CURB AND GUTTER
	REMOVE & REPLACE HMA DRIVEWAY
	CLASS D PATCH, 8"
	PROP. HMA SURFACE COURSE, MIX "D", N70, 2"

PAVEMENT MARKING LEGEND

- ① 4" DOUBLE YELLOW THERMOPLASTIC LINE @ 11" C-C - SOLID
- ② 4" WHITE THERMOPLASTIC LINE - 10' DASH 30' SKIP
- ③ 6" WHITE THERMOPLASTIC LINE - 2' DASH 6' SKIP
- ④ 6" WHITE THERMOPLASTIC LINE - SOLID
- ⑤ 8" WHITE THERMOPLASTIC LINE - SOLID
- ⑥ 8" WHITE THERMOPLASTIC LINE - 3' DASH 9' SKIP
- ⑦ 12" YELLOW THERMOPLASTIC LINE - SOLID
- ⑧ 12" WHITE THERMOPLASTIC LINE - SOLID
- ⑨ 24" WHITE THERMOPLASTIC LINE - SOLID
- ⓪ LETTERS AND SYMBOLS - FULL SIZE

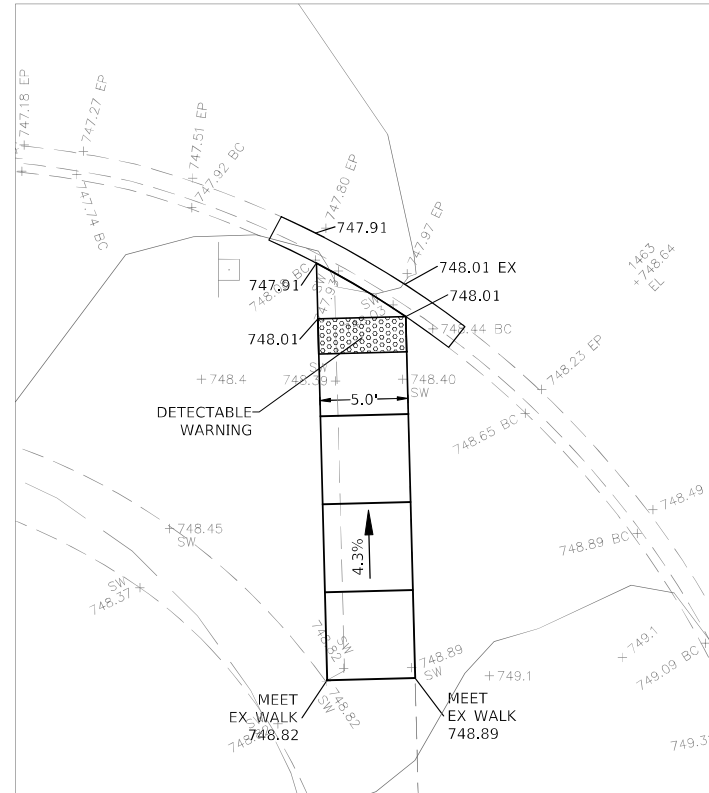
FILE NAME =	USER NAME -- USER	DESIGNED -- NRH	REVISED
FILE NAME =		DRAWN -- NRH	REVISED
	PLOT SCALE --	CHECKED -- SWG	REVISED
	PLOT DATE -- 01/30/22	DATE -- 01/30/22	REVISED

**STATE OF ILLINOIS
 DEPARTMENT OF TRANSPORTATION**

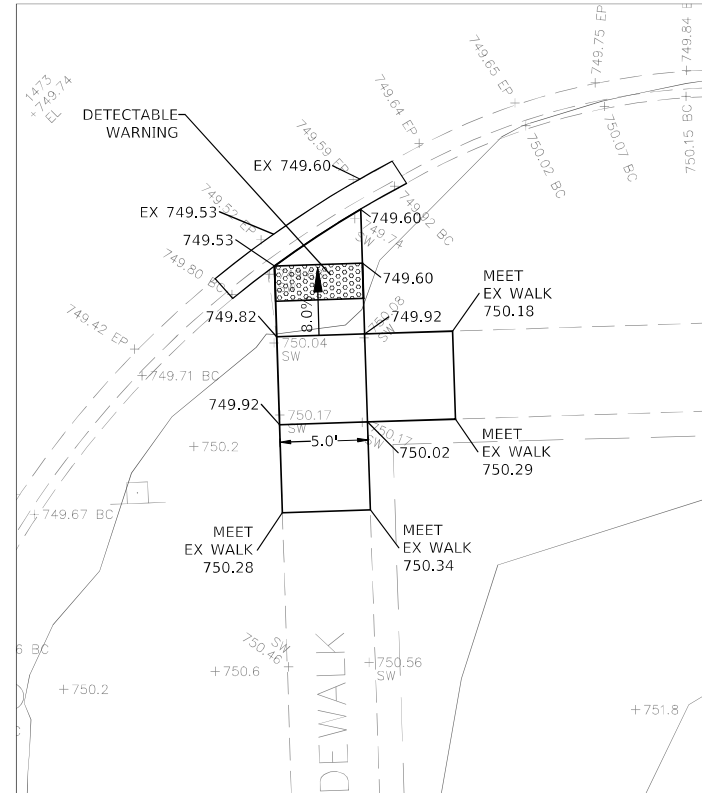
PLAN SHEET (STA. 24+00 TO STA. 26+25.92)

SCALE: 1"=20' SHEET NO. 3 OF 3 SHEETS STA. 24+00 TO STA. 26+25.92

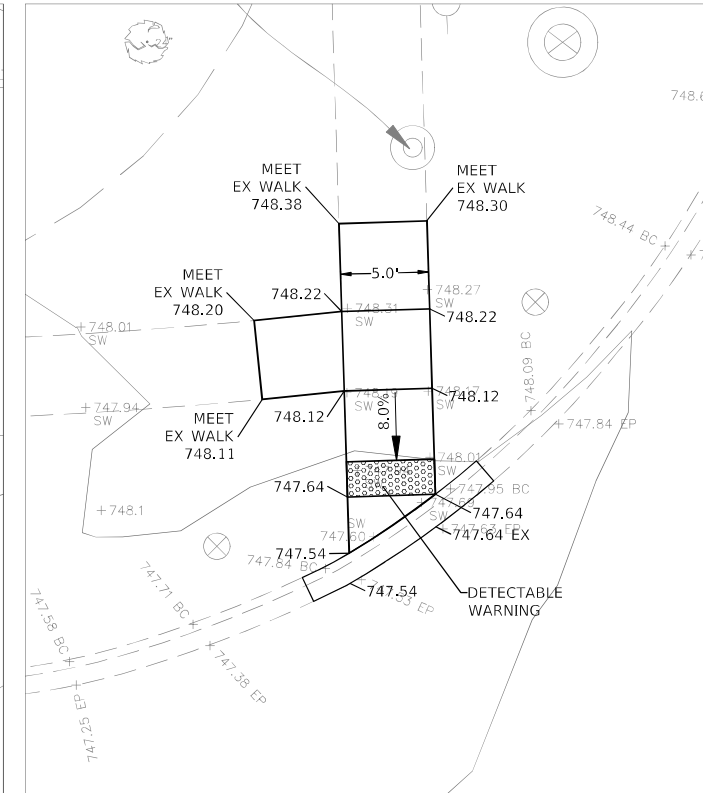
F.A.U. RTE.	SECTION	COUNTY	TOTAL SHEETS	SHEET NO.
2593	21-00115-00-RS	DuPAGE	24	11
ILLINOIS			CONTRACT NO. 61J41	
			FED. AID PROJECT	



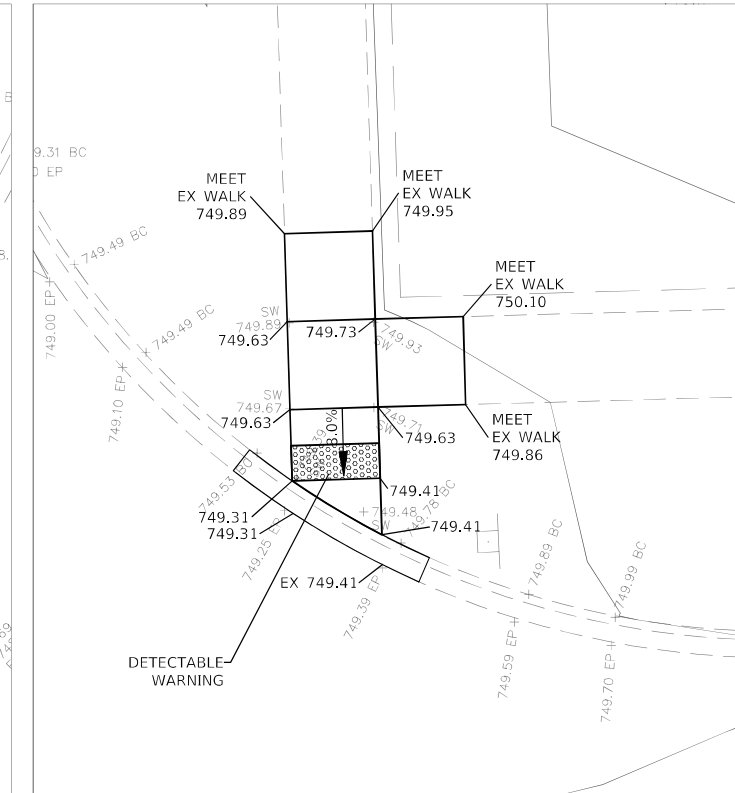
**CURB RAMP DETAIL S1
STA. 2+44 - LEFT SIDE**



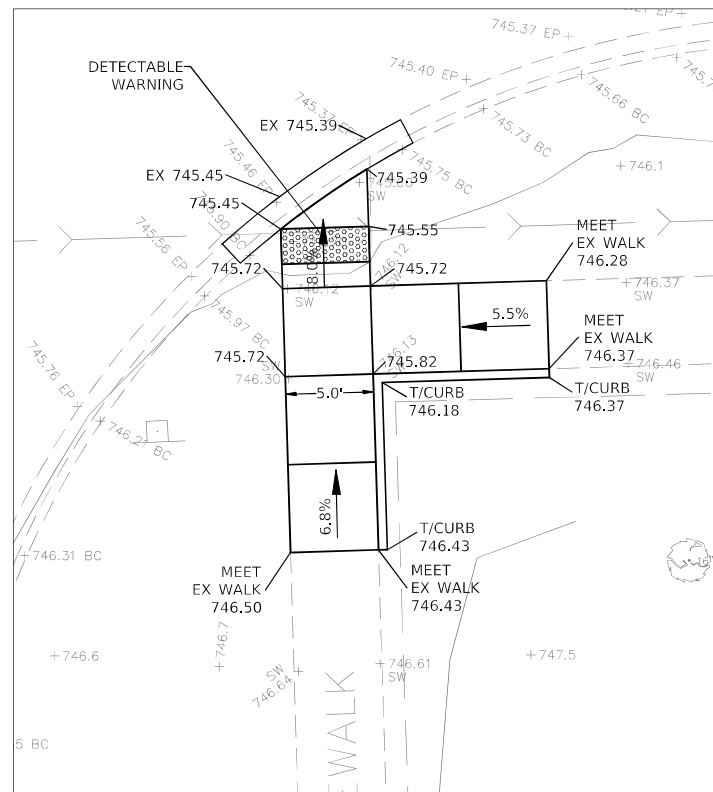
**CURB RAMP DETAIL S2
STA. 2+44 - RIGHT SIDE**



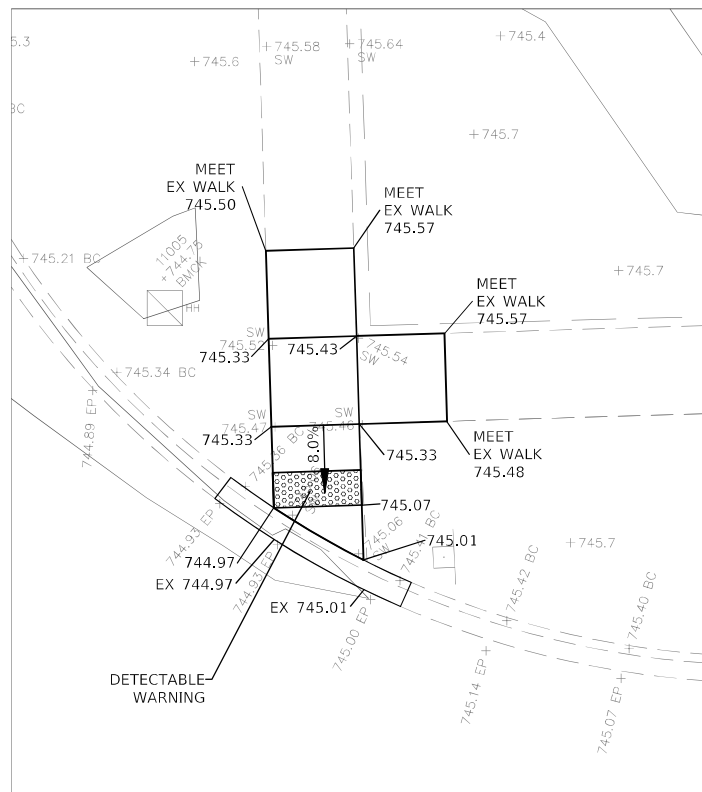
**CURB RAMP DETAIL S3
STA. 3+05 - LEFT SIDE**



**CURB RAMP DETAIL S4
STA. 3+05 - RIGHT SIDE**



**CURB RAMP DETAIL S5
STA. 5+94 - RIGHTT SIDE**



**CURB RAMP DETAIL S6
STA. 6+57 - RIGHT SIDE**

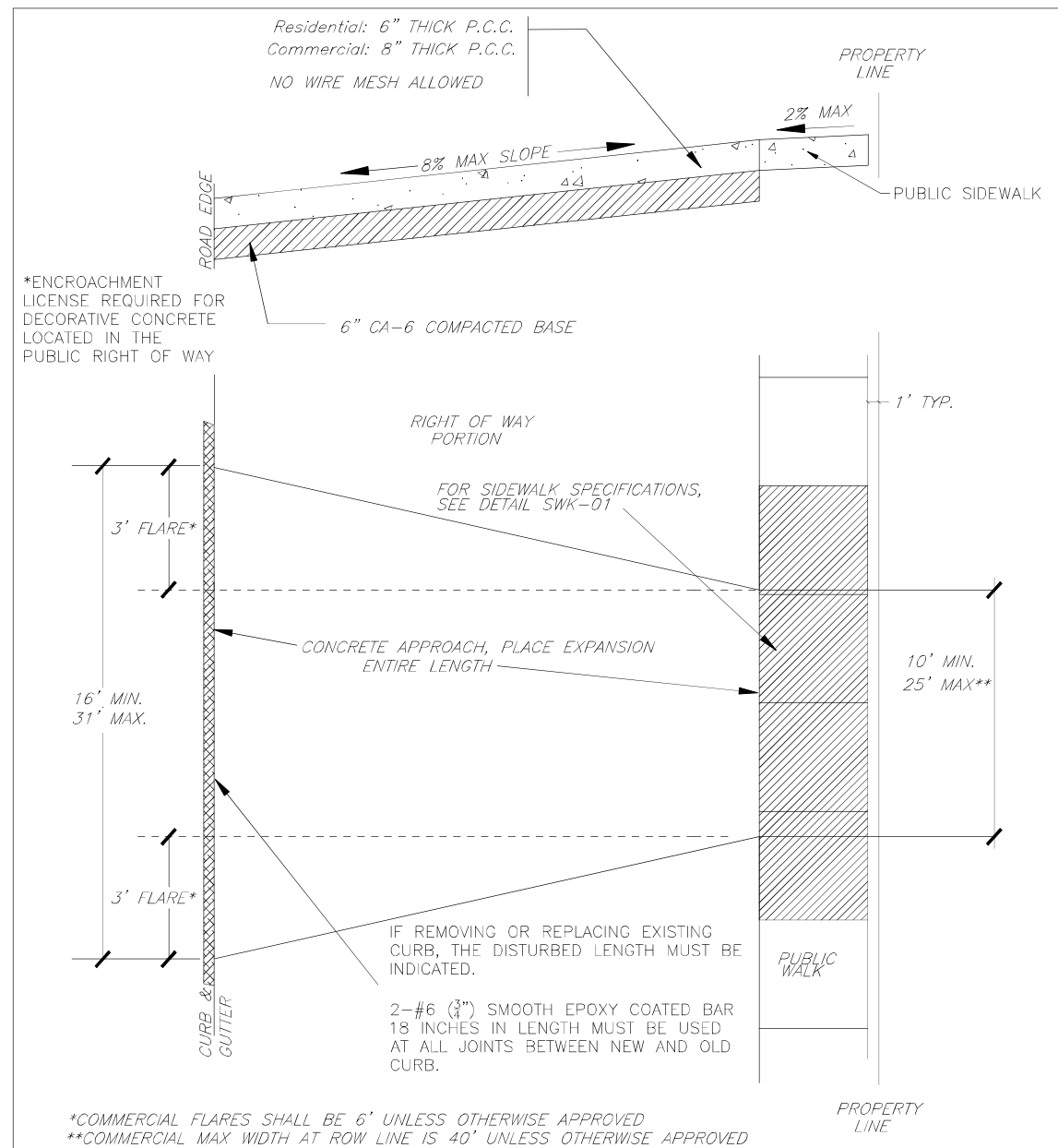
**STATE OF ILLINOIS
DEPARTMENT OF TRANSPORTATION**

CURB RAMP DETAILS (S1 TO S6)

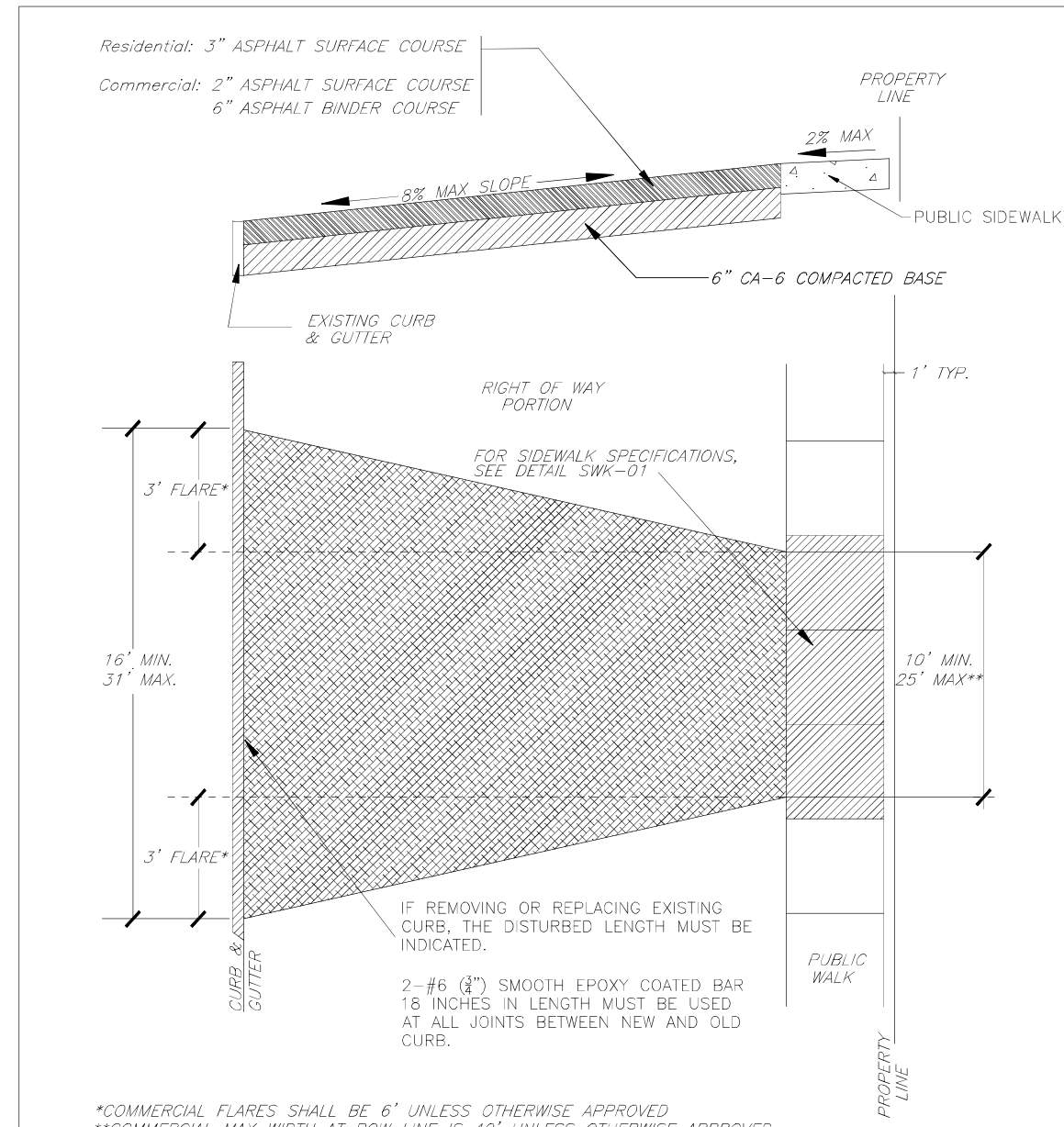
FILE NAME =	USER NAME - USER	DESIGNED - NRH	REVISED
FILE NAME =		DRAWN - NRH	REVISED
		CHECKED - SWG	REVISED
PLOT SCALE -		DATE - 01/09/22	REVISED
PLOT DATE - 01/09/22			

SCALE: 1"=5' SHEET NO. 1 OF 1 SHEETS STA. TO STA.

F.A.U. RTE.	SECTION	COUNTY	TOTAL SHEETS	SHEET NO.
259321-00115-00-RS	DuPAGE	24	12	
CONTRACT NO. 61J41				
ILLINOIS FED. AID PROJECT				



N.T.S.	DATE	REVISIONS	DRAWN BY	APPVD BY	STANDARD DETAIL
	03/02/20		N.R.H.	J.M.W.	CONCRETE APPROACH WITH CURB
DRAWING NO. PVT-09					
I:\LIBRARY\DETAILS\PAVEMENT\PVT-09					



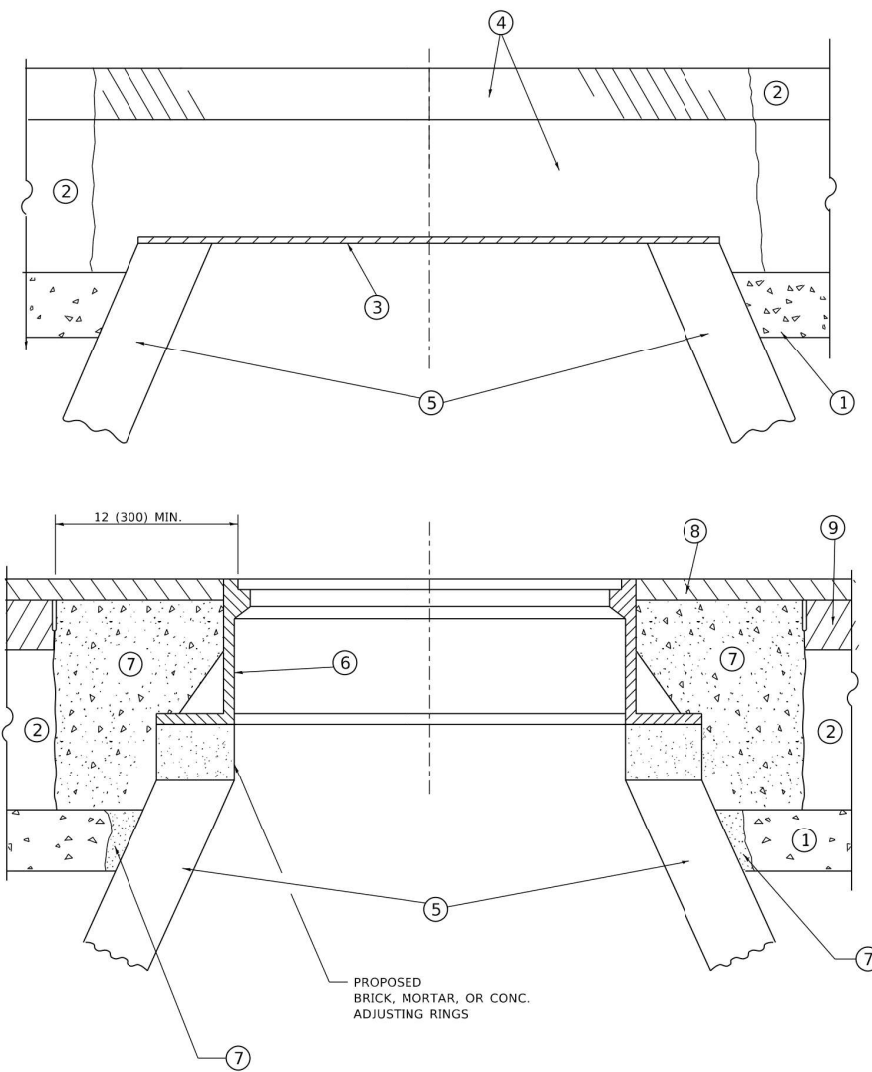
N.T.S.	DATE	REVISIONS	DRAWN BY	APPVD BY	STANDARD DETAIL
	01/01/19		N.R.H.	J.M.W.	ASPHALT APPROACH WITH CURB
DRAWING NO. PVT-03					
I:\LIBRARY\DETAILS\PAVEMENT\PVT-03					

FILE NAME =	USER NAME -- USER	DESIGNED -- NRH	REVISED
FILE NAME =		DRAWN -- NRH	REVISED
	PLOT SCALE --	CHECKED -- SWG	REVISED
	PLOT DATE -- 01/09/22	DATE -- 01/09/22	REVISED

**STATE OF ILLINOIS
DEPARTMENT OF TRANSPORTATION**

VILLAGE DETAILS	
NOT TO SCALE	SHEET NO. 1 OF 2 SHEETS
STA. TO STA.	

F.A.U. RTE.	SECTION	COUNTY	TOTAL SHEETS	SHEET NO.
2593	21-00115-00-RS	DuPAGE	24	13
CONTRACT NO. 61J41				
ILLINOIS FED. AID PROJECT				



DETAILS FOR FRAMES AND LIDS ADJUSTMENT WITH MILLING

NOTES

- EXISTING BROKEN FRAMES AND LIDS SHALL BE REMOVED AND DISPOSED OF BY THE CONTRACTOR AND SHALL BE REPLACED AS DIRECTED BY THE ENGINEER. REPLACEMENT FRAMES AND LIDS WILL BE PAID FOR IN ACCORDANCE WITH ARTICLE 109.04 OF THE STANDARD SPECIFICATIONS UNLESS A SEPARATE PAY ITEM HAS BEEN PROVIDED.
- IF THE EXISTING LIDS ARE OPEN, THE FRAME WILL BE ADJUSTED TO THE ELEVATION OF THE MILLED PAVEMENT SURFACE PRIOR TO THE MILLING OPERATION. THE FRAME WILL NOT BE REMOVED AND COVERED BY THE METAL PLATE.
- CITY OF CHICAGO CASTINGS ARE THE PROPERTY OF THE CITY AND THE CONTRACTOR SHALL NOTIFY THE CITY FOR REMOVAL AND DISPOSITION OF THE CASTINGS.
- THE METAL PLATE USED TO COVER THE STRUCTURE SHALL REMAIN THE PROPERTY OF THE CONTRACTOR.

CONSTRUCTION PROCEDURES

- STAGE 1 (BEFORE PAVEMENT MILLING)**
- REMOVE A MINIMUM OF 12 (300) OF THE PAVEMENT FROM AROUND THE STRUCTURE.
 - REMOVE THE EXISTING FRAME AND LID FROM THE STRUCTURE.
 - COVER THE STRUCTURE OPENING WITH A 36 (900) DIAMETER METAL PLATE.
 - BACKFILL WITH CRUSHED STONE AND HMA SURFACE MIX APPROVED BY THE ENGINEER. (MIN. 1 1/2 (40) HMA TO REMAIN AFTER MILLING).

- STAGE 2 (AFTER PAVEMENT MILLING)**
- REMOVE THE HMA SURFACE MIX AND CRUSHED STONE.
 - INSTALL THE FRAME AND LID; ADJUST THE FRAME TO ITS FINAL SURFACE ELEVATION.
 - THE SURROUNDING SPACE SHALL BE FILLED WITH CLASS*PP-1 CONCRETE TO THE ELEVATION OF THE SURFACE OF THE EXISTING BASE COURSE OR THE BINDER COURSE.
- * UNLESS OTHERWISE SPECIFIED IN THE PLANS.

THE PROCEDURE EXPLAINED ABOVE SHALL CONFORM TO THE APPLICABLE PORTIONS OF SECTIONS 353, 406, 602, AND 603 OF THE STANDARD SPECIFICATIONS EXCEPT THAT "THE CONTRACTOR SHALL ADJUST THE STRUCTURES TO THE FINISHED PAVEMENT ELEVATION NO MORE THAN 5 CALENDAR DAYS PRIOR TO PLACEMENT OF THE FINAL LIFT OF SURFACE UNLESS APPROVED BY THE ENGINEER."

LEGEND

- | | |
|--|-------------------------------|
| ① SUB-BASE GRANLLAR MATERIAL | ⑥ FRAME AND LID (SEE NOTES) |
| ② EXISTING PAVEMENT | ⑦ CLASS*PP-1 CONCRETE |
| ③ 36 (900) DIAMETER METAL PLATE | ⑧ PROPOSED HMA SURFACE COURSE |
| ④ PROPOSED CRUSHED STONE AND HMA SURFACE MIX | ⑨ PROPOSED HMA BINDER COURSE |
| ⑤ EXISTING STRUCTURE | |

LOCATION OF STRUCTURES

THE CONTRACTOR WILL BE REQUIRED TO KEEP A RECORD OF THE LOCATIONS OF THE BURIED STRUCTURES ACCORDING TO THE STATION AND DISTANCE LEFT OR RIGHT OF THE CENTERLINE OF PAVEMENT. UPON COMPLETION OF THE WORK, THE CONTRACTOR WILL DELIVER THE RECORD TO THE ENGINEER.

BASIS OF PAYMENT

- REMOVING FRAMES AND LIDS ON DRAINAGE AND UTILITY STRUCTURES IN THE PAVEMENT PRIOR TO MILLING, AND ADJUSTING TO FINAL GRADE PRIOR TO PLACING THE SURFACE COURSE, WILL BE PAID FOR AT THE CONTRACT UNIT PRICE EACH FOR "FRAMES AND LIDS TO BE ADJUSTED (SPECIAL)."
- THIS WORK WILL NOT BE PAID FOR WHEN DRAINAGE AND UTILITY STRUCTURES ARE SPECIFIED FOR PAYMENT AS STRUCTURE RECONSTRUCTION.
- NEW FRAMES AND LIDS, WHEN SPECIFIED, WILL BE PAID FOR SEPARATELY.
- WHEN STRUCTURES ARE TO BE ADJUSTED OR RECONSTRUCTED, THE LOWERING AND RAISING OF THE FRAMES AND LIDS WILL NOT BE PAID FOR SEPARATELY BUT WILL BE INCLUDED IN THE COST OF THE CORRESPONDING PAY ITEM.

ALL DIMENSIONS ARE IN INCHES (MILLIMETERS) UNLESS OTHERWISE SHOWN

MODEL: Default
FILE NAME: p:\work\paw_bentley.com\paw\DOT\Documents\DOT_Offices\Bhirc\1\Project\305154572-34\CAD\305154572-34\CAD\305154572-34.dgn

USER NAME = Lawrence.DeManche	DESIGNED - R. SHAH	REVISED - R. BORO 01-01-07
	DRAWN -	REVISED - R. BORO 03-09-11
PLOT SCALE = 100.0000 / 1 in.	CHECKED -	REVISED - R. BORO 12-06-11
PLOT DATE = 11/18/2022	DATE - 10-25-94	REVISED - K. SMITH 11-18-22

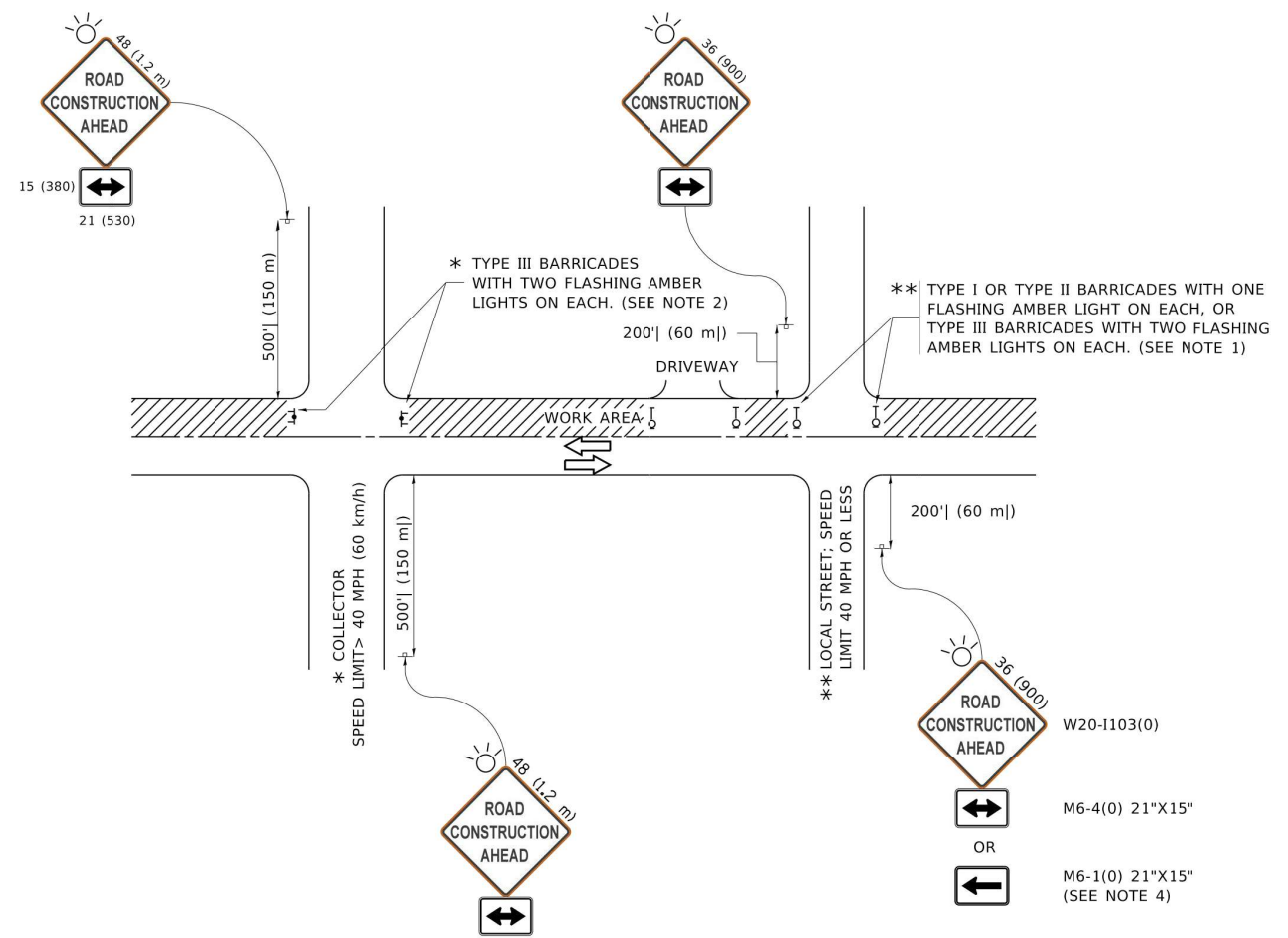
**STATE OF ILLINOIS
DEPARTMENT OF TRANSPORTATION**

**DETAILS FOR
FRAMES AND LIDS ADJUSTMENT WITH MILLING**

F.A.U. RTE. 2593	SECTION 21-00115-00-RS	COUNTY DuPAGE	TOTAL SHEETS 24	SHEET NO. 14
BD600-03 (BD-08)		CONTRACT NO. 61J41		
ILLINOIS FED. AID PROJECT				

SCALE: NONE SHEET 1 OF 1 SHEETS STA. TO STA.

MODEL: Default
 FILE NAME: p:\11084181\DOT\TEG\Illinois.gov\FWIDOT\Documents\DOT Offices\District_1\Projects\Dist5022x34\CAD\Bata\CAD\Sheet\TC10.dgn



NOTES:

1. SIDE ROAD WITH A SPEED LIMIT OF 40 MPH (60 km/h) OR LESS AS SHOWN ON THE DRAWING AND AS DIRECTED BY THE ENGINEER:
 - a) ONE "ROAD CONSTRUCTION AHEAD" SIGN 36 x 36 (900x900) WITH A FLASHER MOUNTED ON IT APPROXIMATELY 200' (60 m) IN ADVANCE OF THE MAIN ROUTE.
 - b) THE CLOSED PORTION OF THE MAIN ROUTE SHALL BE PROTECTED BY BLOCKING WITH TYPE I, TYPE II OR TYPE III BARRICADES, 1/3 OF THE CROSS SECTION OF THE CLOSED PORTION.
2. SIDE ROAD WITH A SPEED LIMIT GREATER THAN 40 MPH (60 km/h) AS SHOWN ON THE DRAWING AND AS DIRECTED BY THE ENGINEER:
 - a) ONE "ROAD CONSTRUCTION AHEAD" SIGN 48 x 48 (1.2 m x 1.2 m) WITH A FLASHER MOUNTED ON IT APPROXIMATELY 500' (150 m) IN ADVANCE OF THE MAIN ROUTE.
 - b) BLOCKING WITH TYPE III BARRICADES, 1/2 OF THE CROSS SECTION OF THE CLOSED PORTION.
3. CONES MAY BE SUBSTITUTED FOR BARRICADES OR DRUMS AT HALF THE SPACING DURING DAY OPERATIONS. CONES SHALL BE A MINIMUM OF 28 (7.10) IN HEIGHT.
4. SIGNING AND THE WORK ZONE, A SINGLE HEADED ARROW (M6-1) SHALL BE USED IN LIEU OF THE DOUBLE HEADED ARROW (M6-4).
5. WHEN WORK IS BEING PERFORMED ON A SIDE ROAD OR DRIVEWAY, FOLLOW THE APPLICABLE STANDARD(S). THE DIRECTIONAL ARROW (M6-1 OR M6-4) SHALL BE COVERED OR REMOVED WHEN NO LONGER CONSISTENT WITH THE TRAFFIC CONTROL SET-UP.
6. ADVANCE WARNING SIGNS ARE TO BE OMITTED ON DRIVEWAYS UNLESS OTHERWISE SPECIFIED IN THE PLANS OR BY THE ENGINEER.
7. THE TRAFFIC CONTROL AND PROTECTION FOR SIDE ROADS, INTERSECTIONS, AND DRIVEWAYS SHALL BE INCLUDED IN THE COST OF SPECIFIED TRAFFIC CONTROL STANDARDS OR ITEMS.

All dimensions are in inches (millimeters) unless otherwise shown.

	USER NAME = footemj	DESIGNED - L.H.A.	REVISED - A. HOUSEH 10-15-96	STATE OF ILLINOIS DEPARTMENT OF TRANSPORTATION	TRAFFIC CONTROL AND PROTECTION FOR SIDE ROADS, INTERSECTIONS, AND DRIVEWAYS	F.A.U. RTE. 2593	SECTION 21-00115-00-RS	COUNTY DuPAGE	TOTAL SHEETS 24	SHEET NO. 17	
	PLOT SCALE = 50.0000" / in.	CHECKED -	REVISED - T. RAMMACHER 01-06-00			SCALE: NONE	SHEET 1 OF 1 SHEETS	TC-10		CONTRACT NO. 61J41	
	PLOT DATE = 3/4/2019	DATE - 06-89	REVISED - A. SCHUETZE 07-01-13			STA. TO STA.		ILLINOIS FED AID PROJECT			
			REVISED - A. SCHUETZE 09-15-16								

TURN BAY ENTRANCE AT START OF LANE CLOSURE TAPER

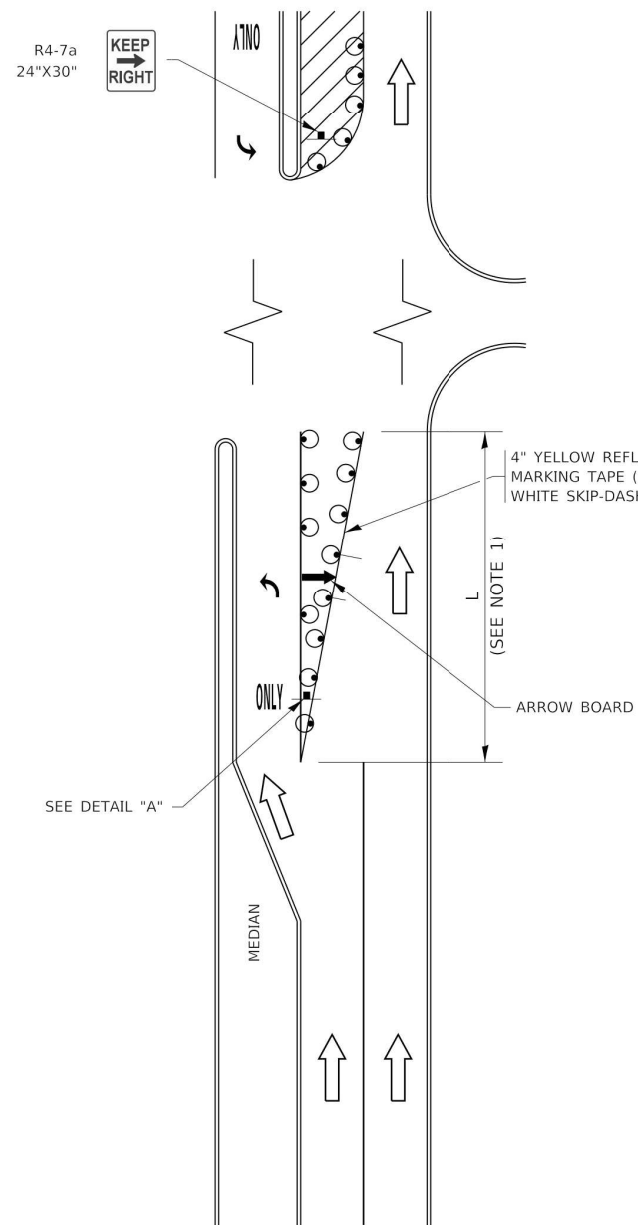


FIGURE 1

TURN BAY ENTRANCE WITHIN A LANE CLOSURE

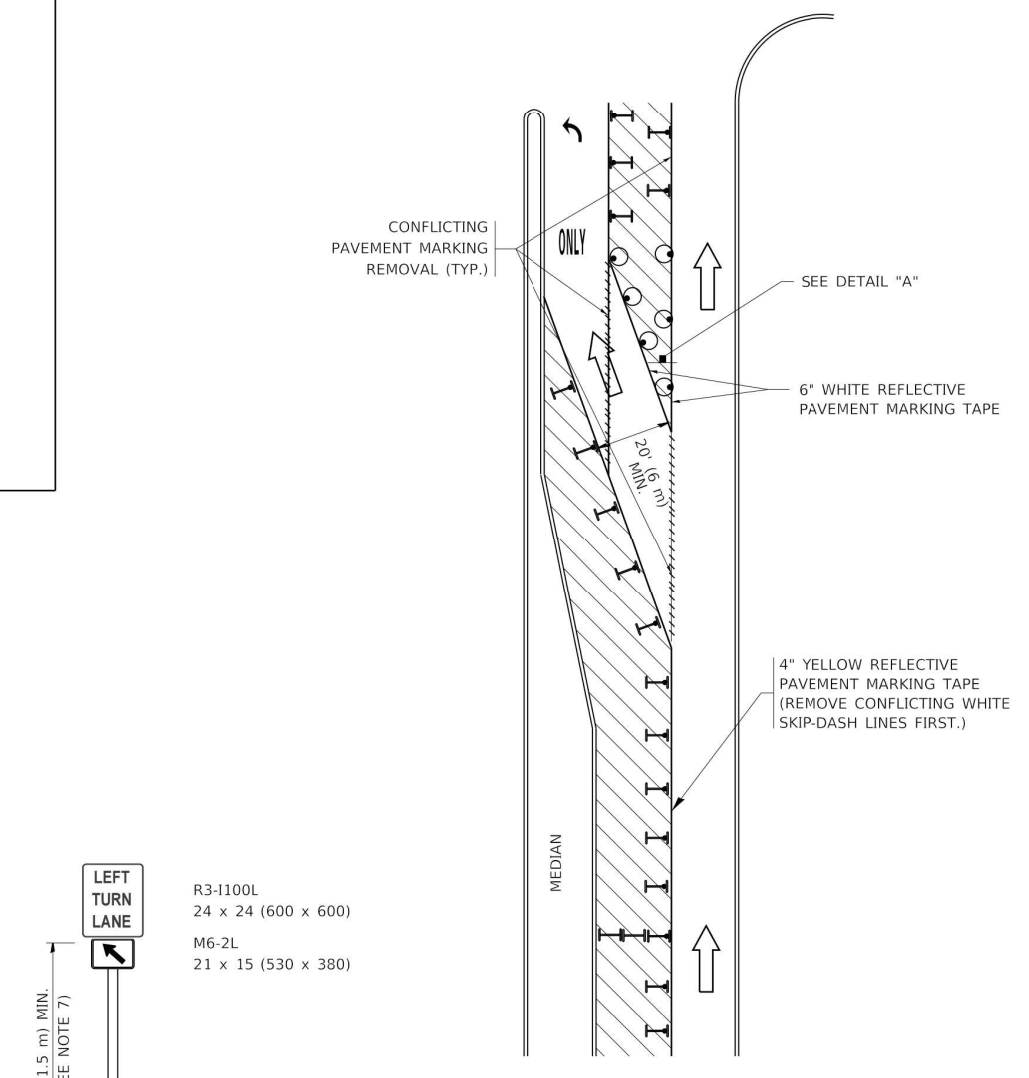


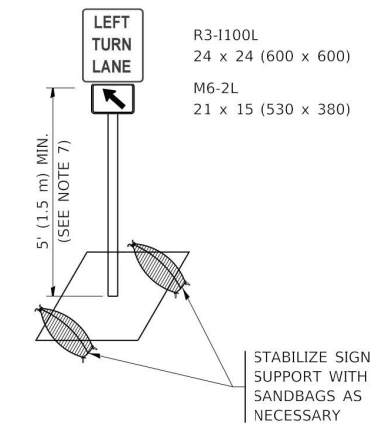
FIGURE 2

LEGEND

- WORK AREA
- LANE OPEN TO TRAFFIC
- ARROW BOARD
- TYPE I OR II BARRICADE OR DRUM WITH STEADY BURN LIGHT
- DRUM WITH STEADY BURN LIGHT
- SIGN ASSEMBLY
- TYPE I OR II CHECK BARRICADE WITH FLASHING LIGHT

NOTES:

1. A) WHEN "L" IS ≤ THE STORAGE LENGTH OF THE TURN LANE (AS SHOWN IN FIG. 1), USE FIGURE 1.
B) WHEN "L" IS > THE STORAGE LENGTH OF THE TURN LANE OR THE TURN LANE IS WITHIN THE LANE CLOSURE, USE FIGURE 2.
2. CONES MAY BE SUBSTITUTED FOR BARRICADES OR DRUMS AT HALF THE SPACING DURING DAY OPERATIONS. CONES SHALL BE A MINIMUM OF 28 (710) IN HEIGHT.
3. LIGHTS WILL NOT BE REQUIRED ON BARRICADES OR DRUMS FOR DAY OPERATIONS. ALL LIGHTS SHALL BE MONODIRECTIONAL.
4. REFLECTIVE TEMPORARY PAVEMENT MARKINGS SHALL BE PLACED THROUGHOUT THE BARRICADED AREAS OF EACH TURN BAY AS SHOWN WHERE THE CLOSURE TIME IS GREATER THAN FOURTEEN (14) DAYS.
5. THIS APPLICATION ALSO APPLIES WHEN WORK IS BEING PERFORMED IN THE RIGHT LANE(S) AND THE RIGHT TURN BAY IS TO REMAIN OPEN. UNDER THIS CONDITION, "RIGHT TURN LANE" R3-1100R 24 x 24 (600 x 600) AND M6-2R 21 x 15 (530 x 330) SHALL BE USED.
6. THESE CONTROLS SHALL SUPPLEMENT MAINLINE TRAFFIC CONTROL FOR LANE CLOSURES.
7. THE SIGNS SHALL BE MOUNTED ABOVE THE BARRICADES/DRUMS ON SEPARATE SIGN SUPPORTS THAT MEET NCHRP 350 OR MASH REQUIREMENTS.
8. TRAFFIC CONTROL AND PROTECTION AT TURN BAYS (TO REMAIN OPEN TO TRAFFIC) SHALL BE INCLUDED IN THE COST OF SPECIFIED TRAFFIC CONTROL STANDARDS OR ITEMS.



DETAIL A

All dimensions are in inches (millimeters) unless otherwise shown.

MODEL: Default
 FILE NAME: P:\WORK\BIDDING\TEG_ILLINOIS\DOT Documents\DOT Offices\District 1\Projects\2105522\21 CAD Data\CAD\electrical.dgn

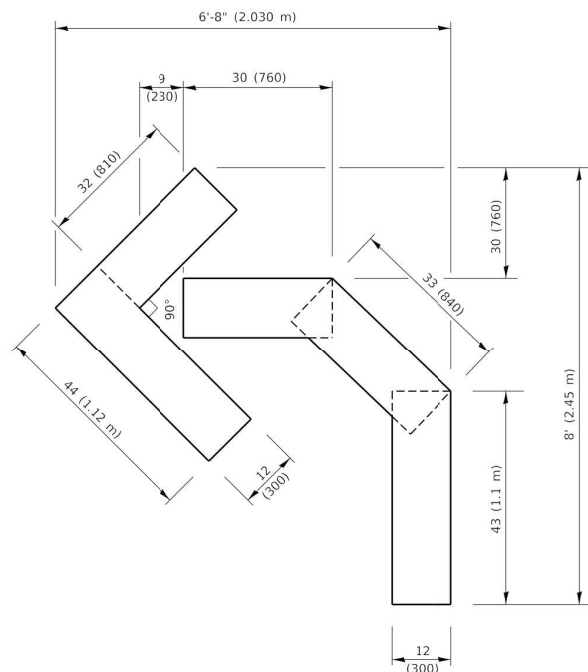
USER NAME = footemj	DESIGNED - T. RAMMACHER 09-08-94	REVISED - R. BORO 09-14-09
	DRAWN - A. HOUSEH 11-07-95	REVISED - A. SCHUETZE 07-01-13
PLOT SCALE = 50.0000" / in.	CHECKED - A. HOUSEH 10-12-96	REVISED - A. SCHUETZE 09-15-16
PLOT DATE = 3/4/2019	DATE - T. RAMMACHER 01-06-00	REVISED -

**STATE OF ILLINOIS
DEPARTMENT OF TRANSPORTATION**

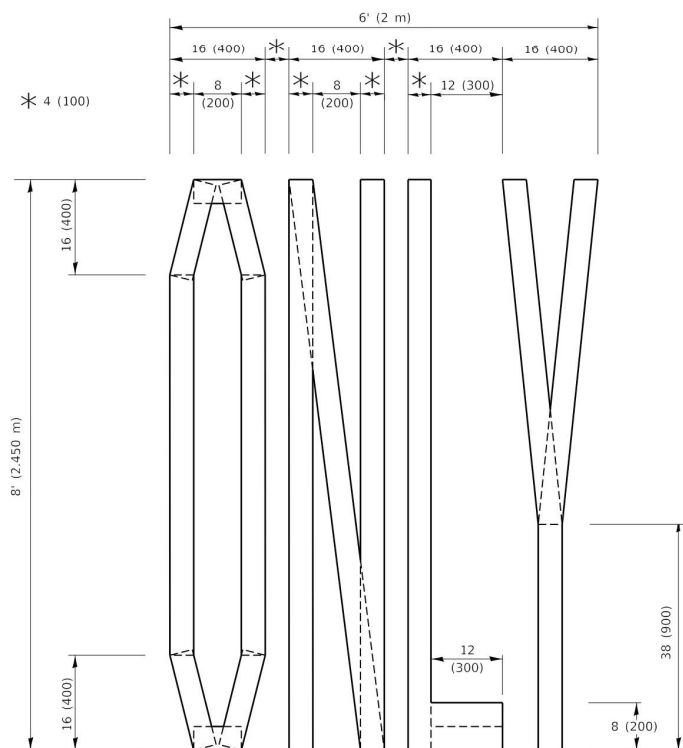
**TRAFFIC CONTROL AND PROTECTION AT TURN BAYS
(TO REMAIN OPEN TO TRAFFIC)**

SCALE: NONE SHEET 1 OF 1 SHEETS STA. TO STA.

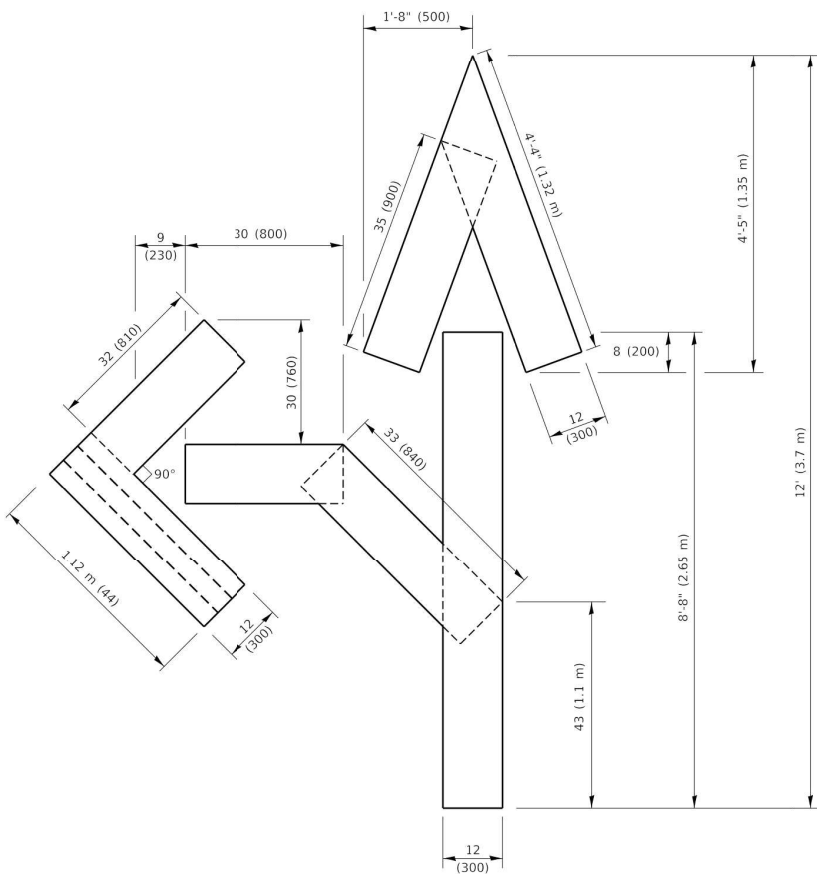
F.A.U. RTE. 2593	SECTION 21-00115-00-RS TC-14	COUNTY DuPAGE	TOTAL SHEETS 24	SHEET NO. 19
ILLINOIS FED. AID PROJECT			CONTRACT NO. 61J41	



QUANTITY
 4 (100) LINE = 45.5 ft. (13.9 m)
 15.2 sq. ft. (1.41 sq. m)

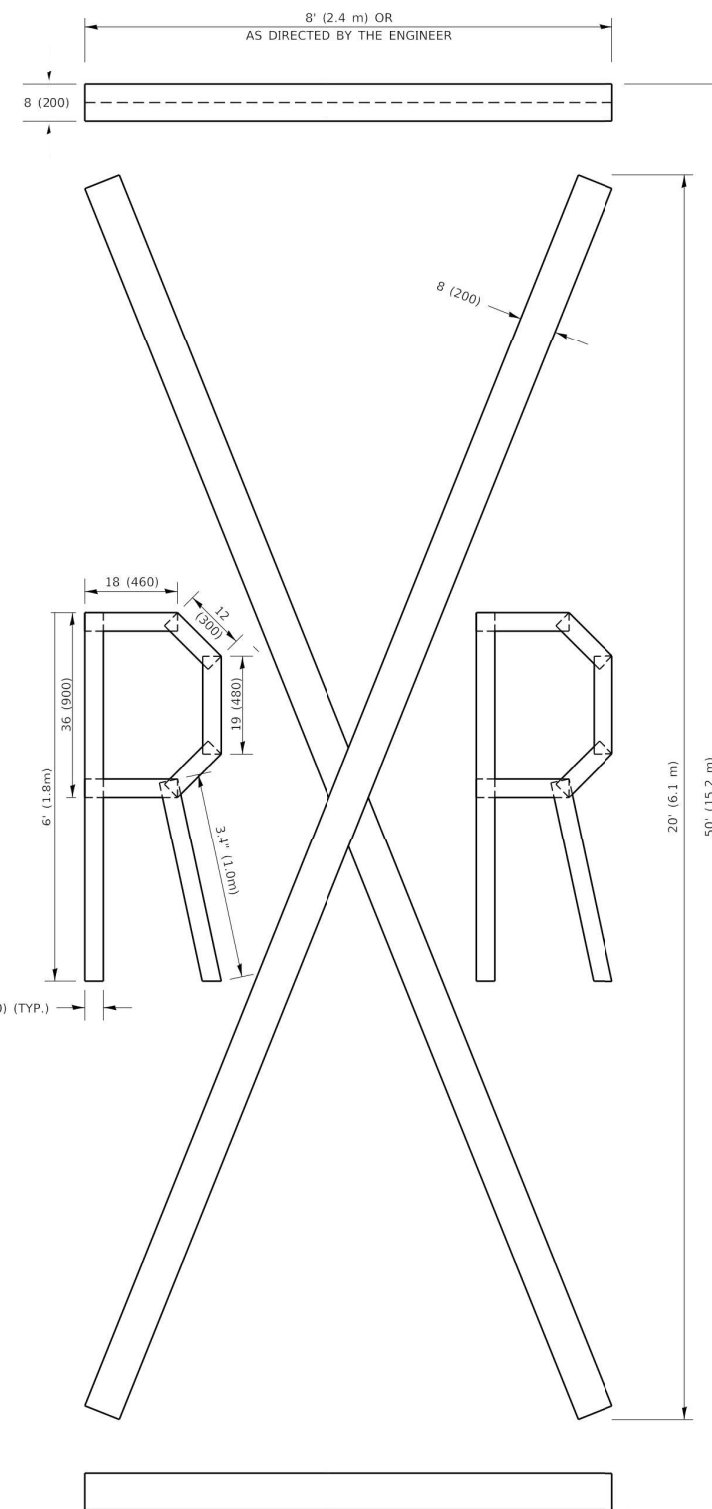


QUANTITY
 4 (100) LINE = 64.1 ft. (19.5 m)
 21.4 sq. ft. (1.99 sq. m)



QUANTITY
 4 (100) LINE = 82.5 ft. (25.1 m)
 27.5 sq. ft. (2.53 sq. m)

NOTE:
 ALL QUANTITIES OF PLACEMENT ARE REPRESENTED IN LINEAR FEET OF 4" LINES TO MATCH THE 4" TEMPORARY TAPE PAY ITEM AND REPRESENTS THE TOTAL QUANTITY OF 4" TAPE REQUIRED.



QUANTITY
 4 (100) LINE = 225.9 ft. (68.9 m)
 75.3 sq. ft. (6.99 sq. m)

All dimensions are in inches (millimeters) unless otherwise shown.

MODEL: Default
 FILE NAME: P:\WORK\HEEDM\TEG\Illinois.gov\FW\DOT\Documents\DOT_Offices\District_1\Projects\B5454224\CADData\CAD\heestric16.dgn

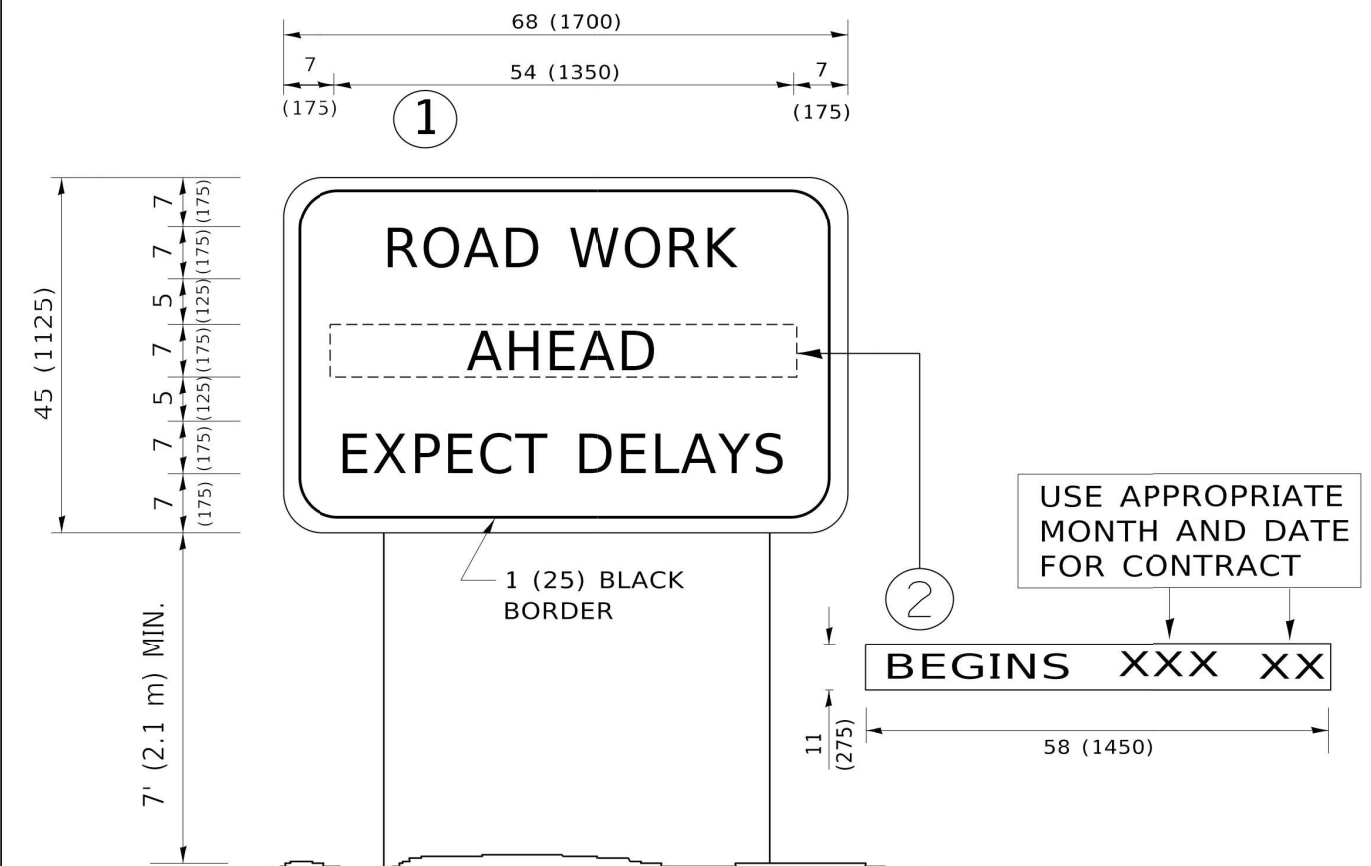
USER NAME = footemj	DESIGNED -	REVISED - T. RAMMACHER 03-02-98
	DRAWN -	REVISED - E. GOMEZ 08-28-00
PLOT SCALE = 50.0068' / in.	CHECKED -	REVISED - E. GOMEZ 08-28-00
PLOT DATE = 3/4/2019	DATE - 09-18-94	REVISED - A. SCHUETZE 09-15-16

**STATE OF ILLINOIS
 DEPARTMENT OF TRANSPORTATION**

SHORT TERM PAVEMENT MARKING LETTERS AND SYMBOLS

SCALE: NONE SHEET 1 OF 1 SHEETS STA. TO STA.

F.A.U. RTE. 2593	SECTION 21-00115-00-RS	COUNTY DuPAGE	TOTAL SHEETS 24	SHEET NO. 20
TC-16		CONTRACT NO. 61J41		
ILLINOIS FED. AID PROJECT				



NOTES:

1. USE BLACK LETTERING ON ORANGE BACKGROUND.
2. ERECT SIGNS IN ADVANCE OF THE LOCATION FOR THE "ROAD CONSTRUCTION AHEAD" SIGN AT LOCATIONS AS DIRECTED BY THE ENGINEER.
3. ERECT SIGN ① WITH INSTALLED PANEL ② ONE WEEK PRIOR TO THE START OF CONSTRUCTION.
4. REMOVE PANEL ② SOON AFTER THE START OF CONSTRUCTION.
5. SEE SPECIAL PROVISION FOR "TEMPORARY INFORMATION SIGNING" FOR ADDITIONAL INFORMATION.
6. ONE SIGN ASSEMBLY EQUALS 25.70 SQ. FT. (2.3 SQ. M.)
7. SHALL BE PAID FOR AS TEMPORARY INFORMATION SIGNING.

ALL DIMENSIONS ARE IN INCHES (MILLIMETERS) UNLESS OTHERWISE SHOWN.

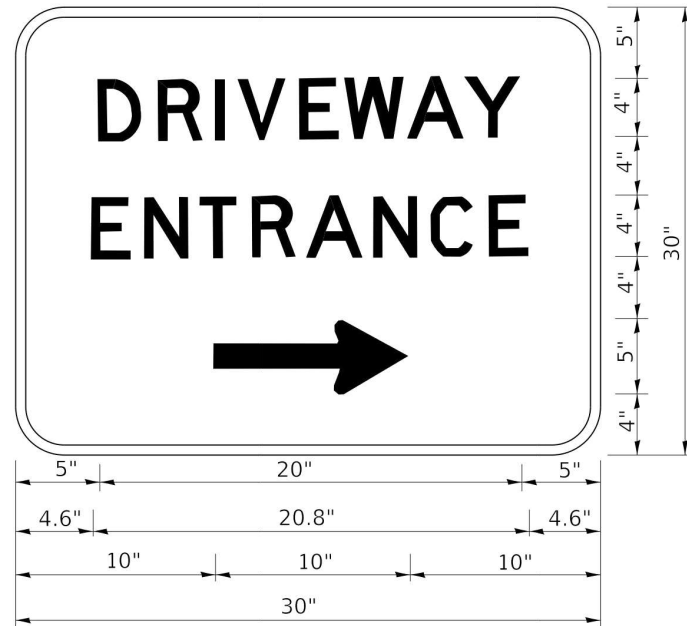
MODEL: Default
 FILE NAME: P:\WORK\BIDDING\TEG_ILLINOIS\gov_PWDOT\Documents\UDOT_Offices\Bldg\1\Projects\Bldg\527231\CADData\CAD\Sheet\TC22.dgn

USER NAME = footemj	DESIGNED -	REVISED - R. MIRS 09-15-97
	DRAWN -	REVISED - R. MIRS 12-11-97
PLOT SCALE = 50.0000" / in.	CHECKED -	REVISED - T. RAMMACHER 02-02-99
PLOT DATE = 3/4/2019	DATE -	REVISED - C. JUCIUS 01-31-07

STATE OF ILLINOIS
DEPARTMENT OF TRANSPORTATION

ARTERIAL ROAD INFORMATION SIGN			
SCALE: NONE	SHEET 1	OF 1 SHEETS	STA. TO STA.

F.A.U. RTE. 2593	SECTION 21-00115-00-RS	COUNTY DuPAGE	TOTAL SHEETS 24	SHEET NO. 21
TC-22		CONTRACT NO. 61J41		
ILLINOIS FED. AID PROJECT				



3.0" RADIUS, 0.5" BORDER, WHITE ON GREEN; REFLECTORIZED
 "DRIVEWAY" D; "ENTRANCE" D; STANDARD ARROW CUSTOM 12.0" x 5.0"

NOTES:

1. HALF OF THE SIGNS WILL REQUIRE A LEFT HAND FACING ARROW.
2. TWO SIGNS SHALL BE USED AT EACH COMMERCIAL ENTRANCE
 PLACED BACK-TO-BACK: ONE WITH A RIGHT HAND ARROW (SHOWN)
 SHALL BE PLACED ON THE NEAR RIGHT SIDE THE DRIVEWAY
 AND ONE WITH A LEFT HAND ARROW SHALL BE PLACED ON THE
 FAR LEFT SIDE OF THE DRIVEWAY.
3. SIGNS TO BE PAID FOR AS ITEM "TEMPORARY INFORMATION SIGNING".

MODEL: Default
 FILE NAME: P:\planroom.dwg
 I:\projects\2021\2021-00115-00-RS\21-00115-00-RS-24\CAD\Drawings\24-00115-00-RS-24.dwg

USER NAME = leysa	DESIGNED -	REVISED - C. JUCIUS 02-15-07
	DRAWN -	REVISED -
PLOT SCALE = 50.0000' / in.	CHECKED -	REVISED -
PLOT DATE = 8/6/2021	DATE -	REVISED -

**STATE OF ILLINOIS
 DEPARTMENT OF TRANSPORTATION**

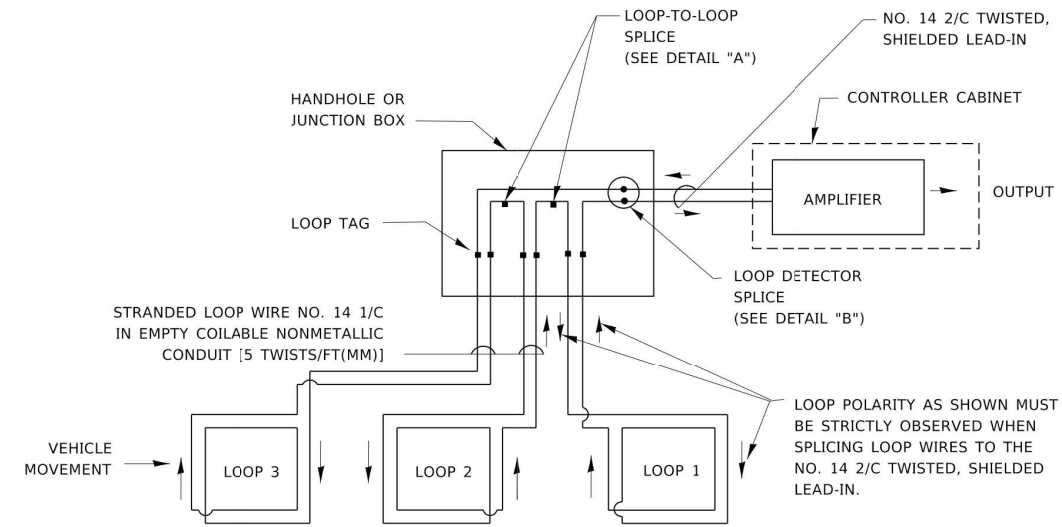
DRIVEWAY ENTRANCE SIGNING

SCALE: NONE SHEET 1 OF 1 SHEETS STA. TO STA.

F.A.U. RTE. 2593	SECTION 21-00115-00-RS	COUNTY DuPAGE	TOTAL SHEETS 24	SHEET NO. 22
TC-26			CONTRACT NO. 61J41	
ILLINOIS FED. AID PROJECT				

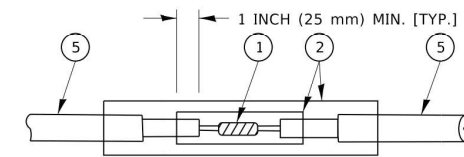
LOOP DETECTOR NOTES

1. EACH PAIR OF LOOP WIRES SHALL BE PLACED IN A SEPARATE EMPTY COILABLE NONMETALLIC CONDUIT FROM THE EDGE OF PAVEMENT TO THE HANDHOLE. SPACING BETWEEN THE HOLES DRILLED IN THE PAVEMENT SHALL NOT BE LESS THAN 6" (150 mm). EMPTY COILABLE NONMETALLIC CONDUIT SHALL BE INCLUDED IN THE COST OF THE LOOP WIRE.
2. THE NUMBER OF LOOP TURNS SHALL BE AS RECOMMENDED BY THE AMPLIFIER MANUFACTURER. ALL ADJACENT SIDES OF THE LOOPS SHALL BE INSTALLED IN SUCH A WAY THAT THE CURRENT FLOW IS IN THE SAME DIRECTION TO REINFORCE ITS MAGNETIC FIELDS FOR SMALL VEHICLE DETECTION.
3. EACH LOOP LEAD-IN SHALL BE IDENTIFIED AND PERMANENTLY TAGGED IN THE HANDHOLE. EACH LEAD-IN CABLE TAG SHALL INDICATE THE LOCATION OF THE LOOP, LOOP ROTATION (CLOCKWISE/COUNTERCLOCKWISE), LOOP LEAD-IN DIRECTION (IN OR OUT), LOOP CABLE NUMBER AND LOCATION IN CABINET, AND NUMBER OF TURNS IN THE DETECTOR LOOPS IN WATER PROOF INK AS INDICATED ON THE DISTRICT 1 STANDARD TRAFFIC SIGNAL DESIGN DETAIL. THE CONTRACTOR SHALL MARK LOOP LOCATIONS ON RECORD DRAWINGS AND PRESENT TO THE ENGINEER AFTER FINAL INSPECTION. LOOPS SHALL BE MARKED BY LANE AND LOOP NUMBER. SEE DETAIL BELOW.
4. ALL LOOP CABLE SHALL BE FASTENED WITH PLASTIC TIE WRAP TO THE HANDHOLE HOOKS.
5. IN ASPHALT PAVEMENT, LOOPS SHOULD BE PLACED IN THE BINDER AND DIVEHOLES MARKED AT THE CURB WITH A SAW-CUT. THE SAW-CUT SHALL BE CUT IN ACCORDANCE WITH LOCAL AND E.P.A. DUST CONTROL REQUIREMENTS. DETECTOR LOOP(S) SHALL NOT BE INSTALLED IN WET CONDITIONS AND THE SAW-CUTS MUST BE FREE OF DEBRIS AND RESIDUE SUCH AS DUST AND WATER WHICH IS TO BE ACHIEVED BY THE USE OF COMPRESSED AIR, WIRE BRUSHING AND HEAT DRYING ACCORDING TO SEALANT MANUFACTURER REQUIREMENTS. THE DETECTOR WIRE SHALL BE HELD IN PLACE BY THE USE OF FORM WEDGES. WEDGES SHALL BE SPACED NO MORE THAN 18" (450 mm) APART.
6. LOOP SPLICES SHALL BE SOLDERED USING A SOLDERING IRON. BLOW TORCHES OR OTHER DEVICES WHICH OXIDIZE COPPER CABLE SHALL NOT BE ALLOWED FOR SOLDERING OPERATIONS. SEE DETAIL BELOW RIGHT.
7. PREFORMED DETECTOR LOOPS SHALL BE USED, AS SHOWN ON THE PLANS, WHERE NEW CONCRETE PAVEMENT IS PROPOSED. THE INSTALLATION OF PREFORMED LOOPS SHALL BE IN ACCORDANCE WITH THE DISTRICT 1 SPECIFICATIONS OR AS DIRECTED BY THE ENGINEER.

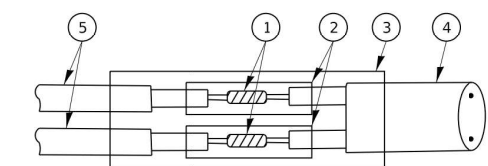


DETECTOR LOOP WIRING SCHEMATIC

- LOOPS SHALL BE SPLICED IN SERIES. SAW-CUTS SHALL BE A MINIMUM WIDTH OF 5/16" (8 mm).
- SAW-CUT DEPTHS SHALL BE 3" (75 mm). IF IN CONCRETE,
- THE SAW-CUT DEPTH SHALL BE TO THE TOP OF THE REINFORCEMENT.
- LOOP CORNERS SHALL BE DRILLED WITH A 2" (50 mm) DIAMETER CORE.

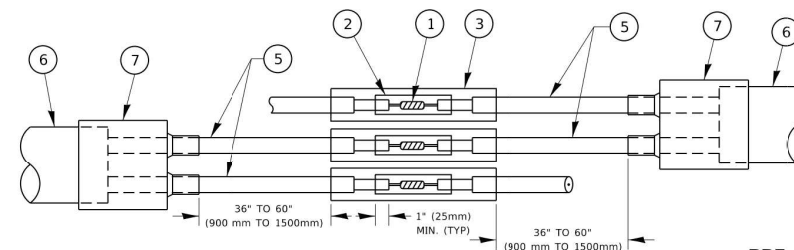


DETAIL "A"
LOOP-TO-LOOP SPLICE

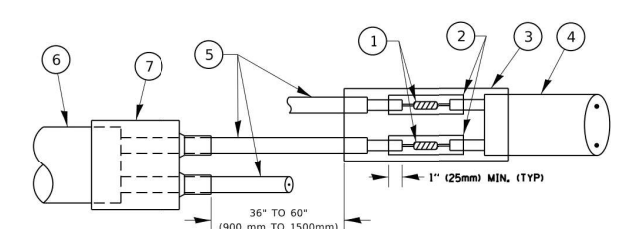


DETAIL "B"
LOOP-TO-CONTROLLER SPLICE

TYPE I LOOP



DETAIL "A"
LOOP-TO-LOOP SPLICE



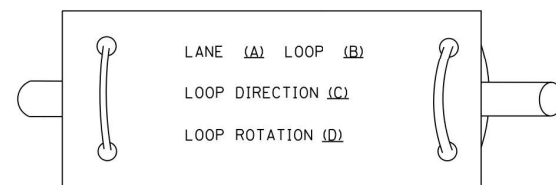
DETAIL "B"
LOOP-TO-CONTROLLER SPLICE

PREFORMED LOOP

LOOP DETECTOR SPLICE

- ① WESTERN UNION SPLICE SOLDERED WITH ROSIN CORE FLUX. ALL EXPOSED SURFACES OF THE SOLDER SHALL BE SMOOTH. THE WESTERN UNION SPLICES SHALL BE STAGGERED.
- ② WCSMW 30/100 HEAT SHRINK TUBE, MINIMUM LENGTH 3" (75 mm), UNDERWATER GRADE.
- ③ WCS 200/750 HEAT SHRINK TUBE, MINIMUM LENGTH 6" (150 mm), UNDERWATER GRADE.
- ④ NO. 14 2/C TWISTED, SHIELDED CABLE.
- ⑤ LOOP CONDUCTOR WITH FLEXIBLE PLASTIC TUBE. PREFORMED LOOP
- ⑥ XL POLYOLEFIN 2 CONDUCTOR
- ⑦ BREAKOUT SEALS. TYCO CBR-2 OR APPROVED EQUAL

LOOP LEAD-IN CABLE TAG



- A. LANE 1 IS THE LANE CLOSEST TO THE CENTERLINE OF THE ROADWAY
- B. LOOP #1 IS THE LOOP IN THE LANE CLOSEST TO THE INTERSECTION.
- C. LABEL LOOP CABLE "IN" OR LOOP CABLE "OUT".
- D. LABEL LOOP CABLE CLOCKWISE OR LOOP CABLE COUNTERCLOCKWISE.

MODEL: Default
FILE NAME: P:\WORK\HEED\HWTEG\Illinois.gov\PIV\DOT\Documents\DOT_Offices\District_1\Projects\Dist1\22-31\CAD\Dist1\CD\Sheet1005.dwg

USER NAME = footemj	DESIGNED -	REVISED -
	DRAWN -	REVISED -
PLOT SCALE = 50.0000" / in.	CHECKED -	REVISED -
PLOT DATE = 3/4/2019	DATE -	REVISED -

**STATE OF ILLINOIS
DEPARTMENT OF TRANSPORTATION**

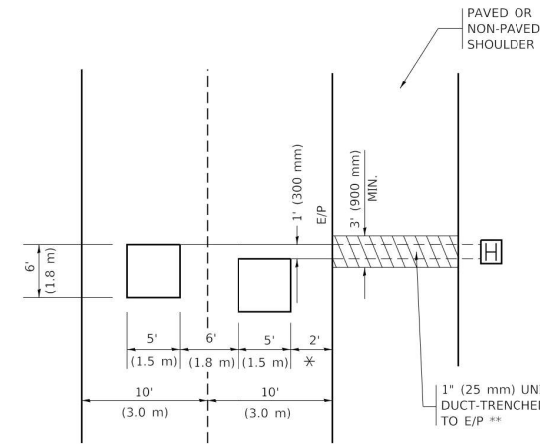
**DISTRICT ONE
STANDARD TRAFFIC SIGNAL DESIGN DETAILS**

SCALE: NONE SHEET 1 OF 1 SHEETS STA. TO STA.

F.A.U. RTE. 2593	SECTION 21-00115-00-RS	COUNTY DuPAGE	TOTAL SHEETS 24	SHEET NO. 23
TS-05			CONTRACT NO. 61J41	
ILLINOIS FED. AID PROJECT				

LOOPS NEXT TO SHOULDERS

PROVIDE A PAVEMENT REPLACEMENT
NOTE WHICH SHOULD EQUAL
3' (900 mm) X WIDTH OF
PAVED SHOULDER.

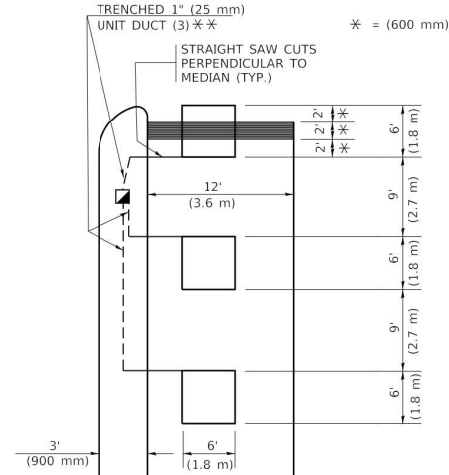


* = (600 mm)

** UNIT DUCT IS TO BE SHOWN ON PLAN SHEETS
BUT SHALL NOT BE INCLUDED IN THE PAY ITEMS.

LEFT TURN LANES WITH MEDIANS
VOLUME DENSITY ("FAR OUT" DETECTION)
ON SAME APPROACH
(PROTECTED / PERMITTED LEFT TURN PHASING)

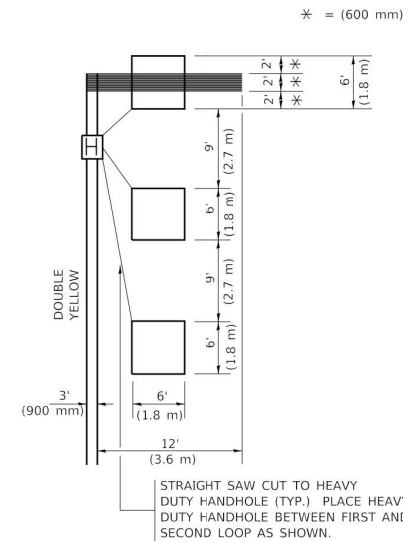
HANDHOLE LOCATION MAY
VARY DEPENDING ON GEOMETRICS
AND DESIGN OF TRAFFIC SIGNALS.
HEAVY-DUTY HANDHOLES TO BE
USED WHEN THE MEDIAN IS
MOUNTABLE. REFER TO STANDARD
814001 TO ENSURE THAT HANDHOLE
FITS IN MEDIAN.



** UNIT DUCT IS TO BE SHOWN ON PLAN SHEETS
BUT SHALL NOT BE INCLUDED IN THE PAY ITEMS.

NOTE: DUAL LEFT TURNS NOT SHOWN REFER TO
PLAN SHEET FOR DETECTOR LOOP REPLACEMENT

LEFT TURN LANES WITHOUT MEDIANS
VOLUME DENSITY ("FAR OUT" DETECTION)
ON SAME APPROACH
(PROTECTED / PERMITTED LEFT TURN PHASING)



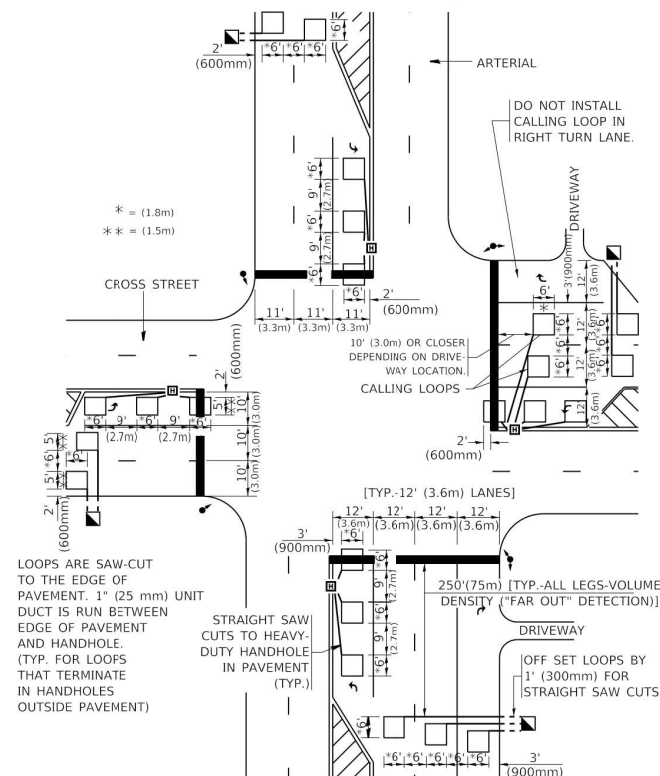
NOTE: DUAL LEFT TURNS NOT SHOWN REFER TO
PLAN SHEET FOR DETECTOR LOOP REPLACEMENT

NOTES:

VEHICLES LOOP DETECTORS

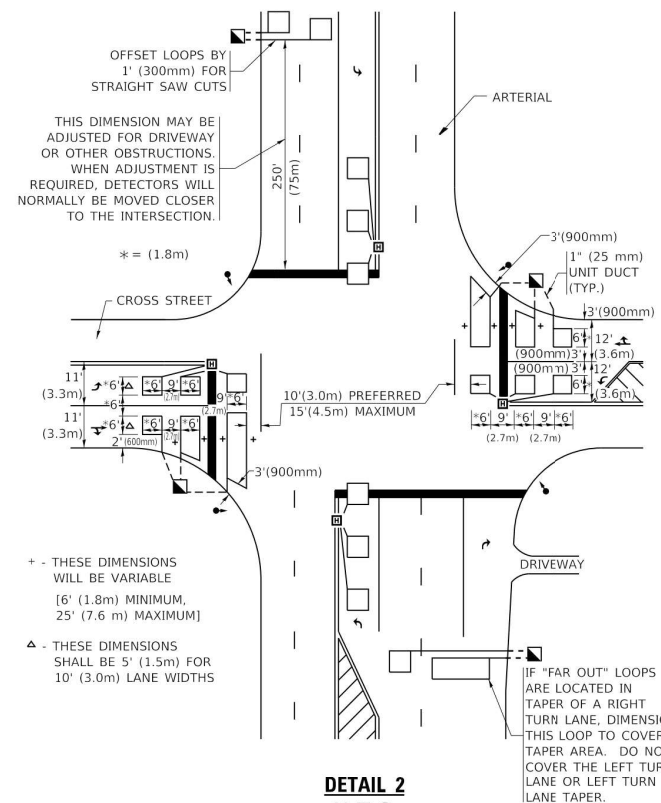
- * ALL LEAD IN CABLE SHALL BE TWO CONDUCTOR NO. 14 TWISTED, SHIELDED.
- * EACH DETECTOR LOOP SHALL HAVE ITS OWN SAW CUT FROM THE LOOP TO THE EDGE OF PAVEMENT OR TO A HANDHOLE IN THE PAVEMENT.
- * EACH DETECTOR LOOP SHALL HAVE ITS OWN ONE INCH (25 mm) UNIT DUCT BETWEEN THE EDGE OF PAVEMENT AND THE FIRST HANDHOLE OR JUNCTION BOX. EACH UNIT DUCT RUN SHALL BE SHOWN ON THE PLANS BY THE DESIGNER, BUT SHALL NOT BE PAID FOR SEPARATELY. THIS ITEM IS INCIDENTAL TO THE PAY ITEM FOR DETECTOR LOOPS.
- * ONE DIMENSION OF ALL DETECTOR LOOPS SHALL BE SIX FEET (1.8 m)
- * EACH LANE OF NON-LOCKING, PRESENCE DETECTION AND EACH LANE OF A DOUBLE LEFT TURN LANE REQUIRES A SEPARATE INDUCTIVE LOOP DETECTOR AND LEAD IN CABLE.
- * WHEN NON-LOCKING, PRESENCE DETECTION IS USED, MORE THAN ONE LOOP PER LANE IS REQUIRED BEHIND THE STOP BAR (i.e. 1-1/2, 1-3/4, 2).
- * WHEN SYSTEM LOOPS ARE REQUIRED ON AN APPROACH OF AN INTERSECTION, THE LOOPS USED FOR VOLUME DENSITY AND INTERSECTION TIMING SHALL ALSO BE USED AS SYSTEM DETECTORS. EACH ONE OF THESE TYPE OF LOOPS REQUIRES A SEPARATE TWO CONDUCTOR NO. 14 TWISTED SHIELDED CABLE AND A SEPARATE INDUCTIVE LOOP DETECTOR WHEN NEW CONTROLLERS ARE UTILIZED. THE DESIGNER SHALL LABEL THESE TYPES OF LOOPS AS "INTERSECTION AND SAMPLING (SYSTEM) DETECTORS" ON THE SIGNAL LAYOUT, THE INTERCONNECT PLAN AND THE SYSTEM CABLE PLAN. WHEN AN EXISTING CONTROLLER IS UTILIZED FOR THIS TYPE OF DETECTION, THE PAY ITEM "INDUCTIVE LOOP DETECTOR WITH SYSTEM OUTPUT" SHOULD BE USED.

ARTERIAL-VOLUME DENSITY ("FAR OUT" DETECTION)
CROSS STREET-NON VOLUME DENSITY ("FAR OUT" DETECTION)



DETAIL 1
N.T.S.

ARTERIAL-VOLUME DENSITY ("FAR OUT" DETECTION)
CROSS STREET-NON VOLUME DENSITY ("UPTIGHT" PRESENCE DETECTION)



DETAIL 2
N.T.S.

PLACEMENT OF DETECTORS

THE FOLLOWING FIGURES REPRESENT THE MOST COMMON DETECTOR LOOP LOCATIONS AND SIZES. ADJUSTMENTS WILL BE NECESSARY FOR SPECIFIC GEOMETRIC CONSIDERATIONS.

LOCATIONS AND DIMENSIONS OF DETECTOR LOOPS ARE REQUIRED ON ALL SIGNAL LAYOUT PLAN SHEETS.

"FAR OUT" DETECTION REFERS TO LOCKING, PRESENCE TYPE DETECTION LOCATED IN THRU LANES, RIGHT TURN LANES, AND RIGHT TURN LANE TAPER AREAS (IF APPLICABLE), USUALLY 250' (75 m) IN ADVANCE OF STOP BARS. "UPTIGHT" DETECTION REFERS TO NON-LOCKING PRESENCE TYPE DETECTION LOCATED IN ALL LANES AND 10'-15' (3.0 m-4.5 m) BEHIND THE CROSSING STREET'S EDGE OF PAVEMENT EXTENDED.

NOTE:

ALL DETAILS AND NOTES SHOWN ARE FROM THE I.D.O.T. DISTRICT 1 TRAFFIC SIGNAL DESIGN GUIDELINES DATED JANUARY 1995

THIS DRAWING HAS BEEN PREPARED TO ASSIST THE RESIDENT ENGINEER FOR ALL ROADWAY RESURFACING OR S.M.A.R.T. PROJECTS WHERE THE DIMENSIONS ARE NOT SHOWN ON THE PLANS AND THE FINAL LOCATIONS FOR CROSSWALKS OR STOP BARS ARE NOT DETERMINED.

MODEL: Default
FILE NAME: P:\WORK\REDLINE\EG_ILlinois.gov_P\W\DOT\Documents\DOT_Offices\District_1\Projects\Dist1\5422-34\CAD\Drawn\CD\Sheet1057.dgn

USER NAME	= footemj	DESIGNED	-	REVISED	-
PLOT SCALE	= 50.0000' / in.	DRAWN	-	REVISED	-
PLOT DATE	= 3/4/2019	CHECKED	= R.K.F.	REVISED	-
		DATE	-	REVISED	-

STATE OF ILLINOIS
DEPARTMENT OF TRANSPORTATION

DISTRICT 1 - DETECTOR LOOP INSTALLATION
DETAILS FOR ROADWAY RESURFACING

SCALE: NONE SHEET 1 OF 1 SHEETS STA. TO STA.

F.A.U. RTE.	SECTION	COUNTY	TOTAL SHEETS	SHEET NO.
2593	21-00115-00-RS	DuPAGE	24	24
	TS-07	CONTRACT NO.	61341	
ILLINOIS FED. AID PROJECT				