

04-28-2023 LETTING ITEM 080

STATE OF ILLINOIS
DEPARTMENT OF TRANSPORTATION

FAU RTE.	SECTION	COUNTY	TOTAL SHEETS	SHEET NO.
1533	21-00116-00-RS	DuPAGE	23	1
		ILLINOIS	CONTRACT NO. 61J37	

FOR INDEX OF SHEETS, SEE SHEET NO. 2

71ST STREET DESIGN DESIGNATION
MINOR COLLECTOR

TRAFFIC DATA
71ST STREET 2020 ADT = 1,200

POSTED SPEED LIMIT
71ST STREET = 25 MPH

DESIGN SPEED LIMIT
71ST STREET = 30 MPH

**PROPOSED PLANS FOR
FEDERAL AID HIGHWAY
FAU ROUTE 1533 (71ST STREET)
W. VILLAGE LIMIT TO FAU 0311 (DUNHAM ROAD)
RESURFACING**
SECTION No.: 21-00116-00-RS
PROJECT No: SG9I(319)
VILLAGE OF DOWNERS GROVE
DuPAGE COUNTY
C-91-030-22



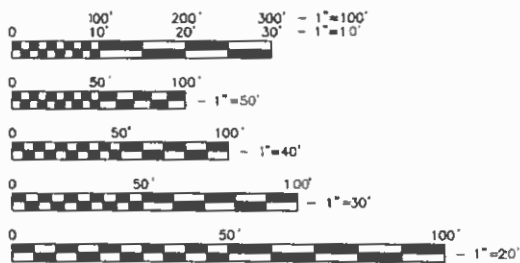
END IMPROVEMENTS
STA. 28+97.50

BEGIN IMPROVEMENTS
STA. 1+00.00

DOWNERS GROVE TOWNSHIP

LOCATION MAP
NOT TO SCALE

GROSS LENGTH = 2,797.50 FT = 0.530 MILE
NET LENGTH = 2,797.50 FT = 0.530 MILE



FULL SIZE PLANS HAVE BEEN PREPARED USING STANDARD ENGINEERING SCALES. REDUCED SIZE PLANS WILL NOT CONFORM TO STANDARD SCALES. IN MAKING MEASUREMENTS ON REDUCED PLANS, THE ABOVE SCALES MAY BE USED.

J.U.I.E.
JOINT UTILITY LOCATION INFORMATION FOR EXCAVATION
1 800 892-0123
OR 811

CONTRACT NO. 61J37

STATE OF ILLINOIS DEPARTMENT OF TRANSPORTATION	
APPROVED	February 1 20 23
VILLAGE OF DOWNERS GROVE, DIRECTOR OF PUBLIC WORKS	
PASSED	2.21 2023
DISTRICT 1 ENGINEER OF LOCAL ROADS AND STREETS	
RELEASING FOR BID BASED ON LIMITED REVIEW	FEBRUARY 21 20 23
REG. COMM. ENGINEER	



SCOTT A. VASKO, P.E.
Village of Downers Grove
Expires 11/30/23

**PRINTED BY THE AUTHORITY
OF THE STATE OF ILLINOIS**

FEDERAL AID PROGRAM ENGINEER: CARMEN E. RAMOS, P. E. SCHAUMBURG, IL

INDEX OF SHEETS

- 1 COVER SHEET
- 2 INDEX OF SHEETS, HIGHWAY STANDARDS, LIST OF DETAILS, AND GENERAL NOTES
- 3 - 6 SUMMARY OF QUANTITIES
- 7 EXISTING TYPICAL SECTIONS
- 8 PROPOSED TYPICAL SECTIONS
- 9 PLAN SHEET (STA. 0+00 TO STA. 11+00)
- 10 PLAN SHEET (STA. 11+00 TO STA. 22+00)
- 11 PLAN SHEET (STA. 22+00 TO STA. 29+49)
- 12 - 14 CURB RAMP DETAILS
- 15 - 16 VILLAGE DETAILS
- 17 - 23 DISTRICT 1 DETAILS

HIGHWAY STANDARDS

- 000001-08 STANDARD SYMBOLS, ABBREVIATIONS, AND PATTERNS
- 280001-07 TEMPORARY EROSION CONTROL SYSTEMS
- 424001-11 PERPENDICULAR CURB RAMPS FOR SIDEWALKS
- 424011-04 CORNER PARALLEL CURB RAMPS FOR SIDEWALKS
- 424016-05 MID-BLOCK CURB RAMPS FOR SIDEWALKS
- 442201-03 CLASS C & D PATCHES
- 606001-08 CONCRETE CURB TYPE B & COMBINATION CONCRETE CURB AND GUTTER
- 701006-05 OFF-RD OPERATIONS, 2L, 2W, 15' TO 24" FROM PAVEMENT EDGE
- 701301-04 LANE CLOSURE, 2L, 2W, SHORT TIME OPERATIONS
- 701311-03 LANE CLOSURE, 2L, 2W MOVING OPERATIONS - DAY ONLY
- 701501-06 URBAN LANE CLOSURE, 2L, 2W, UNDIVIDED
- 701701-10 URBAN LANE CLOSURE, MULTILANE INTERSECTION
- 701801-06 SIDEWALK, CORNER OR CROSSWALK CLOSURE
- 701901-08 TRAFFIC CONTROL DEVICES

LIST OF DETAILS

- BD-08 DETAILS FOR FRAMES AND LIDS ADJUSTMENT WITH MILLING
- BD-22 PAVEMENT PATCHING FOR HMA SURFACED STREETS
- BD-32 BUTT JOINT AND HMA TAPER DETAILS
- TC-10 TRAFFIC CONTROL AND PROTECTION FOR SIDE ROADS, INTERSECTIONS AND DRIVEWAYS
- TC-13 DISTRICT 1 TYPICAL PAVEMENT MARKINGS DETAIL
- TC-16 PAVEMENT MARKING LETTERS & SYMBOLS FOR TRAFFIC STAGING
- TC-22 ARTERIAL ROAD INFORMATION SIGN

GENERAL NOTES

1. ALL REFERENCES TO THE 'VILLAGE' IN THESE GENERAL NOTES SHALL BE INTERPRETED TO MEAN THE VILLAGE OF DOWNERS GROVE.
2. THOSE EXISTING TRAFFIC SIGNS WHICH ARE SO DESIGNATED BY THE ENGINEER SHALL BE REMOVED, STORED AND SUBSEQUENTLY RELOCATED BY THE CONTRACTOR IN ACCORDANCE WITH ARTICLE 107.25. ANY SIGNS WHICH ARE DAMAGED BY THE CONTRACTOR AS DETERMINED BY THE ENGINEER SHALL BE REPLACED IN KIND BY THE CONTRACTOR.
3. ALL TRAFFIC CONTROL AND OTHER ADVISORY SIGNS NEEDED FOR CONSTRUCTION ARE TO BE FURNISHED BY THE CONTRACTOR IN ACCORDANCE WITH THE PLANS AND IDOT STANDARDS FOR TRAFFIC CONTROL AND PROTECTION.
4. SAW CUTTING OF PAVEMENTS, SIDEWALK, ETC. SHALL BE FULL DEPTH AND SHALL RESULT IN A CLEAN STRAIGHT EDGE ON THE PORTION REMAINING.
5. THE CONTRACTOR SHALL BE RESPONSIBLE FOR THE PROTECTION OF ALL UNDERGROUND OR SURFACE UTILITIES EVEN THOUGH THEY MAY NOT BE SHOWN ON THE PLANS. ANY UTILITY THAT IS DAMAGED DURING CONSTRUCTION SHALL BE REPAIRED OR REPLACED TO THE SATISFACTION OF THE ENGINEER.
6. WHENEVER, DURING CONSTRUCTION OPERATIONS, ANY LOOSE MATERIAL IS DEPOSITED IN THE FLOW LINE OF DRAINAGE STRUCTURES SUCH THAT THE NATURAL FLOW OF WATER IS OBSTRUCTED, IT SHALL BE REMOVED AT THE CLOSE OF EACH WORKING DAY. AT THE CONCLUSION OF CONSTRUCTION OPERATIONS, ALL DRAINAGE STRUCTURES SHALL BE FREE OF DIRT AND DEBRIS.
7. THE CONTRACTOR SHALL NOT OPEN OR SHUT ANY WATER VALVES OR FIRE HYDRANTS WITHOUT PRIOR AUTHORIZATION FROM THE VILLAGE WATER DEPARTMENT.
8. THE THICKNESS OF THE HOT-MIX ASPHALT MIXTURES SHOWN IN THE PLANS ARE NOMINAL. DEVIATIONS MAY OCCUR DUE TO IRREGULARITIES IN THE SURFACES OR BASE ON WHICH THEY ARE PLACED.
9. MAILBOXES WHICH ARE IN CONFLICT WITH PROPOSED IMPROVEMENTS SHALL BE REMOVED, TEMPORARILY RELOCATED, AND REPLACED UPON COMPLETION OF THE PROPOSED IMPROVEMENTS IN ACCORDANCE WITH ARTICLE 107.20 AND AS DIRECTED BY THE ENGINEER.
10. CONTRACTOR SHALL TAKE PRECAUTION BY PRESERVING EXISTING TREES WITHIN THE RIGHT OF WAY. IF ANY DAMAGE OCCURS, TREES SHALL BE REPLACED IN KIND PER ARTICLE 201.07 REPAIR AOR REPLACEMENT OF EXISTING PLANT MATERIAL REQUIREMENTS STATED HEREIN.
11. THE CONTRACTOR SHALL CONTACT THE IDOT ARTERIAL DISTRICT ONE TRAFFIC CONTROL SUPERVISOR KALPANA KANNAN-HOSADURGA AT KALPANA.KANNAN-HOSADURGA@ILLINOIS.GOV A MINIMUM OF 72 HOURS IN ADVANCE OF BEGINNING WORK.

STATE OF ILLINOIS DEPARTMENT OF TRANSPORTATION

INDEX OF SHEETS, HIGHWAY STANDARDS, LIST OF DETAILS AND GENERAL NOTES

FILE NAME =	USER NAME -- USER	DESIGNED -- NRH	REVISED			F.A.U. RTE.	SECTION	COUNTY	TOTAL SHEETS	SHEET NO.		
FILE NAME =		DRAWN -- NRH	REVISED			1533	21-00116-00-RS	DuPAGE	23	2		
	PLOT SCALE --	CHECKED -- SWG	REVISED			CONTRACT NO. 61J37						
	PLOT DATE -- 01/04/22	DATE -- 01/04/22	REVISED			NOT TO SCALE	SHEET NO. 1 OF 1 SHEETS	STA.	TO STA.	ILLINOIS	FED. AID PROJECT	

CODE NO.	ITEM	UNIT	TOTAL QUANTITY	CONSTRUCTION CODE	
				STP FUNDS	ROADWAY
				80% FED / 20% LA	
				0005	
				URBAN	
20200100	EARTH EXCAVATION	CU YD	50		50
21001000	GEOTECHNICAL FABRIC FOR GROUND STABILIZATION	SQ YD	115		115
21101615	TOPSOIL FURNISH AND PLACE, 4"	SQ YD	600		600
25200110	SODDING, SALT TOLERANT	SQ YD	600		600
▲ 25200200	SUPPLEMENTAL WATERING	UNIT	34		34
28000250	TEMPORARY EROSION CONTROL SEEDING	POUND	12		12
28000510	INLET FILTERS	EACH	23		23
35101600	AGGREGATE BASE COURSE, TYPE B 4"	SQ YD	360		360
40600290	BITUMINOUS MATERIALS (TACK COAT)	POUND	7,750		7,750
40600400	MIXTURE FOR CRACKS, JOINTS, AND FLANGEWAYS	TON	30		30
40600982	HOT-MIX ASPHALT SURFACE REMOVAL - BUTT JOINT	SQ YD	240		240
40603200	POLYMERIZED HOT-MIX ASPHALT BINDER COURSE, 1L-4.75, N50	TON	480		480
40604060	HOT-MIX ASPHALT SURFACE COURSE, 1L-9.5, MIX "D", N50	TON	960		960
42300200	PORTLAND CEMENT CONCRETE DRIVEWAY PAVEMENT, 6 INCH	SQ YD	250		250
42400800	DETECTABLE WARNINGS	SQ FT	230		230
44000157	HOT-MIX ASPHALT SURFACE REMOVAL, 2"	SQ YD	11,200		11,200

* DENOTES SPECIALTY ITEM
▲ DENOTES ITEM WITH SPECIAL PROVISION

FILE NAME =	USER NAME - USER	DESIGNED - NRH	REVISED
FILE NAME =		DRAWN - NRH	REVISED
	PLOT SCALE -	CHECKED - SWG	REVISED
	PLOT DATE - 01/06/22	DATE - 01/06/22	REVISED

**STATE OF ILLINOIS
DEPARTMENT OF TRANSPORTATION**

SUMMARY OF QUANTITIES

NOT TO SCALE SHEET NO. 1 OF 4 SHEETS STA. TO STA.

F.A.U. RTE.	SECTION	COUNTY	TOTAL SHEETS	SHEET NO.
153321-00116-00-RS		DuPAGE	23	3
CONTRACT NO. 61J37				
	ILLINOIS	FED. AID PROJECT		

CODE NO.	ITEM	UNIT	TOTAL QUANTITY	CONSTRUCTION CODE	
				STP FUNDS 80% FED / 20% LA ROADWAY	0005 URBAN
44000200	DRIVEWAY PAVEMENT REMOVAL	SQ YD	325	325	
44201713	CLASS D PATCHES, TYPE I, 6 INCH	SQ YD	60	60	
44201717	CLASS D PATCHES, TYPE II, 6 INCH	SQ YD	60	60	
44201721	CLASS D PATCHES, TYPE III, 6 INCH	SQ YD	60	60	
44201723	CLASS D PATCHES, TYPE IV, 6 INCH	SQ YD	60	60	
60300305	FRAMES AND LIDS TO BE ADJUSTED	EACH	14	14	
60406000	FRAMES AND LIDS, TYPE 1, OPEN LID	EACH	1	1	
60406100	FRAMES AND LIDS, TYPE 1, CLOSED LID	EACH	1	1	
Δ *	66900200 NON-SPECIAL WASTE DISPOSAL	CU YD	50	50	
Δ *	66900530 SOIL DISPOSAL ANALYSIS	EACH	1	1	
Δ *	66901001 REGULATED SUBSTANCES PRE-CONSTRUCTION PLAN	LSUM	1	1	
Δ *	66901003 REGULATED SUBSTANCES FINAL CONSTRUCTION REPORT	LSUM	1	1	
Δ *	66901006 REGULATED SUBSTANCES MONITORING	CAL DA	4	4	
	67100100 MOBILIZATION	LSUM	1	1	
	70102620 TRAFFIC CONTROL AND PROTECTION, STANDARD 701501	LSUM	1	1	
	70102635 TRAFFIC CONTROL AND PROTECTION, STANDARD 701701	LSUM	1	1	

* DENOTES SPECIALTY ITEM
Δ DENOTES ITEM WITH SPECIAL PROVISION

FILE NAME =	USER NAME - USER	DESIGNED - NRH	REVISED
FILE NAME =		DRAWN - NRH	REVISED
	PLOT SCALE -	CHECKED - SWG	REVISED
	PLOT DATE - 01/06/22	DATE - 01/06/22	REVISED

**STATE OF ILLINOIS
DEPARTMENT OF TRANSPORTATION**

SUMMARY OF QUANTITIES

NOT TO SCALE SHEET NO. 2 OF 4 SHEETS STA. TO STA.

F.A.U. RTE.	SECTION	COUNTY	TOTAL SHEETS	SHEET NO.
153321-00116-00-RS		DuPAGE	23	4
CONTRACT NO. 61J37				
	ILLINOIS	FED. AID PROJECT		

CODE NO.	ITEM	UNIT	TOTAL QUANTITY	CONSTRUCTION CODE	
				STP FUNDS	80% FED / 20% LA
				ROADWAY	
				0005	
				URBAN	
70102640	TRAFFIC CONTROL AND PROTECTION, STANDARD 701801	LSUM	1	1	
70300100	SHORT TERM PAVEMENT MARKING	FOOT	1,160	1,160	
70300150	SHORT TERM PAVEMENT MARKING REMOVAL	SQ FT	400	400	
70306100	TEMPORARY PAVEMENT MARKING LETTERS AND SYMBOLS - TYPE III TAPE	SQ FT	80	80	
* 78000100	THERMOPLASTIC PAVEMENT MARKING - LETTERS AND SYMBOLS	SQ FT	216	216	
* 78000200	THERMOPLASTIC PAVEMENT MARKING - LINE 4"	FOOT	9,600	9,600	
* 78000600	THERMOPLASTIC PAVEMENT MARKING - LINE 12"	FOOT	330	330	
* 78000650	THERMOPLASTIC PAVEMENT MARKING - LINE 24"	FOOT	115	115	
Δ X0100002	GRADING AND SHAPING SPECIAL	SQ YD	80	80	
Δ X0320050	CONSTRUCTION LAYOUT (SPECIAL)	LSUM	1	1	
Δ X2070304	POROUS GRANULAR EMBANKMENT (SPECIAL)	CU YD	50	50	
Δ X2800510	INLET FILTER CLEANING	EACH	23	23	
Δ X4240430	PORTLAND CEMENT CONCRETE SIDEWALK 5 INCH (SPECIAL)	SQ FT	3,200	3,200	
Δ X4400500	COMBINATION CURB AND GUTTER REMOVAL (SPECIAL)	FOOT	1,300	1,300	
Δ X4404700	SIDEWALK REMOVAL (SPECIAL)	SQ FT	3,475	3,475	
Δ X6030310	FRAMES AND LIDS TO BE ADJUSTED (SPECIAL)	EACH	1	1	

* DENOTES SPECIALTY ITEM
Δ DENOTES ITEM WITH SPECIAL PROVISION

FILE NAME =	USER NAME - USER	DESIGNED - NRH	REVISED
FILE NAME =		DRAWN - NRH	REVISED
	PLOT SCALE -	CHECKED - SWG	REVISED
	PLOT DATE - 01/06/22	DATE - 01/06/22	REVISED

**STATE OF ILLINOIS
DEPARTMENT OF TRANSPORTATION**

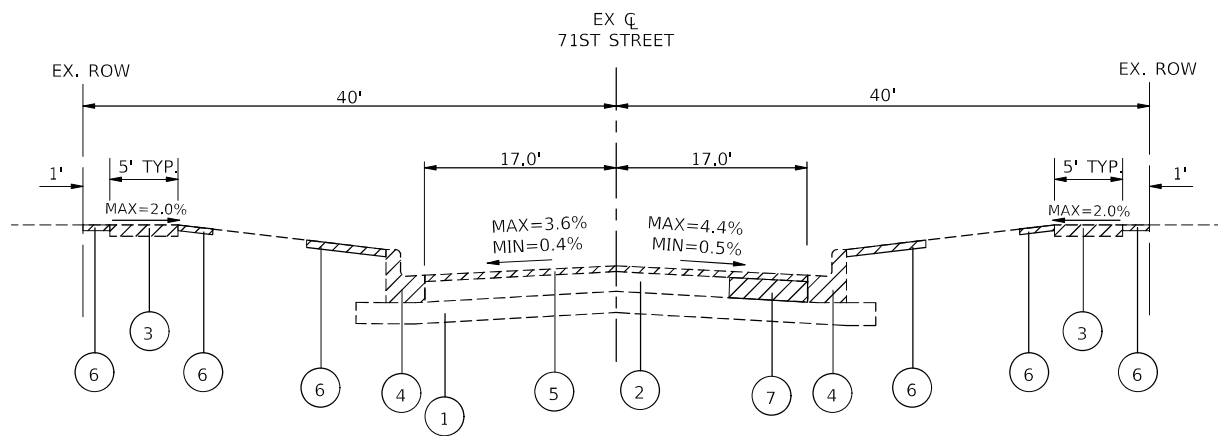
SUMMARY OF QUANTITIES

NOT TO SCALE SHEET NO. 3 OF 4 SHEETS STA. TO STA.

F.A.U. RTE.	SECTION	COUNTY	TOTAL SHEETS	SHEET NO.
1533	21-00116-00-RS	DuPAGE	23	5
CONTRACT NO. 61J37				
ILLINOIS		FED. AID PROJECT		

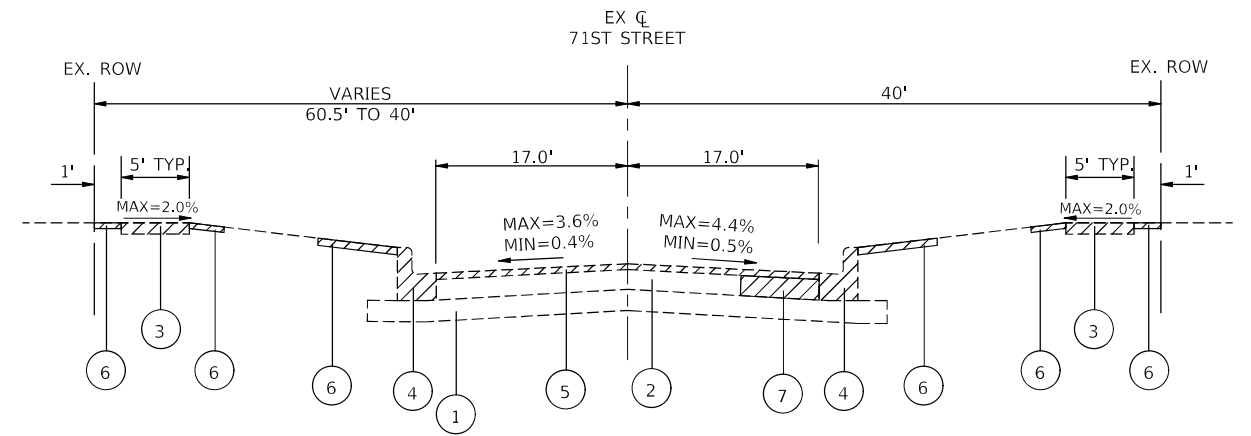
CODE NO.	ITEM	UNIT	TOTAL QUANTITY	CONSTRUCTION CODE	
				STP FUNDS	ROADWAY
				80% FED / 20% LA	0005
					URBAN
△ X6060079	COMBINATION CONCRETE CURB & GUTTER, TYPE M-3.12 (SPECIAL)	FOOT	1,300		1,300
△ X6061005	CONCRETE CURB, TYPE B (SPECIAL)	FOOT	45		45
△ Z0004510	HOT-MIX ASPHALT DRIVEWAY PAVEMENT, 3"	SQ YD	75		75
△ Z0030850	TEMPORARY INFORMATION SIGNING	SQ FT	52		52

* DENOTES SPECIALTY ITEM
 △ DENOTES ITEM WITH SPECIAL PROVISION



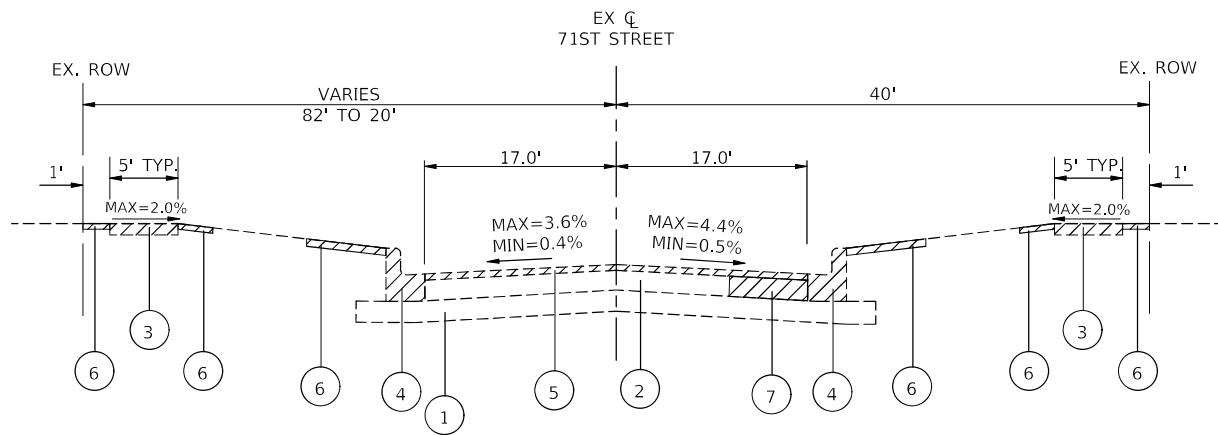
EXISTING TYPICAL SECTION

STA. 1+00 TO STA. 2+49, 71ST STREET
 STA. 7+45 TO STA. 28+97.50, 71ST STREET



EXISTING TYPICAL SECTION

STA. 5+64 TO STA. 7+45, 71ST STREET



EXISTING TYPICAL SECTION

STA. 2+49 TO STA. 5+64, 71ST STREET

LEGEND

- ① EXISTING SUBGRADE
- ② EXISTING HMA BASE, 4" - 12", VARIES
- ③ EXISTING PORTLAND CEMENT CONCRETE SIDEWALK REMOVAL WHERE SHOWN ON PLANS AND AS DETERMINED IN THE FIELD BY ENGINEER
- ④ EXISTING COMBINATION CONCRETE CURB & GUTTER, TYPE M3,12 REMOVAL WHERE SHOWN ON PLANS
- ⑤ EXISTING HMA SURFACE REMOVAL, 2"
- ⑥ EXISTING TURF RESTORATION
- ⑦ EXISTING BASE REMOVAL FOR CLASS D PATCH (LOCATION AND DIMENSIONS DETERMINED BY ENGINEER)

LEGEND

REMOVAL ITEMS
 (WHERE SHOWN ON PLANS OR AS
 DETERMINED IN THE FIELD BY ENGINEER)

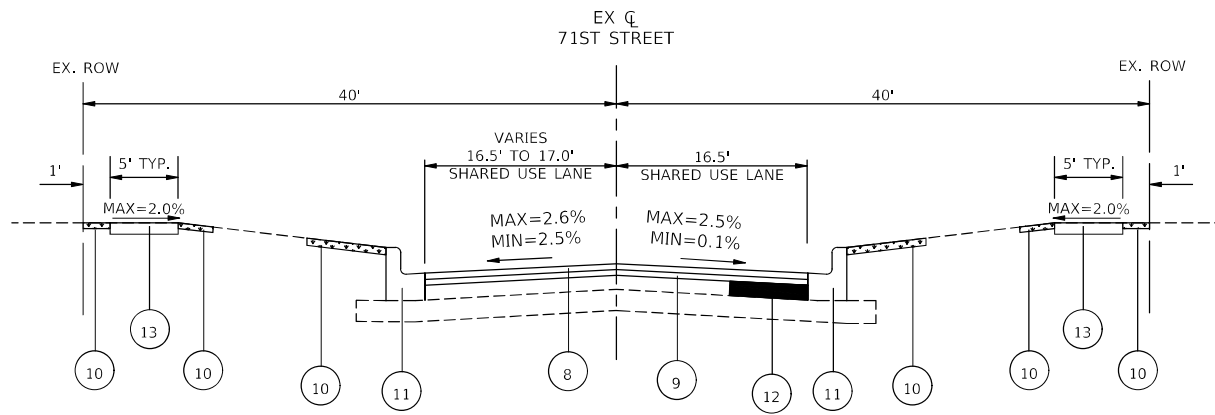
**STATE OF ILLINOIS
 DEPARTMENT OF TRANSPORTATION**

EXISTING TYPICAL SECTIONS

FILE NAME =	USER NAME - USER	DESIGNED - NRH	REVISED
FILE NAME =		DRAWN - NRH	REVISED
	PLOT SCALE -	CHECKED - SWG	REVISED
	PLOT DATE - 01/06/22	DATE - 01/06/22	REVISED

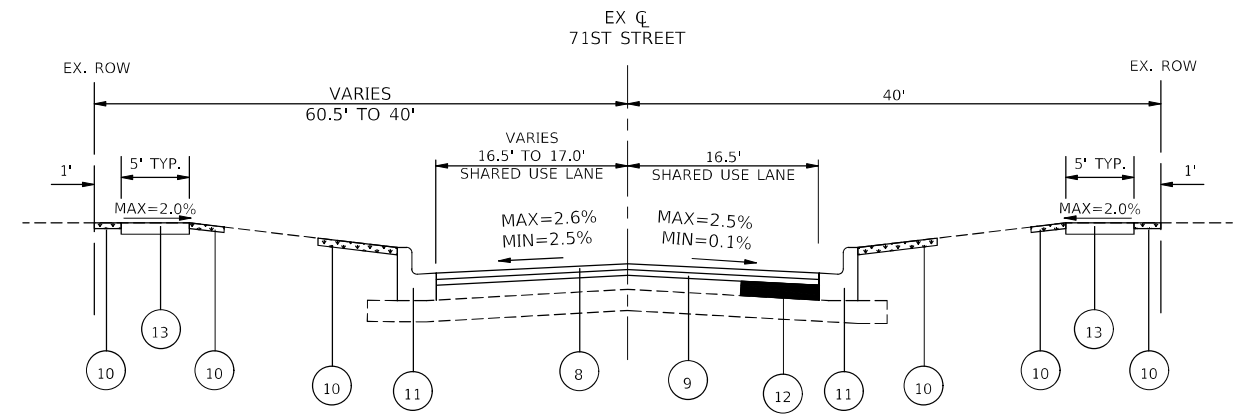
NOT TO SCALE SHEET NO. 1 OF 1 SHEETS STA. TO STA.

F.A.U. RTE.	SECTION	COUNTY	TOTAL SHEETS	SHEET NO.
1533 21-00116-00-RS			23	7
CONTRACT NO. 61J37				
		ILLINOIS	FED. AID PROJECT	



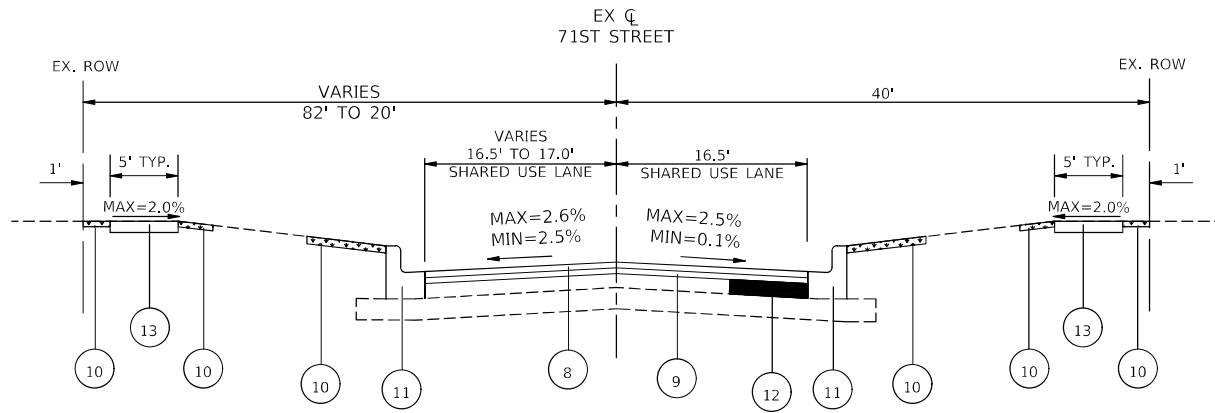
PROPOSED TYPICAL SECTION

STA. 1+00 TO STA. 2+49, 71ST STREET
 STA. 7+45 TO STA. 28+97.50, 71ST STREET



PROPOSED TYPICAL SECTION

STA. 5+64 TO STA. 7+45, 71ST STREET



PROPOSED TYPICAL SECTION

STA. 2+49 TO STA. 5+64, 71ST STREET

ROADWAY LANE USE NOTES

- ROUTE IS A SHARED USE ROADWAY FOR VEHICLE TRAFFIC AND BICYCLE TRAFFIC.
- SHARROW PAVEMENT MARKINGS TO BE INCLUDED IN BOTH DIRECTIONS OF TRAVEL WHERE SHOWN ON THE PLANS.

LEGEND

- ⑧ PROPOSED HMA SURFACE COURSE, IL-9.5, MIX "D", N50, 1 1/2"
- ⑨ PROPOSED POLYMERIZED HMA BINDER COURSE, IL-4.75, N50, 3/4"
- ⑩ PROPOSED SODDING, SALT TOLERANT & TOP SOIL FURNISH AND PLACE, 4" (LOCATIONS DETERMINED BY ENGINEER)
- ⑪ PROPOSED COMBINATION CONCRETE CURB & GUTTER, TYPE M3.12 REPLACEMENT, WHERE SHOWN ON PLANS AND AS DETERMINED IN THE FIELD BY ENGINEER
- ⑫ CLASS D PATCH (LOCATION AND DIMENSIONS DETERMINED BY ENGINEER), 6"
- ⑬ PROPOSED PORTLAND CEMENT CONCRETE SIDEWALK 5 INCH, SPECIAL, WHERE SHOWN ON PLAN AND AS DETERMINED IN THE FIELD BY ENGINEER

LEGEND

- CLASS D PATCH
- TURF RESTORATION

MIXTURES TABLE

MIXTURE TYPE	AIR VOIDS @ Ndes	QMP
ROADWAYS:		
HOT-MIX ASPHALT SURFACE COURSE, IL-9.5, MIX "D", N50, 1 1/2"	4% @ 50 GYR	LR 1030-2
POLYMERIZED HOT-MIX ASPHALT BINDER COURSE, IL-4.75, N50, 3/4"	3.5% @ 50 GYR	LR 1030-2
HMA DRIVEWAY PAVEMENT 3":		
HOT-MIX ASPHALT SURFACE COURSE, IL-9.5, MIX "D" N50 - 3" (IN 2 LIFTS)	4% @ 50 GYR	LR 1030-2
PATCHING:		
CLASS D PATCHES, (HMA BINDER IL-19.0) 6"	4% @ 50 GYR	LR 1030-2

QMP DESIGNATION: QUALITY CONTROL/QUALITY ASSURANCE (QC/QA)
 PER LR 1030-02

CONTRACTOR SHALL MILL FIRST BEFORE PATCHING

-THE UNIT WEIGHT USED TO CALCULATE ALL HMA SURFACE MIXTURE QUANTITIES IS 112 LBS/SQYD/IN.

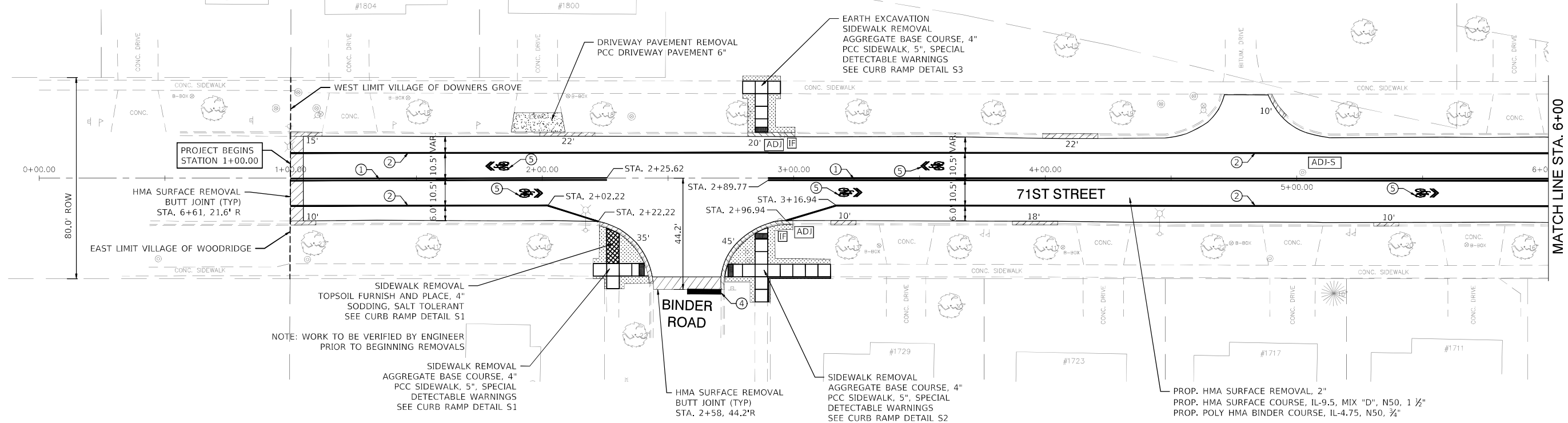
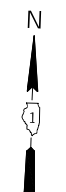
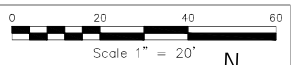
-THE "AC TYPE" FOR POLYMERIZED HMA MIXES SHALL BE "SBS/SBR PG 76 - 22" AND FOR NON-POLYMERIZED HMA THE "AC TYPE" SHALL BE "PG 64 - 22" UNLESS MODIFIED BY RECLAIMED MATERIALS SPECIFICATIONS.

**STATE OF ILLINOIS
 DEPARTMENT OF TRANSPORTATION**

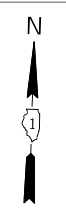
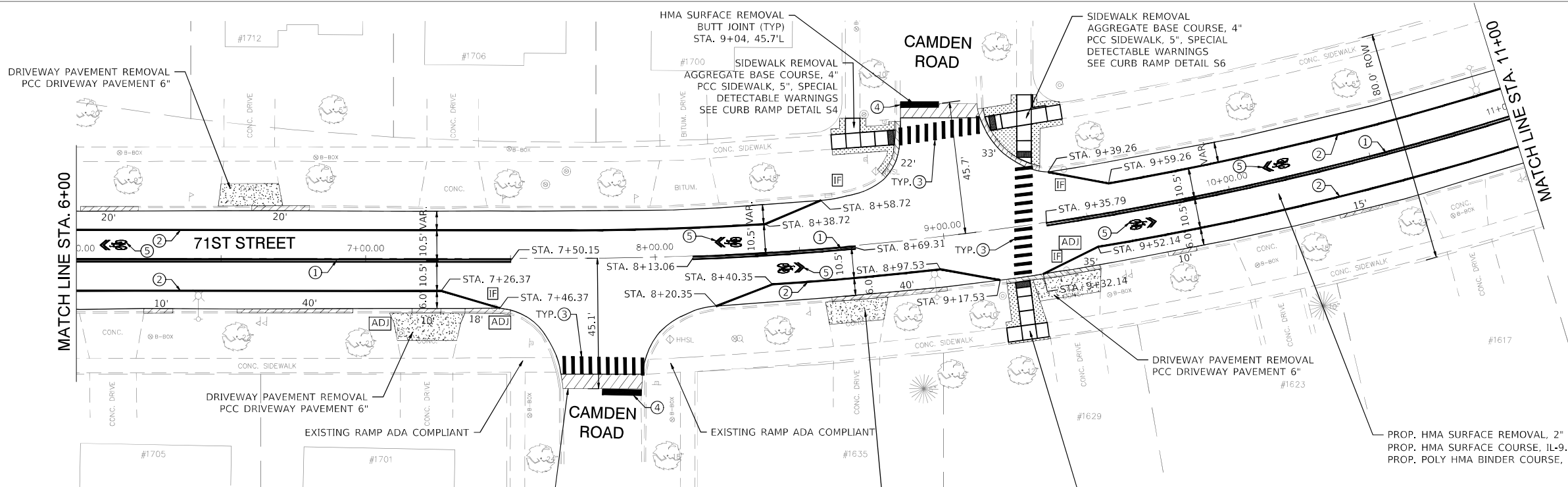
PROPOSED TYPICAL SECTIONS

FILE NAME =	USER NAME - USER	DESIGNED - NRH	REVISED
FILE NAME =		DRAWN - NRH	REVISED
	PLOT SCALE -	CHECKED - SWG	REVISED
	PLOT DATE - 01/26/22	DATE - 01/26/22	REVISED

NOT TO SCALE	SHEET NO. 1 OF 1 SHEETS	STA. TO STA.	F.A.U. RTE. 1533	SECTION 21-00116-00-RS	COUNTY DuPAGE	TOTAL SHEETS 23	SHEET NO. 8
			CONTRACT NO. 61J37				
			ILLINOIS FED. AID PROJECT				



MATCH LINE STA. 6+00



- LEGEND**
- REMOVE & REPLACE ADA RAMP
 - REMOVE SIDEWALK
 - DRAINAGE & UTILITY STRUCTURES TO BE ADJUSTED
 - SANITARY STRUCTURE TO BE ADJUSTED SEE DETAIL ON SHEET 16
 - INLET FILTERS
 - TOPSOIL, SOD RESTORATION
 - REMOVE & REPLACE EXISTING CURB AND GUTTER
 - REMOVE & REPLACE HMA DRIVEWAY
 - REMOVE & REPLACE PCC DRIVEWAY
- PAVEMENT MARKING LEGEND**
- ① 4" DOUBLE YELLOW THERMOPLASTIC LINE @ 11" C-C - SOLID
 - ② 4" WHITE THERMOPLASTIC LINE - SOLID
 - ③ 12" WHITE THERMOPLASTIC LINE - SOLID
 - ④ 24" WHITE THERMOPLASTIC LINE - SOLID
 - ⑤ LETTERS AND SYMBOLS - FULL SIZE

- NOTES**
1. CLASS D PATCHES, 6" AS DIRECTED BY THE ENGINEER.
 2. ALL EXISTING DRAINAGE STRUCTURES WHICH ARE TO BE ADJUSTED SHALL BE CLEANED IN ACCORDANCE WITH ARTICLE 602.15 OF THE STANDARD SPECIFICATIONS.
 3. TOPSOIL, SODDING LOCATION/PLACEMENT AS DIRECTED BY THE ENGINEER.

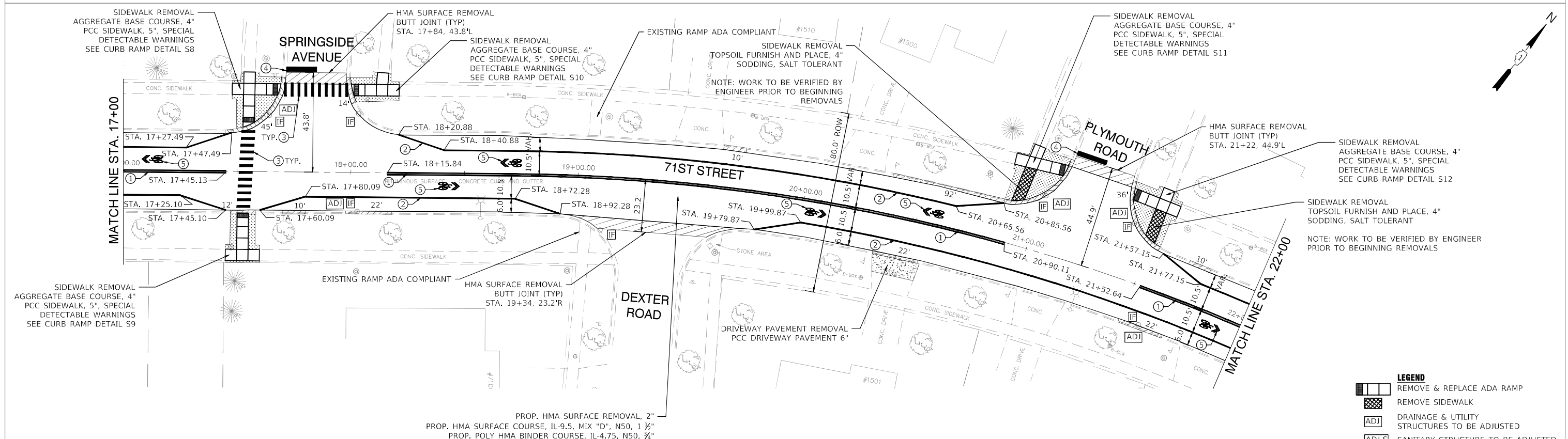
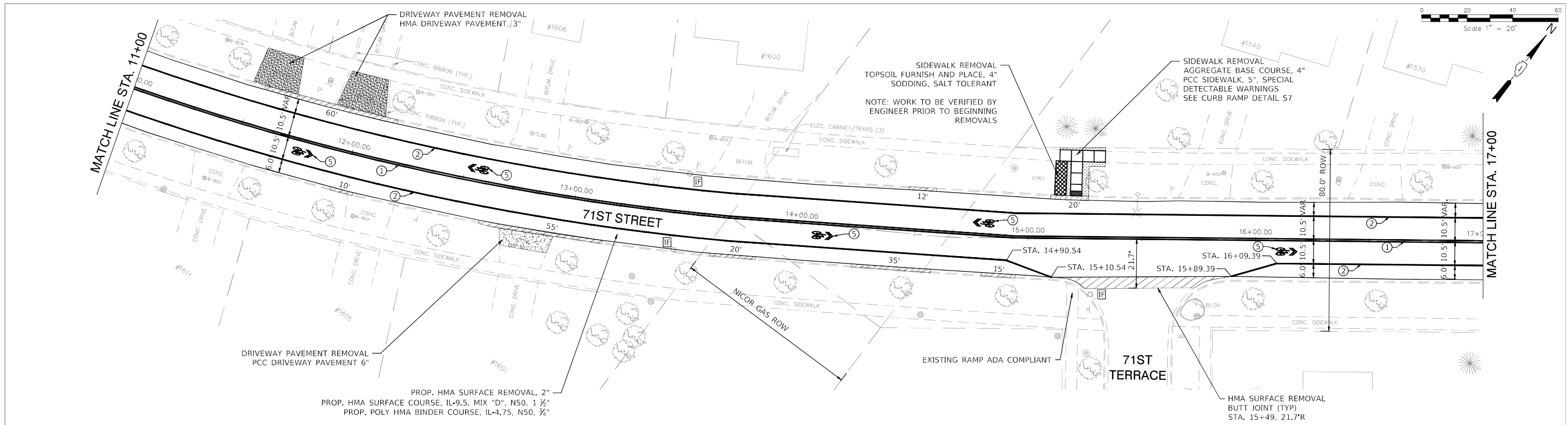
PROJECT STATION LIMITS
 PROJECT BEGINS STA. 1+00.00
 PROJECT ENDS STA. 28+97.50

**STATE OF ILLINOIS
 DEPARTMENT OF TRANSPORTATION**

PLAN SHEET (STA. 0+00 TO STA. 11+00)

FILE NAME =	USER NAME -- USER	DESIGNED -- NRH	REVISED
FILE NAME =		DRAWN -- NRH	REVISED
	PLOT SCALE --	CHECKED -- SWG	REVISED
	PLOT DATE -- 01/26/22	DATE -- 01/26/22	REVISED

SCALE: 1"=20'	SHEET NO. 1 OF 3 SHEETS	STA. 0+00 TO STA. 11+00	F.A.U. SECTION	TOTAL SHEETS	SHEET NO.
			1533 21-00116-00-RS	DuPAGE 23	9
			CONTRACT NO. 61J37		
			ILLINOIS FED. AID PROJECT		



- NOTES**
- CLASS D PATCHES, 6" AS DIRECTED BY THE ENGINEER.
 - ALL EXISTING DRAINAGE STRUCTURES WHICH ARE TO BE ADJUSTED SHALL BE CLEANED IN ACCORDANCE WITH ARTICLE 602.15 OF THE STANDARD SPECIFICATIONS.
 - TOPSOIL, SODDING LOCATION/PLACEMENT AS DIRECTED BY THE ENGINEER.

PROJECT STATION LIMITS
 PROJECT BEGINS STA. 1+00.00
 PROJECT ENDS STA. 28+97.50

- PAVEMENT MARKING LEGEND**
- ① 4" DOUBLE YELLOW THERMOPLASTIC LINE @ 11" C-C - SOLID
 - ② 4" WHITE THERMOPLASTIC LINE - SOLID
 - ③ 12" WHITE THERMOPLASTIC LINE - SOLID
 - ④ 24" WHITE THERMOPLASTIC LINE - SOLID
 - ⑤ LETTERS AND SYMBOLS - FULL SIZE

- LEGEND**
- [Symbol] REMOVE & REPLACE ADA RAMP
 - [Symbol] REMOVE SIDEWALK
 - [Symbol] DRAINAGE & UTILITY STRUCTURES TO BE ADJUSTED
 - [Symbol] SANITARY STRUCTURE TO BE ADJUSTED SEE DETAIL ON SHEET 16
 - [Symbol] INLET FILTERS
 - [Symbol] TOPSOIL, SOD RESTORATION
 - [Symbol] REMOVE & REPLACE EXISTING CURB AND GUTTER
 - [Symbol] REMOVE & REPLACE HMA DRIVEWAY
 - [Symbol] REMOVE & REPLACE PCC DRIVEWAY

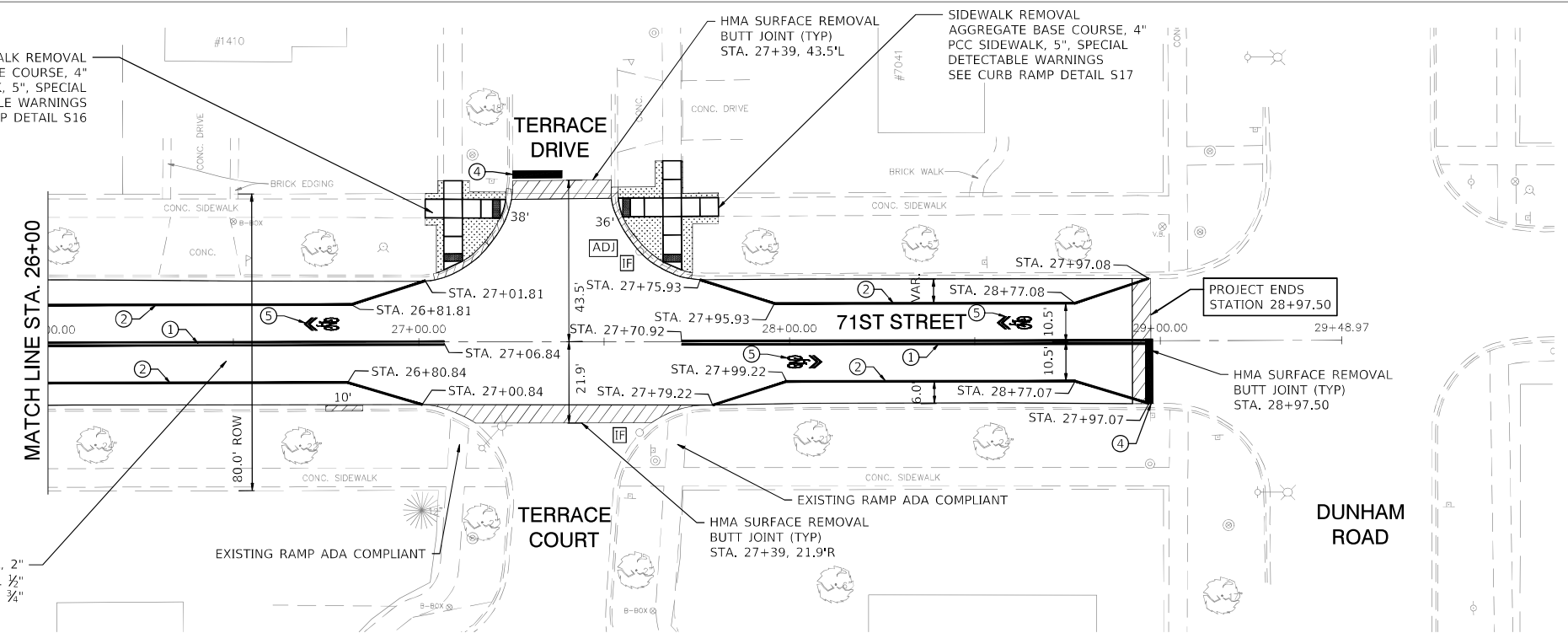
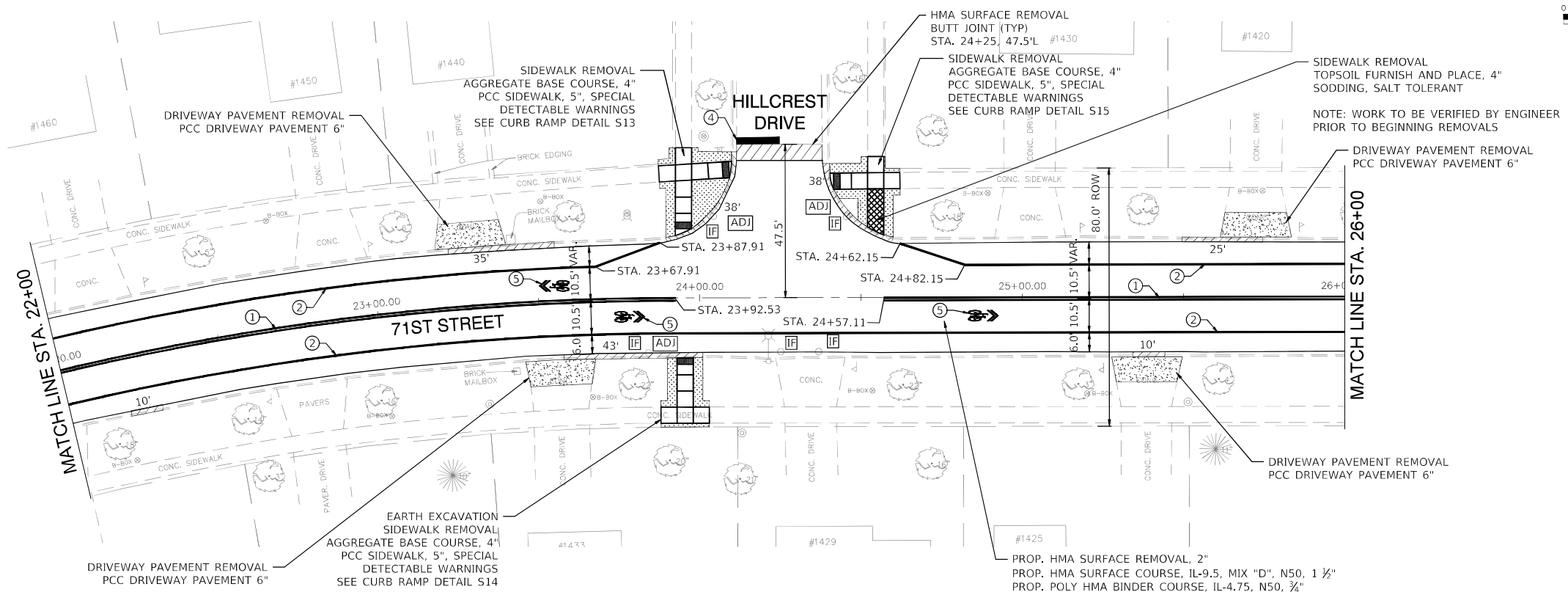
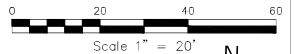
FILE NAME =	USER NAME -- USER	DESIGNED -- NRH	REVISED
FILE NAME =		DRAWN -- NRH	REVISED
	PLOT SCALE --	CHECKED -- SWG	REVISED
	PLOT DATE -- 01/26/22	DATE -- 01/26/22	REVISED

**STATE OF ILLINOIS
 DEPARTMENT OF TRANSPORTATION**

PLAN SHEET (STA. 11+00 TO STA. 22+00)

SCALE: 1"=20' SHEET NO. 2 OF 3 SHEETS STA. 11+00 TO STA. 22+00

F.A.U. RTE.	SECTION	COUNTY	TOTAL SHEETS	SHEET NO.
1533	21-00116-00-RS	DuPAGE	23	10
				CONTRACT NO. 61J37
			ILLINOIS	FED. AID PROJECT



NOTES

1. CLASS D PATCHES, 6" AS DIRECTED BY THE ENGINEER.
2. ALL EXISTING DRAINAGE STRUCTURES WHICH ARE TO BE ADJUSTED SHALL BE CLEANED IN ACCORDANCE WITH ARTICLE 602.15 OF THE STANDARD SPECIFICATIONS.
3. TOPSOIL, SODDING LOCATION/PLACEMENT AS DIRECTED BY THE ENGINEER.

PROJECT STATION LIMITS
 PROJECT BEGINS STA. 1+00.00
 PROJECT ENDS STA. 28+97.50

PAVEMENT MARKING LEGEND

- ① 4" DOUBLE YELLOW THERMOPLASTIC LINE @ 11" C-C - SOLID
- ② 4" WHITE THERMOPLASTIC LINE - SOLID
- ③ 12" WHITE THERMOPLASTIC LINE - SOLID
- ④ 24" WHITE THERMOPLASTIC LINE - SOLID
- ⑤ LETTERS AND SYMBOLS - FULL SIZE

LEGEND

- REMOVE & REPLACE ADA RAMP
- REMOVE SIDEWALK
- DRAINAGE & UTILITY STRUCTURES TO BE ADJUSTED
- SANITARY STRUCTURE TO BE ADJUSTED SEE DETAIL ON SHEET 16
- INLET FILTERS
- TOPSOIL, SOD RESTORATION
- REMOVE & REPLACE EXISTING CURB AND GUTTER
- REMOVE & REPLACE HMA DRIVEWAY
- REMOVE & REPLACE PCC DRIVEWAY

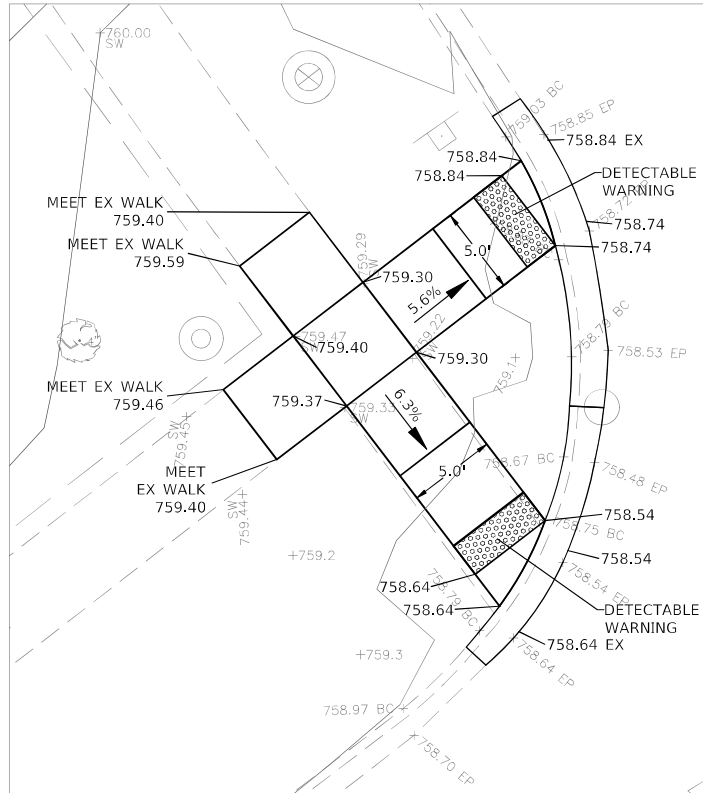
FILE NAME =	USER NAME -- USER	DESIGNED -- NRH	REVISED
FILE NAME =		DRAWN -- NRH	REVISED
	PLOT SCALE --	CHECKED -- SWG	REVISED
	PLOT DATE -- 01/26/22	DATE -- 01/26/22	REVISED

**STATE OF ILLINOIS
 DEPARTMENT OF TRANSPORTATION**

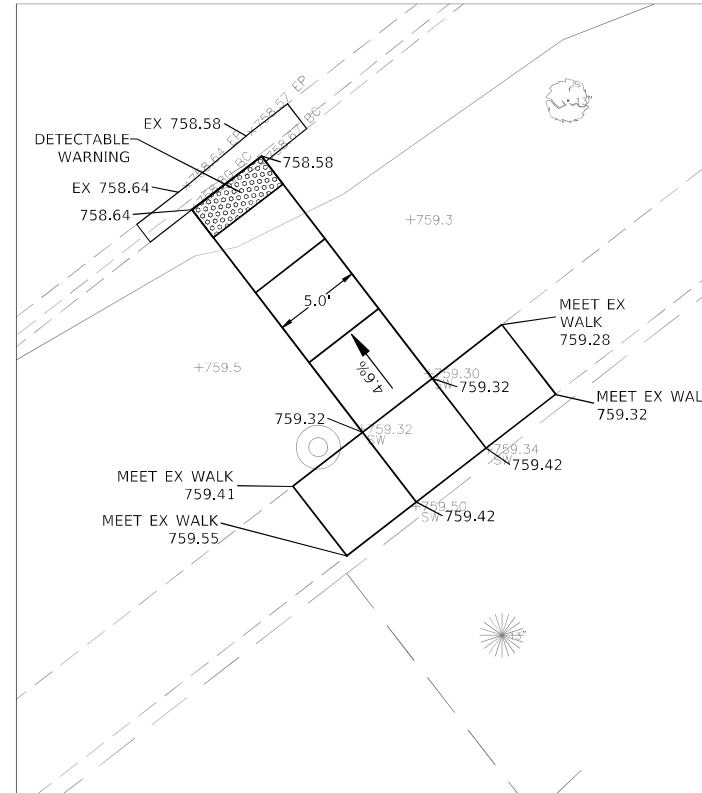
PLAN SHEET (STA. 22+00 TO STA. 29+49)

SCALE: 1"=20' SHEET NO. 3 OF 3 SHEETS STA. 22+00 TO STA. 29+49

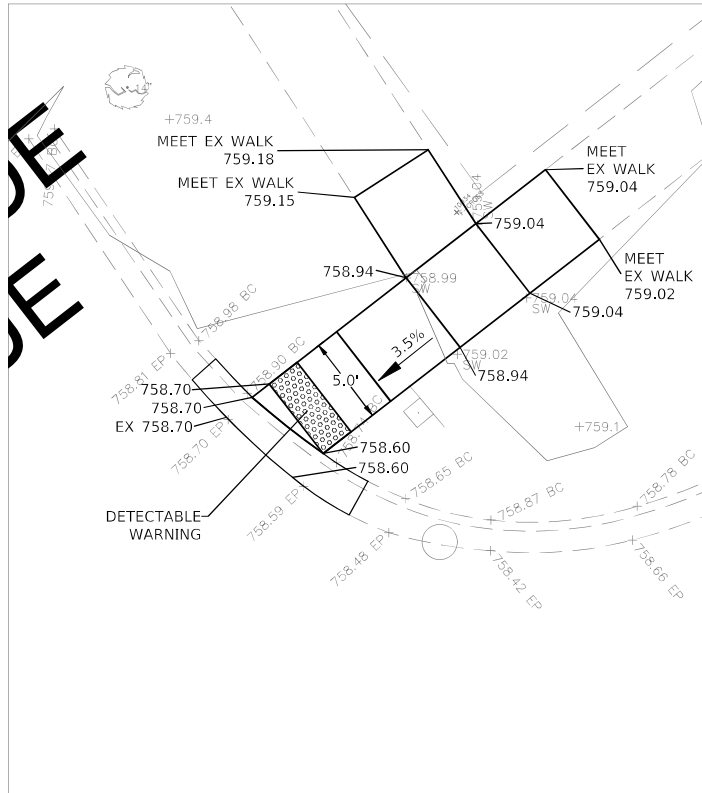
F.A.U. RTE.	SECTION	COUNTY	TOTAL SHEETS	SHEET NO.
1533	21-00116-00-RS	DuPAGE	23	11
				CONTRACT NO. 61J37
			ILLINOIS	FED. AID PROJECT



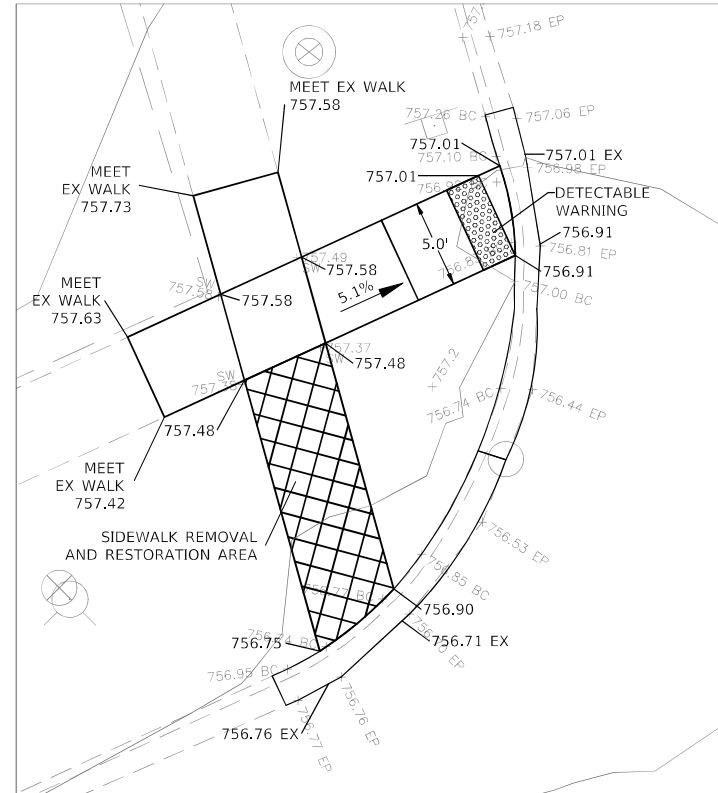
**CURB RAMP DETAIL S8
STA. 17+56 - LEFT SIDE**



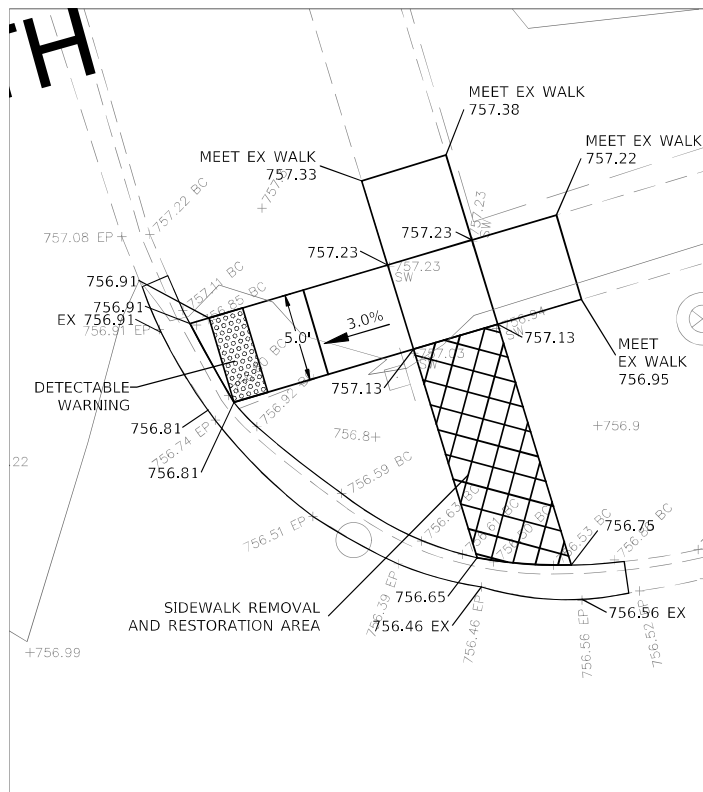
**CURB RAMP DETAIL S9
STA. 17+55 - RIGHT SIDE**



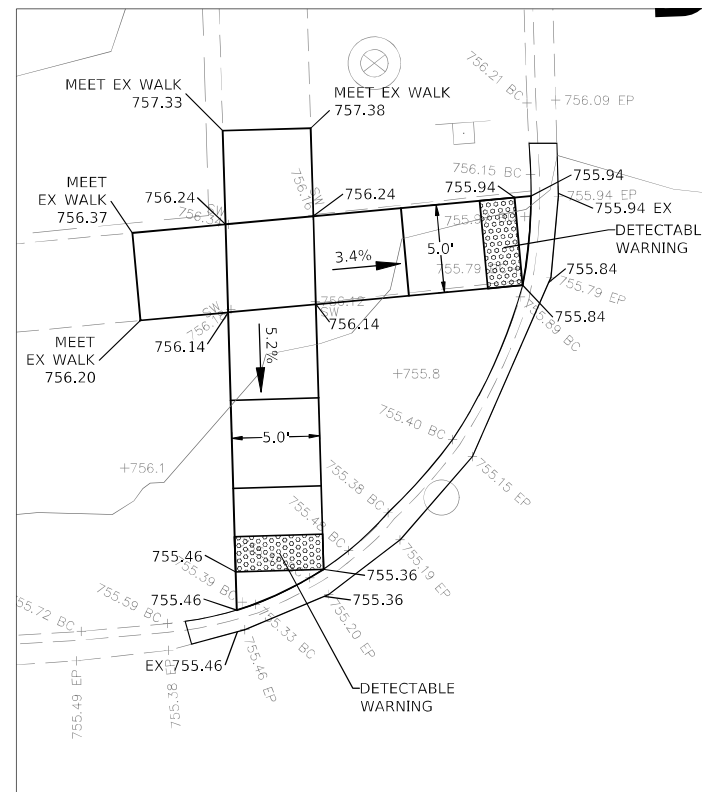
**CURB RAMP DETAIL S10
STA. 18+13 - LEFT SIDE**



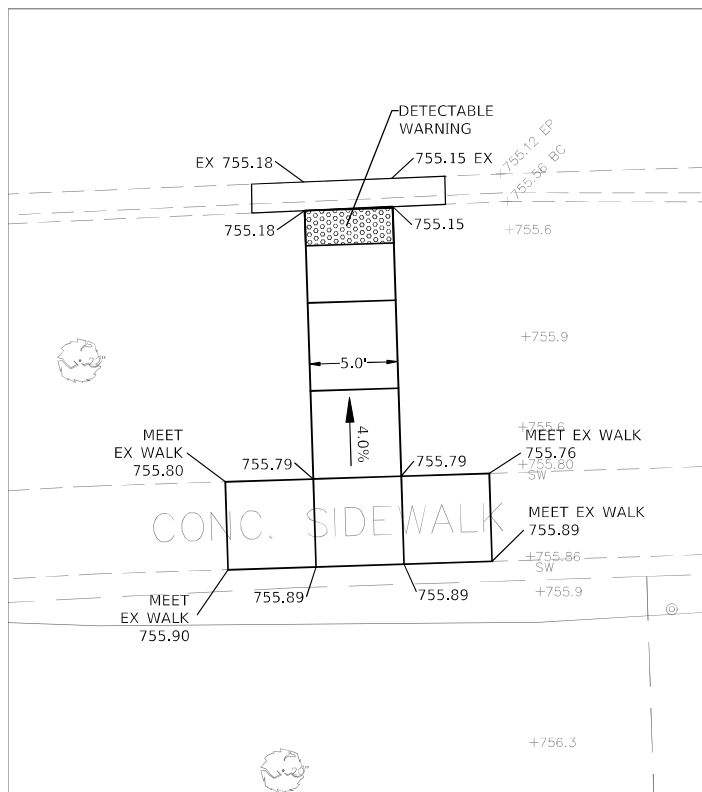
**CURB RAMP DETAIL S11
STA. 20+93 - LEFT SIDE**



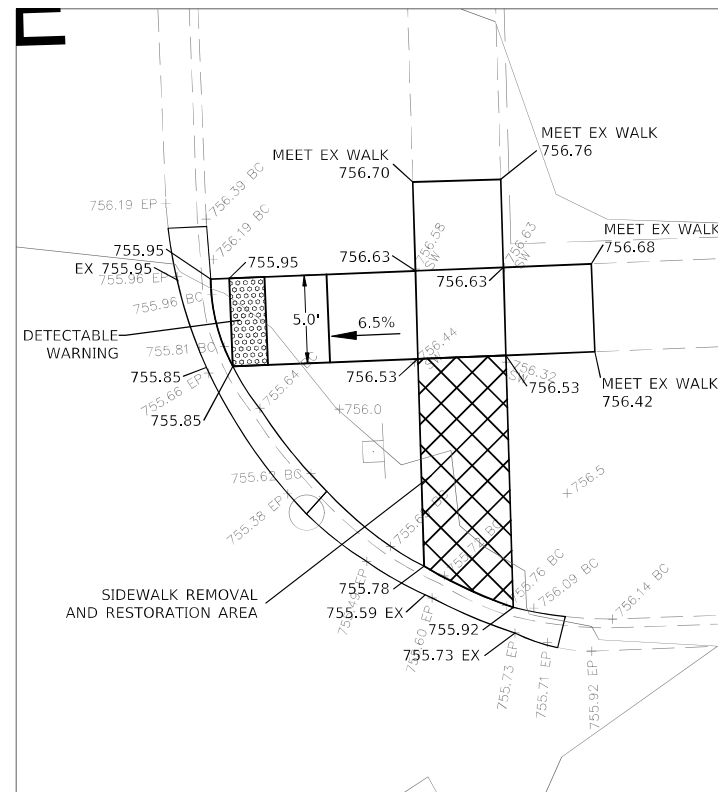
**CURB RAMP DETAIL S12
STA. 21+50 - LEFT SIDE**



**CURB RAMP DETAIL S13
STA. 23+95 - LEFT SIDE**



**CURB RAMP DETAIL S14
STA. 23+95 - RIGHT SIDE**



**CURB RAMP DETAIL S15
STA. 24+55 - LEFT SIDE**

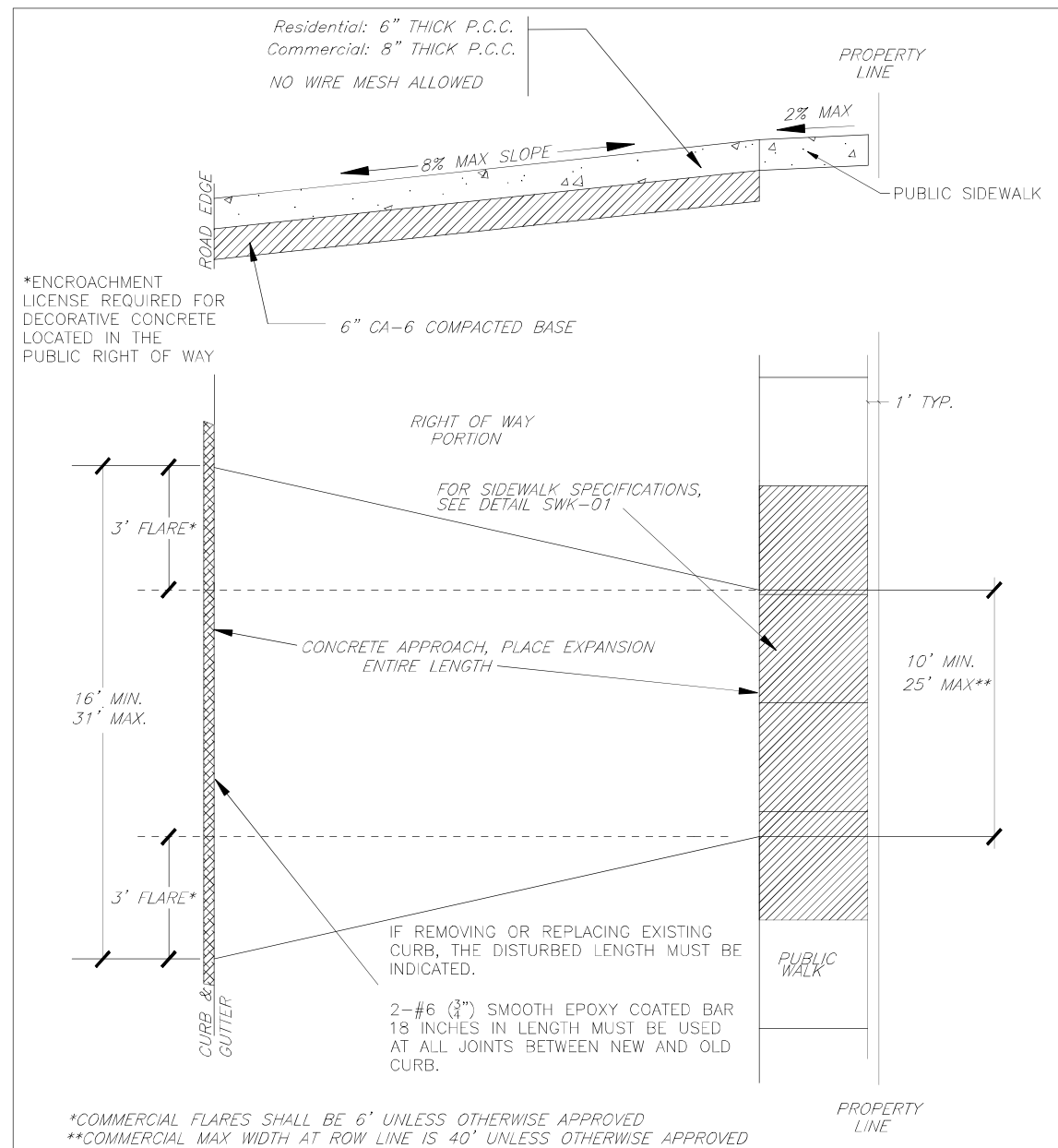
FILE NAME =	USER NAME - USER	DESIGNED - NRH	REVISED
FILE NAME =		DRAWN - NRH	REVISED
		CHECKED - SWG	REVISED
PLOT SCALE -		DATE - 12/16/22	REVISED

**STATE OF ILLINOIS
DEPARTMENT OF TRANSPORTATION**

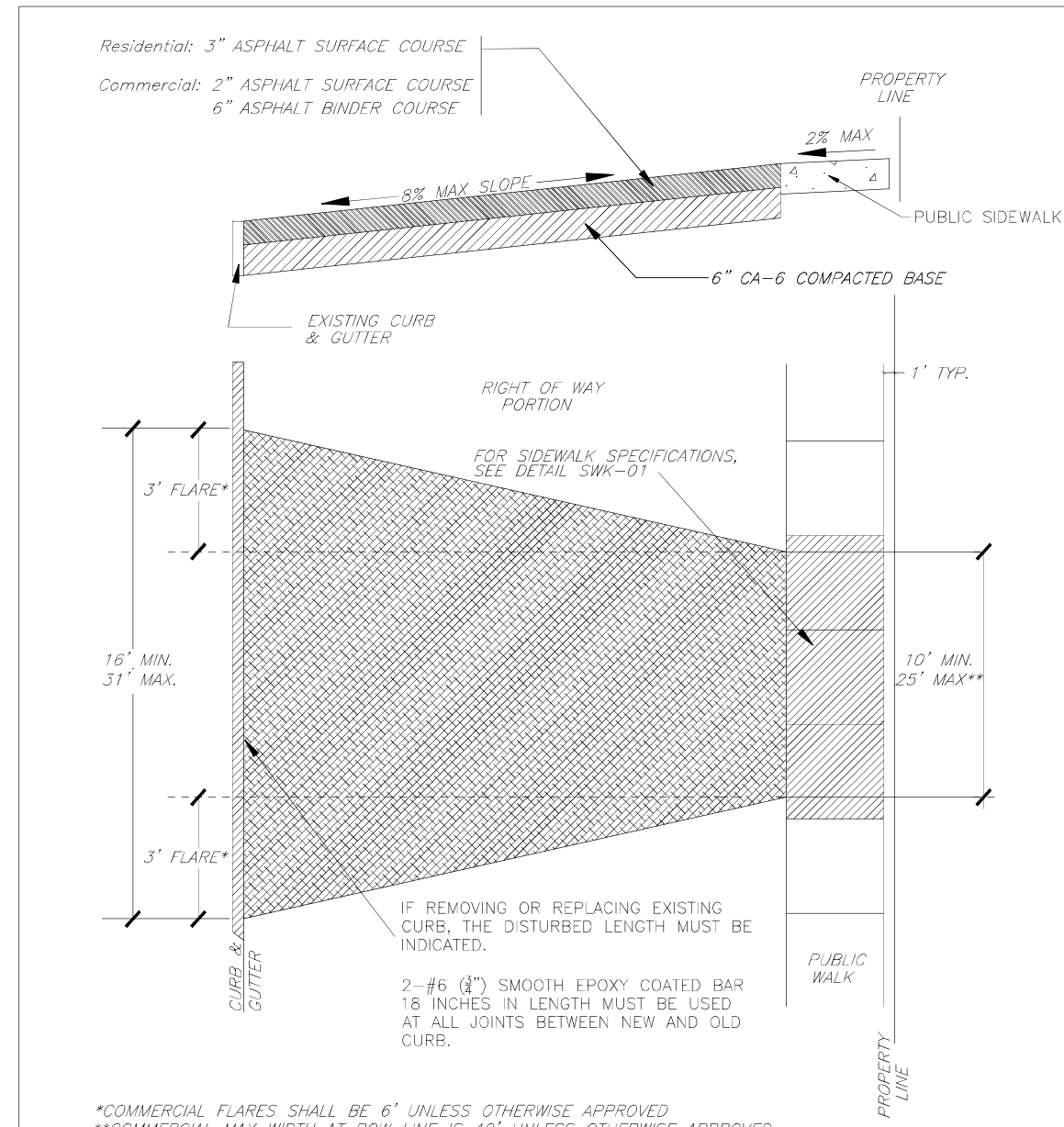
CURB RAMP DETAILS (S8 TO S15)

SCALE: 1"=5' SHEET NO. 2 OF 3 SHEETS STA. TO STA.

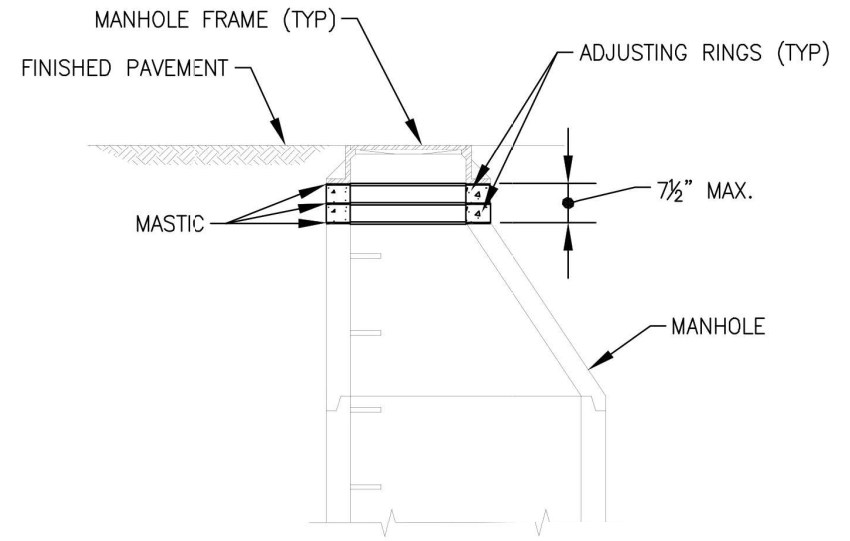
F.A.U. RTE.	SECTION	COUNTY	TOTAL SHEETS	SHEET NO.
1533 21-00116-00-RS	DuPAGE	ILLINOIS	23	13
CONTRACT NO. 61J37				
FED. AID PROJECT				



N.T.S.	DATE	REVISIONS	DRAWN BY	APPVD BY	STANDARD DETAIL
	03/02/20		N.R.H.	J.M.W.	CONCRETE APPROACH WITH CURB
DRAWING NO. PVT-09					
I:\LIBRARY\DETAILS\PAVEMENT\PVT-09					

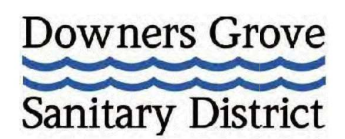


N.T.S.	DATE	REVISIONS	DRAWN BY	APPVD BY	STANDARD DETAIL
	01/01/19		N.R.H.	J.M.W.	ASPHALT APPROACH WITH CURB
DRAWING NO. PVT-03					
I:\LIBRARY\DETAILS\PAVEMENT\PVT-03					



THIS METHOD SHALL BE USED FOR ALL MANHOLES WHICH WILL HAVE LESS THAN SEVEN AND ONE-HALF (7-1/2") INCHES OF ADJUSTMENT BETWEEN THE TOP OF THE CONE AND THE BOTTOM OF THE FRAME WHEN SET AT FINISHED GRADE. TO RAISE THE FRAME, ADJUSTMENT SHALL BE MADE USING PRECAST REINFORCED CONCRETE RINGS. CONCRETE BLOCKS OR BRICKS SHALL NOT BE USED. THE SPACES BETWEEN THE CONE, RINGS AND FRAME SHALL BE COMPLETELY SEALED WITH PREFORMED BITUMINOUS MASTIC (EASY STIK MORTAR SHALL NOT BE USED. TO LOWER THE FRAME, EXISTING ADJUSTMENTS SHALL BE REMOVED AND THE SPACE BETWEEN THE FRAME AND THE CONE SHALL BE COMPLETELY SEALED WITH PREFORMED BITUMINOUS MASTIC GASKET. IF THE MANHOLE WOULD HAVE SEVEN AND ONE-HALF (7-1/2") INCHES OR MORE OF ADJUSTMENTS WHEN SET AT THE FINISHED GRADE OR IF THE FRAME MUST BE LOWERED BY MORE THAN THE AMOUNT OF EXISTING ADJUSTMENT, THE MANHOLE SHALL BE RECONSTRUCTED. REFER TO DOWNERS GROVE SANITARY DISTRICT SPECIFICATIONS FOR MANHOLE RECONSTRUCTION. THE DOWNERS GROVE SANITARY DISTRICT SHALL BE NOTIFIED OF MANHOLES TO BE ADJUSTED PRIOR TO BEGINNING CONSTRUCTION. ONCE COMPLETED, NO SUCH ADJUSTMENT SHALL BE BACKFILLED WITHOUT INSPECTION BY THE DOWNERS GROVE SANITARY DISTRICT.

FRAMES & LIDS TO
BE ADJUSTED
(SPECIAL)



REV. 2-1-15
REV. 8-12-97
REV. 10-20-84

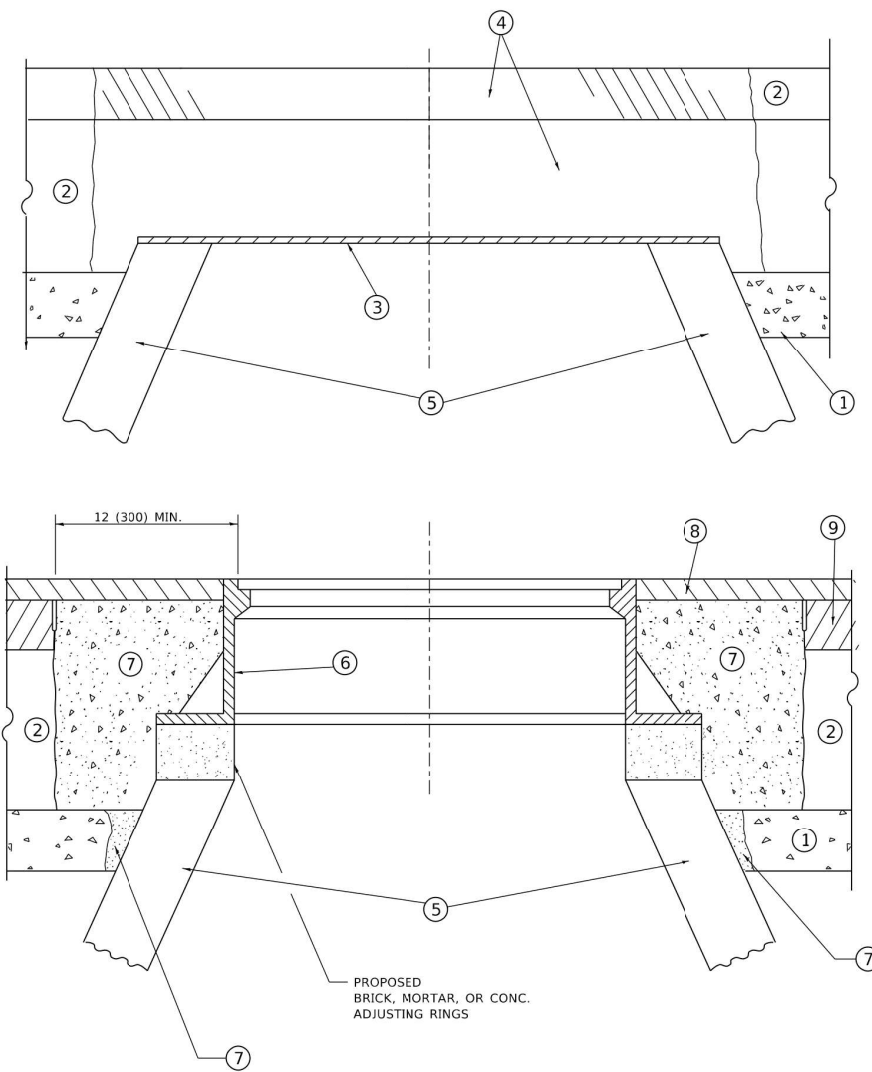
FILE NAME =	USER NAME - USER	DESIGNED - NRH	REVISED
FILE NAME =		DRAWN - NRH	REVISED
	PLOT SCALE -	CHECKED - SWG	REVISED
	PLOT DATE - 12/16/22	DATE - 12/16/22	REVISED

STATE OF ILLINOIS
DEPARTMENT OF TRANSPORTATION

VILLAGE DETAILS

NOT TO SCALE SHEET NO. 2 OF 2 SHEETS STA. TO STA.

F.A.U. RTE.	SECTION	COUNTY	TOTAL SHEETS	SHEET NO.
1533	21-00116-00-RS	DuPAGE	23	16
ILLINOIS			CONTRACT NO. 61J37	
			FED. AID PROJECT	



**DETAILS FOR FRAMES AND LIDS ADJUSTMENT
WITH MILLING**

NOTES

1. EXISTING BROKEN FRAMES AND LIDS SHALL BE REMOVED AND DISPOSED OF BY THE CONTRACTOR AND SHALL BE REPLACED AS DIRECTED BY THE ENGINEER. REPLACEMENT FRAMES AND LIDS WILL BE PAID FOR IN ACCORDANCE WITH ARTICLE 109.04 OF THE STANDARD SPECIFICATIONS UNLESS A SEPARATE PAY ITEM HAS BEEN PROVIDED.
2. IF THE EXISTING LIDS ARE OPEN, THE FRAME WILL BE ADJUSTED TO THE ELEVATION OF THE MILLED PAVEMENT SURFACE PRIOR TO THE MILLING OPERATION. THE FRAME WILL NOT BE REMOVED AND COVERED BY THE METAL PLATE.
3. CITY OF CHICAGO CASTINGS ARE THE PROPERTY OF THE CITY AND THE CONTRACTOR SHALL NOTIFY THE CITY FOR REMOVAL AND DISPOSITION OF THE CASTINGS.
4. THE METAL PLATE USED TO COVER THE STRUCTURE SHALL REMAIN THE PROPERTY OF THE CONTRACTOR.

CONSTRUCTION PROCEDURES

- STAGE 1 (BEFORE PAVEMENT MILLING)**
- A) REMOVE A MINIMUM OF 12 (300) OF THE PAVEMENT FROM AROUND THE STRUCTURE.
 - B) REMOVE THE EXISTING FRAME AND LID FROM THE STRUCTURE.
 - C) COVER THE STRUCTURE OPENING WITH A 36 (900) DIAMETER METAL PLATE.
 - D) BACKFILL WITH CRUSHED STONE AND HMA SURFACE MIX APPROVED BY THE ENGINEER. (MIN. 1 1/2 (40) HMA TO REMAIN AFTER MILLING).

- STAGE 2 (AFTER PAVEMENT MILLING)**
- A) REMOVE THE HMA SURFACE MIX AND CRUSHED STONE.
 - B) INSTALL THE FRAME AND LID; ADJUST THE FRAME TO ITS FINAL SURFACE ELEVATION.
 - C) THE SURROUNDING SPACE SHALL BE FILLED WITH CLASS*PP-1 CONCRETE TO THE ELEVATION OF THE SURFACE OF THE EXISTING BASE COURSE OR THE BINDER COURSE.
- * UNLESS OTHERWISE SPECIFIED IN THE PLANS.

THE PROCEDURE EXPLAINED ABOVE SHALL CONFORM TO THE APPLICABLE PORTIONS OF SECTIONS 353, 406, 602, AND 603 OF THE STANDARD SPECIFICATIONS EXCEPT THAT "THE CONTRACTOR SHALL ADJUST THE STRUCTURES TO THE FINISHED PAVEMENT ELEVATION NO MORE THAN 5 CALENDAR DAYS PRIOR TO PLACEMENT OF THE FINAL LIFT OF SURFACE UNLESS APPROVED BY THE ENGINEER."

LEGEND

- | | |
|--|-------------------------------|
| ① SUB-BASE GRANLLAR MATERIAL | ⑥ FRAME AND LID (SEE NOTES) |
| ② EXISTING PAVEMENT | ⑦ CLASS*PP-1 CONCRETE |
| ③ 36 (900) DIAMETER METAL PLATE | ⑧ PROPOSED HMA SURFACE COURSE |
| ④ PROPOSED CRUSHED STONE AND HMA SURFACE MIX | ⑨ PROPOSED HMA BINDER COURSE |
| ⑤ EXISTING STRUCTURE | |

LOCATION OF STRUCTURES

THE CONTRACTOR WILL BE REQUIRED TO KEEP A RECORD OF THE LOCATIONS OF THE BURIED STRUCTURES ACCORDING TO THE STATION AND DISTANCE LEFT OR RIGHT OF THE CENTERLINE OF PAVEMENT. UPON COMPLETION OF THE WORK, THE CONTRACTOR WILL DELIVER THE RECORD TO THE ENGINEER.

BASIS OF PAYMENT

1. REMOVING FRAMES AND LIDS ON DRAINAGE AND UTILITY STRUCTURES IN THE PAVEMENT PRIOR TO MILLING, AND ADJUSTING TO FINAL GRADE PRIOR TO PLACING THE SURFACE COURSE, WILL BE PAID FOR AT THE CONTRACT UNIT PRICE EACH FOR "FRAMES AND LIDS TO BE ADJUSTED (SPECIAL)."
2. THIS WORK WILL NOT BE PAID FOR WHEN DRAINAGE AND UTILITY STRUCTURES ARE SPECIFIED FOR PAYMENT AS STRUCTURE RECONSTRUCTION.
3. NEW FRAMES AND LIDS, WHEN SPECIFIED, WILL BE PAID FOR SEPARATELY.
4. WHEN STRUCTURES ARE TO BE ADJUSTED OR RECONSTRUCTED, THE LOWERING AND RAISING OF THE FRAMES AND LIDS WILL NOT BE PAID FOR SEPARATELY BUT WILL BE INCLUDED IN THE COST OF THE CORRESPONDING PAY ITEM.

ALL DIMENSIONS ARE IN INCHES (MILLIMETERS) UNLESS OTHERWISE SHOWN

MODEL: Default
FILE NAME: p:\w\l\paw_bentley.com\p\w\ddt\Documents\DOT_Offices\Bhirc\1\Project\305\54547234\CAD\DWG\CAD\Sheet\08.dgn

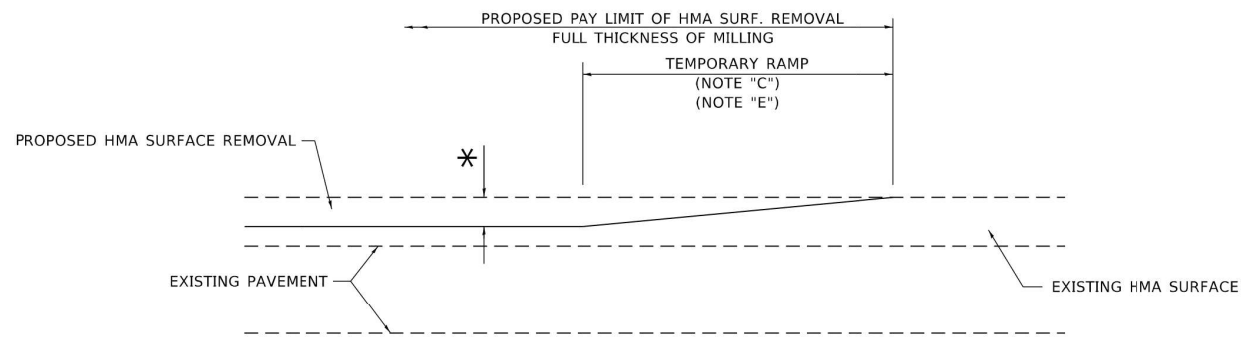
USER NAME = Lawrence.DeManche	DESIGNED - R. SHAH	REVISED - R. BORO 01-01-07
	DRAWN -	REVISED - R. BORO 03-09-11
PLOT SCALE = 100.0000' / in.	CHECKED -	REVISED - R. BORO 12-06-11
PLOT DATE = 11/18/2022	DATE - 10-25-94	REVISED - K. SMITH 11-18-22

**STATE OF ILLINOIS
DEPARTMENT OF TRANSPORTATION**

**DETAILS FOR
FRAMES AND LIDS ADJUSTMENT WITH MILLING**

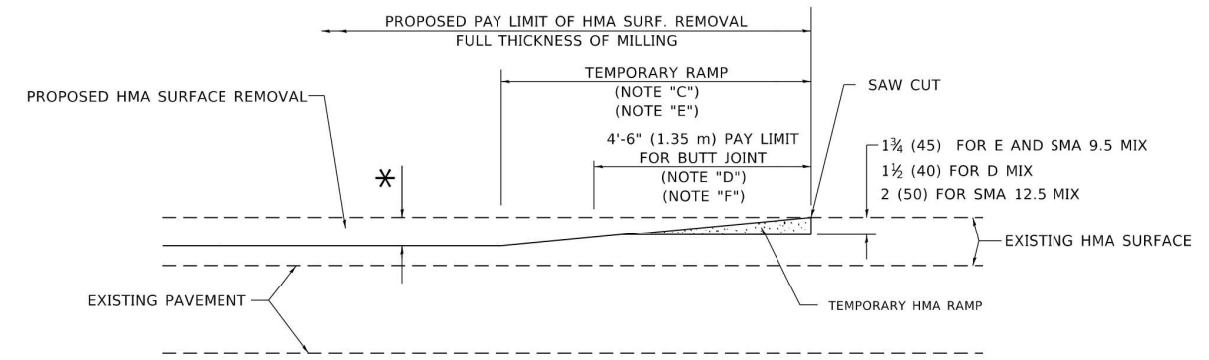
SCALE: NONE SHEET 1 OF 1 SHEETS STA. TO STA.

F.A.U. RTE. 1533	SECTION 21-00116-00-RS	COUNTY DuPAGE	TOTAL SHEETS 23	SHEET NO. 17
BD600-03 (BD-08)		CONTRACT NO. 61J37		
ILLINOIS FED. AID PROJECT				



MILLED TEMPORARY RAMP
(FOR BUTT JOINT AND HMA TAPER SEE DETAIL BELOW)

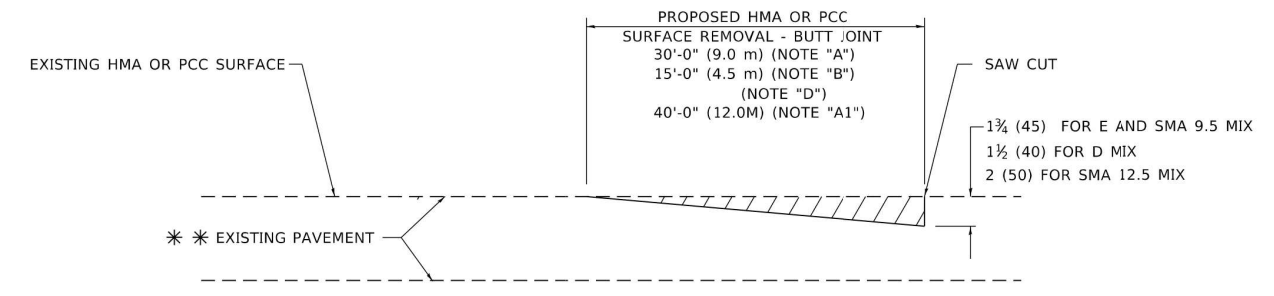
OPTION 1



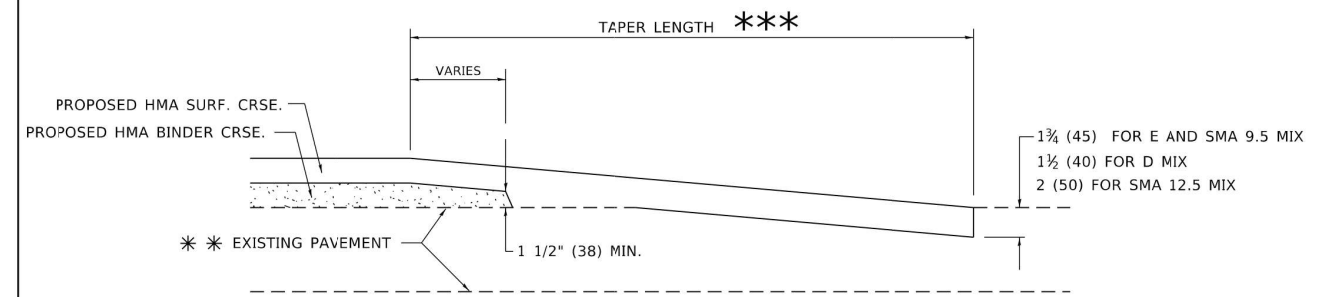
HMA CONSTRUCTED TEMPORARY RAMP
(FOR BUTT JOINT AND HMA TAPER SEE DETAIL BELOW)

OPTION 2

TYPICAL TEMPORARY RAMP



BUTT JOINT DETAIL



HMA TAPER DETAIL

TYPICAL BUTT JOINT AND HMA TAPER FOR RESURFACING ONLY

*** PC CONCRETE, HMA OR HMA RESURFACED PAVEMENT.

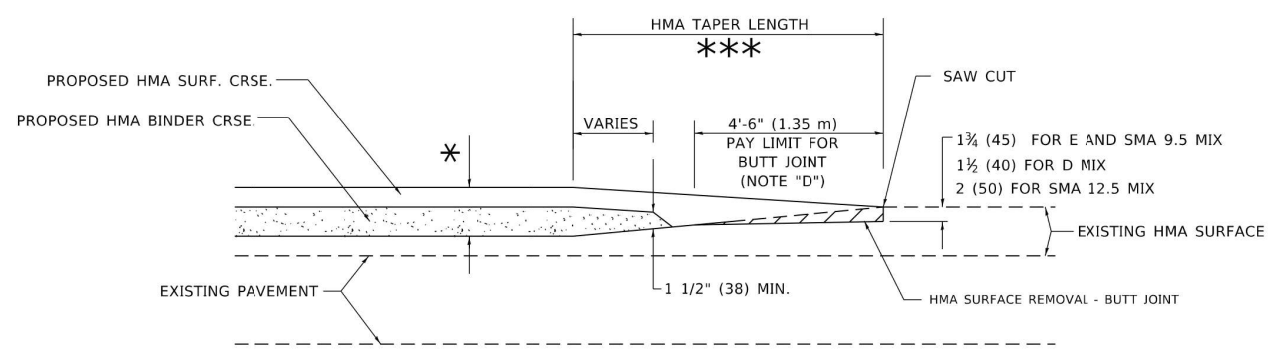
GENERAL NOTES

- A. MAINLINE ARTERIAL ROADWAYS AND MAJOR SIDE ROADS.
- A1. INTERSTATES
- B. MINOR SIDE ROADS.
- C. THE TEMP. RAMP SHALL BE CONSTRUCTED IMMEDIATELY UPON REMOVAL OF THE EXISTING HMA SURFACE.
- D. THE BUTT JOINT SHALL BE CONSTRUCTED IMMEDIATELY PRIOR TO PLACING THE PROPOSED HMA COURSES.
- E. TAPER THE TEMP. RAMP AT A RATE OF 3' - 4" (1.02m) PER 1 INCH (25 mm) OF MILLING THICKNESS.
* SEE TYPICAL SECTIONS FOR MILLING THICKNESS.
- F. SEE ARTICLE 406.08 AND 406.14 OF THE STANDARD SPECIFICATIONS FOR "HMA AND/OR PCC SURFACE REMOVAL, BUTT JOINT".
*** 20'-0" (6.1 m) PER 1 (25) RESURFACING (NOTE "A")
10'-0" (3.0 m) PER 1 (25) RESURFACING (NOTE "B")

BASIS OF PAYMENT

- 1. THE BUTT JOINT WILL BE PAID FOR AT THE CONTRACT UNIT PRICE PER SQUARE YARD (SQUARE METER) FOR "HOT-MIX ASPHALT SURFACE REMOVAL - BUTT JOINT" OR FOR "PORTLAND CEMENT CONCRETE SURFACE REMOVAL- BUTT JOINT".
- 2. THE TEMPORARY RAMP AND SAW CUT SHALL BE INCLUDED IN THE UNIT COST FOR HMA OR PCC SURFACE REMOVAL-BUTT JOINT.

ALL DIMENSIONS ARE IN INCHES (MILLIMETERS) UNLESS OTHERWISE SHOWN.



BUTT JOINT AND HMA TAPER

TYPICAL BUTT JOINT AND HMA TAPER FOR MILLING AND RESURFACING

MODEL: Default
FILE NAME: \\n:\work\paw_bentley.com\paw\DOT\Documents\DOT_Offices\Bhirc_1\Projects\B05\B05\2x34\CAD\Bentley\Bentley\B05.dgn

USER NAME = Lawrence.DeManche	DESIGNED - M. DE YONG	REVISED - A. ABBAS 03-21-97
	DRAWN -	REVISED - M. GOMEZ 04-06-01
PLOT SCALE = 100.0000' / in.	CHECKED -	REVISED - R. BORO 01-01-07
PLOT DATE = 11/18/2022	DATE - 06-13-90	REVISED - K. SMITH 11-18-22

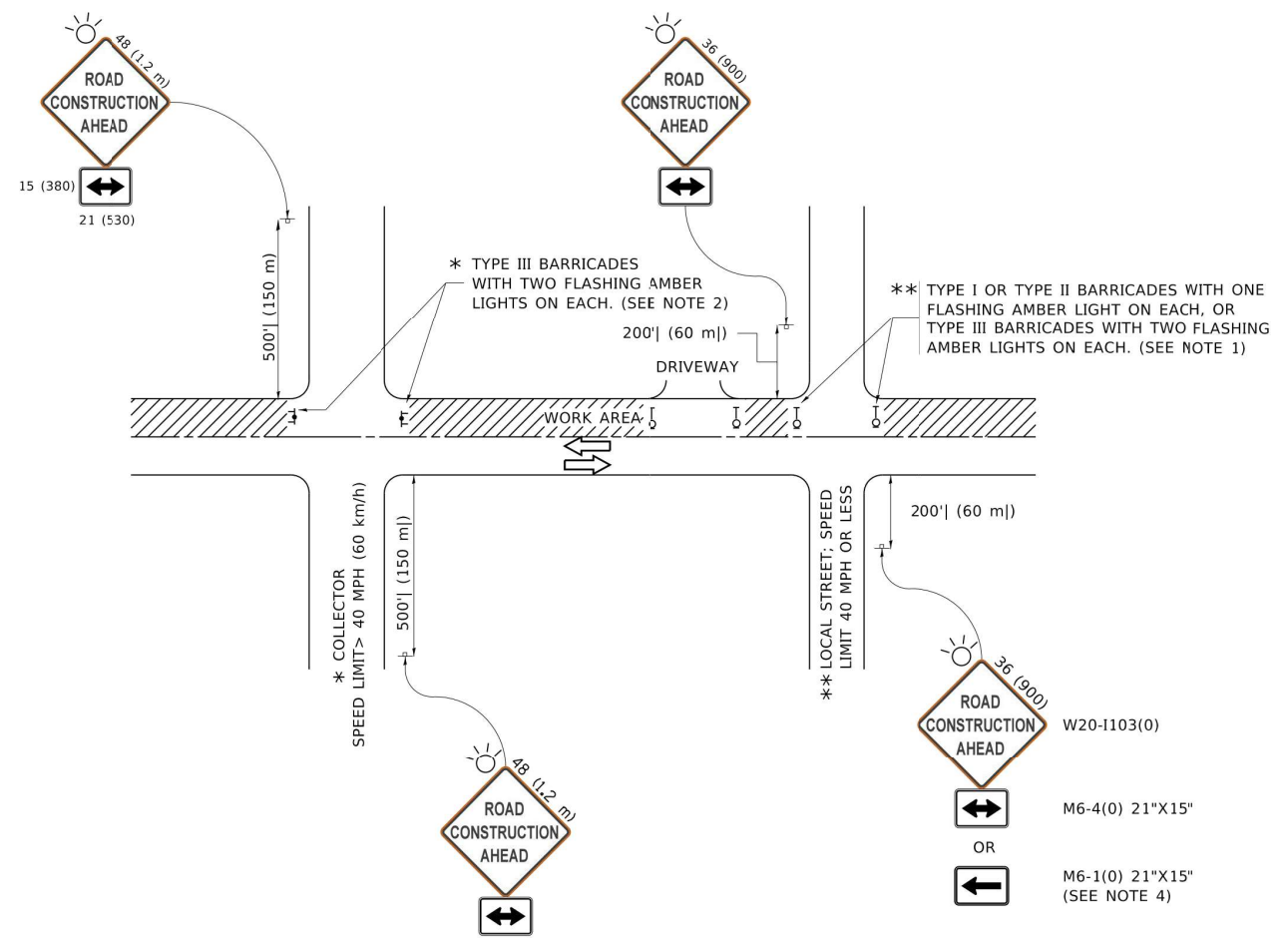
**STATE OF ILLINOIS
DEPARTMENT OF TRANSPORTATION**

BUTT JOINT AND HMA TAPER DETAILS

SCALE: NONE SHEET 1 OF 1 SHEETS STA. TO STA.

F.A.U. RTE. 1533	SECTION 21-00116-00-RS	COUNTY DuPAGE	TOTAL SHEETS 23	SHEET NO. 19
BD400-05 BD-32		CONTRACT NO. 61J37		
ILLINOIS FED. AID PROJECT				

MODEL: Default
 FILE NAME: p:\1108481\DOT\TEG\Illinois.gov\FWIDOT\Documents\DOT Offices\District_1\Projects\Dist5022x34\CAD\Bata\CAD\Sheet\TC10.dgn

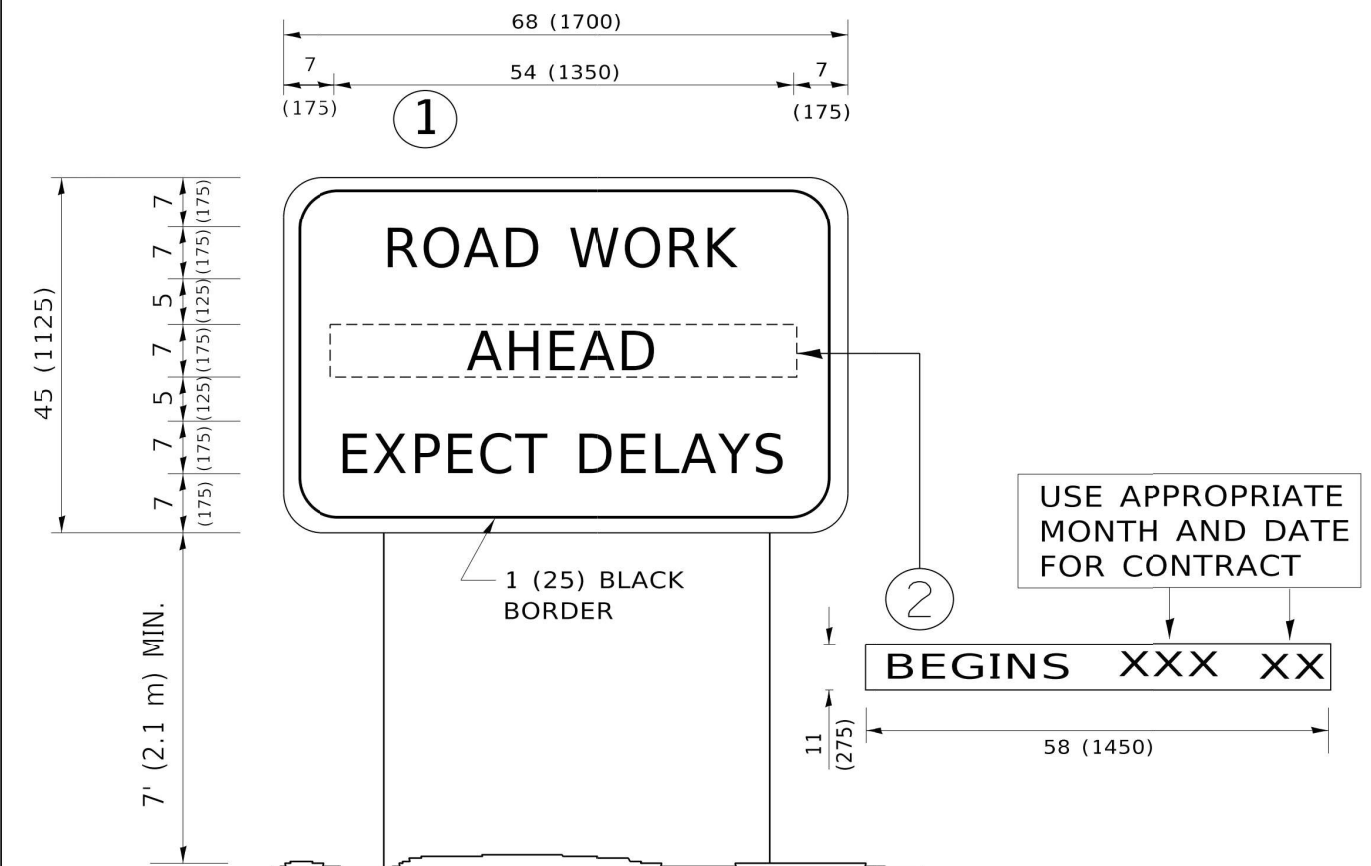


NOTES:

- SIDE ROAD WITH A SPEED LIMIT OF 40 MPH (60 km/h) OR LESS AS SHOWN ON THE DRAWING AND AS DIRECTED BY THE ENGINEER:
 - ONE "ROAD CONSTRUCTION AHEAD" SIGN 36 x 36 (900x900) WITH A FLASHER MOUNTED ON IT APPROXIMATELY 200' (60 m) IN ADVANCE OF THE MAIN ROUTE.
 - THE CLOSED PORTION OF THE MAIN ROUTE SHALL BE PROTECTED BY BLOCKING WITH TYPE I, TYPE II OR TYPE III BARRICADES, 1/3 OF THE CROSS SECTION OF THE CLOSED PORTION.
- SIDE ROAD WITH A SPEED LIMIT GREATER THAN 40 MPH (60 km/h) AS SHOWN ON THE DRAWING AND AS DIRECTED BY THE ENGINEER:
 - ONE "ROAD CONSTRUCTION AHEAD" SIGN 48 x 48 (1.2 m x 1.2 m) WITH A FLASHER MOUNTED ON IT APPROXIMATELY 500' (150 m) IN ADVANCE OF THE MAIN ROUTE.
 - THE CLOSED PORTION OF THE MAIN ROUTE SHALL BE PROTECTED BY BLOCKING WITH TYPE III BARRICADES, 1/2 OF THE CROSS SECTION OF THE CLOSED PORTION.
- CONES MAY BE SUBSTITUTED FOR BARRICADES OR DRUMS AT HALF THE SPACING DURING DAY OPERATIONS. CONES SHALL BE A MINIMUM OF 28 (710) IN HEIGHT.
- SIGNING AND THE WORK ZONE, A SINGLE HEADED ARROW (M6-1) SHALL BE USED IN LIEU OF THE DOUBLE HEADED ARROW (M6-4).
- WHEN WORK IS BEING PERFORMED ON A SIDE ROAD OR DRIVEWAY, FOLLOW THE APPLICABLE STANDARD(S). THE DIRECTIONAL ARROW (M6-1 OR M6-4) SHALL BE COVERED OR REMOVED WHEN NO LONGER CONSISTENT WITH THE TRAFFIC CONTROL SET-UP.
- ADVANCE WARNING SIGNS ARE TO BE OMITTED ON DRIVEWAYS UNLESS OTHERWISE SPECIFIED IN THE PLANS OR BY THE ENGINEER.
- THE TRAFFIC CONTROL AND PROTECTION FOR SIDE ROADS, INTERSECTIONS, AND DRIVEWAYS SHALL BE INCLUDED IN THE COST OF SPECIFIED TRAFFIC CONTROL STANDARDS OR ITEMS.

All dimensions are in inches (millimeters) unless otherwise shown.

USER NAME = footemj PLOT SCALE = 50.0000" / in. PLOT DATE = 3/4/2019	DESIGNED - L.H.A.	REVISED - A. HOUSEH 10-15-96	STATE OF ILLINOIS DEPARTMENT OF TRANSPORTATION	TRAFFIC CONTROL AND PROTECTION FOR SIDE ROADS, INTERSECTIONS, AND DRIVEWAYS			F.A.U. RTE. 1533	SECTION 21-00116-00-RS	COUNTY DuPAGE	TOTAL SHEETS 23	SHEET NO. 20	
	DRAWN -	REVISED - T. RAMMACHER 01-06-00		SCALE: NONE SHEET 1 OF 1 SHEETS STA. TO STA.			TC-10		CONTRACT NO. 61J37			
	CHECKED -	REVISED - A. SCHUETZE 07-01-13					ILLINOIS FED AID PROJECT					
	DATE - 06-89	REVISED - A. SCHUETZE 09-15-16										



NOTES:

1. USE BLACK LETTERING ON ORANGE BACKGROUND.
2. ERECT SIGNS IN ADVANCE OF THE LOCATION FOR THE "ROAD CONSTRUCTION AHEAD" SIGN AT LOCATIONS AS DIRECTED BY THE ENGINEER.
3. ERECT SIGN ① WITH INSTALLED PANEL ② ONE WEEK PRIOR TO THE START OF CONSTRUCTION.
4. REMOVE PANEL ② SOON AFTER THE START OF CONSTRUCTION.
5. SEE SPECIAL PROVISION FOR "TEMPORARY INFORMATION SIGNING" FOR ADDITIONAL INFORMATION.
6. ONE SIGN ASSEMBLY EQUALS 25.70 SQ. FT. (2.3 SQ. M.)
7. SHALL BE PAID FOR AS TEMPORARY INFORMATION SIGNING.

ALL DIMENSIONS ARE IN INCHES (MILLIMETERS) UNLESS OTHERWISE SHOWN.

MODEL: Default
 FILE NAME: P:\WORK\BIDDING\TEG_ILLINOIS\gov_PWDOT\Documents\UDOT_Offices\Bldg\1\Projects\Bldg\22-31\CAD\Bldg\CAD\Bldg\Bldg22.dgn

USER NAME = footemj	DESIGNED -	REVISED - R. MIRS 09-15-97
	DRAWN -	REVISED - R. MIRS 12-11-97
PLOT SCALE = 50.0000" / in.	CHECKED -	REVISED - T. RAMMACHER 02-02-99
PLOT DATE = 3/4/2019	DATE -	REVISED - C. JUCIUS 01-31-07

STATE OF ILLINOIS
DEPARTMENT OF TRANSPORTATION

ARTERIAL ROAD INFORMATION SIGN			
SCALE: NONE	SHEET 1	OF 1 SHEETS	STA. TO STA.

F.A.U. RTE. 1533	SECTION 21-00116-00-RS	COUNTY DuPAGE	TOTAL SHEETS 23	SHEET NO. 23
TC-22		CONTRACT NO. 61J37		
ILLINOIS FED. AID PROJECT				