

STATE OF ILLINOIS
DEPARTMENT OF TRANSPORTATION

F.A.P. RTE.	SECTION	COUNTY	TOTAL SHEETS	SHEET NO.
885	111SLP-1	JOHNSON	27	1
		ILLINOIS	CONTRACT NO. 78824	

FOR INDEX OF SHEETS, SEE SHEET NO. 3
FOR SUMMARY OF QUANTITIES, SEE SHEET NO. 4-6

**PROPOSED
HIGHWAY PLANS**

FAP ROUTE 885 (IL 146)
SECTION 111SLP-1
SLOPE STABILIZATION
JOHNSON COUNTY

TRAFFIC DATA

IL ROUTE 146
FUNCTIONAL CLASSIFICATION = MINOR ARTERIAL
DESIGN SPEED = POSTED SPEED = 55 MPH
2019 ADT = 950
2032 ADT = 1142
PV = 87.4%
SU = 8.4%
MU = 4.2%

TOWNSHIPS

GRANTSBURG TOWNSHIP

DESIGN DESIGNATION : N/A

COORDINATE SYSTEM : ILLINOIS COORDINATE SYSTEM-
EAST ZONE

POSTED SPEED : 55 MPH

EFK•Moen
Civil Engineering Design

J.U.L.I.E.
JOINT UTILITY LOCATION INFORMATION FOR EXCAVATION
1-800-892-0123
OR 811

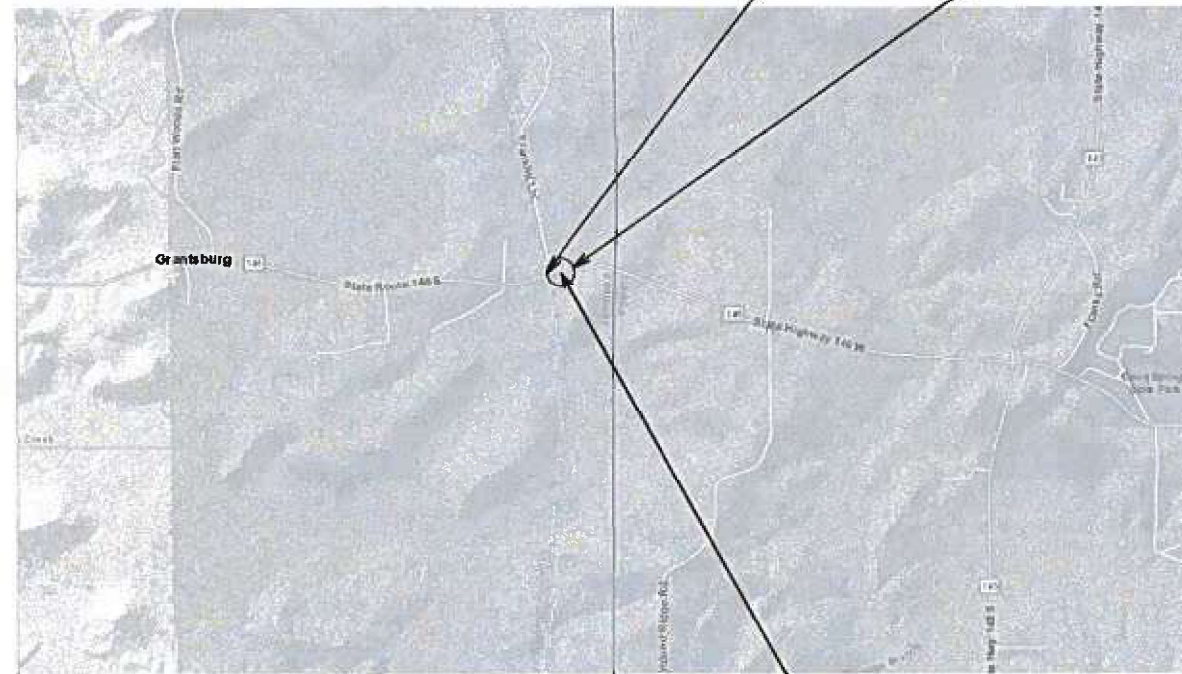
PROJECT ENGINEER: VALERIE ROLLA, P.E.

CONTRACT NO. 78824



SIGNATURE: *Shelley L. Dintelman*
DATE SIGNED: 2/9/2022
LICENSE EXPIRES: 11/30/2023

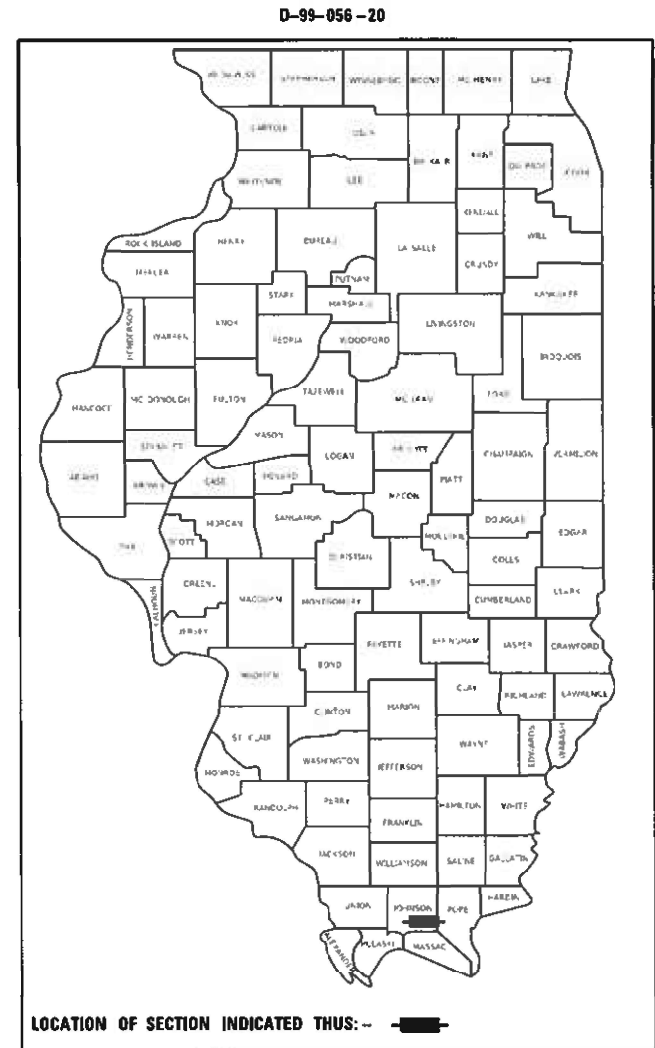
C-99-101-20



BEGIN STA. 577+98
END STA. 584+00
PROJECT LOCATION

LOCATION MAP
(NOT TO SCALE)

GROSS LENGTH = 602 FT. = 0.114 MILES
NET LENGTH = 602 FT. = 0.114 MILES



STATE OF ILLINOIS
DEPARTMENT OF TRANSPORTATION

SUBMITTED Feb 14 2022

Stephen M. Javina
REGION FIVE ENGINEER

March 24, 2023
Scott A. Etkin
ENGINEER OF DESIGN AND ENVIRONMENT

March 24, 2023
Stephen M. Javina
DIRECTOR OF HIGHWAYS PROJECT IMPLEMENTATION

PRINTED BY THE AUTHORITY
OF THE STATE OF ILLINOIS

INDEX OF SHEETS

1	COVER SHEET
2	SIGNATURE SHEET
3	INDEX OF SHEETS, GENERAL NOTES, HIGHWAY STANDARDS, AND COMMITMENTS
4-6	SUMMARY OF QUANTITIES
7	TYPICAL SECTIONS
8	SCHEDULE OF QUANTITIES
9-10	ALIGNMENT, TIES, & BENCHMARKS
11	PLAN
12-15	MAINTENANCE OF TRAFFIC
16	EROSION CONTROL PLAN
17	RIGHT OF WAY PLAN
18	LANDSCAPING PLAN
19	REMOVALS
20	SOIL BORINGS
21-23	DETAILS
24-27	CROSS SECTIONS

LIST OF ILLINOIS DOT HIGHWAY STANDARDS

000001-08	STANDARD SYMBOLS, ABBREVIATIONS AND PATTERNS
001006	DECIMAL OF AN INCH AND OF A FOOT
280001-07	TEMPORARY EROSION CONTROL SYSTEMS
601101-02	CONCRETE HEADWALL FOR PIPE UNDERDRAINS
630001-12	STEEL PLATE BEAM GUARDRAIL
630201-07	PCC/HMA STABILIZATION AT STEEL PLATE BEAM GUARDRAIL
630301-09	SHOULDER WIDENING FOR TYPE 1 (SPECIAL) GUARDRAIL TERMINALS
631031-18	TRAFFIC BARRIER TERMINAL, TYPE 6
667001-01	DRAINAGE MARKERS
701001-02	OFF-ROAD OPERATIONS 2L, 2W, MORE THAN 15' (4.5 m) AWAY
701006-05	OFF-ROAD OPERATIONS 2L, 2W, 15' (4.5 m) TO 24" (600 mm) FROM PAVEMENT EDGE
701011-04	OFF-ROAD MOVING OPERATIONS 2L, 2W, DAY ONLY
701201-05	LANE CLOSURE, 2L, 2W, DAY ONLY, FOR SPEEDS ≥ 45 MPH
701301-04	LANE CLOSURE, 2L, 2W, SHORT TIME OPERATIONS
701311-03	LANE CLOSURE, 2L, 2W, MOVING OPERATIONS - DAY ONLY
701316-13	LANE CLOSURE, 2L, 2W, BRIDGE REPAIR, FOR SPEEDS ≥ 45 MPH
701901-08	TRAFFIC CONTROL DEVICES
720001-01	SIGN PANEL MOUNTING DETAILS
720006-04	SIGN PANEL ERECTION DETAILS
725001-01	OBJECT AND TERMINAL MARKERS
780001-05	TYPICAL PAVEMENT MARKINGS
782006-01	GUARDRAIL AND BARRIER WALL REFLECTOR MOUNTING DETAILS
601001-05	PIPE UNDERDRAINS

GENERAL NOTES

- FACTORS USED FOR ESTIMATING PLAN QUANTITIES ARE AS FOLLOWS AND SHALL NOT BE USED FOR THE BASIS OF FINAL QUANTITIES:

ALL HOT MIX ASPHALT	2.016 TONS/CU. YD.
ALL AGGREGATE	2.05 TONS/CU. YD.
EARTH	110 LBS/CU. FT.

- REMOVAL OF ABANDONED UTILITIES SHALL BE INCLUDED IN THE COST OF EARTH EXCAVATION

HMA MIX REQUIREMENT TABLE

LOCATIONS:	IL ROUTE 146	IL ROUTE 146
MIXTURE USE(S):	HMA SHOULDERS (TOP LIFT)	HMA SHOULDERS (LOWER LIFT)
AB / PG:	PG64 - 22	PG64 - 22
ABR % (MAX):	SEE SPECIAL PROVISION	SEE SPECIAL PROVISION
DESIGN AIR VOIDS	4.0% @ N30	4.0% @ N30
MIXTURE COMPOSITION: (GRADATION MIXTURE)	IL - 9.5L	IL - 9.5L
FRICTION AGGREGATE:	N/A	N/A
MIXTURE WEIGHT:	112 LB/SQ YD/ IN	112 LB/SQ YD/ IN
QUALITY MANAGEMENT PROGRAM:	QC/OA	QC/OA
SUBLOT SIZE:	N/A	N/A

COMMITMENTS

TREES THREE (3) INCHES OR GREATER IN DIAMETER AT BREAST HEIGHT SHALL NOT BE CLEARED FROM APRIL 1 TO SEPTEMBER 30 OF ANY GIVEN YEAR.

REV. - MS

MODEL: Default
FILE NAME: 2300053.13 IL 146 Slope Failure DCH Design Prelim Road sheets 027824-shk-Cover.dgn



USER NAME = jdardeen	DESIGNED - AN	REVISED -
	DRAWN - AN	REVISED -
PLOT SCALE = 100.0000' / in.	CHECKED - JH	REVISED -
PLOT DATE = 9/2/2022	DATE - 8/30/2022	REVISED -

**STATE OF ILLINOIS
DEPARTMENT OF TRANSPORTATION**

**INDEX OF SHEETS, GENERAL NOTES, HIGHWAY STANDARDS,
AND COMMITMENTS**

SCALE: N/A SHEET 1 OF 1 SHEETS STA. TO STA.

F.A.P. RTE.	SECTION	COUNTY	TOTAL SHEETS	SHEET NO.
885	111SLP-1	JOHNSON	27	3
			CONTRACT NO. 78824	
ILLINOIS FED. AID PROJECT				

CONSTR. CODE

100% STATE

CODE NO.	ITEM	UNIT	TOTAL QUANTITY	CONSTR. CODE	
				100% STATE	
				ROADWAY	
				0005	
				RURAL	
20100500	TREE REMOVAL, ACRES	ACRE	0.50		0.50
20200100	EARTH EXCAVATION	CU YD	7095		7095
20400800	FURNISHED EXCAVATION	CU YD	13480		13480
20700110	POROUS GRANULAR EMBANKMENT	TON	2350		2350
25000210	SEEDING, CLASS 2A	ACRE	1.25		1.25
25000350	SEEDING, CLASS 7	ACRE	1.25		1.25
25000400	NITROGEN FERTILIZER NUTRIENT	POUND	113		113
25000500	PHOSPHORUS FERTILIZER NUTRIENT	POUND	113		113
25000600	POTASSIUM FERTILIZER NUTRIENT	POUND	113		113
25000700	AGRICULTURAL GROUND LIMESTONE	TON	2.5		2.5
25100115	MULCH, METHOD 2	ACRE	2.50		2.50
25100635	HEAVY DUTY EROSION CONTROL BLANKET	SQ YD	1583		1583
28000250	TEMPORARY EROSION CONTROL SEEDING	POUND	125		125
28000400	PERIMETER EROSION BARRIER	FOOT	709		709

MODEL: D:\efc\h
 FILE NAME: 20230063.13 IL_146_Slope_Failure\DCM\Design\Prelim\Revised\100%_State\100%_State.dwg



USER NAME = jdardeen	DESIGNED - AN	REVISED
	DRAWN - AN	REVISED -
PLOT SCALE = 100,0000' / in.	CHECKED - JH	REVISED -
PLOT DATE = 8/30/2022	DATE - 8/30/2022	REVISED -

**STATE OF ILLINOIS
DEPARTMENT OF TRANSPORTATION**

SUMMARY OF QUANTITIES

SCALE: N/A SHEET 1 OF 3 SHEETS STA. TO STA.

F.A.P. RTE.	SECTION	COUNTY	TOTAL SHEETS	SHEET NO.
885	111SLP-1	JOHNSON	27	4
			CONTRACT NO. 78824	
ILLINOIS FED. AID PROJECT				

CONSTR. CODE

100% STATE

CODE NO.	ITEM	UNIT	TOTAL QUANTITY	ROADWAY	
				0005	RURAL
44004250	PAVED SHOULDER REMOVAL	SQ YD	336	336	
48100500	AGGREGATE SHOULDERS, TYPE A 6"	SQ YD	162	162	
48203029	HOT-MIX ASPHALT SHOULDERS, 8"	SQ YD	60	60	
60100060	CONCRETE HEADWALLS FOR PIPE DRAINS	EACH	3	3	
60108100	PIPE UNDERDRAINS 4" (SPECIAL)	FOOT	102	102	
60109640	BACKSLOPE DRAINS, TYPE 3 4"	FOOT	800	800	
* 63000001	STEEL PLATE BEAM GUARDRAIL, TYPE A, 6 FOOT POSTS	FOOT	25	25	
* 63100085	TRAFFIC BARRIER TERMINAL, TYPE 6	EACH	1	1	
* 63100167	TRAFFIC BARRIER TERMINAL, TYPE 1 (SPECIAL) TANGENT	EACH	1	1	
63200310	GUARDRAIL REMOVAL	FOOT	556	556	
66700705	FURNISHING AND ERECTING DRAINAGE MARKERS	EACH	6	6	
67000400	ENGINEER'S FIELD OFFICE, TYPE A	CAL MO	2	2	
67100100	MOBILIZATION	L SUM	1	1	
70100100	TRAFFIC CONTROL AND PROTECTION, STANDARD 701316	EACH	1	1	

* SPECIALTY ITEM

MODEL: D:\efk\h
FILE NAME: 20230603_13_IL_146_Slope_Failure\DCM\Drawings\Prelim\Revised\13146-500.dwg



USER NAME = jdardeen	DESIGNED - AN	REVISED
	DRAWN - AN	REVISED -
PLOT SCALE = 100,0000' / in.	CHECKED - JH	REVISED -
PLOT DATE = 8/30/2022	DATE - 8/30/2022	REVISED -

STATE OF ILLINOIS
DEPARTMENT OF TRANSPORTATION

SUMMARY OF QUANTITIES

SCALE: N/A SHEET 2 OF 3 SHEETS STA. TO STA.

F.A.P. RTE.	SECTION	COUNTY	TOTAL SHEETS	SHEET NO.
885	111SLP-1	JOHNSON	27	5
			CONTRACT NO. 78824	
ILLINOIS FED. AID PROJECT				

CONSTR. CODE

100% STATE

CODE NO.	ITEM	UNIT	TOTAL QUANTITY	CONSTR. CODE	
				100% STATE	
				ROADWAY	
				0005	
				RURAL	
70100450	TRAFFIC CONTROL AND PROTECTION, STANDARD 701201	L SUM	1		1
70106500	TEMPORARY BRIDGE TRAFFIC SIGNALS	EACH	1		1
70106700	TEMPORARY RUMBLE STRIPS	EACH	6		6
70107025	CHANGEABLE MESSAGE SIGN	CAL DA	28		28
70300150	SHORT TERM PAVEMENT MARKING REMOVAL	SQ FT	358		358
* 72501000	TERMINAL MARKER - DIRECT APPLIED	EACH	1		1
* 78001110	PAINT PAVEMENT MARKING - LINE 4"	FOOT	1242		1242
* 78200005	GUARDRAIL REFLECTORS, TYPE A	EACH	4		4
78300201	PAVEMENT MARKING REMOVAL - GRINDING	SQ FT	215		215
Z0022800	FENCE REMOVAL	FOOT	141		141

* SPECIALTY ITEM

REV. - MS

MODEL: Default
FILE NAME: 2300053.13 IL 146 Slope Failure DCH Design Prelim Plotsheets\027824-shh-500.dgn



USER NAME = jdardeen	DESIGNED - AN	REVISED -
	DRAWN - AN	REVISED -
PLOT SCALE = 100.0000' / in.	CHECKED - JH	REVISED -
PLOT DATE = 8/30/2022	DATE - 8/30/2022	REVISED -

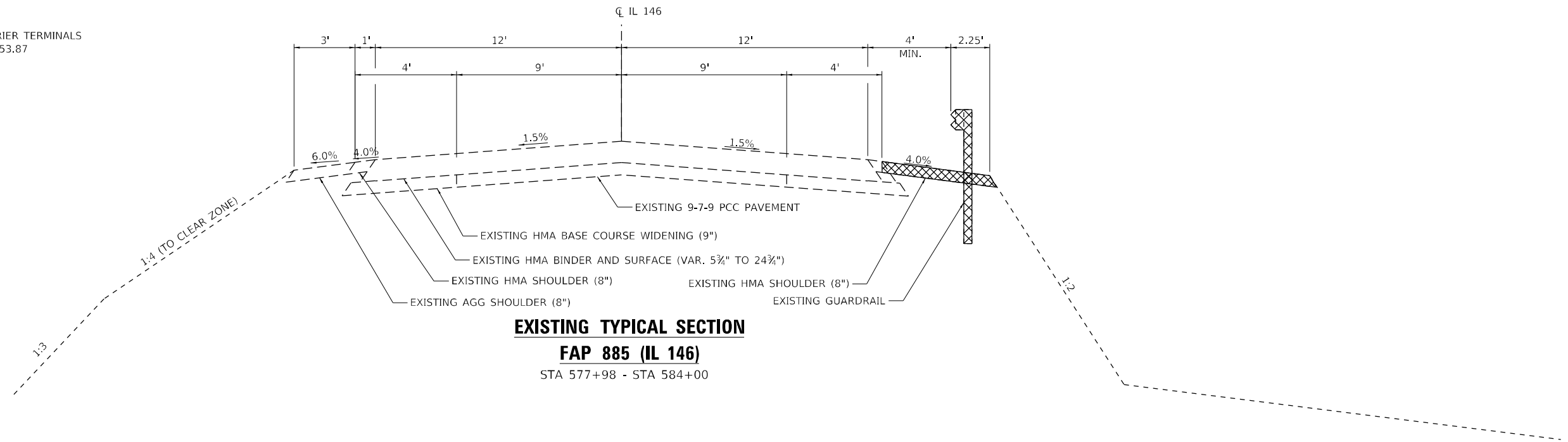
STATE OF ILLINOIS
DEPARTMENT OF TRANSPORTATION

SUMMARY OF QUANTITIES

SCALE: N/A SHEET 3 OF 3 SHEETS STA. TO STA.

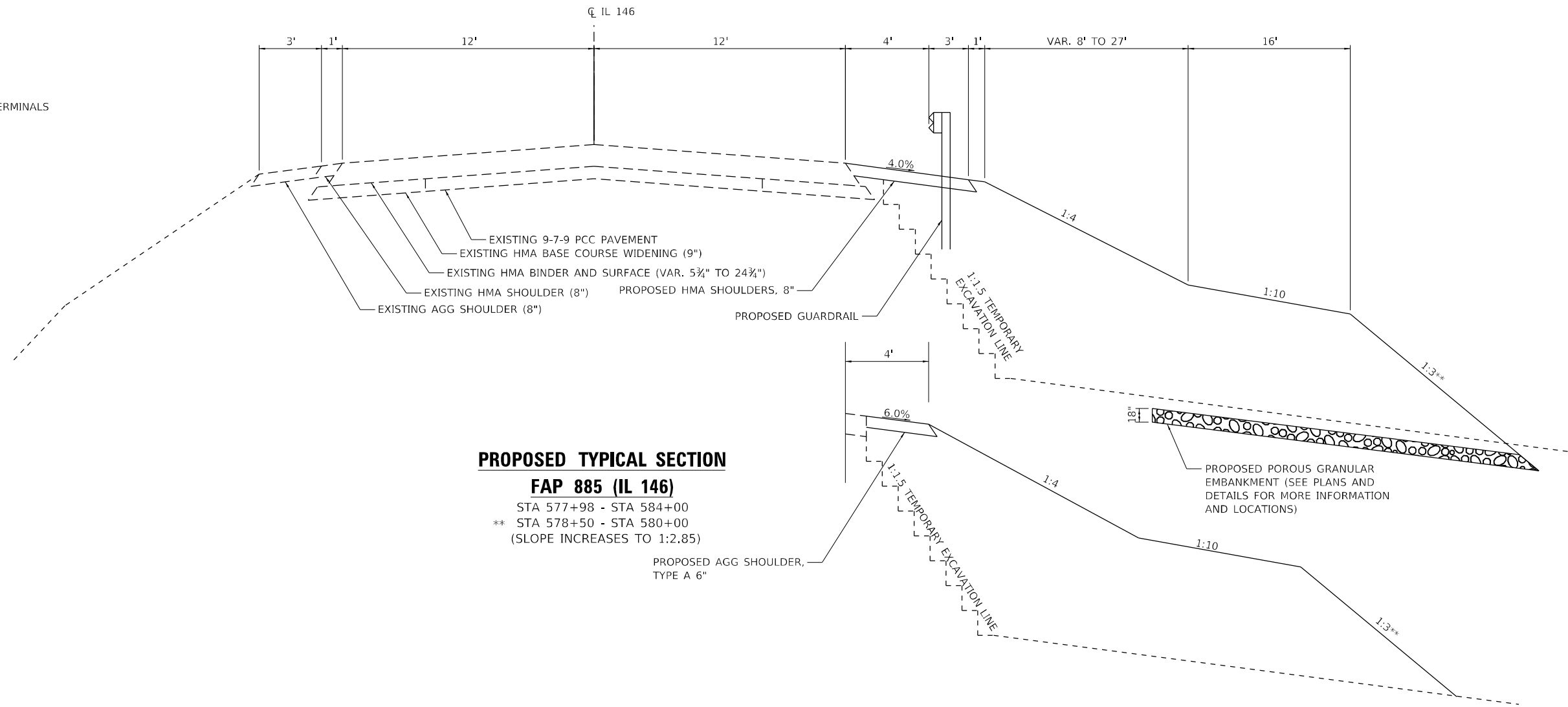
F.A.P. RTE.	SECTION	COUNTY	TOTAL SHEETS	SHEET NO.
885	111SLP-1	JOHNSON	27	6
			CONTRACT NO. 78824	
ILLINOIS FED. AID PROJECT				

*EX GUARDRAIL AND TRAFFIC BARRIER TERMINALS
STA 577+97.57 TO STA 583+53.87



EXISTING TYPICAL SECTION
FAP 885 (IL 146)
STA 577+98 - STA 584+00

*PR GUARDRAIL AND TRAFFIC BARRIER TERMINALS
STA 577+98 TO STA 578+98



PROPOSED TYPICAL SECTION
FAP 885 (IL 146)
STA 577+98 - STA 584+00
** STA 578+50 - STA 580+00
(SLOPE INCREASES TO 1:2.85)

MODEL: Default
FILE NAME: 23_00063_13_IL_146_Slope_Failure(DCH)Design(Prelim)Plat sheets(097882)4-shc-Typical.dgn

USER NAME = jdardeen	DESIGNED - AN	REVISED -
	DRAWN - AN	REVISED -
PLOT SCALE = 100,0000' / in.	CHECKED - JH	REVISED -
PLOT DATE = 8/30/2022	DATE - 8/30/2022	REVISED -

F.A.P. RTE.	SECTION	COUNTY	TOTAL SHEETS	SHEET NO.
885	111SLP-1	JOHNSON	27	7
CONTRACT NO. 78824				
ILLINOIS FED. AID PROJECT				

EARTHWORK SCHEDULE										
LOCATION			EARTH EXCAVATION CU YD	AVERAGE SHRINKAGE FACTOR %	EARTH EXCAVATION (ADJUSTED) CU YD	EMBANKMENT CU YD	EARTHWORK BALANCE		FURNISHED EXCAVATION CU YD	REMARKS
							EXCAVATION REQUIRED TO COMPLETE*	EXCESS EXCAVATION		
STA.	TO	STA.					CU YD	CU YD		
578+00		578+50	735	18%	603	997	660		780	217 CU YD OF EARTH EXCAVATION SUITABLE FOR REUSE
578+50		579+00	857	18%	703	1697	1303		1353	345 CU YD OF EARTH EXCAVATION SUITABLE FOR REUSE
579+00		579+50	849	18%	696	1900	1595		1593	307 CU YD OF EARTH EXCAVATION SUITABLE FOR REUSE
579+50		580+00	1033	18%	847	1966	1698		1605	361 CU YD OF EARTH EXCAVATION SUITABLE FOR REUSE
580+00		580+50	910	18%	747	1843	1641		1581	262 CU YD OF EARTH EXCAVATION SUITABLE FOR REUSE
580+50		581+00	589	18%	483	1588	1517		1549	39 CU YD OF EARTH EXCAVATION SUITABLE FOR REUSE
581+00		581+50	554	18%	454	1403	1403		1403	NO EARTH EXCAVATION SUITABLE FOR REUSE
581+50		582+00	508	18%	416	1208	1208		1208	NO EARTH EXCAVATION SUITABLE FOR REUSE
582+00		582+50	389	18%	319	932	932		932	NO EARTH EXCAVATION SUITABLE FOR REUSE
582+50		583+00	303	18%	248	707	707		707	NO EARTH EXCAVATION SUITABLE FOR REUSE
583+00		583+50	251	18%	206	539	539		539	NO EARTH EXCAVATION SUITABLE FOR REUSE
583+50		584+00	113	18%	93	226	226		226	NO EARTH EXCAVATION SUITABLE FOR REUSE
SUBTOTAL			7091						13477	
TOTAL			7095						13480	

*ONLY MATERIAL UNDERCUT FOR REPLACEMENT WITH POROUS GRANULAR MATERIAL IS SUITABLE FOR REUSE. OTHER EXISTING EMBANKMENT MATERIAL SHALL BE DISPOSED OF OFF SITE.

SHOULDER SCHEDULE					
STA	TO	STA	PAVED SHOULDER REMOVAL SQ YD	HOT-MIX ASPHALT SHOULDERS, 8" SQ YD	AGGREGATE SHOULDERS, TYPE A 6" SQ YD
578+28		584+16	336		
578+28		579+11		60	
579+11		584+00			162
TOTAL			336	60	162

SLOPE REPAIR SCHEDULE						
LOCATION			POROUS GRANULAR EMBANKMENT TON	BACKSLOPE DRAINS, TYPE 3, 4 INCHES FOOT	PIPE UNDERDRAIN (SPECIAL), 4 INCHES FOOT	CONCRETE HEADWALLS FOR PIPE DRAINS EACH
STA.	TO	STA.				
578+00		578+50	423			
578+50		579+00	625			
579+00		579+50	644			
579+50		580+00	658			
580+00		580+50	0			
580+50		581+00	0		44	1
581+00		581+50	0			
581+50		582+00	0			
582+00		582+50	0			
582+50		583+00	0			
583+00		583+50	0		58	2
583+50		584+00	0			
578+50		583+50		500		

DRAINAGE MARKER SCHEDULE			
STA	O/S	EACH	
577+77.13	135.00' RT	1	
581+00.00	120.00' RT	1	
581+00.00	135.00' RT	1	
583+00.00	80.00' RT	1	
583+93.78	35.00' RT	1	
583+93.78	80.00' RT	1	
TOTAL			6

MAINTENANCE OF TRAFFIC SCHEDULE						
STA	TO	STA	PAVEMENT MARKING REMOVAL - GRINDING SQ FT	TRAFFIC CONTROL & PROTECTION, STANDARD 701316 EACH	TEMPORARY BRIDGE TRAFFIC SIGNALS EACH	TEMPORARY RUMBLE STRIPS EACH
EB APPROACH						3
WB APPROACH					1	3
575+13		576+67	103	1		
575+13		585+86				
584+19		585+86	112			
SUBTOTAL			215	1	1	6
TOTAL			215	1	1	6

PAVEMENT MARKING SCHEDULE					
STA	TO	STA	COLOR	PAINT PAVEMENT MARKING - LINE 4 FOOT	
575+13		576+67	YELLOW	DOUBLE CENTERLINE	308
584+19		585+86	YELLOW	DOUBLE CENTERLINE	334
578+00		584+00	WHITE	EB EDGELINE	600
TOTAL					1242

GUARDRAIL SCHEDULE								
STA	TO	STA	GUARDRAIL REMOVAL FOOT	TRAFFIC BARRIER TERMINAL, TYPE 6 EACH	STEEL PLATE BEAM GUARDRAIL, TYPE A, 6 FOOT POSTS FOOT	TRAFFIC BARRIER TERMINAL, TYPE 1 (SPECIAL) TANGENT EACH	TERMINAL MARKER - DIRECT APPLIED EACH	GUARDRAIL REFLECTORS, TYPE A EACH
577+98		583+54	556					
577+98		578+35		1				
578+35		578+60			25			4
578+60		578+98				1	1	
TOTAL			556	1	25	1	1	4

MODEL: Default
FILE NAME: 23-30063.13 IL -46 Slope Failure/DCH/Design/Drawings/Sheet/D97824-4ch-Schedule.dgn



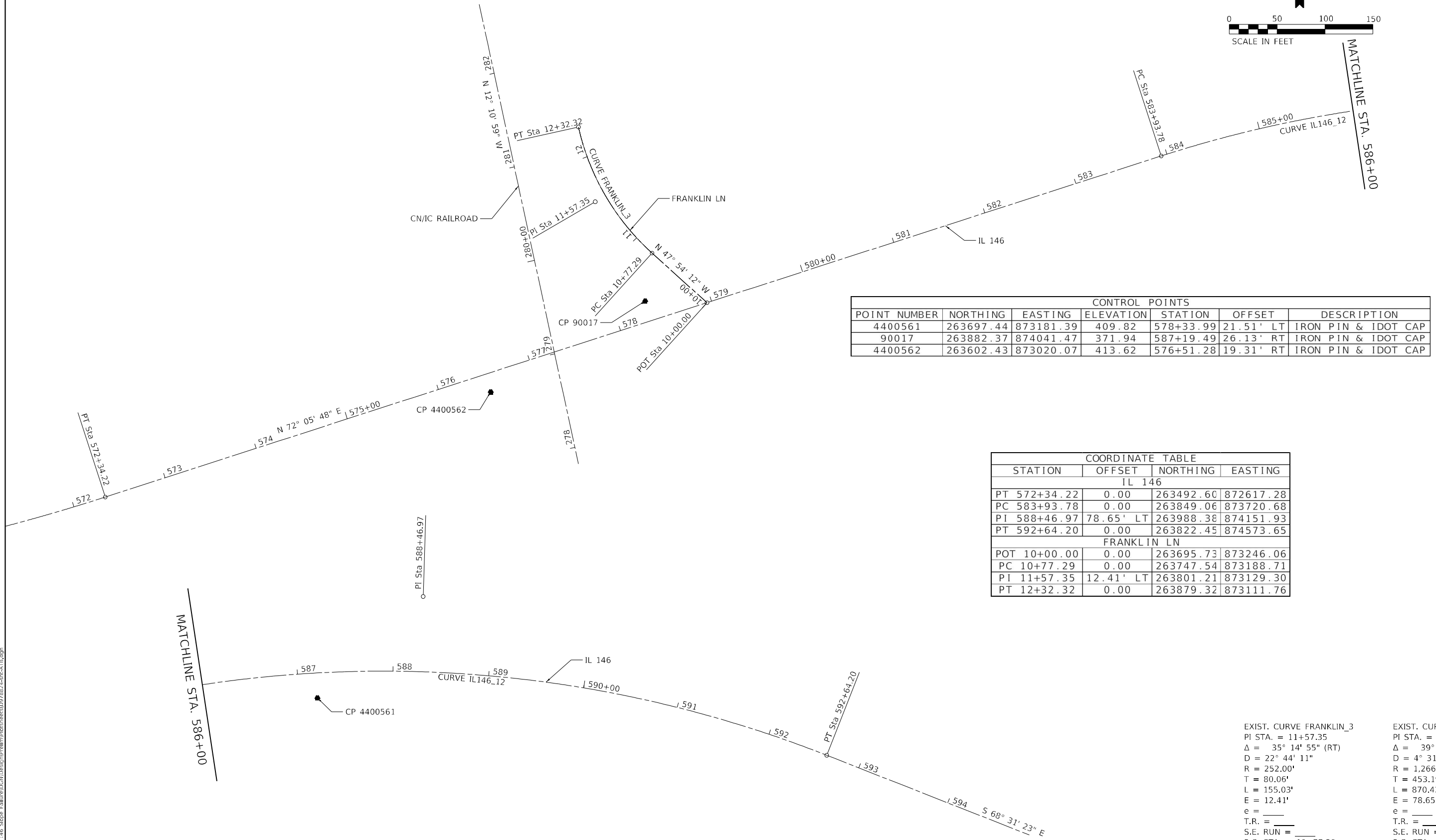
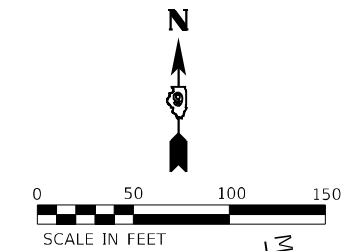
USER NAME = jdardeen	DESIGNED - AN	REVISED -
	DRAWN - AN	REVISED -
PLOT SCALE = 100,000' / in.	CHECKED - JH	REVISED -
PLOT DATE = 8/30/2022	DATE - 8/30/2022	REVISED -

STATE OF ILLINOIS
DEPARTMENT OF TRANSPORTATION

SCHEDULE OF QUANTITIES			
SCALE: N/A	SHEET 1	OF 1 SHEETS	STA. TO STA.

F.A.P. RTE.	SECTION	COUNTY	TOTAL SHEETS	SHEET NO.
885	111SLP-1	JOHNSON	27	8
CONTRACT NO. 78824				
ILLINOIS FED. AID PROJECT				

BENCHMARKS		
NAME	ELEVATION	DESCRIPTION
BM 43	412.07	CUT SQUARE ON NE WINGWALL OF SN 044-0056, 23' LEFT OF STA 577+95
BM 044-7065	370.03	CUT SQUARE ON WEST END OF HEADWALL ON SOUTH SIDE OF STATE ROUTE 146 FCR SN 044-7065



CONTROL POINTS						
POINT NUMBER	NORTHING	EASTING	ELEVATION	STATION	OFFSET	DESCRIPTION
4400561	263697.44	873181.39	409.82	578+33.99	21.51' LT	IRON PIN & IDOT CAP
90017	263882.37	874041.47	371.94	587+19.49	26.13' RT	IRON PIN & IDOT CAP
4400562	263602.43	873020.07	413.62	576+51.28	19.31' RT	IRON PIN & IDOT CAP

COORDINATE TABLE			
STATION	OFFSET	NORTHING	EASTING
IL 146			
PT 572+34.22	0.00	263492.60	872617.28
PC 583+93.78	0.00	263849.06	873720.68
PI 588+46.97	78.65' LT	263988.38	874151.93
PT 592+64.20	0.00	263822.45	874573.65
FRANKLIN LN			
POT 10+00.00	0.00	263695.73	873246.06
PC 10+77.29	0.00	263747.54	873188.71
PI 11+57.35	12.41' LT	263801.21	873129.30
PT 12+32.32	0.00	263879.32	873111.76

EXIST. CURVE FRANKLIN_3 PI STA. = 11+57.35 Δ = 35° 14' 55" (RT) D = 22° 44' 11" R = 252.00' T = 80.06' L = 155.03' E = 12.41' e = _____ T.R. = _____ S.E. RUN = _____ P.C. STA. = 10+77.29 P.T. STA. = 12+32.32	EXIST. CURVE IL146_12 PI STA. = 588+46.97 Δ = 39° 22' 49" (RT) D = 4° 31' 27" R = 1,266.40' T = 453.19' L = 870.42' E = 78.65' e = _____ T.R. = _____ S.E. RUN = _____ P.C. STA. = 583+93.78 P.T. STA. = 592+64.20
---	--

MODEL: D:\efk\11_146_Slope_Full\Drawings\Design\Drawings\Benchmarks\1115SLP-1.dwg
FILE NAME: 23_0063_13_11_146_Slope_Full.dwg

EFK Moen
Civil Engineering Design

USER NAME = jdardeen	DESIGNED - AN	REVISED -
	DRAWN - AN	REVISED -
PLOT SCALE = 100,0000' / in.	CHECKED - JH	REVISED -
PLOT DATE = 8/30/2022	DATE - 8/30/2022	REVISED -

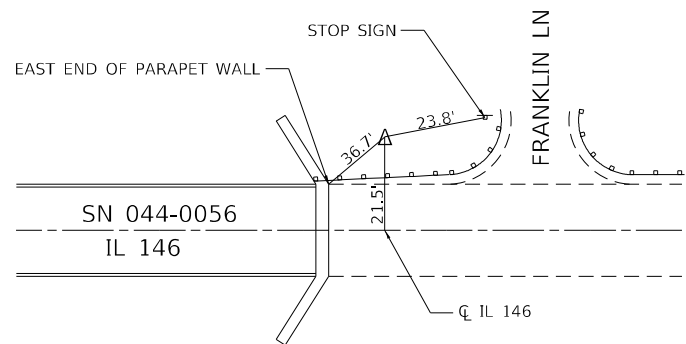
**STATE OF ILLINOIS
DEPARTMENT OF TRANSPORTATION**

ALIGNMENT, TIES, & BENCHMARKS

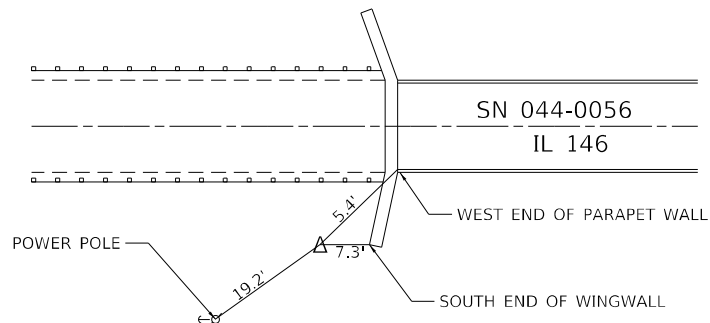
SCALE: 1" = 50' SHEET 1 OF 2 SHEETS STA. TO STA.

F.A.P. RTE.	SECTION	COUNTY	TOTAL SHEETS	SHEET NO.
885	1115LP-1	JOHNSON	27	9
CONTRACT NO. 78824				
ILLINOIS FED. AID PROJECT				

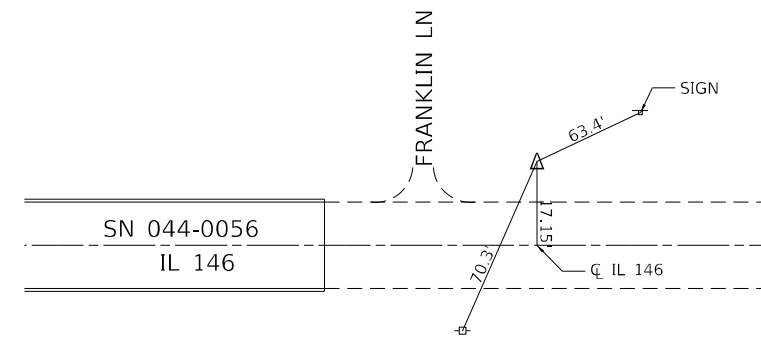
Δ4400561
ELEV 409.824



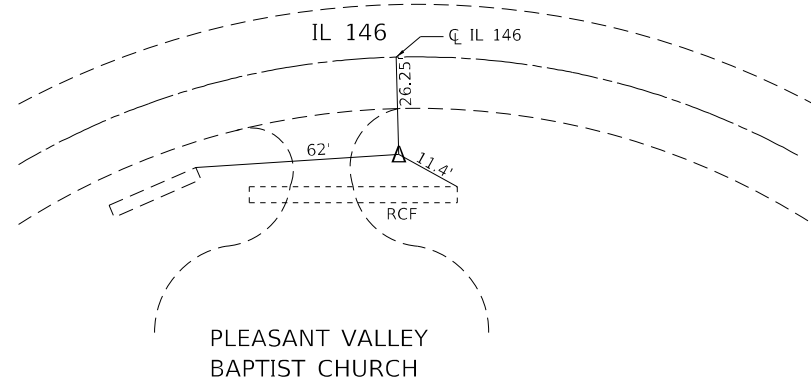
Δ4400562
ELEV 413.620



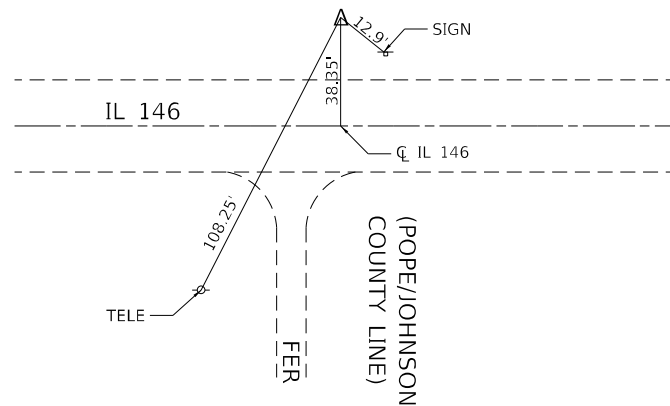
IP&C 0099



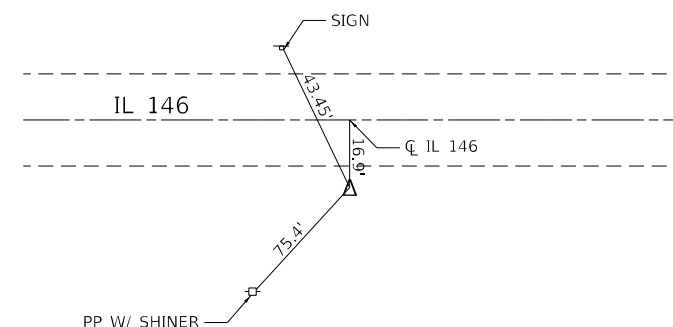
IP&C 0017



IP&C 0096



IP&C 0020



MODEL: D:\efk\11_146_Slope_Failure\DCM\Design\Prelim\Plat sheets\1D97824-4-2c-A1E.dgn
FILE NAME: 23_0063_13_11_146_Slope_Failure\DCM\Design\Prelim\Plat sheets\1D97824-4-2c-A1E.dgn

EFK Moen
Civil Engineering Design

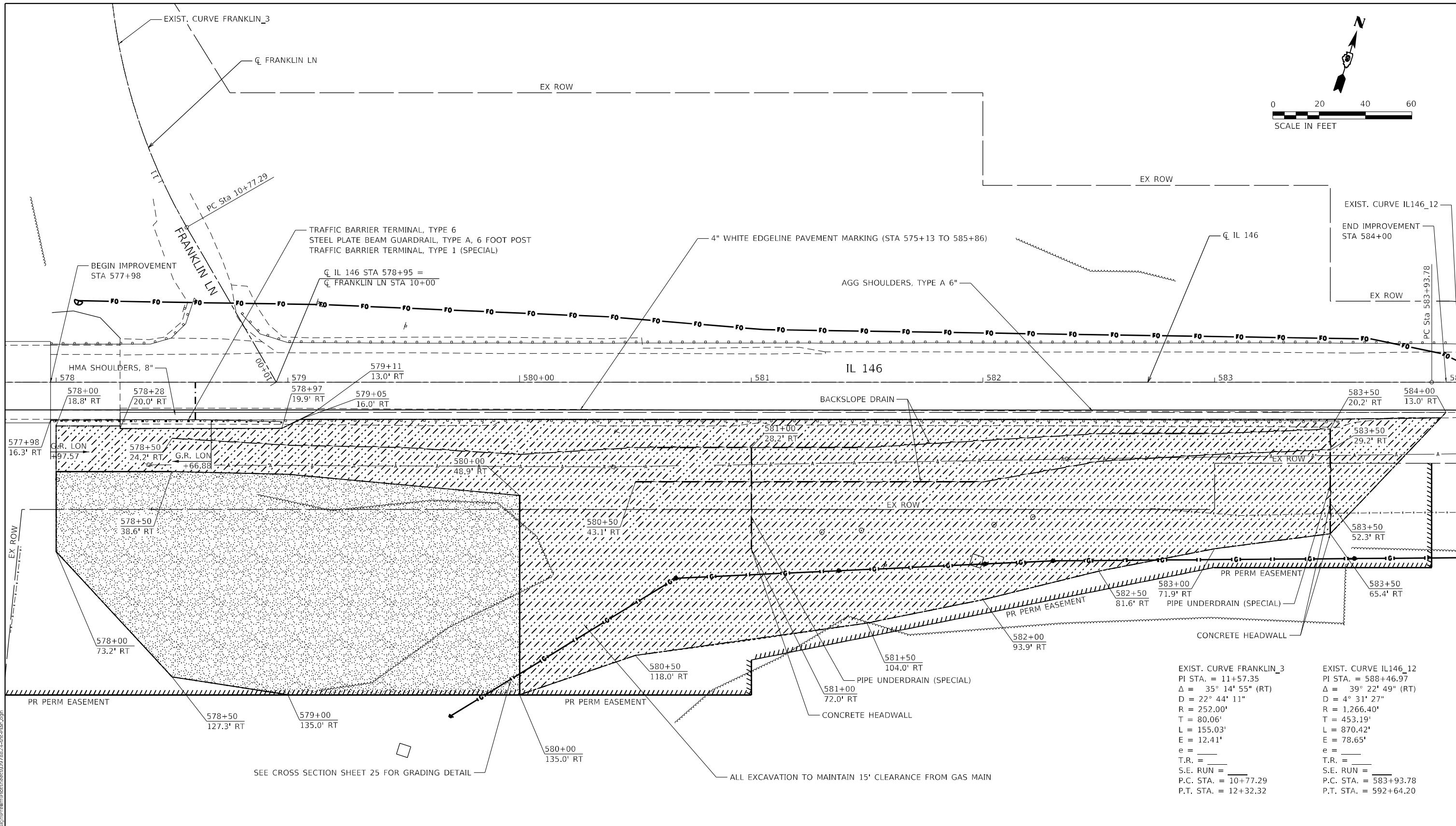
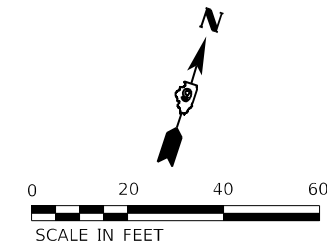
USER NAME = jdardeen	DESIGNED - AN	REVISED -
DRAWN - AN	REVISOR -	
PLOT SCALE = 100,0000' / in.	CHECKED - JH	REVISOR -
PLOT DATE = 8/30/2022	DATE - 8/30/2022	REVISOR -

**STATE OF ILLINOIS
DEPARTMENT OF TRANSPORTATION**

ALIGNMENT, TIES, & BENCHMARKS

SCALE: N/A SHEET 2 OF 2 SHEETS STA. TO STA.

F.A.P. RTE.	SECTION	COUNTY	TOTAL SHEETS	SHEET NO.
885	111SLP-1	JOHNSON	27	10
CONTRACT NO. 78824				
ILLINOIS FED. AID PROJECT				



EXIST. CURVE FRANKLIN_3 PI STA. = 11+57.35 Δ = 35° 14' 55" (RT) D = 22° 44' 11" R = 252.00' T = 80.06' L = 155.03' E = 12.41' e = _____ T.R. = _____ S.E. RUN = _____ P.C. STA. = 10+77.29 P.T. STA. = 12+32.32	EXIST. CURVE IL146_12 PI STA. = 588+46.97 Δ = 39° 22' 49" (RT) D = 4° 31' 27" R = 1,266.40' T = 453.19' L = 870.42' E = 78.65' e = _____ T.R. = _____ S.E. RUN = _____ P.C. STA. = 583+93.78 P.T. STA. = 592+64.20
---	--

SEE CROSS SECTION SHEET 25 FOR GRADING DETAIL

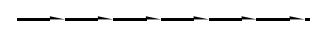
ALL EXCAVATION TO MAINTAIN 15' CLEARANCE FROM GAS MAIN



SLOPE STABILIZATION - SEE DETAILS AND CROSS SECTIONS.



SLOPE STABILIZATION WITH POROUS GRANULAR EMBANKMENT- SEE DETAILS AND CROSS SECTIONS.



BACKSLOPE DRAIN OR PIPE UNDERDRAIN (SPECIAL)

MODEL: Default
FILE NAME: 23_0003_13_IL_146_Slope_Enhancement\Drawings\1115LP-1.dwg

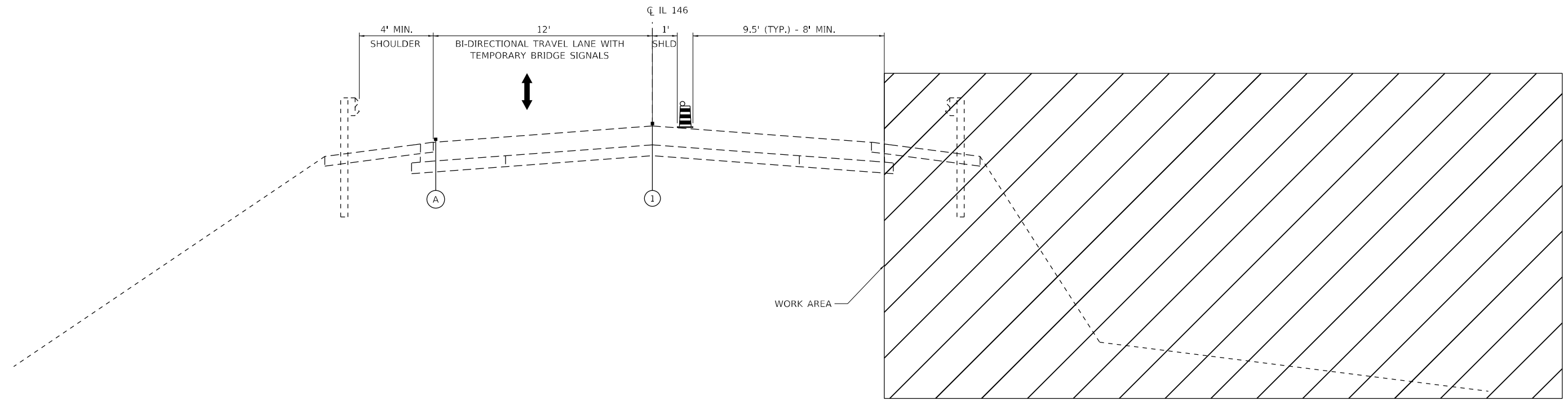


USER NAME = jdardeen	DESIGNED - AN	REVISED -
DRAWN - AN	REVISED -	
PLOT SCALE = 40,0000' / in.	CHECKED - JH	REVISED -
PLOT DATE = 8/30/2022	DATE - 8/30/2022	REVISED -

**STATE OF ILLINOIS
DEPARTMENT OF TRANSPORTATION**

PLAN			
SCALE: 1"=20'	SHEET 1	OF 1	SHEETS
STA. 577+98	TO STA. 584+00		

F.A.P. RTE. 885	SECTION 1115LP-1	COUNTY JOHNSON	TOTAL SHEETS 27	SHEET NO. 11
ILLINOIS FED. AID PROJECT			CONTRACT NO. 78824	



MAINTENANCE OF TRAFFIC TYPICAL SECTION – IL 146

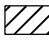
STA 574+21 TO STA 586+60

① PAVEMENT MARKING TAPE, TYPE IV 4" (WHITE) (COVER EXISTING 4" YELLOW LINE)

Ⓐ EXISTING PAVEMENT MARKING

 DRUM WITH STEADY BURN BI-DIRECTIONAL LIGHT

 DIRECTION OF TRAFFIC

 WORK AREA

MODEL: D:\efk\11_146_Slope_Failure\DCM\Design\Prelim\Revised\Sheet1D97821-4-Sub-401-Typical.dgn
FILE NAME: 23_00063_13_11_146_Slope_Failure\DCM\Design\Prelim\Revised\Sheet1D97821-4-Sub-401-Typical.dgn

EFK Moen
Civil Engineering Design

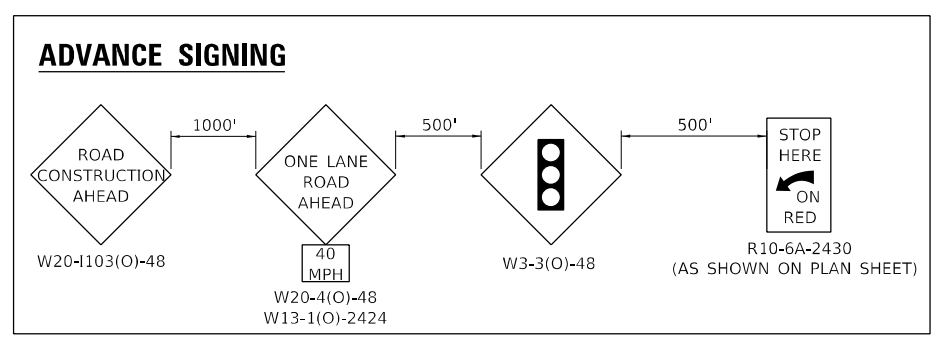
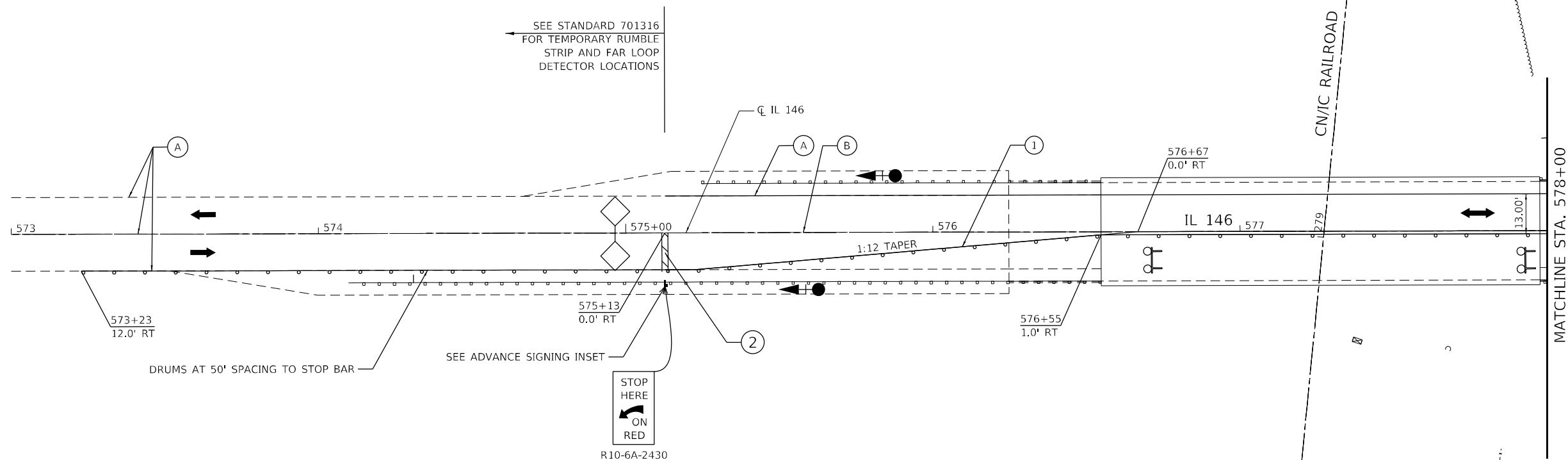
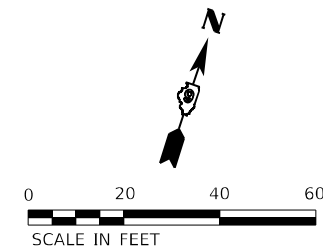
USER NAME = jdardeen	DESIGNED - AN	REVISED -
	DRAWN - AN	REVISED -
PLOT SCALE = 100,0000' / in.	CHECKED - JH	REVISED -
PLOT DATE = 8/30/2022	DATE - 8/30/2022	REVISED -

**STATE OF ILLINOIS
DEPARTMENT OF TRANSPORTATION**

**MAINTENANCE OF TRAFFIC
TYPICALS**

SCALE: N/A SHEET 1 OF 1 SHEETS STA. TO STA.

F.A.P. RTE.	SECTION	COUNTY	TOTAL SHEETS	SHEET NO.
885	111SLP-1	JOHNSON	27	12
CONTRACT NO. 78824				
ILLINOIS FED. AID PROJECT				



- WORK AREA
- TEMPORARY TRAFFIC SIGNAL
- DIRECTION OF TRAFFIC
- DRUMS WITH STEADY BURN BI-DIRECTIONAL LIGHT SPACED AT 25' C-C UNLESS OTHERWISE NOTED

- (A) EXISTING PAVEMENT MARKING
- (B) PAVEMENT MARKING REMOVAL - GRINDING
- (1) PAVEMENT MARKING TAPE, TYPE IV 4" (WHITE) (TO BE PLACED OVER EXISTING 4" YELLOW LINE)
- (2) TEMPORARY PAVEMENT MARKING - LINE 24" (WHITE)

MODEL: Default
 FILE NAME: 2303063.13 IL -46 Slope Failure(DCH)Design(Prelim)Rbtsheetsa1D978214ch40T.dgn

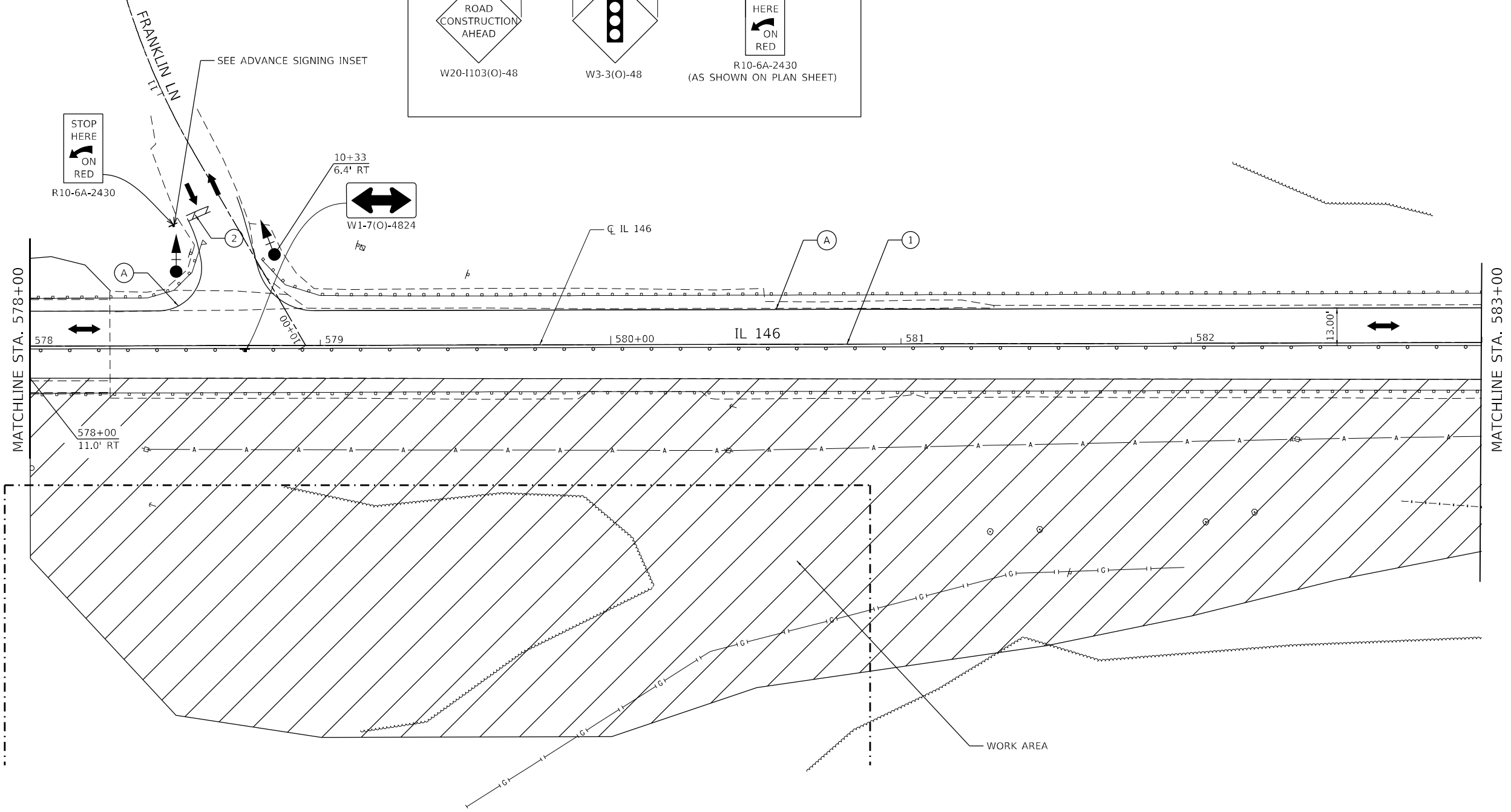
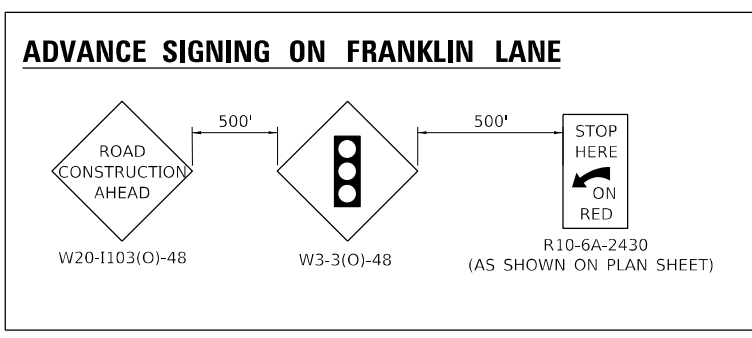


USER NAME = jdardeen	DESIGNED - AN	REVISED -
	DRAWN - AN	REVISED -
PLOT SCALE = 40,0000 * / in.	CHECKED - JH	REVISED -
PLOT DATE = 8/30/2022	DATE - 8/30/2022	REVISED -

**STATE OF ILLINOIS
DEPARTMENT OF TRANSPORTATION**

MAINTENANCE OF TRAFFIC PLAN			
SCALE: 1" = 20'	SHEET 1	OF 3 SHEETS	STA. 573+00 TO STA. 578+00

F.A.P. RTE. 885	SECTION 111SLP-1	COUNTY JOHNSON	TOTAL SHEETS 27	SHEET NO. 13
CONTRACT NO. 78824				
ILLINOIS FED. AID PROJECT				



- WORK AREA
- TEMPORARY TRAFFIC SIGNAL
- DIRECTION OF TRAFFIC
- DRUMS WITH STEADY BURN BI-DIRECTIONAL LIGHT SPACED AT 25' C-C UNLESS OTHERWISE NOTED
- (A) EXISTING PAVEMENT MARKING
- (B) PAVEMENT MARKING REMOVAL - GRINDING
- (1) PAVEMENT MARKING TAPE, TYPE IV 4" (WHITE) (TO BE PLACED OVER EXISTING 4" YELLOW LINE)
- (2) TEMPORARY PAVEMENT MARKING - LINE 24" (WHITE)

MODEL: Default
 FILE NAME: 23_0063_13_IL_146_Slopes_Failure(DCH)Design(Prelim)PlatSheet3(D97824)4ch-MOT.dgn

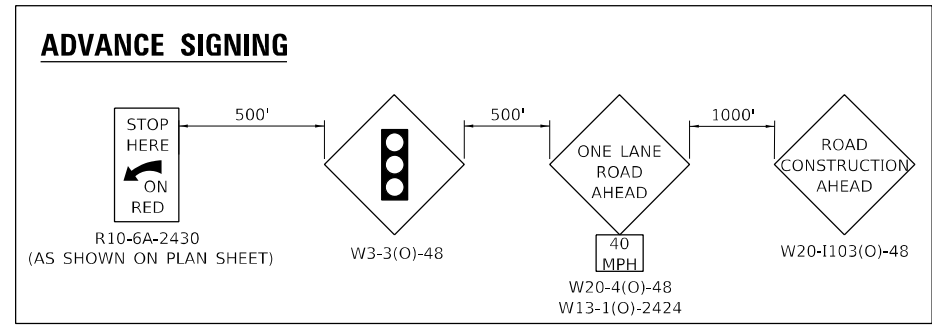
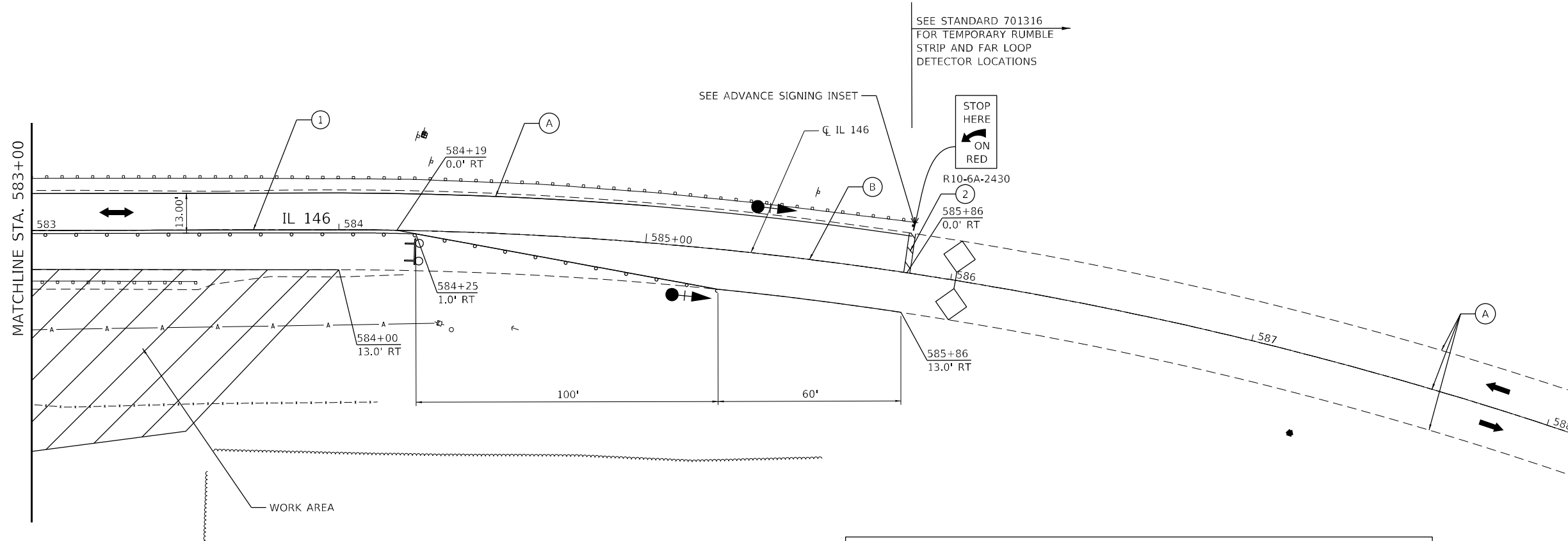
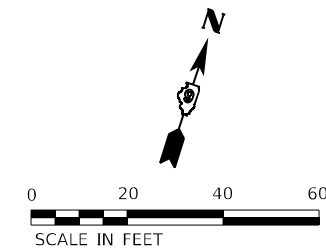


USER NAME = jdardeen	DESIGNED - AN	REVISED -
	DRAWN - AN	REVISED -
PLOT SCALE = 40,0000 * / in.	CHECKED - JH	REVISED -
PLOT DATE = 8/30/2022	DATE - 8/30/2022	REVISED -

STATE OF ILLINOIS
DEPARTMENT OF TRANSPORTATION

MAINTENANCE OF TRAFFIC PLAN			
SCALE: 1" = 20'	SHEET 2	OF 3 SHEETS	STA. 578+00 TO STA. 583+00

F.A.P. RTE.	SECTION	COUNTY	TOTAL SHEETS	SHEET NO.
885	111SLP-1	JOHNSON	27	14
CONTRACT NO. 78824				
ILLINOIS FED. AID PROJECT				



- WORK AREA
- TEMPORARY TRAFFIC SIGNAL
- DIRECTION OF TRAFFIC
- DRUMS WITH STEADY BURN BI-DIRECTIONAL LIGHT SPACED AT 25' C-C UNLESS OTHERWISE NOTED

- (A) EXISTING PAVEMENT MARKING
- (B) PAVEMENT MARKING REMOVAL - GRINDING
- (1) PAVEMENT MARKING TAPE, TYPE IV 4" (WHITE) (TO BE PLACED OVER EXISTING 4" YELLOW LINE)
- (2) TEMPORARY PAVEMENT MARKING - LINE 24" (WHITE)

MODEL: D:\efk\11_146_Slope_Failure\DCM\Design\Drawings\1115SLP-1.dwg
 FILE NAME: 23_30063_13_11_146_Slope_Failure\DCM\Design\Drawings\1115SLP-1.dwg



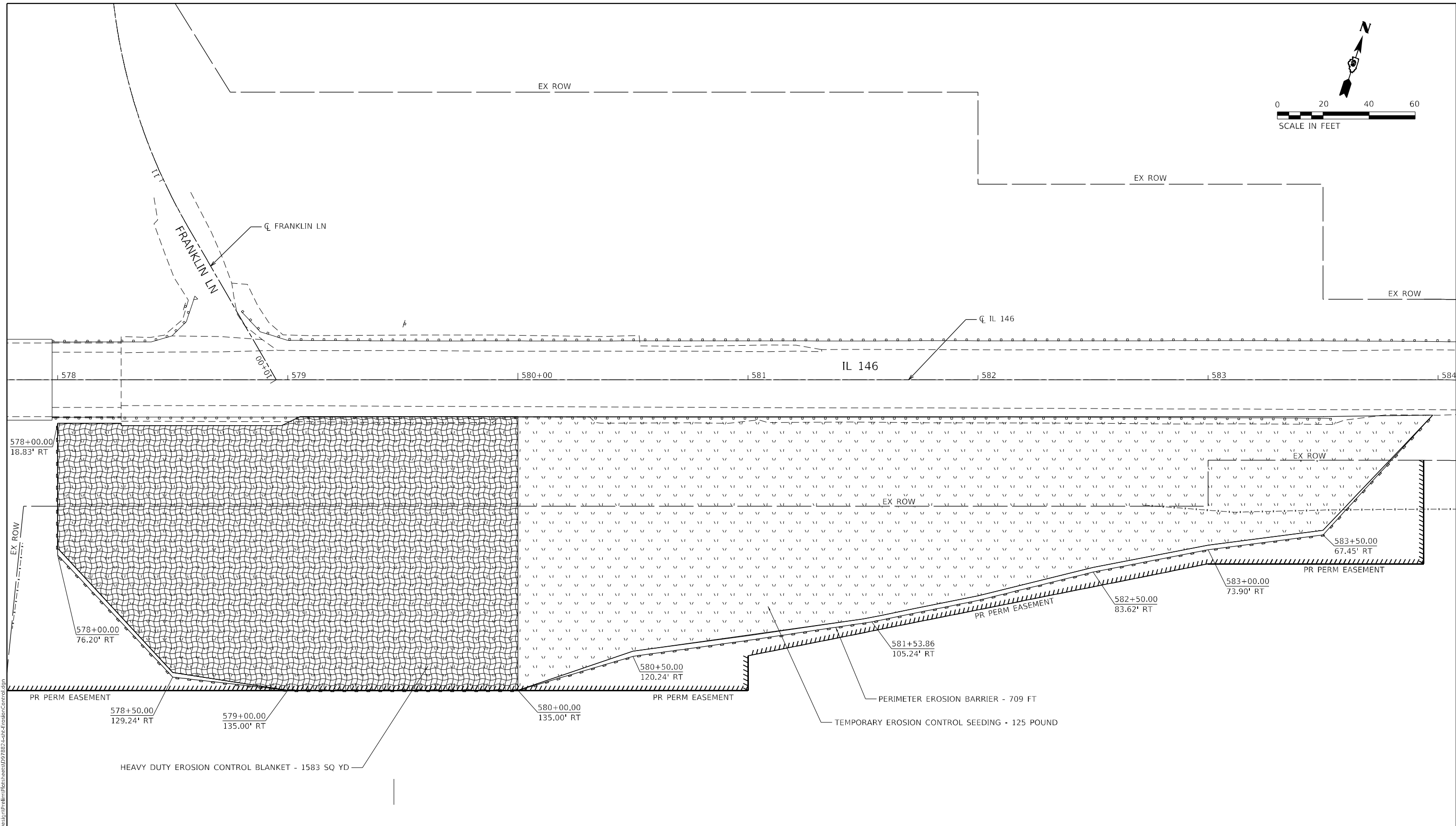
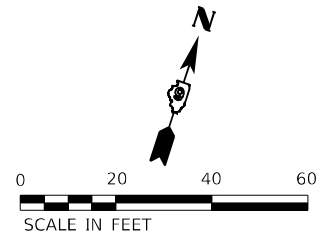
USER NAME = jdardeen	DESIGNED - AN	REVISED -
DRAWN - AN	REVISOR -	
PLOT SCALE = 40,0000 * / in.	CHECKED - JH	REVISED -
PLOT DATE = 8/30/2022	DATE - 8/30/2022	REVISED -

**STATE OF ILLINOIS
DEPARTMENT OF TRANSPORTATION**

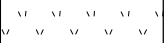
**MAINTENANCE OF TRAFFIC
PLAN**

SCALE: 1" = 20' SHEET 3 OF 3 SHEETS STA. 583+00 TO STA. 588+00

F.A.P. RTE.	SECTION	COUNTY	TOTAL SHEETS	SHEET NO.
885	1115LP-1	JOHNSON	27	15
CONTRACT NO. 78824				
ILLINOIS FED. AID PROJECT				



EROSION CONTROL LEGEND

- 
TEMPORARY EROSION CONTROL SEEDING
- 
HEAVY DUTY EROSION CONTROL BLANKET
- 
PERIMETER EROSION BARRIER

MODEL: Default
 FILE NAME: Z:\30063.13 IL 146 Slope Failure\DCM\Design\Plan\1111SLP-1.dwg

EFK Moen
 Civil Engineering Design

USER NAME = jdardeen	DESIGNED - AN	REVISED -
DRAWN - AN	REVISIONS -	
PLOT SCALE = 40,0000 * / in.	CHECKED - JH	REVISED -
PLOT DATE = 8/30/2022	DATE - 8/30/2022	REVISED -

STATE OF ILLINOIS
DEPARTMENT OF TRANSPORTATION

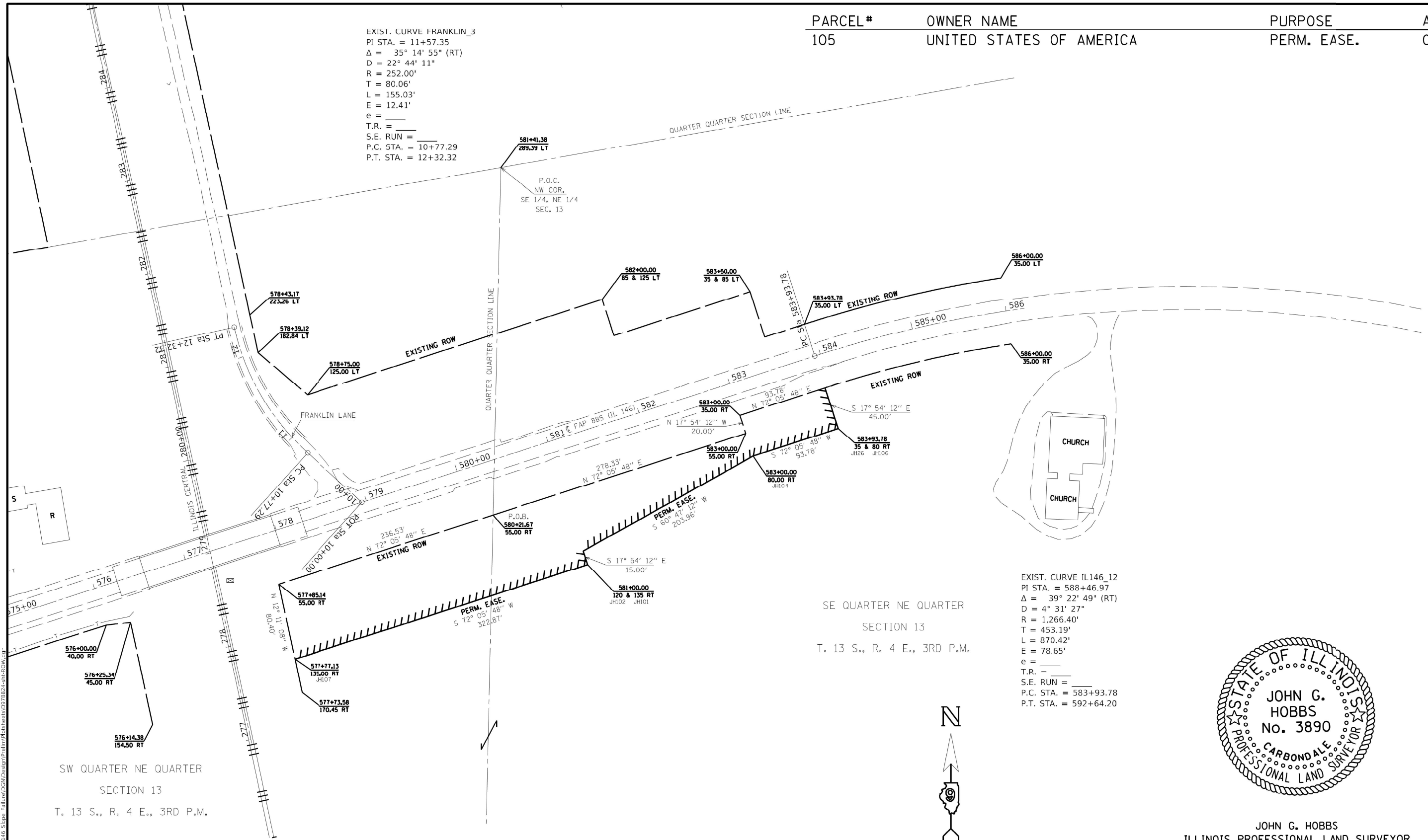
EROSION CONTROL PLAN

SCALE: 1" = 20' SHEET 1 OF 1 SHEETS STA. 578+00 TO STA. 584+00

F.A.P. RTE.	SECTION	COUNTY	TOTAL SHEETS	SHEET NO.
885	111SLP-1	JOHNSON	27	16
CONTRACT NO. 78824				
ILLINOIS FED. AID PROJECT				

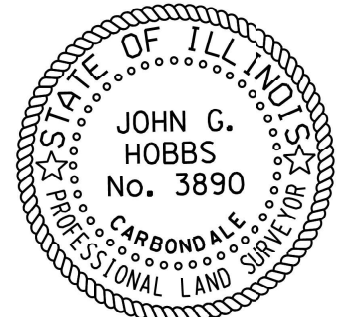
PARCEL #	OWNER NAME	PURPOSE	ACREAGE
105	UNITED STATES OF AMERICA	PERM. EASE.	0.889 AC±

EXIST. CURVE FRANKLIN_3
 PI STA. = 11+57.35
 $\Delta = 35^\circ 14' 55''$ (RT)
 $D = 22^\circ 44' 11''$
 $R = 252.00'$
 $T = 80.06'$
 $L = 155.03'$
 $E = 12.41'$
 $e =$
 T.R. =
 S.E. RUN =
 P.C. STA. = 10+77.29
 P.T. STA. = 12+32.32



MODEL: R:\DWG\DWG\IPL\106-061_0013_IL_146_Slpas_FullScale.dgn
 FILE NAME: 885_13_DOT_D9_PFB_IL_146_Slpas_FullScale.dwg
 MODEL: R:\DWG\DWG\IPL\106-061_0013_IL_146_Slpas_FullScale.dwg
 FILE NAME: 885_13_DOT_D9_PFB_IL_146_Slpas_FullScale.dwg

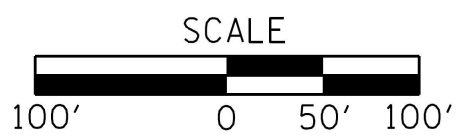
EXIST. CURVE IL146_12
 PI STA. = 588+46.97
 $\Delta = 39^\circ 22' 49''$ (RT)
 $D = 4^\circ 31' 27''$
 $R = 1,266.40'$
 $T = 453.19'$
 $L = 870.42'$
 $E = 78.65'$
 $e =$
 T.R. =
 S.E. RUN =
 P.C. STA. = 583+93.78
 P.T. STA. = 592+64.20



JOHN G. HOBBS
 ILLINOIS PROFESSIONAL LAND SURVEYOR

Current license expires 11/2022.

This professional service conforms to the current Illinois minimum standards for a boundary survey.



SW QUARTER NE QUARTER
 SECTION 13
 T. 13 S., R. 4 E., 3RD P.M.

SE QUARTER NE QUARTER
 SECTION 13
 T. 13 S., R. 4 E., 3RD P.M.

PT#	NORTHING	EASTING
JH26	263815.76	873731.44
JH101	263630.29	873731.63
JH102	263644.56	873478.02
JH104	263744.11	873656.04
JH106	263772.94	873745.28
JH107	263531.03	873175.39

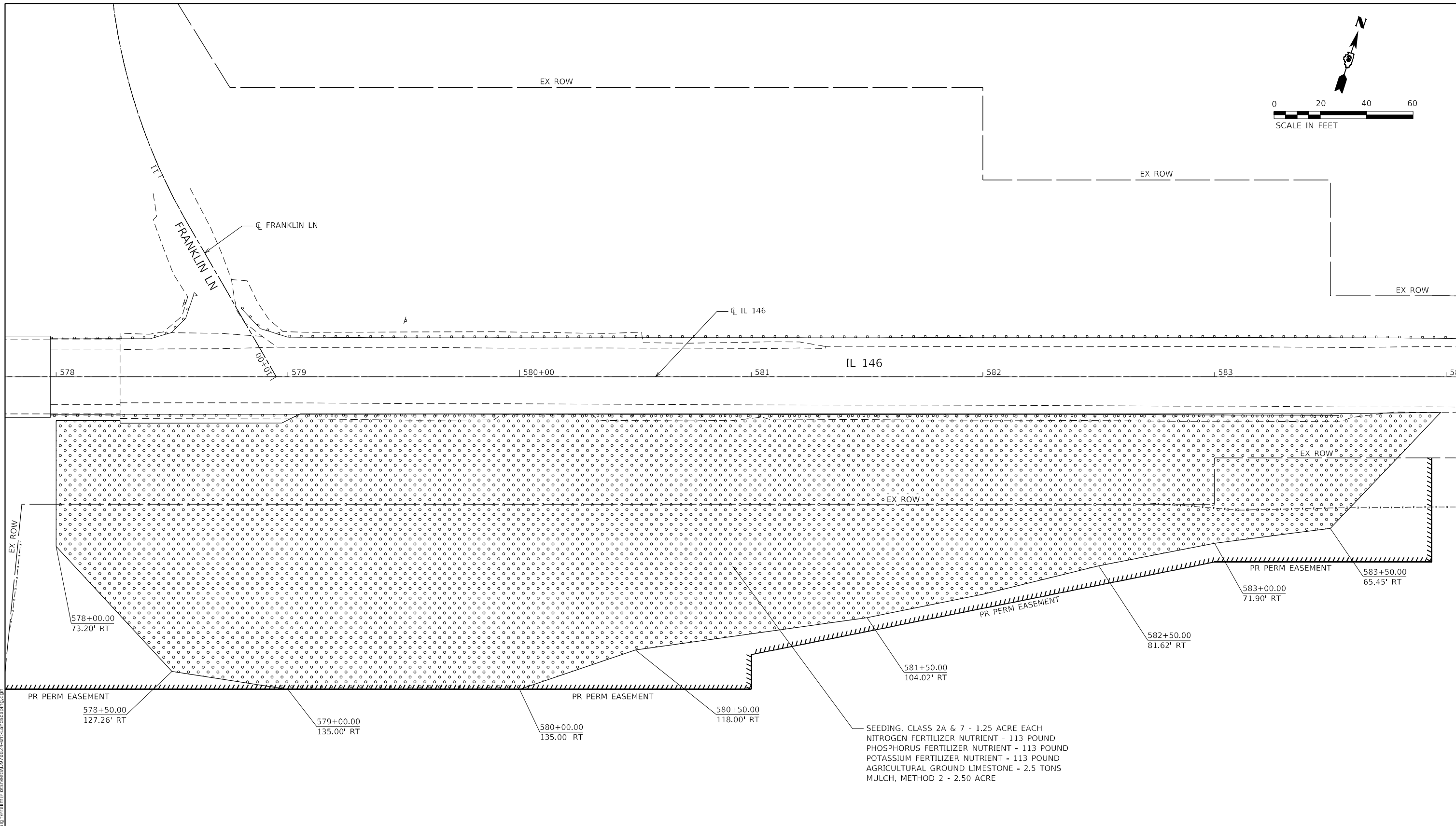
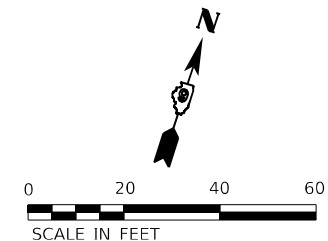
USER NAME = SUSERS	DESIGNED -	REVISED -
PLOT SCALE = SSCALE\$	DRAWN -	REVISED -
PLOT DATE = SDATE\$	CHECKED -	REVISED -
	DATE -	REVISED -

STATE OF ILLINOIS
 DEPARTMENT OF TRANSPORTATION

RIGHT OF WAY SHEET
 FAP 885 (IL 146)

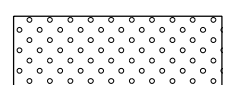
SCALE: 1" = 100' SHEET 1 OF 1 SHEETS STA. 576+00.00 TO STA. 586+00.00

F.A.P. RTE.	SECTION	COUNTY	TOTAL SHEETS	SHEET NO.
885	111SLP-1	JOHNSON	27	17
CONTRACT NO. 78824				
R-99-010-20 ILLINOIS FED. AID PROJECT				



SEEDING, CLASS 2A & 7 - 1.25 ACRE EACH
 NITROGEN FERTILIZER NUTRIENT - 113 POUND
 PHOSPHORUS FERTILIZER NUTRIENT - 113 POUND
 POTASSIUM FERTILIZER NUTRIENT - 113 POUND
 AGRICULTURAL GROUND LIMESTONE - 2.5 TONS
 MULCH, METHOD 2 - 2.50 ACRE

LANDSCAPING LEGEND



SEEDING, CLASS 2A
 NITROGEN FERTILIZER NUTRIENT
 PHOSPHORUS FERTILIZER NUTRIENT
 POTASSIUM FERTILIZER NUTRIENT
 MULCH METHOD 2

MODEL: Defaul...
 FILE NAME: 22030063.13 IL -46 Slope Failure(DCH)Design(Prelim)Plat sheets(097824)4ch4-landscaping.dwg

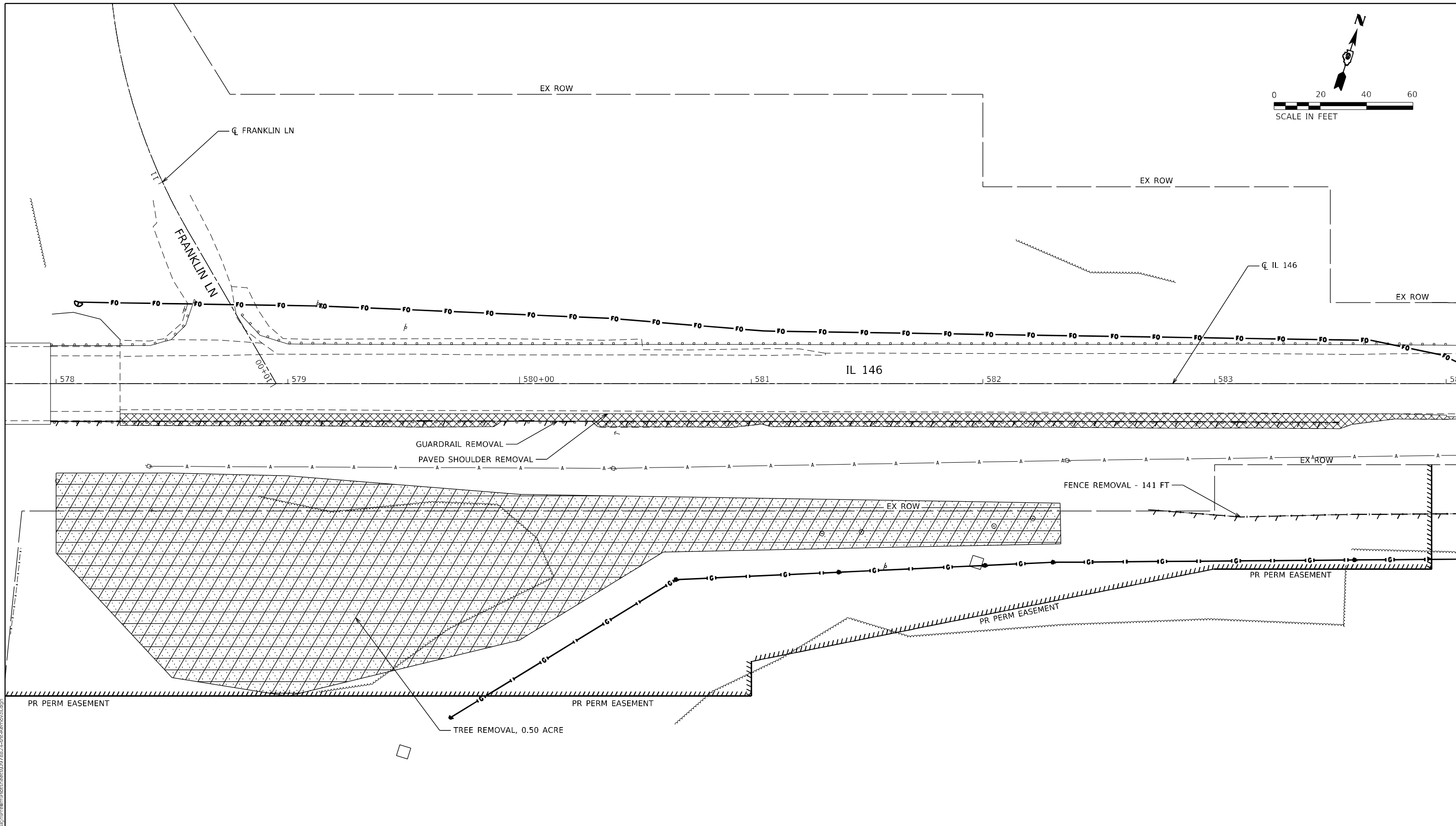
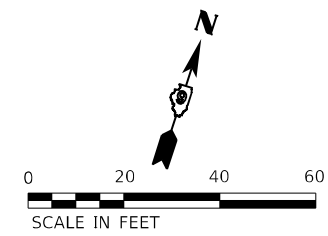


USER NAME = jdardeen	DESIGNED - AN	REVISED -
PLOT SCALE = 40,0000' / in.	DRAWN - AN	REVISED -
PLOT DATE = 8/30/2022	CHECKED - JH	REVISED -
	DATE - 8/30/2022	REVISED -

**STATE OF ILLINOIS
 DEPARTMENT OF TRANSPORTATION**

LANDSCAPING PLAN			
SCALE: 1" = 20'	SHEET 1	OF 1 SHEETS	STA. 578+00 TO STA. 584+00

F.A.P. RTE.	SECTION	COUNTY	TOTAL SHEETS	SHEET NO.
885	111SLP-1	JOHNSON	27	18
CONTRACT NO. 78824				
ILLINOIS FED. AID PROJECT				



- HMA SHOULDER REMOVAL
- TREE REMOVAL, ACRES
- GUARDRAIL OR FENCE REMOVAL

MODEL: Default
 FILE NAME: Z:\30063.13 IL 146 Slope Failure\DCM\Design\Prelim\Releases\1D97824-Lch-Removal.dgn

EFK Moen
Civil Engineering Design

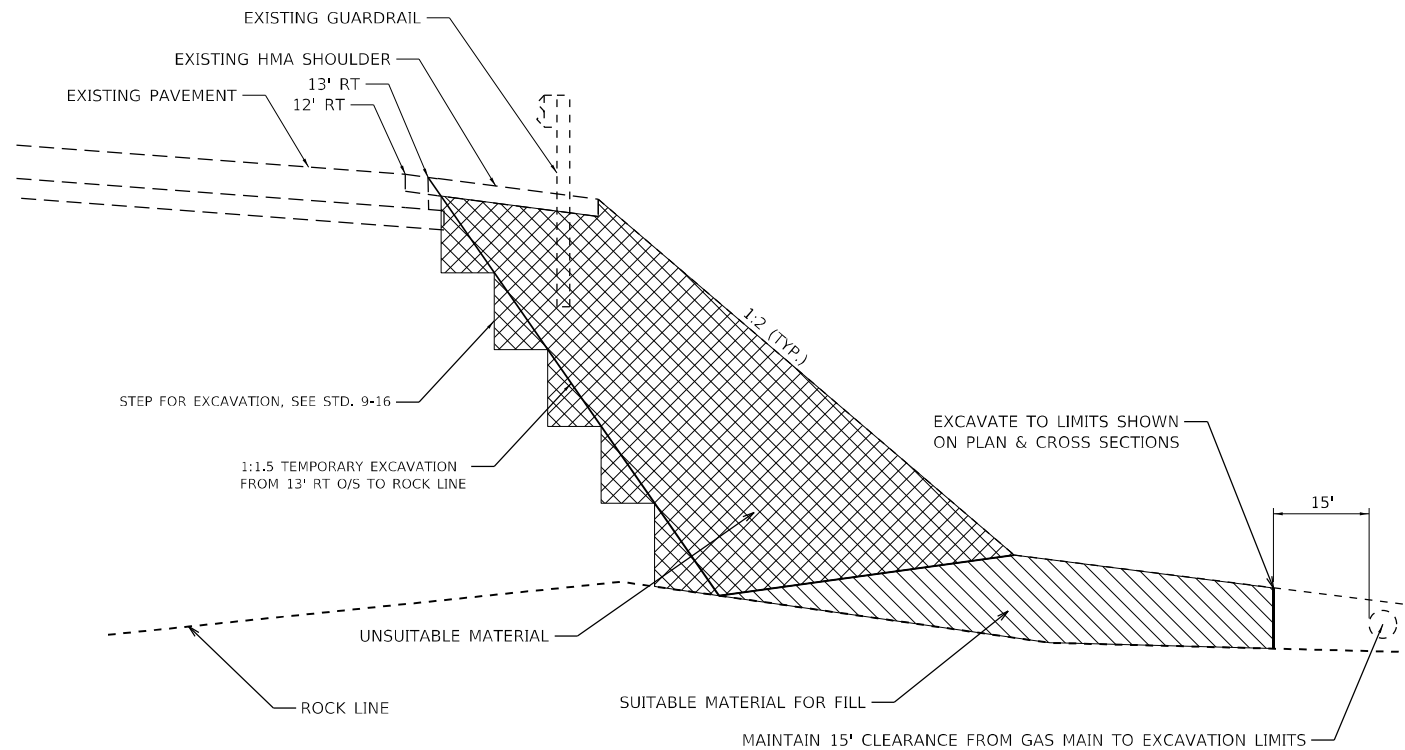
USER NAME = jdardeen	DESIGNED - AN	REVISED -
DRAWN - AN	CHECKED - JH	REVISED -
PLOT SCALE = 40,0000 * / in.	DATE - 8/30/2022	REVISED -
PLOT DATE = 8/30/2022		

**STATE OF ILLINOIS
DEPARTMENT OF TRANSPORTATION**

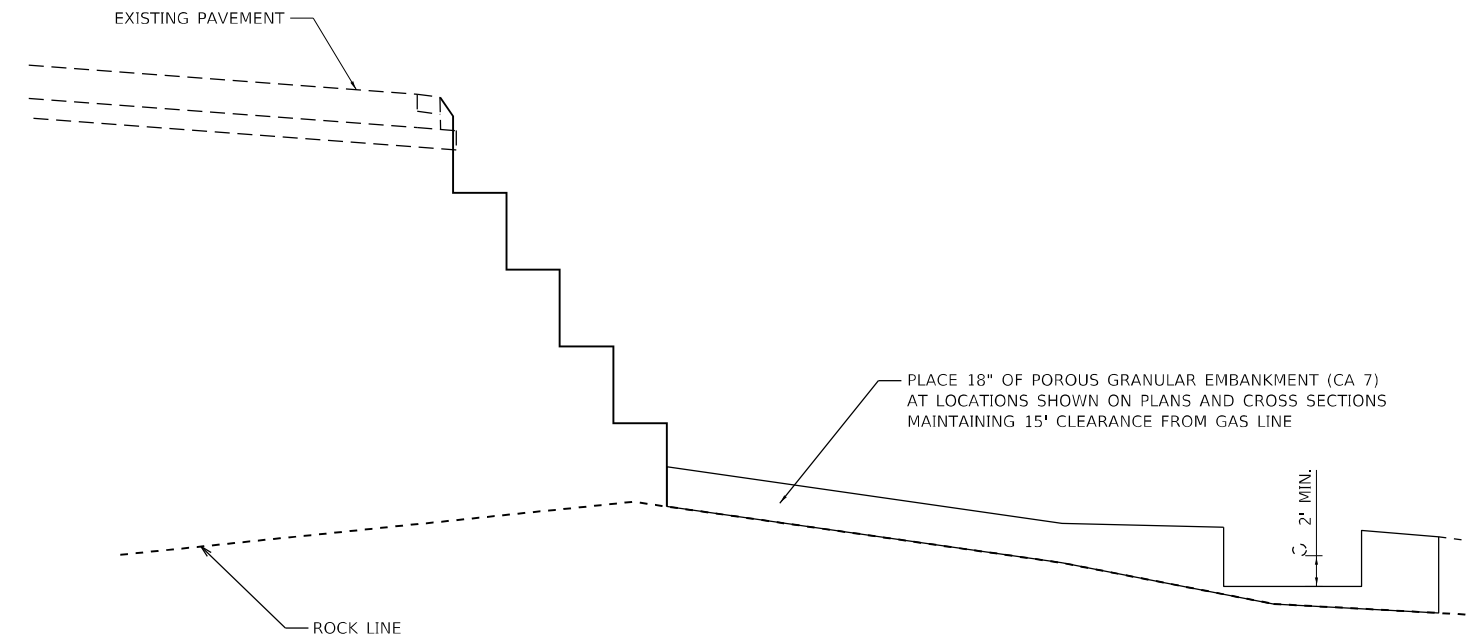
REMOVALS			
SCALE: 1"=20'	SHEET 1	OF 1 SHEETS	STA. 578+00 TO STA. 584+00

F.A.P. RTE.	SECTION	COUNTY	TOTAL SHEETS	SHEET NO.
885	111SLP-1	JOHNSON	27	19
CONTRACT NO. 78824				
ILLINOIS FED. AID PROJECT				

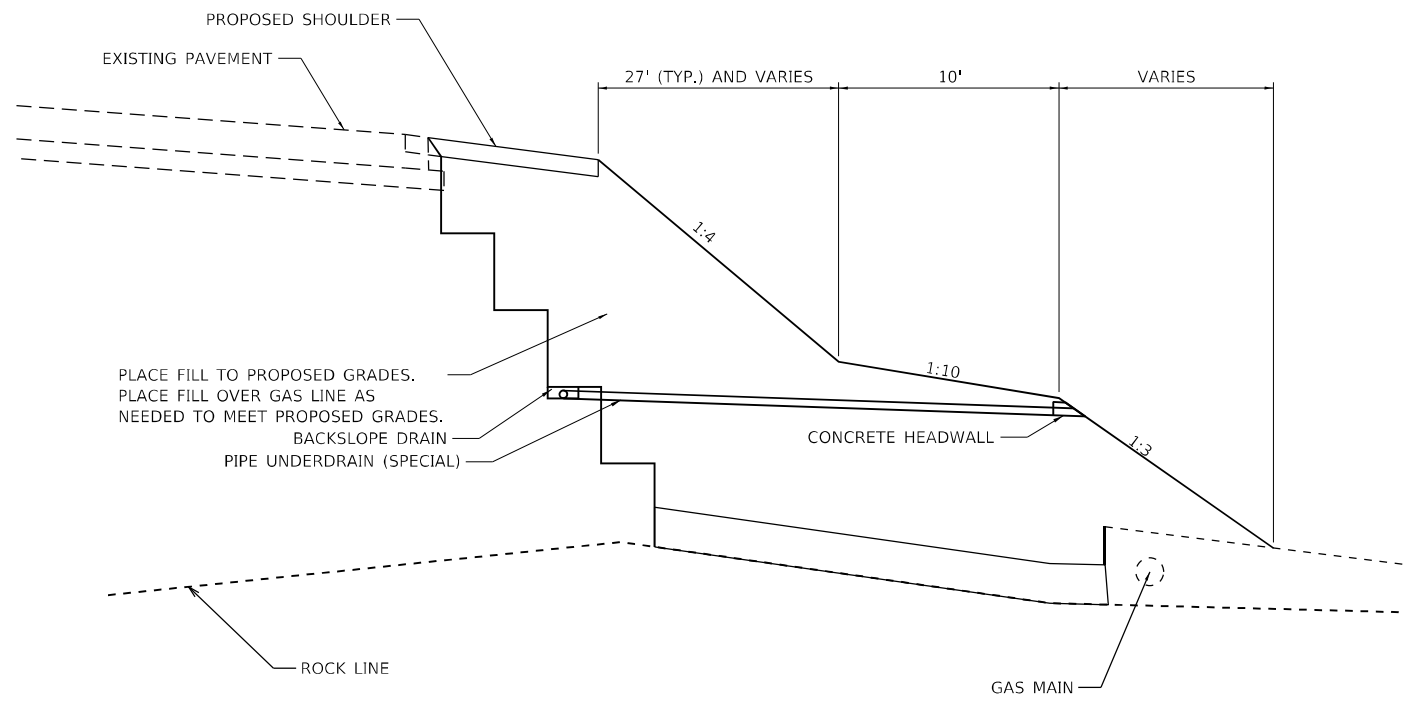
SEQUENCE OF OPERATIONS



STAGE 1 – UNDERCUT EXISTING SLOPE TO ROCK



STAGE 2 – PLACE POROUS GRANULAR EMBANKMENT DRAIN ROCK



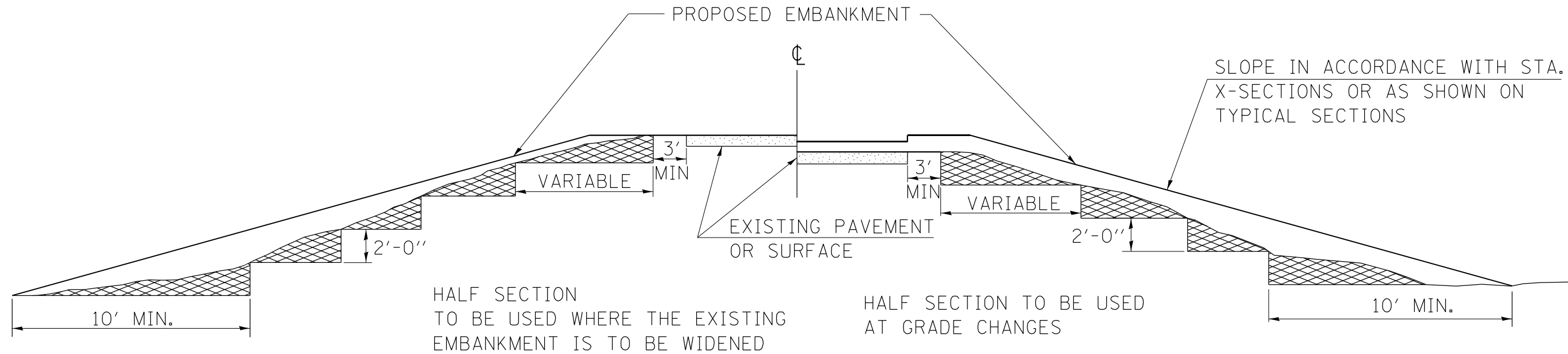
STAGE 3 – BACKFILL TO FINAL SLOPE GRADES

MODEL: D:\efk\... FILE NAME: 22-0063.13 IL -46 Slope Failure\DCM\Design\Prelim\Revised\1115LP-1.dgn

USER NAME = jdardeen	DESIGNED - AN	REVISED -
DRAWN - AN	REVISIONS -	
PLOT SCALE = 100,0000' / in.	CHECKED - JH	REVISIONS -
PLOT DATE = 8/30/2022	DATE - 8/30/2022	REVISIONS -

SCALE: N/A		SHEET 1 OF 3 SHEETS		STA. TO STA.	
F.A.P. RTE. 885	SECTION 1115LP-1	COUNTY JOHNSON	TOTAL SHEETS 27	SHEET NO. 21	CONTRACT NO. 78824
ILLINOIS FED. AID PROJECT					

TYPICAL CROSS SECTION SHOWING STEP CONSTRUCTION ON EXISTING FILL



STEPS SHALL BE CUT IN THE EXISTING SLOPE IN ACCORDANCE WITH ART. 205.03 EXCEPT THAT THE REQUIREMENT THAT STEPS SHALL BE CUT INTO THE EXISTING SLOPE BEFORE THE CONSTRUCTION OF THE EXISTING EMBANKMENT IS STARTED SHALL NOT APPLY. MATERIAL TO BE REMOVED AND REPLACED IN THE EMBANKMENT IN ACCORDANCE WITH ART. 205.04 OF THE STANDARD SPECIFICATIONS. COST TO BE INCLUDED IN THE VARIOUS ITEMS OF EXCAVATION AND NO ADDITIONAL COMPENSATION WILL BE ALLOWED BECAUSE OF THIS WORK.

REVISIONS

REDRAWN	2-15-89
REVISED	8-15-94
CHECKED	6-3-99
RESIZED	5-7-08
REVIEWED	5-17-13
REVISED	4-22-21

STD. 9-16

MODEL: D:\efk\11_146_Slope_Failure\DCM\Design\Prelim\Revised\1115LP-1.dgn
FILE NAME: 21_20063.13 11_146_Slope_Failure\DCM\Design\Prelim\Revised\1115LP-1.dgn

EFK Moen
Civil Engineering Design

USER NAME = jdardeen	DESIGNED - AN	REVISED -
	DRAWN - AN	REVISED -
PLOT SCALE = 100,0000' / in.	CHECKED - JH	REVISED -
PLOT DATE = 8/30/2022	DATE - 8/30/2022	REVISED -

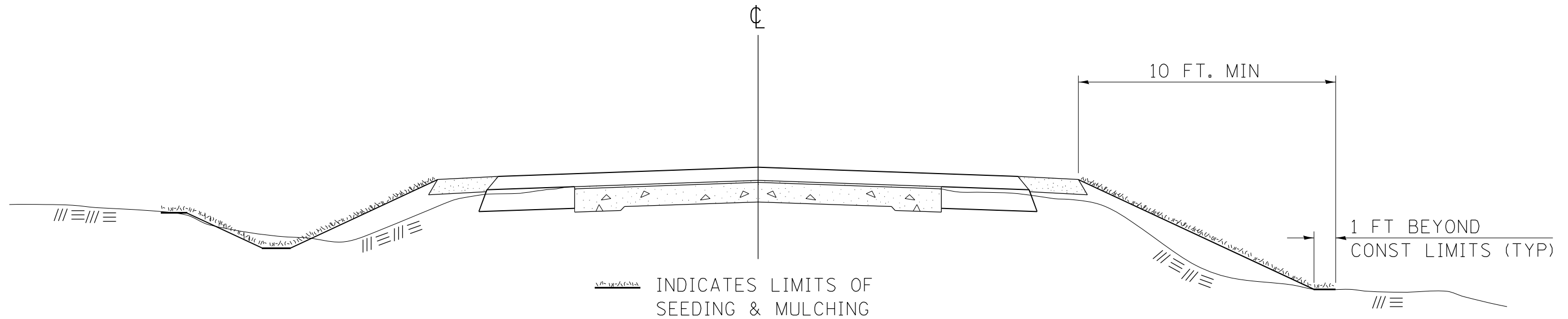
**STATE OF ILLINOIS
DEPARTMENT OF TRANSPORTATION**

DETAILS

SCALE: N/A SHEET 2 OF 3 SHEETS STA. TO STA.

F.A.P. RTE.	SECTION	COUNTY	TOTAL SHEETS	SHEET NO.
885	1115LP-1	JOHNSON	27	22
CONTRACT NO. 78824				
ILLINOIS FED. AID PROJECT				

SEEDING & MULCHING



GENERAL NOTES

IN GENERAL, ALL EARTH SURFACES DISTURBED DURING CONSTRUCTION OPERATIONS SHALL BE SEEDED AND MULCHED UPON COMPLETION OF ALL GRADING OPERATIONS.

ON DETOUR ROADS, SLOPES SHALL BE SEEDED IMMEDIATELY UPON COMPLETION OF ANY GIVEN STAGE GRADING. TEMPORARY SEEDING SHALL BE CLASS 7.

FERTILIZER NUTRIENTS SHALL BE APPLIED TO ALL SEEDED AREAS. LIMESTONE SHALL BE APPLIED TO ALL AREAS OF FINAL SEEDING.

THE RATES OF APPLICATION OF FERTILIZER, MULCH AND LIMESTONE SHALL BE AS SPECIFIED IN THE SPECIAL PROVISIONS FOR ROAD AND BRIDGE CONSTRUCTION.

SECTIONS 250 AND 251 OF THE STANDARD SPECIFICATIONS SHALL GOVERN THIS WORK EXCEPT AS SPECIFIED HEREIN OR AS NOTED IN THE SPECIAL PROVISIONS.

REVISIONS

REDRAWN	2-15-89
REVISED	8-15-94
REVISED	6-3-99
REVISED	3-27-08
REVISED	5-16-13

STD. 9-12

MODEL: D:\efk\11_146_Slope_Failure\DCM\Design\Drawings\Revised\1115LP-1.dwg

EFK Moen
Civil Engineering Design

USER NAME = jdardeen	DESIGNED - AN	REVISED -
	DRAWN - AN	REVISED -
PLOT SCALE = 100,0000' / in.	CHECKED - JH	REVISED -
PLOT DATE = 8/30/2022	DATE - 8/30/2022	REVISED -

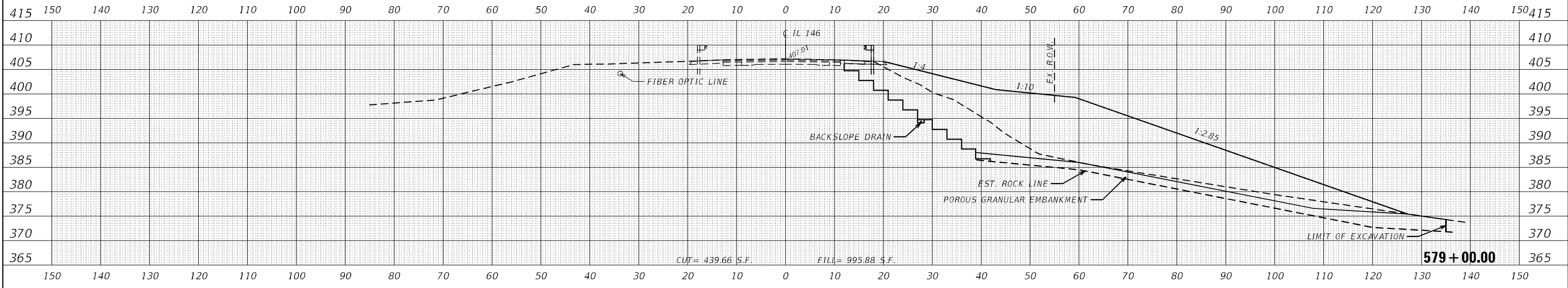
**STATE OF ILLINOIS
DEPARTMENT OF TRANSPORTATION**

DETAILS

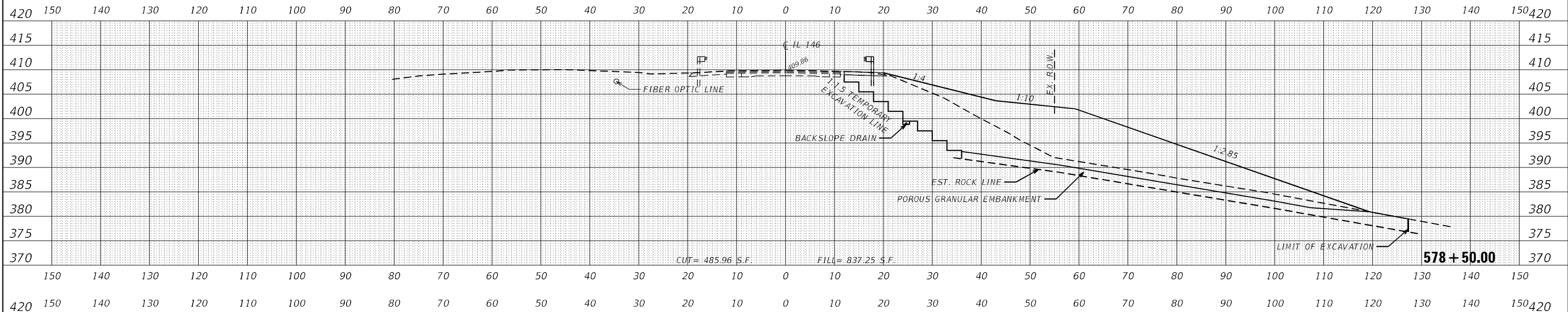
SCALE: N/A SHEET 3 OF 3 SHEETS STA. TO STA.

F.A.P. RTE. 885	SECTION 1115LP-1	COUNTY JOHNSON	TOTAL SHEETS 27	SHEET NO. 23
CONTRACT NO. 78824				
ILLINOIS FED. AID PROJECT				

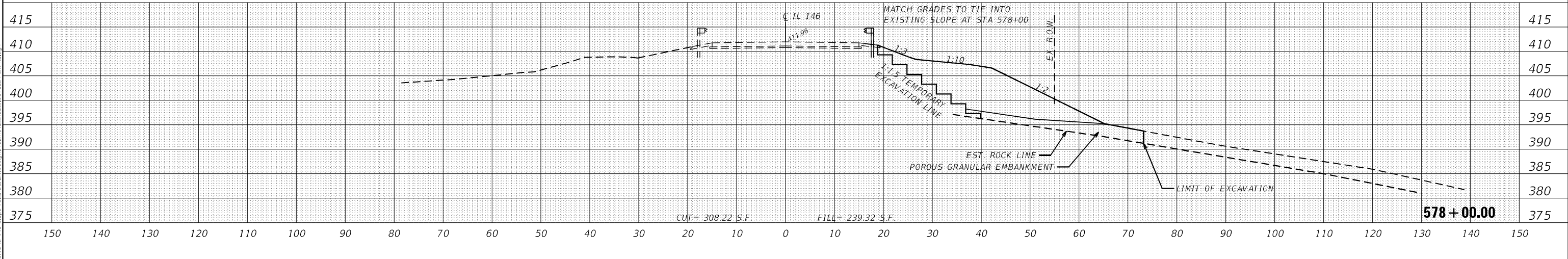
DATE	
BY	
SURVEYED	
PLOTTED	
TEMPLATE	
NOTE BOOK	
AREAS CHECKED	
NO.	



DATE	
BY	
SURVEYED	
PLOTTED	
TEMPLATE	
NOTE BOOK	
AREAS CHECKED	
NO.	



DATE	
BY	
SURVEYED	
PLOTTED	
TEMPLATE	
NOTE BOOK	
AREAS CHECKED	
NO.	



MODEL: TL146_1-1
FILE NAME: Z:\2003\13 TL 146 Slope Failure\DCI\Drawings\Plan\PlanSheet097824-sec-VS.dgn

EFK•Moen
Civil Engineering Design

USER NAME = jdardeen	DESIGNED - AN	REVISED -
	DRAWN - AN	REVISED -
PLOT SCALE = 20,0000' / in.	CHECKED - JH	REVISED -
PLOT DATE = 8/30/2022	DATE - 8/30/2022	REVISED -

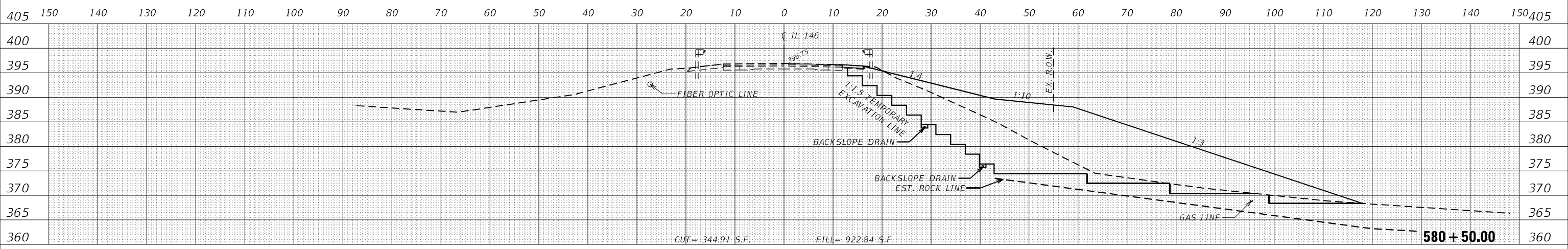
STATE OF ILLINOIS
DEPARTMENT OF TRANSPORTATION

CROSS SECTIONS

SCALE: 1" = 10' SHEET 1 OF 4 SHEETS STA. 578+00.00 TO STA. 579+00.00

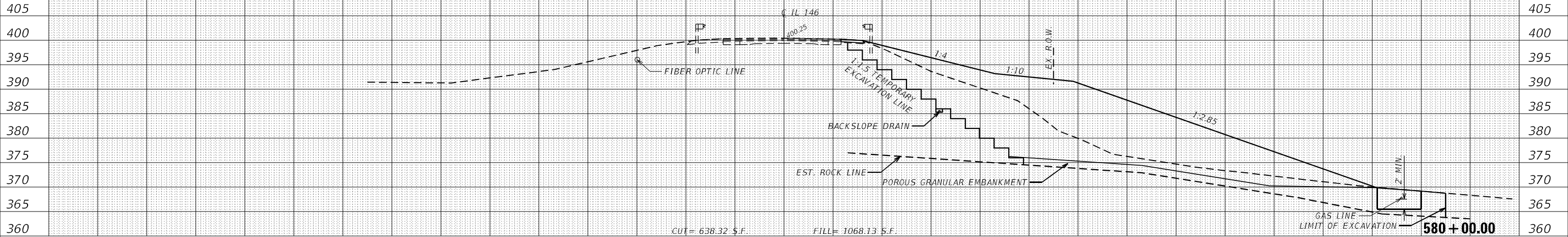
F.A.P. RTE. 885	SECTION 111SLP-1	COUNTY JOHNSON	TOTAL SHEETS 27	SHEET NO. 24
				CONTRACT NO. 78824
ILLINOIS FED. AID PROJECT				

DATE	
BY	
SURVEYED	
PLOTTED	
TEMPLATE	
NOTE BOOK	
AREAS CHECKED	
NO.	



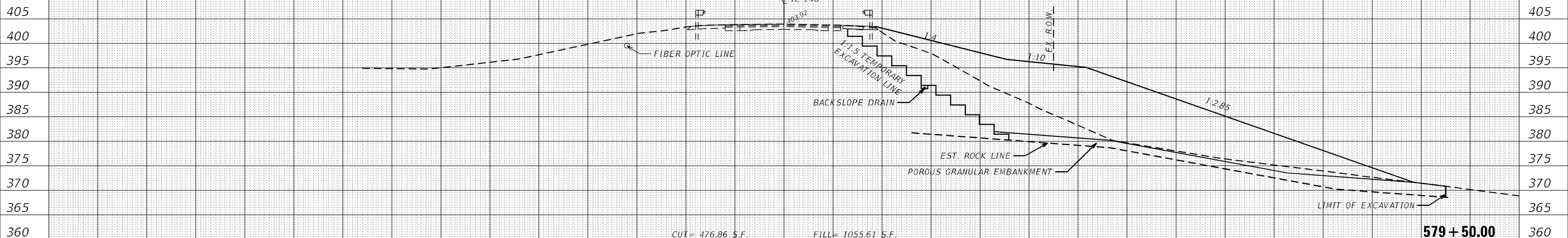
150	140	130	120	110	100	90	80	70	60	50	40	30	20	10	0	10	20	30	40	50	60	70	80	90	100	110	120	130	140	150	
410	150	140	130	120	110	100	90	80	70	60	50	40	30	20	10	0	10	20	30	40	50	60	70	80	90	100	110	120	130	140	150

DATE	
BY	
SURVEYED	
PLOTTED	
TEMPLATE	
NOTE BOOK	
AREAS CHECKED	
NO.	



150	140	130	120	110	100	90	80	70	60	50	40	30	20	10	0	10	20	30	40	50	60	70	80	90	100	110	120	130	140	150	
410	150	140	130	120	110	100	90	80	70	60	50	40	30	20	10	0	10	20	30	40	50	60	70	80	90	100	110	120	130	140	150

DATE	
BY	
SURVEYED	
PLOTTED	
TEMPLATE	
NOTE BOOK	
AREAS CHECKED	
NO.	



150	140	130	120	110	100	90	80	70	60	50	40	30	20	10	0	10	20	30	40	50	60	70	80	90	100	110	120	130	140	150	
410	150	140	130	120	110	100	90	80	70	60	50	40	30	20	10	0	10	20	30	40	50	60	70	80	90	100	110	120	130	140	150

EFK•Moen
Civil Engineering Design

USER NAME = jdardeen	DESIGNED - AN	REVISED -
	DRAWN - AN	REVISED -
PLOT SCALE = 20,0000' / in.	CHECKED - JH	REVISED -
PLOT DATE = 8/30/2022	DATE - 8/30/2022	REVISED -

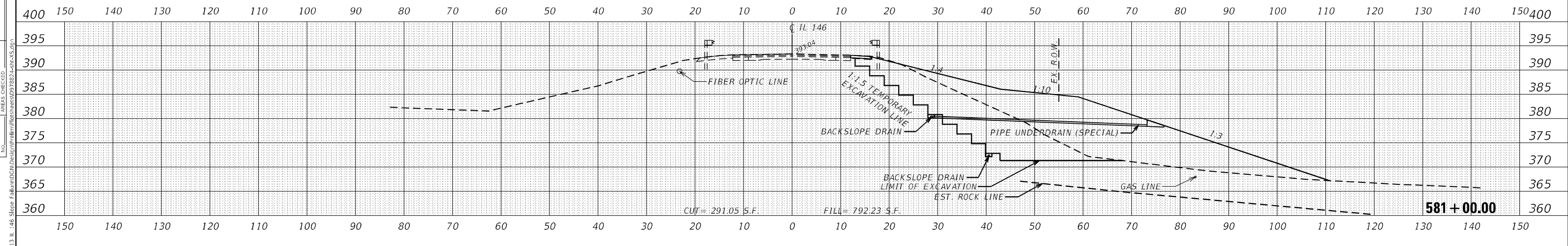
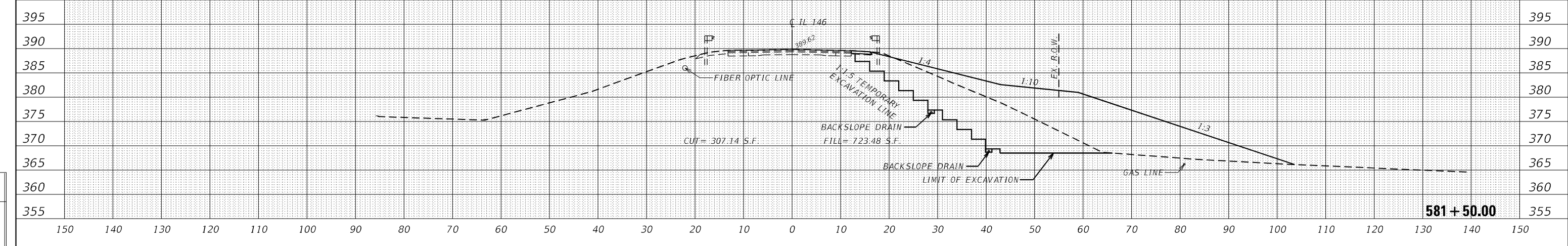
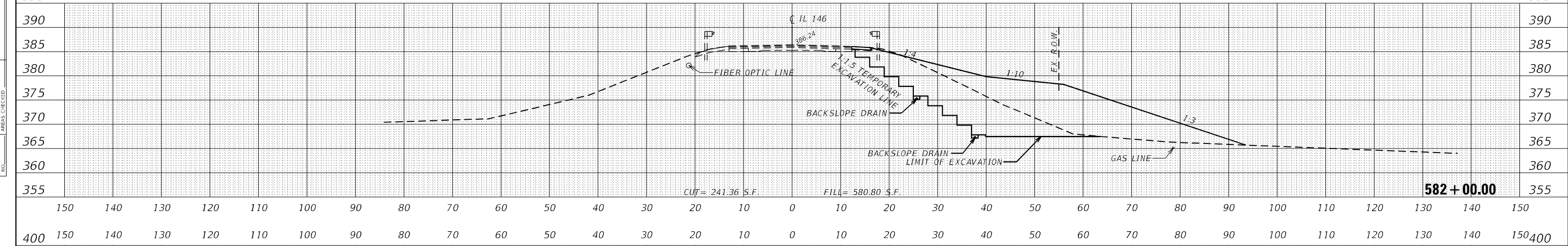
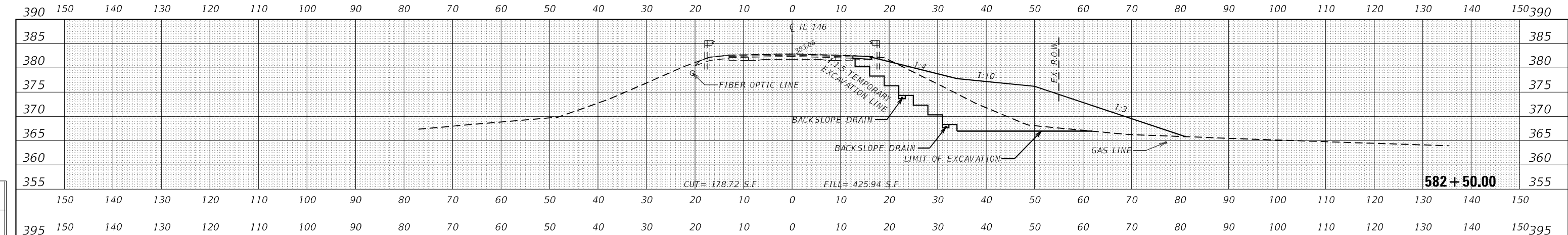
STATE OF ILLINOIS
DEPARTMENT OF TRANSPORTATION

CROSS SECTIONS

SCALE: 1" = 10' SHEET 2 OF 4 SHEETS STA. 579+50.00 TO STA. 580+50.00

F.A.P. RTE. 885	SECTION 111SLP-1	COUNTY JOHNSON	TOTAL SHEETS 27	SHEET NO. 25
CONTRACT NO. 78824			ILLINOIS FED. AID PROJECT	

MODEL: TL146_L1
FILE NAME: 232003_13 TL 146 Slope Failure(DCH)DefinitiveFinalPlanSheet091824-arc-v5.dgn



DATE	BY
DATE	BY
DATE	BY
DATE	BY
DATE	BY
DATE	BY

DATE	BY
DATE	BY
DATE	BY
DATE	BY
DATE	BY

EFK•Moen
Civil Engineering Design

USER NAME = jdardeen	DESIGNED - AN	REVISED -
	DRAWN - AN	REVISED -
PLOT SCALE = 20,0000' / in.	CHECKED - JH	REVISED -
PLOT DATE = 8/30/2022	DATE - 8/30/2022	REVISED -

**STATE OF ILLINOIS
DEPARTMENT OF TRANSPORTATION**

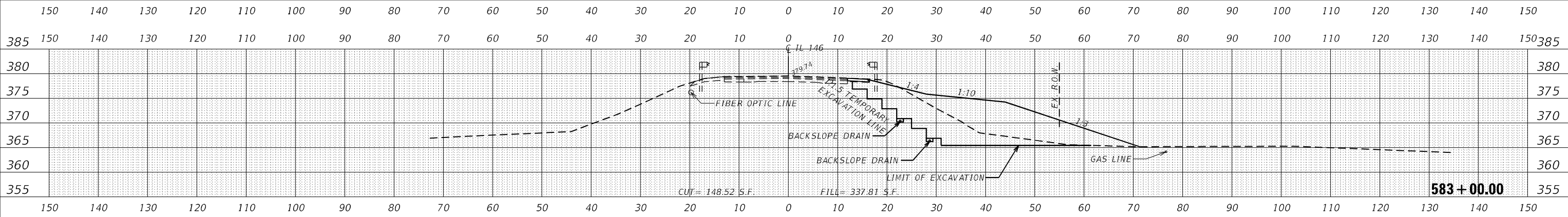
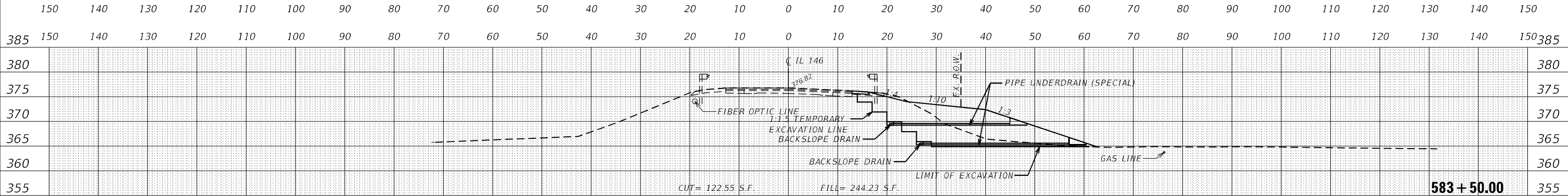
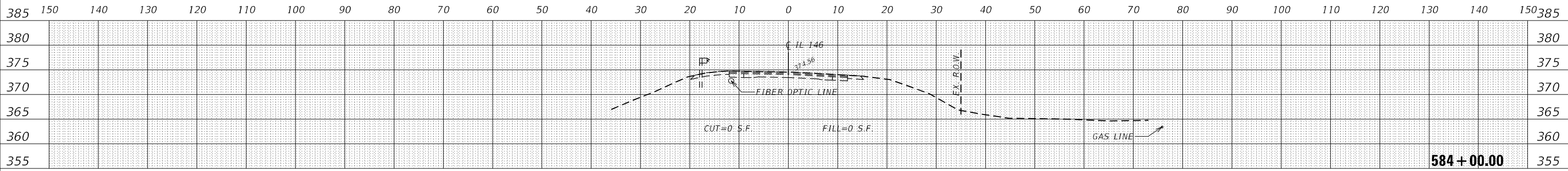
CROSS SECTIONS

SCALE: 1" = 10' SHEET 3 OF 4 SHEETS STA. 581+00.00 TO STA. 582+50.00

F.A.P. RTE. 885	SECTION 1115LP-1	COUNTY JOHNSON	TOTAL SHEETS 27	SHEET NO. 26
ILLINOIS FED. AID PROJECT			CONTRACT NO. 78824	

MODEL: TL146_1-1
FILE NAME: 232003_13 TL 146 Slope Failure(DCH)DefinPrj\m11\p1\res\0978824-act-ks.dgn

DATE	
BY	
SURVEYED	
PLOTTED	
TEMPLATE	
NOTE BOOK	
AREAS CHECKED	
NO.	



DATE	
BY	
SURVEYED	
PLOTTED	
TEMPLATE	
NOTE BOOK	
AREAS CHECKED	
NO.	

MODEL: I:\146_1-1
FILE NAME: 2302063_13 IL 146 Slope Failure\DWG\1111SLP-1.dwg
DATE: 8/30/2022

EFK Moen
Civil Engineering Design

USER NAME = jdardeen	DESIGNED - AN	REVISED -
	DRAWN - AN	REVISED -
PLOT SCALE = 20,0000' / in.	CHECKED - JH	REVISED -
PLOT DATE = 8/30/2022	DATE - 8/30/2022	REVISED -

**STATE OF ILLINOIS
DEPARTMENT OF TRANSPORTATION**

CROSS SECTIONS

SCALE: 1" = 10' SHEET 4 OF 4 SHEETS STA. 583+00.00 TO STA. 584+00.00

F.A.P. RTE. 885	SECTION 111SLP-1	COUNTY JOHNSON	TOTAL SHEETS 27	SHEET NO. 27
CONTRACT NO. 78824				
ILLINOIS FED. AID PROJECT				