

STATE OF ILLINOIS
DEPARTMENT OF TRANSPORTATION

F.A.S. RTE.	SECTION	COUNTY	TOTAL SHEETS	SHEET NO.
788	25RS-2	CLINTON	8	1
		ILLINOIS	CONTRACT NO. 76R76	

D-98-119-22



PROPOSED HIGHWAY PLANS

FAS ROUTE 788 (COLLINS ST/HUEY RD/CH 4)
SECTION 25RS-2
SMART OVERLAY, PATCHING —
CONTRACT MAINTENANCE
CLINTON COUNTY

C-98-151-22

FOR INDEX OF SHEETS, SEE SHEET NO. 2

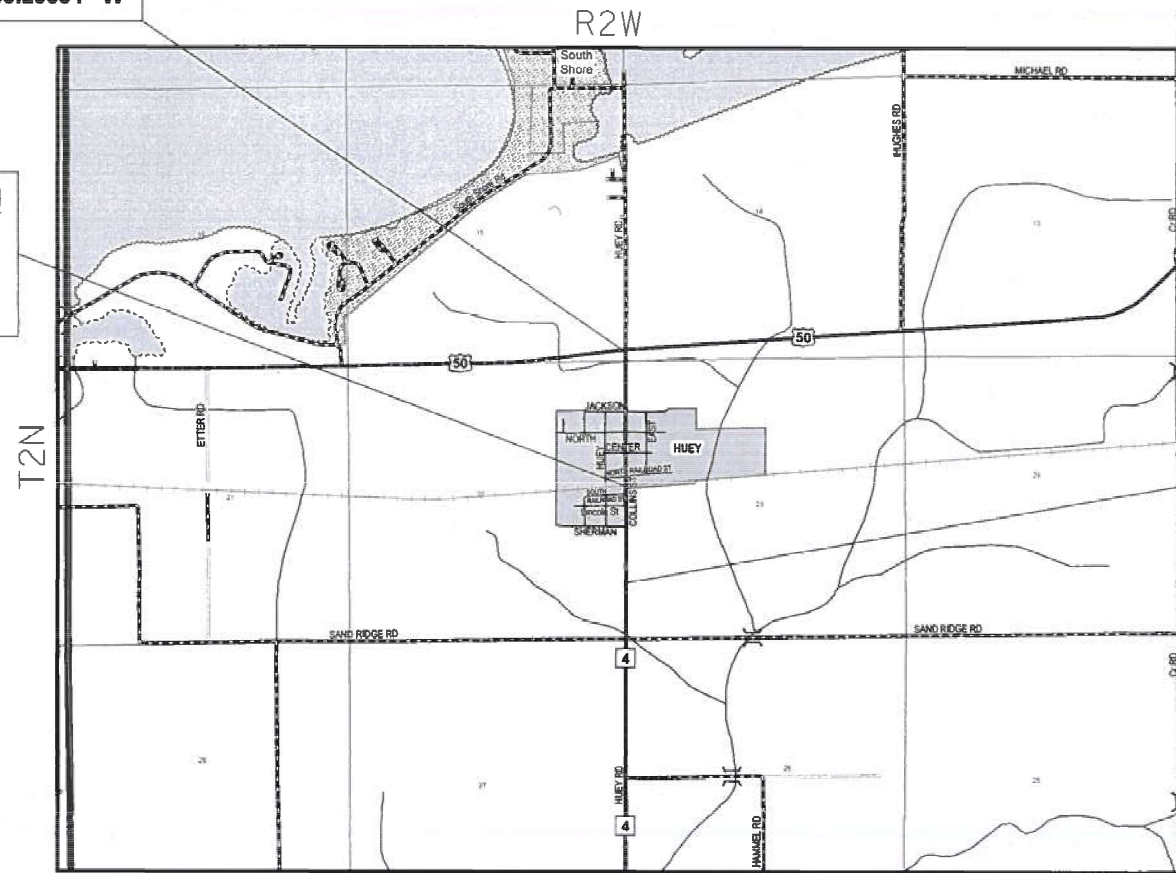
FAS 788 ADT
US 50 TO SAND RIDGE RD
2023 = 700 (ESTIMATED)
SU = 2.3% MU = 2.6%

FUNCTIONAL CLASSIFICATION:
MAJOR COLLECTOR

BEGIN PROJECT
COLLINS STREET/
HUEY ROAD/CH 4
AT US 50
STA. 100 + 75
LAT: 38.61100° N
LONG: 89.29094° W

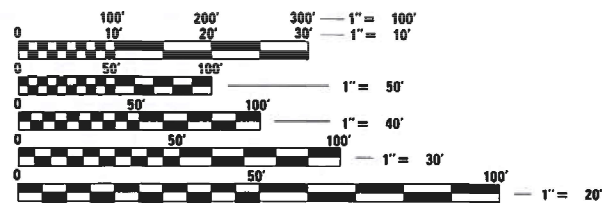
RAILROAD OMISSION
COLLINS STREET/
HUEY ROAD/CH 4
STA. 125 + 82 TO
STA. 125 + 90

END PROJECT
COLLINS STREET/
HUEY ROAD/CH 4
0.2 MILES SOUTH
OF SHERMAN ST
STA. 142 + 66
LAT: 38.59950° N
LONG: 89.29107° W



LOCATION MAP
NOT TO SCALE

GROSS LENGTH = 4,191 FT. = 0.793 MILE
NET LENGTH = 4,183 FT. = 0.792 MILE



FULL SIZE PLANS HAVE BEEN PREPARED USING STANDARD ENGINEERING SCALES. REDUCED SIZED PLANS WILL NOT CONFORM TO STANDARD SCALES. IN MAKING MEASUREMENTS ON REDUCED PLANS, THE ABOVE SCALES MAY BE USED.

J.U.L.I.E.
JOINT UTILITY LOCATION INFORMATION FOR EXCAVATORS
1-800-892-0123
OR 811

PROJECT ENGINEER: BILLIE OWEN
PROJECT MANAGER: BRANDON HUMPHREYS

CONTRACT NO. 76R76

STATE OF ILLINOIS
DEPARTMENT OF TRANSPORTATION

SUBMITTED Feb 1 2023
Karl H. Brown
REGIONAL ENGINEER

March 24, 2023
Steph A. Etkin
ENGINEER OF DESIGN AND ENVIRONMENT

March 24, 2023
Steph M. Smith
DIRECTOR OF HIGHWAYS PROJECT IMPLEMENTATION

PRINTED BY THE AUTHORITY
OF THE STATE OF ILLINOIS

INDEX OF SHEETS

1. COVER SHEET
2. INDEX OF SHEETS, HIGHWAY STANDARDS, GENERAL NOTES, & COMMITMENTS
3. SUMMARY OF QUANTITIES
- 4-5. TYPICAL SECTIONS
- 6-7. SCHEDULES OF QUANTITIES
8. LOCATION MAP SHEET

HIGHWAY STANDARDS

000001-08	STANDARD SYMBOLS, ABBREVIATIONS AND PATTERNS
001006	DECIMAL OF AN INCH AND OF A FOOT
701006-05	OFF-RD OPERATIONS, 2L, 2W, 15' TO 24" FROM PAVEMENT EDGE
701011-04	OFF-RD MOVING OPERATIONS, 2L, 2W, DAY ONLY
701201-05	LANE CLOSURE, 2L, 2W, DAY ONLY, FOR SPEEDS \geq 45 MPH
701301-04	LANE CLOSURE, 2L, 2W, SHORT TIME OPERATIONS
701306-04	LANE CLOSURE, 2L, 2W, SLOW MOVING OPERATIONS DAY ONLY, FOR SPEEDS \geq 45 MPH
701311-03	LANE CLOSURE 2L, 2W MOVING OPERATIONS - DAY ONLY
701336-07	LANE CLOSURE, 2L, 2W, WORK AREAS IN SERIES, FOR SPEEDS \geq 45 MPH
701501-06	URBAN LANE CLOSURE, 2L, 2W, UNDIVIDED
701901-08	TRAFFIC CONTROL DEVICES
780001-05	TYPICAL PAVEMENT MARKINGS
442201-03	CLASS C AND D PATCHES

GENERAL NOTES

1. THE UTILITIES KNOWN TO HAVE FACILITIES WITHIN THE PROJECT AREA ARE AS FOLLOWS:
 - AMEREN ILLINOIS
 - AT&T ILLINOIS
 - CLINTON COUNTY
 - CLINTON COUNTY ELECTRIC COOPERATIVE, INC.
 - VILLAGE OF HUEY
 - LIBERTY UTILITIES
 - METRO
2. NO SURVEY WAS PERFORMED FOR THIS PROJECT AND THE PLANS WERE CREATED USING MICROFILM AND FIELD MEASUREMENTS.
3. THE USE OF VIBRATORY ROLLERS WILL NOT BE PERMITTED FOR THIS PROJECT. THIS DOES NOT RELIEVE THE CONTRACTOR OF DENSITY REQUIREMENTS FOR THE CONSTRUCTION OF THE BITUMINOUS PAVEMENTS AS SPECIFIED IN SECTIONS 406 & 407 OF THE STANDARD SPECIFICATIONS.
4. TWO CHANGEABLE MESSAGE SIGNS SHALL BE REQUIRED FOR THIS PROJECT. THEY WILL BE REQUIRED TWO WEEKS PRIOR TO ANY LANE CLOSURE. LOCATIONS SHALL BE AT THE DIRECTION OF THE RESIDENT ENGINEER.
5. THE TEMPORARY RAMPS USED ON ALL SIDE STREETS AND ENTRANCES SHALL BE 1.5 FEET IN LENGTH SO AS NOT TO INTERFERE WITH THE THRU TRAFFIC LANES.
6. THE FOLLOWING MIXTURE REQUIREMENTS ARE APPLICABLE FOR THIS PROJECT:

MIXTURE USE	SURFACE	PATCHING	SHOULDER (SURFACE)
AC/PG	PG 64-22	PG 64-22	PG 64-22
DESIGN AIR VOIDS	4.0% @ Ndes=70	4.0% @ Ndes=70	4.0% @ Ndes=30
MIX COMPOSITION (GRADATION)	IL 9.5	IL 19.0	IL 9.5L
FRICTION AGG	MIXTURE "C"	MIXTURE "B"	
QUALITY MGMT PROGRAM	QC/QA	QC/QA	QC/QA
MATERIAL TRANSFER DEVICE REQUIRED	NO	NO	NO

PLAN QUANTITIES FOR HOT-MIX ASPHALT ITEMS ARE CALCULATED USING A UNIT WEIGHT OF 112 LBS/SQ YD/IN

COMMITMENTS

NONE

REV. - MS

MODEL: D:\default\...
 FILE: M:\MSA...
 P:\...
 ...

USER NAME = Brandon.Humphreys	DESIGNED -	REVISIONS
	DRAWN -	REVISIONS
PLOT SCALE = 40.0000' / in.	CHECKED -	REVISIONS
PLOT DATE = 2/1/2023	DATE -	REVISIONS

**STATE OF ILLINOIS
DEPARTMENT OF TRANSPORTATION**

**INDEX OF SHEETS, HIGHWAY STANDARDS,
GENERAL NOTES, AND COMMITMENTS**

SCALE: SHEET 1 OF 1 SHEETS STA. TO STA.

F.A.S. RTE.	SECTION	COUNTY	TOTAL SHEETS	SHEET NO.
788	25R5-2	CLINTON	8	2
			CONTRACT NO. 76R76	
		ILLINOIS	FED. AID PROJECT	

MODEL: Default
 FILE: \\blmfc-pw-bufile.com\P\DOT\Documents\DOT Office\Dir\dir: E:\Project\08765765\CAD\Drawings\08765765-Sub-500.dwg

CODE NO.	ITEM	UNIT	TOTAL QUANTITY	CONSTR. CODE
				100% STATE
				ROADWAY
				0005 RURAL
40600290	BITUMINOUS MATERIALS (TACK COAT)	POUND	4109	4109
40600370	LONGITUDINAL JOINT SEALANT	FOOT	4109	4109
40600990	TEMPORARY RAMP	SQ YD	159	159
40604052	H01-MIX ASPHALT SURFACE COURSE, IL-9.5, MIX "C", N/U	TON	769	769
44000155	HOT-MIX ASPHALT SURFACE REMOVAL, 1 1/2"	SQ YD	9265	9265
44201815	CLASS D PATCHES, TYPE II, 14 INCH	SQ YD	442	442
44201819	CLASS D PATCHES, TYPE III, 14 INCH	SQ YD	193	193
44201821	CLASS D PATCHES, TYPE IV, 14 INCH	SQ YD	257	257
48102100	AGGREGATE WEDGE SHOULDER, TYPE B	TON	102	102
48203100	HOT-MIX ASPHALT SHOULDERS	TON	6	6
67000400	ENGINEER'S FIELD OFFICE, TYPE A	CAL MO	3	3
67100100	MOBILIZATION	L SUM	1	1
70100450	TRAFFIC CONTROL AND PROTECTION, STANDARD 701201	L SUM	1	1
70100460	TRAFFIC CONTROL AND PROTECTION, STANDARD 701306	L SUM	1	1

CODE NO.	ITEM	UNIT	TOTAL QUANTITY	CONSTR. CODE
				100% STATE
				ROADWAY
				0005 RURAL
70100600	TRAFFIC CONTROL AND PROTECTION, STANDARD 701336	L SUM	1	1
70102620	TRAFFIC CONTROL AND PROTECTION, STANDARD 701501	L SUM	1	1
70107025	CHANGEABLE MESSAGE SIGN	CAL DA	28	28
70300100	SHORT TERM PAVEMENT MARKING	FOOT	384	384
70300150	SHORT TERM PAVEMENT MARKING REMOVAL	SQ FT	45	45
70300211	TEMPORARY PAVEMENT MARKING LETTERS AND SYMBOLS - PAINT	SQ FT	124	124
70300221	TEMPORARY PAVEMENT MARKING - LINE 4" - PAINT	FOOT	9396	9396
70300281	TEMPORARY PAVEMENT MARKING - LINE 24" - PAINT	FOOT	60	60
* 78000100	THERMOPLASTIC PAVEMENT MARKING - LETTERS AND SYMBOLS	SQ FT	124	124
* 78000200	THERMOPLASTIC PAVEMENT MARKING - LINE 4"	FOOT	9396	9396
* 78000650	THERMOPLASTIC PAVEMENT MARKING - LINE 24"	FOOT	60	60
78300202	PAVEMENT MARKING REMOVAL - WATER BLASTING	SQ FT	3194	3194
Z0048665	RAILROAD PROTECTIVE LIABILITY INSURANCE	L SUM	1	1

* SPECIALTY ITEM

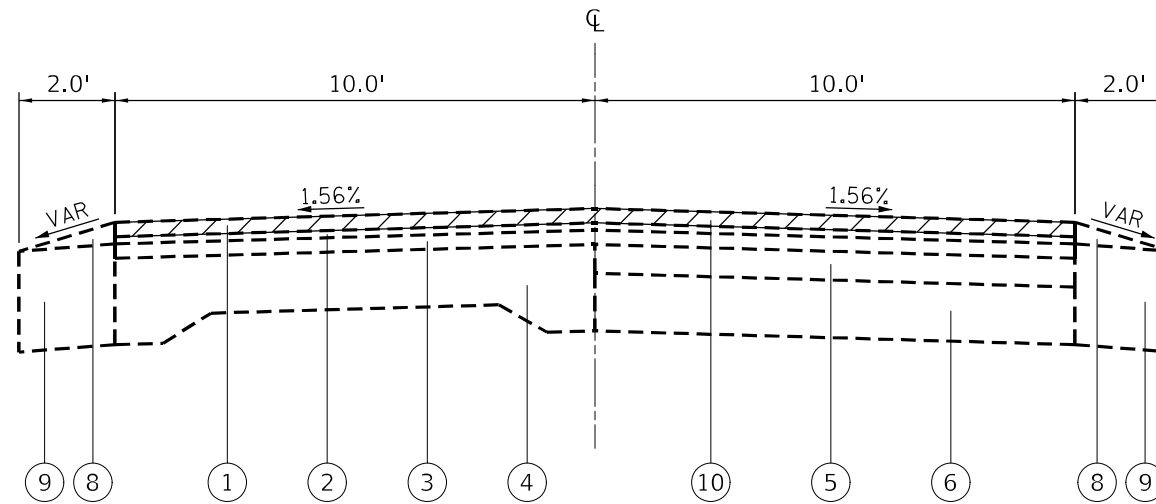
USER NAME = Brandon.Humphreys	DESIGNED -	REVISED -
	DRAWN -	REVISED -
PLOT SCALE = 40,0000 * / in.	CHECKED -	REVISED -
PLOT DATE = 2/1/2023	DATE -	REVISED -

**STATE OF ILLINOIS
DEPARTMENT OF TRANSPORTATION**

SUMMARY OF QUANTITIES

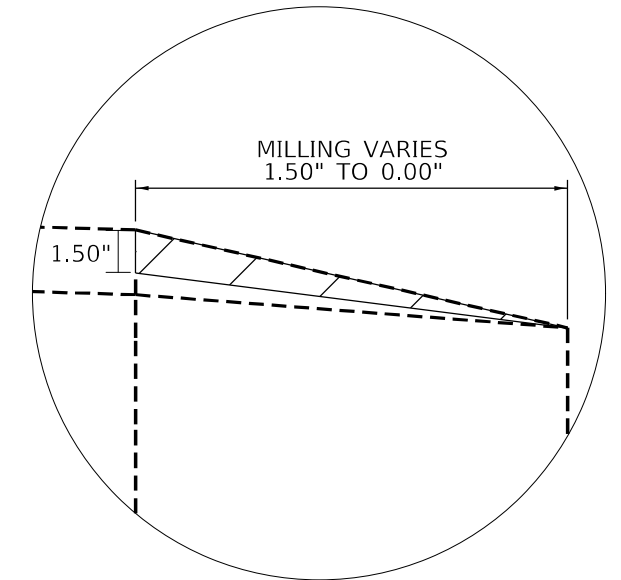
SCALE: NTS SHEET 1 OF 1 SHEETS STA. TO STA.

F.A.S. RTE.	SECTION	COUNTY	TOTAL SHEETS	SHEET NO.
788	25R5-2	CLINTON	8	3
ILLINOIS FED. AID PROJECT			CONTRACT NO. 76R76	

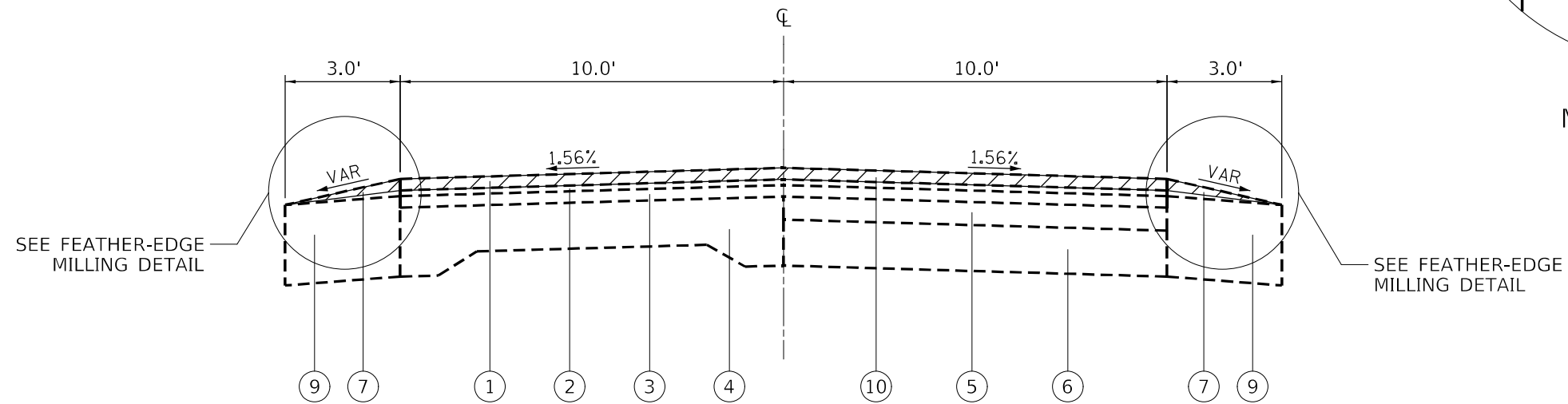


**EXISTING TYPICAL SECTION
FAS 788 (HUEY RD / COLLINS ST)**

STA 100+00 TO STA 123+82
STA 125+90 TO STA 141+92



**FEATHER-EDGE
MILLING DETAIL**

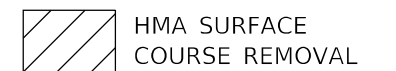


**EXISTING TYPICAL SECTION
FAS 788 (HUEY RD / COLLINS ST)**

STA 123+82 TO STA 125+82
RAILROAD OMISSION: STA 125+82 TO STA 125+90

LEGEND

- | | | |
|--|--|--|
| ① EXISTING BITUMINOUS SURFACE COURSE, 1 1/2" | ⑤ EXISTING BITUMINOUS WIDENING, 3" | ⑨ EXISTING STABILIZED SHOULDERS, 9" |
| ② EXISTING BITUMINOUS LEVELING BINDER, 3/4" | ⑥ EXISTING SUBBASE GRANULAR MATERIAL, TY C, 6" | ⑩ PROPOSED HOT-MIX ASPHALT SURFACE REMOVAL, 1 1/2" |
| ③ EXISTING BITUMINOUS RESURFACING | ⑦ EXISTING HOT-MIX ASPHALT SHOULDER, 2 1/4" | ⑪ PROPOSED HOT-MIX ASPHALT SURFACE COURSE, 1 1/2" |
| ④ EXISTING P.C.C. PAVEMENT, 9"-6"-9" | ⑧ EXISTING AGGREGATE SHOULDERS, TYPE B | ⑫ PROPOSED HOT-MIX ASPHALT SHOULDERS |
| | | ⑬ PROPOSED AGGREGATE WEDGE SHOULDER, TYPE B |
| | | ⑭ PROPOSED TACK COAT |
| | | ⑮ PROPOSED LONGITUDINAL JOINT SEALANT |



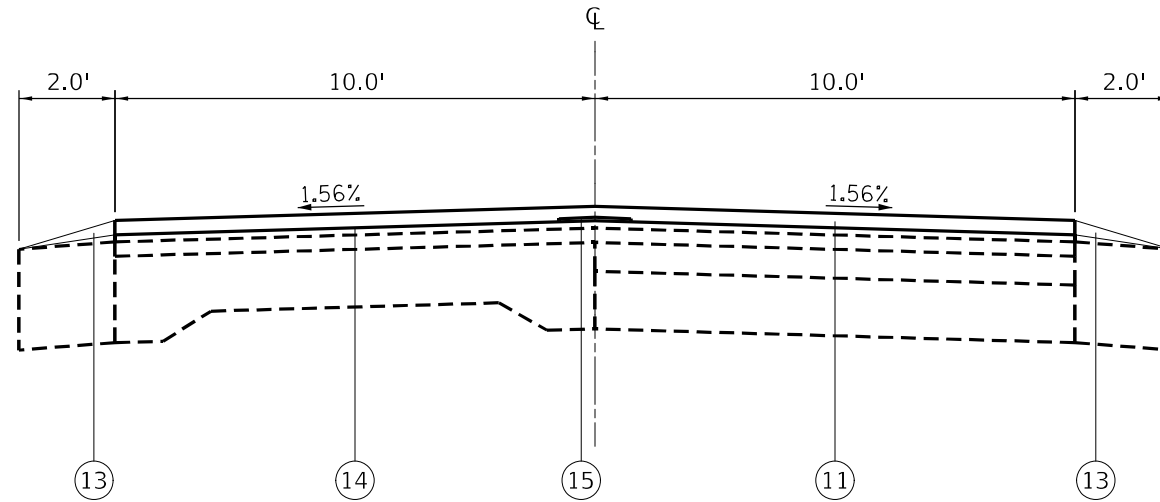
MODEL: Default
FILE: \\MAILSrv\public\aw\becker\com\p\DOT\Documents\DOT_Offices\Dir\dr. B\Project\0876878\CAD\Drawings\CAD\Drawings\0876878\typical.dwg

USER NAME = Brandon.Humphreys	DESIGNED -	REVISED -
	DRAWN -	REVISED -
PLOT SCALE = 40,0000 * / in.	CHECKED -	REVISED -
PLOT DATE = 2/1/2023	DATE -	REVISED -

**STATE OF ILLINOIS
DEPARTMENT OF TRANSPORTATION**

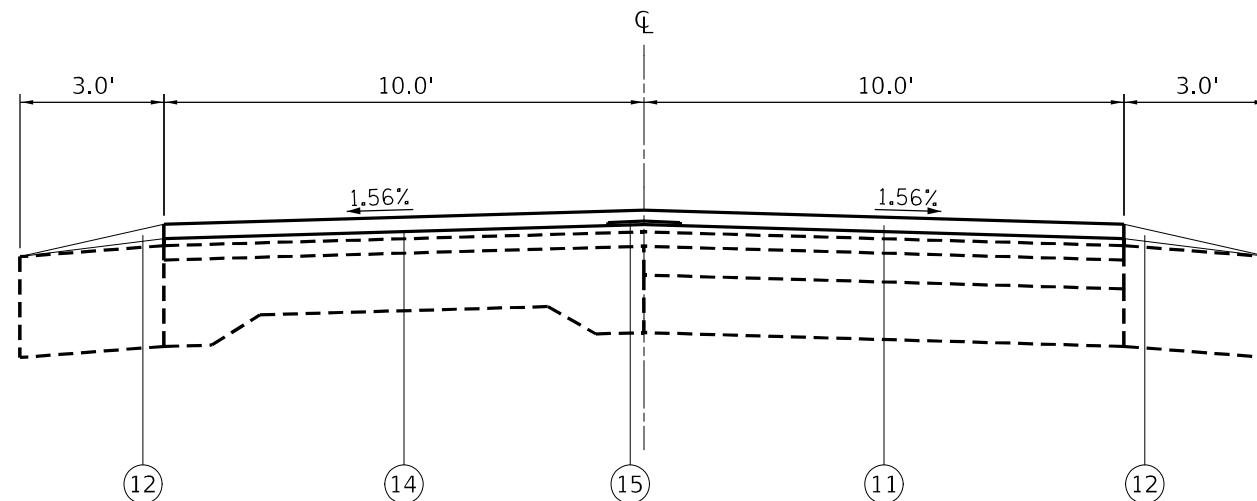
TYPICAL SECTIONS	
SCALE: N/A	SHEET 1 OF 2 SHEETS
STA.	TO STA.

F.A.S. RTE.	SECTION	COUNTY	TOTAL SHEETS	SHEET NO.
788	25RS-2	CLINTON	8	4
CONTRACT NO. 76R76				
ILLINOIS FED. AID PROJECT				



PROPOSED TYPICAL SECTION
FAS 788 (HUEY RD / COLLINS ST)

STA 100+00 TO STA 123+82
 STA 125+90 TO STA 141+92



PROPOSED TYPICAL SECTION
FAS 788 (HUEY RD / COLLINS ST)

STA 123+82 TO STA 125+82
 RAILROAD OMISSION: STA 125+82 TO STA 125+90

LEGEND

- | | | |
|--|--|--|
| ① EXISTING BITUMINOUS SURFACE COURSE, 1 1/2" | ⑤ EXISTING BITUMINOUS WIDENING, 3" | ⑨ EXISTING STABILIZED SHOULDERS, 9" |
| ② EXISTING BITUMINOUS LEVELING BINDER, 3/4" | ⑥ EXISTING SUBBASE GRANULAR MATERIAL, TY C, 6" | ⑩ PROPOSED HOT-MIX ASPHALT SURFACE REMOVAL, 1 1/2" |
| ③ EXISTING BITUMINOUS RESURFACING | ⑦ EXISTING HOT-MIX ASPHALT SHOULDER, 2 1/4" | ⑪ PROPOSED HOT-MIX ASPHALT SURFACE COURSE, 1 1/2" |
| ④ EXISTING P.C.C. PAVEMENT, 9"-6"-9" | ⑧ EXISTING AGGREGATE SHOULDERS, TYPE B | ⑫ PROPOSED HOT-MIX ASPHALT SHOULDERS |
| | | ⑬ PROPOSED AGGREGATE WEDGE SHOULDER, TYPE B |
| | | ⑭ PROPOSED TACK COAT |
| | | ⑮ PROPOSED LONGITUDINAL JOINT SEALANT |

MODEL: Default
 FILE NAME: \\pulsar-new-beckley.com\pulsar\DOT\Documents\DOT_Offices\Dir\dr. B\Project\08768768\CAD\Drawings\CAD\Drawings\08768768-01-01-01.dwg

USER NAME = Brandon.Humphreys	DESIGNED -	REVISED -
	DRAWN -	REVISED -
PLOT SCALE = 40,0000 * / in.	CHECKED -	REVISED -
PLOT DATE = 2/1/2023	DATE -	REVISED -

STATE OF ILLINOIS
DEPARTMENT OF TRANSPORTATION

TYPICAL SECTIONS			
SCALE: N/A	SHEET 2	OF 2 SHEETS	STA. TO STA.

F.A.S. RTE.	SECTION	COUNTY	TOTAL SHEETS	SHEET NO.
788	25RS-2	CLINTON	8	5
			CONTRACT NO. 76R76	
		ILLINOIS	FED. AID PROJECT	

RESURFACING SCHEDULE										
LOCATION			LENGTH	HMA SURFACE COURSE, 1L-9.5, MIX "C", N70, 1 1/2"	BITUMINOUS MATERIALS (TACK COAT)	LONGITUDINAL JOINT SEALANT	HMA SURFACE REMOVAL, 1 1/2"	AGGREGATE WEDGE SHOULDER, TYPE B	HOT-MIX ASPHALT SHOULDERS	NOTES
STATION	TO	STATION	FOOT	TON	POUND	FOOT	SQ YD	TON	TON	
HUEY ROAD/COLLINS STREET/CH 4										
100+75	TO	123+82	2307	431	2307	2307	5127	60		
123+82	TO	125+82	200	38	200	200	578		6	
125+82	TO	125+90	8							RAILROAD OMISSION
125+90	TO	141+92	1602	300	1602	1602	3560	42		
TOTALS				769	4109	4109	9265	102	6	

PATCHING SCHEDULE (1 OF 2)										
STATION	TO	STATION	LANE	LENGTH	WIDTH	CLASS D PATCHES			NOTES	
						14-INCH	14-INCH	14-INCH		
						TYPE II	TYPE III	TYPE IV		
FOOT	FOOT	SQ YD	SQ YD	SQ YD						
HUEY ROAD/COLLINS ST/CH 4										
101+30	TO	101+88	NB	58	5			32.3	HALF-LANE EDGELINE	
103+06	TO	103+30	NB	24	5	13.4			HALF-LANE EDGELINE	
103+92	TO	105+08	NB	116	5			64.5	HALF-LANE EDGELINE	
105+88	TO	105+98	NB	10	10	11.2				
105+88	TO	105+98	SB	10	10	11.2				
107+40	TO	107+48	NB	8	10	8.9				
108+90	TO	109+20	SB	30	5		16.7		HALF-LANE EDGELINE	
109+65	TO	110+65	SB	100	5			55.6	HALF-LANE EDGELINE	
111+00	TO	111+42	SB	42	5		23.4			
111+80	TO	112+12	SB	32	5		17.8			
113+90	TO	113+98	SB	8	10	8.9				
115+18	TO	115+24	SB	6	10	6.7				
115+66	TO	115+72	SB	6	10	6.7				
116+66	TO	116+72	NB	6	10	6.7				
117+70	TO	117+76	NR	6	10	6.7				
118+00	TO	118+10	SB	10	10	11.2				
118+04	TO	118+10	NB	6	10	6.7				
118+32	TO	118+66	SB	34	5		18.9		HALF-LANE EDGELINE	
119+26	TO	119+34	NB	8	10	8.9				
119+96	TO	120+04	NB	8	10	8.9				
121+16	TO	121+22	NB	6	10	6.7				
121+98	TO	122+04	NB	6	10	6.7				
122+36	TO	122+44	NB	8	10	8.9				
122+36	TO	122+44	SB	8	10	8.9				
122+56	TO	122+64	SB	8	10	8.9				
122+80	TO	122+86	NB	6	10	6.7				
124+22	TO	124+32	NB	10	10	11.2				
124+74	TO	124+80	NB	6	10	6.7				
125+12	TO	125+18	NB	6	10	6.7				
125+44	TO	125+50	SB	6	10	6.7				
125+74	TO	125+82	NB	8	10	8.9				
126+00	TO	126+10	NB	10	10	11.2				
SUBTOTALS						214.3	76.8	152.4		

PATCHING SCHEDULE, CONTINUED (2 OF 2)										
STATION	TO	STATION	LANE	LENGTH	WIDTH	CLASS D PATCHES			NOTES	
						14-INCH	14-INCH	14-INCH		
						TYPE II	TYPE III	TYPE IV		
FOOT	FOOT	SQ YD	SQ YD	SQ YD						
HUEY ROAD/COLLINS ST/CH 4										
126+00	TO	126+10	SB	10	10	11.2				
126+24	TO	126+36	NB	12	10	13.4				
126+98	TO	127+04	NB	6	10	6.7				
127+10	TO	127+58	SB	48	5			26.7	HALF-LANE EDGELINE	
127+68	TO	127+76	NB	8	10	8.9				
128+64	TO	129+00	SB	36	5		20.0		HALF-LANE EDGELINE	
128+95	TO	129+30	NB	35	5		19.5		HALF-LANE CENTERLINE	
129+50	TO	129+56	NB	6	10	6.7				
129+78	TO	129+84	NB	6	10	6.7				
130+42	TO	130+84	NB	42	5		23.4		HALF-LANE EDGELINE	
131+58	TO	131+66	SB	8	10	8.9				
131+92	TO	131+98	NB	6	10	6.7				
131+92	TO	131+98	SB	6	10	6.7				
132+35	TO	132+67	NB	32	5		17.8		HALF-LANE EDGELINE	
132+78	TO	132+86	NR	8	10	8.9				
133+50	TO	133+58	NB	8	10	8.9				
133+66	TO	133+72	SB	6	10	6.7				
134+16	TO	134+24	NB	8	10	8.9				
134+50	TO	134+60	NB	10	10	11.2				
135+26	TO	135+50	SB	24	5	13.4			HALF-LANE CENTERLINE	
135+84	TO	135+94	NB	10	10	11.2				
136+80	TO	137+30	SB	50	5			27.8	HALF-LANE CENTERLINE	
136+96	TO	137+12	NB	16	10		17.8			
137+96	TO	138+04	NB	8	10	8.9				
138+06	TO	138+14	NB	8	10	8.9				
138+96	TO	139+02	NB	6	10	6.7				
139+12	TO	139+60	NB	48	5			26.7	HALF-LANE EDGELINE	
139+96	TO	140+02	NB	6	10	6.7				
140+42	TO	140+52	NB	10	10	11.2				
SUBTOTALS (2 OF 2)						187.5	98.5	81.2		
SUBTOTALS (1 OF 2)						214.3	76.8	152.4		
10% ANTICIPATED PATCHING						40.2	17.6	23.4		
TOTALS						442	193	257		

MODEL: Default
 FILE: \\blues-aw-beadefy.com\FIN\DOT\Documents\DOT_Offices\Director_E\Project\08765765\CADD\08765765\ch-schedule.dgn

USER NAME = Brandon.Humphreys	DESIGNED -	REVISED -
	DRAWN -	REVISED -
PLOT SCALE = 40,0000 */ in.	CHECKED -	REVISED -
PLOT DATE = 2/1/2023	DATE -	REVISED -

**STATE OF ILLINOIS
DEPARTMENT OF TRANSPORTATION**

SCHEDULE OF QUANTITIES

SCALE: NTS SHEET 1 OF 2 SHEETS STA. TO STA.

F.A.S. RTE.	SECTION	COUNTY	TOTAL SHEETS	SHEET NO.
788	25RS-2	CLINTON	8	6
			CONTRACT NO. 76R76	
ILLINOIS FED. AID PROJECT				

PAVEMENT MARKINGS SCHEDULE																	
STATION	TO	STATION	LENGTH	THERMOPLASTIC PAVEMENT MARKINGS					SHORT TERM PAVEMENT MARKING REMOVAL	SHORT TERM PAVEMENT MARKING	TEMPORARY PAVEMENT MARKINGS					PAVEMENT MARKING REMOVAL - WATER BLASTING	NOTES
				4 - INCH			24 - INCH	LETTERS &			4 - INCH			24 - INCH	LETTERS &		
				SOLID	SOLID	SKIP - DASH	SOLID	SYMBOLS			SOLID	SOLID	SKIP - DASH	SOLID	SYMBOLS		
				WHITE	YELLOW	YELLOW	WHITE	WHITE			WHITE	YELLOW	YELLOW	WHITE	WHITE		
FOOT	FOOT	FOOT	FOOT	FOOT	SQ FT	SQ FT	FOOT	FOOT	FOOT	FOOT	FOOT	SQ FT	SQ FT				
HUEY ROAD/COLLINS STREET/CH 4																	
100+75	TO	122+20	2145	3940		540			22	196	3940		540			1494	BEGIN RESURFACING
122+20	TO	125+50	330	548	330	90	20	62	4	32	548	330	90	20	62	350	
125+50	TO	125+82	32	64	64		10		1	4	64	64		10		46	
125+82	TO	125+90	8														RAILROAD OMISSION
125+90	TO	126+10	20	40	40		10		1	4	40	40		10		30	
126+10	TO	129+70	360	632	360	90	20	62	4	36	632	360	90	20	62	388	
129+70	TO	141+92	1222	2348		310			13	112	2348		310			886	END RESURFACING
SUBTOTALS				7572	794	1030	60	124	45	384	7572	794	1030	60	124	3194	
TOTALS				9396			60	124	45	384	9396			60	124	3194	

TEMPORARY RAMP SCHEDULE				
STATION	LENGTH	WIDTH	TEMPORARY RAMP	NOTES
	FOOT	FOOT	SQ YD	
HUEY ROAD/COLLINS STREET/CH 4				
100+75	5.0	20.0	12	BEGIN RESURFACING
112+50	1.5	40.0	7	JACKSON ST, NORTHBOUND
112+50	1.5	48.0	8	JACKSON ST, SOUTHBOUND
116+35	1.5	56.0	10	NORTH ST, NORTHBOUND
116+35	1.5	60.0	10	NORTH ST, SOUTHBOUND
120+35	1.5	54.0	9	CENTER ST, NORTHBOUND
120+35	1.5	54.0	9	CENTER ST, SOUTHBOUND
122+30	1.5	38.0	7	ALLEY
124+75	1.5	58.0	10	N RAILROAD ST, NORTHBOUND
124+75	1.5	54.0	9	N RAILROAD ST, SOUTHBOUND
125+70	5.0	20.0	12	BEGIN RAILROAD OMISSION
126+02	5.0	20.0	12	END RAILROAD OMISSION
128+15	1.5	66.0	11	S RAILROAD ST
130+40	1.5	43.0	8	LINCOLN ST
132+40	1.5	36.0	6	THOUVENIN ST
134+45	1.5	38.0	7	SHERMAN ST
142+66	5.0	20.0	12	END RESURFACING
TOTALS			159	

MODEL: Default
 FILE: \\mifs-pw-beadley.com\P\DOT\Documents\DOT_Offices\Dir\dir_8\Project\08768768\CAD\Drawings\08768768-ehb-schedule.dwg

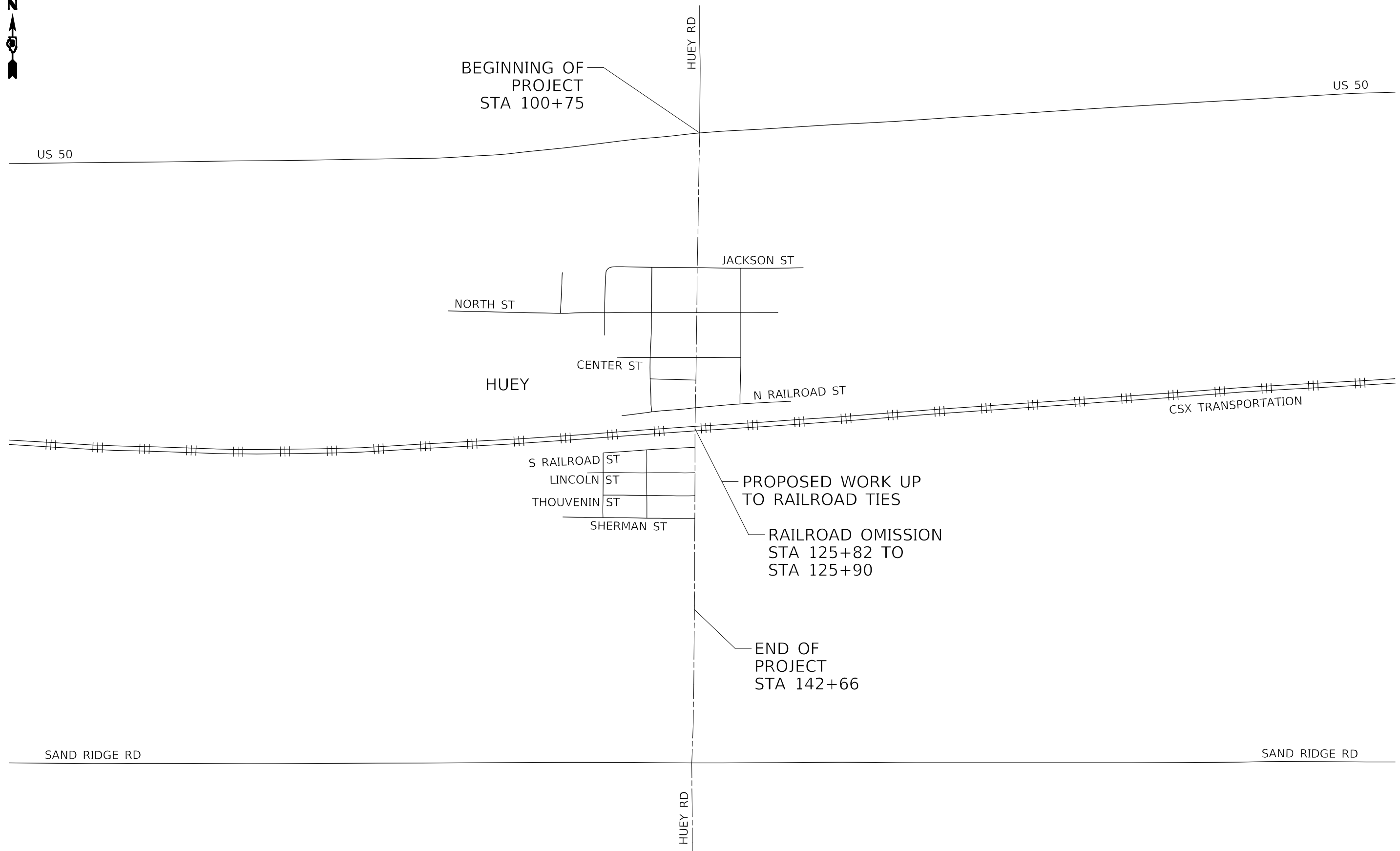
USER NAME = Brandon.Humphreys	DESIGNED -	REVISED -
	DRAWN -	REVISED -
PLOT SCALE = 40,0000 * / in.	CHECKED -	REVISED -
PLOT DATE = 2/1/2023	DATE -	REVISED -

STATE OF ILLINOIS
DEPARTMENT OF TRANSPORTATION

SCHEDULE OF QUANTITIES

SCALE: NTS SHEET 2 OF 2 SHEETS STA. TO STA.

F.A.S. RTE.	SECTION	COUNTY	TOTAL SHEETS	SHEET NO.
788	25R5-2	CLINTON	8	7
CONTRACT NO. 76R76				
ILLINOIS FED. AID PROJECT				



MODEL: Default
 FILE: \\mfrs-pw-bentley.com\PW\DOT\Documents\DOT Office\Dir\dir: 8\Project\08768768\CADD\Drawings\CAD\Sheet\08768768-8.dwg

USER NAME = Brandon.Humphreys	DESIGNED -	REVISED -
	DRAWN -	REVISED -
PLOT SCALE = 40,0000 * / in.	CHECKED -	REVISED -
PLOT DATE = 2/1/2023	DATE -	REVISED -

STATE OF ILLINOIS
DEPARTMENT OF TRANSPORTATION

LOCATION MAP SHEET			
SCALE: NTS	SHEET 1	OF 1 SHEETS	STA. TO STA.

F.A.S. RTE.	SECTION	COUNTY	TOTAL SHEETS	SHEET NO.
788	25RS-2	CLINTON	8	8
CONTRACT NO. 76R76				
ILLINOIS FED. AID PROJECT				