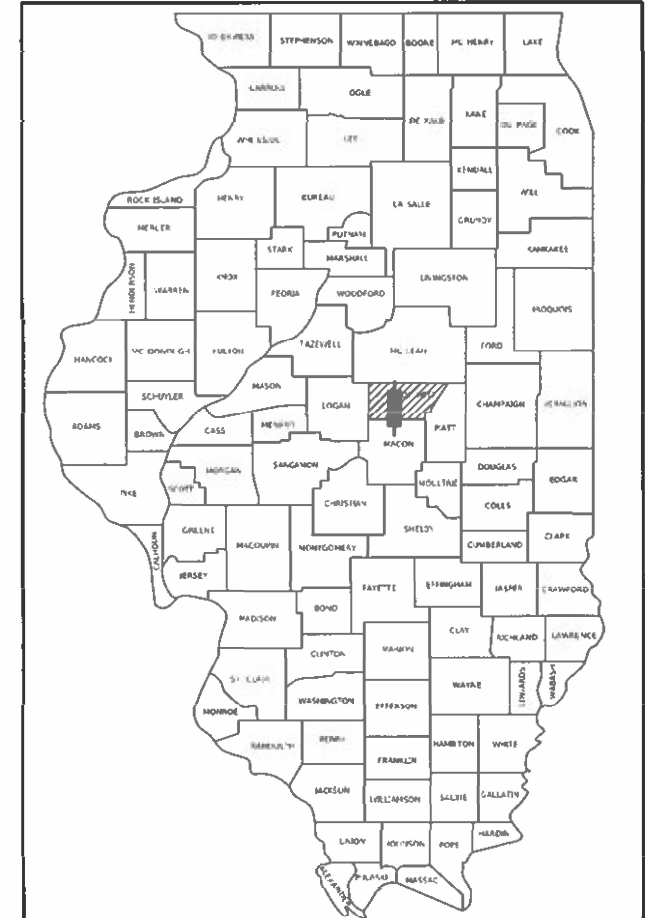


STATE OF ILLINOIS  
DEPARTMENT OF TRANSPORTATION

F.A.P. RTE.	SECTION	COUNTY	TOTAL SHEETS	SHEET NO.
322	CM2023-5010	DEWITT	14	1
		ILLINOIS	CONTRACT NO. 70G21	

D-95-018-23



LOCATION OF SECTION INDICATED THUS: - [shaded box] -

FOR INDEX OF SHEETS, SEE SHEET NO. 2  
FOR SUMMARY OF QUANTITIES, SEE SHEET NO. 3

TRAFFIC DATA

FAP RTE. 322 / (US 51)						
	LEG "A"	LEG "B"	LEG "C"	LEG "D"	LEG "E"	LEG "F"
2023 ADT =	9,050	9,650	9,350	6,800	7,650	6,800
PV % =	83.10%	87.20%	88.20%	84.50%	84.30%	82.00%
SU % =	4.70%	2.80%	2.70%	3.70%	4.60%	5.10%
MU % =	12.20%	10.00%	9.10%	11.80%	11.10%	12.90%

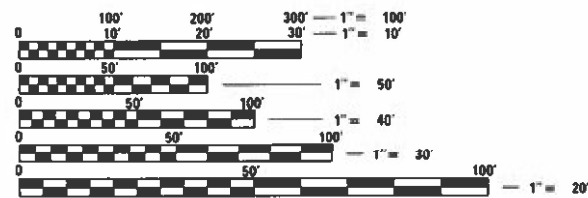
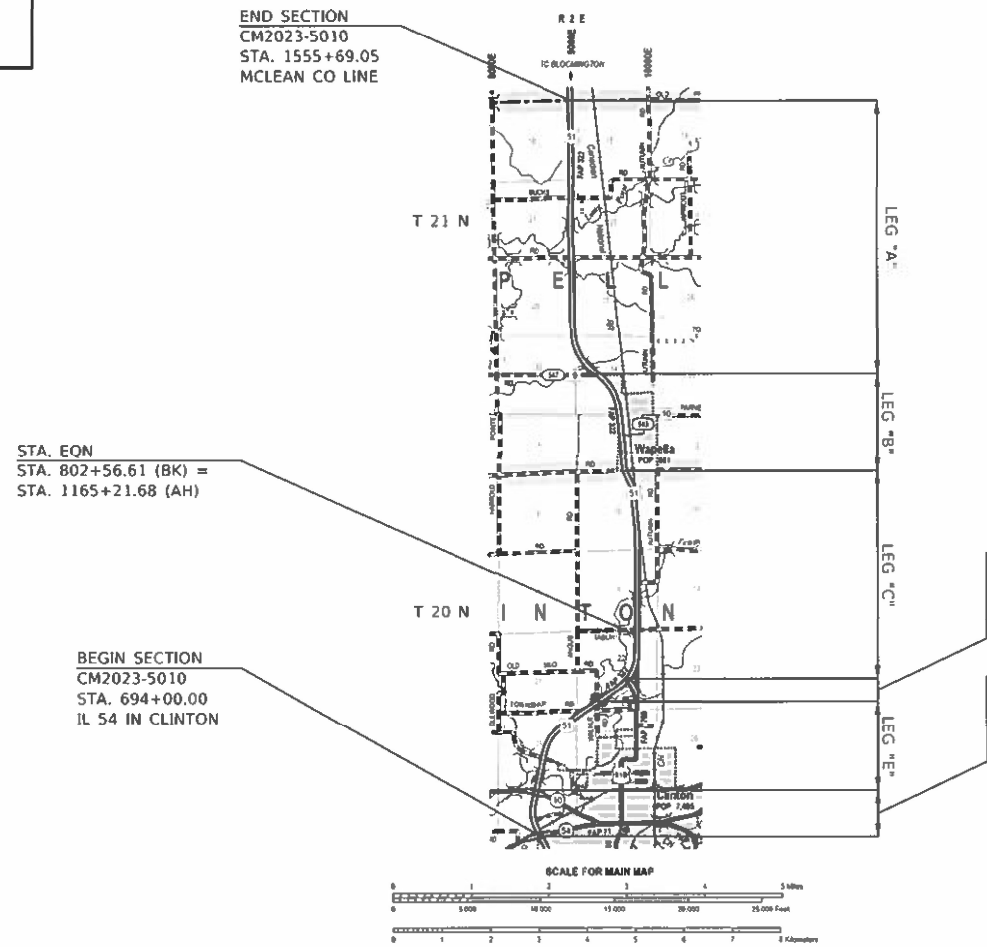
**TRAFFIC DATA LOCATIONS**  
 LEG "A" = MCLEAN COUNTY LINE TO FAS 547A (WAYNESVILLE RD)  
 LEG "B" = FAS 547A (WAYNESVILLE RD) TO THORPES RD IN WAPELLA  
 LEG "C" = THORPES RD IN WAPELLA TO US 51B  
 LEG "D" = US 51B TO TR 108 (WALNUT RD)  
 LEG "E" = TR 108 (WALNUT RD) TO IL 10  
 LEG "F" = IL 10 TO IL 54 (VAN BUREN ST)

**FUNCTIONAL CLASSIFICATION**  
 FREEWAY / EXPRESSWAY

PROPOSED  
HIGHWAY PLANS

FAP ROUTE 322 (US 51)  
SECTION CM2023-5010  
PATCHING  
DEWITT COUNTY

C-95-030-23  
US 51 FROM IL 54 IN CLINTON TO MCLEAN CO LINE



FULL SIZE PLANS HAVE BEEN PREPARED USING STANDARD ENGINEERING SCALES. REDUCED SIZED PLANS WILL NOT CONFORM TO STANDARD SCALES. IN MAKING MEASUREMENTS ON REDUCED PLANS, THE ABOVE SCALES MAY BE USED.

J.U.L.I.E.  
JOINT UTILITY LOCATION INFORMATION FOR EXCAVATORS  
1-800-892-0123  
OR 811  
TOWNSHIPS  
RANDOLPH

PROJECT ENGINEER: RYAN T. CARROLL  
SQUAD LEADER: TYLER J. PIERSON  
DESIGNER: AARON FARNHAM  
CONTRACT NO. 70G21

GROSS LENGTH = 49,903.98 FT. = 9.452 MILE  
NET LENGTH = 49,903.98 FT. = 9.452 MILE

STATE OF ILLINOIS  
DEPARTMENT OF TRANSPORTATION

SUBMITTED 1/26 2023  
Kensil A. Barnett  
REGIONAL ENGINEER

March 24, 2023  
John A. Etk  
ENGINEER OF DESIGN AND ENVIRONMENT

March 24, 2023  
Stephen M. Lewis  
DIRECTOR OF HIGHWAYS PROJECT IMPLEMENTATION

PRINTED BY THE AUTHORITY  
OF THE STATE OF ILLINOIS

## INDEX OF SHEETS

<u>DESCRIPTION</u>	<u>SHEET NO.</u>
COVER	1
INDEX OF SHEETS, LIST OF HIGHWAY STANDARDS, & COMMITMENTS	2
SUMMARY OF QUANTITIES	3
SCHEDULE OF QUANTITIES	4
TYPICAL CROSS-SECTIONS	5 to 12
CLASS A PATCHING (SPECIAL)	13 to 14

## LIST OF STANDARDS

<u>STANDARD NO.</u>	<u>DESCRIPTION</u>
000001-08	STANDARD SYMBOLS, ABBREVIATIONS AND PATTERNS
001001-02	AREAS OF REINFORCEMENT BARS
001006	DECIMAL OF AN INCH AND OF A FOOT
420001-10	PAVEMENT JOINTS
701101-05	OFF-ROAD OPERATIONS, MULTILANE, 15' (4.5 M) TO 24" (600 MM) FROM PAVEMENT
701106-02	OFF-ROAD OPERATIONS, MULTILANE, MORE THAN 15' (4.5 M) AWAY
701400-11	APPROACH TO LANE CLOSURE, FREEWAY/EXPRESSWAY
701401-13	LANE CLOSURE, FREEWAY/EXPRESSWAY
701411-09	LANE CLOSURE, MULTILANE, AT ENTRANCE OR EXIT RAMP, FOR SPEEDS > 45 MPH
701422-10	LANE CLOSURE, MULTILANE, FOR SPEEDS > 45 MPH TO 55 MPH
701426-09	LANE CLOSURE, MULTILANE, INTERMITTENT OR MOVING OPERATION, FOR SPEEDS > 45 MPH
701701-10	URBAN LANE CLOSURE, MULTILANE INTERSECTION
701901-08	TRAFFIC CONTROL DEVICES

## GENERAL NOTES

**G.N.-100A**  
ELECTRONIC FILES AND/OR ELECTRONIC SURVEY INFORMATION INCLUDING CADD FILES WILL NOT BE AVAILABLE TO THE CONTRACTOR.

**G.N.-440B**  
THE EXISTING TIE BARS BETWEEN THE EXISTING PAVEMENT AND EXISTING MEDIANS, GUTTERS AND/OR COMBINATION CURB AND GUTTERS THAT ARE FOUND SUITABLE FOR REUSE SHALL BE CLEANED, STRAIGHTENED AND INCORPORATED INTO THE NEW CONSTRUCTION. ANY EXISTING TIE BARS THAT ARE FOUND UNSUITABLE TO BE INCORPORATED INTO THE PROPOSED CONSTRUCTION DUE TO EXCESSIVE RUSTING OR DISTRESS SHALL BE REMOVED FLUSH WITH THE FACE OF THE EXISTING CONCRETE AND DISPOSED OF OUTSIDE THE LIMITS OF THE RIGHT-OF-WAY IN ACCORDANCE WITH ARTICLE 202.03 OF THE STANDARD SPECIFICATIONS.

THIS WORK WILL NOT BE PAID FOR SEPARATELY BUT SHALL BE CONSIDERED INCLUDED IN THE VARIOUS REMOVAL PAY ITEMS AND NO ADDITIONAL COMPENSATION WILL BE ALLOWED.

**G.N.-780 (SPL)**  
PAVEMENT MARKING FOR THIS PROJECT IS TO BE PERFORMED BY OTHERS, FIELD PERSONNEL SHALL NOTIFY GARY SIMS, DISTRICT 5 TRAFFIC OPERATIONS ENGINEER AT (217) 465-4181 WHEN THE PROJECT IS COMPLETE AND READY FOR PAVEMENT MARKINGS.

## COMMITMENTS

THERE ARE NO COMMITMENTS FOR THIS CONTRACT

**STATE OF ILLINOIS  
DEPARTMENT OF TRANSPORTATION**

**INDEX OF SHEETS, LIST OF STANDARDS,  
GENERAL NOTES, & COMMITMENTS**

F.A.P. RTE.	SECTION	COUNTY	TOTAL SHEETS	SHEET NO.
322	CM2023-5010	DEWITT	14	2
CONTRACT NO. 70G21				
		ILLINOIS	FED. AID PROJECT	

SCALE: SHEET 1 OF 1 SHEETS STA. TO STA.

# SUMMARY OF QUANTITIES

LOCATION OF WORK:	FAP 322 (US 51) FREEWAY / EXPRESSWAY RURAL STA. 694+00.00 STA. 1555+69.05 DEWITT
FUNDING BREAKOUT:	100% STATE
CONSTRUCTION TYPE CODE:	0006

CODE NO.	ITEM	UNIT	TOTAL QUANTITY
44213000	PATCHING REINFORCEMENT	SQ YD	461.00
44213200	SAW CUTS	FOOT	1,478.00
44213204	TIE BARS 3/4"	EACH	560.00
67100100	MOBILIZATION	L SUM	1.00
70100320	TRAFFIC CONTROL AND PROTECTION, STANDARD 701422	L SUM	1.00
70100800	TRAFFIC CONTROL AND PROTECTION, STANDARD 701401	L SUM	1.00
70102635	TRAFFIC CONTROL AND PROTECTION, STANDARD 701701	L SUM	1.00
70107025	CHANGEABLE MESSAGE SIGN	CAL DA	6.00
X4420543	CLASS A PATCHES, TYPE I, 9 INCH (SPECIAL)	SQ YD	8.00
X4420545	CLASS A PATCHES, TYPE II, 9 INCH (SPECIAL)	SQ YD	94.00
X4420547	CLASS A PATCHES, TYPE III, 9 INCH (SPECIAL)	SQ YD	99.00
X4420549	CLASS A PATCHES, TYPE IV, 9 INCH (SPECIAL)	SQ YD	260.00
Z0013798	CONSTRUCTION LAYOUT	L SUM	1.00
* DENOTES SPECIALTY ITEM			

MODEL: I:\MODEL\MHFE  
FILE: MHFE.dwg  
PLOT DATE: 1/25/2023

USER NAME = Braclay,Fernam	DESIGNED -	REVISED -
	DRAWN -	REVISED -
PLOT SCALE = 40,0000 * / in.	CHECKED -	REVISED -
PLOT DATE = 1/25/2023	DATE -	REVISED -

**STATE OF ILLINOIS  
DEPARTMENT OF TRANSPORTATION**

**SUMMARY OF QUANTITIES**

SCALE: SHEET 1 OF 1 SHEETS STA. TO STA.

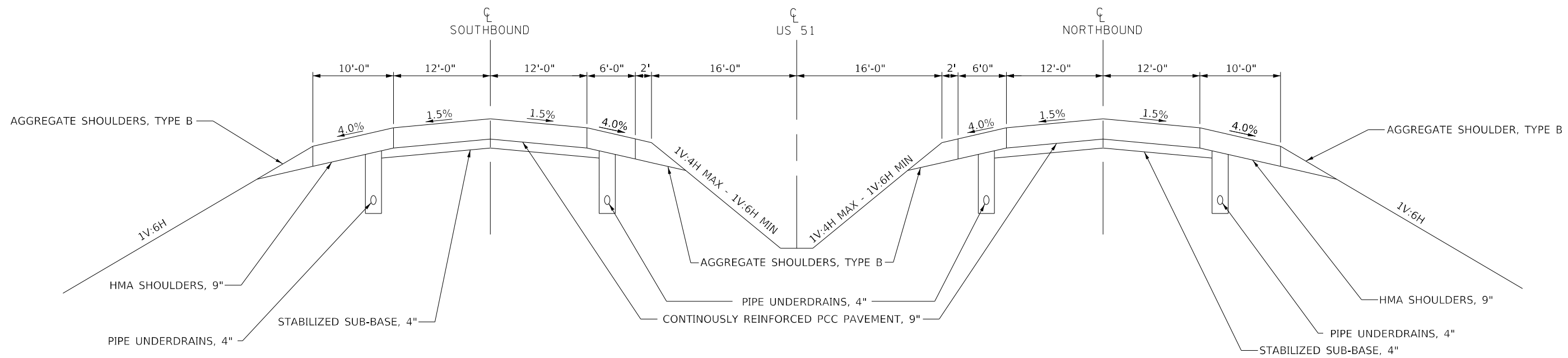
F.A.P. RTE.	SECTION	COUNTY	TOTAL SHEETS	SHEET NO.
322	CM2023-5010	DEWITT	14	3
			CONTRACT NO. 70G21	
			ILLINOIS FED. AID PROJECT	



# EXISTING TYPICAL CROSS SECTION ①

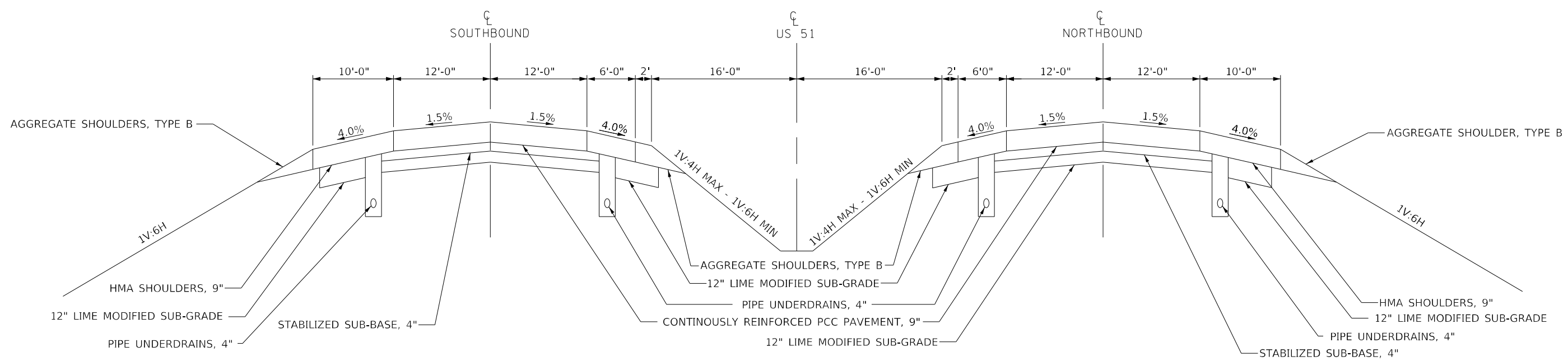
STATION EQUATION  
802+56.61 BK = 1165+21.68 AH

STATION TO STATION  
694+00.00 TO 1235+20.00 ②



# EXISTING TYPICAL CROSS SECTION ②

STATION TO STATION  
① 1235+20.00 TO 1244+62.56 ③  
③ 1251+32.18 TO 1273+73.85 ③



MODEL: I:\MODEL\MAME FILE: NAME: P:\SUBC\PA\bea\p\DOT\Documents\DOT\Office\Dir\Dir: S:\Project\057021\CAD\DATA\CAD\Sheet\057021\1st\typ\scale

USER NAME = Braclay,Fernam	DESIGNED -	REVISED -
	DRAWN -	REVISED -
PLOT SCALE = 40,0000 * / in.	CHECKED -	REVISED -
PLOT DATE = 1/25/2023	DATE -	REVISED -

**STATE OF ILLINOIS  
DEPARTMENT OF TRANSPORTATION**

**FAP 322 (US 51) TYPICAL CROSS-SECTIONS**

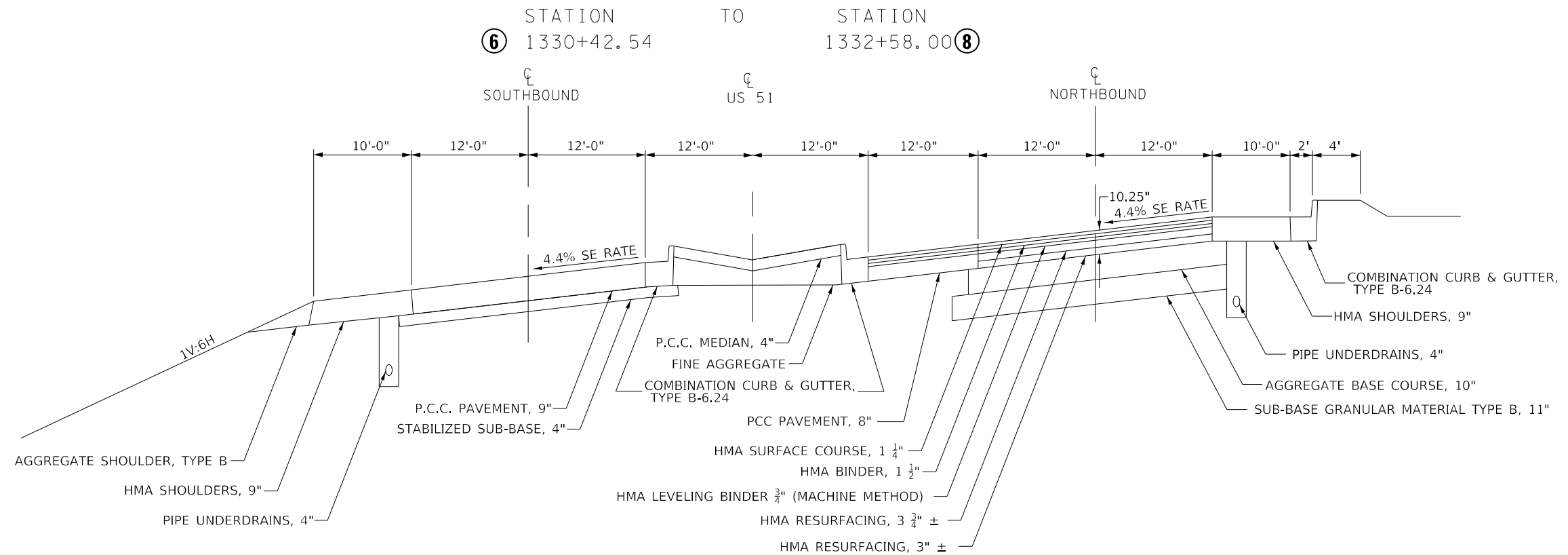
SCALE: N.T.S. SHEET 1 OF 8 SHEETS STA. TO STA.

F.A.P. RTE. 322	SECTION CM2023-5010	COUNTY DEWITT	TOTAL SHEETS 14	SHEET NO. 5
ILLINOIS FED. AID PROJECT			CONTRACT NO. 70G21	

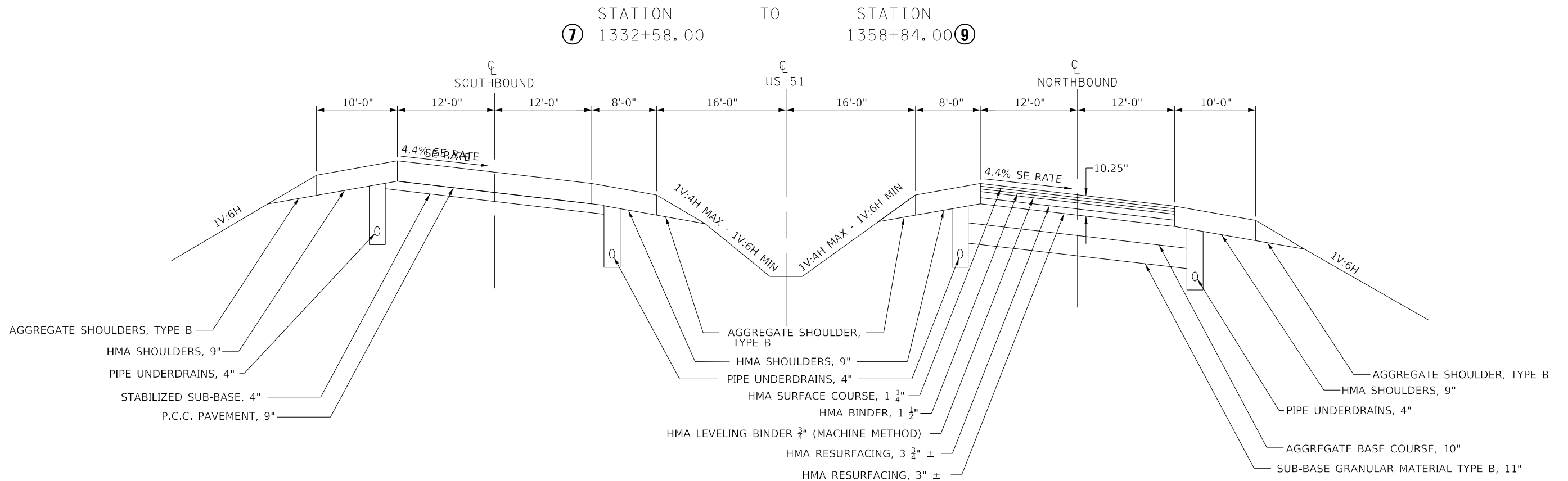




# EXISTING TYPICAL CROSS SECTION 7



# EXISTING TYPICAL CROSS SECTION 8



MODEL: \\MODELNAME  
FILE: \\FILEPATH  
PROJECT: \\PROJECTNAME  
DRAWING: \\DRAWINGNAME  
DATE: 1/25/2023

USER NAME = Braclay,Fernan	DESIGNED -	REVISED -
	DRAWN -	REVISED -
PLOT SCALE = 40,0000 * / in.	CHECKED -	REVISED -
PLOT DATE = 1/25/2023	DATE -	REVISED -

**STATE OF ILLINOIS  
DEPARTMENT OF TRANSPORTATION**

<b>FAP 322 (US 51) TYPICAL CROSS-SECTIONS</b>			
SCALE: N.T.S.	SHEET 4 OF 8 SHEETS	STA.	TO STA.

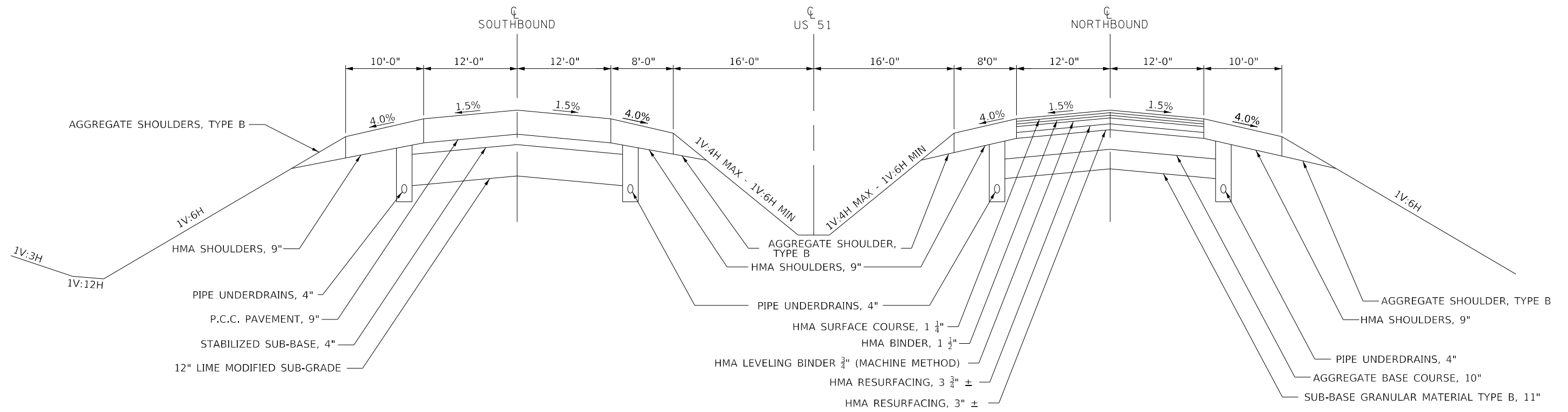
F.A.P. RTE. 322	SECTION CM2023-5010	COUNTY DEWITT	TOTAL SHEETS 14	SHEET NO. 8
ILLINOIS FED. AID PROJECT			CONTRACT NO. 70G21	





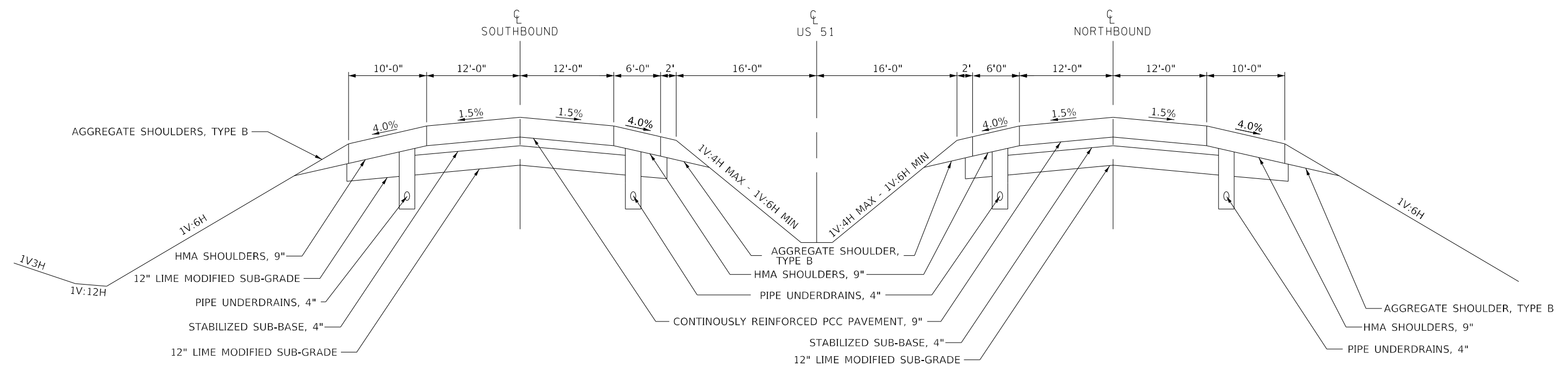
# EXISTING TYPICAL CROSS SECTION 11

STATION TO STATION  
 ⑩ 1396+78.60 TO 1436+17.00 ⑫



# EXISTING TYPICAL CROSS SECTION 12

STATION TO STATION  
 ⑪ 1436+17.00 TO 1462+30.49 ⑬  
 ⑬ 1471+19.86 TO 1521+00.00 ⑭  
 ⑭ 1538+00.00 TO 1551+99.23 ⑮



MODEL: I:\MODEL\MAME  
 FILE: NAME: 322\Subsections\beadby.com\PROJECTS\DOT\Office\Drawings\Project\057021\CAD\DATA\CAD\Sheet\057021-12-tyr.kpl  
 SCALE: 1/25/2023

USER NAME = Braclay,Fernan	DESIGNED -	REVISED -
	DRAWN -	REVISED -
PLOT SCALE = 40,0000 * / in.	CHECKED -	REVISED -
PLOT DATE = 1/25/2023	DATE -	REVISED -

**STATE OF ILLINOIS**  
**DEPARTMENT OF TRANSPORTATION**

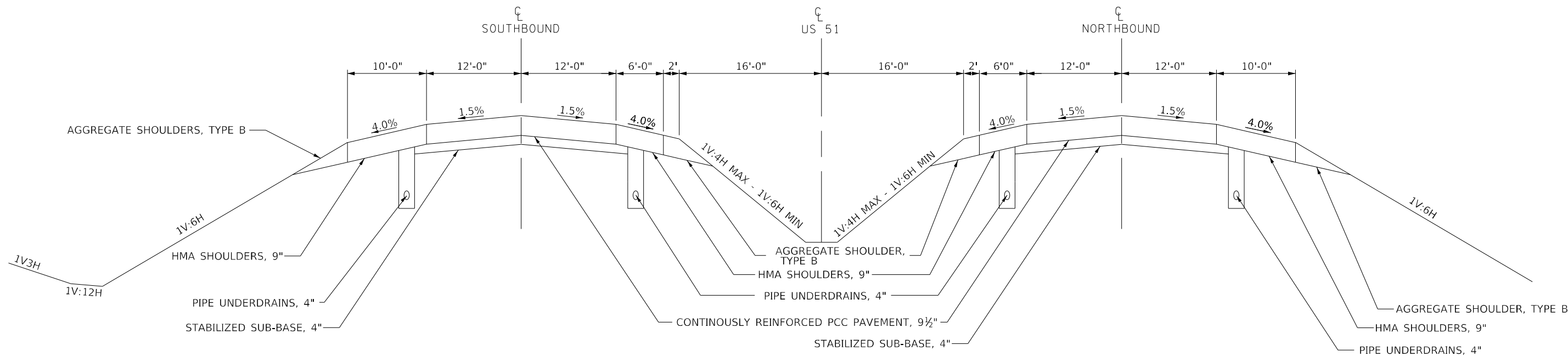
**FAP 322 (US 51) TYPICAL CROSS-SECTIONS**  
 SCALE: N.T.S. SHEET 6 OF 8 SHEETS STA. TO STA.

F.A.P. RTE. 322	SECTION CM2023-5010	COUNTY DEWITT	TOTAL SHEETS 14	SHEET NO. 10
CONTRACT NO. 70G21				
ILLINOIS FED. AID PROJECT				



# EXISTING TYPICAL CROSS SECTION 15

STATION 12 TO STATION 15  
 1551+99.23 TO 1555+69.05



MODEL: \\MODEL\MAME  
 FILE: \\MAILS\_P\public\paw\_bentley.com\FW\DOT\Documents\DOT\_office\Dir\dir: S\Project\0570621\CAD\DATA\CAD\Sheet\0570621-15-typical.dwg

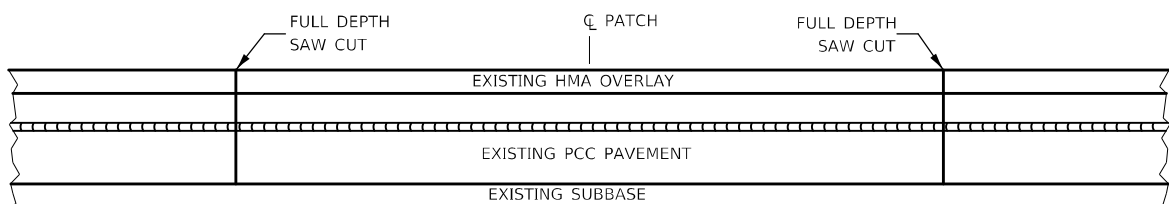
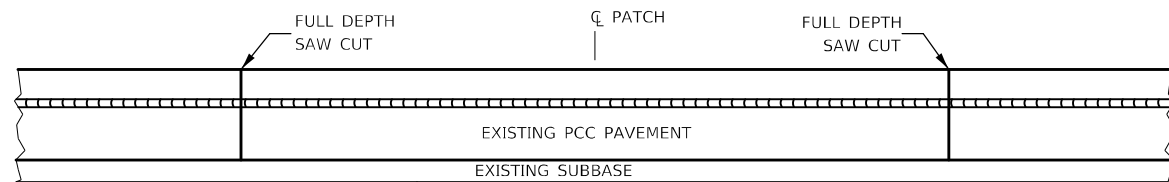
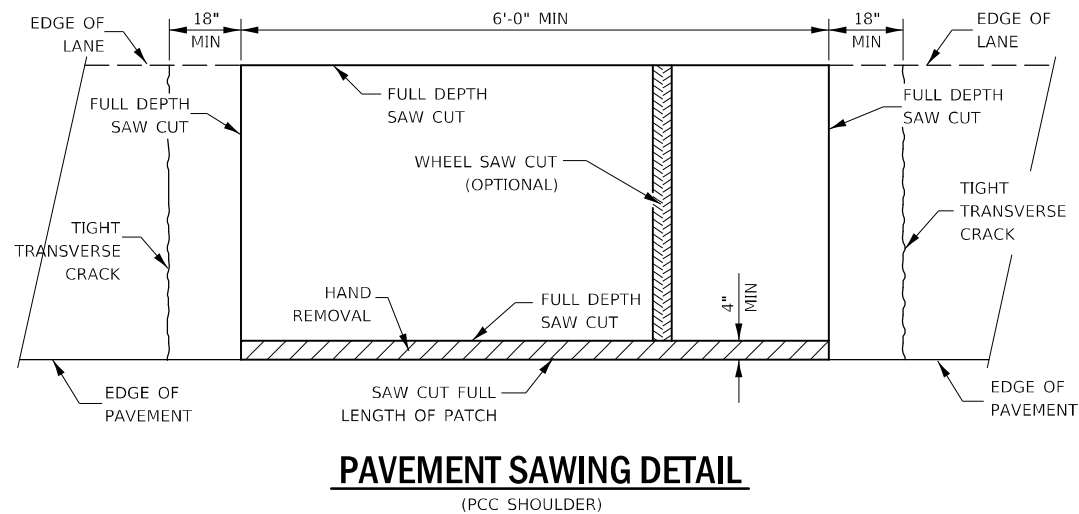
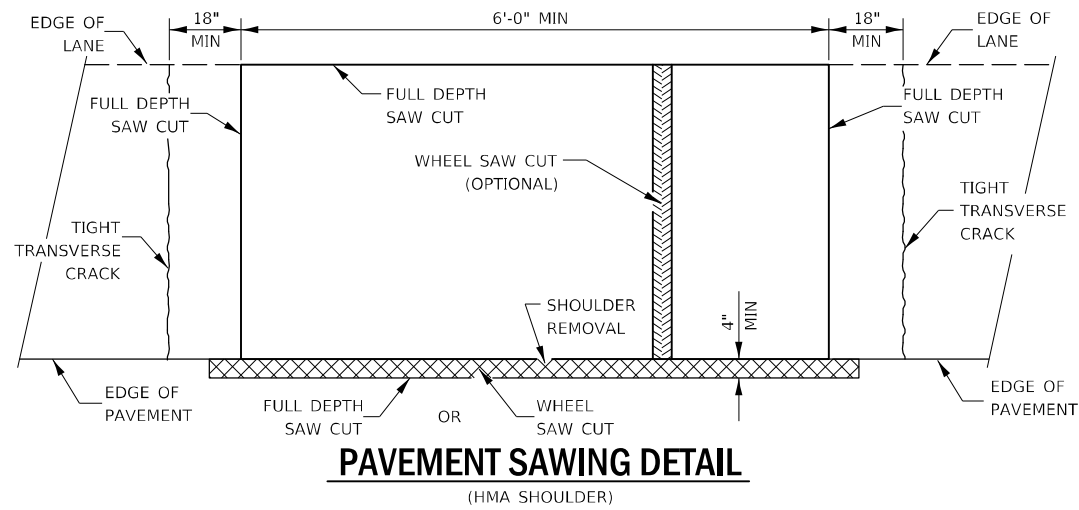
USER NAME = Braclley,Fernam	DESIGNED -	REVISED -
	DRAWN -	REVISED -
PLOT SCALE = 40,0000 * / in.	CHECKED -	REVISED -
PLOT DATE = 1/25/2023	DATE -	REVISED -

**STATE OF ILLINOIS  
 DEPARTMENT OF TRANSPORTATION**

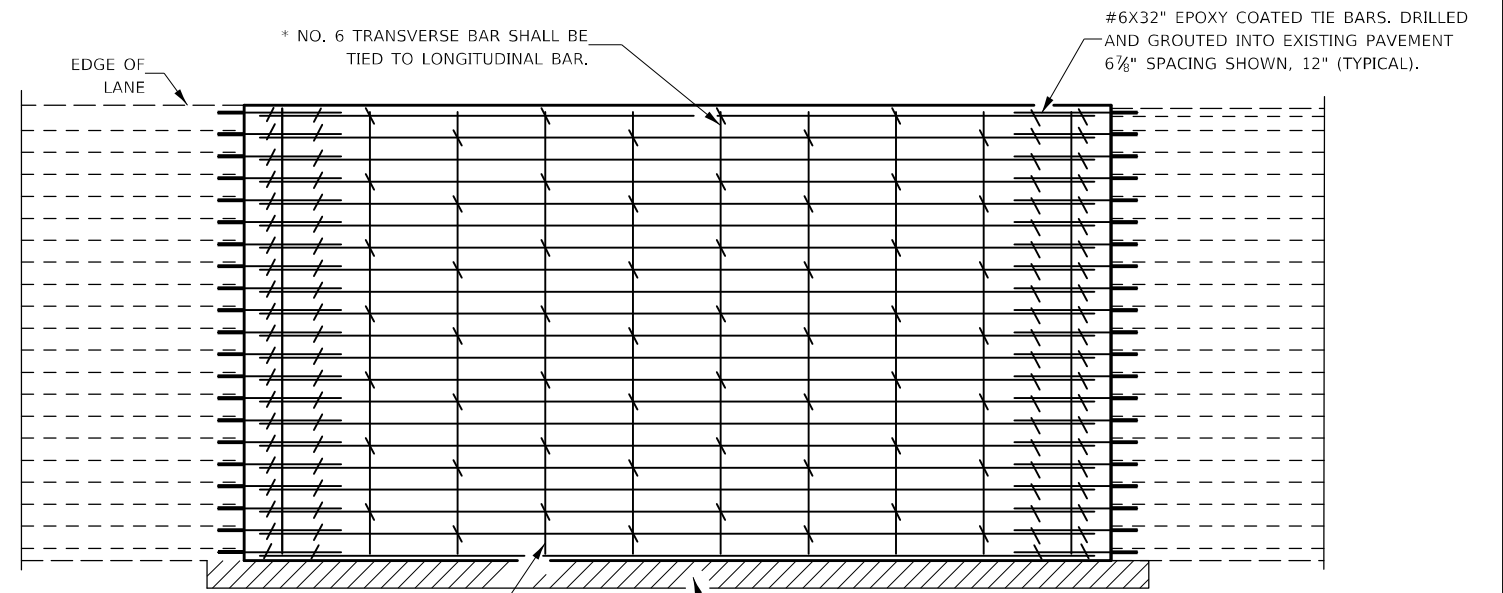
**FAP 322 (US 51) TYPICAL CROSS-SECTIONS**

SCALE: N.T.S. SHEET 8 OF 8 SHEETS STA. TO STA.

F.A.P. RTE.	SECTION	COUNTY	TOTAL SHEETS	SHEET NO.
322	CM2023-5010	DEWITT	14	12
CONTRACT NO. 70G21				
ILLINOIS FED. AID PROJECT				

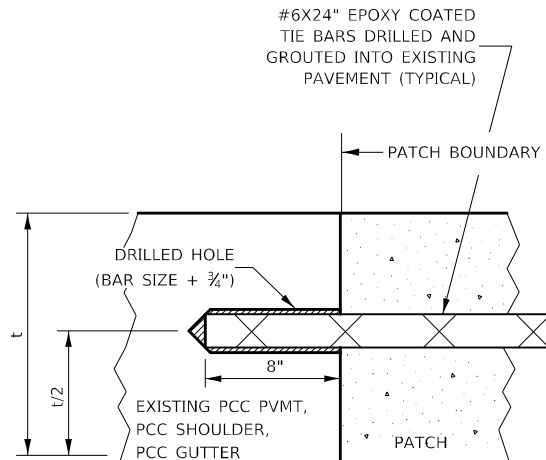


**PAVEMENT SAWING DETAIL FOR CLASS A PATCHING (CRC PAVEMENT)**



TRANSVERSE REBAR SHALL EXTEND TO OUTER LONGITUDINAL REBAR WHILE PROVIDING A MINIMUM 3" CLEARANCE FROM EXISTING PAVEMENT EDGE

**PAVEMENT REINFORCEMENT DETAIL**



**LONGITUDINAL CONSTRUCTION JOINT**

PATCHES MORE THAN 20' IN LENGTH SHALL BE TIED TO ADJACENT PAVEMENT, PCC SHOULDERS OR PCC CURB AND GUTTER WITH #6X24" EPOXY COATED TIE BARS AT 36" CENTERS.

**NOTES:**

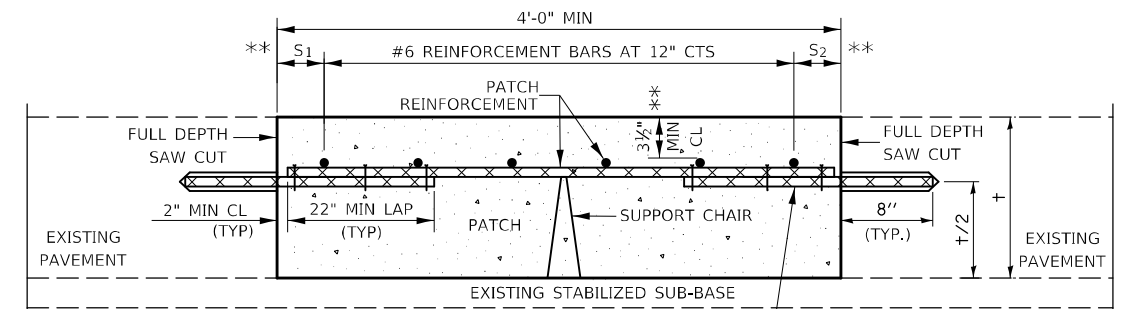
EXISTING TRANSVERSE REINFORCEMENT SPACING;  $\pm 6\frac{7}{8}$ ".

SPACING OF NEW TRANSVERSE AND LONGITUDINAL REINFORCEMENT SHALL MATCH SPACING OF EXISTING REINFORCEMENT. SPACING OF NEW TRANSVERSE TIE BARS SHALL BE SPACED AT 12" CENTERS. TIE BARS AND REINFORCEMENT SHALL BE TIED TOGETHER WITH A MINIMUM OF TWO TIES PER BAR, WHEN ALIGNED.

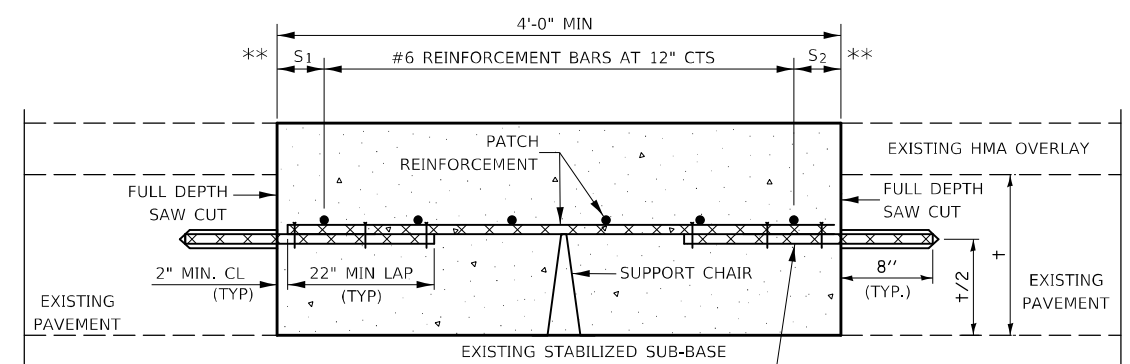
SUPPORT CHAIRS SHALL BE REQUIRED WHENEVER PATCH LENGTH EXCEEDS 6'-0"

\* EVERY THIRD INTERSECTION MUST BE TIED. WHEN THE MINIMUM CLEARANCE CANNOT BE OBTAINED WITH THE TRANSVERSE REBAR ON TOP, THEN THE TRANSVERSE REBAR SHALL BE TIED TO THE BOTTOM OF THE LONGITUDINAL REBAR.

\*\* VARIABLES WHERE S<sub>1</sub> AND S<sub>2</sub> ARE 2 1/2" MIN. AND 12" MAX.



**WITHOUT HMA OVERLAY**



**WITH HMA OVERLAY**

**PATCHING DETAIL FOR CLASS A PATCHING (CRC PAVEMENT)**

MODEL: I:\MODEL\MAIF5  
FILE: MAIF5\_PAVESUBCLASSA.PDF  
PROJECT: I:\DOT\Documents\DOT Office\Projects\511\Project\5110221\CD\Drawings\Special\5110221.dgn  
DATE: 1/25/2023

USER NAME = Braclley,Fernnam	DESIGNED -	REVISED -
PLOT SCALE = 100,0000' / in.	DRAWN -	REVISED -
PLOT DATE = 1/25/2023	CHECKED -	REVISED -
	DATE -	REVISED -

**STATE OF ILLINOIS  
DEPARTMENT OF TRANSPORTATION**

**CLASS A PATCHING (SPECIAL)**

SCALE: N.T.S. SHEET 1 OF 2 SHEETS STA. TO STA.

F.A.P. RTE.	SECTION	COUNTY	TOTAL SHEETS	SHEET NO.
322	CM2023-5010	DEWITT	14	13
CONTRACT NO. 70G21			ILLINOIS FED. AID PROJECT	

