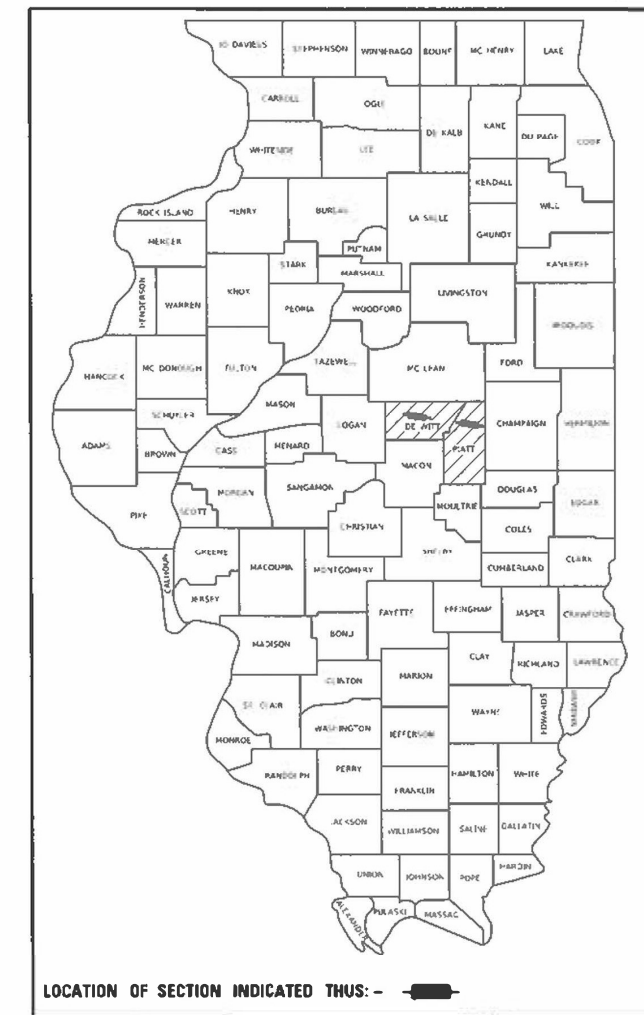


STATE OF ILLINOIS
DEPARTMENT OF TRANSPORTATION

SECTION	COUNTY	TOTAL SHEETS	SHEET NO.
7d	D5 CM PATCH 2023-1	3*	1
ILLINOIS		CONTRACT NO. 70G19	

* DEWITT & PIATT
3 + 7 = 10 TOTAL SHEETS

D-95-020-23



PROPOSED HIGHWAY PLANS

F.A.I. ROUTE 74 (I-74)
SECTION D5 CM PATCH 2023-1
PROJECT
PATCHING
DEWITT & PIATT COUNTIES

C-95-033-23

FOR INDEX OF SHEETS, SEE SHEET NO. 2
FOR SUMMARY OF QUANTITIES, SEE SHEET NO. 3

TRAFFIC DATA

F.A.I. 74

	LEG "A"	LEG "B"	LEG "C"
2023 ADT =	21,900	22,900	23,400
P.U. %	64.2	66.5	67.1
S.U. %	3.4	3.4	5.1
M.U. %	32.4	30.1	27.8

TRAFFIC DATA LOCATIONS

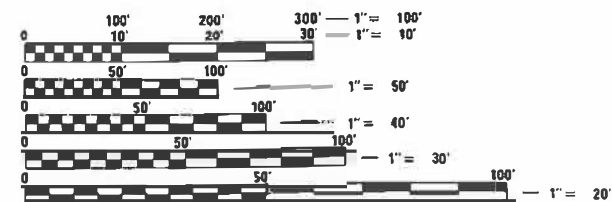
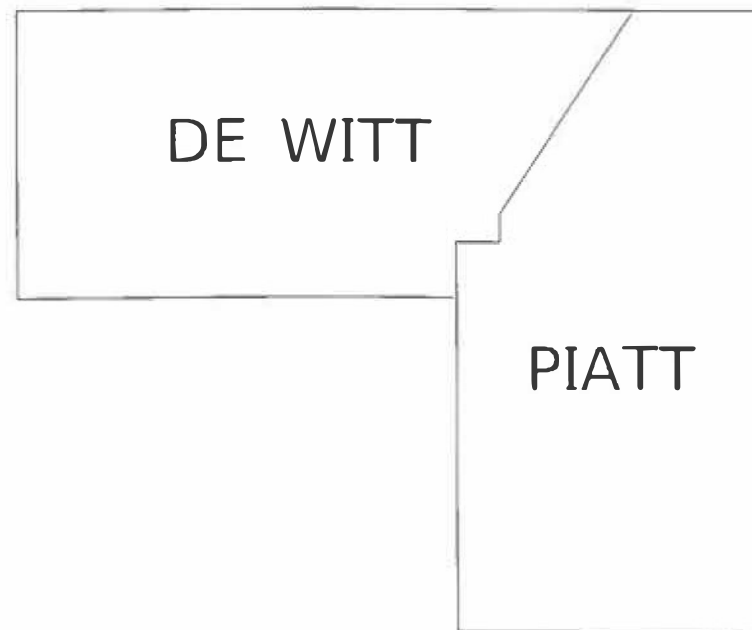
LEG "A" is I-74 from McLean Co line to IL 54 in Farmer City
LEG "B" is I-74 from IL 54 in Farmer City to FAS 495 in Mansfield
LEG "C" is I-74 from FAS 495 in Mansfield to Champaign Co line

FUNCTIONAL CLASSIFICATION

INTERSTATE

TOWNSHIP

SANTA ANNA & BLUE RIDGE



FULL SIZE PLANS HAVE BEEN PREPARED USING STANDARD ENGINEERING SCALES. REDUCED SIZED PLANS WILL NOT CONFORM TO STANDARD SCALES. IN MAKING MEASUREMENTS ON REDUCED PLANS, THE ABOVE SCALES MAY BE USED.

J.U.L.I.E.
JOINT UTILITY LOCATION INFORMATION FOR EXCAVATORS
1-800-892-0123
OR 811

PROJECT ENGINEER: JASON W. STULTS
DESIGNER: JEANNIE BLAND
PHONE: (217)465-4181

CONTRACT NO. 70G19

STATE OF ILLINOIS
DEPARTMENT OF TRANSPORTATION

SUBMITTED 1/31 20 23
Kenneth A. Barnett SWR
REGIONAL ENGINEER

March 24, 2023 [Signature]
ENGINEER OF DESIGN AND ENVIRONMENT

March 24, 2023 [Signature]
DIRECTOR OF HIGHWAYS PROJECT IMPLEMENTATION

PRINTED BY THE AUTHORITY
OF THE STATE OF ILLINOIS

INDEX OF SHEETS

<u>SHEET NO.</u>	<u>DESCRIPTION</u>
1	COVER SHEET
2	INDEX OF SHEETS
2	HIGHWAY STANDARDS
2	GENERAL NOTES
2	COMMITMENTS
3	LOCATION MAPS
4 - 5	SUMMARY OF QUANTITIES
6	TYPICAL CROSS SECTIONS
7 - 8	SCHEDULE OF QUANTITIES
9 -10	DETAIL FOR CLASS A PATCHING (SPL)

GENERAL NOTES

G.N.-100A
ELECTRONIC FILES AND/OR ELECTRONIC SURVEY INFORMATION INCLUDING CADD FILES WILL NOT BE AVAILABLE TO THE CONTRACTOR.

G.N.-780 SPL
PAVEMENT MARKINGS FOR THIS PROJECT IS TO BE PERFORMED BY OTHERS, FIELD PERSONNEL WILL NOTIFY GARY SIMS, DISTRICT 5 TRAFFIC OPERATIONS ENGINEER AT (217) 465-4181 WHEN THE PROJECT IS COMPLETE AND READY FOR PAVEMENT MARKINGS

LIST OF STANDARDS

<u>STANDARD NO.</u>	<u>DESCRIPTION</u>
000001-08	STANDARDS SYMBOLS, ABBREVIATIONS, & PATTERNS
001006	DECIMAL OF AN INCH AND OF A FOOT
701400-11	APPROACH LANE TO CLOSURE
701401-13	LANE CLOSURE, FREEWAY/EXPRESSWAY
701411-09	LANE CLOSURE, MULTILANE, AT ENTRANCE OR EXIT RAMP > 45 MPH
701426-09	LANE CLOSURE, MULTILANE, INTERMITTENT OR MOVING OPER., FOR SPEEDS > 45 MPH
701428-01	TRAFFIC CONTROL SETUP AND REMOVAL FREEWAY/EXPRESSWAY
701901-08	TRAFFIC CONTROL DEVICES

COMMITMENTS

THERE ARE NO COMMITMENTS FOR THIS PROJECT

MODEL: I:\MODEL\NAME
 FILE: NAME: I:\Public\paw_bendley.com\FW\DOT\Documents\DOT_Offices\Dir\dr: S:\Project\0570G19\CADD\DATA\CAD\Sheets\0570G19-sh-CenNotes.dgn

USER NAME = Bridgette.Pierson	DESIGNED -	REVISED -
	DRAWN -	REVISED -
PLOT SCALE = 40,0000 */ in.	CHECKED -	REVISED -
PLOT DATE = 2/1/2023	DATE -	REVISED -

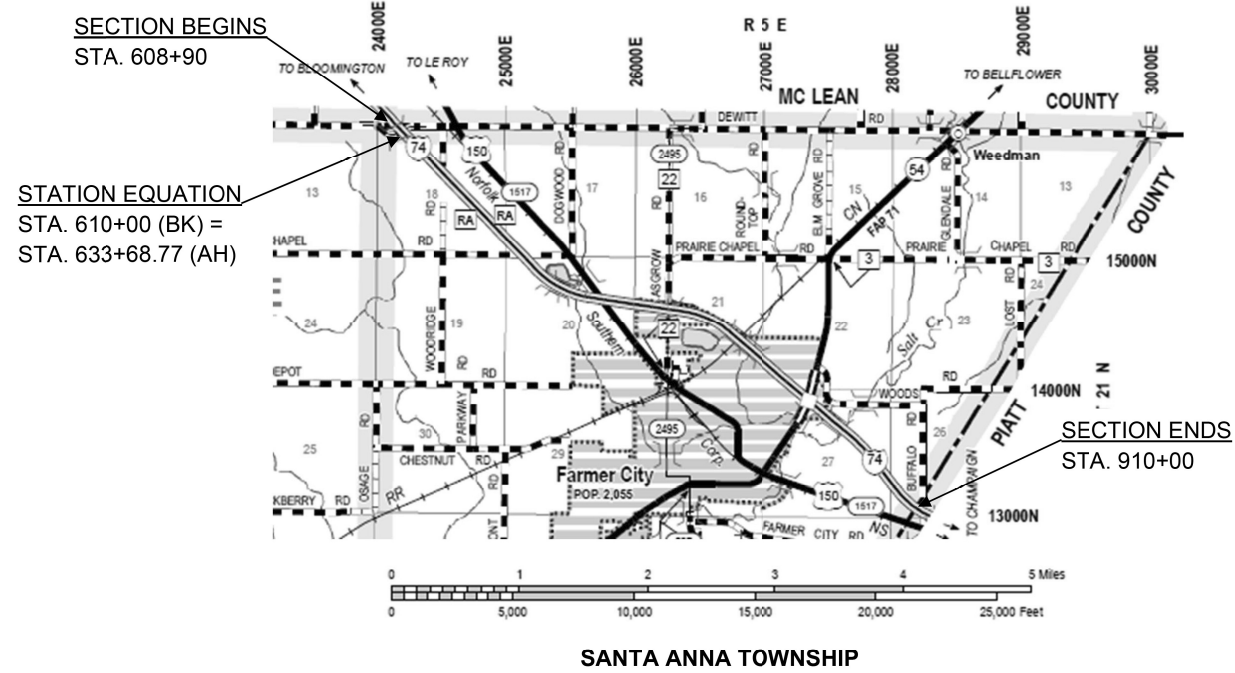
**STATE OF ILLINOIS
DEPARTMENT OF TRANSPORTATION**

**INDEX OF SHEETS, LIST OF STANDARDS
& GENERAL NOTES**

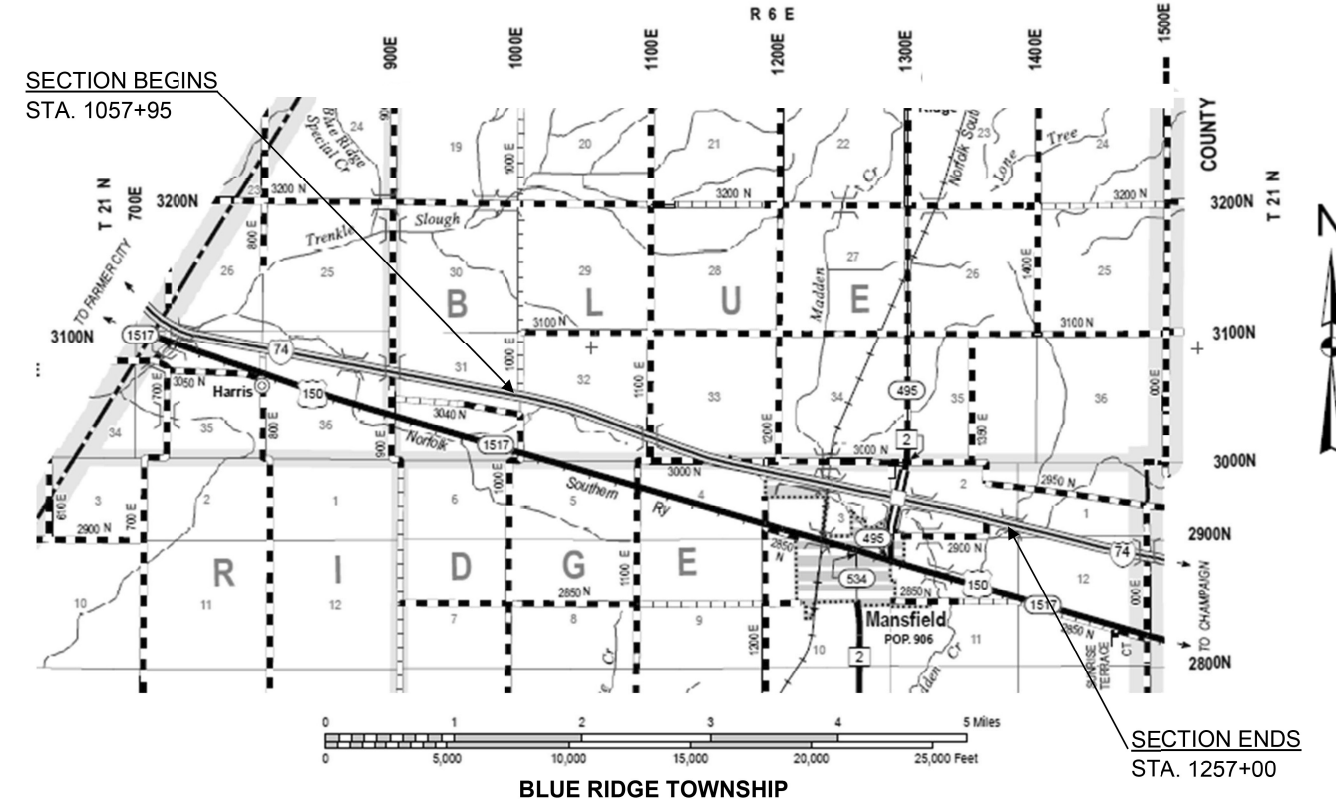
SCALE: NONE SHEET 1 OF 1 SHEETS STA. TO STA.

F.A.I. RTE.	SECTION	COUNTY	TOTAL SHEETS	SHEET NO.
74	D5 CM PATCH 2023-1	*	10	2
* DEWITT & PIATT			CONTRACT NO. 70G19	
ILLINOIS FED. AID PROJECT				

**LOCATION 1
I-74 DEWITT COUNTY
MCLEAN COUNTY LINE TO PIATT COUNTY LINE**



**LOCATION 2
I-74 PIATT COUNTY
3.0 MILES EAST OF THE MCLEAN COUNTY LINE TO EAST OF MANSFIELD**



MODEL: I:\MODELS\MNMF
FILE: MnMF_Plan\I-74\I-74.dwg
PROJECT: I:\MODELS\MNMF\I-74\I-74.dwg
PROJECT: I:\MODELS\MNMF\I-74\I-74.dwg

USER NAME = Bridgette.Pierson	DESIGNED -	REVISED -
DRAWN -	REVISED -	
PLOT SCALE = 40,0000 * / in.	CHECKED -	REVISED -
PLOT DATE = 2/1/2023	DATE -	REVISED -

**STATE OF ILLINOIS
DEPARTMENT OF TRANSPORTATION**

LOCATION MAPS

SCALE: NONE SHEET 1 OF 1 SHEETS STA. TO STA.

F.A.I. RTE.	SECTION	COUNTY	TOTAL SHEETS	SHEET NO.
74	D5 CM PATCH 2023-1	-	10	3
* DEWITT & PIATT			CONTRACT NO. 70G19	
ILLINOIS FED. AID PROJECT				

SUMMARY OF QUANTITIES

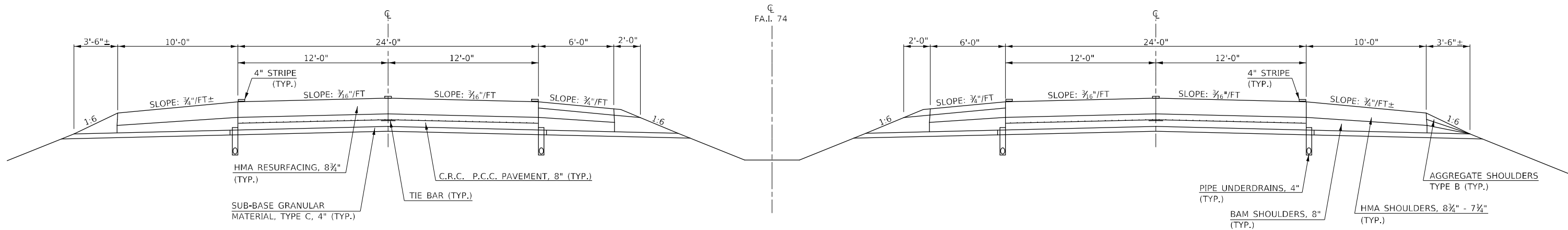
LOCATION OF WORK: FUNDING BREAKOUT: CONSTRUCTION TYPE CODE:	FAI 74 (I-74) INTERSTATE RURAL STA. 608+90.00 - STA. 610+00.00 (BK) STA. 633+68.77 (AH) - STA. 910+00.00 DEWITT 100% STATE 0006	FAI 74 (I-74) INTERSTATE RURAL STA. 1057+95.00 - STA. 1060+00.00 (BK) STA. 1058+52.16 (AH) - STA. 1257+00.00 PIATT 100% STATE 0006
---	--	---

CODE NO.	ITEM	UNIT	TOTAL QUANTITY	ROADWAY QUANTITY	ROADWAY QUANTITY
X1700058	CLASS A PATCHES, TYPE I, 17" SPECIAL	SQ YD	8.0	8.0	
X1700059	CLASS A PATCHES, TYPE II, 17" SPECIAL	SQ YD	102.0	102.0	
X1700060	CLASS A PATCHES, TYPE III, 17" SPECIAL	SQ YD	126.0	126.0	
X1700061	CLASS A PATCHES, TYPE IV, 17" SPECIAL	SQ YD	80.0	80.0	
X4420648	CLASS A PATCHES, TYPE 1, 18" SPECIAL	SQ YD	4.0		4.0
X4420649	CLASS A PATCHES, TYPE II, 18" SPECIAL	SQ YD	190.0		190.0
X4420650	CLASS A PATCHES, TYPE III, 18" SPECIAL	SQ YD	16.0		16.0
X4420651	CLASS A PATCHES, TYPE IV, 18" SPECIAL	SQ YD	83.0		83.0
Z0013798	CONSTRUCTION LAYOUT	L SUM	1.0	0.5	0.5
* DENOTES SPECIALTY ITEM					

MODEL: \\MODEL\MAME
 FILE: \\MAILS_P\pub\lucy\paw_bentley.com\PIV\DOT\Documents\DOT_Offices\Dir\dir: S:\Project\70G19\CAD\DATA\CAD\Sheet\70G19\sh-500.dgn

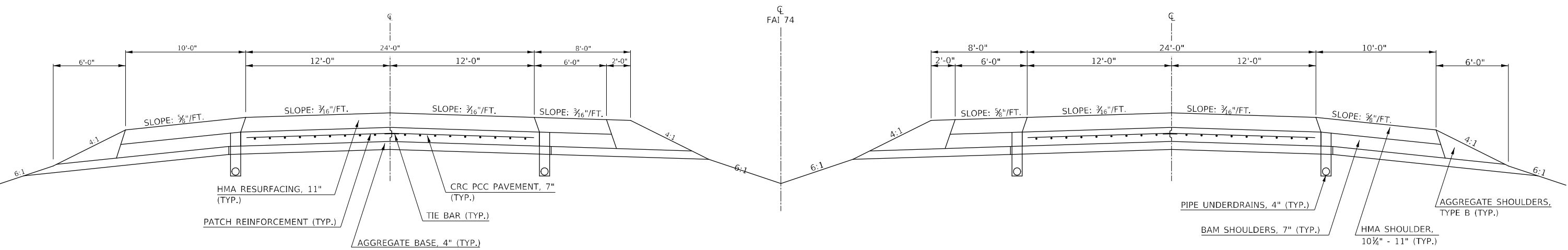
LOCATION 1 TYPICAL CROSS SECTION FAI 74

DEWITT COUNTY
 MCLEAN CO. LINE TO PIATT CO. LINE
 STATION 608+90.00 TO STATION 610+00.00 (BK)
 STATION 633+68.77 (AH) TO STATION 910+00.00



LOCATION 2 TYPICAL CROSS SECTION FAI 74

PIATT COUNTY
 3.0 MILES E. OF MCLEAN CO. LINE TO E. OF MANSFIELD
 STATION 1057+95.00 TO STATION 1257+00.00



MODEL: \\MODEL\MNMF
 FILE: \\MAIL: p...
 PROJECT: 70G19\CADD\DATA\CAD\Sheet\70G19-1-1-1.dwg
 PLOT DATE: 2/1/2023

USER NAME = Bridgette.Pierson	DESIGNED -	REVISED -
PLOT SCALE = 40,0000 * / in.	DRAWN -	REVISED -
PLOT DATE = 2/1/2023	CHECKED -	REVISED -
	DATE -	REVISED -

**STATE OF ILLINOIS
 DEPARTMENT OF TRANSPORTATION**

TYPICAL CROSS SECTIONS LOCATIONS 1 & 2			
SCALE: NONE	SHEET 1	OF 1 SHEETS	STA. TO STA.

F.A.I. RTE.	SECTION	COUNTY	TOTAL SHEETS	SHEET NO.
74	D5 CM PATCH 2023-1	*	10	6
* DEWITT & PIATT		CONTRACT NO. 70G19		
ILLINOIS FED. AID PROJECT				

RURAL
LOCATION 1
I-74
DEWITT COUNTY

STATION	DIRECTION	LANE	LENGTH FT	WIDTH FT	AREA SQYD	CLASS A PATCHES, TYPE I, 17 INCH SPECIAL (SQ YD)	CLASS A PATCHES, TYPE II, 17 INCH SPECIAL (SQ YD)	CLASS A PATCHES, TYPE III, 17 INCH SPECIAL (SQ YD)	CLASS A PATCHES, TYPE IV, 17 INCH SPECIAL (SQ YD)	PATCH REINFORCEMENT (SQ YD)	SAW CUTS (FT)	TIE BARS 3/4" (EACH)
						X1700058 RURAL	X1700059 RURAL	X1700060 RURAL	X1700061 RURAL	44213000 RURAL	44213200 RURAL	44213204 RURAL
609+42.80	WB	DL	15.00	6.00	10.00		10.00			10.00	42.00	10.00
636+81.35	WB	DL	24.00	6.00	16.00			16.00		16.00	60.00	18.00
685+91.75	WB	PL	6.00	12.00	8.00		8.00			8.00	36.00	22.00
685+91.75	WB	PL	7.00	12.00	9.33		9.33			9.33	38.00	22.00
761+94.95	WB	DL	8.00	12.00	10.67		10.67			10.67	40.00	22.00
803+13.35	WB	DL	30.00	6.00	20.00			20.00		20.00	72.00	20.00
806+30.15	WB	DL	6.00	12.00	8.00		8.00			8.00	36.00	22.00
806+30.15	WB	DL	6.00	12.00	8.00		8.00			8.00	36.00	22.00
815+27.75	WB	DL	10.00	12.00	13.33		13.33			13.33	44.00	22.00
842+73.35	WB	PL	40.00	6.00	26.67				26.67	26.67	92.00	23.00
843+78.95	WB	DL	20.00	12.00	26.67				26.67	26.67	64.00	29.00
872+82.95	WB	PL	12.00	6.00	8.00		8.00			8.00	36.00	10.00
LOCATION 1 WESTBOUND SUBTOTALS							75.33	36.00	53.34	164.67	596.00	242.00
712+31.75	EB	DL	12.00	12.00	16.00			16.00		16.00	48.00	22.00
736+07.75	EB	PL	6.00	12.00	8.00		8.00			8.00	36.00	22.00
746+63.75	EB	DL	6.00	6.00	4.00	4.00				4.00	24.00	10.00
779+90.15	EB	PL	20.00	12.00	26.67				26.67	26.67	64.00	29.00
789+93.35	EB	DL	12.00	12.00	16.00			16.00		16.00	48.00	22.00
791+51.75	EB	PL	6.00	6.00	4.00	4.00				4.00	24.00	10.00
796+79.75	EB	DL	8.00	12.00	10.67		10.67			10.67	40.00	22.00
796+79.75	EB	DL	6.00	12.00	8.00		8.00			8.00	32.00	22.00
814+74.95	EB	DL	30.00	6.00	20.00			20.00		20.00	72.00	20.00
876+52.55	EB	DL	14.00	12.00	18.67			18.67		18.67	52.00	22.00
876+52.55	EB	DL	14.00	12.00	18.67			18.67		18.67	52.00	22.00
LOCATION 1 EASTBOUND SUBTOTALS						8.00	26.67	89.34	26.67	150.68	492.00	223.00
LOCATION 1 SUBTOTALS						8.0	102.0	125.3	80.0	315.4	1,088.0	465.0
LOCATION 1 TOTALS USE:						8.0	102.0	126.0	80.0	316.0	1,088.0	465.0

MODEL: I:\MODEL\NAME
 FILE: NAME.dwg
 PROJECT: I:\CAD\DATA\CAD\PROJECTS\70G19\I-74-Sched.dwg

USER NAME = Bridgette.Pierson	DESIGNED -	REVISED -
	DRAWN -	REVISED -
PLOT SCALE = 40,0000 * / in.	CHECKED -	REVISED -
PLOT DATE = 2/1/2023	DATE -	REVISED -

**STATE OF ILLINOIS
DEPARTMENT OF TRANSPORTATION**

**SCHEDULE OF QUANTITIES
LOCATION 1 DEWITT COUNTY**

SCALE: NONE SHEET 1 OF 2 SHEETS STA. TO STA.

F.A.I. RTE.	SECTION	COUNTY	TOTAL SHEETS	SHEET NO.
74	D5 CM PATCH 2023-1	*	10	7
* DEWITT & PIATT			CONTRACT NO. 70G19	
ILLINOIS		FED. AID PROJECT		

RURAL
LOCATION 2
I-74
PIATT COUNTY

STATION	DIRECTION	LANE	LENGTH FT	WIDTH FT	AREA SQYD	CLASS A PATCHES, TYPE 1, 18 INCH SPECIAL (SQ YD)	CLASS A PATCHES, TYPE 2, 18 INCH SPECIAL (SQ YD)	CLASS A PATCHES, TYPE 3, 18 INCH SPECIAL (SQ YD)	CLASS A PATCHES, TYPE 4, 18 INCH SPECIAL (SQ YD)	PATCH REINFORCEMENT (SQ YD)	SAW CUTS (FT)	TIE BARS 3/4" (EACH)
						X4420648 RURAL	X1700106 RURAL	X4420650 RURAL	X4420651 RURAL	44213000 RURAL	44213200 RURAL	44213204 RURAL
1057+66.10	WB	DL	10.00	12.00	13.33		13.33			13.33	44.00	22.00
1065+05.30	WB	DL	10.00	12.00	13.33		13.33			13.33	44.00	22.00
1065+05.30	WB	PL	10.00	12.00	13.33		13.33			13.33	44.00	22.00
1118+38.10	WB	PL	6.00	12.00	8.00		8.00			8.00	36.00	22.00
1179+62.90	WB	DL	12.00	12.00	16.00			16.00		16.00	48.00	22.00
1184+38.10	WB	DL	6.00	12.00	8.00		8.00			8.00	36.00	22.00
1189+13.30	WB	DL	20.00	6.00	13.33		13.33			13.33	52.00	17.00
1189+66.10	WB	DL	6.00	12.00	8.00		8.00			8.00	36.00	22.00
1190+18.90	WB	DL	44.00	6.00	29.33				29.33	29.33	100.00	25.00
1189+66.10	WB	PL	6.00	12.00	8.00		8.00			8.00	36.00	22.00
1246+15.70	WB	DL	10.00	12.00	13.33		13.33			13.33	44.00	22.00
1246+15.70	WB	PL	10.00	12.00	13.33		13.33			13.33	44.00	22.00
LOCATION 2 WESTBOUND SUBTOTALS							111.98	16.00	29.33	157.31	564.00	240.00
1109+93.30	EB	DL	6.00	6.00	4.00	4.00				4.00	24.00	10.00
1110+46.10	EB	PL	10.00	12.00	13.33		13.33			13.33	44.00	22.00
1139+50.10	EB	DL	6.00	12.00	8.00		8.00			8.00	36.00	22.00
1139+50.10	EB	PL	6.00	12.00	8.00		8.00			8.00	36.00	22.00
1177+51.70	EB	DL	6.00	12.00	8.00		8.00			8.00	36.00	22.00
1178+04.50	EB	PL	6.00	12.00	8.00		8.00			8.00	36.00	22.00
1184+38.10	EB	DL	6.00	12.00	8.00		8.00			8.00	36.00	22.00
1184+90.90	EB	DL	12.00	6.00	8.00		8.00			8.00	36.00	10.00
1185+43.70	EB	DL	20.00	12.00	26.67				26.67	26.67	64.00	29.00
1190+18.90	EB	DL	40.00	6.00	26.67				26.67	26.67	92.00	23.00
1190+71.70	EB	DL	6.00	12.00	8.00		8.00			8.00	36.00	22.00
1190+71.70	EB	PL	6.00	12.00	8.00		8.00			8.00	36.00	22.00
LOCATION 2 EASTBOUND SUBTOTALS						4.00	77.33		53.34	134.67	512.00	270.00
LOCATION 2 SUBTOTALS						4.0	189.3	16.0	82.7	292.0	1,076.0	510.0
LOCATION 2 TOTALS USE:						4.0	190.0	16.0	83.0	292.0	1,076.0	510.0

MODEL: I:\MODEL\NAME: FILE: NAME: P:\Public\paw_bentley.com\FW\DOT\Documents\DOT_office\Dir\dir: S:\Project\0570G\0\CAD\DATA\CAD\Sheet\0570G\0\p-h-Sched.dgn

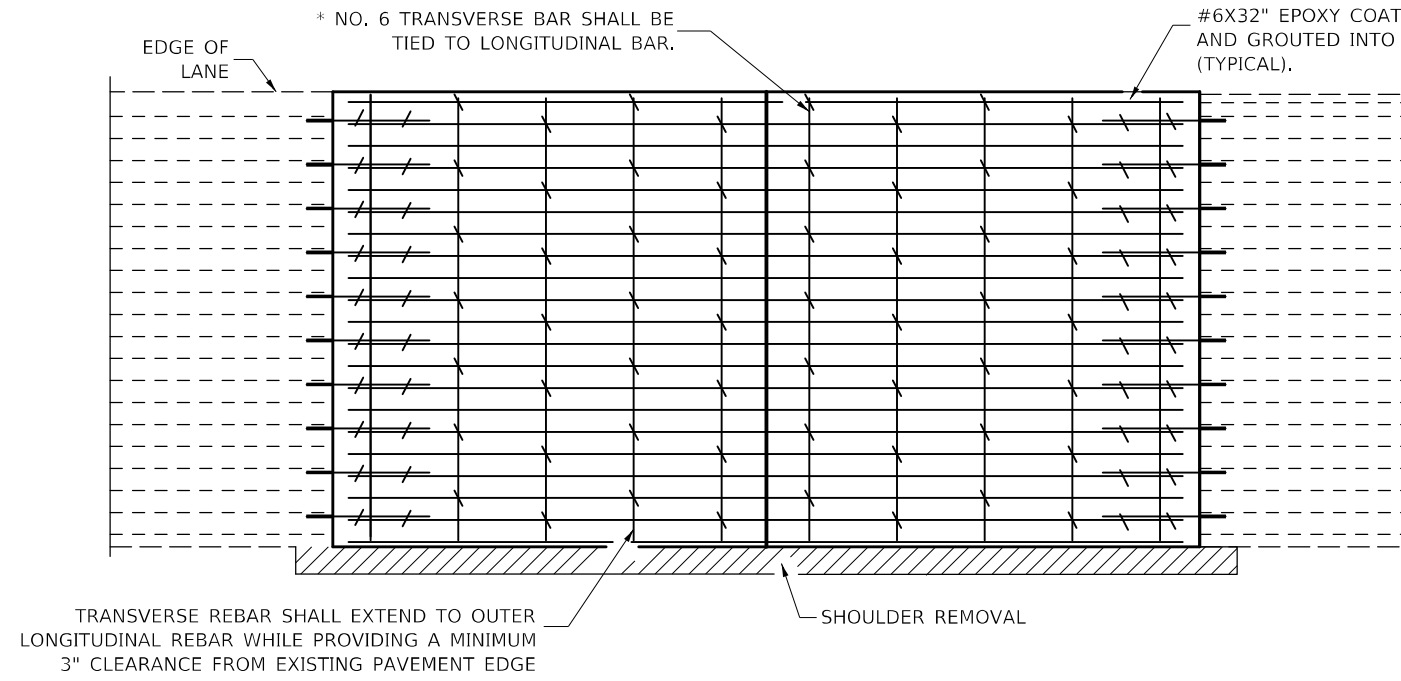
USER NAME = Bridgette.Pierson	DESIGNED -	REVISED -
	DRAWN -	REVISED -
PLOT SCALE = 40,0000 * / in.	CHECKED -	REVISED -
PLOT DATE = 2/1/2023	DATE -	REVISED -

**STATE OF ILLINOIS
DEPARTMENT OF TRANSPORTATION**

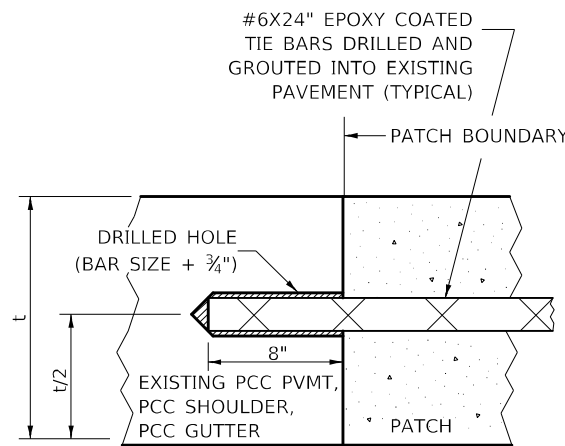
**SCHEDULE OF QUANTITIES
LOCATION 2 PIATT COUNTY**

SCALE: NONE SHEET 2 OF 2 SHEETS STA. TO STA.

F.A.I. RTE.	SECTION	COUNTY	TOTAL SHEETS	SHEET NO.
74	D5 CM PATCH 2023-1	*	10	8
* DEWITT & PIATT			CONTRACT NO. 70G19	
ILLINOIS		FED. AID PROJECT		

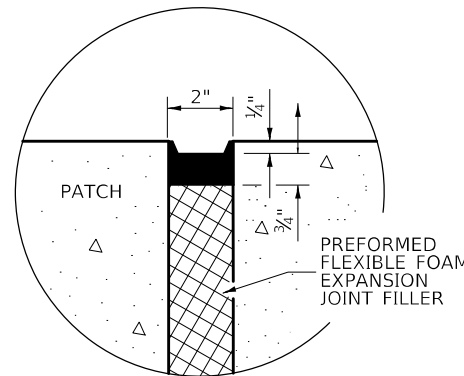


PAVEMENT REINFORCEMENT DETAIL

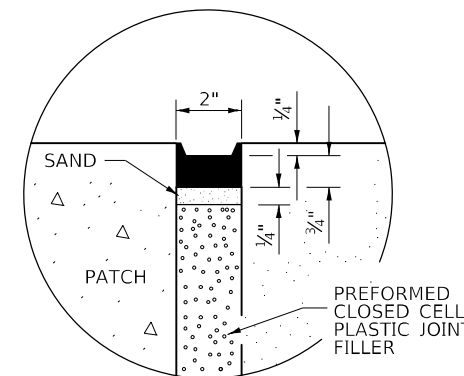


LONGITUDINAL CONSTRUCTION JOINT

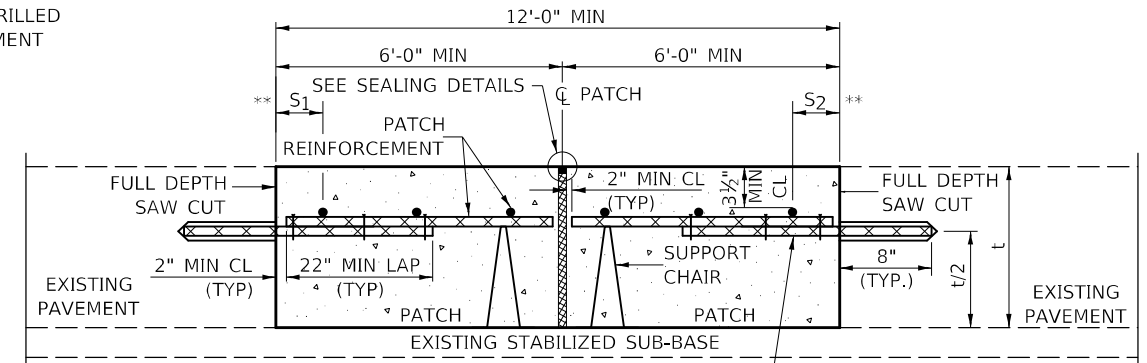
PATCHES MORE THAN 20' IN LENGTH SHALL BE TIED TO ADJACENT PAVEMENT, PCC SHOULDERS OR PCC CURB AND GUTTER WITH #6x24" EPOXY COATED TIE BARS AT 36" CENTERS.



SEALING DETAIL

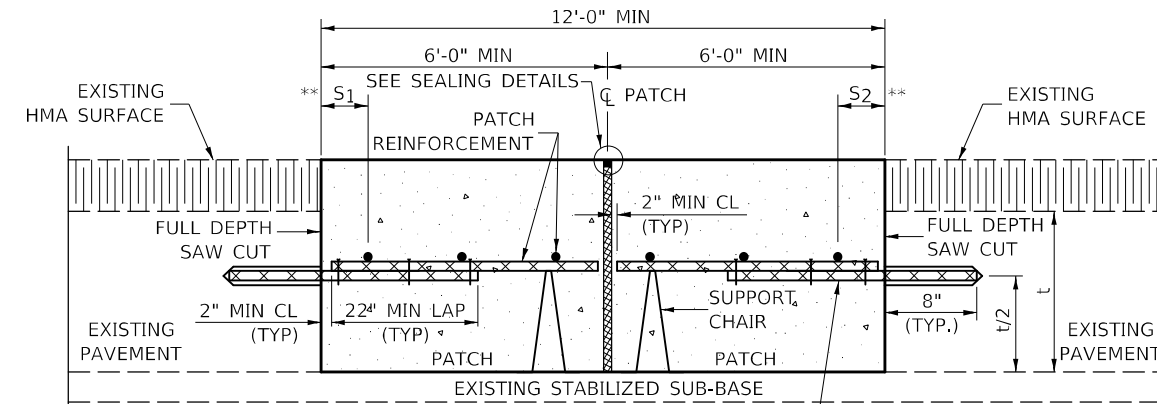


SEALING DETAIL



WITHOUT HMA OVERLAY

#6X32" EPOXY COATED TIE BARS DRILLED AND GROUTED INTO EXISTING PAVEMENT (TYPICAL)



WITH HMA OVERLAY

#6X32" EPOXY COATED TIE BARS DRILLED AND GROUTED INTO EXISTING PAVEMENT (TYPICAL)

CLASS A PATCH WITH EXPANSION JOINT

NOTES:

EXISTING LONGITUDINAL REINFORCEMENT SPACING; ±6 1/2".

SPACING OF NEW LONGITUDINAL REINFORCEMENT AND NEW LONGITUDINAL TIE BARS SHALL MATCH SPACING OF EXISTING REINFORCEMENT AND SHALL BE TIED TOGETHER WITH A MINIMUM OF TWO TIES PER BAR.

SUPPORT CHAIRS SHALL BE REQUIRED WHENEVER PATCH LENGTH EXCEEDS 6'-0"

* EVERY THIRD INTERSECTION MUST BE TIED, WHEN THE MINIMUM CLEARANCE CANNOT BE OBTAINED WITH THE TRANSVERSE REBAR ON TOP, THEN THE TRANSVERSE REBAR SHALL BE TIED TO THE BOTTOM OF THE LONGITUDINAL REBAR.

** VARIABLES WHERE S₁ AND S₂ ARE 2 1/2" MIN. AND 12" MAX.

Note: All dimensions are in INCHES (millimeters) unless otherwise shown.

DISTRICT 5 DETAIL NO. 44200AAA

MODEL: 44200AAA.DWG
FILE: 44200AAA.DWG
PROJECT: 2023-01-01
DRAWN: JWS
CHECKED: JWS
DATE: 1/2021

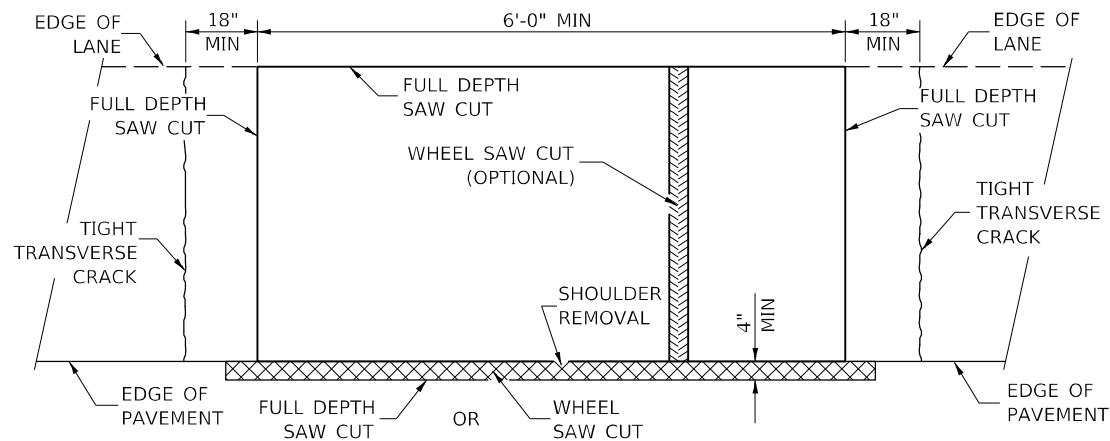
USER NAME = Bridgette.Pierson	DESIGNED - JWS	REVISED -
PLOT SCALE = 40,0000 */ in.	CHECKED -	REVISED -
PLOT DATE = 2/1/2023	DATE - 1/2021	REVISED -

**STATE OF ILLINOIS
DEPARTMENT OF TRANSPORTATION**

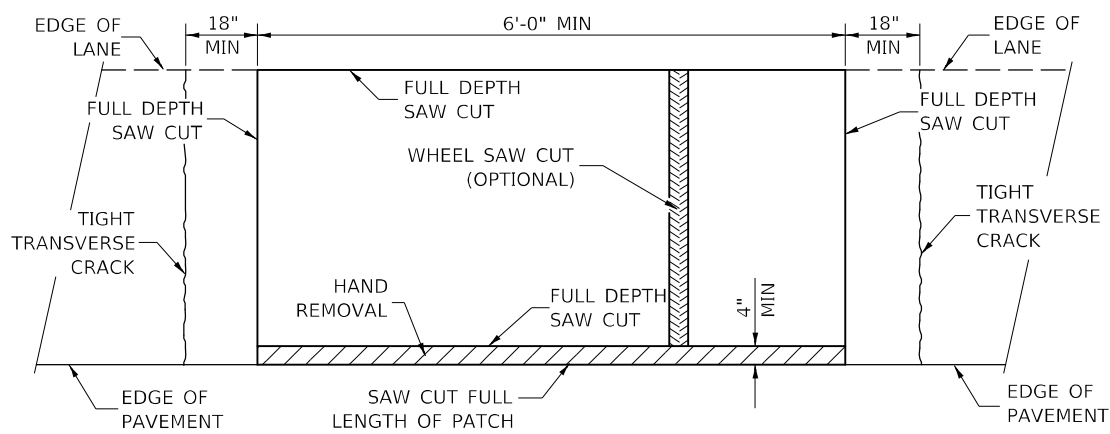
CLASS A PATCHES (SPECIAL)

SCALE: NONE SHEET 2 OF 2 SHEETS STA. TO STA.

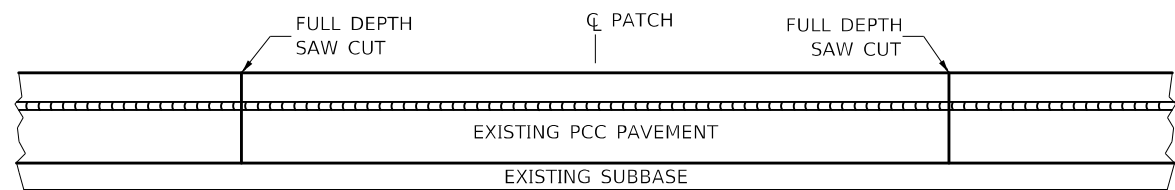
F.A.I. RTE.	SECTION	COUNTY	TOTAL SHEETS	SHEET NO.
74	D5 CM PATCH 2023-1	-	10	9
* DEWITT & PIATT			CONTRACT NO. 70G19	
ILLINOIS FED. AID PROJECT				



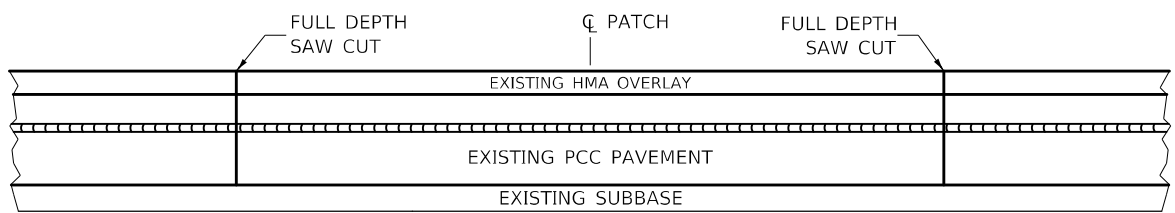
**PAVEMENT SAWING DETAIL
(HMA SHOULDER)**



**PAVEMENT SAWING DETAIL
(PCC SHOULDER)**

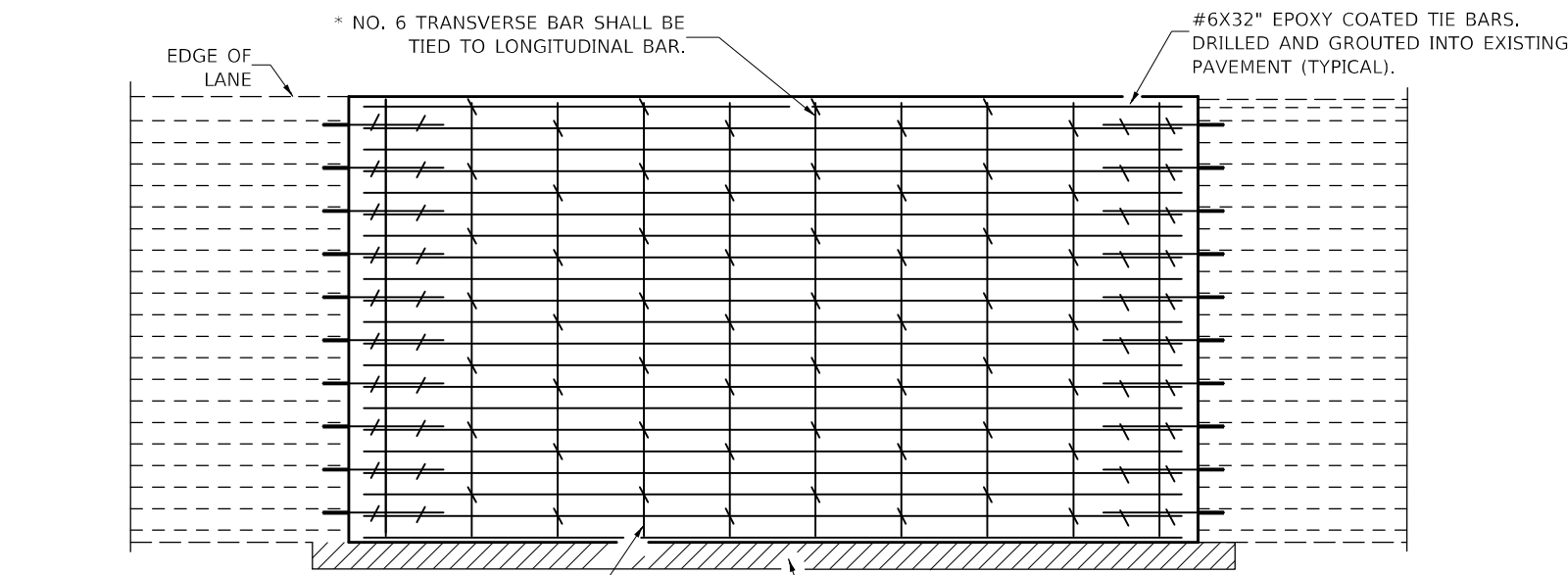


EXISTING PAVEMENT WITHOUT HMA SURFACE



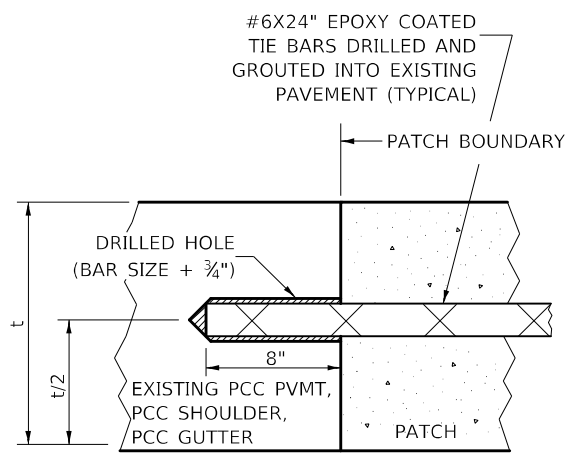
EXISTING PAVEMENT WITH HMA SURFACE

**PAVEMENT SAWING DETAIL FOR CLASS A PATCHING
(CRC PAVEMENT)**



PAVEMENT REINFORCEMENT DETAIL

TRANSVERSE REBAR SHALL EXTEND TO OUTER LONGITUDINAL REBAR WHILE PROVIDING A MINIMUM 3" CLEARANCE FROM EXISTING PAVEMENT EDGE



LONGITUDINAL CONSTRUCTION JOINT

PATCHES MORE THAN 20' IN LENGTH SHALL BE TIED TO ADJACENT PAVEMENT, PCC SHOULDERS OR PCC CURB AND GUTTER WITH #6x24" EPOXY COATED TIE BARS AT 24" CENTERS.

NOTES:

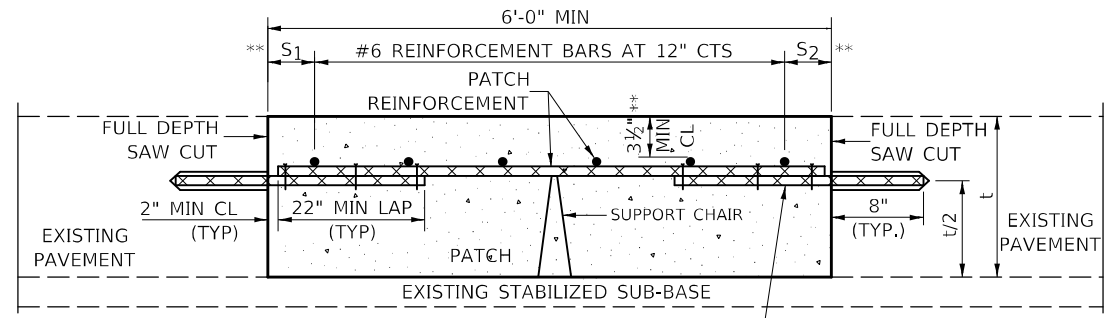
EXISTING LONGITUDINAL REINFORCEMENT SPACING; $\pm 6\frac{1}{2}$ ".

SPACING OF NEW LONGITUDINAL REINFORCEMENT AND NEW LONGITUDINAL TIE BARS SHALL MATCH SPACING OF EXISTING REINFORCEMENT AND SHALL BE TIED TOGETHER WITH A MINIMUM OF TWO TIES PER BAR.

SUPPORT CHAIRS SHALL BE REQUIRED WHENEVER PATCH LENGTH EXCEEDS 6'-0"

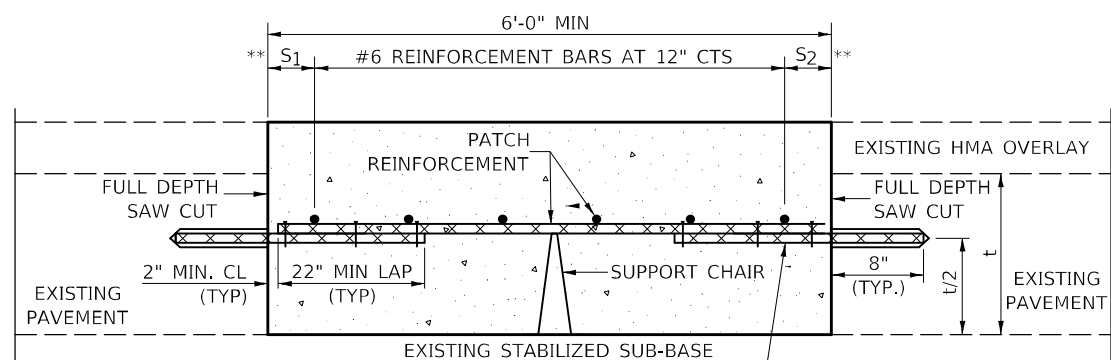
* EVERY THIRD INTERSECTION MUST BE TIED. WHEN THE MINIMUM CLEARANCE CANNOT BE OBTAINED WITH THE TRANSVERSE REBAR ON TOP, THEN THE TRANSVERSE REBAR SHALL BE TIED TO THE BOTTOM OF THE LONGITUDINAL REBAR.

** VARIABLES WHERE S_1 AND S_2 ARE $2\frac{1}{2}$ " MIN. AND 12" MAX.



WITHOUT HMA OVERLAY

#6X32" EPOXY COATED TIE BARS DRILLED AND GROUTED INTO EXISTING PAVEMENT (TYPICAL)



WITH HMA OVERLAY

#6X32" EPOXY COATED TIE BARS DRILLED AND GROUTED INTO EXISTING PAVEMENT (TYPICAL)

**PATCHING DETAIL FOR CLASS A PATCHING
(CRC PAVEMENT)**

Note: All dimensions are in INCHES (millimeters) unless otherwise shown.

MODEL: I:\MODEL\NAME FILE: NAME: P:\PUBLIC\paw_bentley.com\PIV\DOT\Documents\DOT Office\Drawings\Project\0570G\0570G19-PAV-Detail.dwg

USER NAME = Bridgette.Pierson	DESIGNED - JWS	REVISED -
DRAWN -	REVISED -	REVISED -
PLOT SCALE = 40,0000 */ in.	CHECKED -	REVISED -
PLOT DATE = 2/1/2023	DATE - 1/2021	REVISED -

**STATE OF ILLINOIS
DEPARTMENT OF TRANSPORTATION**

CLASS A PATCHES (SPECIAL)

SCALE: NONE SHEET 1 OF 2 SHEETS STA. TO STA.

DISTRICT 5 DETAIL NO. 44200AAA

F.A.I. RTE.	SECTION	COUNTY	TOTAL SHEETS	SHEET NO.
74	D5 CM PATCH 2023-1	-	10	10
* DEWITT & PIATT			CONTRACT NO. 70G19	
ILLINOIS FED. AID PROJECT				