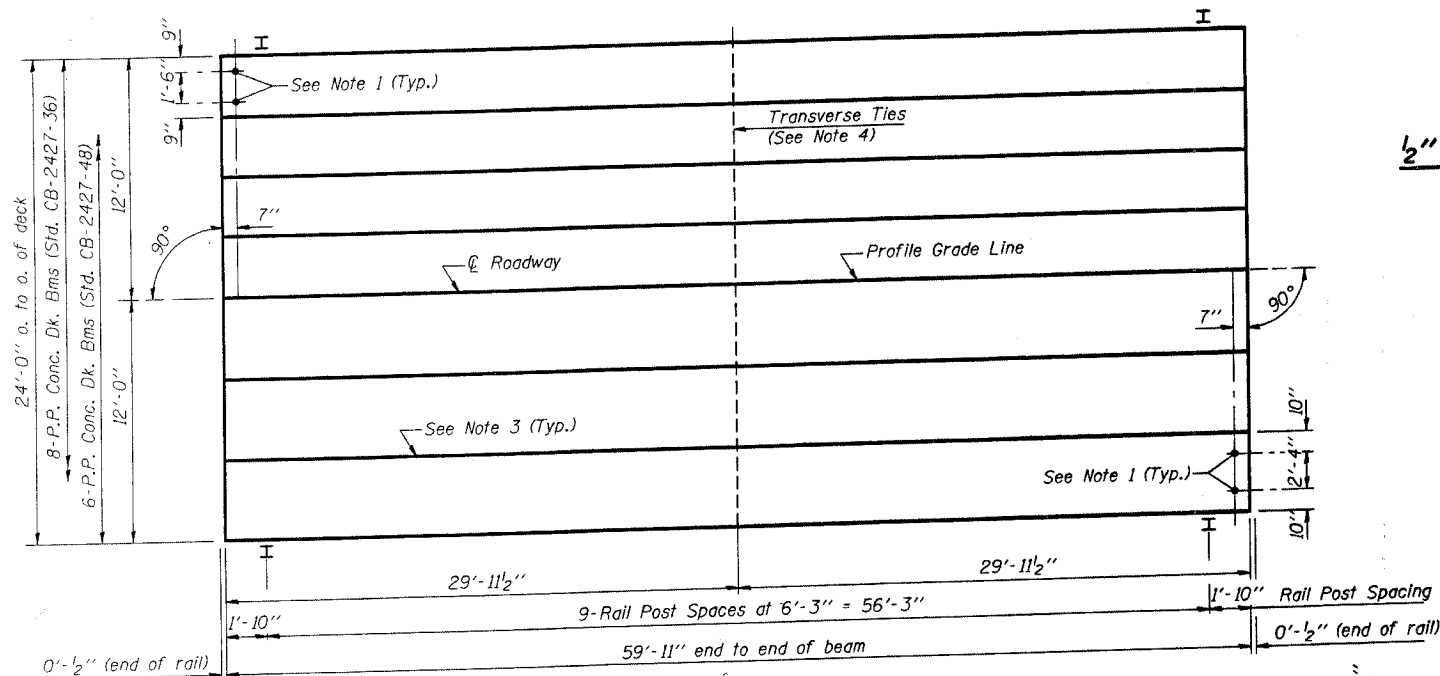


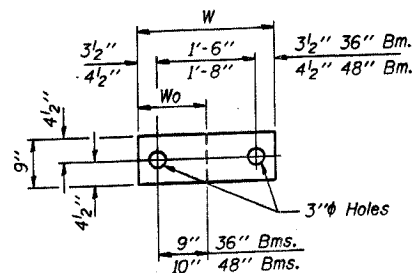
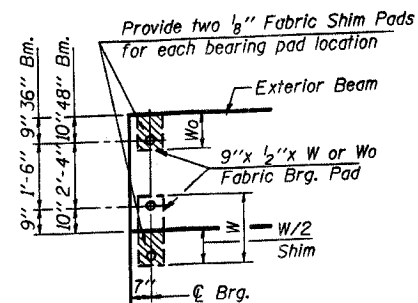
**TYPICAL ELEVATIONS**



**PLAN**

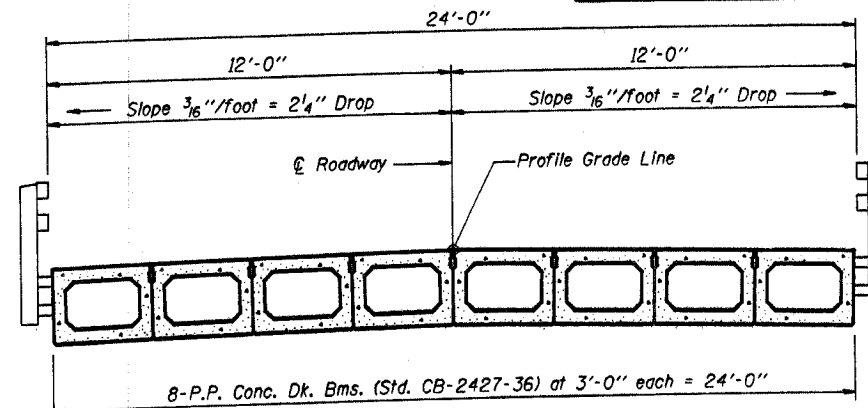
**NOTES**

- After beams have been erected, holes shall be drilled into substructure and anchor dowels placed. Dowel holes shall be filled with non-shrink grout to top of beam and allowed to cure min. 24 hrs. prior to grouting the shear keys.
- Nominal 1" joint at  $\text{\O}$  Pier shall be filled with non-shrink grout.
- Longitudinal keys shall be grouted.
- The 1"  $\phi$  rods in the transverse tie assembly shall be tightened to a snug fit and the threads set. Pockets that receive transverse tie bar outside shall be filled with grout after transverse tie assembly is in place.

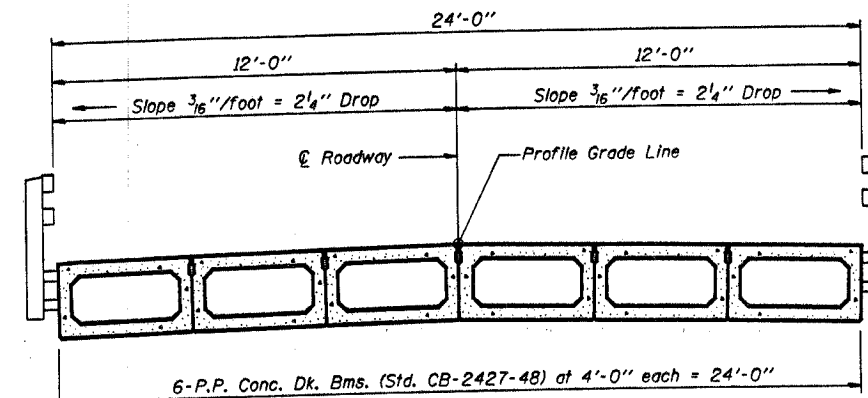


Beam	W	Wo
36"	2'-1"	1'-0 1/2"
48"	2'-5"	1'-2 1/2"

**1/2" FABRIC BRG. PAD DETAILS**



**CROSS SECTION**



**CROSS SECTION**

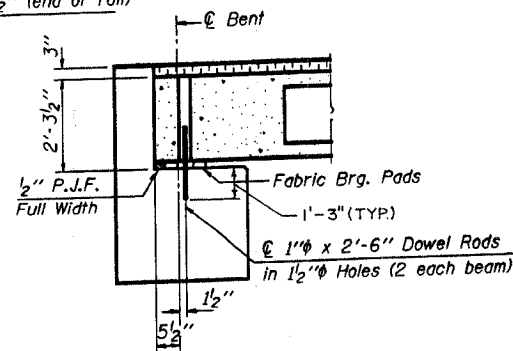
**QUANTITIES FOR ONE SPAN**

P.P. Conc. Dk. Bm. 27" Dp.	1440 Sq. Ft.
Steel Railing	120 Ft.

**P.P.C. DECK BEAM SUPERSTRUCTURE**

24' RDWY. 27" BMS. 60' SPAN 0° SKEW

STANDARD CS-2427-60



**SECTION AT ABUTS.**

(Along  $\text{\O}$  Beams)

Illinois Department of Transportation

PASSED APRIL 4, 2005

Theresa J. Nungesser  
Engineer of Bridge Design

APPROVED APRIL 4, 2005

Ralph E. Johnson  
Engineer of Bridges and Structures

ISSUED 01-1-1 066-1-1