

ROUTE	SECTION	COUNTY	TOWNSHIP	TOTAL SHEETS	SHEET NUMBER
T.R. 182	04-01180-00-BR	UNION	SEC 14, T11S, R11W	12	6
JOB NO. C-99-547-04			PROJECT NO. BROS-181 (24)		
BETHEL CHURCH ROAD			CONTRACT NO. 89215		

B.M. - 2-60 D NAILS SET IN T.P. - STA. 9+63, 27' RT. ELEV. 569.49

Existing Structure - STA. 9+85 - STA. 10+15 DUAL 15' SPANS, 14' WIDTH, TIMBER RUNNERS AND DECK, STEEL I-BEAM STRINGERS. ONE STONE AND MORTAR PIER, STONE AND MORTAR ABUTMENTS. PILING UNKNOWN.

SALVAGE - CONTRACTOR TO SALVAGE STONE FROM EXISTING STONE AND MORTAR PIER AND ABUTMENTS. STONE TO BE DELIVERED TO UNION COUNTY HIGHWAY DEPARTMENT IN JONESBORO, IL.

DESIGN SPECIFICATIONS

2002 AASHTO Standard Specifications - 17th ed.

LOADING HS20-44

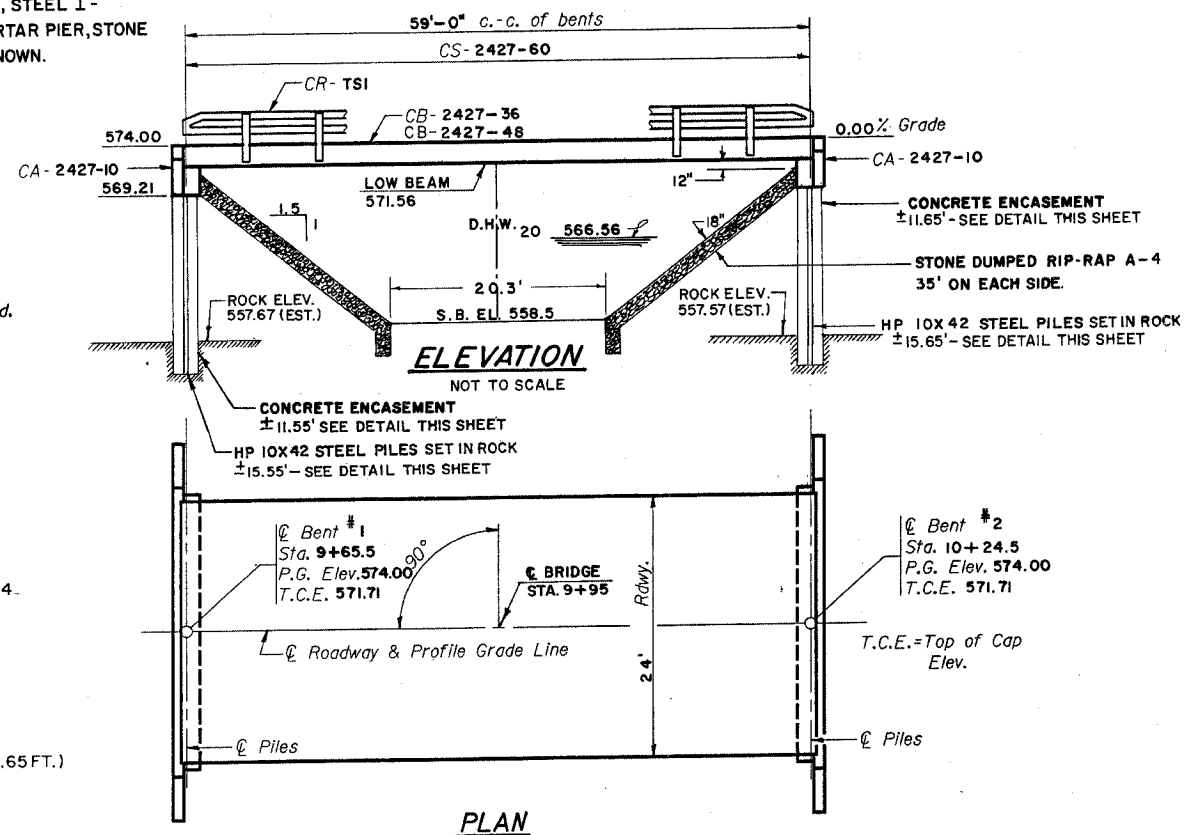
Allow 25#/sq. ft. for future wearing surface.

SEISMIC DATA

Seismic Performance Category (SPC) = B
Bedrock Acceleration Coefficient (A) = 0.14
Site Coefficient (S) = 1.0

PILE DATA (2-ABUTS.)

TYPE	HP 10X42 STEEL PILES SET PILES IN ROCK
CAPACITY	125 FEET (4 @ 15.55 FT. + 4 @ 15.65 FT.)
ESTIMATED LENGTH	8 EACH
NUMBER REQUIRED	



GENERAL NOTES

- See Special Provisions for boring logs.
- A Corrosion inhibitor, as covered in the Special Provisions, shall be used in the concrete for precast prestressed concrete deck beams.
- AFTER DECK BEAMS HAVE BEEN SET, THE DECK SURFACE SHALL BE INSPECTED. A WATERPROOFING MEMBRANE SYSTEM AND A BITUMINOUS CONCRETE WEARING SURFACE MAY BE REQUIRED TO PROVIDE A SMOOTH UNIFORM RIDING SURFACE. PAYMENT FOR THIS WORK, IF REQUIRED, WILL BE MADE BY A CHANGE ORDER TO THE CONTRACT.

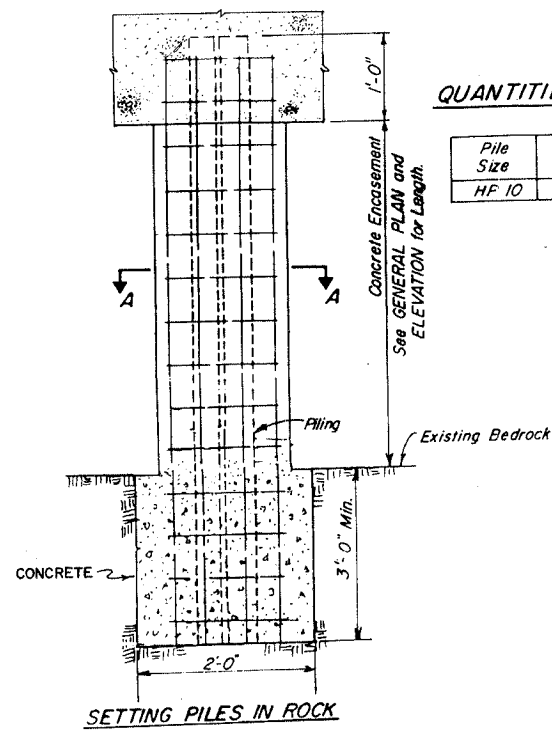
TOTAL BILL OF MATERIAL

Item	Unit	Super	Sub.		Total
			Piers	Abuts.	
Removal of Existing Structures	Each				1
STONE DUMPED RIP-RAP, CLASS A-4	Ton				275
Concrete Structures	Cu. Yd.			18.2	18.2
Precast Prestressed Concrete Deck Beams (27" Depth)	Sq. Ft.	1440			1440
Steel Railing, Type S-1	Foot	120			120
Reinforcement Bars	Pound			2300	2300
Furnishing STEEL PILES HP 10X42	Foot			125	125
SETTING PILES IN ROCK	Each			8	8
Name Plates	Each	1			1
CONCRETE ENCASEMENT	Cu. Yd.			8.0	8.0

NOTE: CHANNEL AND STRUCTURE EXCAVATION TO BE PAID FOR AS EARTH EXCAVATION.

QUANTITIES / LIN. FT. OF ENCASEMENT (STEEL PILES)

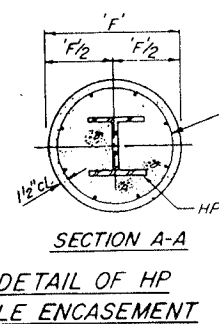
Pile Size	Item	Quantity
HP 10	Concrete Encasement	0.085 C.Y.



SETTING PILES IN ROCK

CONCRETE ENCASEMENT TO BE CONSTRUCTED FROM EXISTING BEDROCK TO BOTTOM OF BENT WHEN PILES ARE SET IN ROCK.

PILE DETAILS



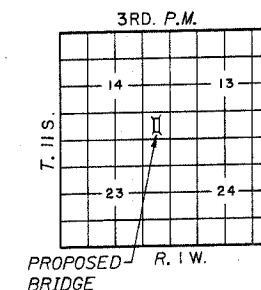
WELDED WIRE FABRIC 6X6-W4.0XW4.0 WEIGHING 58#/100 SQ. FT. THE COST OF REINFORCEMENT IS INCIDENTAL TO THE COST OF CONCRETE ENCASEMENT. FORMS FOR ENCASEMENT MAY BE OMITTED WHEN SOIL CONDITIONS WILL PERMIT.

PILE	1'-9"
HP 10	

A TRIBUTARY TO BRADSHAW CREEK
SEC. 04-01180-00-BR BUILT 2006
TR-182-BETHEL CHURCH ROAD
UNION COUNTY
LOADING HS20
STR. NO. 091-3225

LETTERING FOR NAME PLATE

Locate Name Plate at NORTHWEST Corner of Bridge (See Std. CN)



LOCATION SKETCH

WATERWAY INFORMATION

Drainage Area = 1.77 SQ. MI.		Low Grade Elev. = 574.0		Sta. 7+60 TO 10+40		
Flood	Freq. Yr.	Q C.F.S.	Opening Sq. Ft. Exist. Prop.	Nat. H.W.E.	Head - Ft. Exist. Prop.	Headwater El. Exist. Prop.
Design	20	1127	208 261	565.31	3.54 1.25	568.85 566.56
Base	100	1167	223 360	566.39	4.81 2.24	571.20 568.63
Overtopping						
Max. Calc.	500	2191				

INDEX OF SHEETS

- STANDARD CS-2427-60
- STANDARD CB-2427-36
- STANDARD CB-2427-48
- STANDARD CA-2427-10
- STANDARD CR-TSI
- STANDARD CN

GENERAL PLAN & ELEVATION

TR182-BETHEL CHURCH ROAD
OVER TRIBUTARY TO BRADSHAW CREEK

SECTION 04-01180-00-BR

UNION COUNTY

STATION 9+95