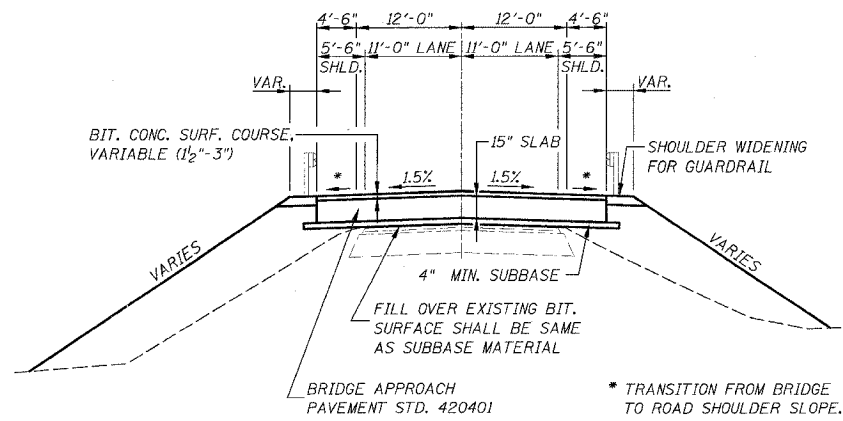
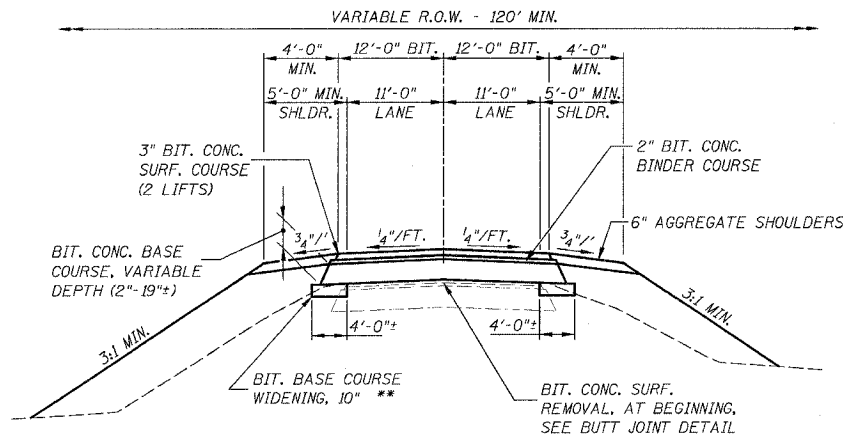


ROUTE NO.	SECTION	COUNTY	TOTAL SHEETS	SHEET NO.
FAS 788 (C.H. 24/C.H. 16)	03-00075-00-BR, WASH. 03-00082-00-BR, CLIN.	WASHINGTON CLINTON	22	3

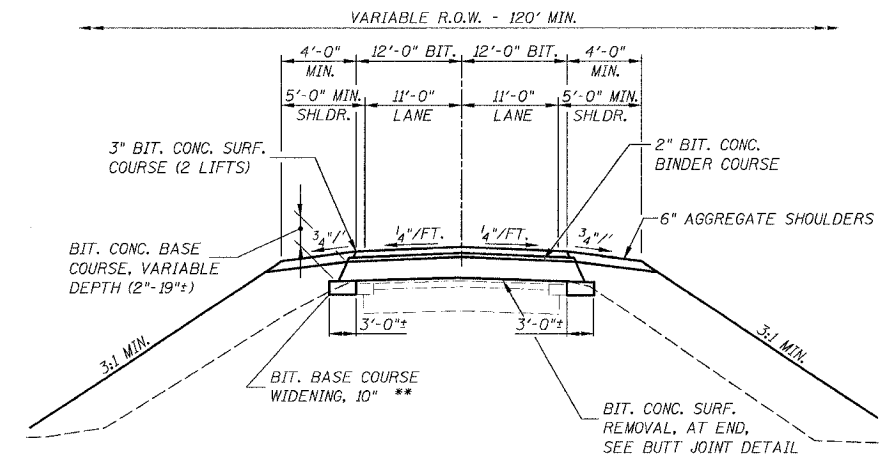
03/05/2013 10:06 AM FEB. 21, 2006



**PROPOSED TYPICAL SECTION THRU APPROACH PAVEMENT**  
STA. 203+64.36 TO STA. 203+94.36; STA. 207+13.64 TO STA. 207+43.64

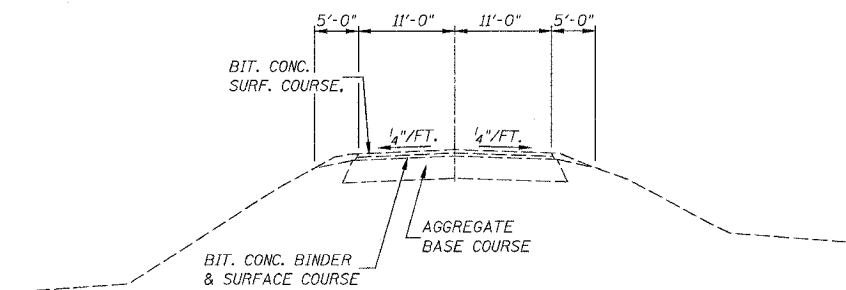


**PROPOSED TYPICAL SECTION**  
STA. 199+75 TO STA. 203+64.36

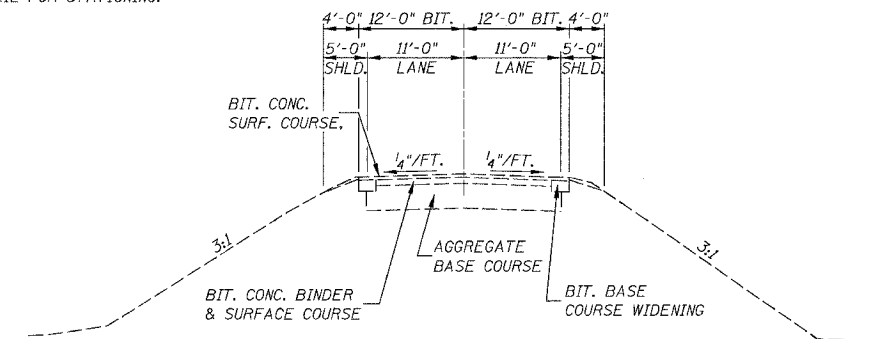


**PROPOSED TYPICAL SECTION**  
STA. 207+43.64 TO STA. 211+25

\*\* WIDENING WILL BE PLACED AT MILLING DEPTH FOR THE BUTT JOINTS. SEE PROPOSED BUTT JOINT TRANSITION DETAIL FOR STATIONING.



**EXISTING TYPICAL SECTION**  
STA. 199+75 TO STA. 204+20



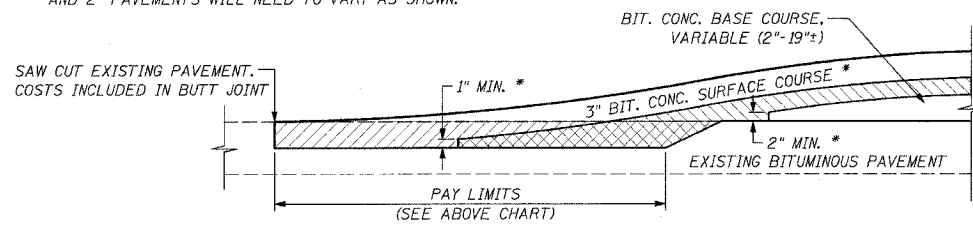
**EXISTING TYPICAL SECTION**  
STA. 206+72 TO STA. 211+25

LOCATION	STATION TO STATION
SOUTH SIDE	199+75 TO 201+20
NORTH SIDE	209+95 TO 211+25

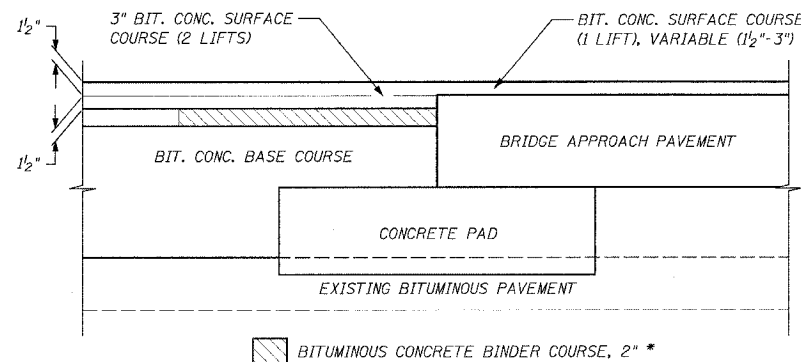
APPROXIMATE LIMITS OF SURFACE REMOVAL

- BITUMINOUS CONCRETE BINDER COURSE, 2" \*
- BITUMINOUS CONCRETE SURFACE REMOVAL, 3"

\* DUE TO A 1" MIN. PAVEMENT THICKNESS, THE 3" AND 2" PAVEMENTS WILL NEED TO VARY AS SHOWN.



**PROPOSED BUTT JOINT TRANSITION DETAIL**  
NOT TO SCALE



**PAVEMENT TRANSITION INTO BRIDGE APPROACH**  
NOT TO SCALE

**PAINT PAVEMENT MARKINGS**

LOCATION	PAINT PAVEMENT MARKING - LINE 4" (78001110)	WHITE 4"	YELLOW 4"
		LINES	LINES
LT STA 199+75 TO STA 211+25	WHITE - EDGE LANE LINE	1,150	--
CL STA 199+75 TO STA 211+25	YELLOW - CENTERLINE SKIP DASH	--	288
RT STA 199+75 TO STA 211+25	WHITE - EDGE LANE LINE	1,150	--
TOTAL		2,300	288
		2,588	

**TYPICAL ROADWAY SECTIONS**  
F.A.S. 788 (C.H. 24/C.H. 16)  
OVER CROOKED CREEK  
SECTION 03-00075-00-BR  
WASHINGTON COUNTY  
SECTION 03-00082-00-BR  
CLINTON COUNTY

DESIGNED:	L.D.G.
CHECKED:	B.G.H.
DRAWN:	K.H.L.
CHECKED:	L.D.G.

H.M. & G. INC. 5213