

ROUTE NO.	SECTION	COUNTY	TOTAL SHEETS	SHEET NO.
FAS 788 (C.H. 24/C.H. 16)	03-00075-00-BR, WASH. 03-00082-00-BR, CLIN.	WASHINGTON CLINTON	22	1

FEDERAL AID PROJECT

MAJOR BRIDGE PROGRAM

DETAIL PLANS FOR

F.A.S. 788 (C.H. 24/C.H. 16) OVER CROOKED CREEK

SECTION 03-00075-00-BR WASHINGTON COUNTY

SECTION 03-00082-00-BR CLINTON COUNTY

PROJECT NO. BRS-788(109)

JOB NO. C-98-355-04

INDEX OF SHEETS

1. COVER SHEET
2. SUMMARY OF QUANTITIES AND SCHEDULES
3. TYPICAL ROADWAY SECTIONS
4. DETOUR MAP
5. EROSION CONTROL PLAN
6. PLAN & PROFILE EXISTING & PROPOSED ROADWAY
- 7-10. CROSS SECTIONS EXISTING & PROPOSED ROADWAY
11. GENERAL PLAN & ELEVATION
12. GENERAL NOTES, DETAILS & TOTAL BILL OF MATERIAL
13. SUPERSTRUCTURE DETAILS
14. 42"x 36" P.P.C. DECK BEAM DETAILS
15. TYPE SM STEEL BRIDGE RAIL SIDE MOUNTED
16. PILE BENT ABUTMENT
17. PIER DETAILS
- 18-22. BORING LOGS

HIGHWAY STANDARDS

- | | |
|-----------|--|
| 280001-02 | TEMPORARY EROSION CONTROL SYSTEMS |
| 420401-05 | BRIDGE APPROACH PAVEMENT |
| 515001-02 | NAME PLATE FOR BRIDGE |
| 601101 | CONCRETE HEADWALL FOR PIPE DRAIN |
| 630001-06 | STEEL PLATE BEAM GUARDRAIL |
| 630301-03 | SHOULDER WIDENING FOR TYPE 1. (SPECIAL) GUARDRAIL TERMINALS |
| 631032-02 | TRAFFIC BARRIER TERMINAL, TYPE 6A |
| 635006-02 | REFLECTOR AND TERMINAL MARKER PLACEMENT |
| 702001-06 | TRAFFIC CONTROL DEVICES |
| BLR 21-6 | TYPICAL APPLICATION OF TRAFFIC CONTROL DEVICES FOR CONSTRUCTION ON RURAL LOCAL HIGHWAYS |
| BLR 22-4 | TYPICAL APPLICATION OF TRAFFIC CONTROL DEVICES FOR CONSTRUCTION ON RURAL LOCAL HIGHWAYS (TWO-LANE TWO WAY RURAL TRAFFIC) (ROAD CLOSED TO THRU TRAFFIC) |

DESIGN CLASSIFICATION

LOCAL ROAD A.D.T. = 400 - 2,000
 CURRENT A.D.T. = 1,350 (2000)
 FUNCTIONAL CLASSIFICATION: MAJOR COLLECTOR (RURAL)
 DESIGN A.D.T. = 1,800 (2024)
 DESIGN SPEED = 50 MPH

UTILITIES:

CALL J.U.L.I.E. BEFORE YOU DIG
 1-800-892-0123

TELEPHONE:

FRONTIER COMMUNICATIONS
 ALTAMONT, IL.
 (618) 483-6961

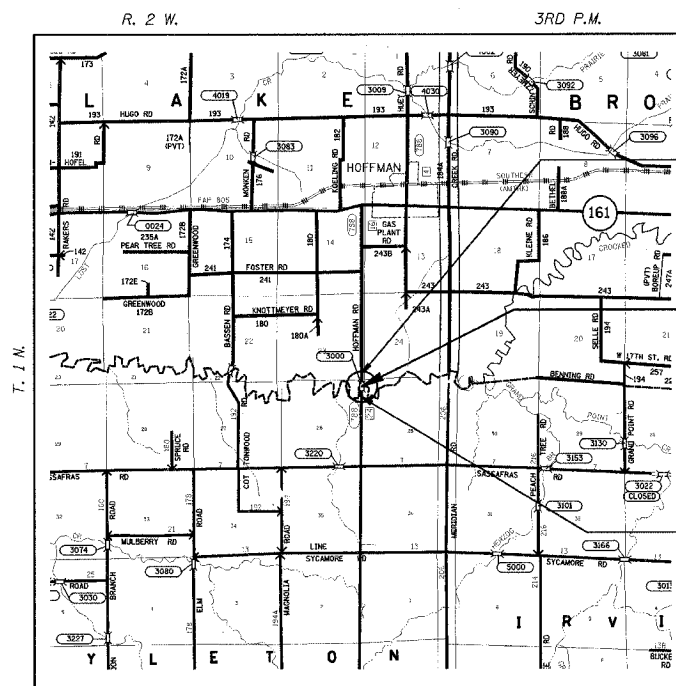
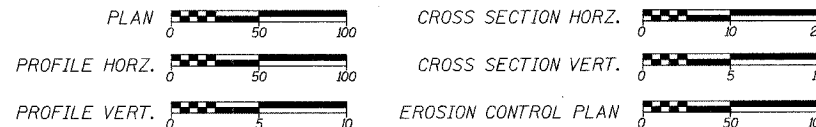
GAGING STA. NO. 05593520

U.S. ARMY CORPS OF ENGINEERS
 ST. LOUIS, MO.
 (800) 432-1208

U.S. GEOLOGICAL SURVEY
 MT. VERNON, IL.
 JOHN MAURER
 (618) 242-4495

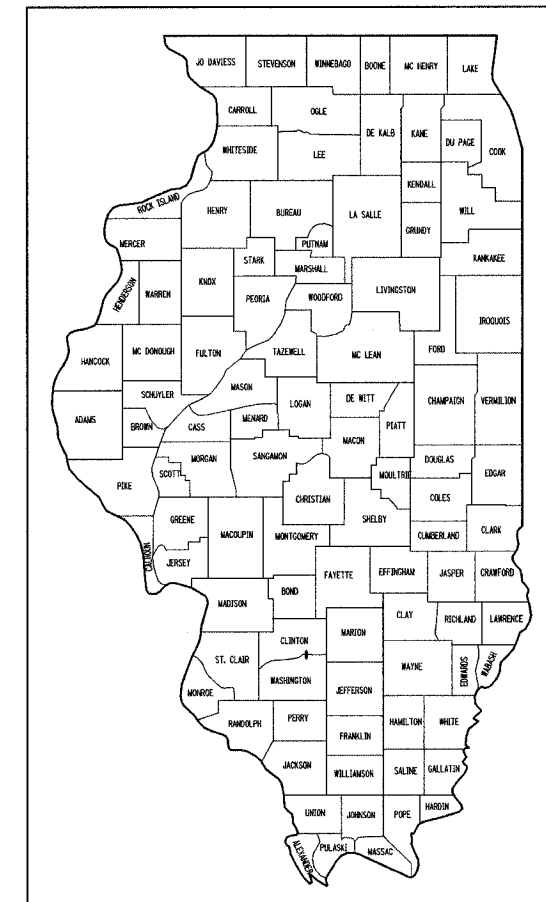
DESIGNED:	L.D.G.
CHECKED:	B.G.H.
DRAWN:	K.H.L.
CHECKED:	L.D.G.

SCALES:



LOCATION MAP

NET LENGTH OF PROJECT = 1,150 FEET = 0.218 MILES



PROJECT LOCATION

PROPOSED STRUCTURE NO. 095-3252 STATION 205+54
 THREE SIMPLE SPANS, PRECAST PRESTRESSED CONCRETE DECK BEAMS (42") ON SPILL THRU PILE BENT ABUTMENTS AND PILE BENT PIERS MEASURING 319'-3 1/4" BK./BK. OF THE ABUTMENTS WITH A 33'-0" CLEAR ROADWAY WIDTH.

APPROVED	2-21 2006
William F. [Signature] WASHINGTON COUNTY ENGINEER	
APPROVED	2-21 2006
Paul [Signature] CLINTON COUNTY ENGINEER	
PASSED	2-24 2006
Jennifer Obertus DISTRICT ENGINEER OF LOCAL ROADS AND STREETS	
APPROVED	2-24 2006
Mary C. Lamie MARY C. LAMIE, P.E. DEPUTY DIRECTOR OF HIGHWAYS REGION FIVE ENGINEER STATE OF ILLINOIS DEPARTMENT OF TRANSPORTATION	



PREPARED BY:
 HENRY, MEISENHEIMER & GENDE, INC.
 1075 LAKE ROAD
 CARLYLE, ILLINOIS 62231
 (618) 594-3711

LARRY D. GOWLER JR.
 REGISTERED PROFESSIONAL ENGINEER IN ILLINOIS, NO. 52900
 DATE: 2/24/06
 REGISTRATION EXPIRES: NOVEMBER 30, 2007

