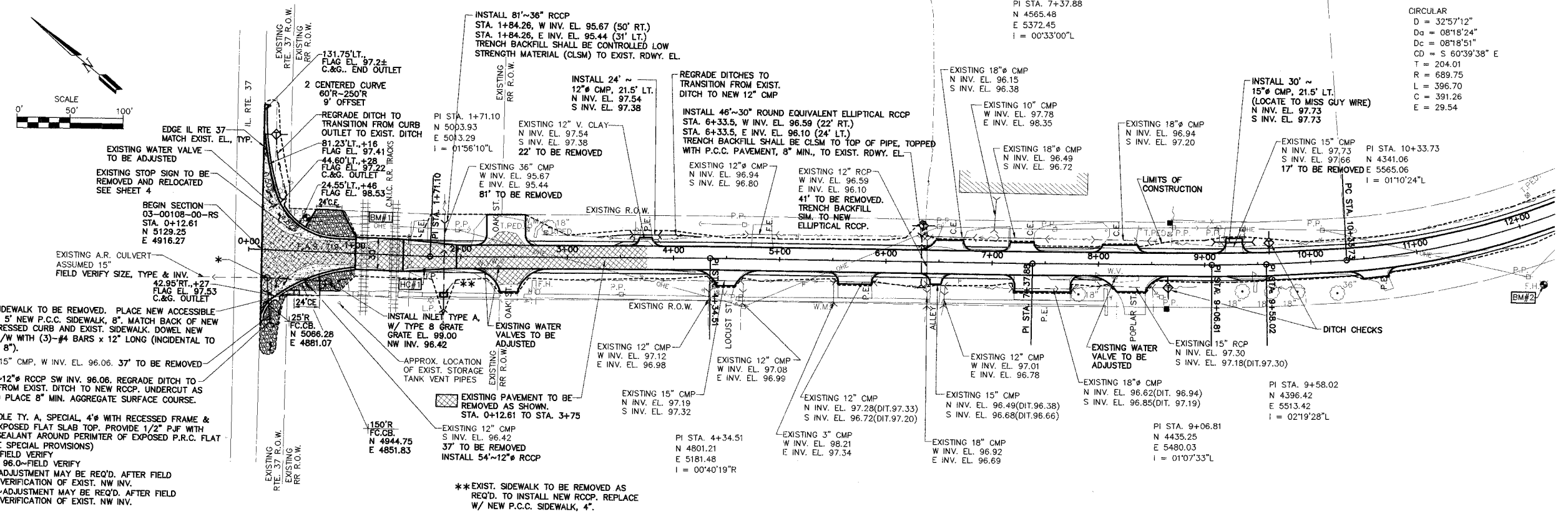


ROUTE NO.	SECTION	COUNTY	TOTAL SHEETS	SHEET NO.
FAS 719	03-00108-00-RS	FAYETTE	49	6
FED. ROAD DIST. NO.	ILLINOIS	PROJECT	CONTRACT NO. 95460	

SEE SHEET 3 FOR ENLARGEMENT OF CONCRETE PAVEMENT AT INTERSECTION OF IL RTE. 37 AND FAS 719.

STA. 0+94 TO STA. 1+52.5, PLACE AGGREGATE SURFACE COURSE TYPE B AT TOP OF 8" OF BACKFILL FROM EDGE OF ROADWAY TO TOE OF SLOPES AT LIMITS OF CONSTRUCTION, TYPICAL ALL 4 QUADRANTS.



21.5' - EXIST. SIDEWALK TO BE REMOVED. PLACE NEW ACCESSIBLE CURB RAMP AND 5' NEW P.C.C. SIDEWALK, 8". MATCH BACK OF NEW ACCESSIBLE DEPRESSED CURB AND EXIST. SIDEWALK. DOWEL NEW S/W TO EXIST. S/W WITH (3)-#4 BARS x 12" LONG (INCIDENTAL TO P.C.C. SIDEWALK, 8").

EXISTING 15" CMP, W INV. EL. 96.06, 37' TO BE REMOVED.

INSTALL 30"~12" RCCP SW INV. EL. 96.06. REGRADE DITCH TO TRANSITION FROM EXIST. DITCH TO NEW RCCP. UNDERCUT AS REQUIRED TO PLACE 8" MIN. AGGREGATE SURFACE COURSE.

*INSTALL MANHOLE TY. A, SPECIAL, 4" WITH RECESSED FRAME & OPEN LID IN EXPOSED FLAT SLAB TOP. PROVIDE 1/2" PJF WITH ELASTOMERIC SEALANT AROUND PERIMETER OF EXPOSED P.R.C. FLAT SLAB TOP (SEE SPECIAL PROVISIONS)

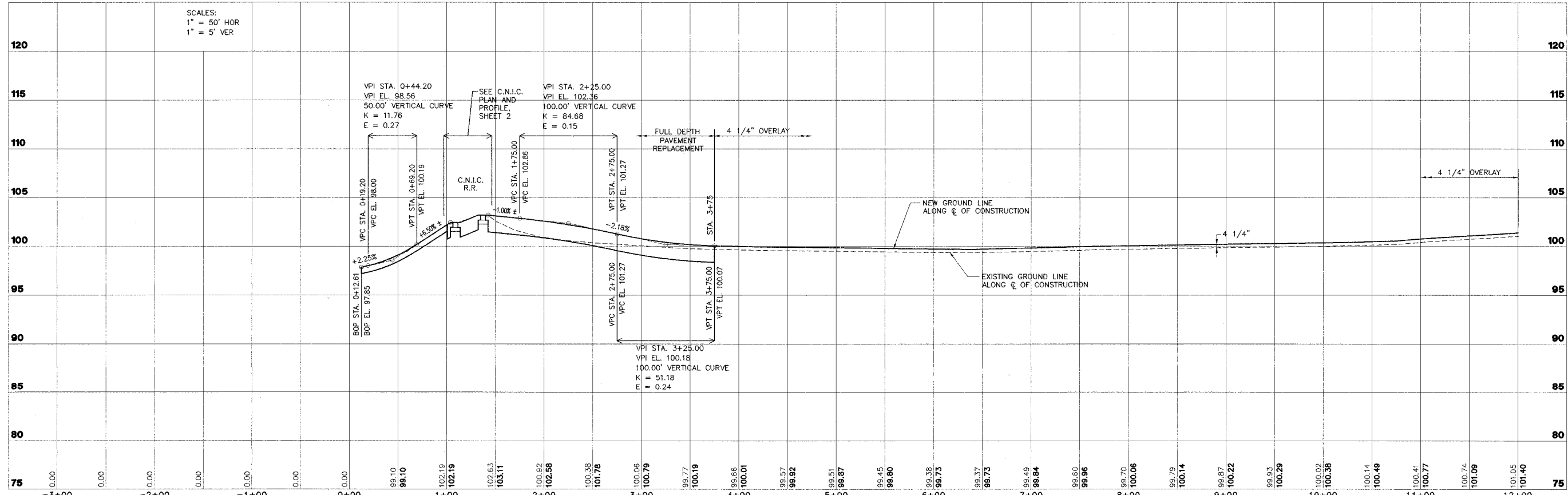
LID EL. 97.85-FIELD VERIFY

EXIST. NW INV. 96.0-FIELD VERIFY

SE INV. 96.18-ADJUSTMENT MAY BE REQ'D. AFTER FIELD VERIFICATION OF EXIST. NW INV.

SW INV. 96.00-ADJUSTMENT MAY BE REQ'D. AFTER FIELD VERIFICATION OF EXIST. NW INV.

**EXIST. SIDEWALK TO BE REMOVED AS REQ'D. TO INSTALL NEW RCCP. REPLACE W/ NEW P.C.C. SIDEWALK, 4".



SCALES:
1" = 50' HOR
1" = 5' VER

<p>STS CONSULTANTS 2524 South Broadway Salem, Illinois 62881 Ph(618)348-3500 Fax(618)348-5246 IL Design Firm Reg. No. 184-001518</p>	<p>ROADWAY RECONSTRUCTION FAS 719 SECTION 03-00108-00-RS FAYETTE COUNTY, ILLINOIS</p>		<p>PLAN AND PROFILE STA. 0+00 TO STA. 12+00</p>		<p>SURVEY JAS DESIGN MRQ DRAWN JSD, BLT</p>	<p>CHECKED APPROVED</p>	<p>DATE 01/09/06 REVISIONS JOB NO. 30084</p>
--	--	--	--	--	---	-----------------------------	--

L:\FAHD00033\EXP\RC\p01001.dwg, 1/17/2006 9:31:23 AM