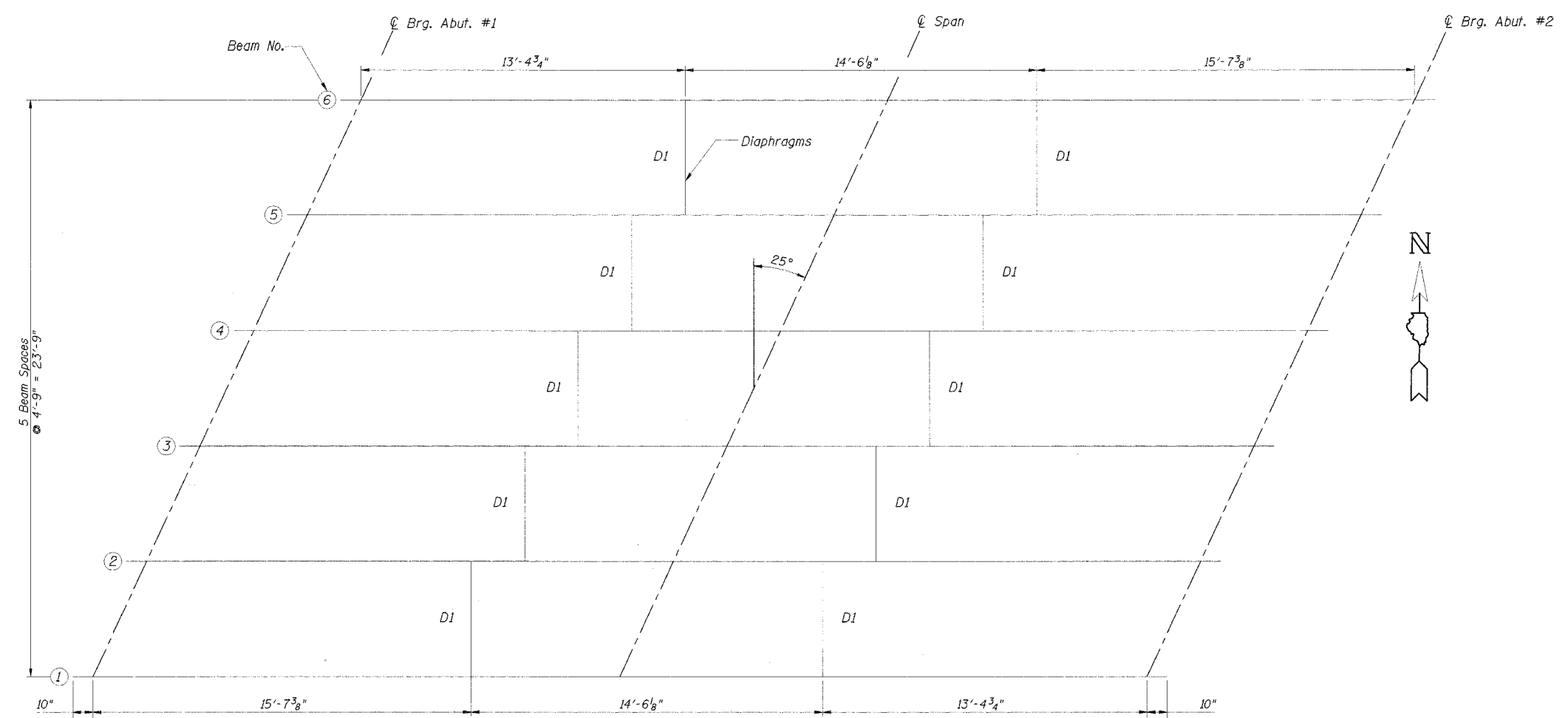
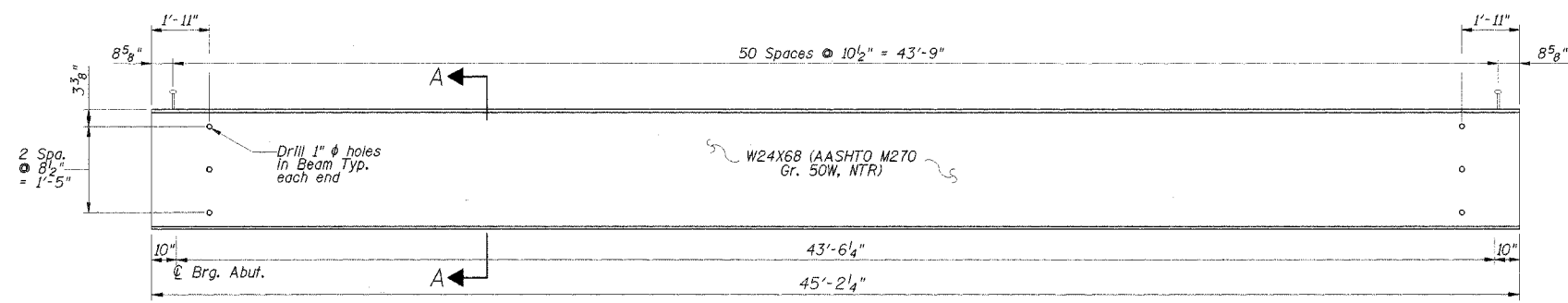


ROUTE NO.	SPECIFICATION	COUNTY	TOTAL SHEETS	SHEET NO.
TR 373	*	Vermilion	19	11
FED. ROAD DIST. NO. 7	ILLINOIS	FED. AID PROJECT		

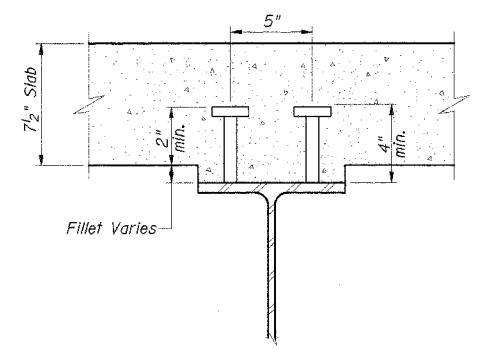
*02-04130-00-BR



FRAMING PLAN



BEAM ELEVATION
(Looking North)



SECTION A-A

TOP OF BEAM ELEVATIONS

Location	Beam 1	Beam 2	Beam 3	Beam 4	Beam 5	Beam 6
℄ Bearing, Abutment #1	100.086	100.185	100.284	100.284	100.185	100.086
℄ Span	99.989	100.113	100.212	100.212	100.113	99.989
℄ Bearing, Abutment #2	100.086	100.185	100.284	100.284	100.185	100.086

* For fabrication only

DSGN	K.J. Hoffmann				
DR	K.J. Hoffmann				
CHK	K.E. Brandau				
APVD	K.E. Brandau	NO.	DATE	REVISION	BY

FRAUENHOFFER
Frauenhoffer and Associates, P.C. Consulting Engineers
3002 Crossing Court Champaign, IL 61822 217-351-6268

STEEL FRAMING DETAILS - SHEET 1 OF 2
CATLIN ROAD DISTRICT
SECTION 02-04130-00-BR
VERMILION COUNTY

SHEET	11
DWG NO.	et1.dgn
DATE	FEB 2006
PROJ NO.	5068