

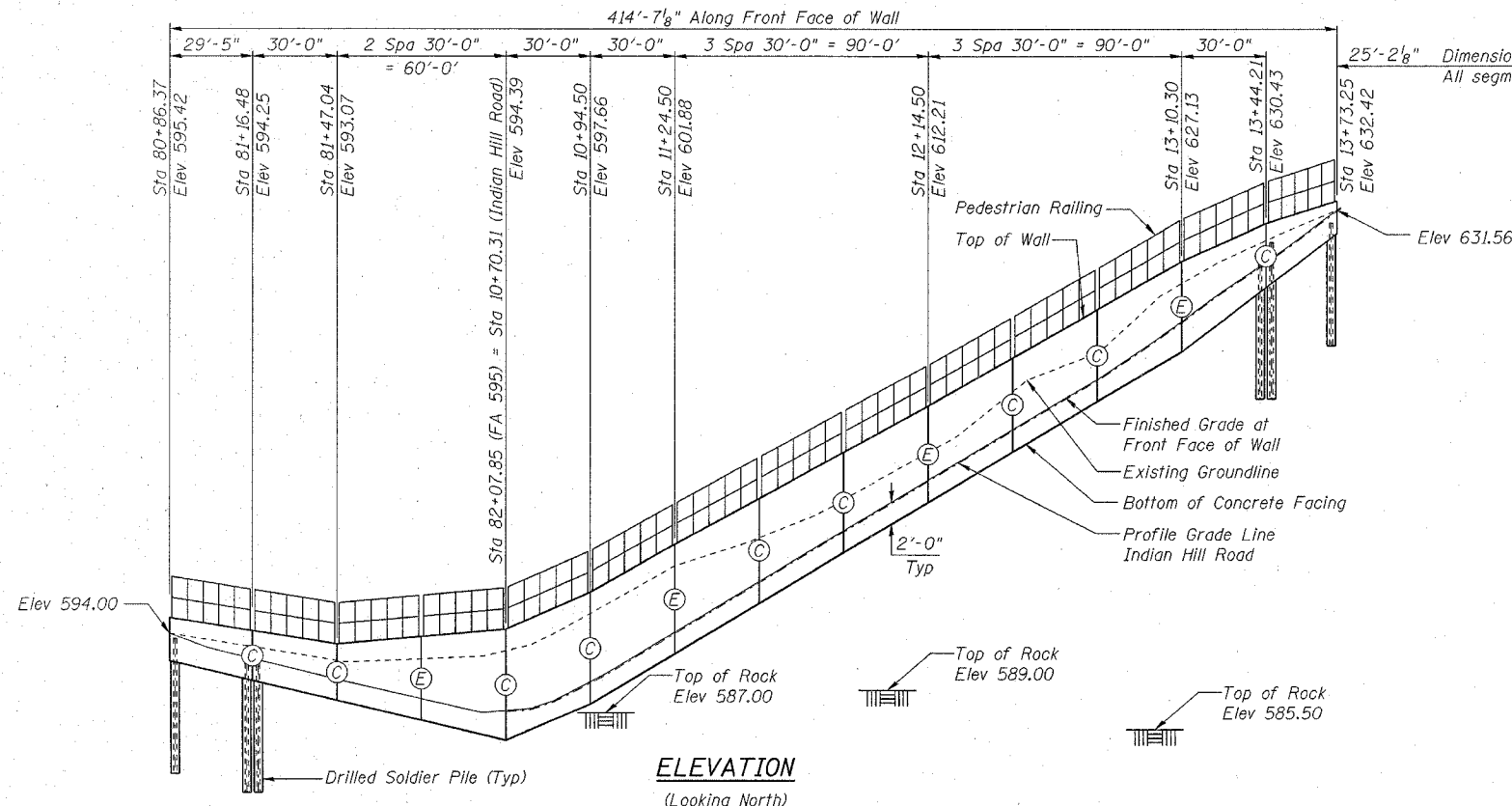
Bench Mark: B.M. Chiseled "□" End of SW Bridge Wingwall at Station 74+71.0, 26' Rt. Elevation = 580.39.
 R.R. Spike in Power Pole at Station 82+56.00, 44.5' Rt. Elevation = 580.37.
 B.M. "X" Spikes in Power Pole at Station 92+34.00, 59.5' Rt. Elevation = 577.08.

STATE OF ILLINOIS
 DEPARTMENT OF TRANSPORTATION

ROUTE NO.	SECTION	COUNTY	TOTAL SHEETS	SHEET NO.	SHEET NO. 1
595	1-1	ROCK ISLAND	239	145	13 SHEETS
FED. ROAD DIST. NO. 2		ILLINOIS	FED. AID PROJECT		
Contract No. 84986					

Existing Structure: None

Elev 635.00
Elev 630.00
Elev 625.00
Elev 620.00
Elev 615.00
Elev 610.00
Elev 605.00
Elev 600.00
Elev 595.00
Elev 590.00
Elev 585.00
Elev 580.00
Elev 575.00



ELEVATION
 (Looking North)
 (Stations and Elevations shown are at vertical kink points along the Front Face Top of Wall)

CURVE 1210 DATA

☉ FA 595 (Route 5)
 PI Sta = 82+57.71
 $\Delta = 20^\circ 08' 57''$ (Lt)
 $D = 2^\circ 00' 01''$
 $R = 2,864.59'$
 $T = 508.95'$
 $L = 1,007.39'$
 $E = 44.86'$
 $S.E. = N.C.$
 PC Sta = 77+48.76
 PT Sta = 87+56.15

CURVE IHRPE-1 DATA

☉ Indian Hill Road Private Entrance
 PI Sta = 29+18.50
 $\Delta = 13^\circ 37' 40''$ (Lt)
 $D = 20^\circ 00' 00''$
 $R = 286.48'$
 $T = 34.23'$
 $L = 68.14'$
 $E = 2.04'$
 PC Sta = 28+84.26
 PT Sta = 29+52.40

CURVE INDIAN 3-1 DATA

☉ Indian Hill Road
 PI Sta = 10+70.59
 $\Delta = 45^\circ 07' 24''$ (Rt)
 $D = 190^\circ 59' 09''$
 $R = 30.00'$
 $T = 12.46'$
 $L = 23.63'$
 $E = 2.49'$
 PC Sta = 10+58.13
 PT Sta = 10+81.75

CURVE INDIAN 3-2 DATA

☉ Indian Hill Road
 PI Sta = 13+27.38
 $\Delta = 58^\circ 06' 54''$ (Lt)
 $D = 57^\circ 17' 45''$
 $R = 100.00'$
 $T = 55.56'$
 $L = 101.43'$
 $E = 14.40'$
 PC Sta = 12+71.82
 PT Sta = 13+73.25

HIGHWAY CLASSIFICATION

INDIAN HILL ROAD
 Functional Class: Dead End Service Rd Servicing 2 Private Residences
 ADT: N/A
 DHV: N/A
 Design Speed: N/A
 Posted Speed: N/A

DESIGN SPECIFICATIONS

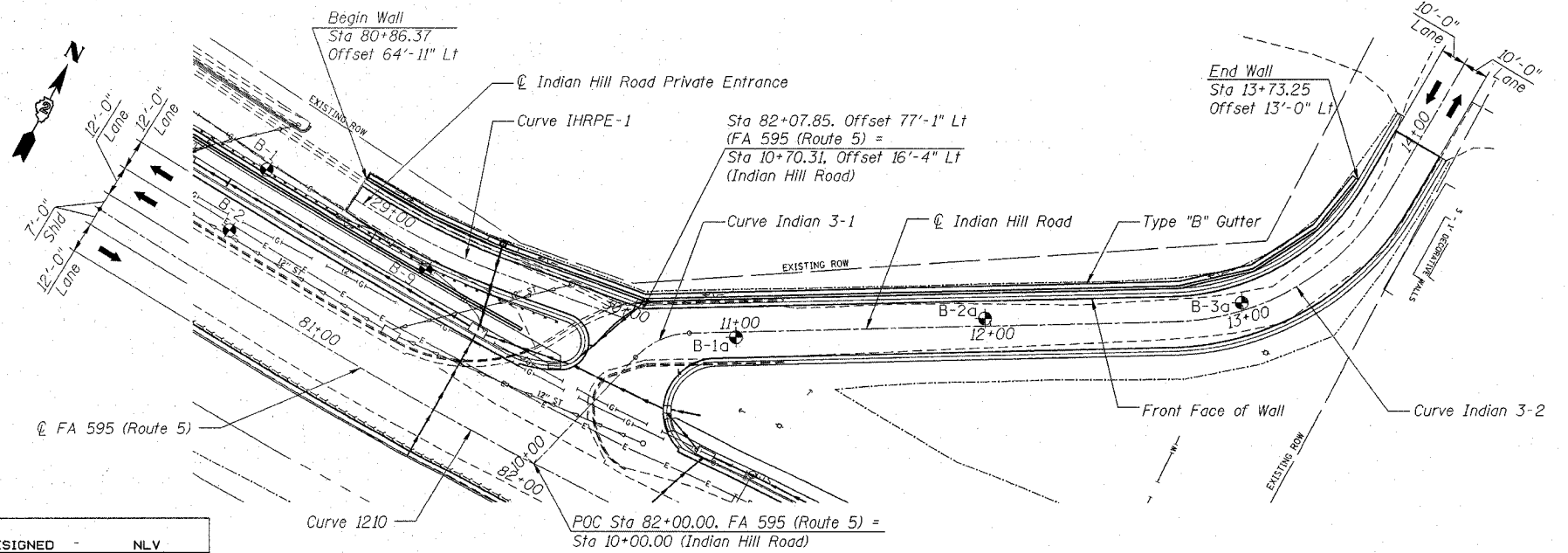
2002 AASHTO Standard Specifications for Highway Bridges

DESIGN STRESSES

FIELD UNITS
 $f'_c = 3,500$ psi (Cast-in-Place Wall Facing)
 $f'_c = 4,000$ psi (Soldier Pile Encasement Concrete)
 $f_y = 60,000$ psi (Reinforcement)
 $f_y = 50,000$ psi (Structural Steel)

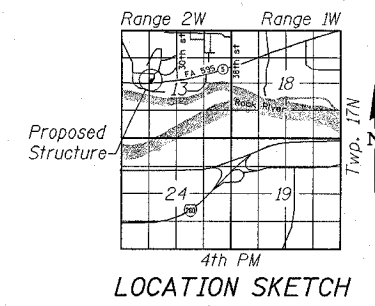
LEGEND

- ☉ Construction Joint
- ⓔ Expansion Joint
- Existing Electric
- 10" F.M. SAN. S. Existing 10" Forced Main Sanitary Sewer
- 12" Existing 12" Gas
- 8" Existing 8" Gas
- Existing Property Line
- 12" ST Existing 12" Storm
- B-4 Soil Boring Location
- Existing Watermain
- Proposed Storm Sewer



PLAN

DESIGNED	NLV
CHECKED	DSE
DRAWN	RD
CHECKED	DSE
DATE	JAN 31, 2006



Illinois Firm Registration No. 84-00533

8501 West Higgins Road, Suite 730, Chicago, Illinois 60631-2801
 www.stanleygroup.com

GENERAL PLAN
 RETAINING WALL F ALONG
 INDIAN HILL ROAD
 FA 595 (IL ROUTE 5) SECTION 1-1
 ROCK ISLAND COUNTY
 STA 80+86.37 TO STA 13+73.25