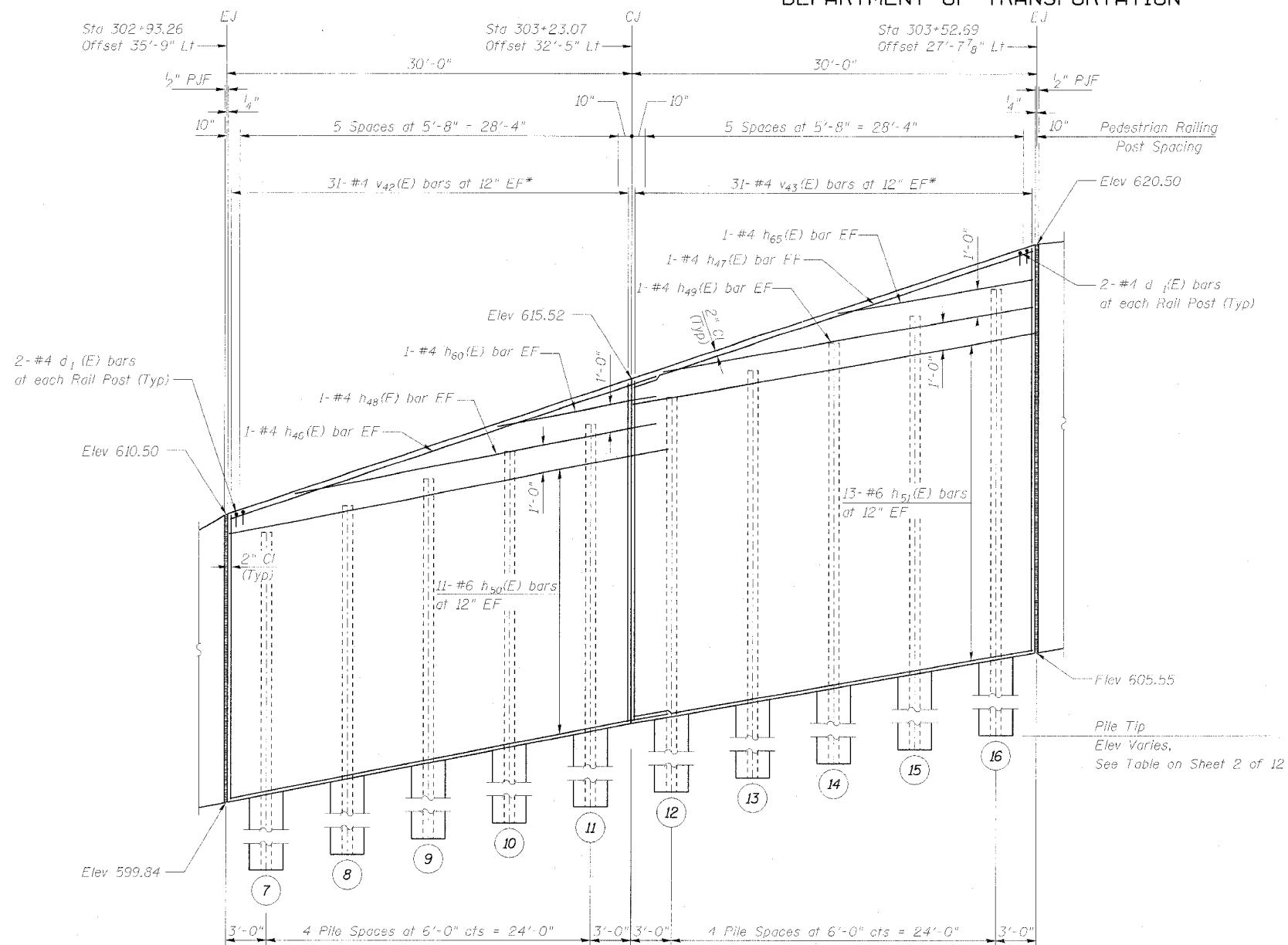


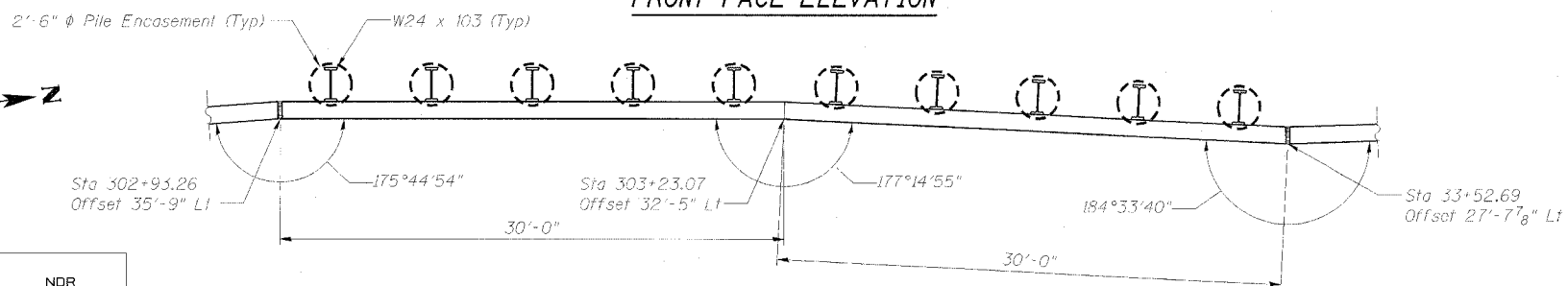
STATE OF ILLINOIS
DEPARTMENT OF TRANSPORTATION

PROJECT NO.	SECTION	COUNTY	SHEET NO.	TOTAL SHEETS
595	I-1	ROCK ISLAND	239	137
FED. ROAD DIST. NO. 2		BLANKS	REG. NO. PROJECT	
Contract No. 84986				

SHEET NO. 5
12 SHEETS



FRONT FACE ELEVATION



PLAN

BILL OF MATERIAL

Bar	No.	Size	Length	Shape
d1 (E)	24	#4	2'-0"	U
h46(E)	2	#4	32'-2"	—
h47(E)	2	#4	30'-8"	—
h48(E)	2	#4	21'-4"	—
h49(E)	2	#4	29'-11"	—
h50(E)	22	#6	32'-9"	—
h51(E)	26	#6	29'-9"	—
h60(E)	2	#4	6'-9"	—
h65(E)	2	#4	7'-4"	—
v42(E)	31	#4	22'-8"	—
v43(E)	31	#4	27'-1"	—
Structure Excavation		Cu Yd	52.3	
Concrete Structures		Cu Yd	28.4	
Reinforcement Bars, Epoxy Coated		Pound	3480	

Reinforcement bars designated (E) shall be epoxy coated.

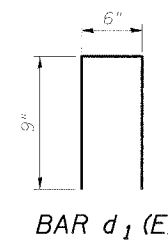
See Sheet 2 of 12 for Expansion Joint and Water Seal Placement Detail.

See Sheet 7 of 12 for Pedestrian Railing Details.

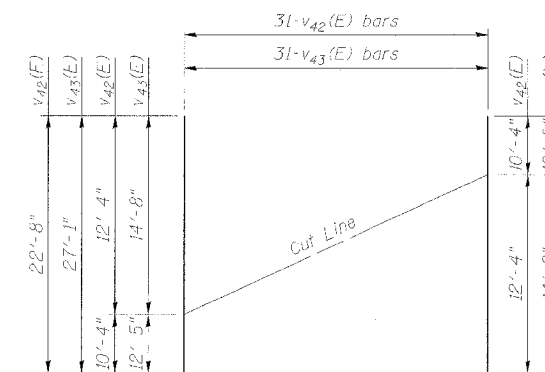
See Sheet 3 of 12 for Retaining Wall, Typical Section and Underdrain Details.

Min Lap Length: #4 bar = 1'-8"
#6 bar = 2'-7"

* See Field Cutting Diagram



BAR d1 (E)



FIELD CUTTING DIAGRAM

Order bars full length. Cut to fit as shown and place at one end of the dimension line shown on the plan. Use remainder of bars at opposite end of the dimension line on the opposite face of the Retaining Wall.

Illinois Firm Registration No. 084-00533



WALL PLAN AND ELEVATION
RETAINING WALL E ALONG
30TH STREET
FA 595 (IL ROUTE 5) SECTION I-1
ROCK ISLAND COUNTY
STA 302+50.00 TO STA 304+10.00
STRUCTURE NO. 081-W007

DESIGNED	NDR
CHECKED	DSE
DRAWN	RTT
CHECKED	DSE
DATE	JAN 31, 2006