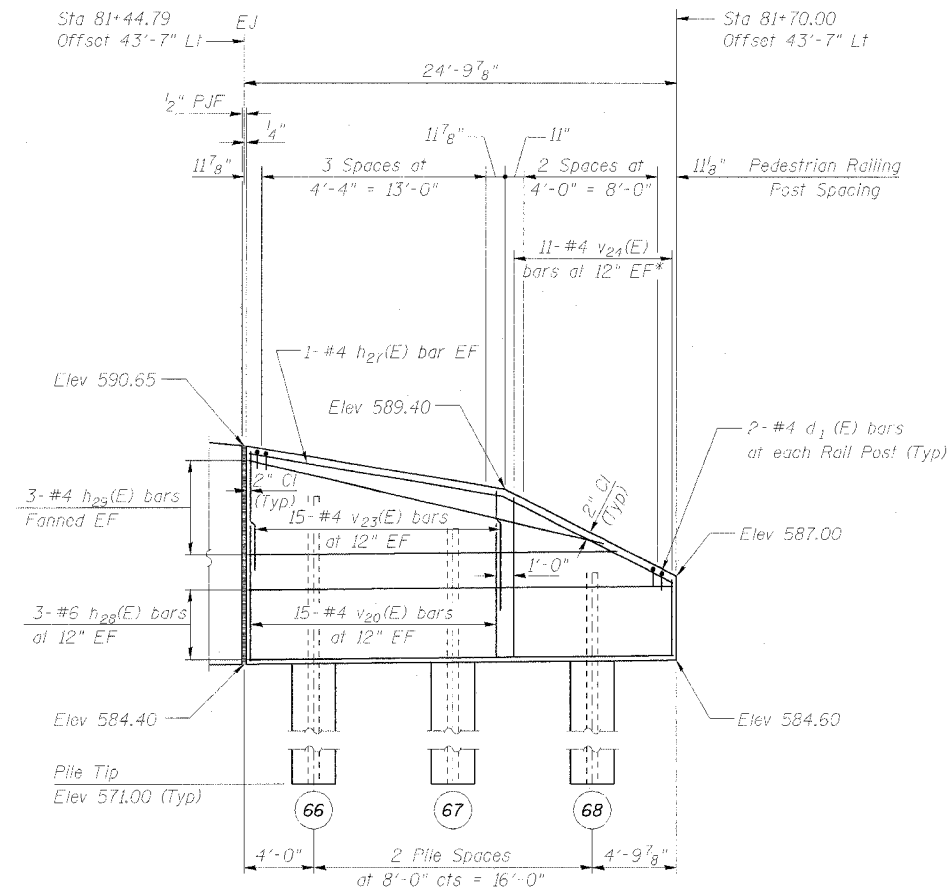


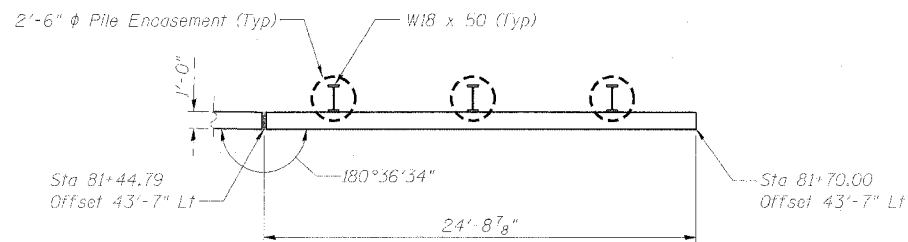
STATE OF ILLINOIS  
DEPARTMENT OF TRANSPORTATION

ROUTE NO.	SECTION	COUNTY	SHEET NO.	SHEET NO.
595	1-1	ROCK ISLAND	239	125

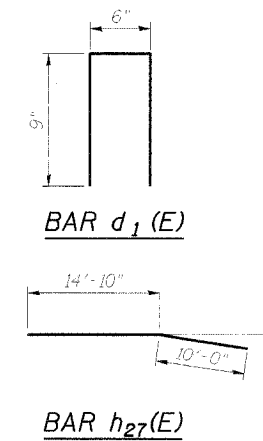
18 SHEETS



**FRONT FACE ELEVATION**



**PLAN**



**BILL OF MATERIAL**

Bar	No.	Size	Length	Shape
d1 (E)	12	#4	2'-0"	Π
h27(E)	2	#4	24'-10"	—
h28(E)	6	#6	24'-4"	—
h29(E)	6	#4	24'-9"	—
v20(E)	30	#4	4'-0"	—
v23(E)	30	#4	3'-8"	—
v24(E)	11	#4	6'-8"	—
Structure Excavation		Cu Yd	16.5	
Concrete Structures		Cu Yd	4.5	
Reinforcement Bars		Pound	570	

Reinforcement bars designated (E) shall be epoxy coated.

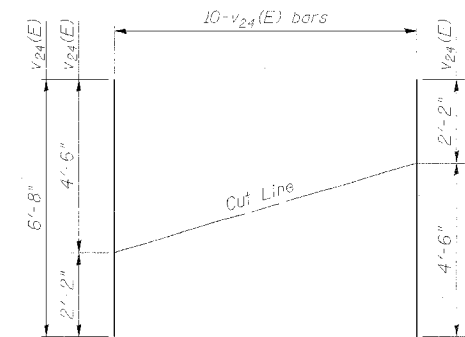
See Sheet 2 of 18 for Expansion Joint and Water Seal Placement Detail.

See Sheet 12 of 18 for Pedestrian Railing Details.

See Sheet 3 of 18 for Retaining Wall, Typical Section and Underdrain Details.

Min Lap Length: #4 bar = 1'-8"  
#6 bar = 2'-7"

\* See Field Cutting Diagram



**FIELD CUTTING DIAGRAM**

Order bars full length. Cut to fit as shown and place at one end of the dimension line shown on the plan. Use remainder of bars at opposite end of the dimension line on the opposite face of the Retaining Wall.

Illinois Firm Registration No. 84-00533



**WALL PLAN AND ELEVATION  
RETAINING WALL D ALONG  
IL ROUTE 5  
FA 595 (IL ROUTE 5) SECTION 1-1  
ROCK ISLAND COUNTY  
STA 76+50.00 TO STA 81+70.00  
STRUCTURE NO. 081-W006**

DESIGNED	NDR
CHECKED	DSE
DRAWN	RTT
CHECKED	DSE
DATE	JAN 31, 2006