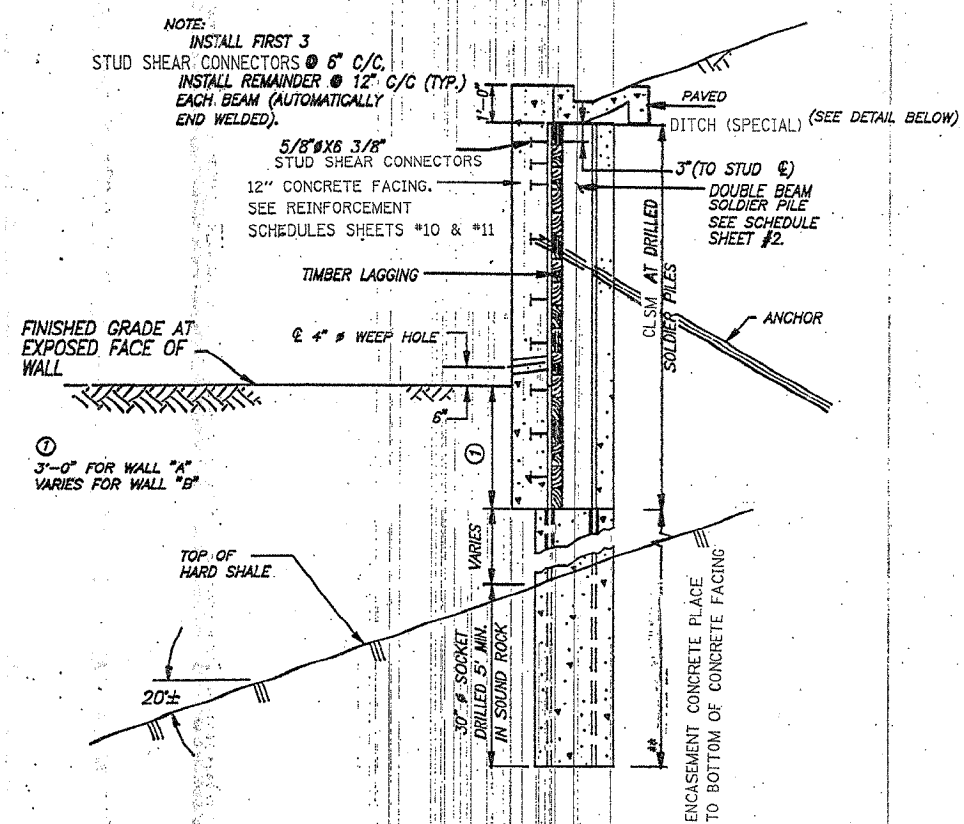


FED. AID RT. NO.	SECTION	COUNTY	TOTAL SHEETS	SHEET NO.
F.A.P. 595	1-1	ROCK ISLAND	229	105

FED. ROAD DIST. NO. 7 ILLINOIS PROJECT

SHEET 6 OF 15



TYPICAL WALL SECTION

NOTE:
INSTALL FIRST 3 STUD SHEAR CONNECTORS @ 6" C/C.
INSTALL REMAINDER @ 12" C/C (TYP.) EACH BEAM (AUTOMATICALLY END WELDED).

5/8" x 3/8" STUD SHEAR CONNECTORS
12" CONCRETE FACING. SEE REINFORCEMENT SCHEDULES SHEETS #10 & #11

TIMBER LAGGING

CLSM AT DRILLED SOLDIER PILES

DOUBLE BEAM SOLDIER PILE SEE SCHEDULE SHEET #2

ANCHOR

ENCASEMENT CONCRETE PLACE TO BOTTOM OF CONCRETE FACING

30" SOCKET DRILLED 5' MIN. IN SOUND ROCK

VARIES

20±

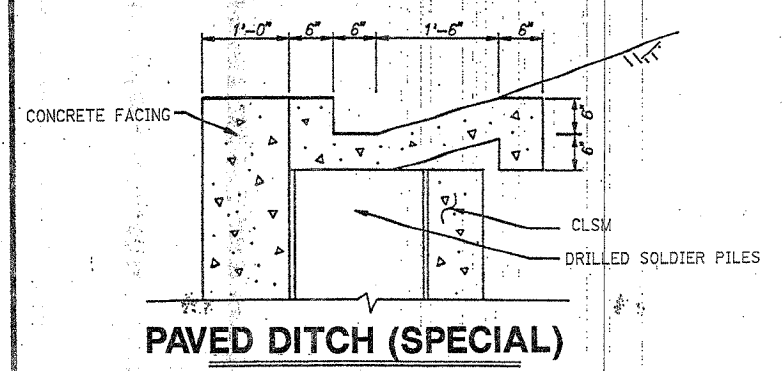
3'-0" FOR WALL "A" VARIES FOR WALL "B"

** THE COST OF ENCASEMENT CONCRETE IS INCLUDED IN "DRILLING AND SETTING SOLDIER PILES IN ROCK."

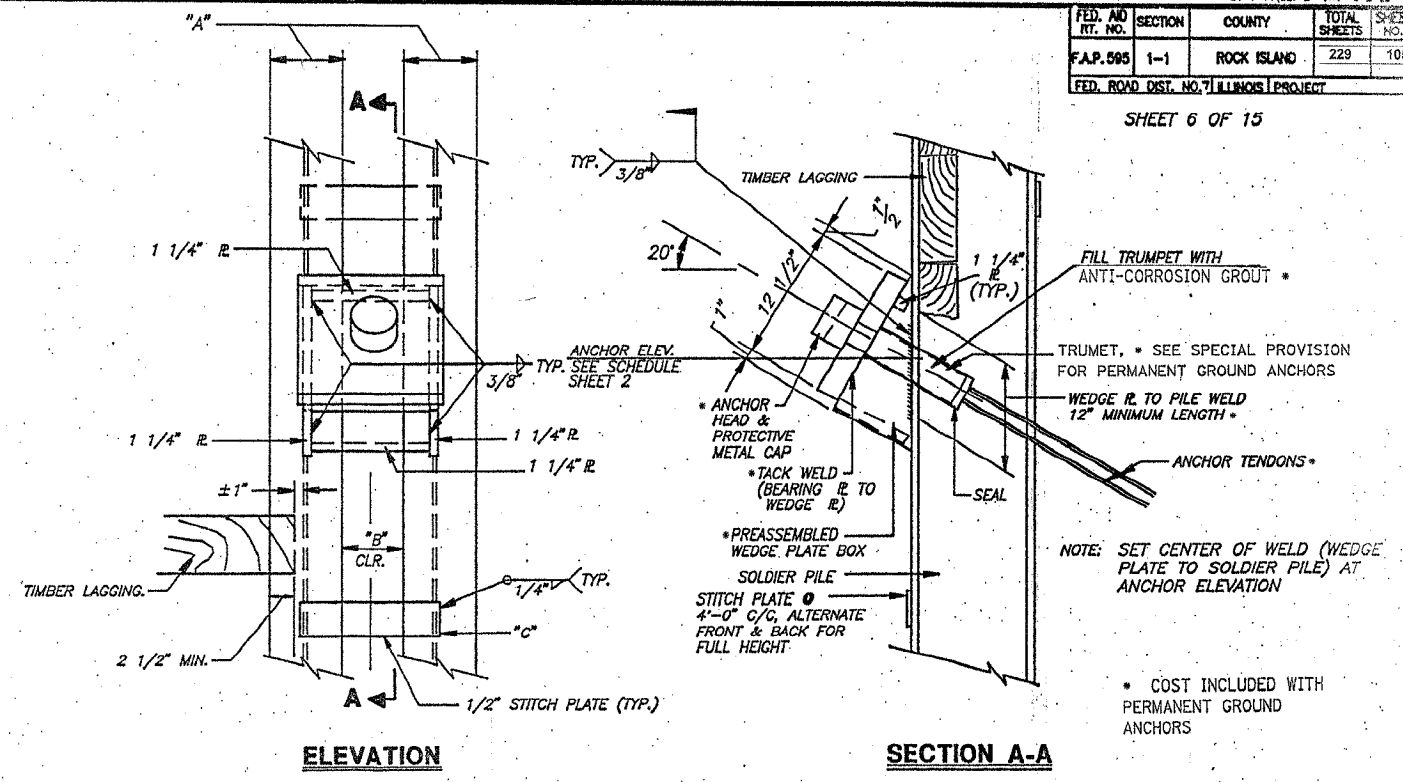
WALL "A" PILES #2 - #4 & #15 - #16
WALL "B" PILES #2 - #18

DOUBLE BEAM SOLDIER PILE	"A"	"B"	"C"
W14x30	6 3/4"	6"	6" x 1/2" x 1'-3"
W14x38	6 3/4"	6"	6" x 1/2" x 1'-3"
W14x48	8"	6"	6" x 1/2" x 1'-3"

DIMENSIONS A, B & C



PAVED DITCH (SPECIAL)



ELEVATION

SECTION A-A

ANCHOR DETAILS

TYP. 3/8"

TIMBER LAGGING

20°

1 1/4" R.

1 1/4" R.

1 1/4" R.

1 1/4" R.

1 1/4" R.

±1"

ANCHOR ELEV. TYP. SEE SCHEDULE SHEET 2

3/8"

1 1/4" R.

1 1/4" R.

1 1/4" R.

1 1/4" R.

1 1/4" R.

2 1/2" MIN.

1/2" STITCH PLATE (TYP.)

ANCHOR HEAD & PROTECTIVE METAL CAP

TACK WELD (BEARING R TO WEDGE R)

PREASSEMBLED WEDGE PLATE BOX

SOLDIER PILE

STITCH PLATE @ 4'-0" C/C, ALTERNATE FRONT & BACK FOR FULL HEIGHT

FILL TRUMPET WITH ANTI-CORROSION GROUT *

TRUMPET, * SEE SPECIAL PROVISION FOR PERMANENT GROUND ANCHORS

WEDGE R TO PILE WELD 12" MINIMUM LENGTH *

ANCHOR TENDONS *

SEAL

NOTE: SET CENTER OF WELD (WEDGE PLATE TO SOLDIER PILE) AT ANCHOR ELEVATION

* COST INCLUDED WITH PERMANENT GROUND ANCHORS

NOTES

THE TIMBER LAGGING SHALL BE INSTALLED AS EARTH EXCAVATION PROCEEDS DOWN THE WALL.

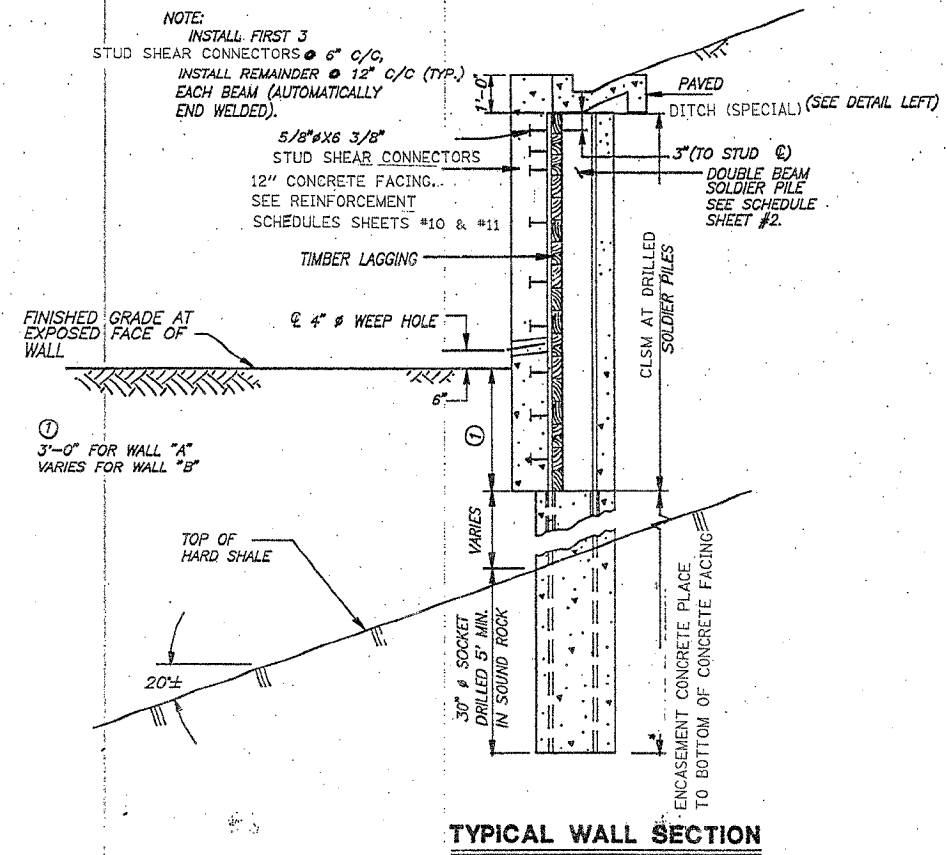
SOLDIER PILES SHALL CONSIST OF 2 WIDE FLANGE BEAMS AND STITCH PLATES AT THE SIZE AND SPACING SHOWN. STEEL FOR SOLDIER PILES SHALL BE AASHTO M270 GRADE 50. SEE SCHEDULES, SHEET #2. FLANGE BEAMS AND 1/2" STITCH PLATES SHALL BE PAID FOR AS "FURNISHING SOLDIER PILES".

COST OF FURNISHING, FABRICATING, AND ATTACHING ALL STRUCTURAL STEEL TO THE PILES IS INCIDENTAL TO "FURNISHING SOLDIER PILES".

THE COST OF CLSM IS INCLUDED IN "DRILLING AND SETTING SOLDIER PILES IN ROCK."

PERMANENT GROUND ANCHORS SHALL HAVE NON-GALVANIZED HIGH STRENGTH, STRESS-RELIEVED 7-WIRE STRANDS, GRADE 270. THE NOMINAL DIAMETER OF THE STRANDS SHALL BE 0.6" AND THE NOMINAL CROSS-SECTION AREA SHALL BE 0.217 SQ.IN.

DETAILS FOR THE ANCHOR BLOCKS AND ANCHOR PLATES SHALL BE SUBMITTED BY THE CONTRACTOR FOR THE ENGINEER'S APPROVAL COST INCLUDED IN "PERMANENT GROUND ANCHORS."



TYPICAL WALL SECTION

WALL "A" PILES #1 & #17
WALL "B" PILE #1

TYPICAL WALL SECTIONS AND DETAILS
RETAINING WALL "A" & "B"
F.A. RTE. 595 SECTION 1-1
ROCK ISLAND COUNTY