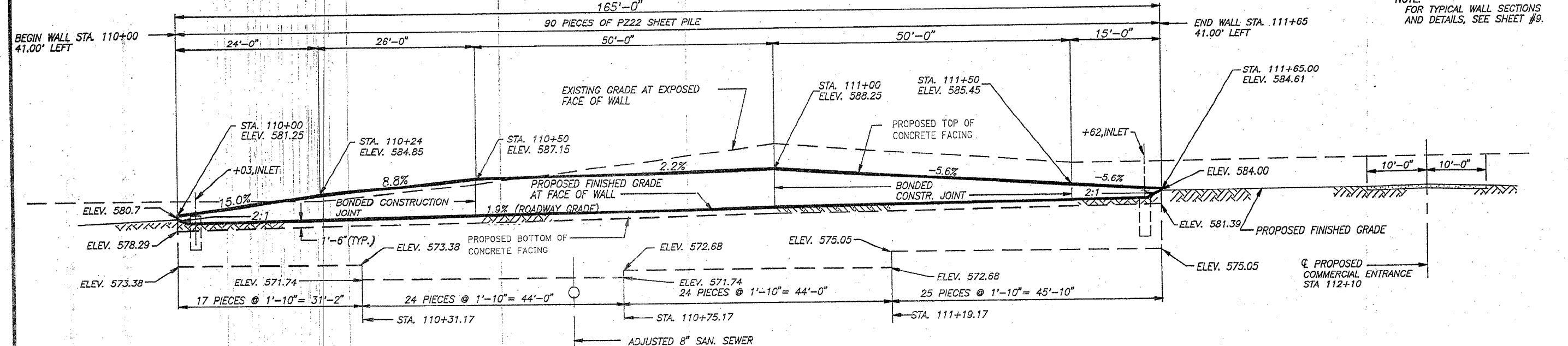


PLAN
① SLOPE = 3/4" / FT.



NOTE:
FOR TYPICAL WALL SECTIONS
AND DETAILS, SEE SHEET #9.

ELEVATION

WALL PLAN AND ELEVATION
RETAINING WALL "C"
F.A. RTE. 595 SECTION 1-1
ROCK ISLAND COUNTY