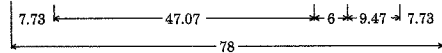


F.A. RTE.	SECTION	COUNTY	TOTAL SHEETS	SHEET NO.
595	1-1	ROCKISLAND	239	97
STA.	TO STA.			
FED. ROAD DIST. NO.	ILLINOIS	FED. AID PROJECT		
CONTRACT # 84986				

# BLACKHAWK RD

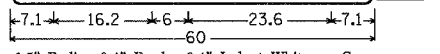


1.50" Radius, 0.38" Border, 0.38" Indent, White on Green;  
[BLACKHAWK RD] D;

Table of widths and spaces.

7.73	B	4.04	L	3.66	A	0.37	5.02	1.12	C	4.03	K	4.13	H	4.03	1.13	A	5.01	0.38	W	5.25	1.12	K	4.13
	R	4.08	D	4.04	7.73	2 REQUIRED																	

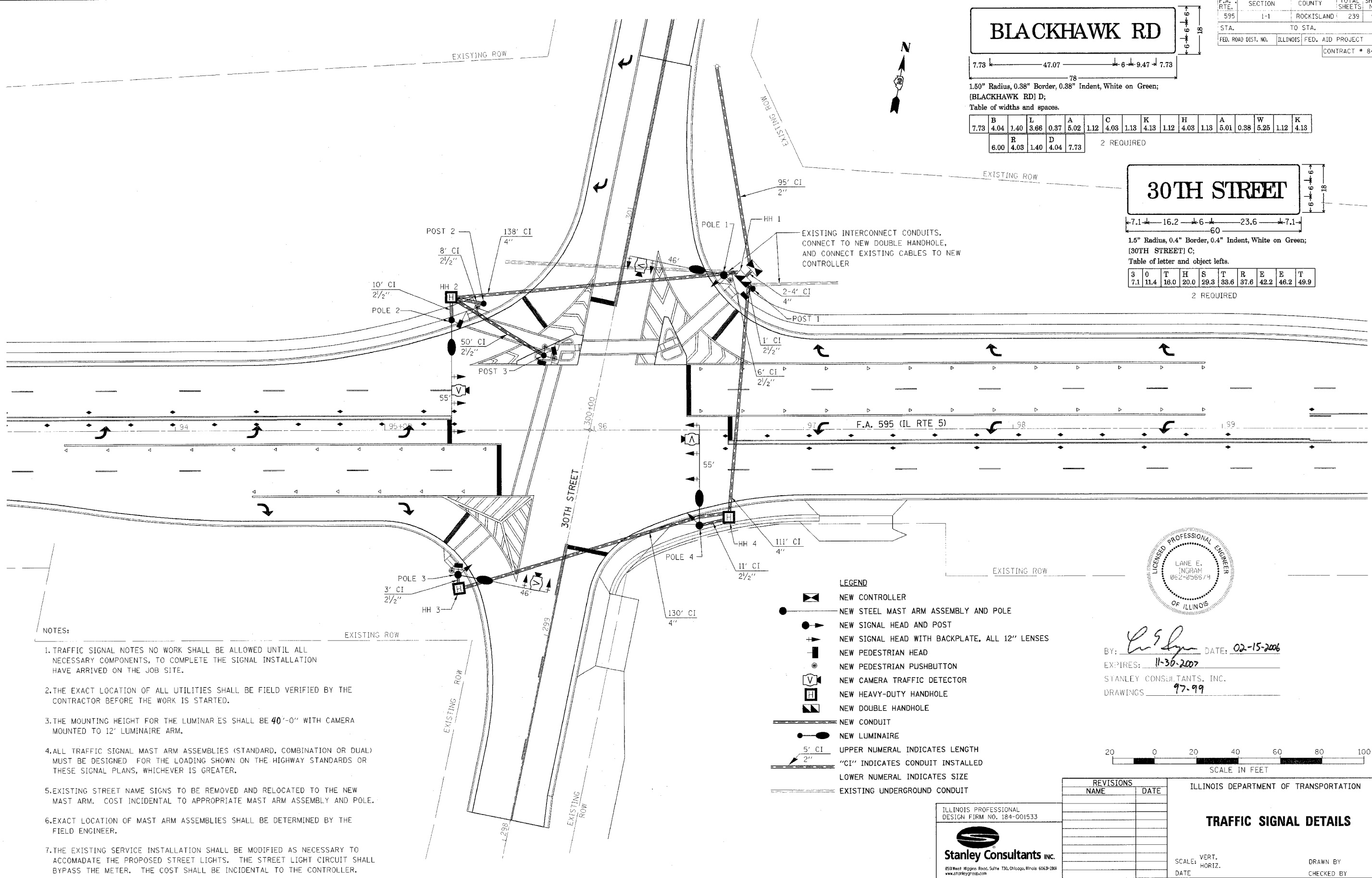
# 30TH STREET



1.5" Radius, 0.4" Border, 0.4" Indent, White on Green;  
[30TH STREET] C;

Table of letter and object lefts.

3	0	T	H	S	T	R	E	E	T
7.1	11.4	18.0	20.0	29.3	38.6	37.6	42.2	46.2	49.9
2 REQUIRED									

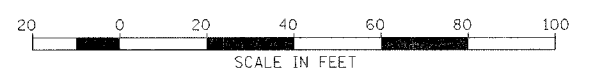


- NOTES:
- TRAFFIC SIGNAL NOTES NO WORK SHALL BE ALLOWED UNTIL ALL NECESSARY COMPONENTS, TO COMPLETE THE SIGNAL INSTALLATION HAVE ARRIVED ON THE JOB SITE.
  - THE EXACT LOCATION OF ALL UTILITIES SHALL BE FIELD VERIFIED BY THE CONTRACTOR BEFORE THE WORK IS STARTED.
  - THE MOUNTING HEIGHT FOR THE LUMINAIRES SHALL BE 40'-0" WITH CAMERA MOUNTED TO 12' LUMINAIRE ARM.
  - ALL TRAFFIC SIGNAL MAST ARM ASSEMBLIES (STANDARD, COMBINATION OR DUAL) MUST BE DESIGNED FOR THE LOADING SHOWN ON THE HIGHWAY STANDARDS OR THESE SIGNAL PLANS, WHICHEVER IS GREATER.
  - EXISTING STREET NAME SIGNS TO BE REMOVED AND RELOCATED TO THE NEW MAST ARM. COST INCIDENTAL TO APPROPRIATE MAST ARM ASSEMBLY AND POLE.
  - EXACT LOCATION OF MAST ARM ASSEMBLIES SHALL BE DETERMINED BY THE FIELD ENGINEER.
  - THE EXISTING SERVICE INSTALLATION SHALL BE MODIFIED AS NECESSARY TO ACCOMMODATE THE PROPOSED STREET LIGHTS. THE STREET LIGHT CIRCUIT SHALL BYPASS THE METER. THE COST SHALL BE INCIDENTAL TO THE CONTROLLER.

- LEGEND
- NEW CONTROLLER
  - NEW STEEL MAST ARM ASSEMBLY AND POLE
  - NEW SIGNAL HEAD AND POST
  - NEW SIGNAL HEAD WITH BACKPLATE, ALL 12" LENSES
  - NEW PEDESTRIAN HEAD
  - NEW PEDESTRIAN PUSHBUTTON
  - NEW CAMERA TRAFFIC DETECTOR
  - NEW HEAVY-DUTY HANDHOLE
  - NEW DOUBLE HANDHOLE
  - NEW CONDUIT
  - NEW LUMINAIRE
  - UPPER NUMERAL INDICATES LENGTH
  - "CI" INDICATES CONDUIT INSTALLED
  - LOWER NUMERAL INDICATES SIZE
  - EXISTING UNDERGROUND CONDUIT



BY: *Lane E. Ingram* DATE: 02-15-2006  
 EXPIRES: 11-30-2007  
 STANLEY CONSULTANTS, INC.  
 DRAWINGS: 97-99



ILLINOIS PROFESSIONAL DESIGN FIRM NO. 184-001533

Stanley Consultants Inc.  
 850 West Higgins Road, Suite 130, Chicago, Illinois 60639-2801  
 www.stanleygroup.com

REVISIONS	
NAME	DATE

ILLINOIS DEPARTMENT OF TRANSPORTATION

## TRAFFIC SIGNAL DETAILS

SCALE: VERT. \_\_\_\_\_  
 HORIZ. \_\_\_\_\_  
 DATE \_\_\_\_\_

DRAWN BY \_\_\_\_\_  
 CHECKED BY \_\_\_\_\_