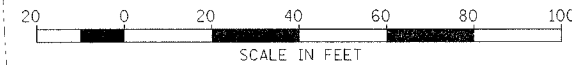
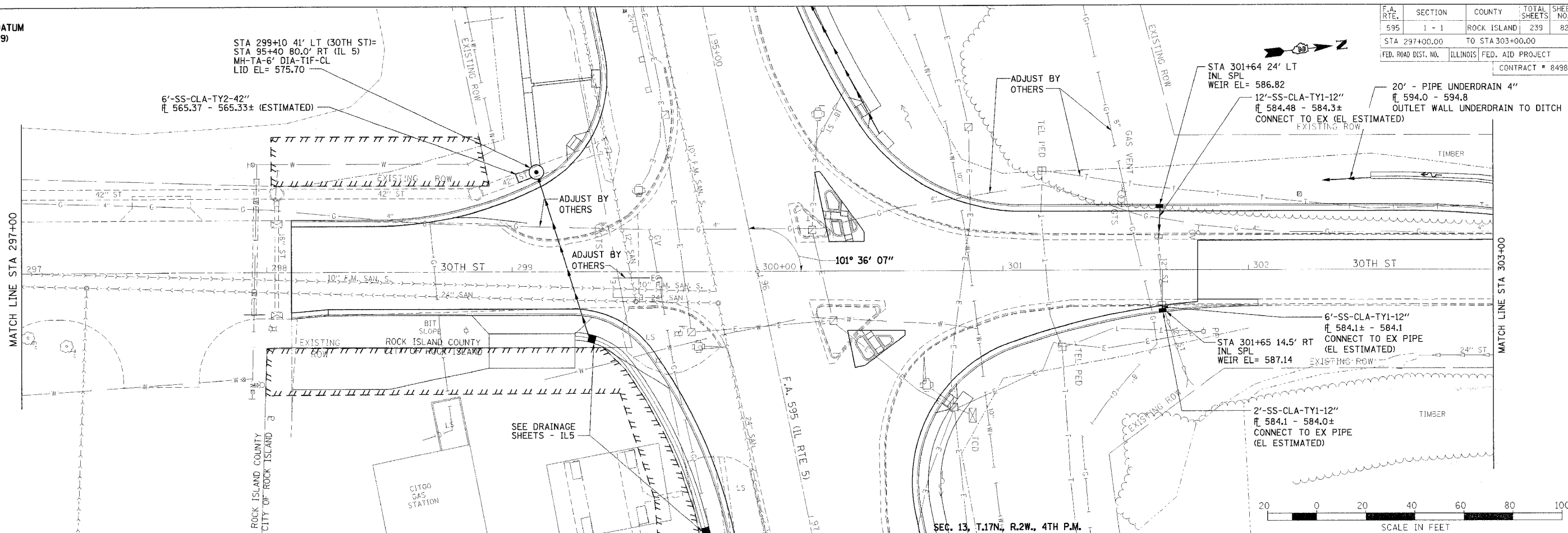


U.S. G.S. DATUM
5TH GA(1929)

STA 299+10 41' LT (30TH ST)=
STA 95+40 80.0' RT (IL 5)
MH-TA-6' DIA-TIF-CL
LID EL= 575.70

6'-SS-CLA-TY2-42"
E 565.37 - 565.33± (ESTIMATED)

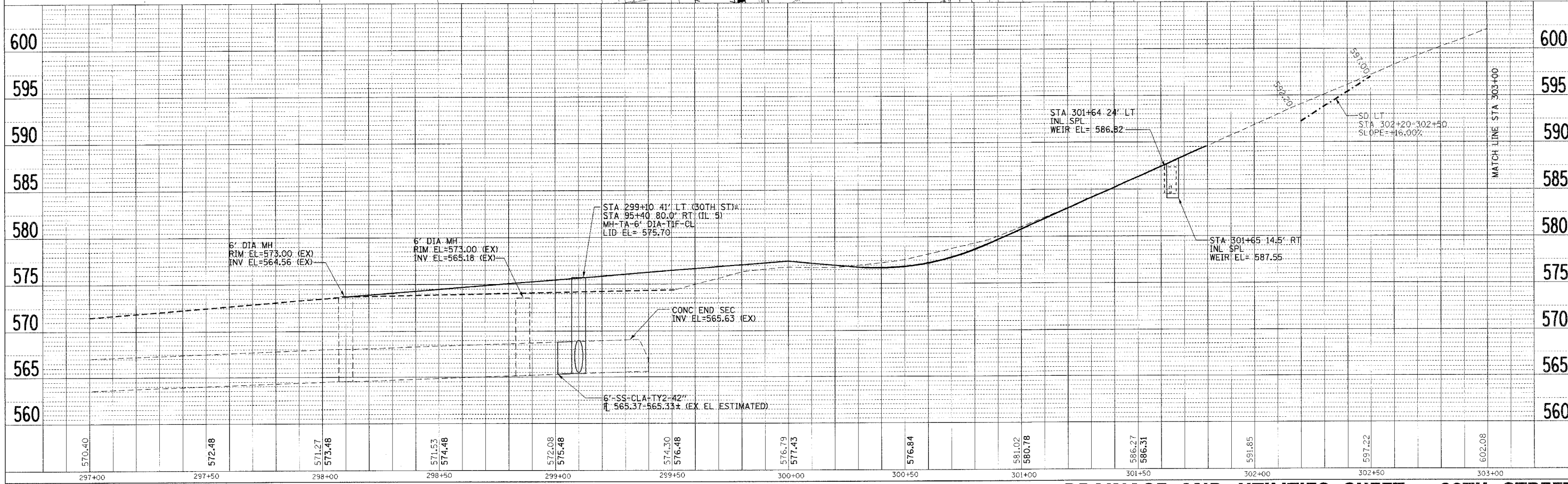
F.A. RTE.	SECTION	COUNTY	TOTAL SHEETS	SHEET NO.
595	1 - 1	ROCK ISLAND	239	82
STA 297+00.00		TO STA 303+00.00		
FED. ROAD DIST. NO.		ILLINOIS	FED. AID PROJECT	
CONTRACT # 84986				



SEC. 13, T.17N., R.2W., 4TH P.M.

PLAN	DATE
BY	
CHECKED	
DATE	

PROF. FILE	DATE
BY	
CHECKED	
DATE	



DRAINAGE AND UTILITIES SHEET - 30TH STREET