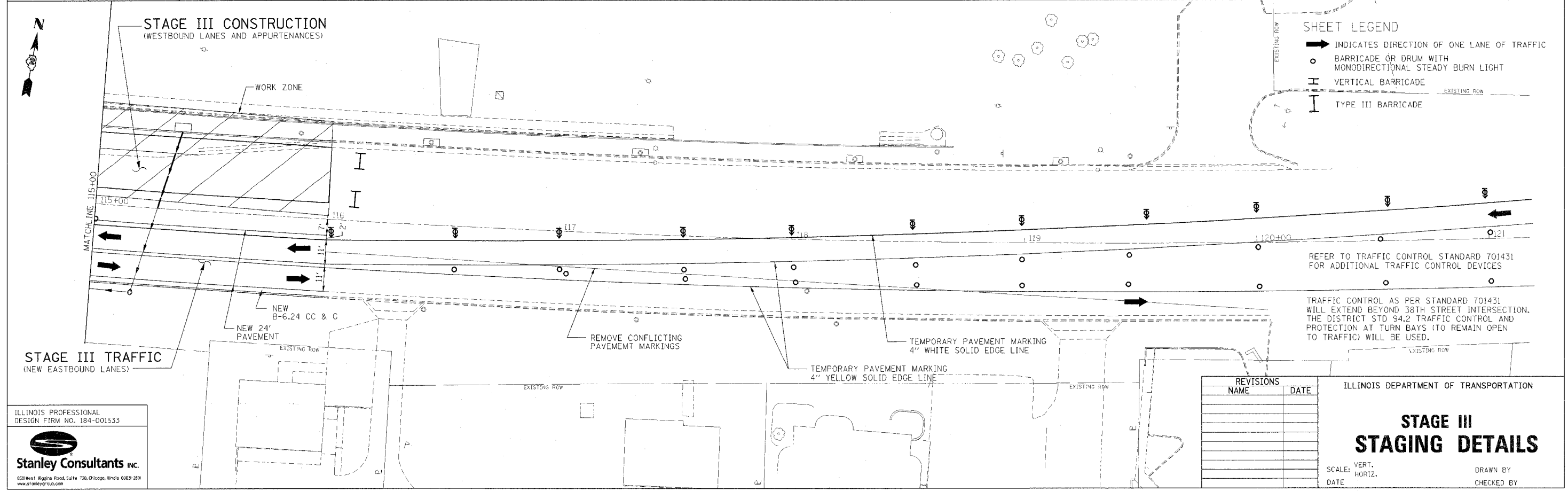
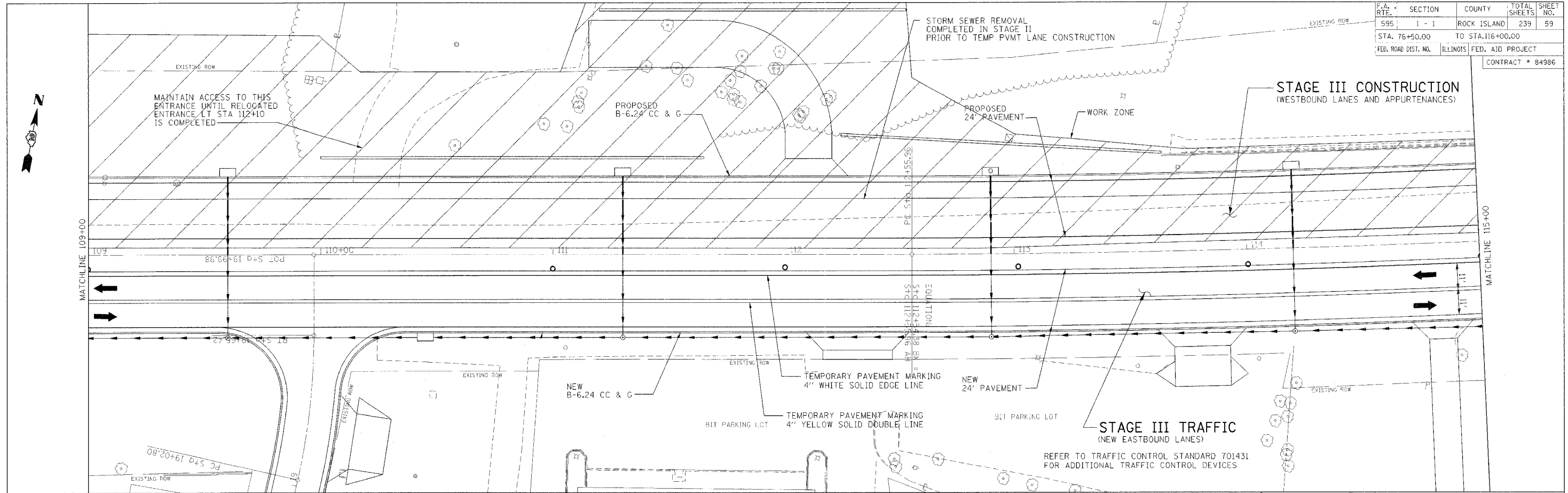


F.A. RTE.	SECTION	COUNTY	TOTAL SHEETS	SHEET NO.
595	1 - 1	ROCK ISLAND	239	59
STA. 76+50.00	TO STA. 116+00.00			
FED. ROAD DIST. NO.	ILLINOIS	FED. AID PROJECT		

CONTRACT # 84986



SHEET LEGEND

- ➔ INDICATES DIRECTION OF ONE LANE OF TRAFFIC
- BARRICADE OR DRUM WITH MONODIRECTIONAL STEADY BURN LIGHT
- ⊥ VERTICAL BARRICADE
- ⊥ TYPE III BARRICADE

REFER TO TRAFFIC CONTROL STANDARD 701431 FOR ADDITIONAL TRAFFIC CONTROL DEVICES

TRAFFIC CONTROL AS PER STANDARD 701431 WILL EXTEND BEYOND 38TH STREET INTERSECTION. THE DISTRICT STD 94.2 TRAFFIC CONTROL AND PROTECTION AT TURN BAYS (TO REMAIN OPEN TO TRAFFIC) WILL BE USED.

REVISIONS	DATE

ILLINOIS DEPARTMENT OF TRANSPORTATION

STAGE III STAGING DETAILS

SCALE: VERT. DATE HORIZ. DATE DRAWN BY CHECKED BY

ILLINOIS PROFESSIONAL DESIGN FIRM NO. 184-001533

Stanley Consultants Inc.

650 West Higgins Road, Suite 130, Chicago, Illinois 60639-2891
www.stanleyconsultants.com