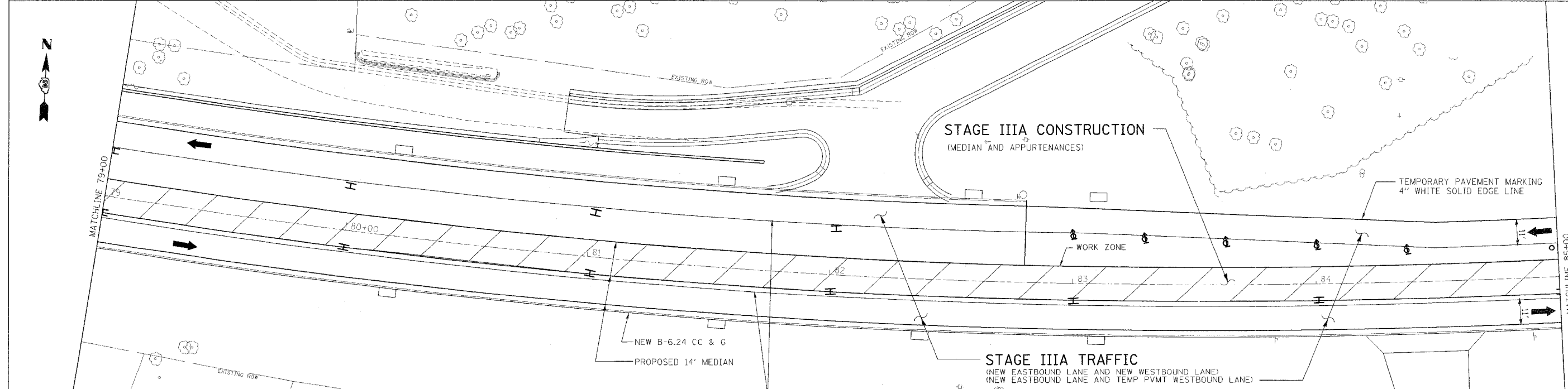
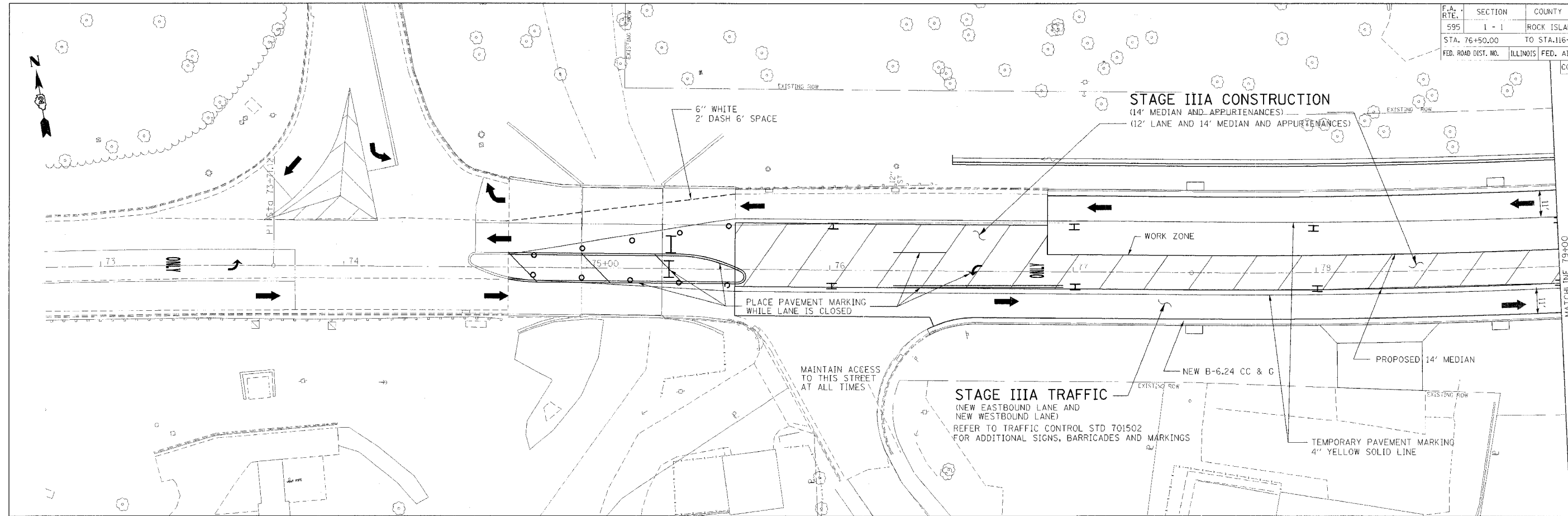


F.A. RTE.	SECTION	COUNTY	TOTAL SHEETS	SHEET NO.
595	1 - 1	ROCK ISLAND	239	53
STA. 76+50.00		TO STA. 116+00.00		
FED. ROAD DIST. NO.	ILLINOIS	FED. AID PROJECT		
CONTRACT # 84986				



- SHEET LEGEND**
- ➔ INDICATES DIRECTION OF ONE LANE OF TRAFFIC
  - BARRICADE OR DRUM WITH MONODIRECTIONAL STEADY BURN LIGHT
  - ⌚ VERTICAL BARRICADE
  - ⌚ TYPE III BARRICADE

ILLINOIS PROFESSIONAL DESIGN FIRM NO. 184-001533

Stanley Consultants Inc.  
891 West Highrise Road, Suite 730, Chicago, Illinois 6063-2881  
www.stanleygroup.com

REFER TO TRAFFIC CONTROL STD 701502 FOR ADDITIONAL SIGNS, BARRICADES AND MARKINGS

REVISIONS	
NAME	DATE

ILLINOIS DEPARTMENT OF TRANSPORTATION

## STAGE IIIA STAGING DETAILS

SCALE: VERT. DATE  
HORIZ. DRAWN BY  
CHECKED BY