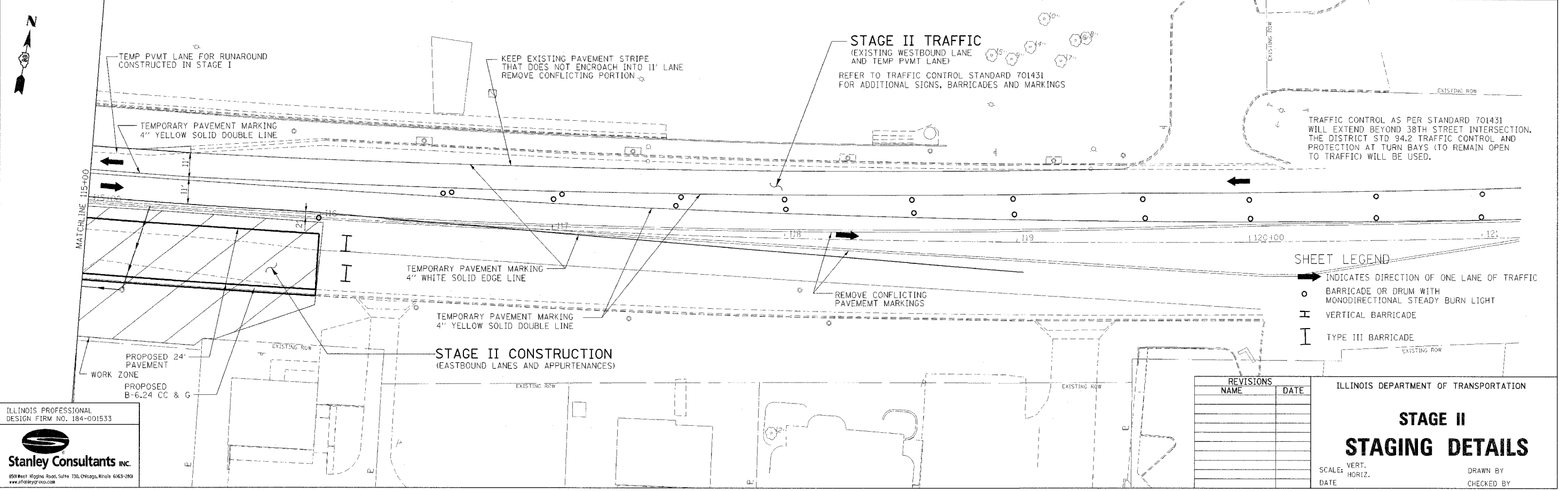
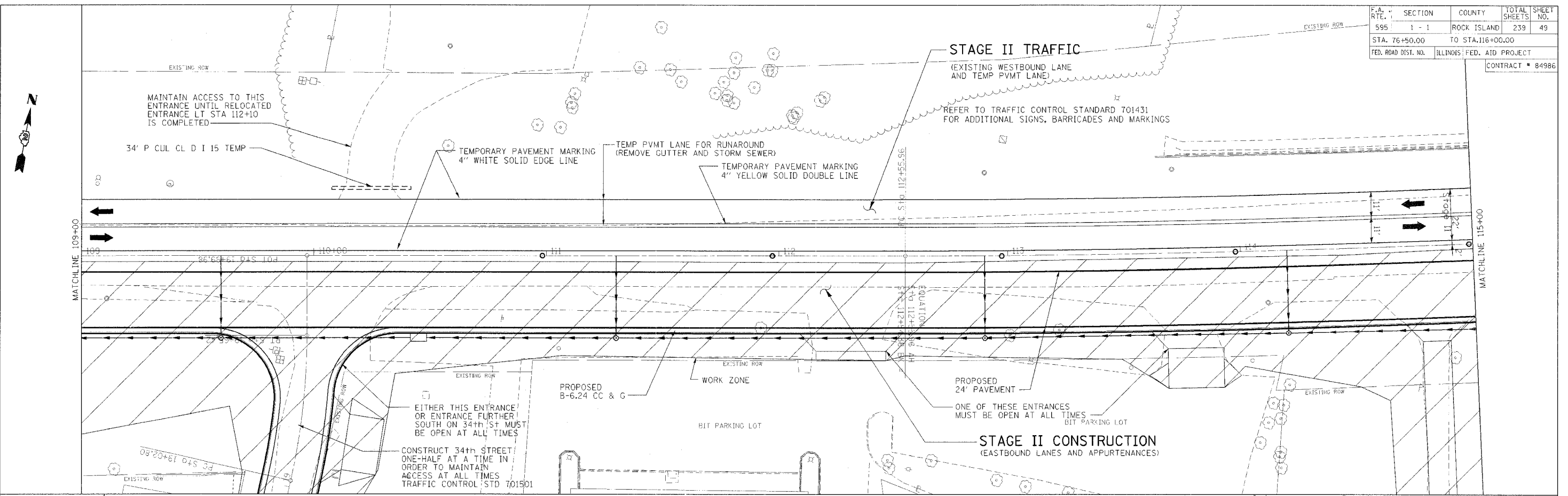


F.A. RTE.	SECTION	COUNTY	TOTAL SHEETS	SHEET NO.
595	1 - 1	ROCK ISLAND	239	49
STA. 76+50.00		TO STA. 116+00.00		
FED. ROAD DIST. NO.	ILLINOIS FED. AID PROJECT		CONTRACT # 84986	



SHEET LEGEND

- ➔ INDICATES DIRECTION OF ONE LANE OF TRAFFIC
- BARRICADE OR DRUM WITH MONODIRECTIONAL STEADY BURN LIGHT
- ⊥ VERTICAL BARRICADE
- I TYPE III BARRICADE

REVISIONS	
NAME	DATE

ILLINOIS DEPARTMENT OF TRANSPORTATION

STAGE II STAGING DETAILS

SCALE: VERT. _____
 HORIZ. _____
 DATE _____ DRAWN BY _____
 CHECKED BY _____

ILLINOIS PROFESSIONAL DESIGN FIRM NO. 184-001533

Stanley Consultants Inc.
 850 West Higgins Road, Suite 130, Chicago, Illinois 60639-2801
 www.stanleyconsultants.com