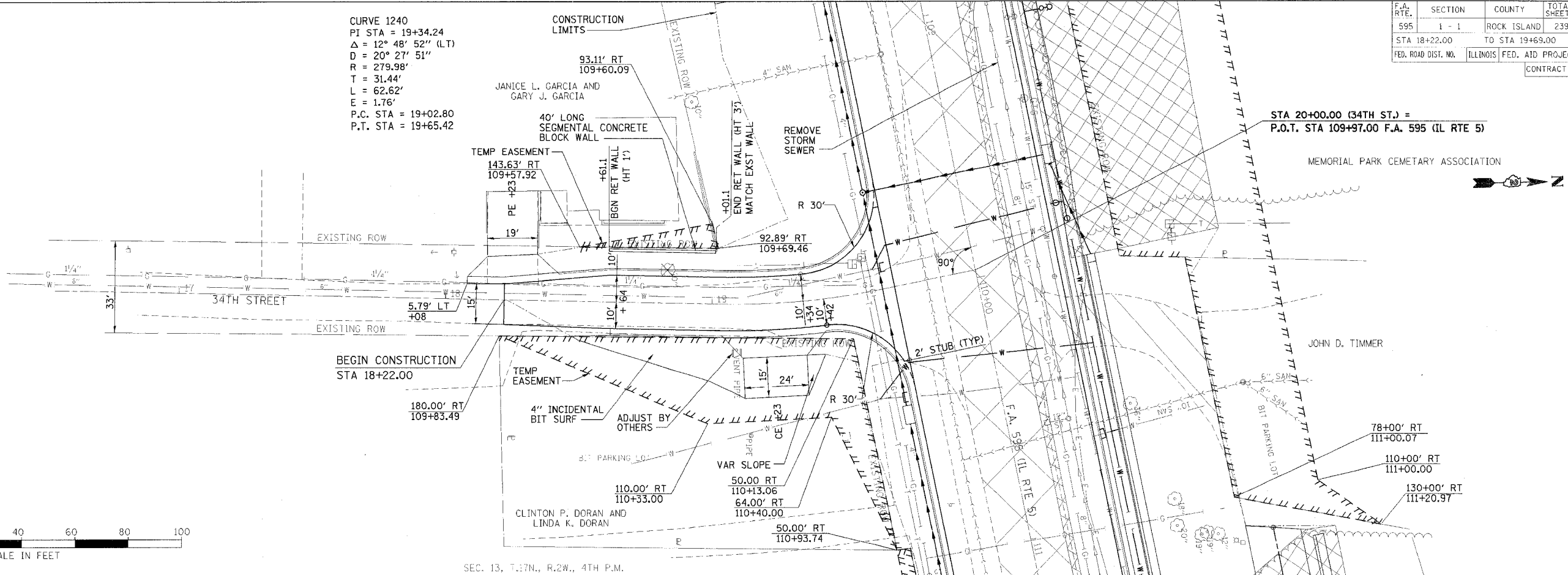


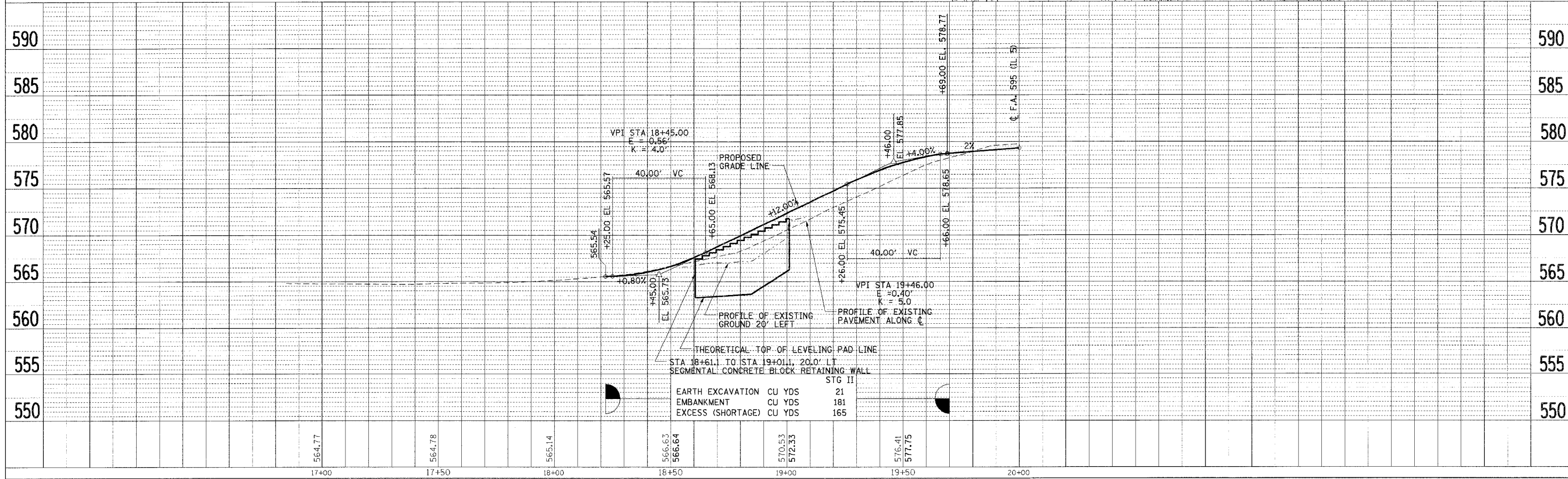
USGS DATUM
5TH GA(1929)

CURVE 1240
PI STA = 19+34.24
 $\Delta = 12^\circ 48' 52''$ (LT)
D = 20° 27' 51"
R = 279.98'
T = 31.44'
L = 62.62'
E = 1.76'
P.C. STA = 19+02.80
P.T. STA = 19+65.42

F.A. RTE.	SECTION	COUNTY	TOTAL SHEETS	SHEET NO.
595	1 - 1	ROCK ISLAND	239	37
STA 18+22.00		TO STA 19+69.00		
FED. ROAD DIST. NO.		ILLINOIS	FED. AID PROJECT	
CONTRACT # 84986				



SEC. 13, T.17N., R.2W., 4TH P.M.



PLAN & PROFILE-34TH STREET