

USGS DATUM
5TH GA(1929)

SEC. 13, T.17N., R.2W., 4TH P.M.

F.A. RTE.	SECTION	COUNTY	TOTAL SHEETS	SHEET NO.
595	1 - 1	ROCK ISLAND	239	33
STA 10+00		TO STA 14+28		
FED. ROAD DIST. NO.		ILLINOIS FED. AID PROJECT		CONTRACT # 84986

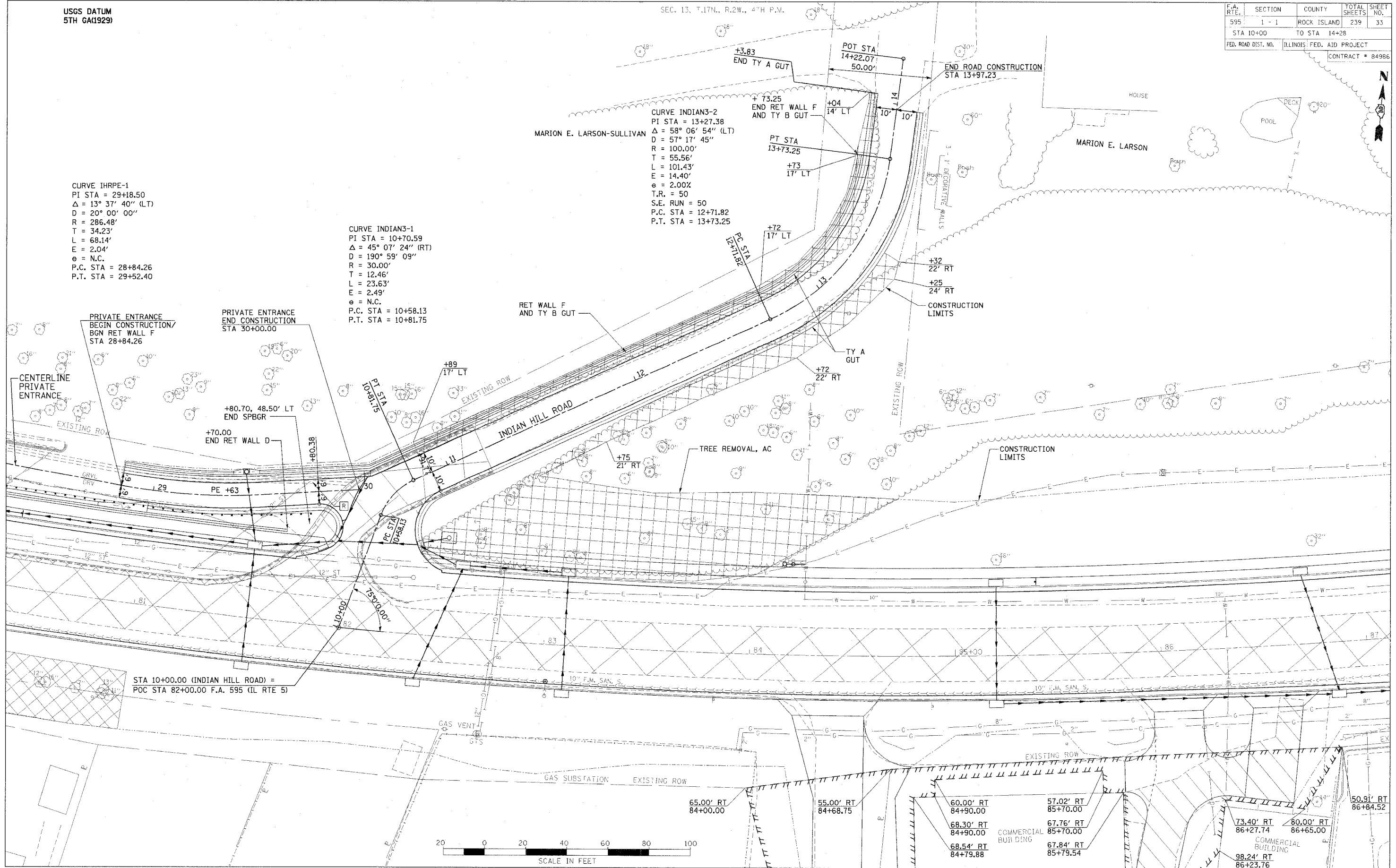
DATE	BY	REVISION

DATE	BY	REVISION

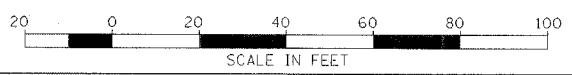
CURVE IHRPE-1
PI STA = 29+18.50
 $\Delta = 13^\circ 37' 40''$ (LT)
D = 20° 00' 00"
R = 286.48'
T = 34.23'
L = 68.14'
E = 2.04'
e = N.C.
P.C. STA = 28+84.26
P.T. STA = 29+52.40

CURVE INDIAN3-1
PI STA = 10+70.59
 $\Delta = 45^\circ 07' 24''$ (RT)
D = 190° 59' 09"
R = 30.00'
T = 12.46'
L = 23.63'
E = 2.49'
e = N.C.
P.C. STA = 10+58.13
P.T. STA = 10+81.75

CURVE INDIAN3-2
PI STA = 13+27.38
 $\Delta = 58^\circ 06' 54''$ (LT)
D = 57° 17' 45"
R = 100.00'
T = 55.56'
L = 101.43'
E = 14.40'
e = 2.00%
T.R. = 50
S.E. RUN = 50
P.C. STA = 12+71.82
P.T. STA = 13+73.25



STA 10+00.00 (INDIAN HILL ROAD) =
POC STA 82+00.00 F.A. 595 (IL RTE 5)



60.00' RT 84+90.00	57.02' RT 85+70.00	50.91' RT 86+84.52
68.30' RT 84+90.00	67.76' RT 85+70.00	80.00' RT 86+65.00
68.54' RT 84+79.88	67.84' RT 85+79.54	98.24' RT 86+23.76

PLAN - INDIAN HILL ROAD