

USGS DATUM
5TH GA(1929)

LEGEND

- TREE REMOVAL, ACRE
- REMOVE WATER
- TREE REMOVAL

STA 116+00, 35.6' LT
SW 2' BACK CURB
END SW

PROJECT ENDS
STA 116+00.00

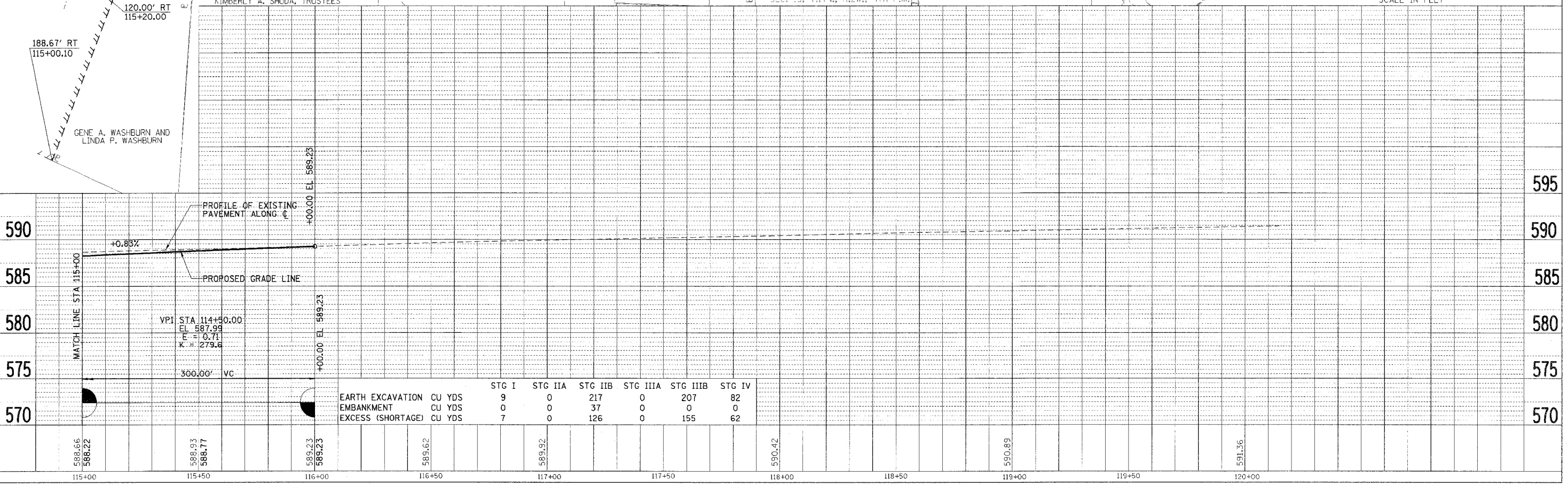
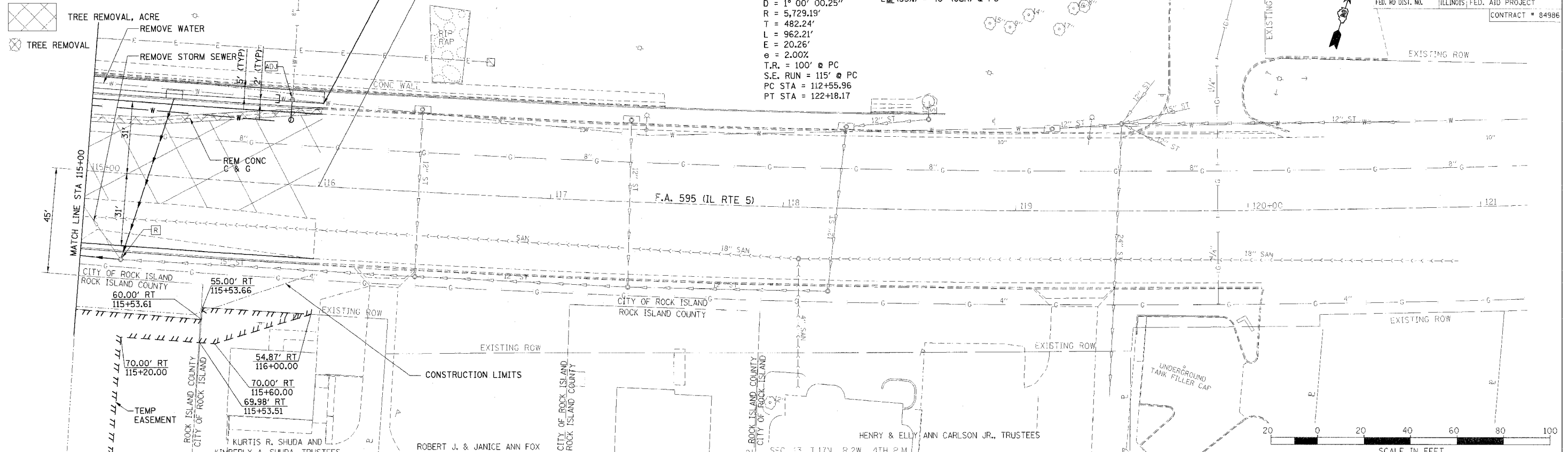
CURVE 1220
PI STA = 117+38.20
 $\Delta = 9^\circ 37' 22''$ (LT)
D = 1° 00' 00.25"
R = 5,729.19'
T = 482.24'
L = 962.21'
E = 20.26'
e = 2.00%
T.R. = 100' @ PC
S.E. RUN = 115' @ PC
PC STA = 112+55.96
PT STA = 122+18.17

DISTRIBUTION OF S.E.
L.M. (65%) = 75' (TAN) @ PC
L.M. (35%) = 40' (CUR) @ PC

F.A. RTE.	SECTION	COUNTY	TOTAL SHEETS	SHEET NO.
595	1 - 1	ROCK ISLAND	239	32
STA 115+00		TO STA 116+00		
FED. RD DIST. NO.		ILLINOIS FED. AID PROJECT		CONTRACT # 84986

PLAN	DESIGNED	DATE
NOTED	BY	
NO. 1	BY	
NO. 2	BY	

PROF. P.L.	DESIGNED	DATE
NOTED	BY	
NO. 1	BY	
NO. 2	BY	



	STG I	STG IIA	STG IIB	STG IIIA	STG IIIB	STG IV
EARTH EXCAVATION CU YDS	9	0	217	0	207	82
EMBANKMENT CU YDS	0	0	37	0	0	0
EXCESS (SHORTAGE) CU YDS	7	0	126	0	155	62

PLAN & PROFILE - F.A. 595 (IL RTE 5)