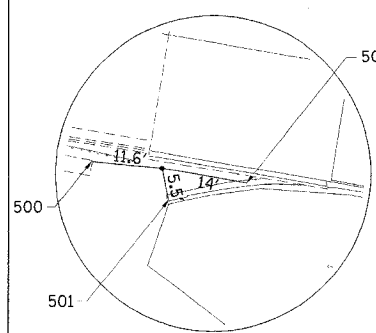
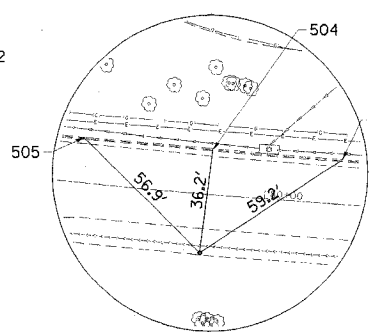


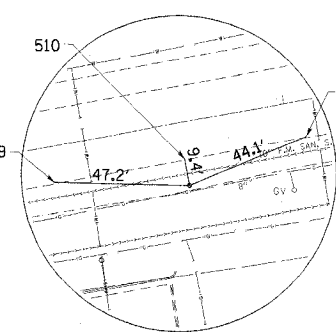
F.A. RTE.	SECTION	COUNTY	TOTAL SHEET SHEETS NO.
595	1 - 1	ROCK ISLAND	239 / 24
STA.	TO STA.		
FED. ROAD DIST. NO. 7	ILLINOIS	FED. AID PROJECT	
CONTRACT # 84986			



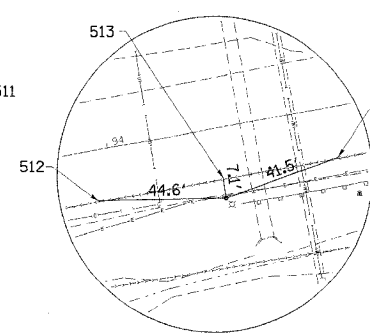
HORIZONTAL CONTROL POINT NO. 100



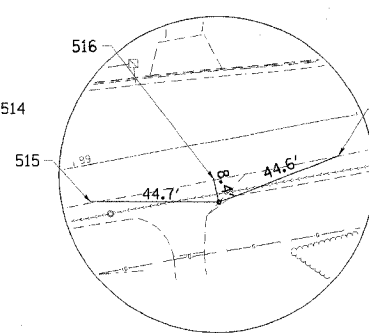
HORIZONTAL CONTROL POINT NO. 101



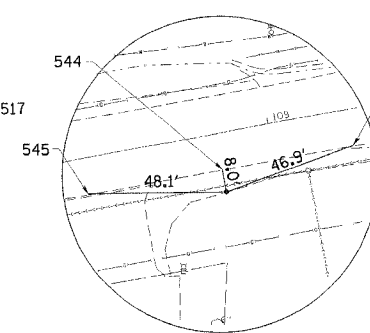
HORIZONTAL CONTROL POINT NO. 103



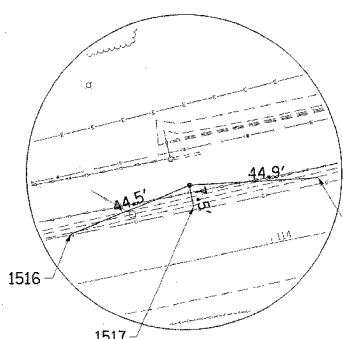
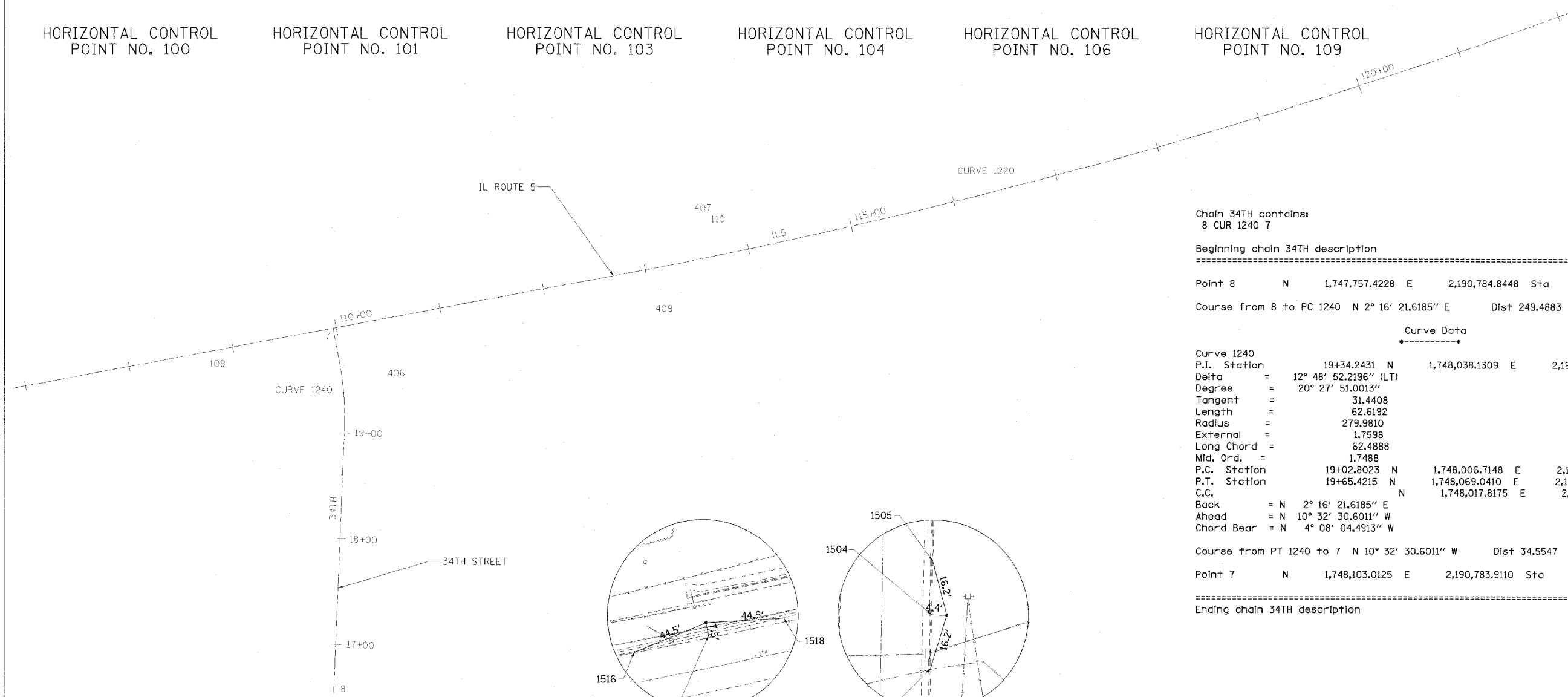
HORIZONTAL CONTROL POINT NO. 104



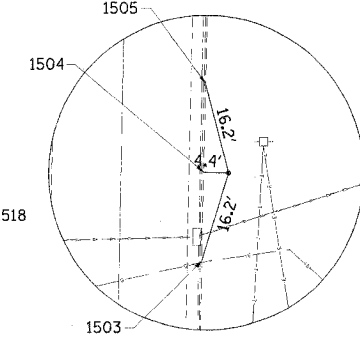
HORIZONTAL CONTROL POINT NO. 106



HORIZONTAL CONTROL POINT NO. 109



HORIZONTAL CONTROL POINT NO. 110



HORIZONTAL CONTROL POINT NO. 105

Chain 34TH contains:
8 CUR 1240 7

Beginning chain 34TH description

Point 8 N 1,747,757.4228 E 2,190,784.8448 Sta 16+53.3140

Course from 8 to PC 1240 N 2° 16' 21.6185" E Dist 249.4883

Curve Data

Curve 1240
P.I. Station 19+34.2431 N 1,748,038.1309 E 2,190,795.9851
Delta = 12° 48' 52.2196" (LT)
Degree = 20° 27' 51.0013"
Tangent = 31.4408
Length = 62.6192
Radius = 279.9810
External = 1.7598
Long Chord = 62.4888
Mid. Ord. = 1.7488
P.C. Station 19+02.8023 N 1,748,006.7148 E 2,190,794.7383
P.T. Station 19+65.4215 N 1,748,069.0410 E 2,190,790.2329
C.C. N 1,748,017.8175 E 2,190,514.9775
Back = N 2° 16' 21.6185" E
Ahead = N 10° 32' 30.6011" W
Chord Bear = N 4° 08' 04.4913" W

Course from PT 1240 to 7 N 10° 32' 30.6011" W Dist 34.5547

Point 7 N 1,748,103.0125 E 2,190,783.9110 Sta 19+99.9763

Ending chain 34TH description

ILLINOIS PROFESSIONAL DESIGN FIRM NO. 184-001533	REVISIONS		ILLINOIS DEPARTMENT OF TRANSPORTATION
	NAME	DATE	
Stanley Consultants INC. 850 West Higgins Road, Suite 130, Chicago, Illinois 60639-2803 www.stanleygroup.com			ALIGNMENT, TIES AND BENCHMARKS
		SCALE: VERT. _____	DRAWN BY _____
		HORIZ. _____	

ALIGNMENT, TIES AND BENCHMARKS