

F.A. RTE.	SECTION	COUNTY	TOTAL SHEETS	SHEET NO.
595	1 - 1	ROCK ISLAND	239	22
STA.		TO STA.		
FED. ROAD DIST. NO. 7		ILLINOIS FED. AID PROJECT		
CONTRACT # 84986				

Chain IL5 contains:
1 CUR 1200 CUR 1210 1222 CUR 1220

Beginning chain IL5 description

Point 1 N 1,747,816.5181 E 2,185,335.0893 Sta 54+97.3300

Course from 1 to PC 1200 S 88° 51' 13.8743" E Dist 1,450.7552

Curve Data
 Curve 1200
 P.I. Station 71+59.9866 N 1,747,783.2605 E 2,186,997.4132
 Delta = 8° 27' 40.4112" (RT)
 Degree = 2° 00' 00.4926"
 Tangent = 211.9014
 Length = 423.0323
 Radius = 2,864.5930
 External = 7.8268
 Long Chord = 422.6480
 Mid. Ord. = 7.8054
 P.C. Station 69+48.0852 N 1,747,787.4991 E 2,186,785.5542
 P.T. Station 73+71.1175 N 1,747,747.8951 E 2,187,206.3426
 C.C. 73+71.1175 N 1,744,923.4792 E 2,186,728.2546
 Back = S 88° 51' 13.8743" E
 Ahead = S 80° 23' 33.4631" E
 Chord Bear = S 84° 37' 23.6687" E

Course from PT 1200 to PC 1210 S 80° 23' 33.4631" E Dist 377.6464

Curve Data

Curve 1210
 P.I. Station 82+57.7148 N 1,747,599.9259 E 2,188,080.5050
 Delta = 20° 08' 56.9908" (LT)
 Degree = 2° 00' 00.4901"
 Tangent = 508.9509
 Length = 1,007.3896
 Radius = 2,864.5940
 External = 44.8612
 Long Chord = 1,002.2066
 Mid. Ord. = 44.1695
 P.C. Station 77+48.7639 N 1,747,684.8676 E 2,187,578.6924
 P.T. Station 87+56.1535 N 1,747,693.0398 E 2,188,580.8657
 C.C. 87+56.1535 N 1,750,509.2844 E 2,188,056.7805
 Back = S 80° 23' 33.4631" E
 Ahead = N 79° 27' 29.5461" E
 Chord Bear = N 89° 31' 58.0415" E

Course from PT 1210 to PC 1220 N 79° 27' 29.5461" E Dist 2,498.2285

Course from PT 1210 to 1222 N 79° 27' 29.5461" E Dist 2,498.2285

Point 1222 N 1,748,150.0974 E 2,191,036.9284 Sta 112+54.3821

Equation: Sta 112+54.3821 (BK) = Sta 112+55.9600 (AH)

End Region 1

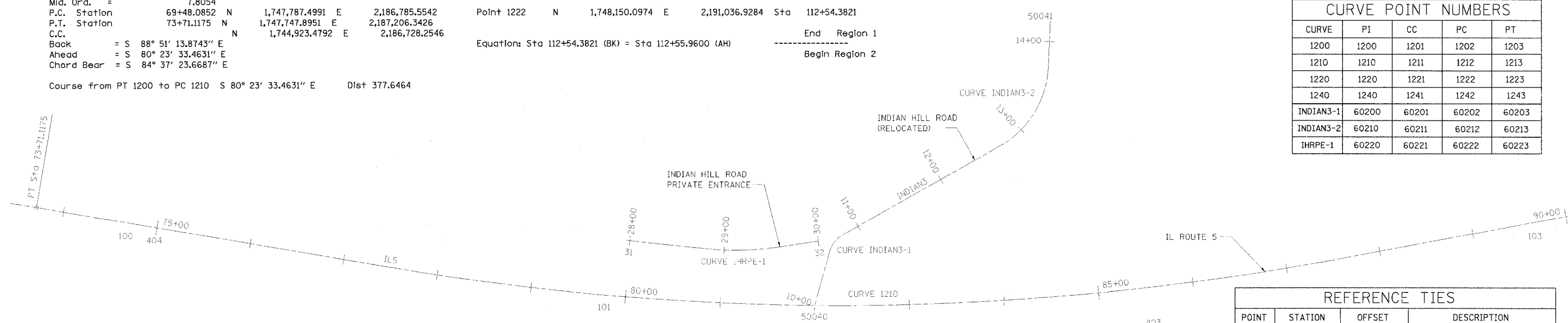
Begin Region 2

Curve Data

Curve 1220
 P.I. Station 117+38.2003 N 1,748,238.3246 E 2,191,511.0293
 Delta = 9° 37' 22.0131" (LT)
 Degree = 1° 00' 00.2457"
 Tangent = 482.2403
 Length = 962.2125
 Radius = 5,729.1870
 External = 20.2599
 Long Chord = 961.0820
 Mid. Ord. = 20.1885
 P.C. Station 112+55.9600 N 1,748,150.0974 E 2,191,036.9284
 P.T. Station 122+18.1725 N 1,748,404.5615 E 2,191,963.7113
 C.C. 122+18.1725 N 1,753,782.5856 E 2,189,988.7582
 Back = N 79° 27' 29.5461" E
 Ahead = N 69° 50' 07.5330" E
 Chord Bear = N 74° 38' 48.5396" E

Ending chain IL5 description

CURVE	PI	CC	PC	PT
1200	1200	1201	1202	1203
1210	1210	1211	1212	1213
1220	1220	1221	1222	1223
1240	1240	1241	1242	1243
INDIAN3-1	60200	60201	60202	60203
INDIAN3-2	60210	60211	60212	60213
IHRPE-1	60220	60221	60222	60223



Point	North	East	Elevation	Chain	Station	Offset
400 Railroad Spike In Power Pole	1,748,498.2813	2,189,358.9171	635.8700	IL5	96+68.39	649.30 LT
401 Chisled Square In Traffic Signal Foundation	1,747,800.0895	2,189,375.4471	575.5700	IL5	95+56.91	40.12 RT
402 Nail In Power Pole	1,747,721.6595	2,189,059.5013	577.0900	IL5	92+31.95	59.43 RT
403 Bolt In Advertising Sign	1,747,620.2022	2,188,385.0774	582.8700	IL5	85+53.22	43.08 RT
404 Disk In Handrail	1,747,707.0026	2,187,330.3397	582.2400	IL5	75+00.20	19.62 RT
405 Chisled Square In Headwall	1,747,973.9041	2,190,201.8781	570.4200	IL5	104+01.19	20.44 RT
406 Chisled Square In Sign Foundation	1,748,054.5695	2,190,843.7788	577.0600	IL5	110+47.02	58.57 RT
407 Chisled Square In Retaining Wall	1,748,211.1405	2,191,134.7216	592.5500	IL5	113+64.05	41.10 LT
409 Chisled Square In Pole Foundation	1,748,116.0727	2,191,098.0786	588.2700	IL5	113+09.43	44.88 RT

Point	North	East	Elevation	Chain	Station	Offset
100 Transverse Station, Pin	1,747,710.0008	2,187,300.5282	579.42	IL5	74+70.31	21.64 RT
101 Transverse Station, Pin	1,747,635.2157	2,187,805.4526	584.37	IL5	79+79.24	20.44 RT
103 Transverse Station, Pin	1,747,709.1541	2,188,787.8484	581.17	IL5	89+62.59	22.02 RT
104 Transverse Station, Pin	1,747,793.4567	2,189,255.1354	577.40	IL5	94+37.41	24.63 RT
105 Transverse Station, Pin	1,748,022.7468	2,189,430.7413	589.12	IL5	96+52.01	168.65 LT
106 Transverse Station, Pin	1,747,889.9813	2,189,755.6548	573.77	IL5	99+47.15	21.31 RT
109 Transverse Station, Pin	1,748,061.6384	2,190,674.1095	576.82	IL5	108+81.50	20.58 RT
110 Transverse Station, Pin	1,748,198.4146	2,191,149.1663	588.08	IL5	113+75.69	25.72 LT

POINT	STATION	OFFSET	DESCRIPTION
500	74+58.70	22.48' RT	MISC. CONCRETE SLAB
501	74+72.26	26.74' RT	WINGWALL TOP
502	74+84.38	21.69' RT	WINGWALL TOP
503	80+26.05	15.72' LT	CURB
504	79+80.69	15.72' LT	CURB
505	79+35.31	15.73' LT	CURB
509	89+16.42	12.48' RT	PAVEMENT, EDGE
510	89+62.60	12.61' RT	PAVEMENT, EDGE
511	90+05.68	12.59' RT	PAVEMENT, EDGE
512	93+93.41	17.61' RT	PAVEMENT, EDGE
513	94+37.63	17.58' RT	PAVEMENT, EDGE
514	94+78.37	17.69' RT	PAVEMENT, EDGE
515	99+03.21	13.01' RT	PAVEMENT, EDGE
516	99+46.80	12.93' RT	PAVEMENT, EDGE
517	99+90.97	12.91' RT	PAVEMENT, EDGE
543	109+27.79	12.71' RT	PAVEMENT, EDGE
544	108+81.50	12.56' RT	PAVEMENT, EDGE
545	108+34.05	12.51' RT	PAVEMENT, EDGE
1503	96+44.56	154.27' LT	CURB
1504	96+47.68	169.59' LT	CURB
1505	96+50.87	184.79' LT	CURB
1516	113+31.80	17.31' LT	PAVEMENT, EDGE
1517	113+75.74	18.19' LT	PAVEMENT, EDGE
1518	114+20.27	19.23' LT	PAVEMENT, EDGE

