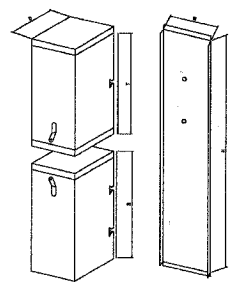
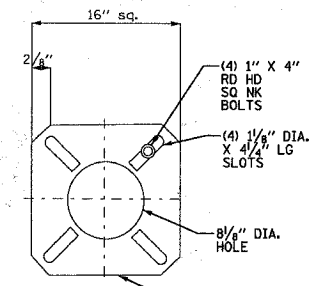


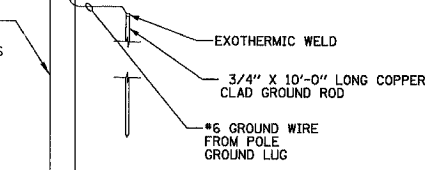
- FEATURES :
- 14 GAUGE 235 MILL GALVANIZED STEEL WITH 12 GAUGE HASP
 - POWDER COATED PAINT DARK GREEN
 - ROUNDED FRONT
 - RECESSED PENTLOCK FEATURE



CAT#	D	W	T	B	H	COMMENTS
202-3 OOME	7-1/2	7-1/2	20-5/8	20-5/8	38	STANDARD UNIT
202-3C	7-1/2	7-1/2	20-5/8	20-5/8	38	SWINGING KNOCKOUT
202-3CPHB	7-1/2	7-1/2	21	26	46	PENTLOCK + SWINGING KNOCKOUT
208-44R	10-1/2	10-1/2	21-1/8	24	44	
206-44RCHP	8-1/2	10-1/2	21-1/8	24	44	PENTLOCK + SWINGING KNOCKOUT
204-38	10-1/2	10-1/2	21-1/8	18	38	STANDARD 8 1/2 X 10 1/2
204-38C	10-1/2	10-1/2	21-1/8	18	38	SWINGING KNOCKOUT
204-38CPH	10-1/2	10-1/2	21-1/8	18	38	PENTLOCK + SWINGING KNOCKOUT

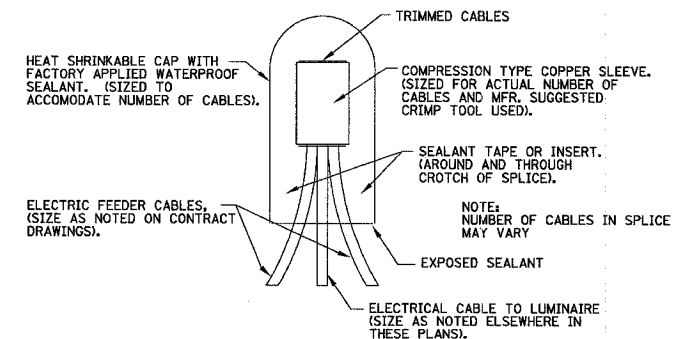


METAL ANCHOR BASE: GALVANIZED 8-5/8" x 84" SCH. 20 STL. PIPE W/ (2) 3" SAW TEETH ON BOTTOM AND 1" TH. X 16" SQ. MOUNTING PLATE WELDED TO TOP. PROVIDE TWO WIRING ACCESS SLOTS (2-1/2" X 12") @ 180 DEGREES THRU PIPE SECTION 12" BELOW TOP OF BASE. MOUNTING PLATE BOLT CIRCLE DIA. OF 10-1/2" - 15" W/ (4) 1-1/8" WIDE SLOTS. FURN. W/ (4) 1" X 4" HEX HEAD GRADE 5 ANCHOR BOLTS, (4) 1" GRADE 5 NUTS, & (8) 1" WASHERS. DESIGN TO AASHTO-1994, 80 MPH WIND W/ 1.3 GUST AND AASHTO-2000, 90 MPH WIND W/ 1.14 GUST.

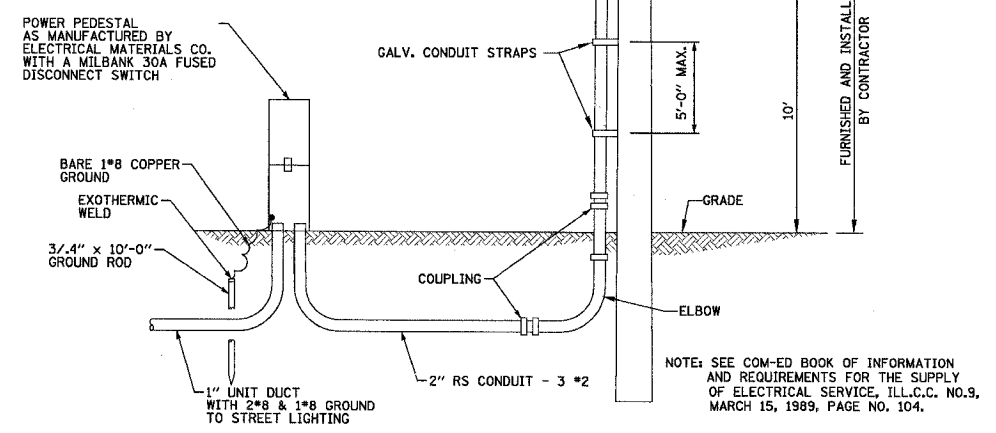


NOTE: SETBACK BEHIND BARRIER CURB MINIMUM 6 FOOT, VARIABLE - SEE PLANS

LIGHT POLE - TYPE A & B
NO SCALE

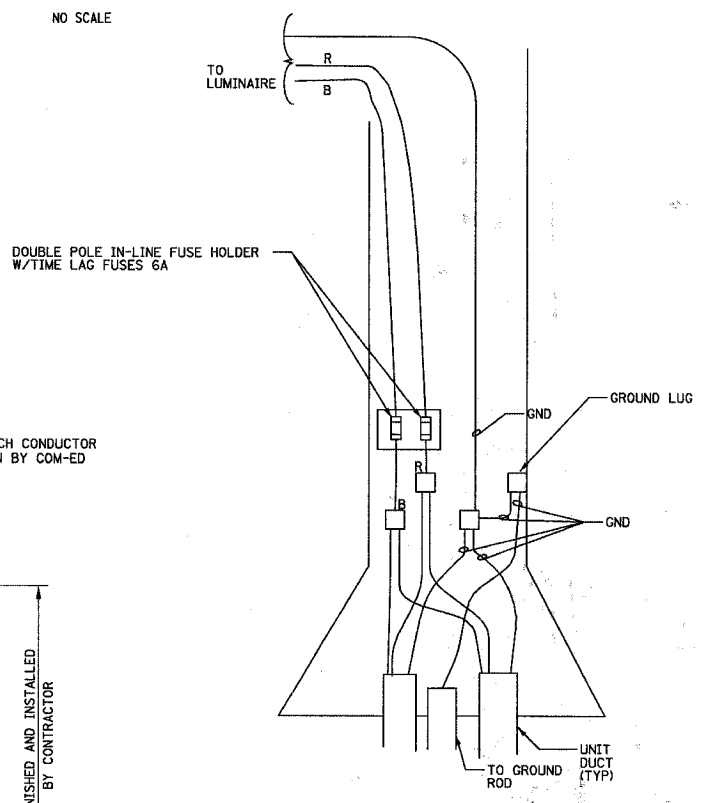


SPlicing ELECTRICAL CABLES BASIC MATERIALS AND METHODS
NO SCALE

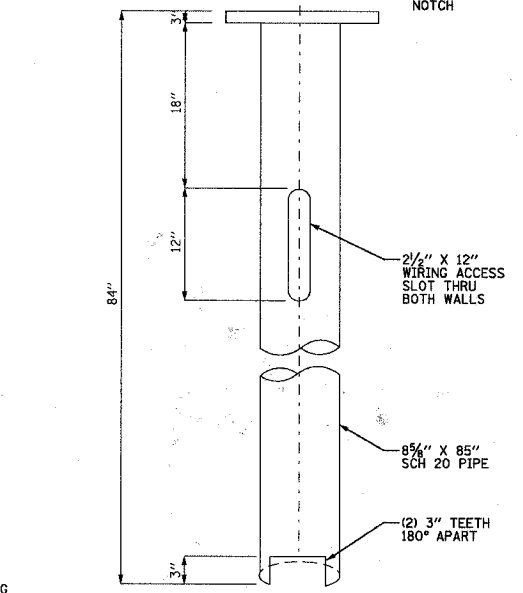


COM-ED OVERHEAD CONNECTION WHERE REQUIRED
NO SCALE

POWER PEDESTAL DETAIL
NO SCALE



POLE WIRING DETAIL
NO SCALE



SUGGESTED FOR 30' POLES

MILLERBERND'S 490A25-GV SCREW-IN-ANCHOR-BASE IS DESIGNED FOR FAST, ONE TRIP INSTALLATION OF LIGHTING POLES. IT IS QUICKLY INSTALLED IN MINUTES, USING A STANDARD DIGGER DERRICK WITH A CONVENTIONAL KELLY BAR.

THE 490A25-GV SCREW-IN-ANCHOR-BASE IS FABRICATED FROM LOW CARBON 36,000 PSI 1" STEEL PLATE AND 35,000 PSI SCHEDULE 20 PIPE. IT IS HOT DIP GALVANIZED PER ASTM A123. THE 490A25-GV IS FURNISHED COMPLETE WITH (4) 1" X 4" ROUND HEAD SQUARE NECK BOLTS (ASTM A325), (4) HEAVY HEX NUTS & (8) FLAT WASHER SHIMS ALL GALVANIZED PER ASTM A153. IT HAS (2) 2 1/2" X 12" WIREWAYS SPACED 180 DEGREES APART. THESE WIREWAYS ARE ALIGNED WITH THE LOCATION NOTCH CUT INTO THE BASE PLATE.

THE BASE IS DESIGNED TO WITHSTAND 15,000 FT. LBS. OF INSTALLATION TORQUE.

SPECIFICATIONS

TYPICAL POLE SIZE = 40' W/SINGLE 15' ARM
MAX. EPA FOR TYP POLE = 1.6 SQ. FT. (SEE NOTE 3)
MAX. BASE MOMENT = 24, 381 FT. - LB.
MAX. BASE SHEAR = 924 LBS.
BOLT CIRCLE = 11"-17"
SHAFT O.D. = 8 5/8"
SHAFT LENGTH = 85"
MATERIAL = SCHEDULE 20
PLATE MATERIAL = 36,000 PSI MIN. YIELD
FINISH = HOT DIP GALVANIZED
ANCHOR BOLTS = 1" X 4" (A325)
ASSEMBLY WEIGHT = 207 LBS.

- MAXIMUM MOMENT AND SHEAR RATINGS FOR BASE WHEN USED WITH THE TYPICAL POLE ABOVE.
- NOTE:
1. DESIGNED TO AASHTO-1994, 80 MPH WIND W/ 1.3 GUST. FOR OTHER WIND SPEEDS CONSULT FACTORY.
 2. BASE DESIGNED FOR SOILS WITH 1,000 PSF COHESION OR GREATER.
 3. EPA WILL INCREASE WITH SHORTER ARM LENGTHS OR TENON TOP POLES.

LIGHTING DETAILS

DESIGNED BY	SCALE
JLR	NONE
DRAWN BY	PROJECT NO.
CJC	041178
CHECKED BY	SHEET NO.
JTB	
DATE	
11/14/05	13 OF 13

CITY OF COUNTRY CLUB HILLS, ILLINOIS
NOB HILL STREET LIGHTING IMPROVEMENTS

Baxter & Woodman
Crystal Lake, Illinois 815.459.1260
Burlington, Wisconsin 262.763.7834
Mokena, Illinois 708.478.2090
DeKalb, Illinois 815.787.3111
Grayslake, Illinois 847.223.5088
Rockford, Illinois 815.489.1651

CONSULTANTS	REV. NO.	DATE	DESCRIPTION

* REFER TO EQUIPMENT MANUFACTURER'S SHOP DRAWINGS

DRAWING FILE: ...N:\041178\dgn\41178-detail1.sht

12/20/2005 01:35:10 PM I:\CCH\041178\dgn\41178-detail1.sht
 COPYRIGHT © 2005 BY BAXTER & WOODMAN, INC.
 STATE OF ILLINOIS PROFESSIONAL DESIGN FIRM
 LICENSE NO. 041178-0001 EXP. 09/30/2007