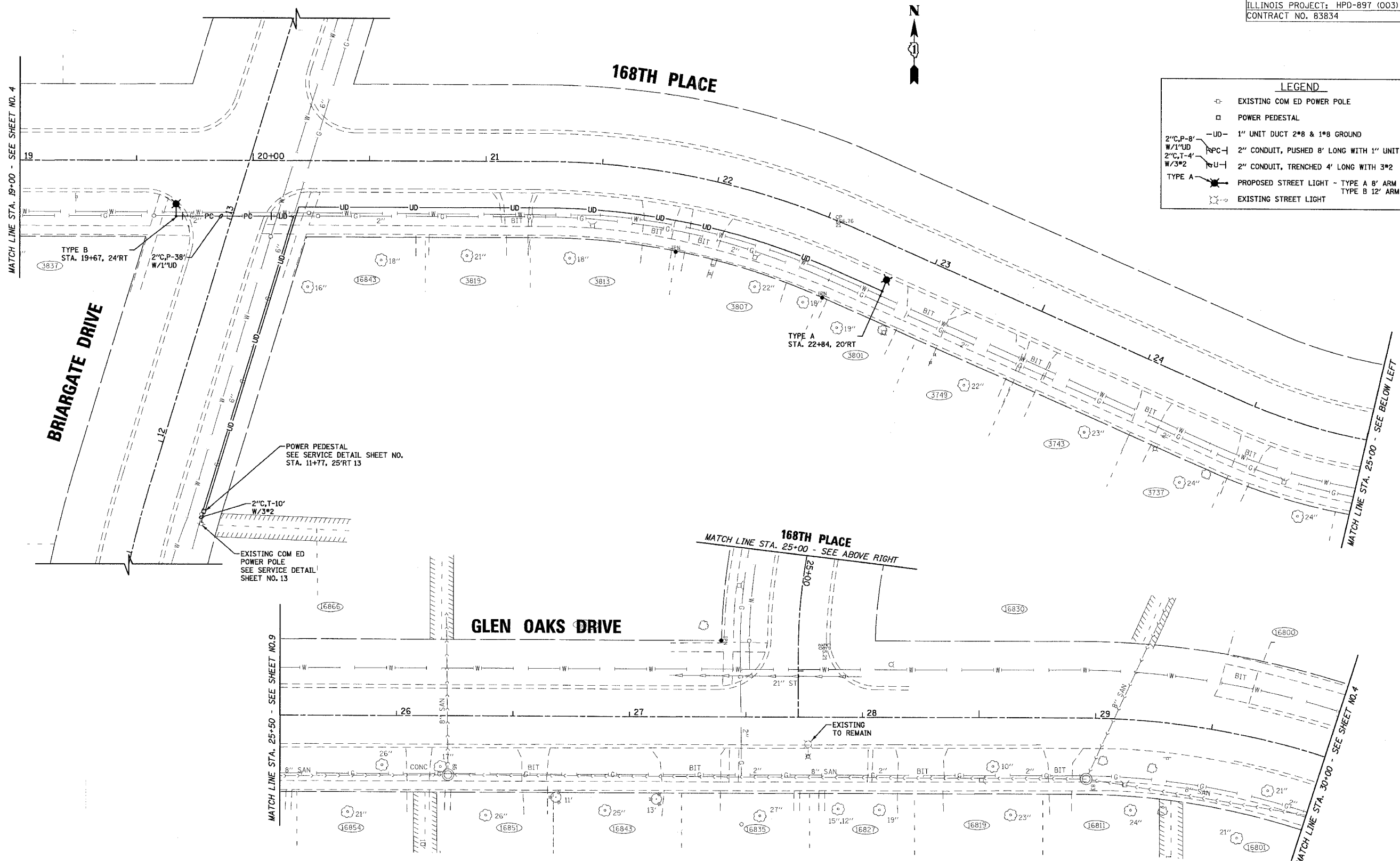




LEGEND	
⊠	EXISTING COM ED POWER POLE
□	POWER PEDESTAL
—UD—	1" UNIT DUCT 2#8 & 1#8 GROUND
2" C.P-8' W/1" UD	2" CONDUIT, PUSHED 8' LONG WITH 1" UNIT DUCT
2" C.T-4' W/3#2	2" CONDUIT, TRENCHED 4' LONG WITH 3#2
TYPE A	PROPOSED STREET LIGHT - TYPE A 8' ARM
TYPE B	PROPOSED STREET LIGHT - TYPE B 12' ARM
⊙	EXISTING STREET LIGHT



12/30/2005 04:56:46 PM I:\CCKL\041178\041178-pp5.sht  
 COPYRIGHT © 2005 BY BAXTER & WOODMAN, INC.  
 STATE OF ILLINOIS - PROFESSIONAL DESIGN FIRM  
 LICENSE NO. 041-0000178 - EXPIRES 12/31/2007

CONSULTANTS	REV. NO.	DATE	DESCRIPTION

\* REFER TO EQUIPMENT MANUFACTURER'S SHOP DRAWINGS

DRAWING FILE: ... \041178\041178-pp5.sht

**BAXTER & WOODMAN**  
 Consulting Engineers

**Baxter & Woodman**  
 Crystal Lake, Illinois 815.459.1260  
 Burlington, Wisconsin 262.763.7834  
 Mokena, Illinois 708.478.2090  
 DeKalb, Illinois 815.787.3111  
 Graylake, Illinois 847.223.5088  
 Rockford, Illinois 815.488.1551

**CITY OF COUNTRY CLUB HILLS, ILLINOIS**  
**NOB HILL STREET LIGHTING IMPROVEMENTS**

**168TH PLACE**  
**STA. 19+00 TO STA 25+00**  
**GLEN OAKS DRIVE**  
**STA. 25+50 TO STA 30+00**

DESIGNED BY	JLR	SCALE	1" = 20'
DRAWN BY	CJC	PROJECT NO.	041178
CHECKED BY	JTB	SHEET NO.	7 OF 13
DATE	11/14/05		