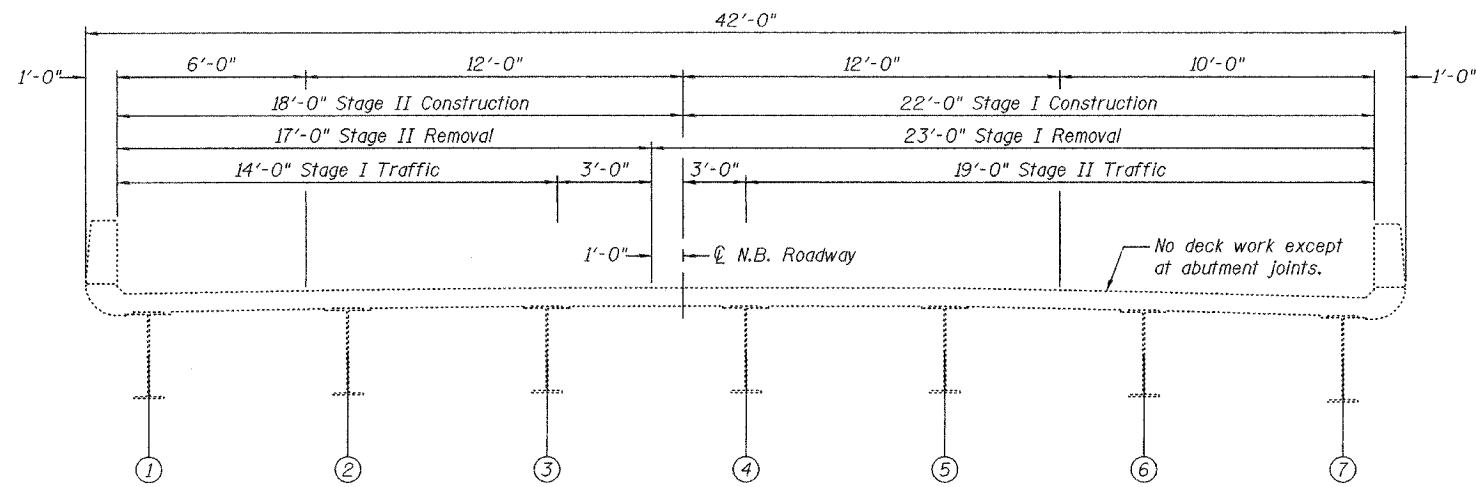


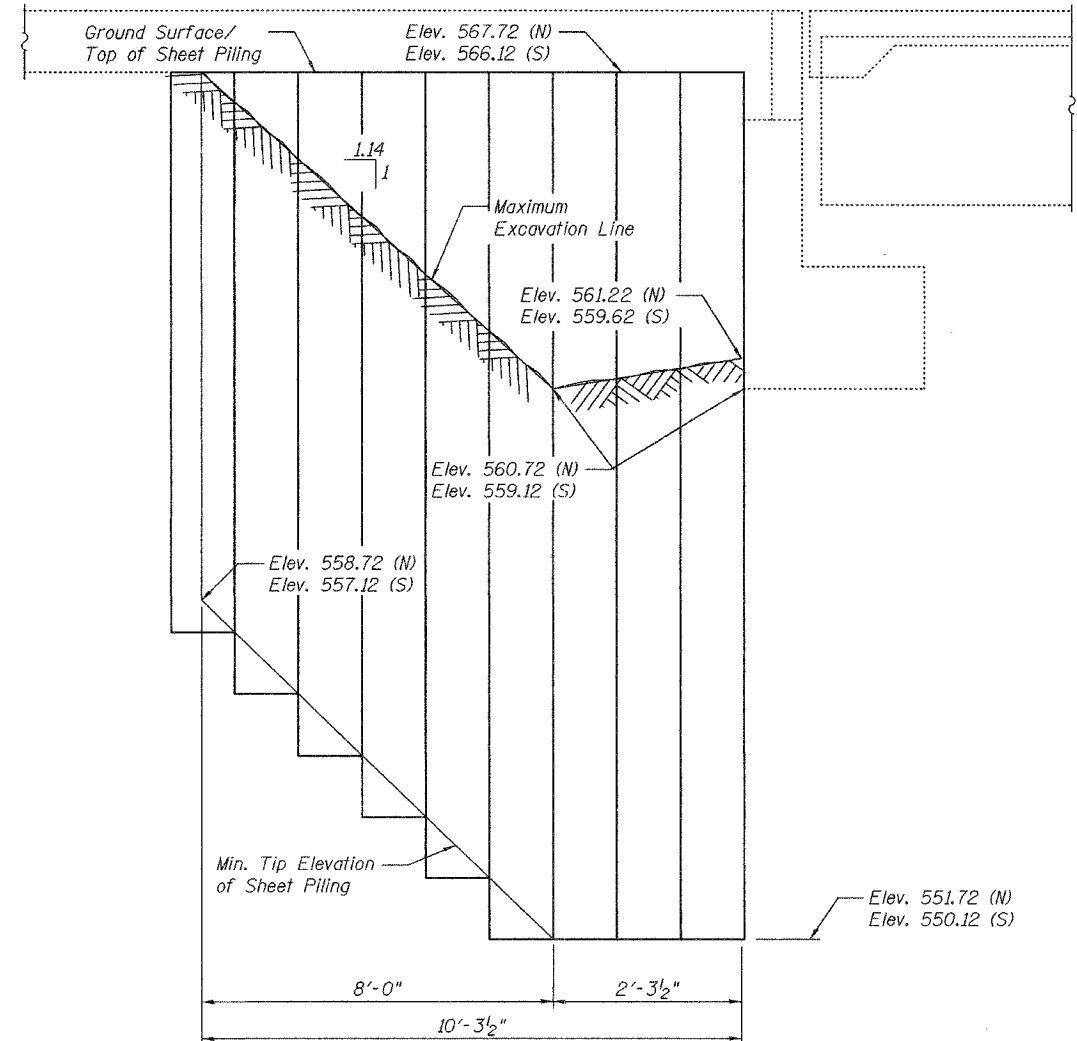
STATE OF ILLINOIS  
DEPARTMENT OF TRANSPORTATION

ROUTE NO.	SECTION	COUNTY	TOTAL SHEETS	SHEET NO.	SHEET NO. 2 8 SHEETS
I-57		Marion	13	7	
FED. ROAD DIST. NO. 7		ILLINOIS FED. AID PROJECT			

Contract Number: 74097



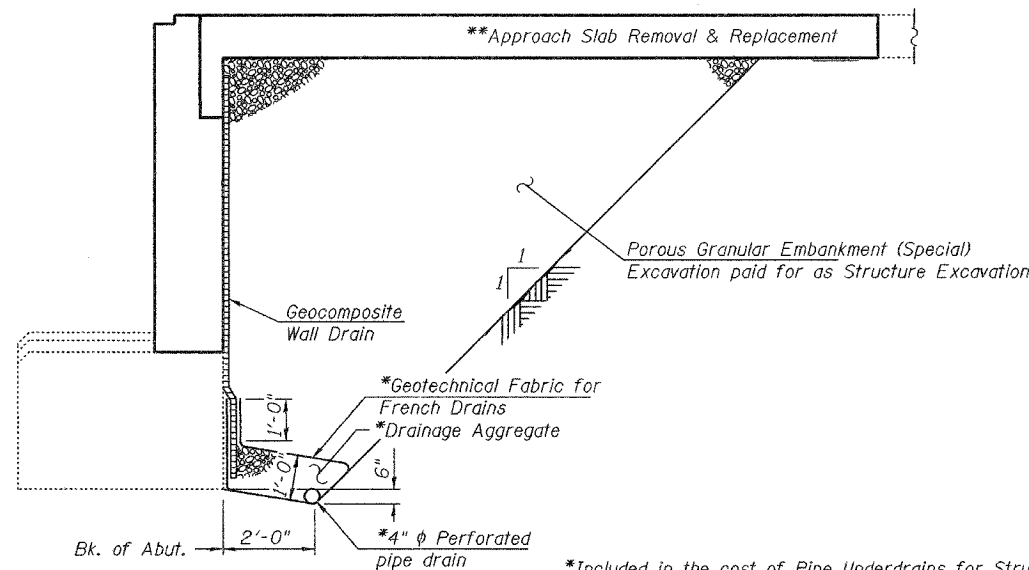
**CONSTRUCTION STAGING**  
(Looking North)



**TEMPORARY SHEET PILING**

Slopes and dimensions shown along sheeting alignment.

Notes:  
Minimum Section Modulus = 3.3 in.<sup>3</sup>/ft.  
If the contractor chooses to alter the temporary cantilevered sheet piling design requirements shown on the plans, a design submittal including plan details and calculations will be required for review and approval by the Engineer.



**SECTION THRU ABUTMENT**  
(Dimensions at Rt. L's)

\*Included in the cost of Pipe Underdrains for Structures.  
\*\*For details see Roadway Plans

All drainage system components shall extend 2'-0" from the end of each wingwall except an outlet pipe shall extend until intersecting with the side slopes. The pipes shall drain into concrete headwalls. (See Article 601.05 of the Standard Specifications and Highway Standard 601101). Bore holes through wingwalls as required and seal gap around pipe. Cost included with Pipe Underdrains for Structures.

DESIGNED	A.T.H.
CHECKED	S.J.B.
DRAWN	Drew Christopher
CHECKED	A.T.H. S.J.B.

February 28, 2006  
EXAMINED *John A. Morris*  
ENGINEER OF STRUCTURAL SERVICES  
PASSED *Ralph E. Anderson*  
ENGINEER OF BRIDGES AND STRUCTURES

**STAGING DETAILS**  
**I-57 OVER MISSOURI &**  
**ILLINOIS RAILROAD**  
**MARION COUNTY**  
**SN 061-0049**