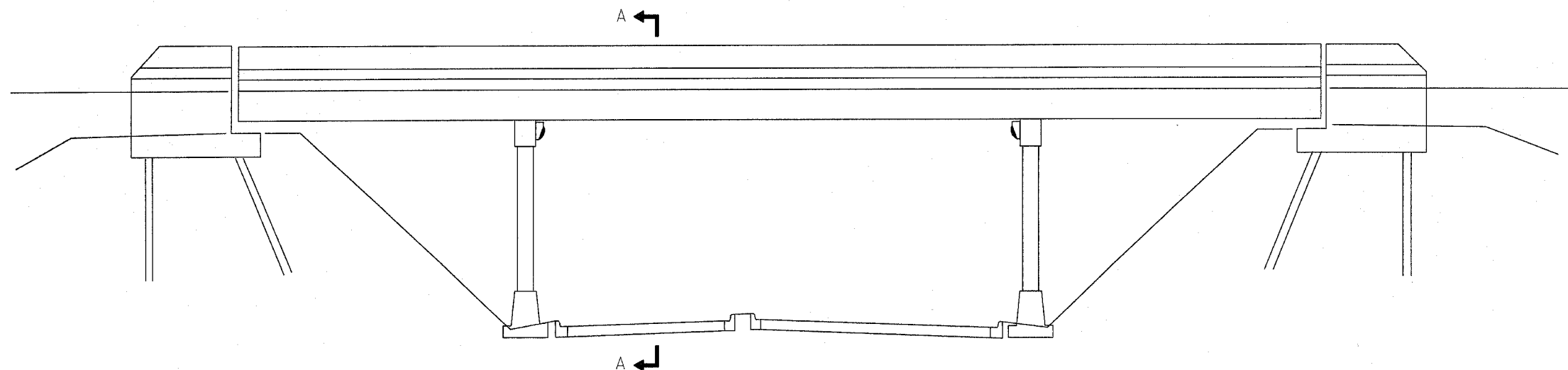
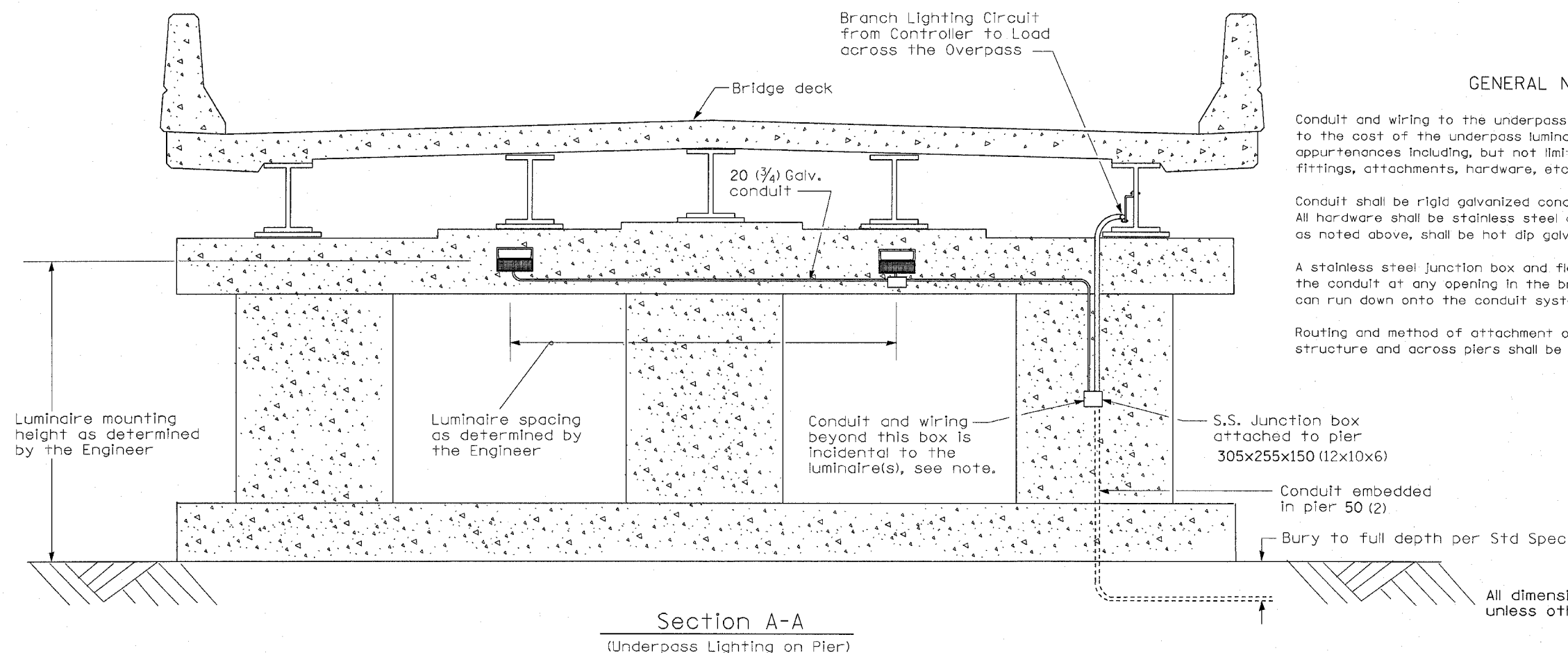


F.A.I. RTE.	SECTION	COUNTY	TOTAL SHEETS	SHEET NO.
80	(32, 47-4)K	KENDALL/GRUNDY	243	153
STA.		TO STA.		
FED. ROAD DIST. NO. _		ILLINOIS		
		FED. AID PROJECT		
CONTRACT NO. 66294				



OVERPASS ELEVATION  
(Not to Scale)



#### GENERAL NOTES

Conduit and wiring to the underpass luminaire(s) shall be incidental to the cost of the underpass luminaire(s). This includes all appurtenances including, but not limited to; straps, clamps, hangers, fittings, attachments, hardware, etc.

Conduit shall be rigid galvanized conduit unless noted otherwise. All hardware shall be stainless steel and all conduit appurtenances, as noted above, shall be hot dip galvanized or stainless steel.

A stainless steel junction box and flex conduit shall be installed in the conduit at any opening in the bridge deck where road salt can run down onto the conduit system.

Routing and method of attachment of the conduit on the bridge structure and across piers shall be as approved by the Engineer.

Section A-A  
(Underpass Lighting on Pier)

DATE	REVISIONS	UNDERPASS LIGHTING
	Corrected 4/3/06	

PLOT DATE = 4/10/2006  
FILE NAME = FILEL  
USER NAME = RUSERT

1 **ADDED SHEET 4-11-06 MJ** LGT019.M32  
PER ADDENDUM