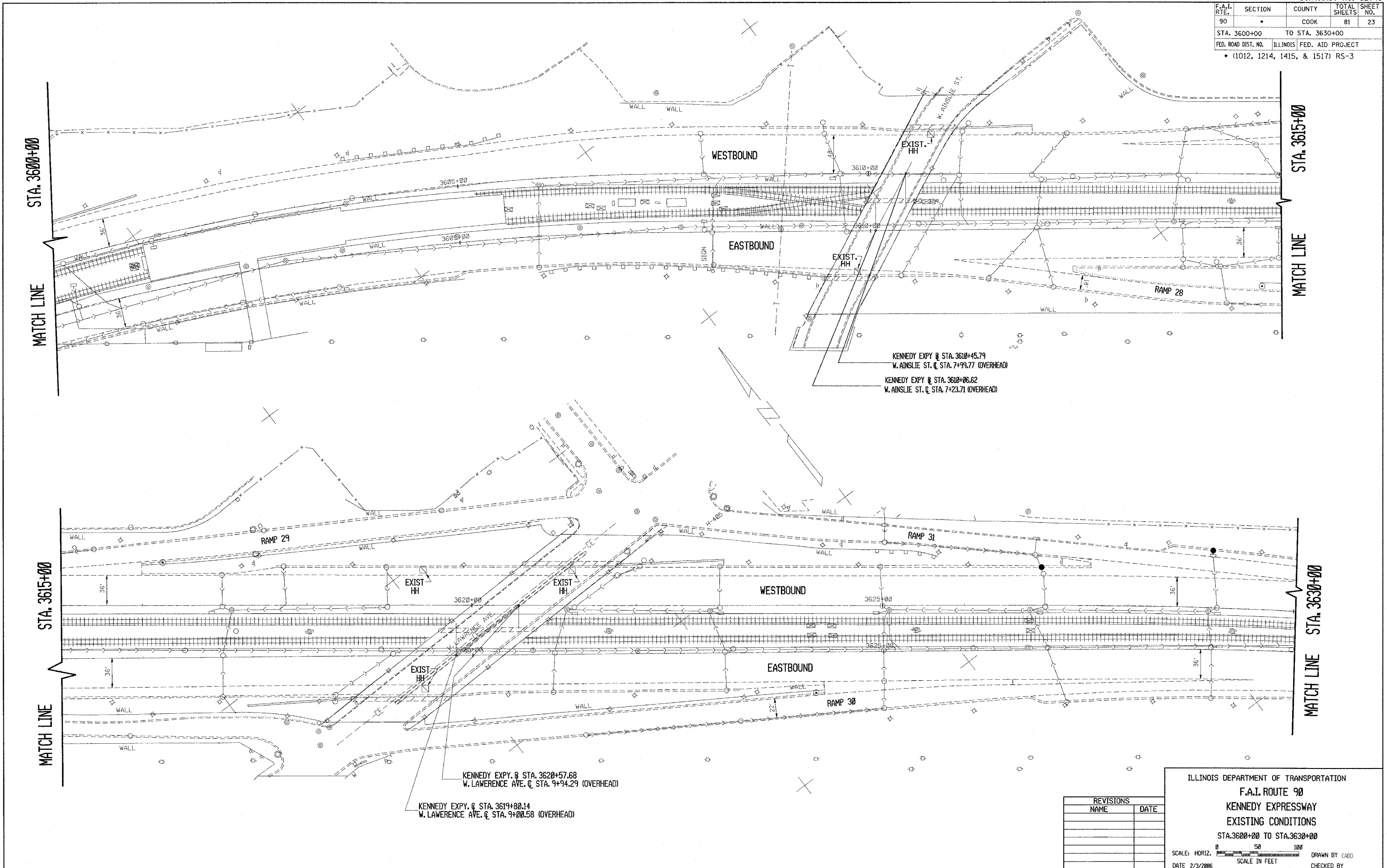


F.A.I. RTE.	SECTION	COUNTY	TOTAL SHEETS	SHEET NO.
90		COOK	81	23
STA. 3600+00		TO STA. 3630+00		
FED. ROAD DIST. NO.		ILLINOIS FED. AID PROJECT		
• (1012, 1214, 1415, & 1517) RS-3				



REVISIONS	
NAME	DATE

ILLINOIS DEPARTMENT OF TRANSPORTATION  
**F.A.I. ROUTE 90**  
**KENNEDY EXPRESSWAY**  
**EXISTING CONDITIONS**  
 STA. 3600+00 TO STA. 3630+00

SCALE: HORIZ. SCALE IN FEET  
 DATE 2/3/2006 DRAWN BY CAD00 CHECKED BY