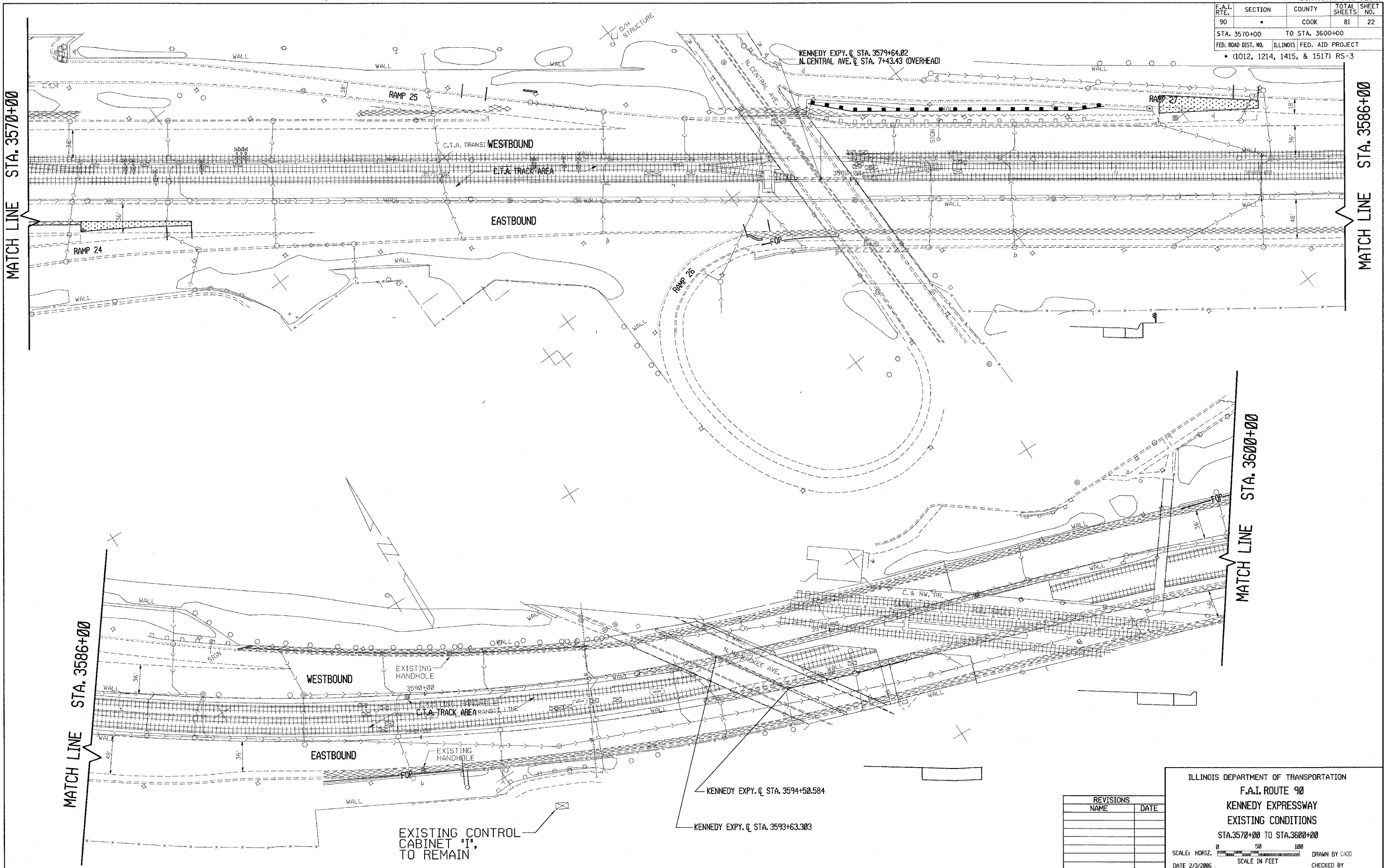


F.A.I. RTE.	SECTION	COUNTY	TOTAL SHEETS	SHEET NO.
90		COOK	81	22
STA. 3570+00		TO STA. 3600+00		
FED. ROAD DIST. NO.		ILLINOIS FED. AID PROJECT		
• (1012, 1214, 1415, & 1517) RS-3				



REVISIONS	
NAME	DATE

ILLINOIS DEPARTMENT OF TRANSPORTATION
 F.A.I. ROUTE 90
 KENNEDY EXPRESSWAY
 EXISTING CONDITIONS
 STA. 3570+00 TO STA. 3600+00
 SCALE: HORIZ. 1" = 50' 120'
 DATE 2/3/2006 SCALE IN FEET DRAWN BY C400 CHECKED BY