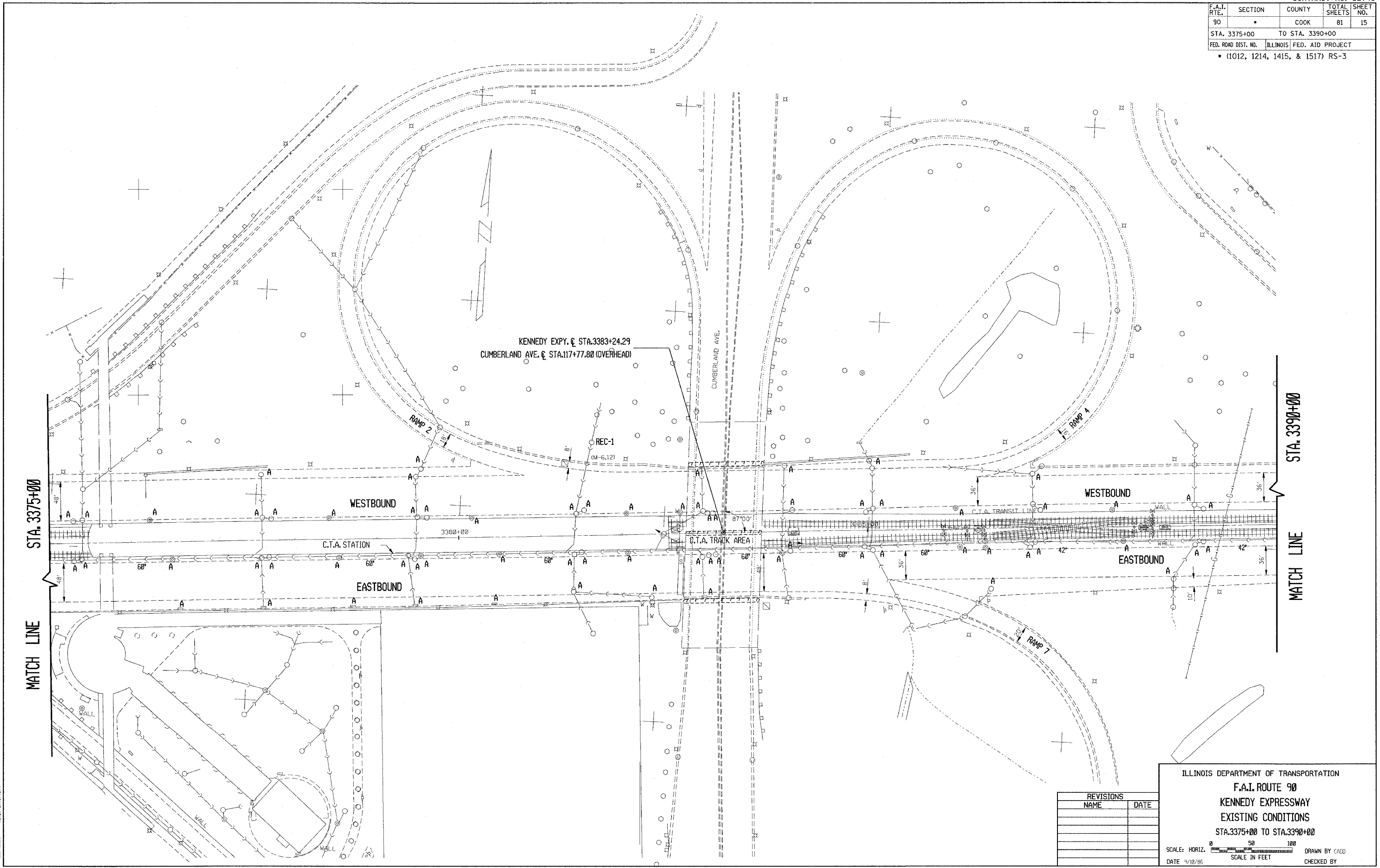


F.A.I. RTE.	SECTION	COUNTY	TOTAL SHEETS	SHEET NO.
90		COOK	81	15
STA. 3375+00		TO STA. 3390+00		
FED. ROAD DIST. NO.		ILLINOIS	FED. AID PROJECT	
• (1012, 1214, 1415, & 1517) RS-3				



STA. 3375+00

STA. 3390+00

MATCH LINE

MATCH LINE

REVISIONS	
NAME	DATE

ILLINOIS DEPARTMENT OF TRANSPORTATION  
**F.A.I. ROUTE 90**  
**KENNEDY EXPRESSWAY**  
**EXISTING CONDITIONS**  
**STA. 3375+00 TO STA. 3390+00**

SCALE: HORIZ. SCALE IN FEET  
 DATE 9/10/86 DRAWN BY CADD CHECKED BY

2/3/2006  
 Z:\PROJECTS\190\190A\190A.DGN  
 LEVELS = 2,4,7,26,35,36