

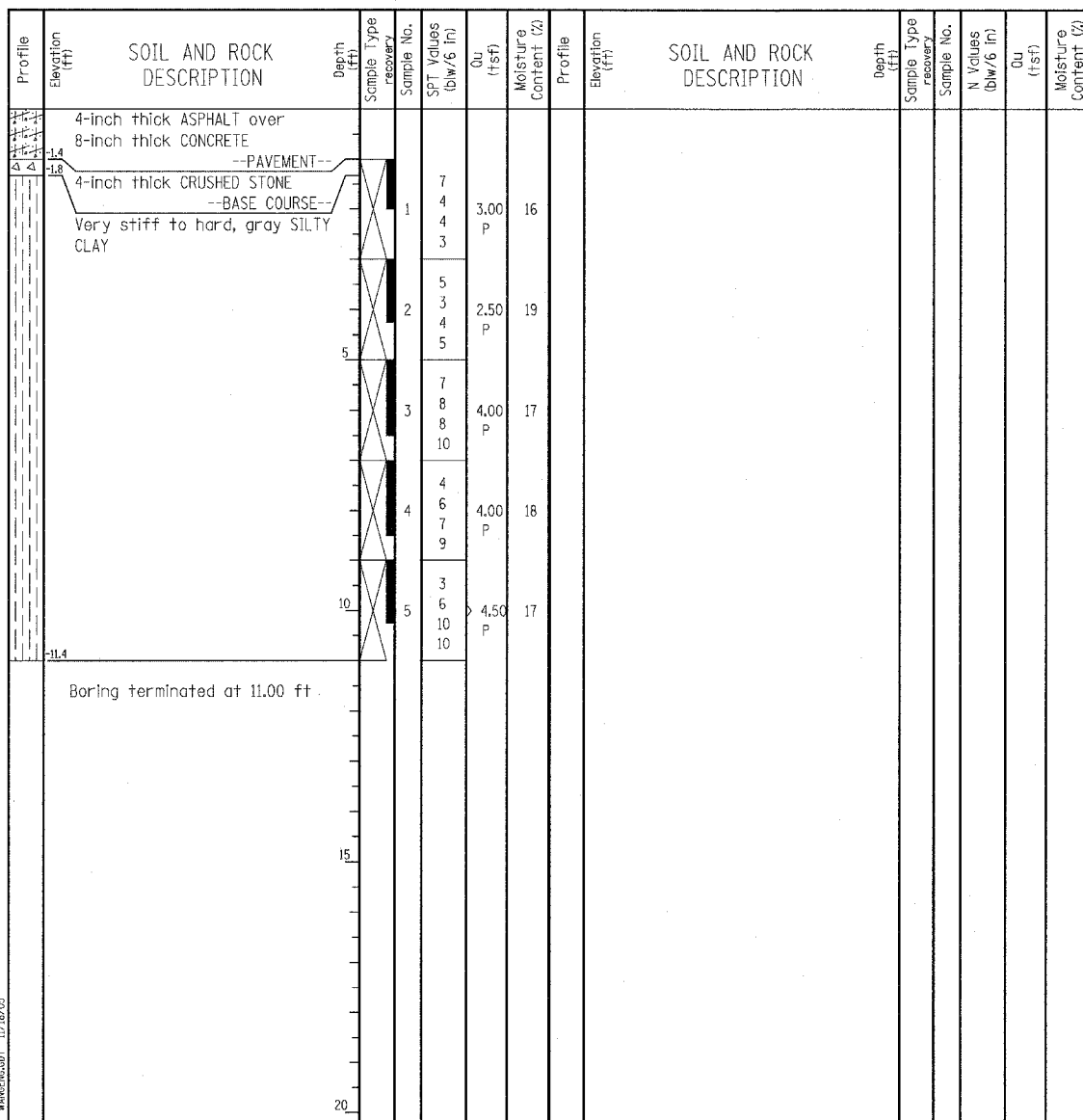
Wang Engineering, Inc.
 Consulting Geotechnical and Environmental Engineers
 wangeng3@wangeng.com
 1145 Main Street
 Lombard, IL 60148
 Telephone: 630 953-9928
 Fax: 630 953-9938

BORING LOG P-063 Page 1 of 1

WEI Job No.: 414-07-01

Datum: CCD
 Elevation: -0.43 ft
 North: 1856274.52 ft
 East: 1177362.97 ft
 Station: 2349+16
 Offset: .5' RT

Client: T. Y. LIN International, Inc.
 Project: Dan Ryan Contracts 62304 (20) and 62593 (23)
 Location: City of Chicago, Cook County, Illinois



GENERAL NOTES				WATER LEVEL DATA			
Begin Drilling	10-09-2003	Complete Drilling	10-09-2003	While Drilling	▽	DRY	
Drilling Contractor	Patrick Drilling	Drill Rig	CME 75 TMR	At Completion of Drilling	▽	DRY	
Driller	K&L	Logger	Y. Shiu	Time After Drilling	NA		
Checked by	MLS	Depth to Water	▽	NA			
Drilling Method	3.25" ID HSA; Boring backfilled with bentonite upon completion			The stratification lines represent the approximate boundary between soil types; the actual transition may be gradual.			

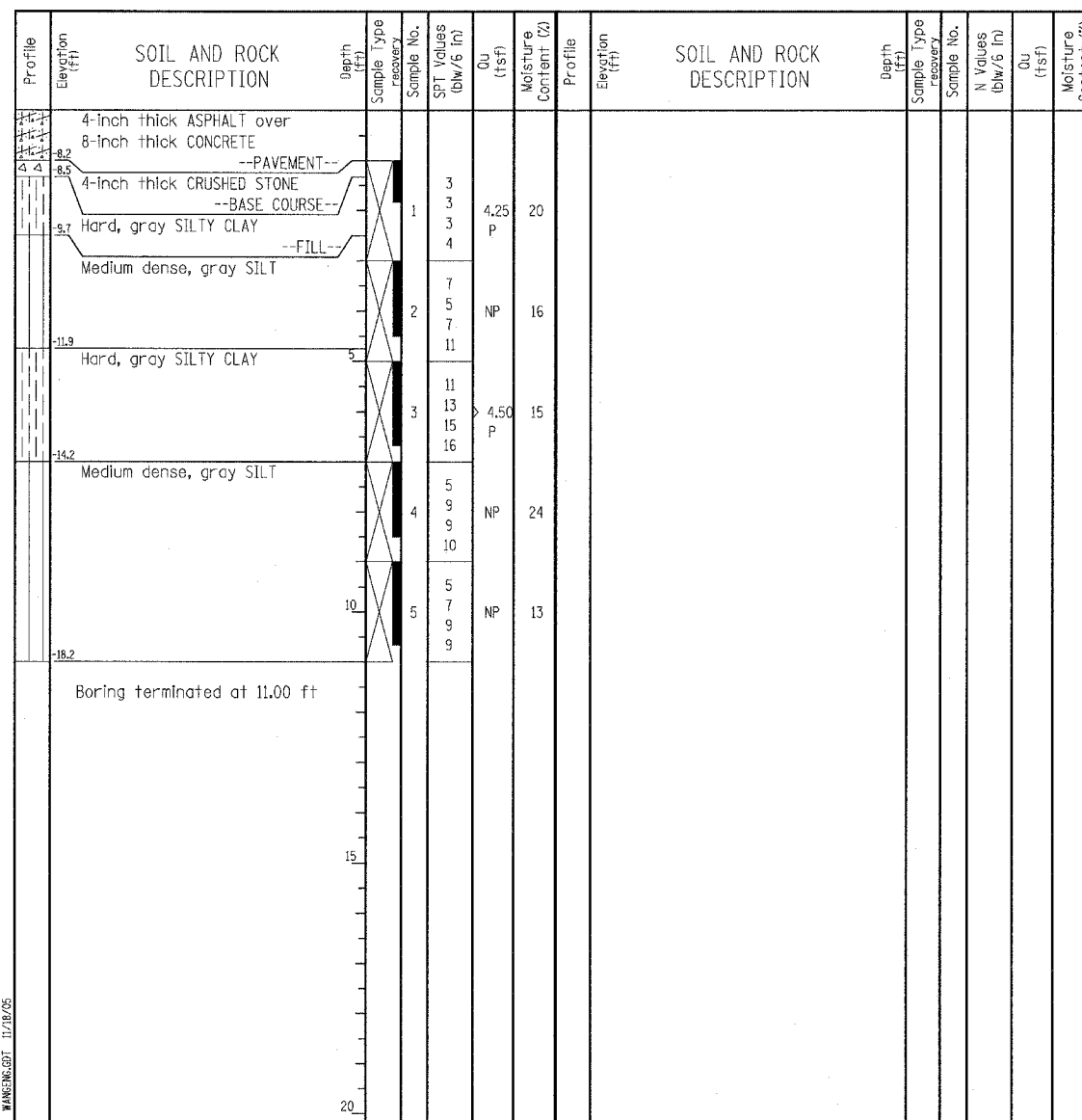
Wang Engineering, Inc.
 Consulting Geotechnical and Environmental Engineers
 wangeng3@wangeng.com
 1145 Main Street
 Lombard, IL 60148
 Telephone: 630 953-9928
 Fax: 630 953-9938

BORING LOG P-064 Page 1 of 1

WEI Job No.: 414-07-01

Datum: CCD
 Elevation: -7.17 ft
 North: 1855403.15 ft
 East: 1177384.63 ft
 Station: 2340+44
 Offset: 2' RT

Client: T. Y. LIN International, Inc.
 Project: Dan Ryan Contracts 62304 (20) and 62593 (23)
 Location: City of Chicago, Cook County, Illinois



GENERAL NOTES				WATER LEVEL DATA			
Begin Drilling	10-09-2003	Complete Drilling	10-09-2003	While Drilling	▽	DRY	
Drilling Contractor	Patrick Drilling	Drill Rig	CME 75 TMR	At Completion of Drilling	▽	DRY	
Driller	K&L	Logger	Y. Shiu	Time After Drilling	NA		
Checked by	MLS	Depth to Water	▽	NA			
Drilling Method	3.25" ID HSA; Boring backfilled with bentonite upon completion			The stratification lines represent the approximate boundary between soil types; the actual transition may be gradual.			

TYLIN INTERNATIONAL

LEGEND

NP	NON-PLASTIC
B	BULGE FAILURE
S	SHEAR FAILURE
P	POCKET PENETROMETER

REVISIONS	
NAME	DATE

ILLINOIS DEPARTMENT OF TRANSPORTATION
 F.A.I. 94 (DAN RYAN EXPRESSWAY)
SOIL BORINGS P-063 & P-064

SCALE: N.T.S. DRAWN BY: RTM
 DATE: MARCH 7, 2006 CHECKED BY: MPG