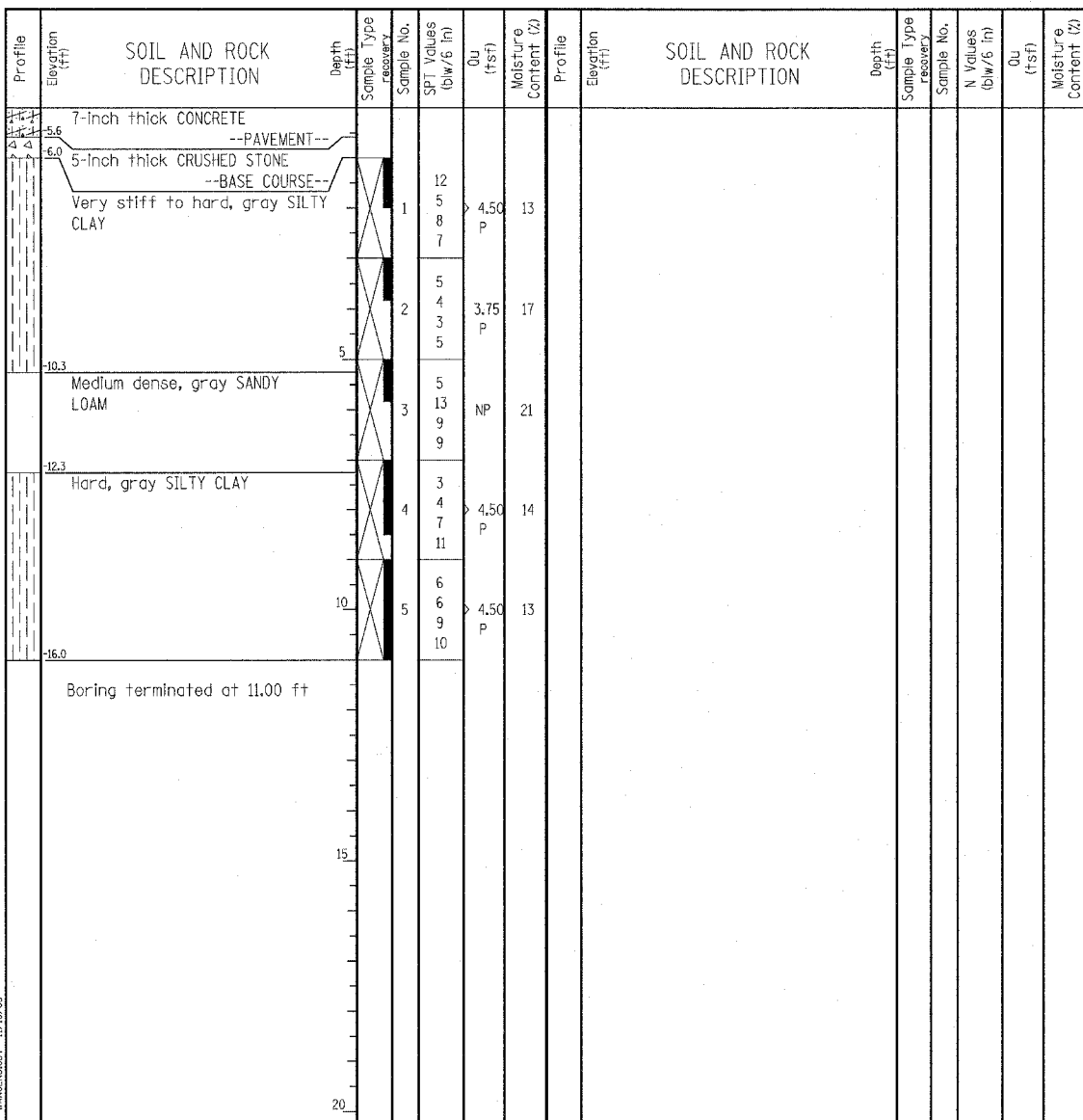


Wang Engineering, Inc.
 Consulting Geotechnical and Environmental Engineers
 wangeng3@wangeng.com
 1145 Main Street
 Lombard, IL 60148
 Telephone: 630 953-9928
 Fax: 630 953-9938

BORING LOG P-047
 WEI Job No.: 414-07-01
 Datum: CCD
 Elevation: -5.02 ft
 North: 1854263.21 ft
 East: 1177481.93 ft
 Station: 2329+00.63
 Offset: 68.80' RT

Client: T. Y. LIN International, Inc.
 Project: Dan Ryan Contracts 62304 (20) and 62593 (23)
 Location: City of Chicago, Cook County, Illinois

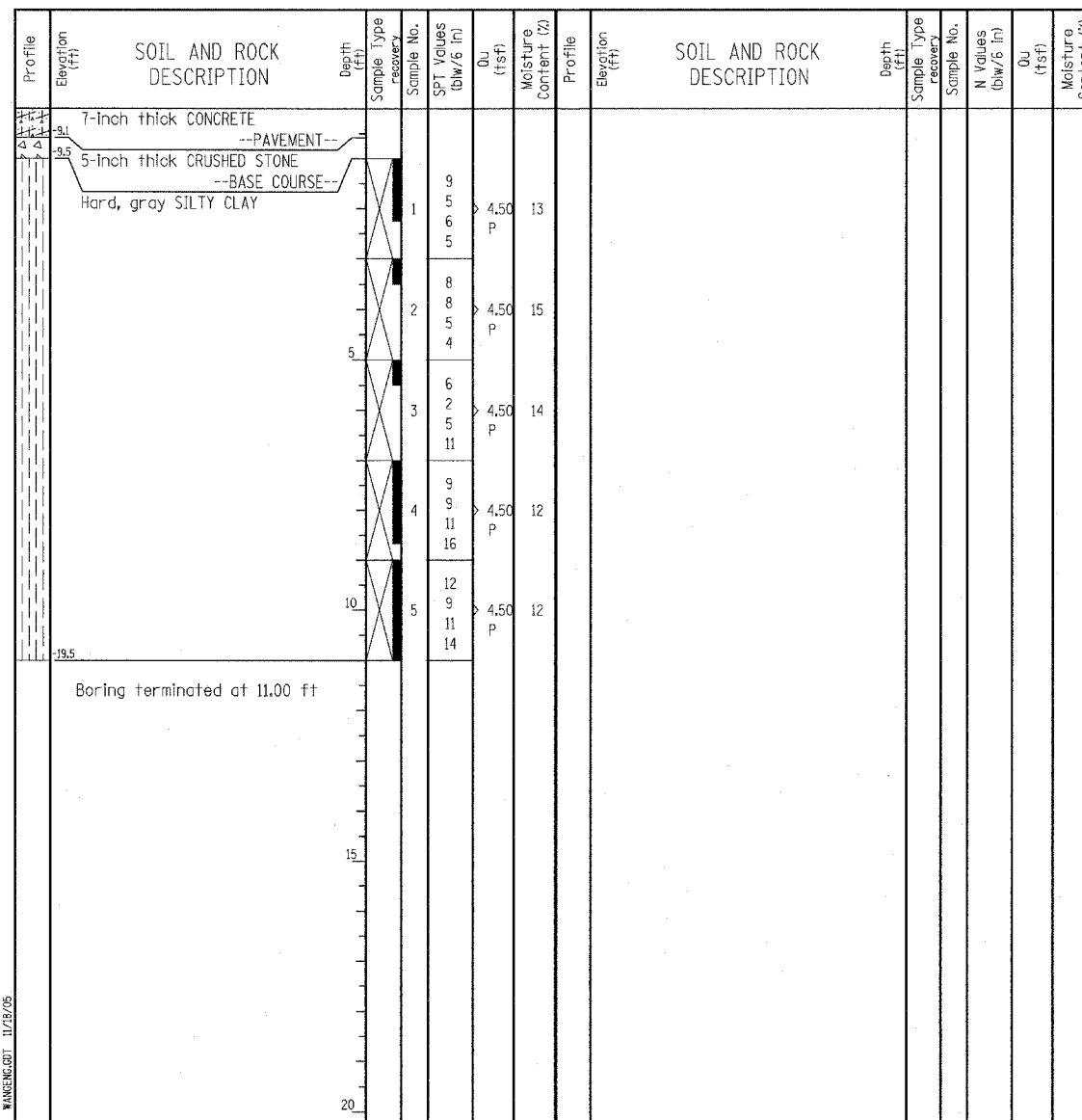


GENERAL NOTES				WATER LEVEL DATA			
Begin Drilling	07-21-2003	Complete Drilling	07-21-2003	While Drilling	∇	DRY	
Drilling Contractor	Patrick Drilling	Drill Rig	CME 75 TMR	At Completion of Drilling	∇	DRY	
Driller	J&B	Logger	Y. Shiu	Time After Drilling	NA		
Drilling Method	3.25" ID. HSA; Boring backfilled with bentonite upon completion			Depth to Water	∇	NA	

Wang Engineering, Inc.
 Consulting Geotechnical and Environmental Engineers
 wangeng3@wangeng.com
 1145 Main Street
 Lombard, IL 60148
 Telephone: 630 953-9928
 Fax: 630 953-9938

BORING LOG P-048
 WEI Job No.: 414-07-01
 Datum: CCD
 Elevation: -8.52 ft
 North: 1854547.21 ft
 East: 1177461.48 ft
 Station: 2331+86.78
 Offset: 58.56' RT

Client: T. Y. LIN International, Inc.
 Project: Dan Ryan Contracts 62304 (20) and 62593 (23)
 Location: City of Chicago, Cook County, Illinois



GENERAL NOTES				WATER LEVEL DATA			
Begin Drilling	07-21-2003	Complete Drilling	07-21-2003	While Drilling	∇	DRY	
Drilling Contractor	Patrick Drilling	Drill Rig	CME 75 TMR	At Completion of Drilling	∇	DRY	
Driller	J&B	Logger	Y. Shiu	Time After Drilling	NA		
Drilling Method	3.25" ID. HSA; Boring backfilled with bentonite upon completion			Depth to Water	∇	NA	

LEGEND

NP NON-PLASTIC
 B BULGE FAILURE
 S SHEAR FAILURE
 P POCKET PENETROMETER

REVISIONS	
NAME	DATE

TYLIN INTERNATIONAL