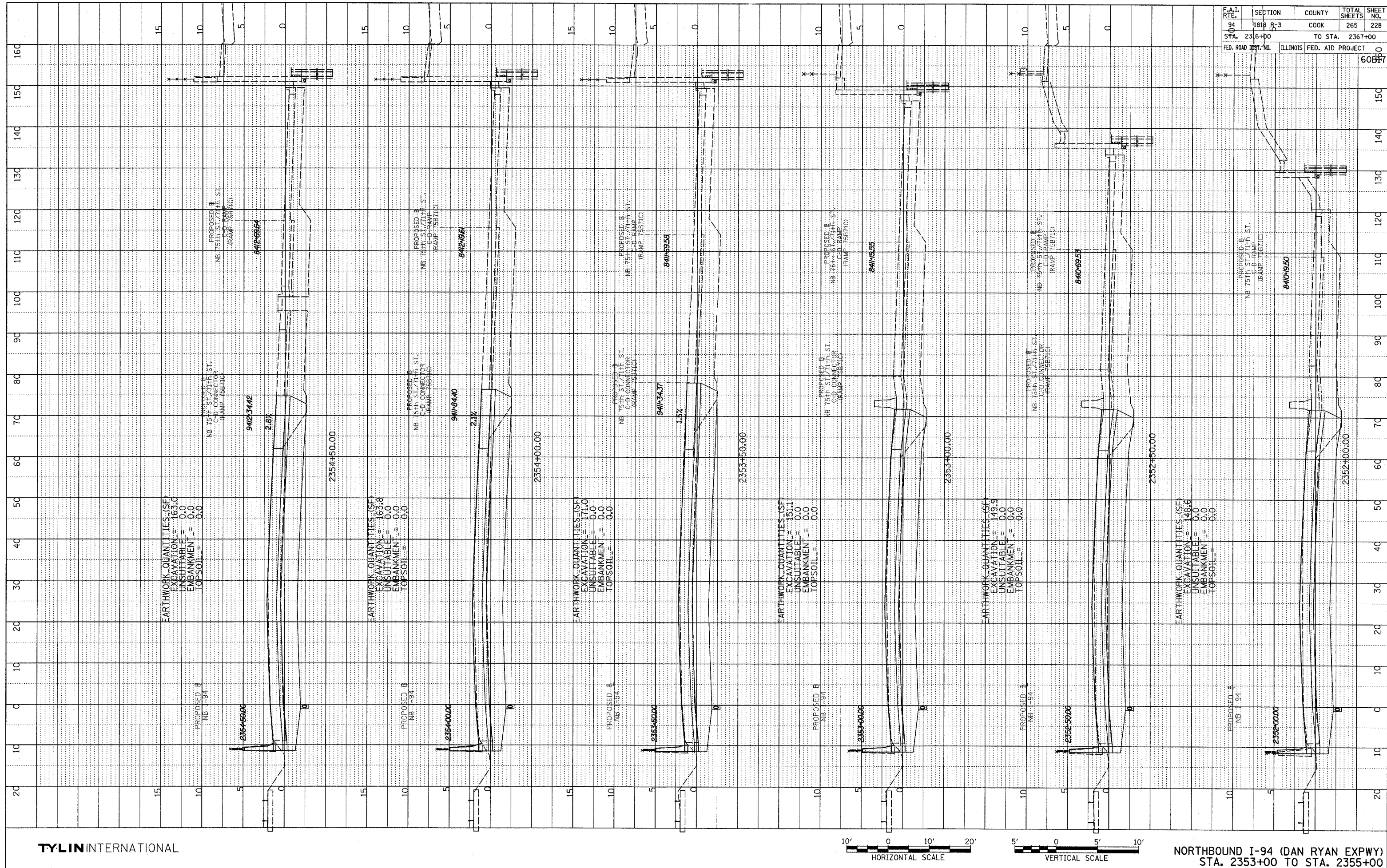
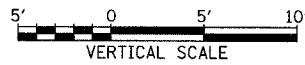


PROFILE SURVEYED \_\_\_\_\_ DATE \_\_\_\_\_  
 GRADES CHECKED \_\_\_\_\_  
 NOTE BOOK NO. \_\_\_\_\_  
 STRUCTURE NOTATIONS CHECKED \_\_\_\_\_



TYLIN INTERNATIONAL



NORTHBOUND I-94 (DAN RYAN EXPWY)  
STA. 2353+00 TO STA. 2355+00

F.A.T. P.C.T.	SECTION	COUNTY	TOTAL SHEETS	SHEET NO.
94	181B B-3	COOK	265	228
STA. 236+00		TO STA. 2367+00		
FED. ROAD DIST. NO.		ILLINOIS FED. AID PROJECT		60B87