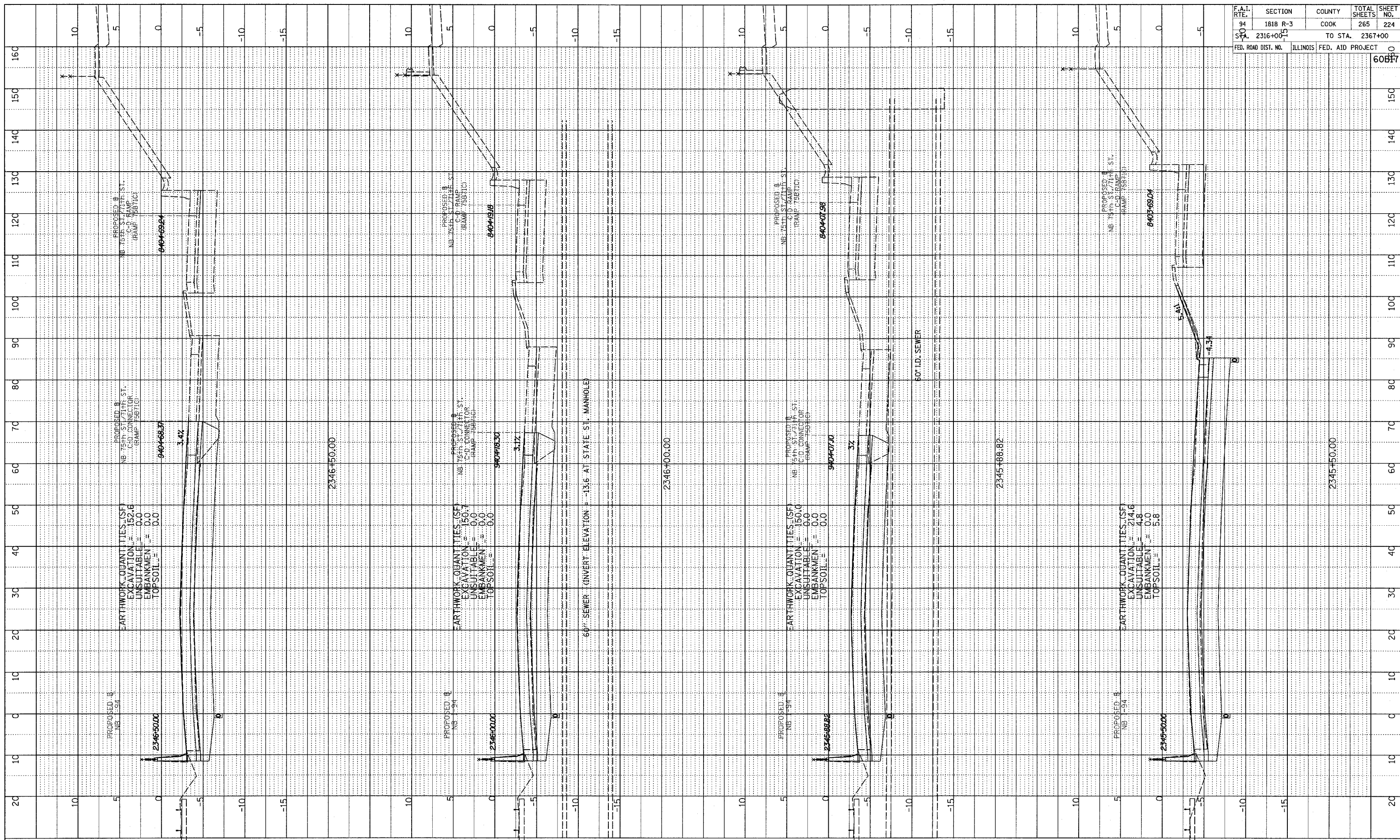
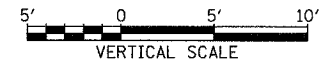
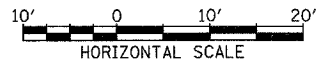


PROFILE
 NO. _____
 DATE _____
 BY _____
 REVISIONS
 PLOTTED _____
 GRADES CHECKED _____
 STRUCTURE NOTATIONS ERROR _____



F.A.I. RTE.	SECTION	COUNTY	TOTAL SHEETS	SHEET NO.
94	1818 R-3	COOK	265	224
STA. 2316+00.00	TO STA. 2367+00			
FED. ROAD DIST. NO.	ILLINOIS FED. AID PROJECT		60817	

TYLIN INTERNATIONAL



NORTHBOUND I-94 (DAN RYAN EXPWY)
 STA. 2345+88.82 TO STA. 2346+60

03/03/2006 03:41:17 PM