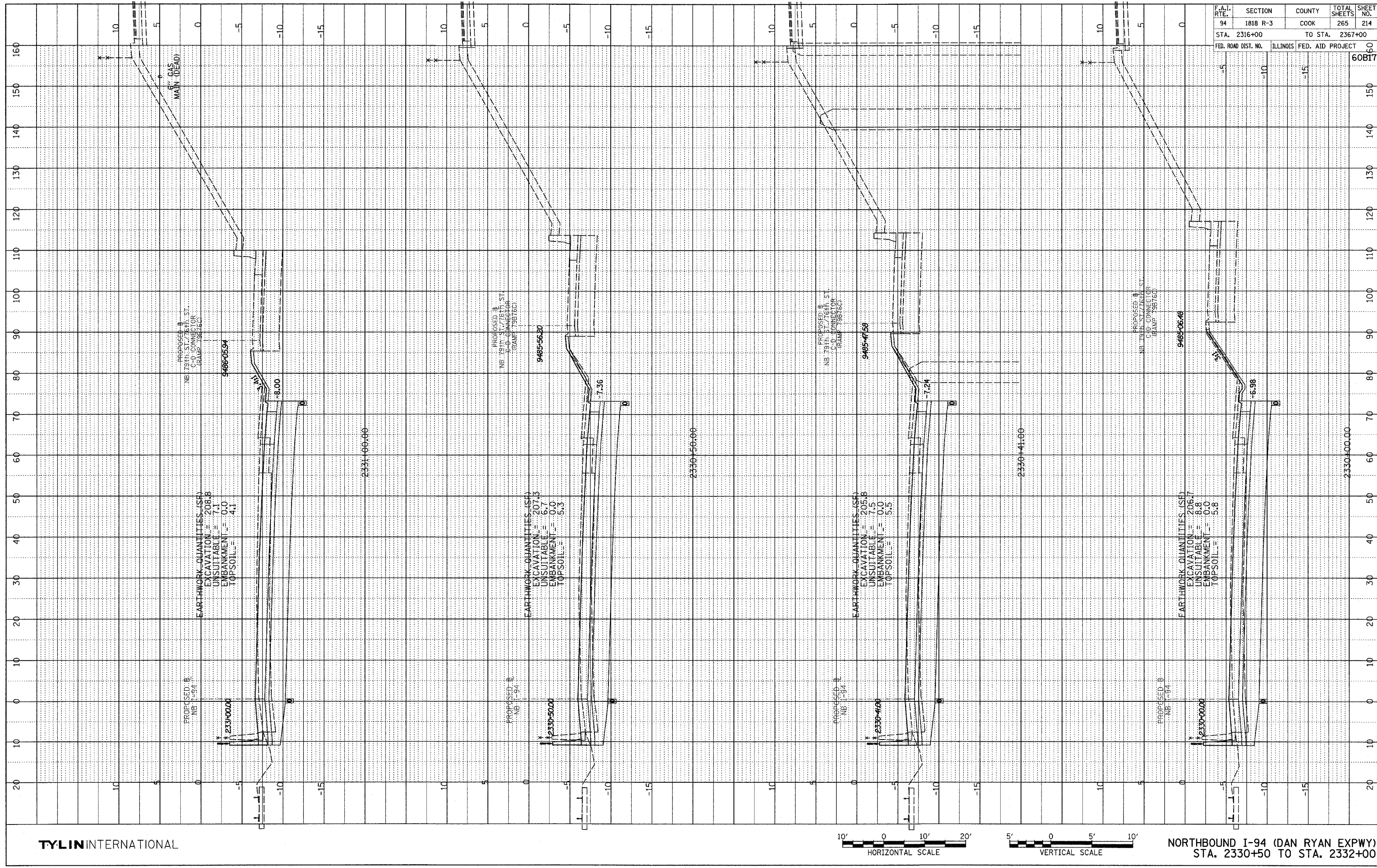


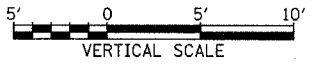
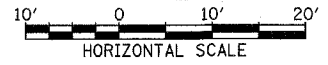
DATE	BY

PROFILE SURVEYED	
GRADES CHECKED	
PLAN CHECKED	
STRUCTURE NOTATIONS CHECKED	
NOTE BOOK NO.	



F.A.I. RTE.	SECTION	COUNTY	TOTAL SHEETS	SHEET NO.
94	1818 R-3	COOK	265	214
STA. 2316+00	TO STA. 2367+00			
FED. ROAD DIST. NO.	ILLINOIS	FED. AID PROJECT	60B17	

TYLIN INTERNATIONAL



NORTHBOUND I-94 (DAN RYAN EXPWY)
STA. 2330+50 TO STA. 2332+00

03/03/2006 04:09:23 PM P:\0237\3\road\2330\2330.dwg (User: jayr) 9/15/06